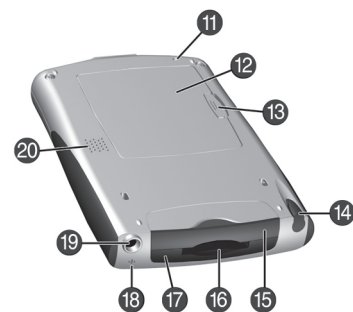
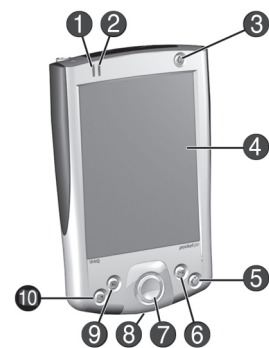
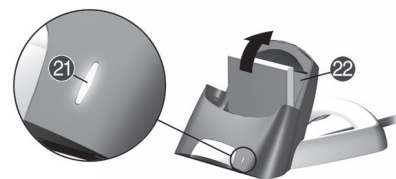


## getting acquainted



1. **Active Bluetooth Indicator:** Flashes "blue" when Bluetooth radio is on
2. **LED Power Indicator:**  
amber flash = charging  
amber solid = charged  
green flash = alarm
3. **Power:** Press to power on/off
4. **Color Display:** High contrast color screen
5. **iTASK\*:** Open, close, and switch between applications, run utilities and change settings
6. **Inbox\*:** Access your inbox to send and receive e-mail
7. **Navigation:** 5-way navigation button:  
Up/Down/Left/Right/Select
8. **Charging/Communication Port:** Connects to synchronization cable, synchronization cradle, and AC charger adapter
9. **Contacts\*:** Display your contacts list
10. **Calendar\*:** Schedule appointments
11. **Reset Button:** Insert the stylus to reset the unit
12. **Battery Door:** Houses the removable, rechargeable battery
13. **Battery Door Latch:** Latches the battery door
14. **Stylus:** Slide up to remove, slide down to store
15. **CompactFlash (CF) Expansion Slot:** Supports CF Type II or Type I cards
16. **Secure Digital I/O (SDIO) MMC:** Supports SD Memory, SD I/O or MMC Memory expansion cards
17. **Infrared/Universal Remote Port:** Beams information between other mobile devices. This port also functions as a Universal Remote Control for most consumer electronics
18. **Microphone:** Records notes or other sounds
19. **Audio Jack:** Connects headphone
20. **Speaker:** Alarms, voice, music



### USB Synchronization Cradle

21. LED Power Indicator:  
amber flashing = charging  
amber solid = charged
22. Spare battery charging compartment

\*These buttons are programmable but at start-up they are assigned by default.

## troubleshooting and support information

| for information on...  | see this source...   |
|--|--|
| Using your Pocket PC   | <i>HP iPAQ h2200 Series User's Guide</i> on the CD   |
| Connecting to and synchronizing with a computer.   | ActiveSync Help on your computer<br>To view <b>Help</b> , start ActiveSync, click <b>Help&gt;Microsoft ActiveSync Help</b> .   |
| Troubleshooting on ActiveSync connections  | ActiveSync troubleshooter on your computer. Click <b>Help&gt;Troubleshooter</b> .  |
| Programs that are on your Pocket PC  | <i>HP iPAQ h2200 Series User's Guide</i> on the CD and Help located on Pocket PC. Tap <b>Start</b> , then <b>Help</b> .  |
| Additional programs that can be installed on your Pocket PC  | <i>HP iPAQ h2200 Series Companion CD</i> or <a href="http://www.microsoft.com/mobile/pocketpc/downloads">http://www.microsoft.com/mobile/pocketpc/downloads</a>        |
| Updates on Windows-powered devices   | <a href="http://www.microsoft.com/pocketpc">http://www.microsoft.com/pocketpc</a>  |
| Safety precautions   | Important Safety Information document on the CD.   |
| Worldwide Limited Warranty   | <i>Worldwide Limited Warranty and Technical Support</i> document in the box  |
| Accessory products   | Accessories information brochure included with your Pocket PC or <a href="http://www.hp.com/products/pocketpc/options">http://www.hp.com/products/pocketpc/options</a> |
| Support for your Pocket PC   | <a href="http://www.hp.com/support/pocketpc">http://www.hp.com/support/pocketpc</a>  |
| Worldwide telephone support phone numbers  | <a href="http://www.hp.com/country/us/eng/wwcontact.html">http://www.hp.com/country/us/eng/wwcontact.html</a>  |
| Registering your Pocket PC in order to receive email from HP regarding special offers and promotions | <a href="http://www.register.hp.com">http://www.register.hp.com</a>  |

**Note:** This is a Class B digital device, pursuant to Part 15 of the FCC Rules. Refer to the documentation CD for Class B information.

© 2003 Hewlett-Packard Company. © 2003 Hewlett-Packard Development Company, L.P.  
HP, Hewlett-Packard, and the Hewlett-Packard logo are trademarks of the Hewlett-Packard Company in the U.S. and other countries.  
iPAQ is a trademark of the Hewlett-Packard Development Company, L.P. in the U.S. and other countries.  
Microsoft, Windows, the Windows logo, Outlook and ActiveSync are trademarks of Microsoft Corporation in the U.S. and other countries.  
hp iPAQ Pocket PC is Powered by Microsoft® Windows®. First Edition, May 2003.



293145-001

## getting started

### hp iPAQ Pocket PC h2200 series



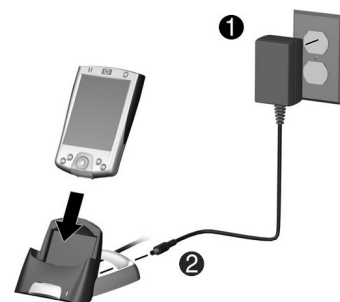
# 1 Install the battery:



# 2 Charge the unit:

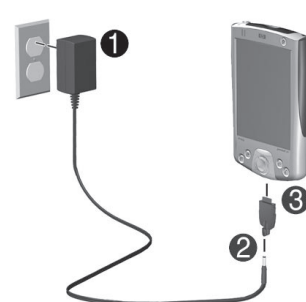
**Note:** Unit must be fully charged before synchronizing with your computer, it takes about 4 hours to fully charge the unit.

## USB synchronization cradle



OR

## AC adapter

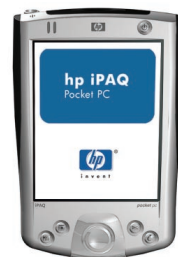


# 3 Remove Pocket PC from cradle:

**Important:** Do not insert Pocket PC back into cradle until ActiveSync requests it. ActiveSync must be installed before establishing a partnership with your PC.

# 4 Set up:

With unit on, follow the steps on the **Welcome** screen.



# 5 Insert the Companion CD:

Insert the *HP iPAQ Pocket PC Companion CD* into your personal computer and click **Start Here**.

# 6 Install Microsoft Outlook:

Install Microsoft Outlook from your Companion CD onto your personal computer, if necessary.

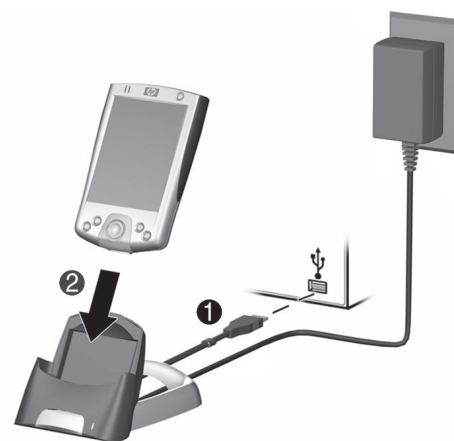
**Note:** Install Outlook if you plan to synchronize e-mail, contacts, calendar or tasks on your personal computer with your Pocket PC

# 7 Install ActiveSync 3.7 (or greater):

Click to install the latest version of ActiveSync from your Companion CD and follow the instructions.

# 8 Connect Pocket PC to personal computer:

Connect USB connector to appropriate port on your personal computer and reinsert Pocket PC into the cradle.

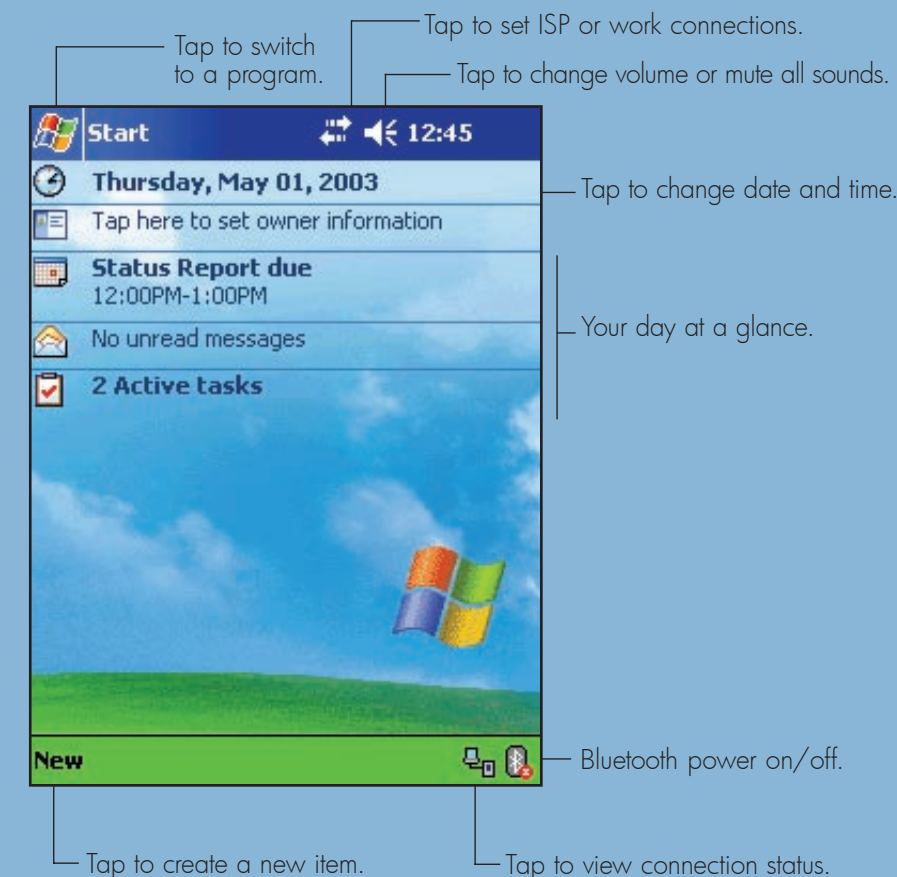


# 9 Establish a partnership:

Follow the on-screen ActiveSync instructions to establish a connection between your Pocket PC and your personal computer.

# Today Screen

When you turn on your HP iPAQ Pocket PC for the first time each day (or after 4 hours of inactivity), you see the Today screen. You can also display it by tapping and then **Today**. On the Today screen, you can see at a glance important information for the day.



**Note:** See the User's Guide on the iPAQ Pocket PC Companion CD for information on using Bluetooth Wireless Technology.