

# iPad1/2 Bluetooth<sup>®</sup> Keyboard User Guide

- Congratulations on your purchase of the wireless bluetooth keyboard, please read this instruction book first



content in this guide is subject to change without prior notice

## ➤ Packing contents:

- Wireless Bluetooth Keyboard
- PU Leather Case
- USB Power Charging Cable
- User Guide

## ➤ Product Features:

- Built-in Wireless Bluetooth 3.0 Silicone keyboard
- Stylish protective PU leather Case designed for iPad 1 / 2 display stand for easy viewing

- Rechargeable lithium battery lasts for approximately **30 days** per charge.
- Special home screen key for one-touch access to variety of applications.
- Light weight, quiet keystrokes, dust proof **and** spill-proof
- Energy saving keyboard sleep mode

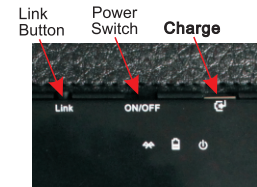
## Bluetooth Keyboard Specification and Pairing Instruction

### ➤ Keyboard Specification

- Bluetooth V3.0 interface Standard
- Operating Distance : 10meters
- Modulation System: GFSK 2.4G
- Transmitting Power : Class 2
- Operating Voltage: 3.0-5.0
- Working Current : <5.0mA
- Standby Current :2.5mA
- Sleeping Current :<200μA
- Charging Current :>100mA
- Standby time : **30 days**
- Uninterrupted working time: **100 hours**
- Lithium Battery Life :3 years
- Lithium Battery Specifications : **48X22X3.0mm**
- Charging time : **3.5-4 hours**
- Lithium Battery Capacity : **300mA**
- Key Dynamics : 80±10g
- Key Life : 2 million strokes
- Operating Temperature :-10℃ — +55℃

### ➤ Bluetooth Keyboard Pairing

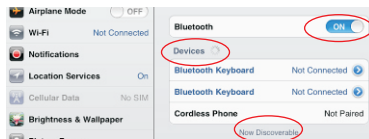
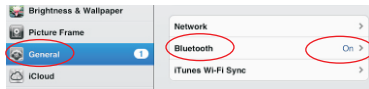
- ♦ Step1: Turn on the power switch .the Power and Bluetooth indicator light will be on for 5 seconds , then the lights will go off.
- ♦ Step2: Press on the "Link" button , The Bluetooth indicator light will be blinking ,and the power indicator will be on.The Keyboard is now ready to be connected to **iPad 1 and the 2 generation**



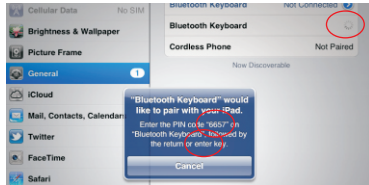
- ♦ Step3: Turn on and unlock **iPad**. In home screen, open **Settings** menu, touch "**Settings**" icon



- **Step 4:** In the General tab, select Bluetooth. If the Bluetooth off by default, slide open switch. iPad then began to search for Bluetooth devices within the established framework. Bluetooth Wireless Device; later appears below Keyboard.

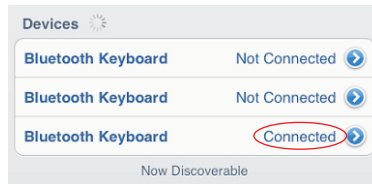


- **Step 5:** The implementation of Tap Bluetooth Wireless Keyboard connection. Arabic on-screen prompts for the code, click on the Enter key to connection.



Here the Arabic numerals (eg:8657), is to connect a Bluetooth keyboard to enter the password. Enter the connection and click the Enter key to success!

- **Step6:** Wireless Bluetooth Keyboard connected successfully ,the connection indicator light will be off ,But the power indicator light will stay on until the keyboard is switched off



**Keyboard connected successfully**

#### ➤ Special Note:

The wireless keyboard can be connected to iPad, iPhone4G, and iPod Touch that had installed iOS 4.0 or later, Galaxy Tab 10.1" and series, Nokia HTC smartphone etc.. For other Bluetooth enabled device, please verify the Bluetooth standard&compatibility before attempting to connect to the keyboard

#### ➤ Charging

When the battery power is low ,the "power" indicator light will start blinking .it is time to recharge the keyboard.

- Step1: Connect the USB power cable to the keyboard charging interface
- Step2: Connect the charging cable A port into USB power or USB Power Adapter.
- The "charge"red indicator light will stay on , when the keyboard is charging. Once it finished charging,the "charge"indicator light will turn off.

#### ➤ Energy Saving Sleep mode

The keyboard will kick into Sleep mode when it is inactive for 15 minutes,and the keyboard power indicator light will go off, To activate from sleep mode ,just press any key and wait 3 seconds ,the keyboard will come back on.

#### ➤ Safety Caution

- Keep the item away sharp objects.
- Do not place heavy object on top of the keyboard.
- Do not Microwave the item.
- Do not force or distorted the keyboard.
- Keep away from oil, chemical or any other organic liquid.

#### ➤ Cleaning

Clean the silicon keyboard with water ,alcohol, or alcohol based disinfectant.

#### ➤ Troubleshooting

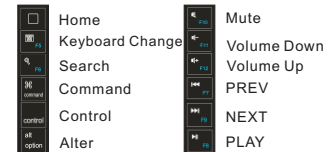
Unable to connect

- Make Sure the power switch is on.
- Make Sure the keyboard is within the operating distance.
- Make sure the battery is charged.
- Make sure iPad 1 / 2 Bluetooth is activate.
- Make sure the Wireless Keyboard is connected to iPad 1 / 2.
- Make sure the wireless keyboard has been paired with to iPad 1 / 2.

Unable to Charge keyboard

- Make Sure the USB power cable is connected properly to the keyboard and the power source.

#### ➤ Special keys on the iPad 1 / 2



Use the "command" + "space" to switch between various languages.

Federal Communication Commission Interference Statement

This equipment has been tested and found to comply with the limits for a Class B digital device.

Pursuant to Part 15 of the FCC Rules, these limits are designed to provide reasonable protection against harmful interference in a residential installation. This equipment generates emissions and can radiate radio frequency energy and, if not installed and used in accordance with the instructions, may cause harmful interference to radio or television reception, which can be determined by turning the equipment off and on.

This device complies with Part 15 of the FCC Rules. Operation is subject to the following two conditions: (1) this device may not cause harmful interference, and (2) this device must accept any interference received, including interference that may cause undesired operation.

FCC Caution: Any change or modifications not expressly approved by the party responsible for compliance could void the user's authority to operate this equipment.

#### IMPORTANT NOTE

FCC Radiation Exposure Statement:

1. This equipment complies with FCC radiation exposure limits set forth for an uncontrolled environment. End users must follow the specific operating instructions for satisfying RF exposure compliance.
2. This transmitter must not be co-located or operating in conjunction with any other antenna or transmitter.