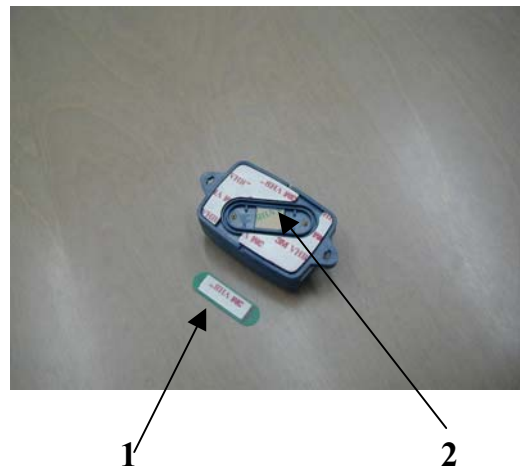


DataTag – Application On Object User Instructions.

The DataTag is delivered with a set of double-sided tapes that are used for placing the DataTag on the tagged object.

The Sensor Plate (item #1) is supplied separately from the DataTag.

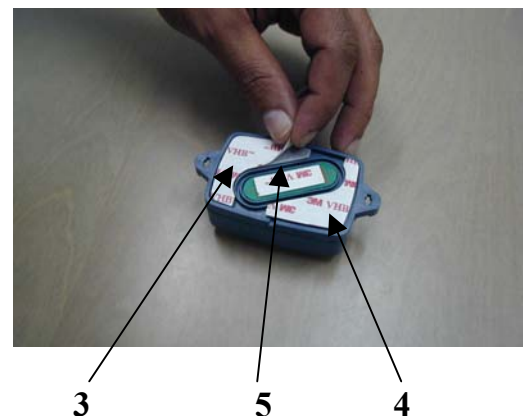
To place the Sensor Plate peel the paper from the double-sided tape (item #2) and place the Sensor Plate in its place.



Press the sensor Tape to create the contact between the tape and the sensor Plate. Make sure the contacts at the bottom part of the plate are aligned with the pins.



Peel the paper from the three pieces of double-sided tape: The two larger pieces (Items #3 & #4) are used for holding the DataTag to the tagged object while the smaller piece in the middle (Item #5) is used for pulling the Sensor Plate off the DataTag in order to create the TAMPER event when the DataTag is removed from the tagged object.



Placing the DataTag on the vehicle

Note: The Installation instructions refer to the case when the DataReader is installed VERTICALLY.

There are two preferred orientations for placing the DataTag on the vehicle:

Horizontal Orientation:

Place the tag on a flat surface that is completely horizontal and press firmly to create good contact between the DataTag and the tagged object.



Vertical Orientation

Place the DataTag on a flat surface that is completely vertical and press firmly to create good contact between the DataTag and the Tagged object.

It is recommended that the height of the DataTag above ground will be above 3' and the optimal height is 5' above ground.





FCC ID: OB6-IGDT40916

This device complies with Part 15 of FCC rules. Operation is subject to the following two conditions: (1) This device may not cause harmful interference, and (2) This device must accept any interference that may cause undesired operation.

NOTE: This equipment has been tested and found to comply with the limits for a Class B digital device, pursuant to part 15 of the FCC Rules. These limits are designed to provide reasonable protection against harmful interference in a residential installation. This equipment generates, uses and can radiate radio frequency energy and, if not installed and used in accordance with the instructions, may cause harmful interference to radio communications. However, there is no guarantee that interference will not occur in a particular installation. If this equipment does cause harmful interference to radio or television reception, which can be determined by turning the equipment off and on, the user is encouraged to try to correct the interference by one or more of the following measures:

- Reorient or relocate the receiving antenna.
- Increase the separation between the equipment and receiver.
- Connect the equipment into an outlet on a circuit different from that to which the receiver is connected.
- Consult the dealer or an experienced radio/TV technician for help.

Changes or modifications to this equipment not expressly approved by Hi-G-Tek Ltd. could void the user's authority to operate the equipment.