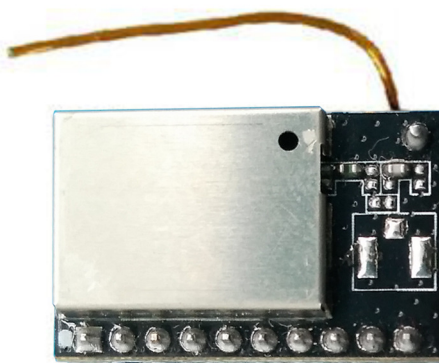


HF-LPT130A

Low Power WiFi Module User Manual

V 1.3



Overview of Characteristic

- ◇ Support IEEE802.11b/g/n Wireless Standards
- ◇ Based on Cortex-M4 SOC, 160MHz CPU, 352KB RAM for 1MB Flash Version, 448KB RAM for 4MB Flash Version
- ◇ Support UART Data Communication Interface
- ◇ Support Work As STA/AP/AP+STA Mode
- ◇ Support Smart Link Function (APP program provide)
- ◇ Support WeChat Airkiss 2.0
- ◇ Support Wireless and Remote Firmware Upgrade Function
- ◇ Support Antenna
 - HF-LPT130A: monopole antenna
- ◇ Single +3.3V Power Supply
- ◇ Small Size:
 - HF-LPT130A: 22mm x 14.3mm x 8mm, DIP10 package
- ◇ FCC/CE/SRRC/RoHS Certificated

TABLE OF CONTENTS

LIST OF FIGURES	4
LIST OF TABLES	5
HISTORY	6
1. PRODUCT OVERVIEW	7
1.1. General Description	7
1.1.1 Key Application	7
1.1.2 Device Parameters	8
1.2. Hardware Introduction	9
1.2.1. HF-LPT130A Pins Definition.....	9
1.2.2. Electrical Characteristics	10
1.2.3. HF-LPT130A Mechanical Size.....	11
1.2.4. HF-LPT130A On-board Chip Antenna.....	11
1.2.5. External Antenna	12
1.2.6. Evaluation Kit.....	12
1.2.7. Hardware Typical Application	14
2. FUNCTIONAL DESCRIPTION	16
2.1. Wireless Networking	16
2.1.1. Basic Wireless Network Based On AP	16
2.1.2. Wireless Network Based On STA.....	16
2.2. Work Mode : Transparent Transmission Mode	17
2.3. Encryption	17
2.4. Parameters Configuration	17
2.5. Firmware Update	18
2.6. SOCKET B Function	18
2.7. Multi-TCP Link Connection	18
3. OPERATION GUIDELINE	20
3.1. Configuration	20
3.1.1. Open Web Management Interface	20
3.1.2. System Page.....	21
3.1.3. Work Mode Page	22
3.1.4. STA Setting Page	22
3.1.5. AP Setting Page	24
3.1.6. Other Setting Page	24
3.1.7. Account Management Page	25
3.1.8. Upgrade Software Page	25
3.1.9. Restart Page	25
3.1.10. Restore Page	26
3.1.11. Internal Webpage.....	26

- 3.2. Usage Introduction27**
 - 3.2.1. Software Debug Tools27
 - 3.2.2. Network Connection27
 - 3.2.3. Default Parameter Setting27
 - 3.2.4. Module Debug.....28
- 3.3. Typical Application Examples29**
 - 3.3.1. Wireless Control Application.....29
 - 3.3.2. Remote Management Application.....30
 - 3.3.3. Transparent Serial Port Application.....30

LIST OF FIGURES

Figure 1.	HF-LPT130A Pins Map	9
Figure 2.	HF-LPT130A Mechanical Dimension	11
Figure 3.	HF-LPT130A suggested Module Placement Region	12
Figure 4.	HF-LPT230 EVK.....	13
Figure 5.	HF-LPT130A EVK	13
Figure 6.	HF-LPT130A Order InformationTypical Application	14
Figure 7.	HF-LPT130A Hardware Typical Application.....	15
Figure 8.	HF-LPT130A Basic Wireless Network Structure.....	16
Figure 9.	HF-LPT130A STA Network Structure.....	16
Figure 10.	Socket B function demo.....	18
Figure 11.	Multi-TCP Link Data Transmition Structure	19
Figure 12.	Open Web Management page.....	20
Figure 13.	1MB Flash Version webpage.....	21
Figure 14.	System Web Page	21
Figure 15.	Work Mode Page	22
Figure 16.	STA Setting Page	23
Figure 17.	STA Scan Page	23
Figure 18.	AP Setting Page	24
Figure 19.	Other Setting Page	25
Figure 20.	Account Page.....	25
Figure 21.	Upgrade SW page	25
Figure 22.	Restart Page	26
Figure 23.	Restore Page	26
Figure 24.	Internal Webpage	27
Figure 25.	STA Interface Debug Connection	27
Figure 26.	AP Interface Debug Connection	27
Figure 27.	“CommTools” Serial Debug Tools	28
Figure 28.	“TCPUDPDbg” Tools Create Connection	28
Figure 29.	“TCPUDPDbg” Tools Setting	29
Figure 30.	“TCPUDPDbg” Tools Connection	29
Figure 31.	Wireless Control Application.....	29
Figure 32.	Remote Management Application.....	30
Figure 33.	Transparent Serial Port Application	30

LIST OF TABLES

Table1.	HF-LPT130A Module Technical Specifications.....	8
Table2.	HF-LPT130A Pins Definition	9
Table3.	Absolute Maximum Ratings:.....	10
Table4.	Power Supply & Power Consumption:	11
Table5.	HF-LPT130A External Antenna Parameters	12
Table6.	HF-LPT130A Evaluation Kit Interface Description	13
Table7.	HF-LPT130A Web Access Default Setting.....	20

HISTORY

- Ed. V0.2** 07-25-2017 Internal Version.
- Ed. V0.2** 08-22-2017 Release Version
- Ed. V1.1** 13-10-2017 Add HF-LPT130A type module
- Ed. V1.2** 10-11-2017 Add HF-LPB130 type module
- Ed. V1.3** 03-01-2018 Update HF-LPT230 Pin, webpage config.

1. PRODUCT OVERVIEW

1.1. General Description

The HF-LPT130A is a fully self-contained small form-factor, single stream, 802.11b/g/n Wi-Fi module, which provide a wireless interface to any equipment with a Serial interface for data transfer. HF-LPT130A integrate MAC, baseband processor, RF transceiver with power amplifier in hardware and all Wi-Fi protocol and configuration functionality and networking stack, in embedded firmware to make a fully self-contained 802.11b/g/n Wi-Fi solution for a variety of applications.

The HF-LPT130A employs the world's lowest power consumption embedded architecture. It has been optimized for all kinds of client applications in the home automation, smart grid, handheld device, personal medical application and industrial control that have lower data rates, and transmit or receive data on an infrequent basis.

1.1.1 Key Application

- Remote equipment monitoring
- Asset tracking and telemetry
- Security
- Industrial sensors and controls
- Home automation
- Medical devices

1.1.2 Device Parameters

Table1. HF-LPT130A Module Technical Specifications

Class	Item	Parameters
Wireless Parameters	Certification	FCC/CE/SRRC/RoHS
	Wireless standard	802.11 b/g/n
	Frequency range	2.412GHz-2.462GHz
	RF Power	802.11b: 20.5dBm (@1Mbps)
		802.11g: 22.0dBm (@6Mbps)
802.11n: 21.5dBm (@HT20, MCS0)		
Antenna	monopole antenna	
Hardware Parameters	Data Interface	UART
		GPIO,SPI
	Operating Voltage	2.9~3.6V
	Operating Current	Peak (Continuous TX): 260Ma Average(STA, No data): 27mA Average(STA, Continuous TX): 35mA Average(AP): 80mA
	Operating Temp.	-25°C - 85°C
	Storage Temp.	-40°C - 125°C
	Dimensions and Size	22mm(L) × 14.3mm(W) × 8mm(H)
Software Parameters	Network Type	STA/AP/AP+STA
	Security Mechanisms	WEP/WPA-PSK/WPA2-PSK
	Encryption	WEP64/WEP128/TKIP/AES
	Update Firmware	Local Wireless, Remote OTA
	Customization	Support SDK for application develop
	Network Protocol	IPv4, TCP/UDP/HTTP/TLS(SDK)
	User Configuration	AT+instruction set. Android/ iOS Smart Link APP tools

1.2. Hardware Introduction

1.2.1. HF-LPT130A Pins Definition

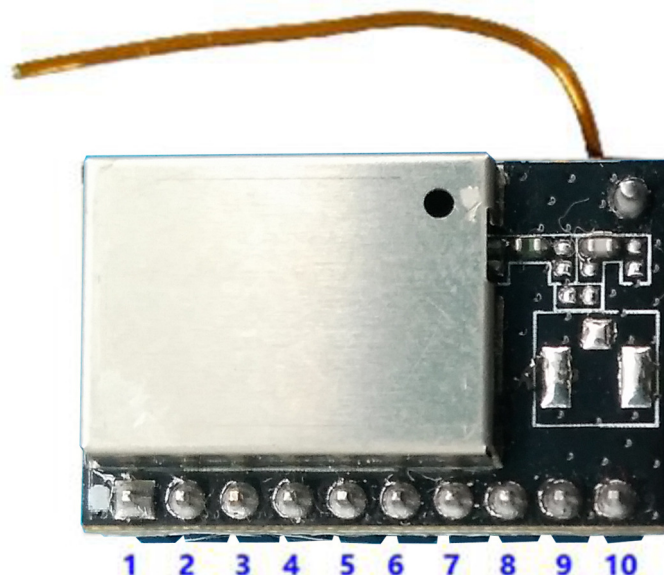


Figure 1. HF-LPT130A Pins Map

Table2. HF-LPT130A Pins Definition

Pin	Description	Net Name	Signal Type	Comments
1	Ground	GND	Power	
2	+3.3V Power	DVDD	Power	
3	Multi-Function	nReload	I,PU	Detailed functions see <Notes> GPIO3, PWM4 There will be 2ms output low when bootup, after then it works as input pull high.
4	Module Reset	EXT_RESETh	I,PU	“Low” effective reset input. There is RC reset circuit internally. External pull-up resistor is not allowed.
5	UART0	UART0_RX	I	3.3V UART0 Communication Input GPIO1
6	UART0	UART0_TX	O,PU	
7	GPIO25	GPIO25	I/O	GPIO25,PWM3
8	GPIO24	GPIO24	I/O	GPIO24,PWM2
9	Module Boot Up Indicator	nReady	O	“0” – Boot-up OK; “1” – Boot-up No OK; GPIO23, PWM1
10	Wi-Fi Status	nLink	O	“0” – Wi-Fi connect to router “1” – Wi-Fi unconncted; Detailed functions see <Notes>

Pin	Description	Net Name	Signal Type	Comments
				GPIO22,PWM0

<Notes>

I — Input; O — Output

PU—Internal Resistor Pull Up; I/O: Digital I/O; Power—Power

Supply nReload Pin (Button) function:

1. When this pin is set to “low” during module boot up, the module will enter wireless firmware and config upgrade mode. This mode is used for customer manufacture. (See Appendix to download software tools for customer batch configuration and upgrade firmware during mass production)
2. After module is powered up, short press this button (“Low” < 2s) and loose to make the module go into “Smart Link “ config mode, waiting for APP to set password and other information. (See Appendix to download SmartLink APP)
3. After module is powered up, long press this button (“Low” > 4s) and loose to make the module recover to factory setting.

High-Flying strongly suggest customer fan out this pin to connector or button for “Manufacture” and “ Smart Link” application.

nReady Pin (LED) function(Low effective):

1. OS initial finished indicator. Only after this pin output low, can the UART function be used.

nLink Pin (LED) function(Low effective):

1. At wireless firmware and config upgrade mode , this LED used to indicate configure and upgrade status.
2. At “Smart Link “ config mode, this LED used to indicate APP to finish setting.
3. At normal mode, it’s Wi-Fi link status indicator

High-Flying strongly suggest customer fan out this pin to LED.

PWM function:

PWM0~PWM3 support 1~100% duty, 5us~256speriod, PWM4 support 1~100% duty, 5us~4s period.

UART1 Debug :

1. Is used for debug log or firmware program.
2. Can be used for communication in SDK.

1.2.2. Electrical Characteristics

Table3. Absolute Maximum Ratings:

Parameter	Condition	Min.	Typ.	Max.	Unit
Storage temperature range		-40		125	°C
Maximum soldering temperature	IPC/JEDEC J-STD-020			260	°C

Supply voltage		0		3.6	V
Voltage on any I/O pin		0		3.6	V
ESD (Human Body Model HBM)	TAMB=25°C			2.5	KV
ESD (MM)	TAMB=25°C			0.25	KV

Table4. Power Supply & Power Consumption:

Parameter	Condition	Min.	Typ.	Max.	Unit
Operating Supply voltage		2.9	3.3	3.6	V
Supply current, peak	Continuous Tx		260		mA
Supply current,	STA No data transfer		27		mA
Supply current,	STA Continuous data transfer		35		mA
Supply current,	AP		80		mA

1.2.3. HF-LPT130A Mechanical Size

HF-LPT130A modules physical size (Unit: mm) as follows:

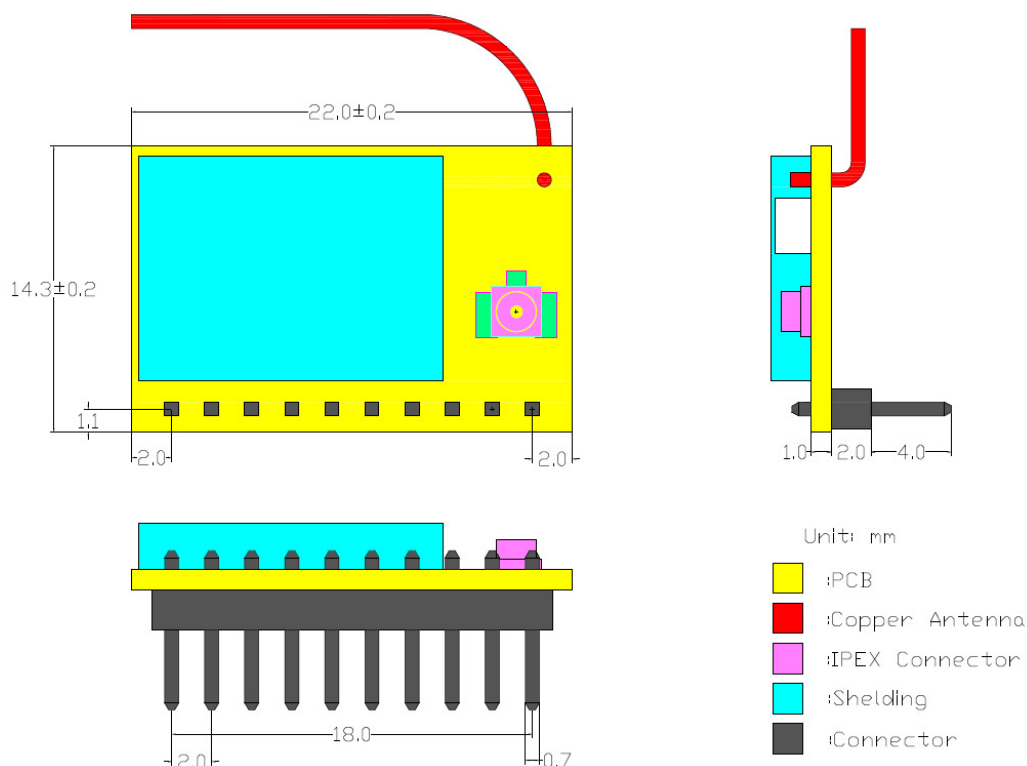


Figure 2. HF-LPT130A Mechanical Dimension

1.2.4. HF-LPT130A On-board Chip Antenna

HF-LPT130A module support internal copper line antenna option. When customer select internal antenna, you shall comply with following antenna design rules and module location suggestions:

- For customer PCB, RED color region (copper line antenna area) can't put componet or paste GND net;
- Antenna must away from metal or high components at least 10mm;

- Antenna can't be shielded by any metal enclosure; All cover, include plastic, shall away from antenna at least 10mm;

High-Flying suggest HF-LPT130A module better locate in following region at customer board, which to reduce the effect to antenna and wireless signal, and better consult High-Flying technical people when you structure your module placement and PCB layout.

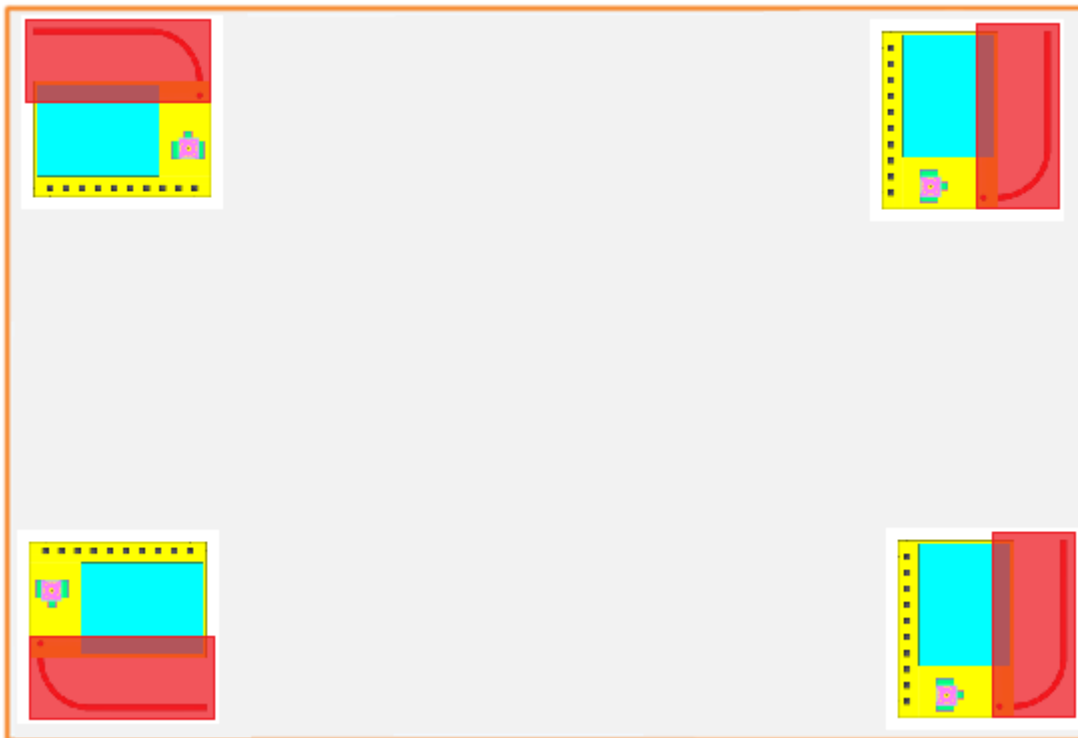


Figure 3. HF-LPT130A suggested Module Placement Region

1.2.5. Evaluation Kit

High-Flying provides the evaluation kit to promote user to familiar the product and develop the detailed application. The evaluation kit shown as below, user can connect to HF-LPT130A series module with

the RS-232 UART, USB (Internal USB to UART convetor) or Wireless interface to configure the parameters, manage the module or do the some functional tests.

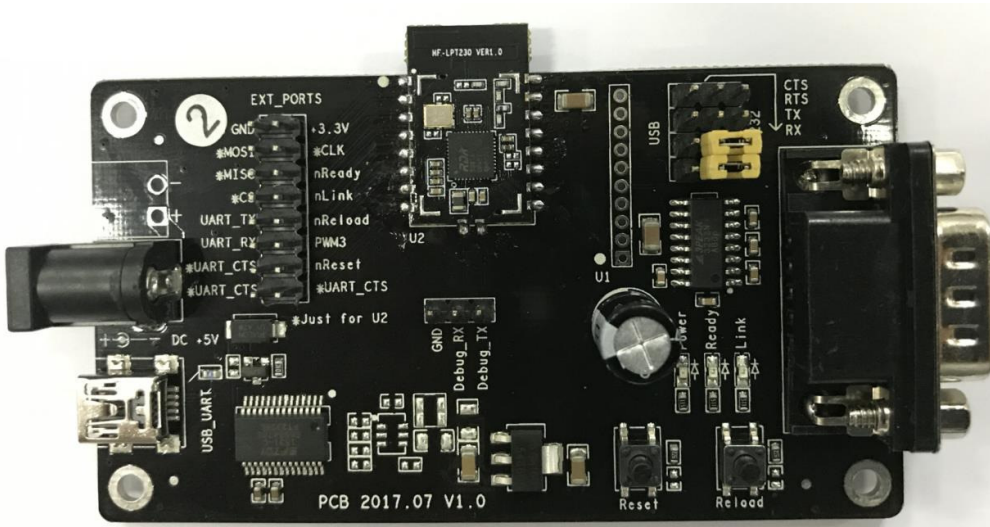


Figure 4. HF-LPT230 EVK

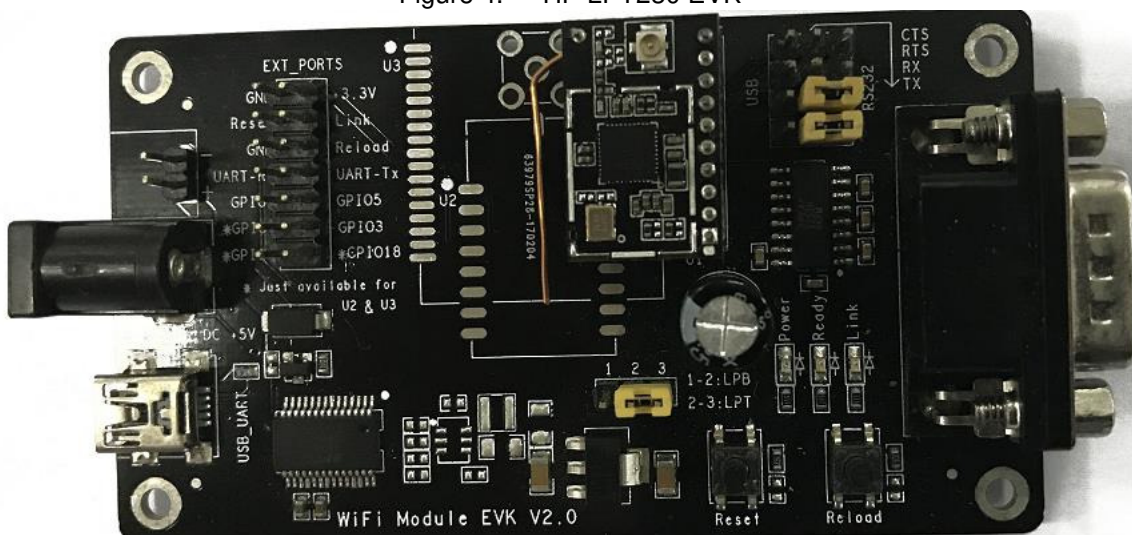


Figure 5. HF-LPT130A EVK

Notes: User need download USB to UART port driver from High-Flying web or contact with technical support people for more detail.

The external interface description for evaluation kit as follows:

Table6. HF-LPT130A Evaluation Kit Interface Description

Function	Name	Description
External Interface	RS232	Main data/command RS-232 interface
	USB	USB to UART interface
	DC5V	DC jack for power in, 5V input.
LED	Power	Power LED
	Ready	nReady LED
	Link	nLink LED

Button	nReload	Restore factory default configuration after push this pin more than 4s. See 1.2.1
--------	---------	---

1.2.7. Hardware Typical Application

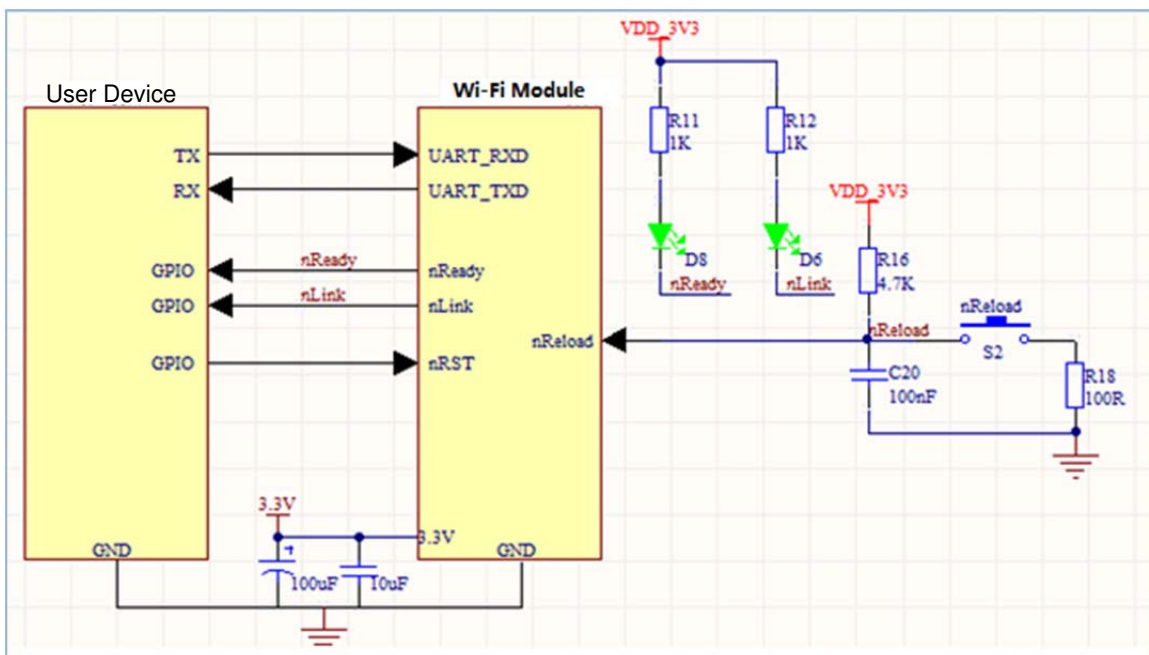


Figure 7. HF-LPT130A Hardware Typical Application

Notes:

nReset- Module hardware reset signal. Input. Logics “0” effective.

There is pull-up resistor internal and no external pull-up required. When module power up or some issue happened, MCU need assert nRST signal “0” at least 10ms, then set “1” to keep module fully reset.

nLink- Module WIFI connection status indication. Output.

(This pin is recommend to connect to LED, indicate status when the module in wireless upgrade mode)

When module connects to AP (AP associated), this pin will output “0”. This signal used to judge if module already at WiFi connection status. There is pull-up resistor internal and no external pull-up required. If nLink function not required, can leave this pin open.

nReady- Module boot up ready signal. Output. Logics “0” effective.

The module will output “0” after normal boot up. This signal used to judge if module finish boot up and ready for application or working at normal mode. If nReady function not required, can leave this pin open.

nReload- Module restore to factory default configuration. Input. Logics “0” effective.

(This pin is recommend to connect to button, is used to enter wireless upgrade mode)

User can de-assert nReload signal “0” more than 4s through button or MCU pin, then release, module will restore to factory default configuration and re-start boot up process.. If nReload function not required, can leave this pin open.

UART0_TXD/RXD- UART port data transmit and receive signal.

2. FUNCTIONAL DESCRIPTION

2.1. Wireless Networking

HF-LPT130A module can be configured as both wireless STA and AP base on network type. Logically there are two interfaces in HF-LPT130A. One is for STA, and another is for AP. When HF-LPT130A works as AP, other STA equipments are able to connect to HF-LPT130A module directly. Wireless Networking with HF-LPT130A is very flexible.

Notes:

AP: that is the wireless Access Point, the founder of a wireless network and the centre of the network nodes. The wireless router we use at home or in office may be an AP.

STA: short for Station, each terminal connects to a wireless network (such as laptops, PDA and other networking devices) can be called with a STA device.

2.1.1. Basic Wireless Network Based On AP

Infrastructure: it's also called basic network. It built by AP and many STAs which join in. The characters of network of this type are that AP is the centre, and all communication between STAs is transmitted through the AP. The figure following shows such type of networking.

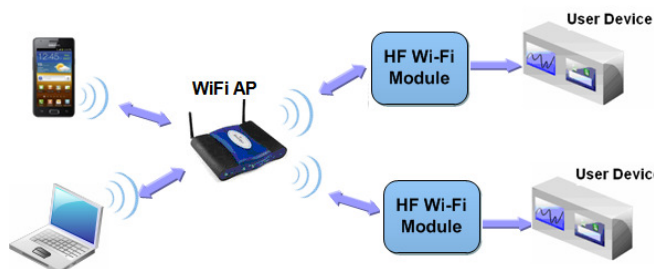


Figure 8. HF-LPT130A Basic Wireless Network Structure

2.1.2. Wireless Network Based On STA

HF-LPT130A module support STA network mode.

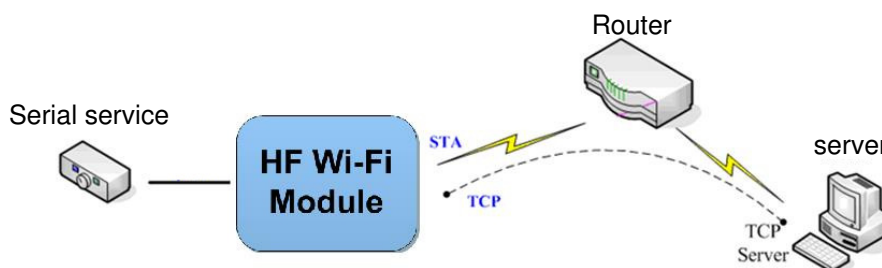


Figure 9. HF-LPT130A STA Network Structure

2.2. Work Mode : Transparent Transmission Mode

HF-LPT130A module support serial interface transparent transmission mode. The benefit of this mode is achieves a plug and play serial data port, and reduces user complexity furthest. In this mode, user should only configure the necessary parameters. After power on, module can automatically connect to the default wireless network and server.

As in this mode, the module's serial port always work in the transparent transmission mode, so users only need to think of it as a virtual serial cable, and send and receive data as using a simple serial. In other words, the serial cable of users' original serial devices is directly replaced with the module; user devices can be easy for wireless data transmission without any changes.

The transparent transmission mode can fully compatible with user's original software platform and reduce the software development effort for integrate wireless data transmission.

The parameters which need to configure include:

- **Wireless Network Parameters**
 - Wireless Network Name (SSID)
 - Security Mode
 - Encryption Key
- **TCP/UDP Linking Parameters**
 - Protocol Type
 - Link Type (Server or Client)
 - Target Port ID Number
 - Target Port IP Address
- **Serial Port Parameters**
 - Baud Rate
 - Data Bit
 - Parity (Check) Bit
 - Stop Bit
 - Hardware Flow Control

2.3. Encryption

Encryption is a method of scrambling a message that makes it unreadable to unwanted parties, adding a degree of secure communications. There are different protocols for providing encryption, and the HF-LPT130A module supports following:

- ◆ WEP
- ◆ WPA-PSK/TKIP
- ◆ WPA-PSK/AES
- ◆ WPA2-PSK/TKIP
- ◆ WPA2-PSK/AES

2.4. Parameters Configuration

HF-LPT130A module supports two methods to configuration parameters: **AT+instruction set**.

AT+instruction set configuration means user configure parameters through serial interface command. Refer to “AT+instruction set” chapter for more detail.

2.5. Firmware Update

HF-LPT130A module supports multiple upgrade methods:

- UART upgrade
- Local Network upgrade

2.6. SOCKET B Function

HF-LPT130A support double socket communication, the socket B function is disabled by default.

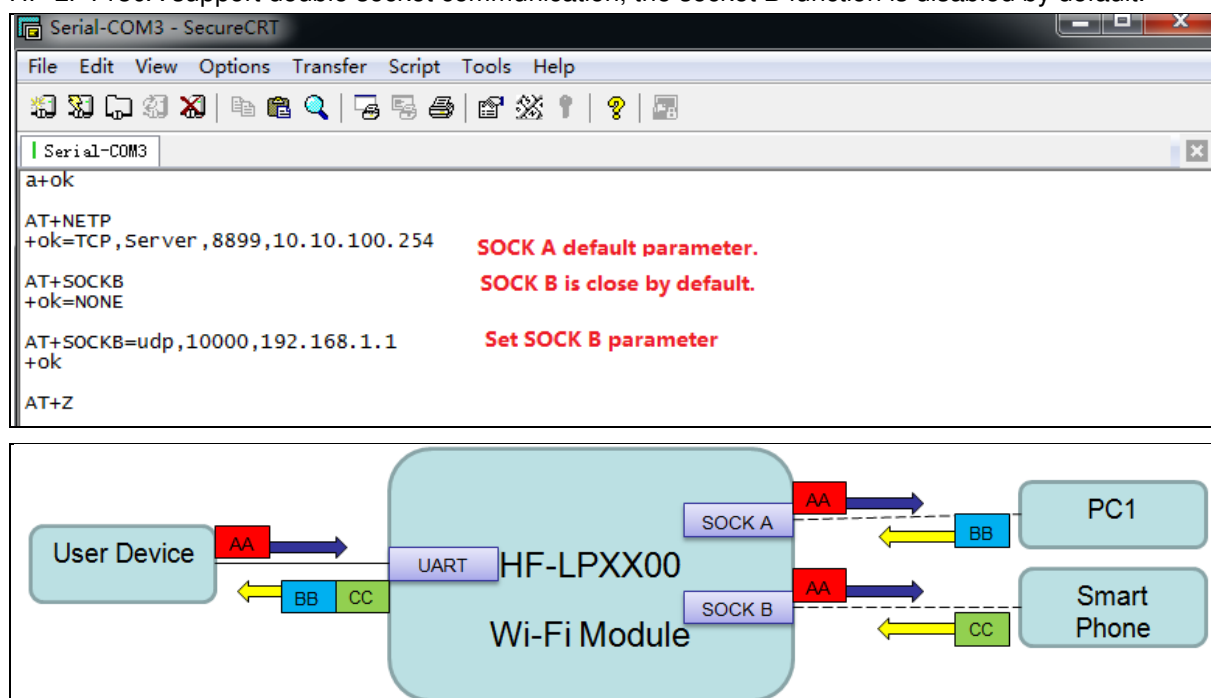


Figure 10. Socket B function demo

2.7. Multi-TCP Link Connection

When HF-LPT130A module SOCK A configured as TCP Server, it supports Multi-TCP link connection, and maximum 5 TCP clients permitted to connect to HF-LPT130A module. User can realize multi-TCP link connection at each work mode.

Multi-TCP link connection will work as following structure:

Upstream: All dates from different TCP connection or client will be transmitted to the serial port as a sequence.

Downstream: All data from serial port (user) will be replicate and broadcast to every TCP connection or client.

Detailed multi-TCP link data transmission structure as following figure:

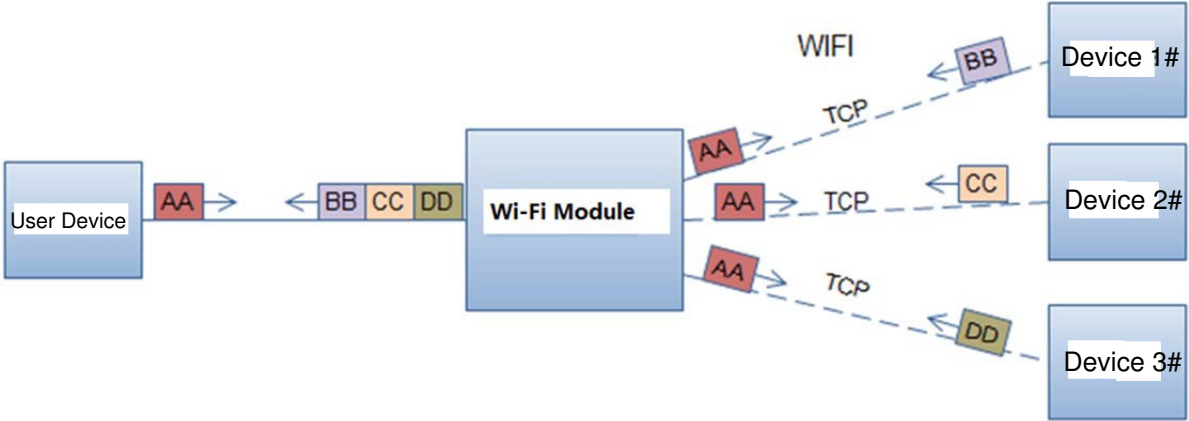


Figure 11. Multi-TCP Link Data Transmission Structure

3. OPERATION GUIDELINE

3.1. Configuration

When first use HF-LPT130A series modules, user may need some configuration. User can connect to HF-LPT130A module’s wireless interface with following default setting information and configure the module through laptop.

Table7. HF-LPT130A Web Access Default Setting

Parameters	Default Setting
SSID	HF-LPB130 HF-LPT230 HF-LPT130A
IP Address	10.10.100.254
Subnet Mask	255.255.255.0
Account	admin
Password	admin

3.1.1. Open Web Management Interface

There is internal webpage and external webpage in modules. The external webpage is for web management. The internal webpage is only for upgrading. 1MB Flash external webpage is different from 4MB Flash version, but the internal webpage is the same.

- Step 1: Connect laptop to SSID “HF-LPT230” of HF-LPT230 module via wireless LAN card;
- Step 2: After wireless connection OK. Open Wen browser and access “<http://10.10.100.254>”;
- Step 3: Then input user name and password in the page as following and click “OK” button.



Figure 12. Open Web Management page

The 1MB Flash version has the simple config page while the 4MB Flash version has the full config page. 1MB Flash version webpage is as following(By default is Chinese language, upgrade via internal webpage to upgrade English language).

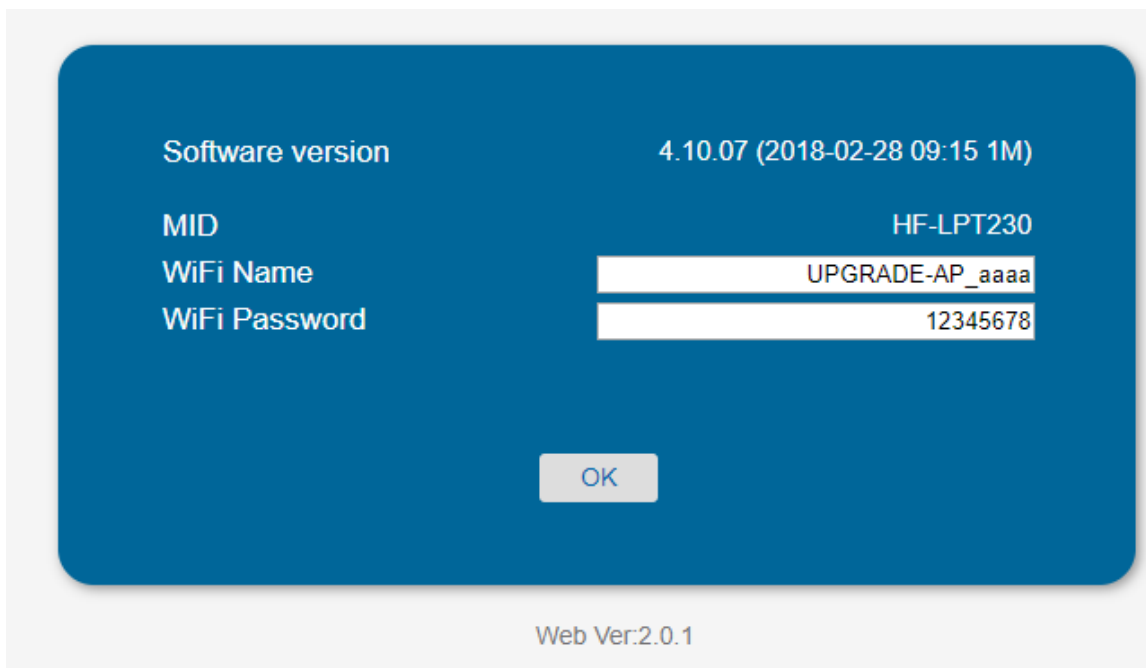


Figure 13. 1MB Flash Version webpage

The HF-LPT130A web management page support English and Chinese language. User can select language environment at the top right corner and click “Apply” button.

The main menu include nine pages: “System”, “Work Mode”, “STA Setting”, “AP Setting”, “Other Setting”, “Account”, “Upgrade SW”, “Restart”, “Restore”.

3.1.2. System Page

At this page, user can check current device’s important information and status such as: device ID (MID), software version, wireless work mode and related Wi-Fi parameters.

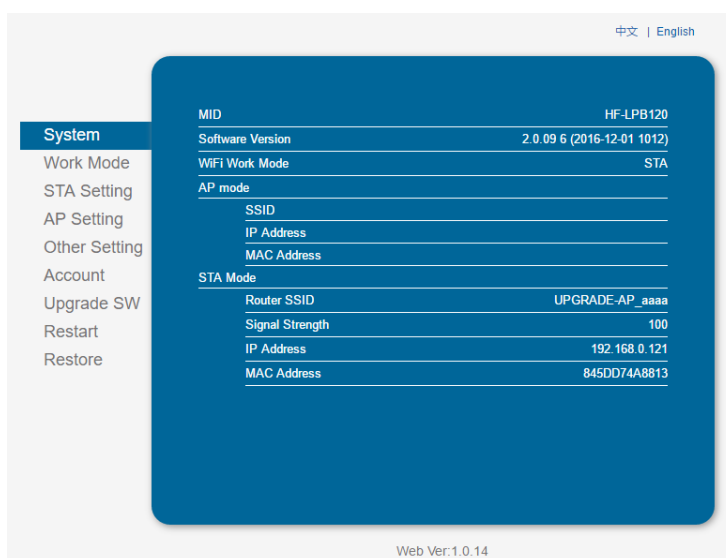


Figure 14. System Web Page

3.1.3. Work Mode Page

HF-LPT130A module can works at AP mode to simplify user's configuration, can also works at STA to connect remote server through AP router.

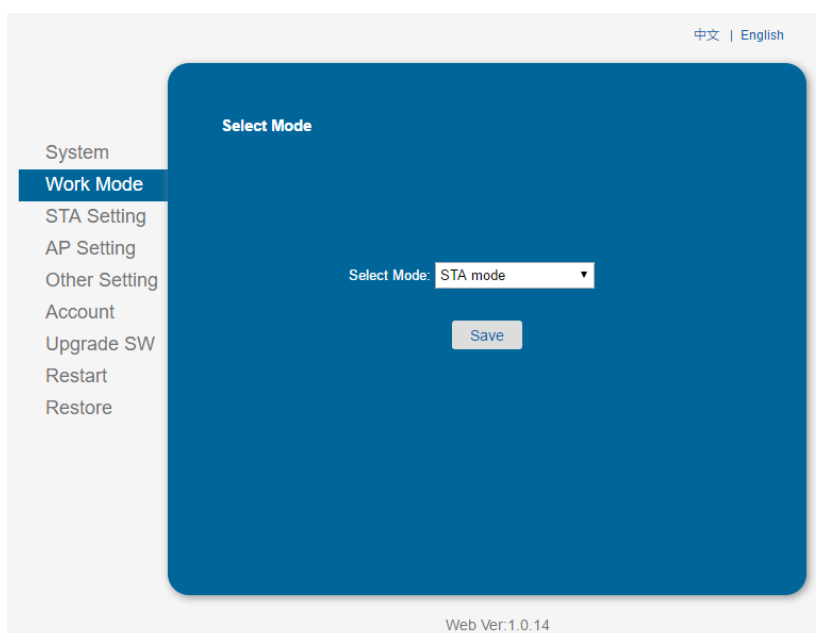


Figure 15. Work Mode Page

3.1.4. STA Setting Page

User can push "Scan" button to auto search Wi-Fi AP router nearby, and can connect with associate AP through some settings. Please note the encryption information input here must be fully same with Wi-Fi AP router's configuration, and then it can link with AP correctly.

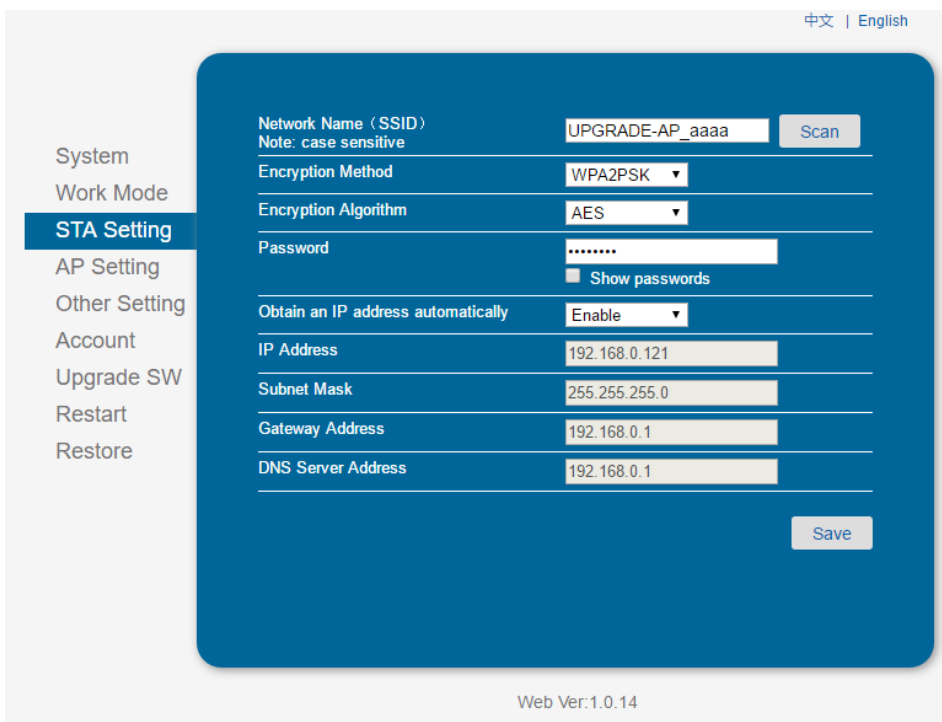


Figure 16. STA Setting Page

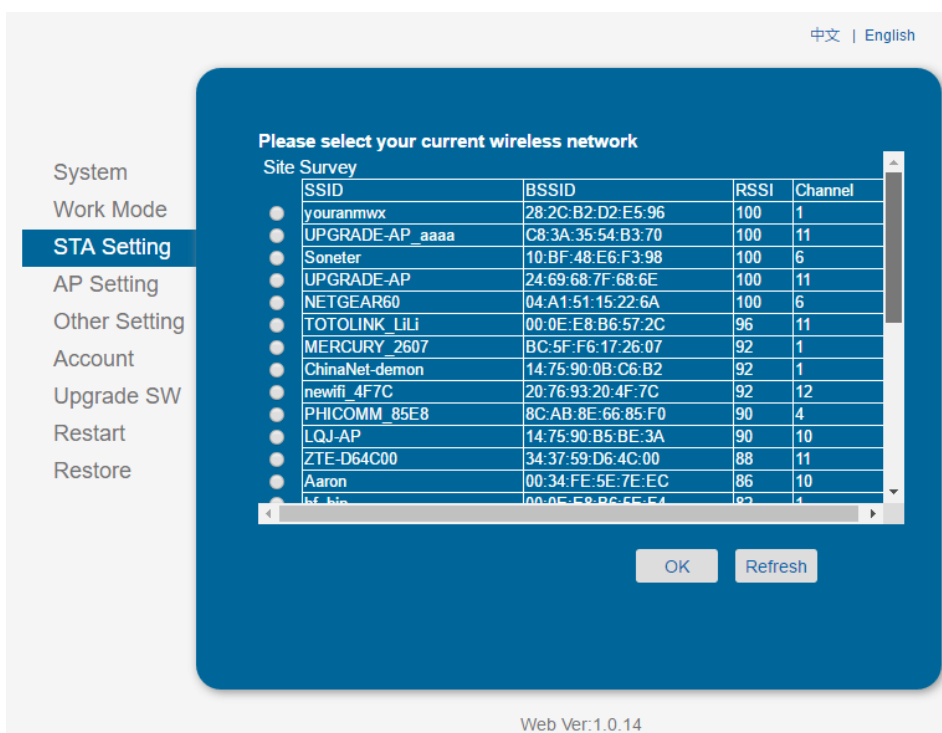


Figure 17. STA Scan Page

3.1.5. AP Setting Page

When user select module works at AP and AP+STA mode, then need setting this page and provide wireless and network parameters. Most of the system support DHCP to achieve IP address, so we suggest to “Enable” DHCP server in most applications.

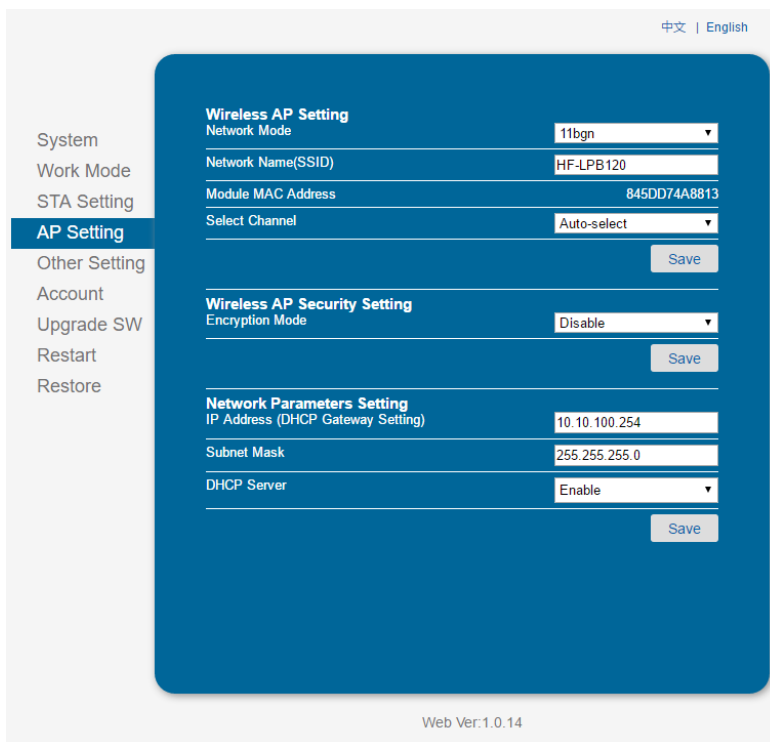


Figure 18. AP Setting Page

3.1.6. Other Setting Page

HF-LPT130A usually works at data transparent transmission mode. At this mode, the user device which connected with HF-LPT130A will connect and communicate with remote PC or server. At this page, user need setting serial port communication parameters and defines TCP related protocol parameters.

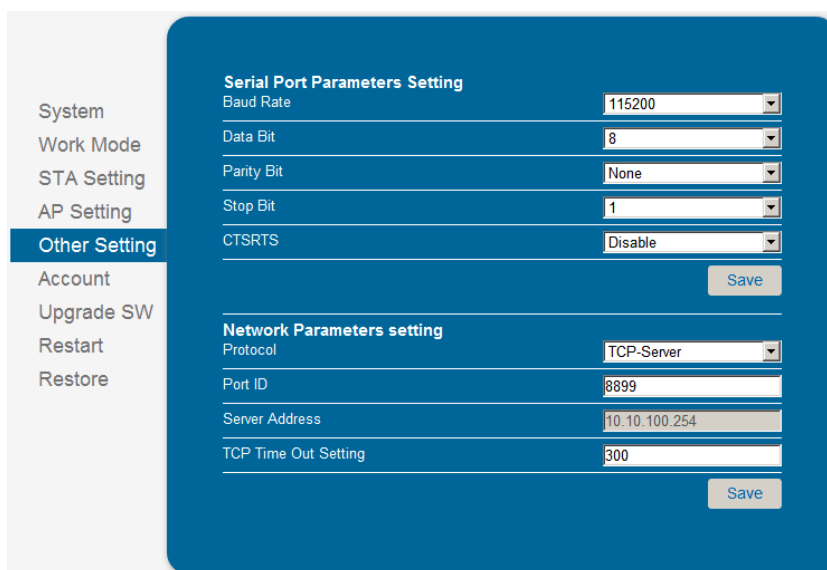


Figure 19. Other Setting Page

3.1.7. Account Management Page

This page set web server's user name and password.

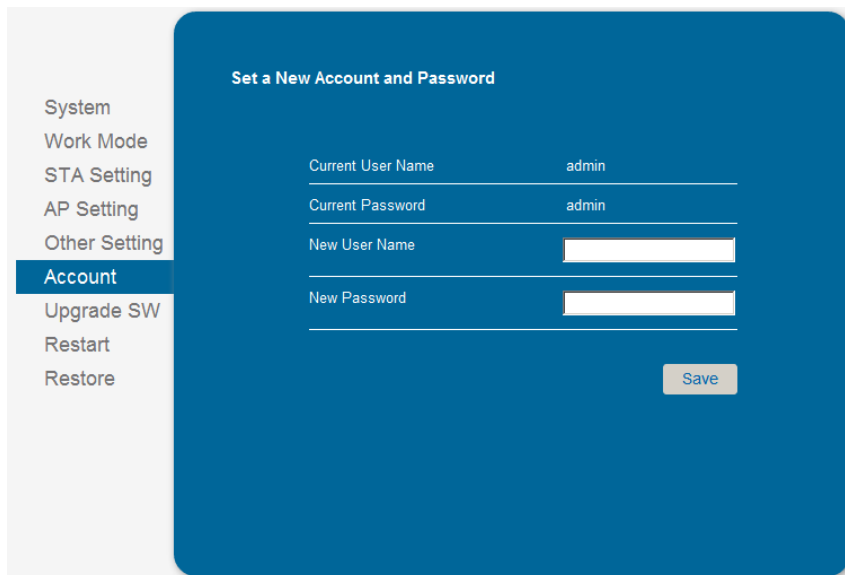


Figure 20. Account Page

3.1.8. Upgrade Software Page

User can upgrade new software (firmware) version through Wi-Fi. After upgrade success, need reboot it manually before new firmware valid.

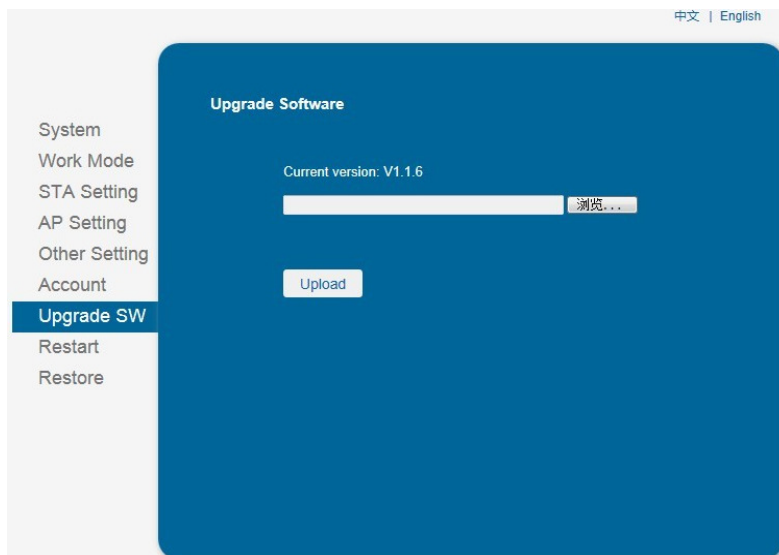


Figure 21. Upgrade SW page

3.1.9. Restart Page

Most of the setting and configuration can only effective after system restart. User shall restart after finish all setting.

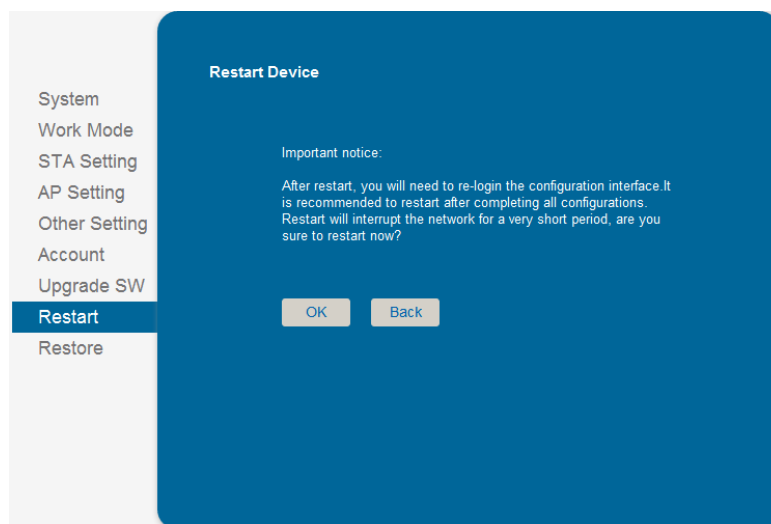


Figure 22. Restart Page

3.1.10. Restore Page

After module restore factory default setting, all user configuration profile will lose.

User can access <http://10.10.100.254> to set again, and user name and password is “admin”. HF-LPT130A will restore to AP mode for factory default setting.

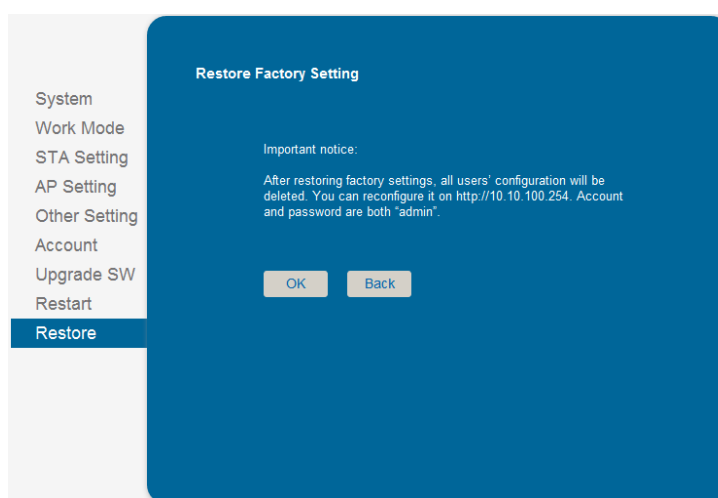


Figure 23. Restore Page

3.1.11. Internal Webpage

After wireless connection is OK. Open Wen browser and access “<http://10.10.100.254/iweb.html>”; It is for upgrading application and external webpage..

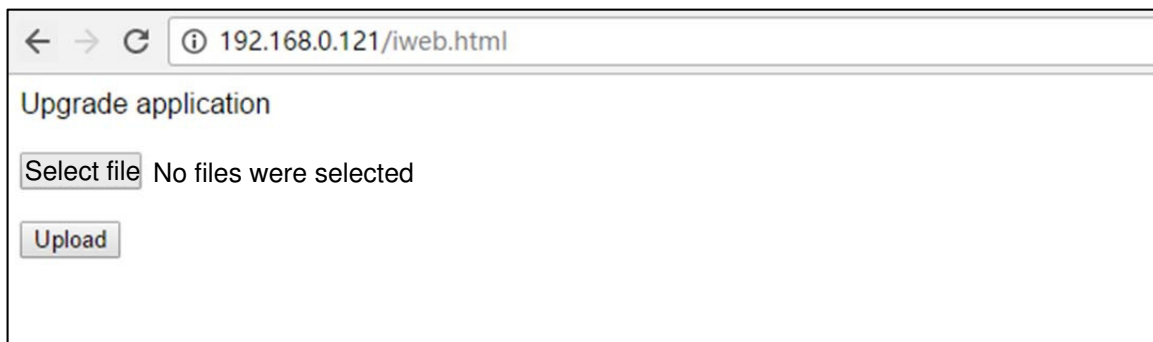


Figure 24. Internal Webpage

3.2. Usage Introduction

3.2.1. Software Debug Tools

High-Flying use two common software tools debugging and applying HF-LPT130A module. (User can also select other tools used to debug serial port).

- Serial Debugging Software: ComTools
- Ethernet Debugging Software: TCPUDPDbg

3.2.2. Network Connection

User can select two methods to connect HF-LPT130A module base on dedicated application.

- **Use HF-LPT130A STA interface.** HF-LPT130A and debug PC2 connect to a wireless AP, another PC1 (or user device) connect to HF-LPT130A module with serial port:



Figure 25. STA Interface Debug Connection

- **Use HF-LPT130A AP interface.** Debug PC2 connect to HF-LPT130A through wireless connection, another PC1 (or user device) connect to HF-LPT130A module with serial port.



Figure 26. AP Interface Debug Connection

3.2.3. Default Parameter Setting

- Default SSID: HF-LPT130A;

- Deault security mode: open,none;
- User UART parameter setting:115200,8,1,None;
- Default network parameter setting:TCP,Server,8899,10.10.100.254;
- Module IP address: dhcp,0.0.0.0,0.0.0.0,0.0.0.0;

3.2.4. Module Debug

PC1 open “CommTools” program, setting the same serial port parameters with HF-LPT130A module and open serial port connection.

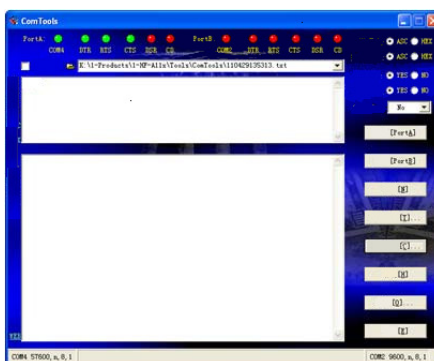


Figure 27. “CommTools” Serial Debug Tools

PC2 open “TCPUDPDbg” program, and create a new connection. If HF-LPT130A configured as Server mode, “TCPUDPDbg” Tools shall create “Client “mode connection. Or otherwise, create a “Server” mode connection.

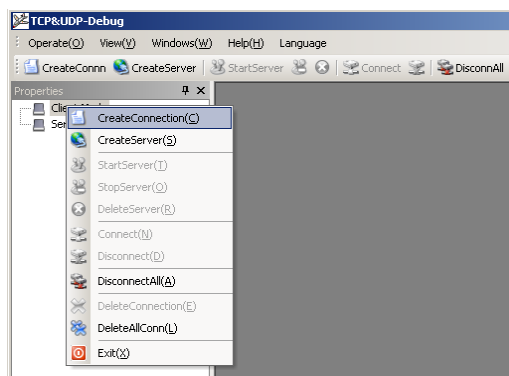


Figure 28. “TCPUDPDbg” Tools Create Connection

Then setting the TCP/UDP connection parameters. Default as following:

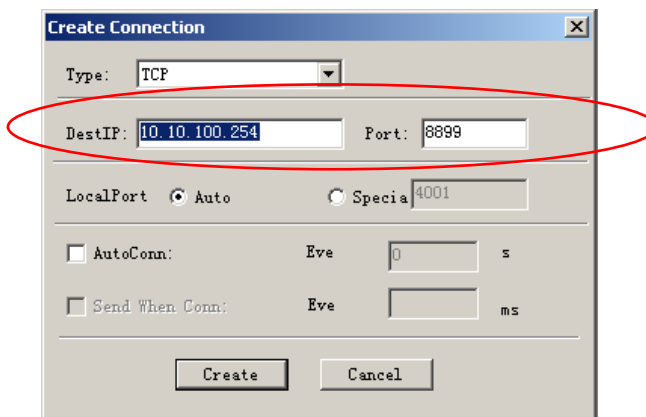


Figure 29. “TCPUDPDbg” Tools Setting

Then, click “Create” button to create a connection.

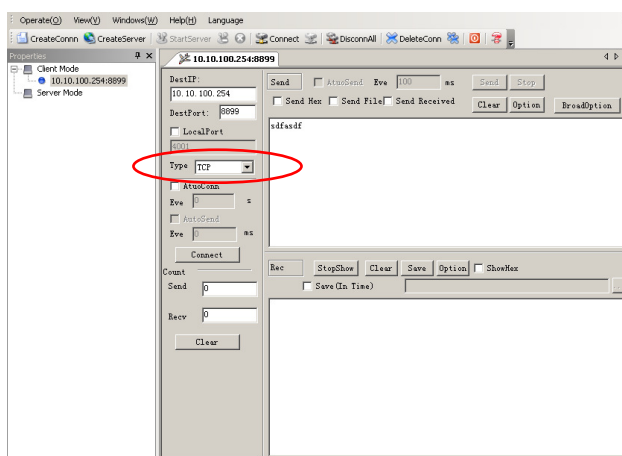


Figure 30. “TCPUDPDbg” Tools Connection

Now, in transparent transmission mode, data can be transferred from “CommTools” program to “TCPUDPDbg” program, or in reverse. You can see data in receiver side will keep same as in sender side.

3.3. Typical Application Examples

3.3.1. Wireless Control Application



Figure 31. Wireless Control Application

For this wireless control application, HF-LPT130A works as AP mode. Module’s serial port connects to user device. So, control agent (Smart phone for this example) can manage and control the user device through the wireless connection with HF-LPT130A module.

3.3.2. Remote Management Application

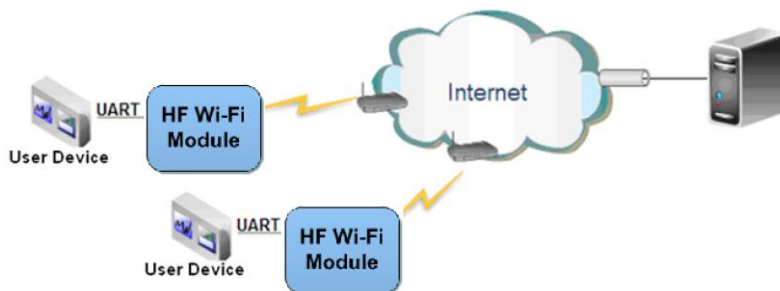


Figure 32. Remote Management Application

For this remote management application, HF-LPT130A works as STA mode and connects to Internet through wireless AP. Module configured as TCP Client and communicates with remote TCP server at Internet. Module’s serial port connects to user device.

So, user device’s data or sampling information can send to remote TCP server for storage or processing. Also remote TCP server can send command to control and manage the user device through the wireless network.

3.3.3. Transparent Serial Port Application

For this transparent serial port application, two HF-LPT130A modules connect as below figures to build up a transparent serial port connection. One HF-LPT130A works as AP mode, another HF-LPT130A works as STA mode. Make the STA device connects to AP.



Figure 33. Transparent Serial Port Application

© Copyright High-Flying, May, 2011

The information disclosed herein is proprietary to High-Flying and is not to be used by or disclosed to unauthorized persons without the written consent of High-Flying. The recipient of this document shall respect the security status of the information.

The master of this document is stored on an electronic database and is “write-protected” and may be altered only by authorized persons at High-Flying. Viewing of the master document electronically on electronic database ensures access to the current issue. Any other copies must be regarded as uncontrolled copies.

FCC Statement

Any Changes or modifications not expressly approved by the party responsible for compliance could void the user's authority to operate the equipment.

This device complies with part 15 of the FCC Rules. Operation is subject to the following two conditions:

- (1) This device may not cause harmful interference, and
- (2) This device must accept any interference received, including interference that may cause undesired operation.

FCC Radiation Exposure Statement:

This equipment complies with FCC radiation exposure limits set forth for an uncontrolled environment .This equipment should be installed and operated with minimum distance 20cm between the radiator& your body.

FCC Label Instructions

The outside of final products that contains this module device must display a label referring to the enclosed module. This exterior label can use wording such as: "Contains Transmitter Module FCC ID:2ACSV-HF-LPT130A",or "Contains FCC ID:2ACSV-HF-LPT130A", Any similar wording that expresses the same meaning may be used.