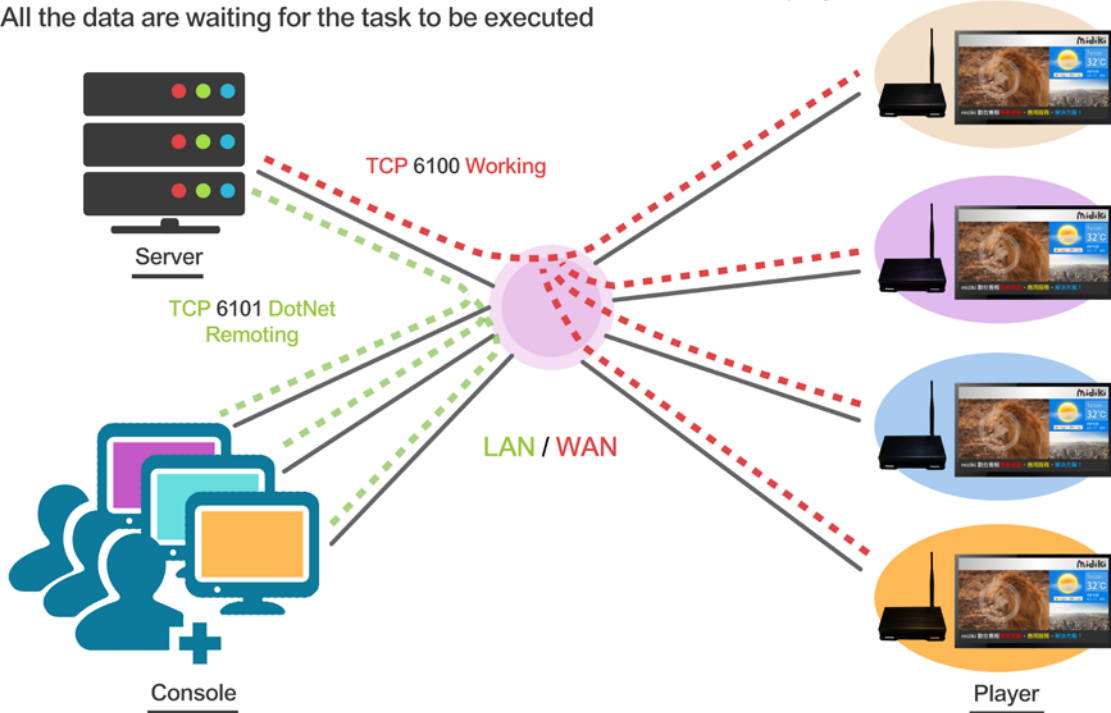


The server is the role of communication between the user and the player.
All the data are waiting for the task to be executed



- The client can connect to the server with multiple accounts to upload the content delegated tasks to the server.

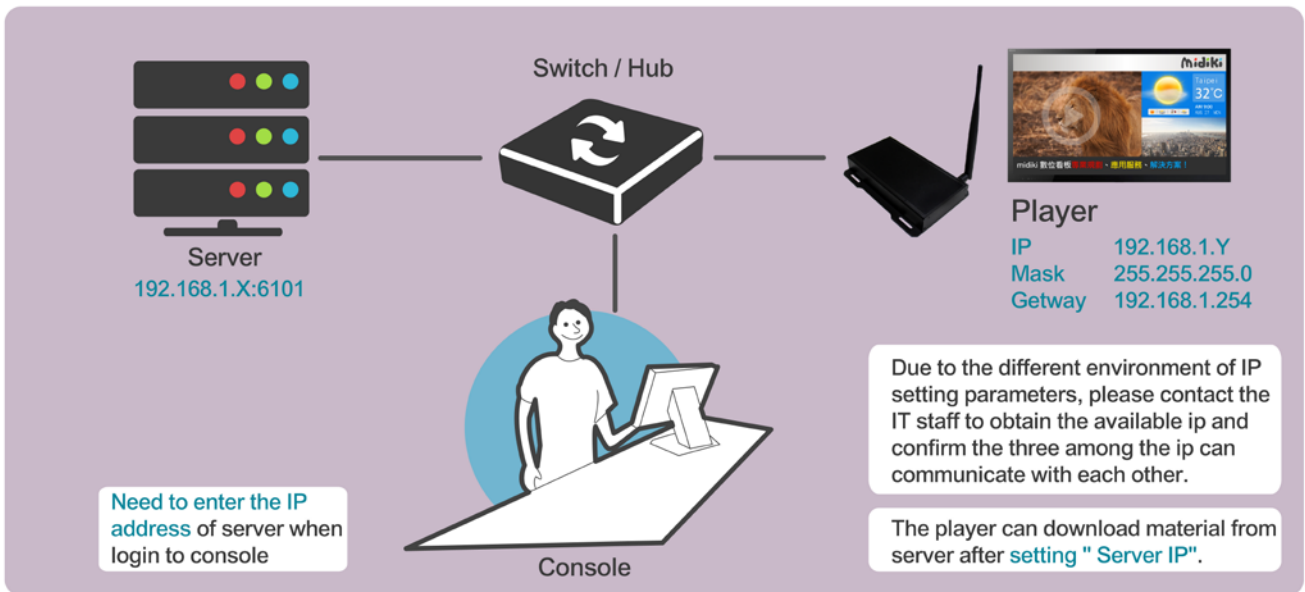
- The player will be scheduled to connect to the server to check the work requirement to download the task and set the task.

▲Through the connection model shown above, you can clearly understand how these 3 network components are connected with one another.

Note: TCP6100: The player can be remotely connected to the server through TCP Port 6100 Protocol. The trilateral networking environment allows intranet and internet to connect. In another word, the player can be placed anywhere (intra/internet), while the server is placed within offices, program editing and management can be done by logging onto the server, through other users' PC' s consoles.

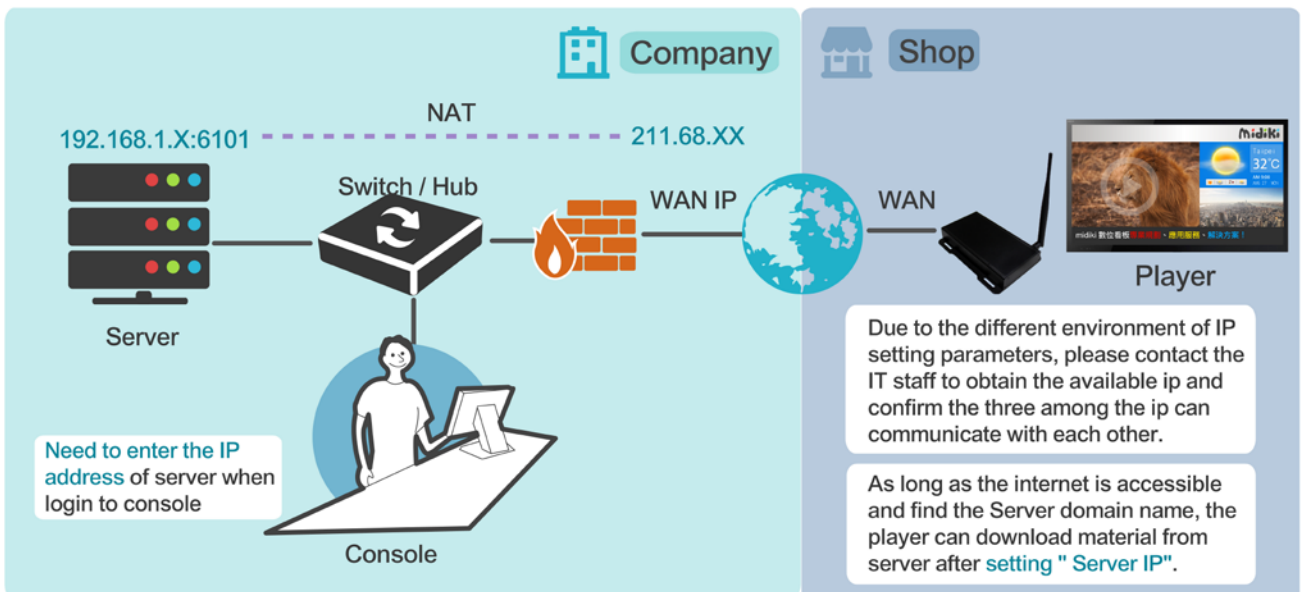
The type of connection consists of the following 3 types :

- All of them are connecting within intranet



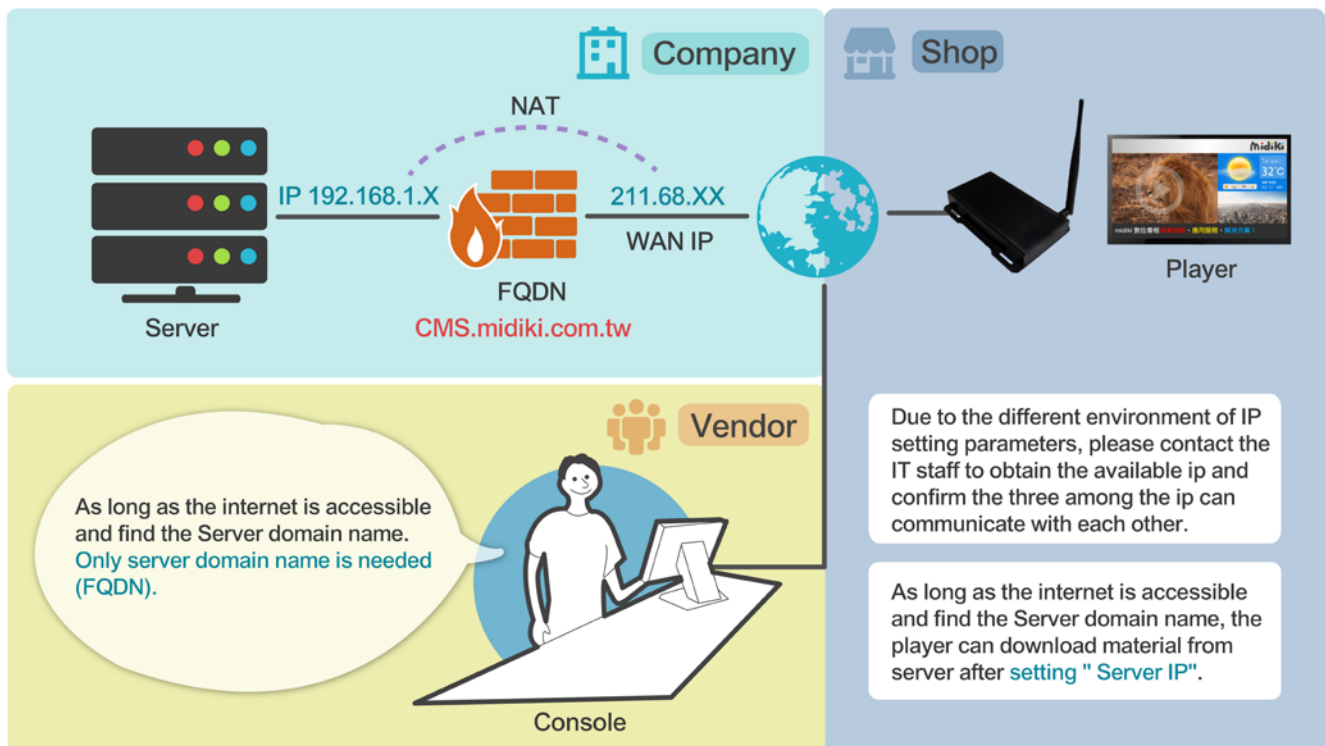
▲ The simplest intranet connection (LAN), once server IP is fixed, provides the connection between the player and other users.

- When the device (digital signage player) is locating on Internet



▲ To place player in external network (LAN + external network), to suit demand for access to many players at the channel, to be managed from corporate office.

● User and device is connecting via internet



▲When Console-end and Player are connected via remote log-in, Server acts as the cloud to provide shared access by multiple Console/Player to the server.

Key points to note in external network environment :

1. As far as Server is concerned, if Player is placed in external network, the firewall of the Server-end needs to release TCP Port: 6100 to be used by Player for external connection.
2. As far as Server is concerned, if Console has also been planned to be used in the external network, Server must open up TCP Port:6101, and coordinate with appropriate FQDN for remote-end Console to log in.

8. Back-up for Broadcast Programs

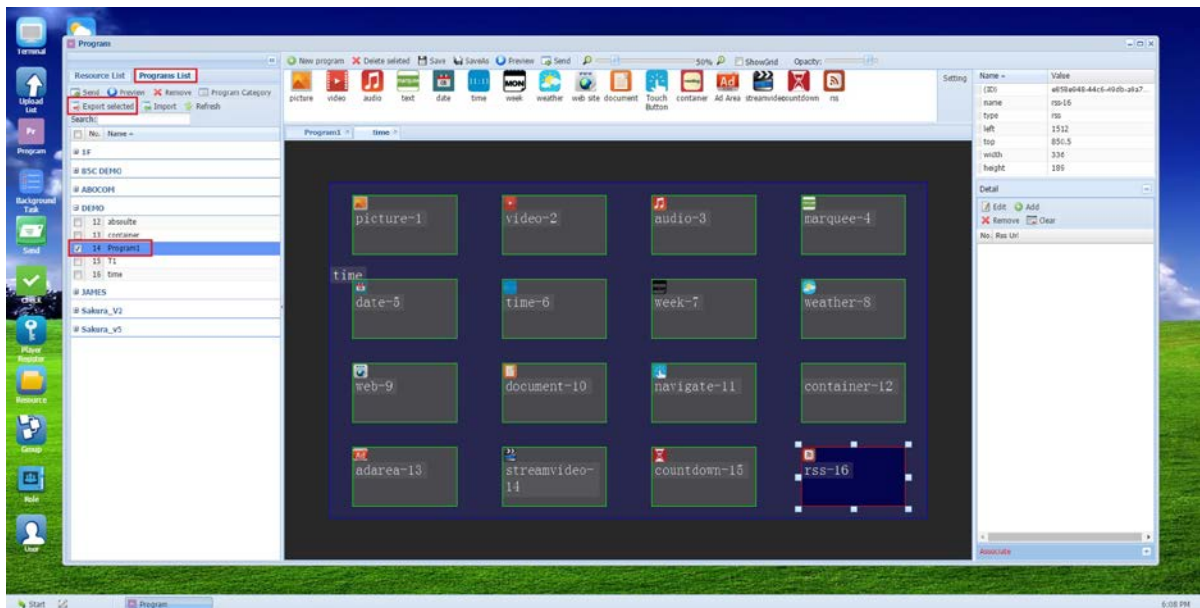
As operation time span increases, Broadcast Program list and material data will surely increase accordingly. For your operation of data maintenance, CMS can provide the complete back-up for Broadcast Programs. When performing back-up operation, it provides import and export functions for broadcast programs.

During the back-up process by exporting of broadcast programs, the composition design parameters will be directly re-produced, as well as filtering our all materials used by the to-be-exported program content. Therefore, every program back-up can ensure the integrity of the files, and that of design process.

You can import into another new server the content of an exported broadcast program from a server, as well as storing exported files into USB FLASH-DISK to be imported directly into Player for playback.

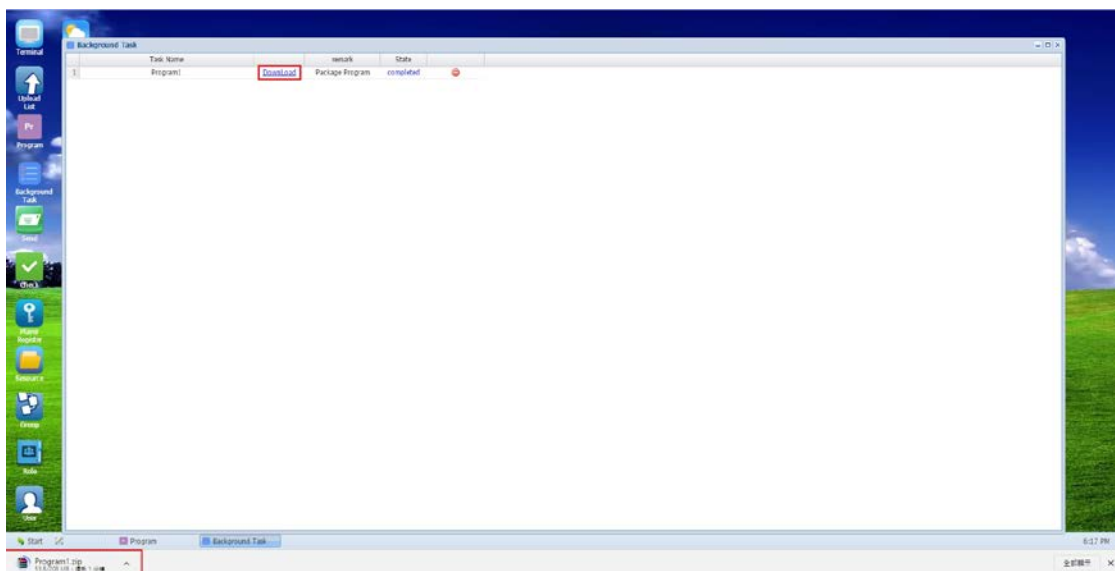
8.1 Program Export

8.1.1 Having logged in successfully through Google browser, open “Program”, and choose program to be exported, and click “Export”



Reminder: If targeted to-be-exported programs are linked interactively with multiple other programs, one only needs to select that main targeted program export, as the system will pack up all associated programs in one package and send out together.

8.1.2 Wait until system process to the end, and as the “download” icon appears, click “save” (The speed of packaging depends on different program elements, as processing of video format may slow in export speed)



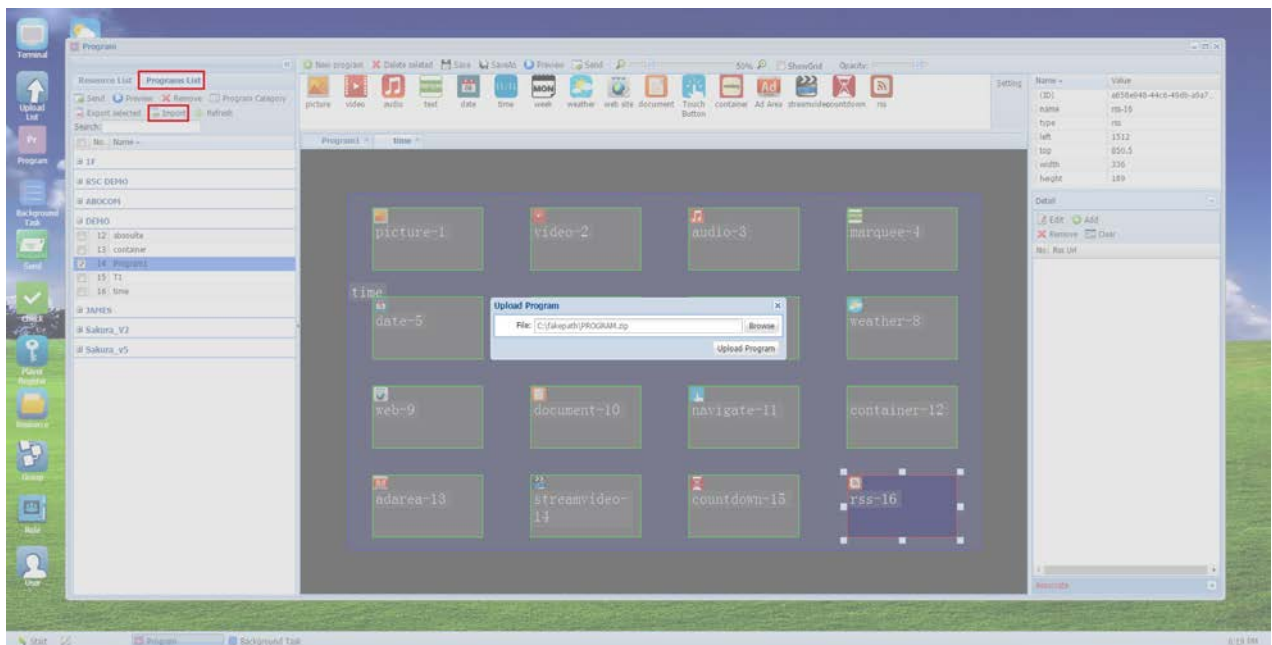
8.2 Program Import

There are 2 scenarios of program import: One is to import programs into terminals, and the

other is to import programs into service end.

8.2.1 、To import program into display terminals: With the compressed file of programs stored in USB drive which can be inserted into display terminals, the device automatically de-compresses the archived program file and copy to terminal. Once the copying is completed, the display terminal will prompt “Remove USB Flash Drive”, as the process is completed.

8.2.2 、Import programs to other server: Select “Program” icon, and click “Import”. Then choose program to be imported, and click “upload” to complete the procedure



8.3 Notes for importing programs to terminals

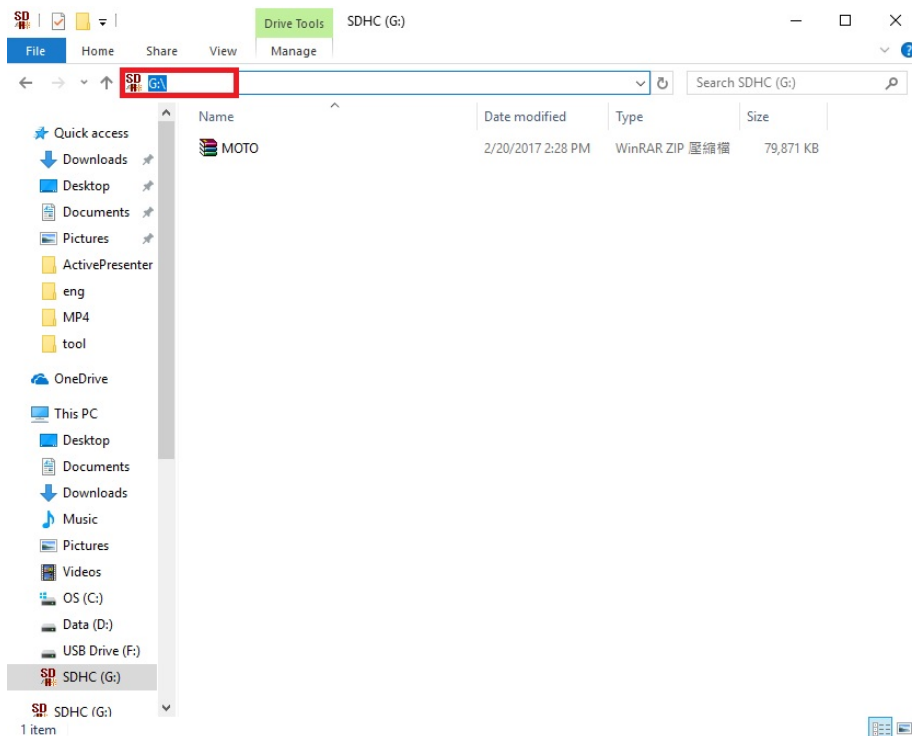
8.3.1 Terminal App must be executed before importing programs

```
Terminal
Program:
Device No.: DCCB253C3255
My Name: 02
My IP:
Server: 192.168.168.175:6100
Connected: no
```

8.3.2 The internet connection must be disconnected before importing programs, otherwise the program will not be changed (LAN and WiFi must be disconnected, as programs import via USB Flash Drive is in order to work under the circumstance without internet access)

8.3.3 2 USB Flash Drives cannot be inserted simultaneously.

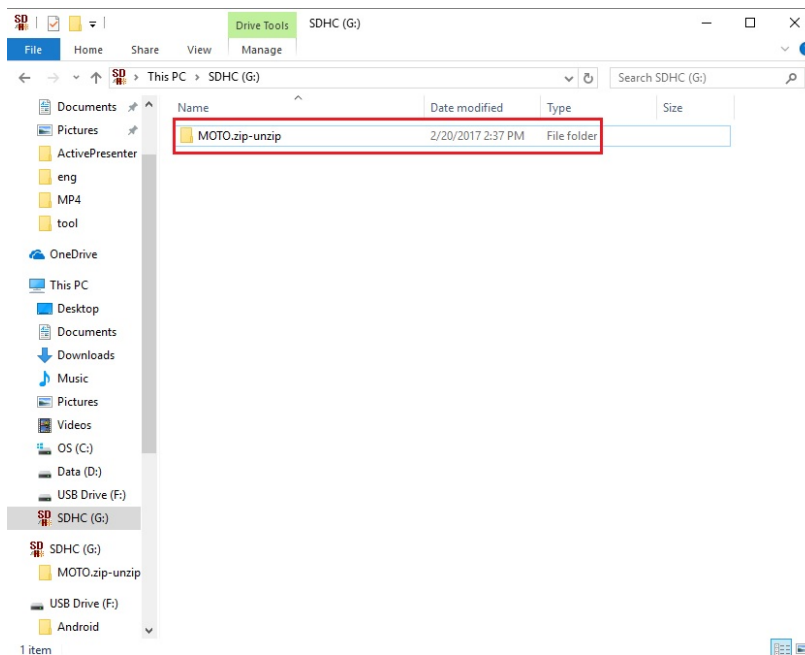
8.3.4 Compressed program files must be stored in the root directory of USB Flash Drive



8.3.5 Do not place more than one ZIP compressed files simultaneously into the root directory, as there can be only one compressed program file under the root directory of USB Flash Drive.

8.3.6 Before programs are imported into terminals, the de-compressed folder will be generated

in USB Flash Drive first, and hence import to the terminals . Therefore, after program import is completed, the original compressed program file will not be found in the USB Flash Drive but the de-compressed folder will.



8.4 Scenarios regarding terminal interface when importing programs

Per the illustration of display on Android terminals shown below, once the program copy is completed, program will automatically start.





Terminal Program: Copying

```
Device No.: DC0B253C3201
copying /mnt/external_sd/MOTO.zip-unzip/resource/opt/resources/MOTO/image/2013_YamahaLogomark-Slogan-3d-red-
RGB_En.jpg.hash
copying /mnt/external_sd/MOTO.zip-unzip/resource/opt/resources/MOTO/image/MT07_Banner2016.jpg.hash
copying /mnt/external_sd/MOTO.zip-unzip/resource/opt/resources/MOTO/image/MT03ABS_Banner.jpg
copying /mnt/external_sd/MOTO.zip-unzip/resource/opt/resources/MOTO/image/MT03-01.jpg.hash
copying /mnt/external_sd/MOTO.zip-unzip/resource/opt/resources/MOTO/image/MT03-01.jpg
copying /mnt/external_sd/MOTO.zip-unzip/resource/opt/resources/MOTO/image/R3ABS_Banner.jpgbegin copy
/mnt/internal_sd/howfor_player/resource/opt/resources/MOTO/video不存在，准备创建。。。
copying /mnt/external_sd/MOTO.zip-unzip/resource/opt/resources/MOTO/video/R3.mp4.hash
copying /mnt/external_sd/MOTO.zip-unzip/resource/opt/resources/MOTO/video/MT07.mp4.hash
copying /mnt/external_sd/MOTO.zip-unzip/resource/opt/resources/MOTO/video/MT03.mp4
copying /mnt/external_sd/MOTO.zip-unzip/resource/opt/resources/MOTO/video/MT00.mp4.hash
```

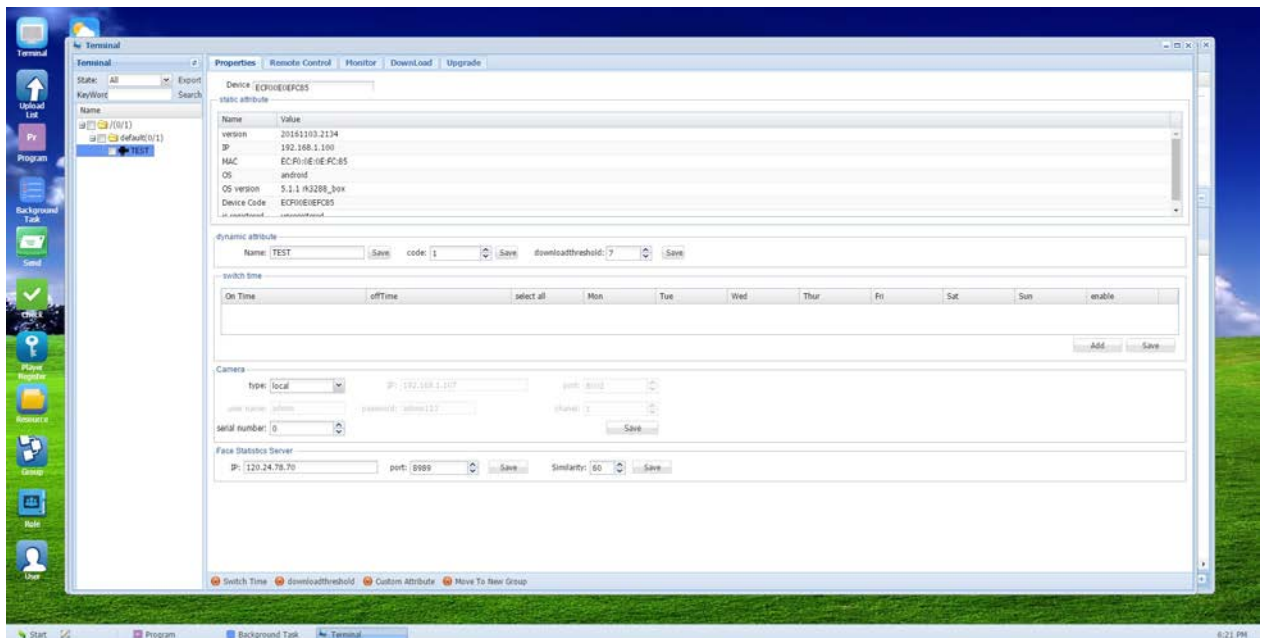
Connected: n

unzip success

9. Terminal Management

9.1 Attributes

Terminal static attributes can be readily checked, with terminal name and ON/OFF timer set: Operation of Shutdown/Reboot timer for Windows terminals requires terminals and server to be in the same subnet or domain, with supporting network wake-on. Server needs to work with internet access all time.



Static Attributes: Terminal App version, IP Address, MAC number, system type, OS versions, device numbers and status of registration of terminal devices can readily be checked.

Dynamic Attributes: Terminal name, device number and synchronization valve can be adjusted.

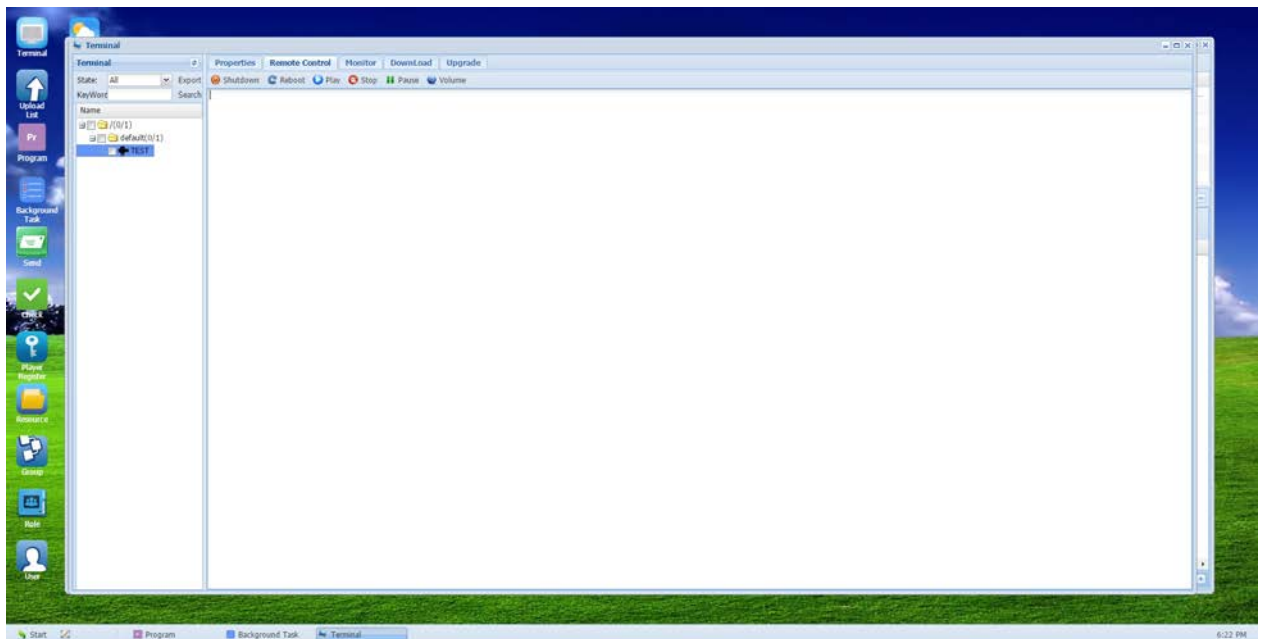
Shutdown/Reboot Timer: To set timing for the timer-switch

Synchronization valve value: In order to avoid the data volume of the program downloaded

by the digital signage exceeding the maximum load value (different from model to model), user can designate the number of days of data can be transmitted, with the maximum number of day being 30 days. To use the synchronization valve value of 7 days, when the digital signage receives the approved scheduling list, the machine will first download the first 7-day of program data in the scheduling list, and subsequently, every 7-day of program data in the scheduling list will also be downloaded to server.

9.2 Remote Control

Reboot, resolutions and execution are only supported on Windows System, as other instructions such as, shutdown, reboot, play, stop, pause and volume-control, are supported on Windows and Android.



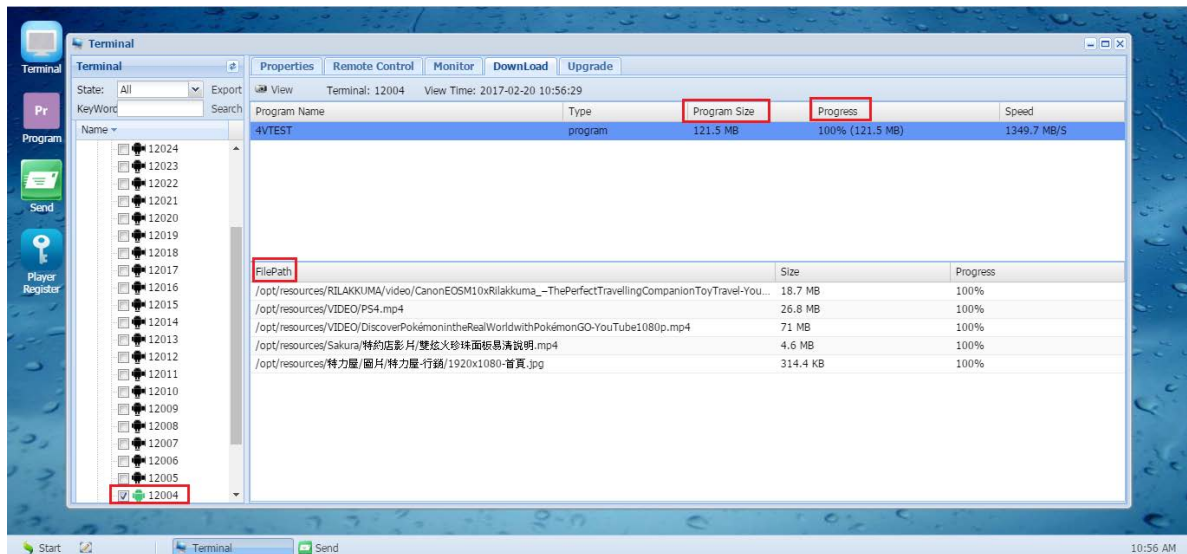
9.3 Monitor (screen snapshot)

Tick the corresponding terminals, and click "screenshot", picture snapshot of the current playback interface of the signage terminal can be generated.



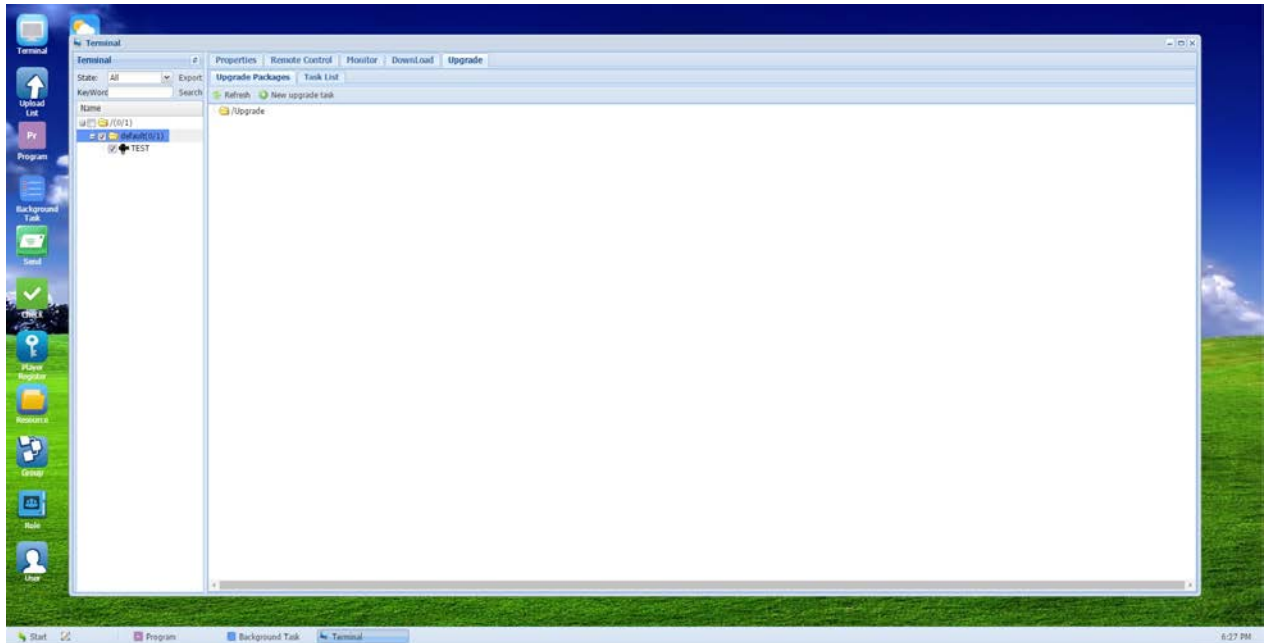
9.4 Download

Download progress of program broadcast to terminals can be readily monitored



9.5 Upgrade

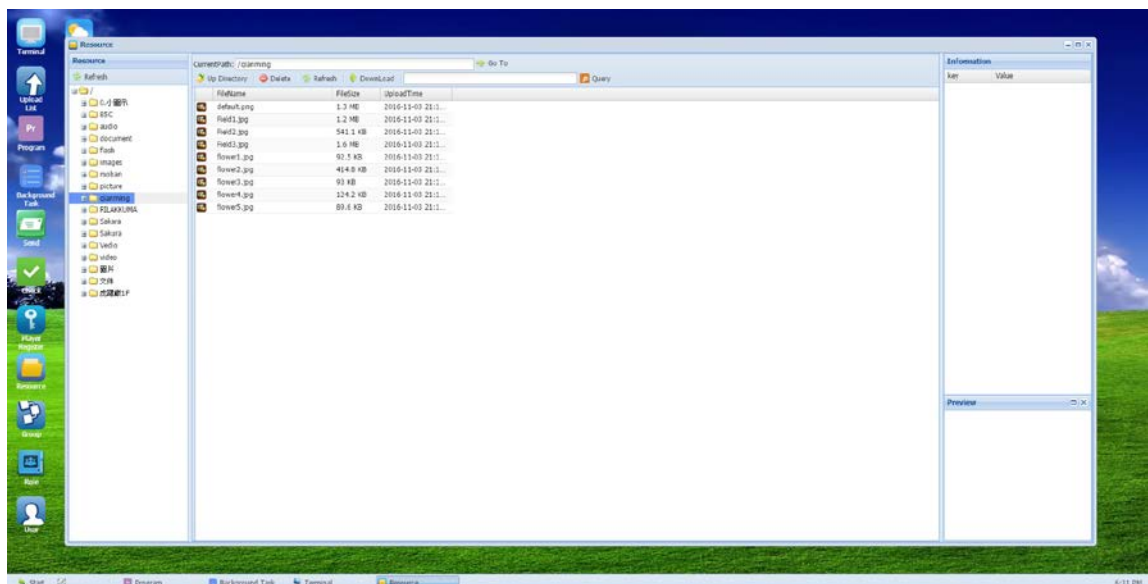
Automatic remote online upgrade for the terminals is supported for future maintenance and operation expansion, however, this function requires operation by trained engineers.



10. Other Features

10.1 Resource (Resource Management)

Resource management is mainly used for uploading and managing materials needed for editing programs.

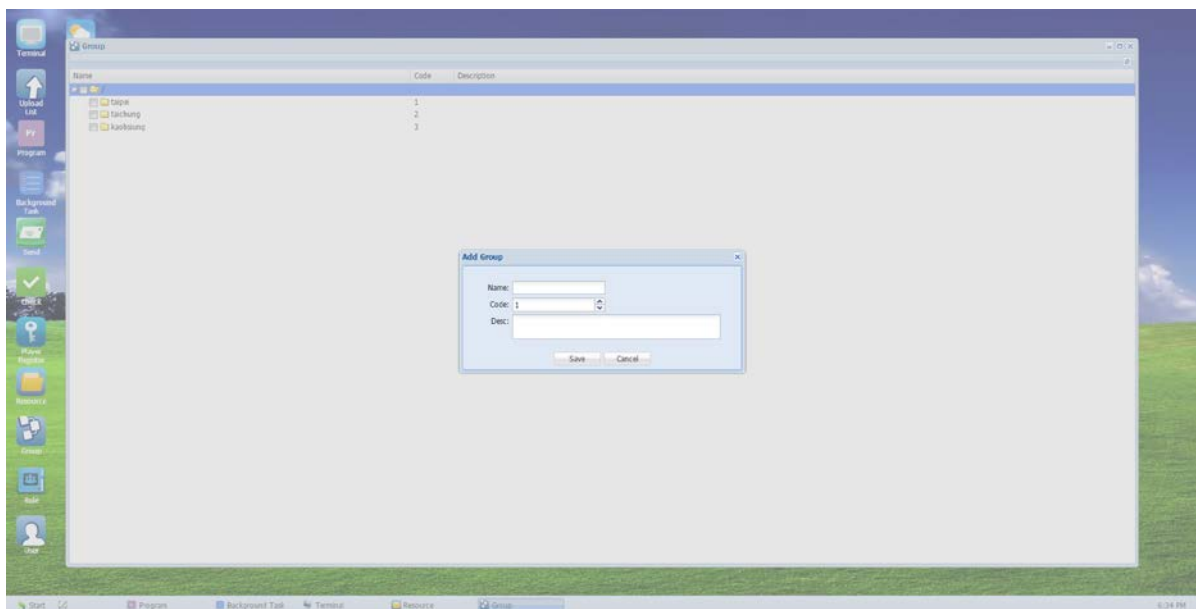


10.2 Management of Authorization

CMS Advertising Content Management System can allow many users and multiple

PC' s to log into Server PC for operation, without requiring other users to install any program in the PC to execute log-in through internal network via web browser (as well as installing server in overseas sites, executing remote log-in through actual IP address). Multiple-manager account is suited for organizational operation needs, able to provide the authorization for access to all kinds of functionalities to authorized account-holders, while effectively managing their usage behaviors.

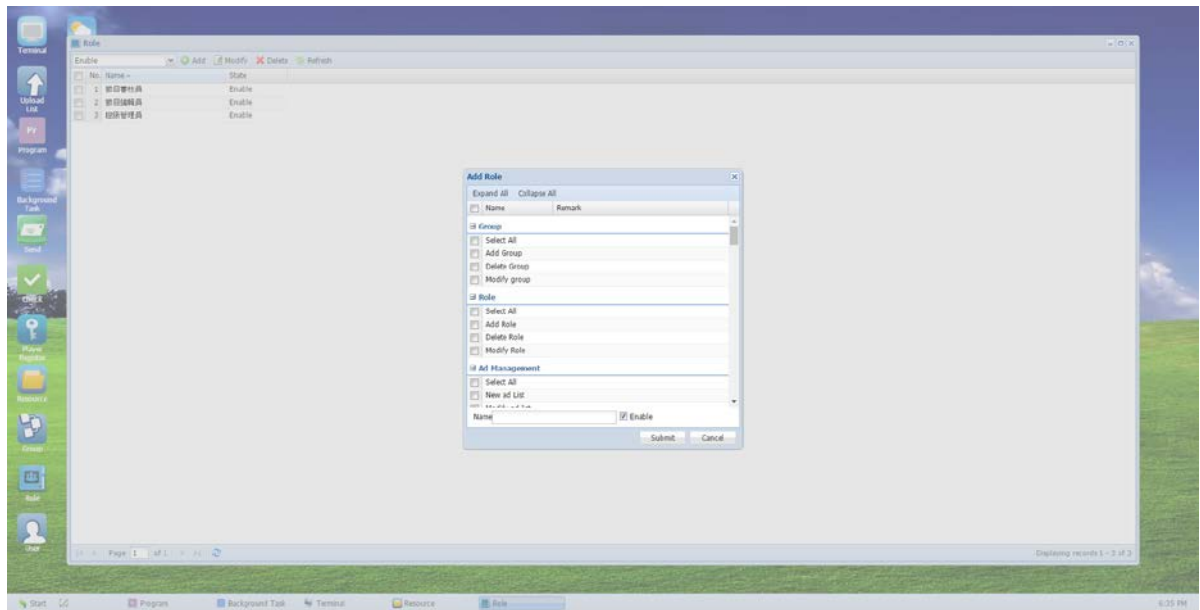
10.2.1 **Group:** Mainly for grouping various needs from the terminal end.



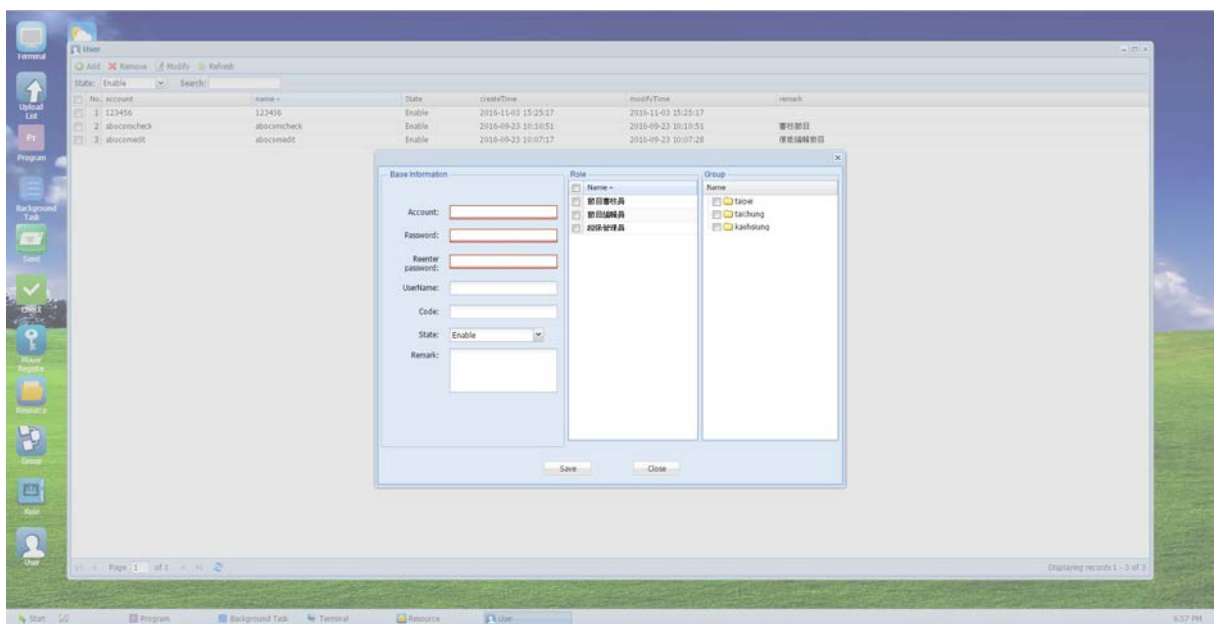
Once grouping is set, "terminal" icon can be moved to corresponding terminal grouping

10.2.2 **Role:** Add various roles with designation authorization of scope of feature usages

For example, a role of "Program Editor" is created, it will only be given authorization for feature usage allowance during program production.



10.2.3 User: Through different grouping and roles given to various users, discrete and appropriate authorization level can be granted to each.



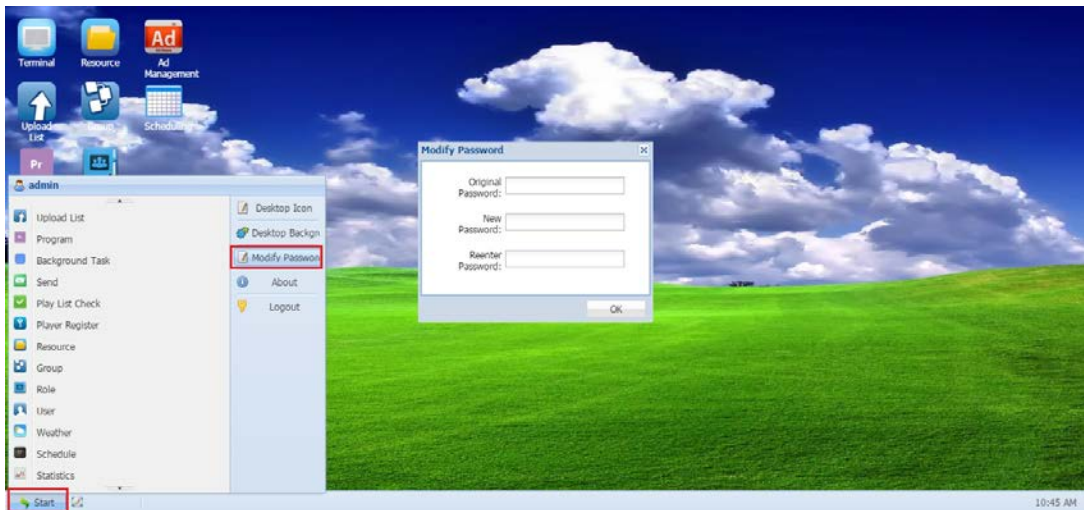
For example, while creating a new user account for program editor, the role is dependent on its authorization level.

The desktop, once successful logged into this account, is shown per the picture below, only elements permitted for the production of this program shall be kept.



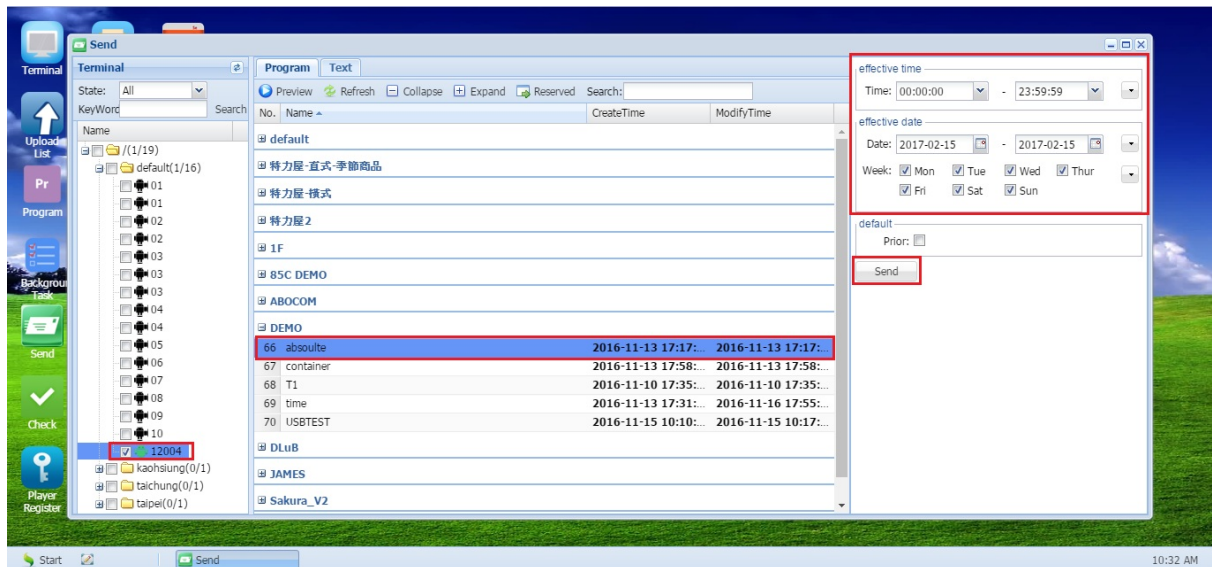
Note: As Super-Manager (admin) establishes accounts for other users, we recommend that, after the first-time log-in of any user, please change the original password (admin).

The password modification can be done, per the diagram shown below:

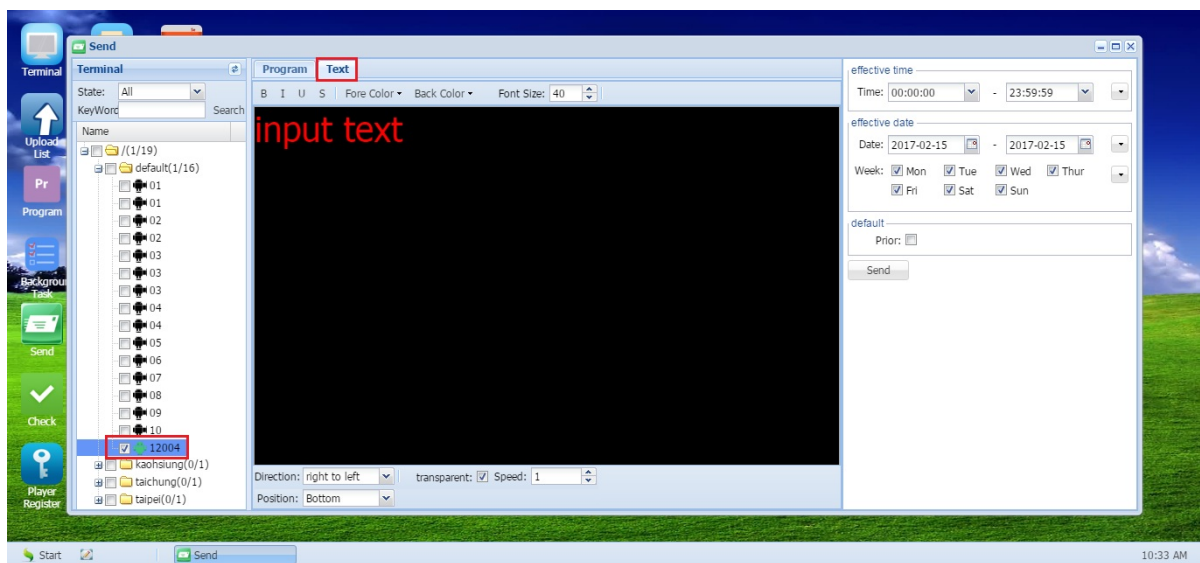


10.3 Send & Check

10.3.1 **Send:** Programming can be optioned for either existing program content control or instant playback at the terminals

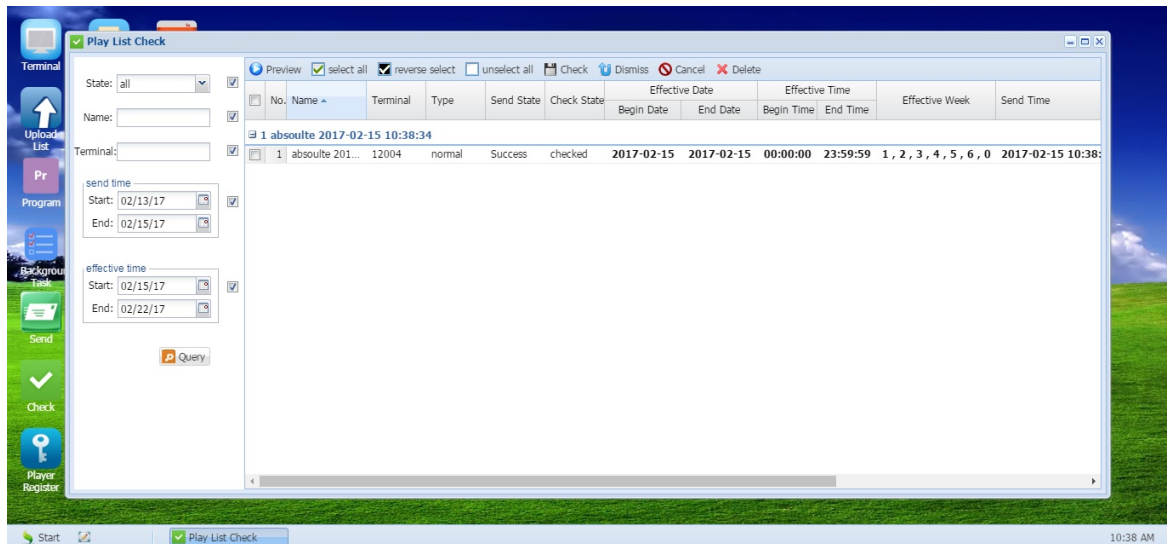


Subtitle (Flash News Messaging) : It allows immediately text-messages appearing in digital signage display, which can be played at set points of time.



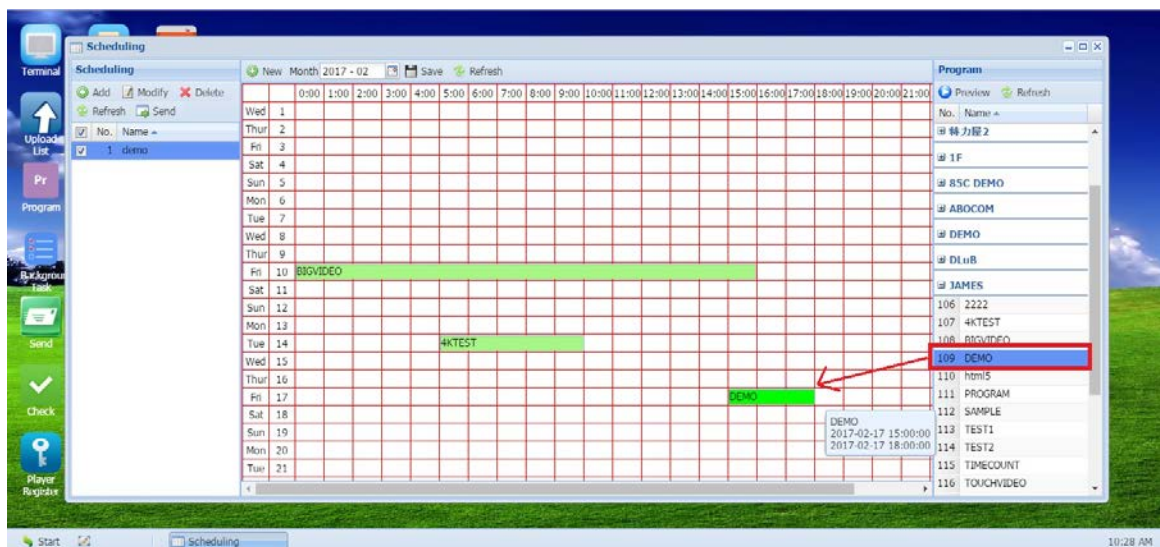
Check: To approve the program that sent to terminals or scheduled to send to terminals.

The programs sent by unauthorized accounts such as program editor or artwork staff sent to terminals need broadcast approval by higher level supervisor and vice versa.



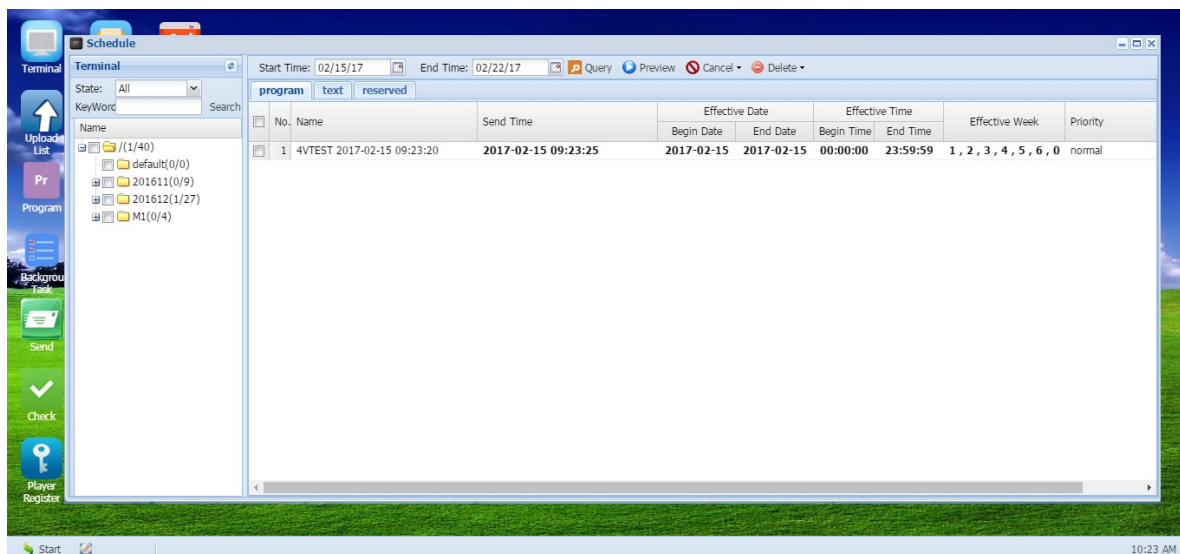
10.4 Scheduling

Scheduling : Provide flexible scheduling of broadcast program playback patterns, such as 24/7 playback, playback through appointments made prior, playback of different programs according to time-slot planning of scheduling list for mornings, mid-days and evenings. One scheduling list can offer up to 30-day scheduling for the digital signage machine, per the diagram shown below :



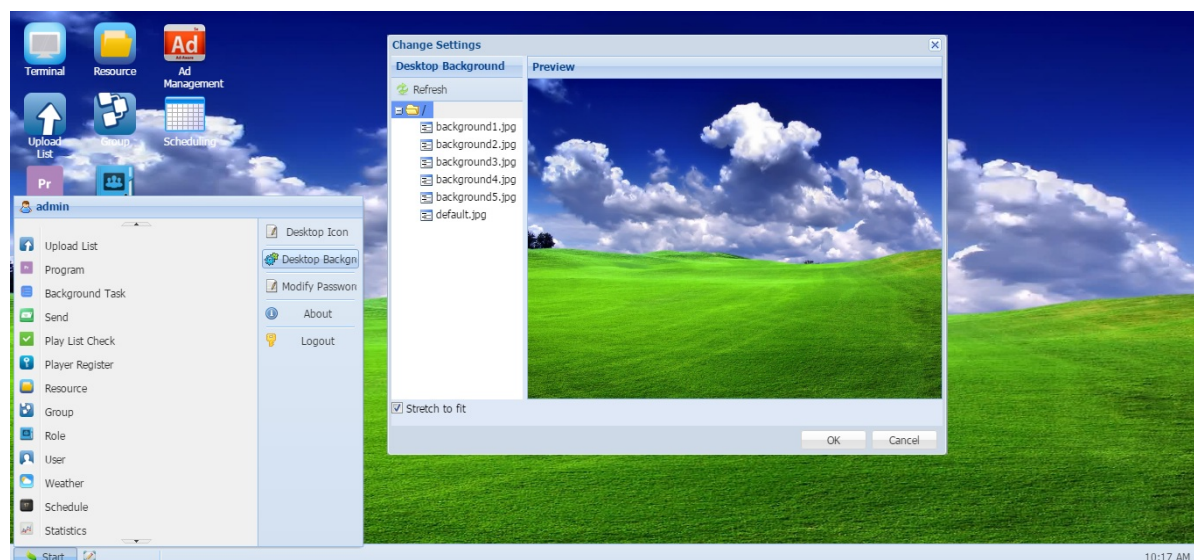
10.5 Schedule

Managing: Mainly for operations such as enquiries and cancellation for broadcasted programs



10.6 Desktop Background

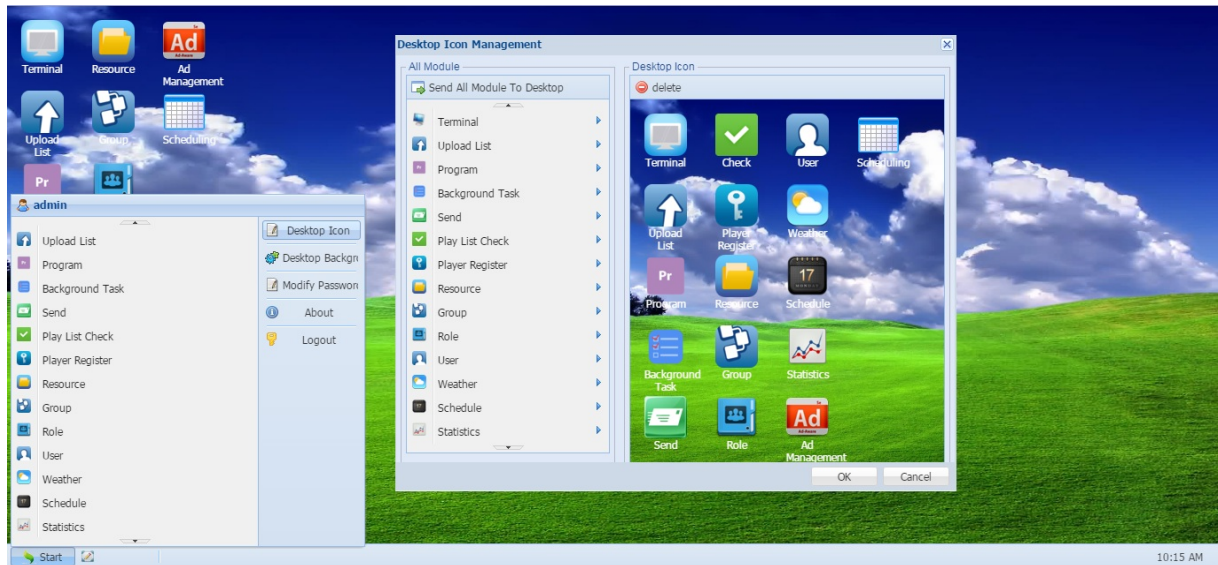
The desktop background of CMS Advertising Content Management system can be replaced at will by actions of the users alone.



10.7 Desktop Shortcut

The shortcut of CMS Advertising Content Management system can be added to the

Desktop at will by actions of the users alone.



1 1.CMS Functional comparison table

CMS Advertising Content Management System provides 3 types of software, namely, Standard Version, CMS02 Interactive Version, and CMS03 Flagship Version. For a thorough functional comparison table amongst the different software versions please see tables shown below for details

	CMS01	CMS02	CMS03
Picture, Video, Audio, Text, Date, Time, Week, Weaher, Web, Container, RSS	●	●	●
Interactive Touch	X	●	●
Ad Area, Streaming, Countdown	X	X	●
Ad Management	X	X	●
Program Editor	●	●	●
Terminal Management	●	●	●
Resource	●	●	●
Send / Clearance check	●	●	●
Scheduling / Statistics	●	●	●
Clearance Management	●	●	●

1 2. Requirements of computer environment

Hardware Requirements :

CPU: Intel 1037u 1.8GHz / Memory:2G DDR3 / Hard-Disk Space:500G or above

Operating System :

- Microsoft® Windows® XP (32bit upgrade to Service Pack 3) Series Versions
- Microsoft® Windows Vista/7® Series Version (32 bit and 64 bit)
- Microsoft® Windows 8/8.1® Series Version (32 bit and 64 bit)
- Microsoft® Windows 10/10.1® Series Version (32 bit and 64 bit)
- Microsoft® Windows Server 2000/2003/2008 Server® 系列版本 (32 位元與 64 位元)

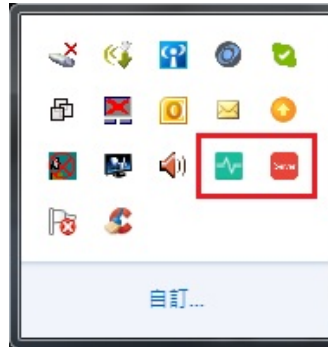
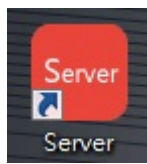
Internet Connection :

- Need to have long-term internet connection, while providing fixed IP Address for server log-in, and ensuring seamless connection both ways.
- Need to provide sufficient broadband bandwidth for modified media files for its transmission
- When placed in external network, need to provide actual IP or NAT settings.
- When lost connection with digital signage, it will be impossible to execute functions such as, synchronized delivery, diary feedback and remote monitoring, etc.

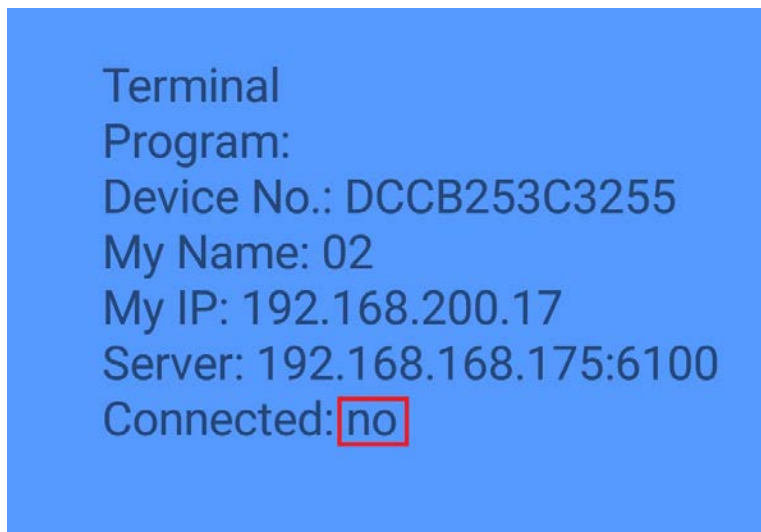
1 3. Troubleshooting

1.3.1 Q: Unable to log-in Content Management System via Browser

A: Please first check your PC to see whether SERVER program is indeed activated, and we suggest to use “CHROME” browser to log in.



1.3.2 Q: Digital Signage cannot be connected to SERVER



A: 1. Make sure SERVER program has been activated

2. Please check whether Digital Signage has been connected to LAN or WLAN, and in the same network subnet with SERVER

If digital signage is located in external network, please confirm the server’ s external IP Address being correct and have 6101 、6100 PORT opened.

2. De-activate built-in Windows firewall.

1.3.3 Q: Unsuccessful importing of program, via USB flash drive

A: Please firstly confirm whether network connection is functioning normally, program file is stored correctly under the root directory of the USB disk

Note: The USB disk can only store 1 program file

1 4. Product Warranty

Note :

Management Guideline for lower-power electromagnetic machinery:

Article 1 2 Without permission, any company, firm or user shall not alter the frequency, increase the power, or change the characteristic and functions of the original design of the certified lower power frequency electric machinery.

Article 1 4 The application of lower power frequency electric machineries shall not affect the navigation safety nor interfere a legal communication, if an interference is found, the service will be suspended until improvement is made and the interference no longer exists.

Warnings :

- Please do not allow contact with dampness or water sources, which may lead to electric shock or electric circuit damage.
- Please do not remove product external casing on your own, so as to avoid electric shock, or to cause internal damage to the product.
- This product is compliant to NCC regulation on low-power RF electrical products.
- For the detail of scope of electricity, please see power source labelling guide

55" Interactive Kiosk

HD-550Z1A01 & HD-A550ZR1A01-WW

Input Voltage : AC 100V 240V 50/60Hz

Input Current : 3.5A

Looking at a screen for too long may affect vision. After using a half hour, should take a 10 minutes full break. Children under the age of 2 are strictly prohibited, children at age 2 and above shouldn't staring at monitor more than 1 hour.

「Warning : This is Class A Product. In domestic environment this product may cause radio interference in which case the user may be required to take adequate measures」

設備名稱：55吋互動式廣告機，型號（型式）： HD-550Z1A01,HD-A550ZR1A01-WW Equipment name Type designation (Type)						
單元 Unit	限用物質及其化學符號 Restricted substances and its chemical symbols					
	鉛Lead (Pb)	汞Mercury (Hg)	鎘Cadmium (Cd)	六價鉻 Hexavalent chromium (Cr ⁺⁶)	多溴聯苯 Polybrominated biphenyls (PBB)	多溴二苯醚 Polybrominated diphenyl ethers (PBDE)
面板	○	○	○	○	○	○
外殼	○	○	○	○	○	○
電路板	○	○	○	○	○	○
線材	○	○	○	○	○	○
電源供應器	○	○	○	○	○	○

備考1. “超出0.1 wt %”及“超出0.01 wt %”係指限用物質之百分比含量超出百分比含量基準值。
Note 1 : “Exceeding 0.1 wt %” and “exceeding 0.01 wt %” indicate that the percentage content of the restricted substance exceeds the reference percentage value of presence condition.

備考2. “○”係指該項限用物質之百分比含量未超出百分比含量基準值。
Note 2 : “○” indicates that the percentage content of the restricted substance does not exceed the percentage of reference value of presence.

備考3. “-”係指該項限用物質為排除項目。
Note 3 : The “-” indicates that the restricted substance corresponds to the exemption.

FCC Statement

This equipment has been tested and found to comply with the limits for a Class B digital device, pursuant to Part 15 of the FCC Rules. These limits are designed to provide reasonable protection against harmful interference in a residential installation. This equipment generates, uses and can radiate radio frequency energy and, if not installed and used in accordance with the instructions, may cause harmful interference to radio communications. However, there is no guarantee that interference will not occur in a particular installation. If this equipment does cause harmful interference to radio or television reception, which can be determined by turning the equipment off and on, the user is encouraged to try to correct the interference by one of the following measures:

- Reorient or relocate the receiving antenna.
- Increase the separation between the equipment and receiver.
- Connect the equipment into an outlet on a circuit different from that to which the receiver is connected.
- Consult the dealer or an experienced radio/TV technician for help.

FCC RF Radiation Exposure Statement

1. The equipment complies with RF exposure limits set forth for an uncontrolled environment. The antenna(s) used for this transmitter must not be co-located or operating in conjunction with any other antenna or transmitter.
2. This equipment complies with FCC RF radiation exposure limits set forth for an uncontrolled environment.
3. This equipment should be installed and operated with a minimum distance of 20 centimeters between the radiator and your body.

FCC Caution: Any changes or modifications not expressly approved by the party responsible for compliance could void the user's authority to operate this equipment.

This device complies with Part 15 of the FCC Rules. Operation is subject to the following two conditions:

- (1) this device may not cause harmful interference and
- (2) this device must accept any interference received, including interference that may cause undesired operation

LIDEA®

Lithium Cell Battery

Model: CR1220

Voltage: 3.0Vdc

Battery Capacity: 40mAh

Made in China

MD: 04 / 2016

Warning

1. Insert the battery correctly, do not connect the battery in reverse relation to the positive (+) and negative (-) terminals in the charger or equipment to avoid short-circuiting
2. The battery has a predetermined polarity. If the battery will not connect well to the charger or equipment, do not try to connect the battery forcefully. Check the polarity first. If the battery is connected in reverse, it will be charged in reverse and may cause leakage, heat generation, explosion or fire due to an abnormal chemical reaction.
3. Should not mix old and new batteries. Do not mix the battery with different brand, level or type within a device, that may cause leakage.
4. Do not heat, re-use or recharge the battery. Otherwise the electrolyte may boil and resin parts may melt, causing leakage, explosion or fire.
5. Never disassemble or deform the battery, it should be hermetically sealed. Do not put the battery into a fire. Otherwise, the electrolyte may burn or cause an explosion.
6. Keep it away from children, swallowing a battery can be harmful
7. Should avoid using expired batteries, due to they tend to leak.



LIDEA® 深圳市力电电池有限公司
SHENZHEN LIDEA BATTERY CO., LTD.