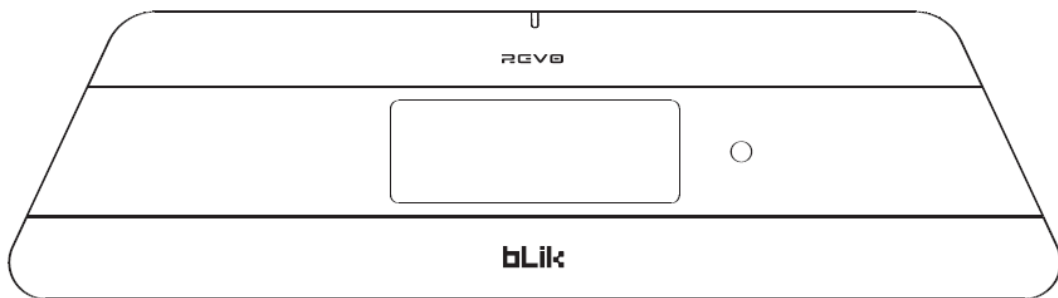


blik

Wi-Fi



## ■ Operating Guide

# Contents

<b>Safety Information</b>	<b>3</b>	Setting BLIK's Clock	<b>10</b>
Benefits of Internet Radio	5	Setting An Alarm	<b>10</b>
BLIK Overview	5	Sleep Function	11
Warranty	5	<b>FM Operation</b>	<b>12</b>
Warranty Registration	5	<b>M-Port</b>	<b>12</b>
<b>Before Getting Started</b>	<b>5</b>	<b>Main Menu</b>	<b>12</b>
<b>Controls and Connections</b>	<b>6</b>	SW Version and Radio ID	<b>12</b>
<b>Remote Control</b>	<b>6</b>	Firmware Updates	<b>12</b>
<b>Powering BLIK</b>	<b>6</b>	Factory Reset	<b>12</b>
<b>Remote Control Operation</b>	<b>6</b>	Time Setup	<b>12</b>
<b>Reciva Radio Portal</b>	<b>6</b>	Register	<b>12</b>
<b>Connecting To Your Network</b>	<b>7</b>	<b>Media Player Operation</b>	<b>13</b>
<b>Choosing a Station</b>	<b>8</b>	Step1: Set up Media sharing in Windows Media player	<b>13</b>
Station Updates	8	Step 2: Play Music on the Internet Radio	<b>14</b>
<b>General Operation</b>	<b>9</b>	Set Up Media Sharing in MAC OS	<b>14</b>
<b>Resetting BLIK Radiostation</b>	<b>9</b>	<b>Troubleshooting</b>	<b>15</b>
<b>Alarm + Clock Functions</b>	<b>10</b>		

# Preface

## Copyright and Acknowledgements

Copyright © 2007 Revo Technologies Ltd.  
All rights reserved.

Revo Technologies Ltd  
The Inox Building  
Caldwellside  
Lanark  
Scotland  
United Kingdom

ML11 7SR  
Tel. 01555 666 161  
Int. Tel. +44 1555 666 161  
Fax. 01555 66 33 44  
Int. Fax. +44 1555 66 33 44  
Email. [enquiries@revo.co.uk](mailto:enquiries@revo.co.uk)  
Website: [www.revo.co.uk](http://www.revo.co.uk)

The information in this guide is believed to be correct at the time of publication.

However, our policy is one of continuous development and so the information is subject to change without notice.

Revo, BLIK and M-Port are trademarks or registered trademarks of Revo Technologies Limited.

iPod® is a registered trademark of Apple Computer, Inc.

## Safety Warnings

Do not operate this radio near water.  
Avoid small objects and liquids from getting into this product.  
Do not remove screws or casing parts.  
Use only the power supply unit supplied.  
EEC: This product has been designed and type-tested to comply with EU requirements and carries a CE mark.



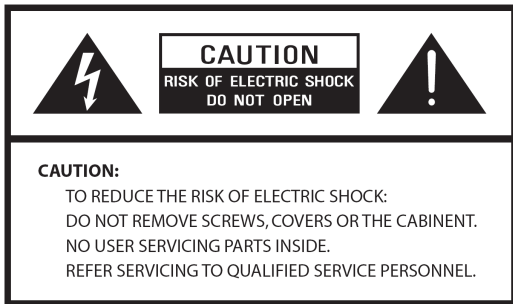
### Technical Support

Should you encounter any difficulties with the operation of your Revo BLIK Wi-Fi, or should you suspect that it may be faulty in some way, please call our technical support department on the number below:

**01555 666 161**

Alternatively, email [support@revo.co.uk](mailto:support@revo.co.uk) or visit the troubleshooting section of our website at: [www.revo.co.uk/support](http://www.revo.co.uk/support)

# Safety Information



The lightning flash with arrowhead symbol within an equilateral triangle is intended to alert the user to the presence of uninsulated "dangerous voltage" within the product's enclosure that may be of sufficient magnitude to constitute a risk of electric shock to persons.



The exclamation point within an equilateral triangle is intended to alert the user to the presence of important operating and maintenance (servicing) instructions in the literature accompanying the appliance.

**WARNING: TO REDUCE THE RISK OF FIRE OR ELECTRIC SHOCK, DO NOT EXPOSE THIS APPLIANCE TO RAIN OR MOISTURE.**

## IMPORTANT SAFETY INSTRUCTIONS

To reduce the risk of electrical shock, fire, etc.:

1. Read these instructions.
2. Keep these Instructions.
3. Heed all Warnings.
4. Follow all instructions.
5. Do not use this apparatus near water.
6. Clean only with dry cloth. For stubborn stains, use a soft cloth dampened with a weak solution of mild detergent and water. Dry the apparatus immediately afterwards with a clean cloth. Do not use abrasive clothes, thinners, alcohol, or other chemical solvents, because they may damage the finish or remove the panel lettering.
7. Do not block any ventilation openings. The ventilation shall not be impeded by covering the ventilation openings with items, such as newspapers, table clothes, curtains, etc.

8. Do not install near any heat source such as radiators, heat registers, stoves, or other apparatus (including amplifiers) that produce heat.
9. Do not defeat the safety purpose of the polarized or grounding - type plug. A polarized plug has two blades with one wider than the other. A grounding type plug has two blades and a third grounding prong. The wide blade or the third prong are provided for your safety. If the provided plug does not fit into your outlet, consult an electrician for replacement of the obsolete outlet.
10. Protect the power cord from being walked on or pinched particularly at plugs, convenience receptacles, and the point where they exit from the apparatus. If the power cord is damaged, it must be repaired by a qualified repairer.
11. Only use attachments/accessories specified by the manufacturer.
12. Use only with the cart, stand, tripod, bracket or table specified by the manufacturer, or sold with the apparatus. When a cart is used, use caution when moving the cart/apparatus combination to avoid injury from tip-over.



PORTABLE CART WARNING

13. Unplug this apparatus during lightning storms or when unused for long periods of time.
14. Refer all servicing to qualified service personnel. Servicing is required when the apparatus has been damaged in any way, such as power-supply cord or plug is damaged, liquid has been spilled or objects have fallen into the apparatus, the apparatus has been exposed to rain or moisture, does not operate normally, or has been dropped.
15. The apparatus shall not be exposed to dripping or splashing and no objects filled with liquids, such as vases, shall be placed on the apparatus.
16. The mains plug or an appliance coupler is used as the disconnect device, the disconnect device shall remain readily operable.
17. Please read Rating Labels at the bottom of the Sender and Receiver for power input and other safety information.

## **FCC RF Radiation Exposure Statement:**

This equipment complies with FCC radiation exposure limits set forth for an uncontrolled environment. The antenna(s) used for this transmitter must be installed to provide a separation distance of at least 20 cm from all persons and must not be co-located or operating in conjunction with any other antenna or transmitter. End users must follow the specific operating instructions for satisfying RF exposure compliance.

## **FCC**

This device complies with Part 15 of the FCC Rules Operation that is subject to following two conditions:

- (1) This device may not cause harmful interference and,
- (2) This device must accept any interference received, including interference that may cause undesired operation.

**Warning: Changes or modifications to this unit not expressly approved by the party responsible for compliance could void the user authority to operate the equipment.**

# Welcome to BLIK Radiostation

Thank you for buying our BLIK WI FI internet radio, we feel sure that it will provide you with years of enjoyment and reliable service.

This guide has been designed to quickly get you up-and-running and listening to internet radio, offer guidance on the more complex features of this product and provide information on safety, warranty and registration.

## Benefits of Internet Radio

- Access to 7,000+ internet radio stations
- Search by genre or country
- Access 'Listen Again' services
- Station list updates automatically
- No subscription charges

## BLIK Radiostation Overview

BLIK Radiostation is the go anywhere internet radio, acting as a portal to thousands of radio stations around the world.

BLIK Radiostation provides high quality digital audio in a splash proof casing, with the convenience of internal battery power.

BLIK Radiostation can also be used as a high quality speaker system for your iPod™ (or other MP3 player or external sound source).

Simply connect your device to BLIK Radiostation's M-Port™ using the audio lead supplied.

## Warranty

Revo Technologies Ltd warrants to the purchaser that this product will be free from parts and manufacturing defects in the course of normal use for a period of one year from the date of purchase.

This warranty does not apply in cases of accidental damage, where the case has been removed, wear and tear, negligence, modification or inappropriate use.

Should you encounter problems with this product, please contact your supplier or alternatively see page 2 of this guide for technical support contact details.

### Warranty Registration

It is a warranty condition that you register your purchase by either completing the warranty card enclosed with your radio or alternatively registering online at

[www.revo.co.uk/register](http://www.revo.co.uk/register)

# Before Getting Started

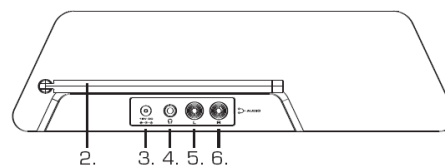
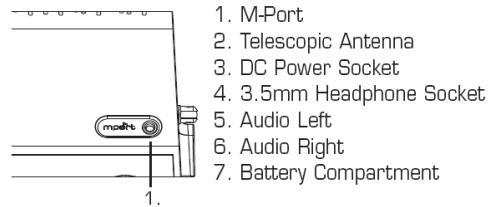
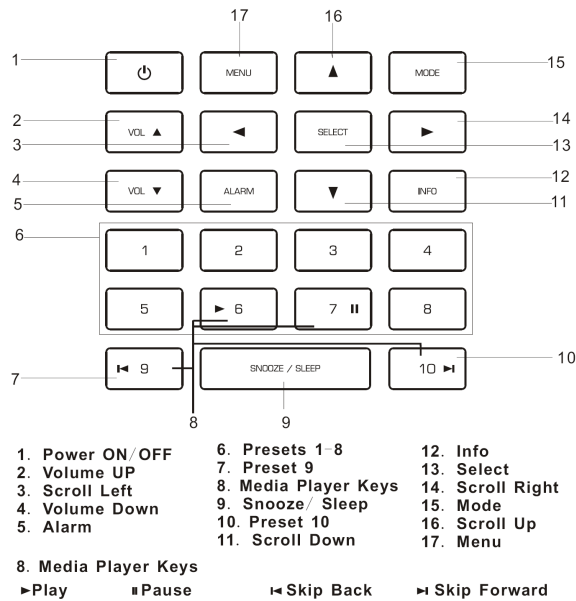
In order to use your BLIK Radiostation internet radio you will require a wireless (Radiostation) broadband Internet connection.

If your wireless network is configured to use Wired Equivalent Privacy (WEP) or Radiostation Protected Access (WPA) data encryption, you need to know the WEP or WPA code (Web Key) in order allow BLIK Radiostation to communicate with the network.

BLIK Radiostation should be able to operate anywhere within 35 metres of the wireless base station – depending on the operating environment and the specification of your wireless base station.

Please ensure that your wireless network is powered-up and connected to your broadband Internet connection.

# Controls and Connectors



- 1. Power ON / OFF
  - 2. Volume UP
  - 3. Scroll Left
  - 4. Volume Down
  - 5. Alarm
  - 6. Presets 1-8
  - 7. Preset 9
  - 8. Media Player Keys
  - 9. Snooze / Sleep
  - 10. Preset 10
  - 11. Scroll Down
  - 12. Info
  - 13. Select
  - 14. Scroll Right
  - 15. Mode
  - 16. Scroll Up
  - 17. Menu
8. Media Player Keys
- ▶ Play
  - ⏸ Pause
  - ⏮ Skip Back
  - ⏭ Skip Forward

# Remote Control



- Media Player Controls
- ⏸ Pause
  - ▶ Play
  - ⏮ Skip Back
  - ⏭ Skip Forward

# Powering BLIK Radiostation

Your BLIK Radiostation radio can be powered from the mains using the power adaptor supplied, or from its internal battery pack.

To power from the mains, insert the power adaptor plug into the DC power socket on the rear of BLIK Radiostation. Pressing the button will switch BLIK Radiostation on.






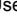
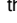



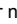


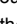
Only use the power adaptor supplied. Replacements can be purchased from our website [www.revo.co.uk](http://www.revo.co.uk), or alternatively call us on 01555 666 161.

# Reciva Radio Portal

The station list used by BLIK Radiostation is compiled and managed by Reciva Limited, they also provide the internet radio technology used in BLIK Radiostation.

BLIK Radiostation users are able to access additional internet radio services by visiting the Reciva Radio Portal at - [www.reciva.com](http://www.reciva.com) and registering their radio.

# Connecting To Your Network

- Extend the antenna on the rear of your radio. Press the  button to power-up BLIK Radiostation.
- After a few seconds this message will change to a welcome message.
- For initial use, Press   button to scroll up and down each mode or simply press **MODE** button to enter.
- Press   button to select INTERNET RADIO, and press the **SELECT** button. Then the display will show a list of region for your choice.
- In some cases BLIK Radiostation may find more than one network. Use the   buttons to see the names of each one – and press the **SELECT** button when the name of your own network is displayed.
- If your network is not configured to request a password (WEP/WPA), BLIK will connect to the network and display:
- If a WEP/WPA key (password) is required, BLIK will display the following:
- After a few seconds, BLIK will ask you to input the WEP/WPA code and will display the password entry screen as follows:
- Use the   buttons to cycle back and forward through the alpha-numeric character list. Press the **SELECT** button to select a character.  
Please note: WEP/WPA pass codes are case-sensitive.
- If you make a mistake while entering your password, select  icon to delete a character.
- Select   for last or next line
- Select  icon for return.
- After selecting the final character of your password, scroll to the  icon and press the **SELECT** button to enter your code. BLIK Radiostation should now successfully connect to your network.
- BLIK Radiostation will automatically remember the WEP/WPA code for your network, and other networks you have used previously. You will not need to re-enter these codes in the future.

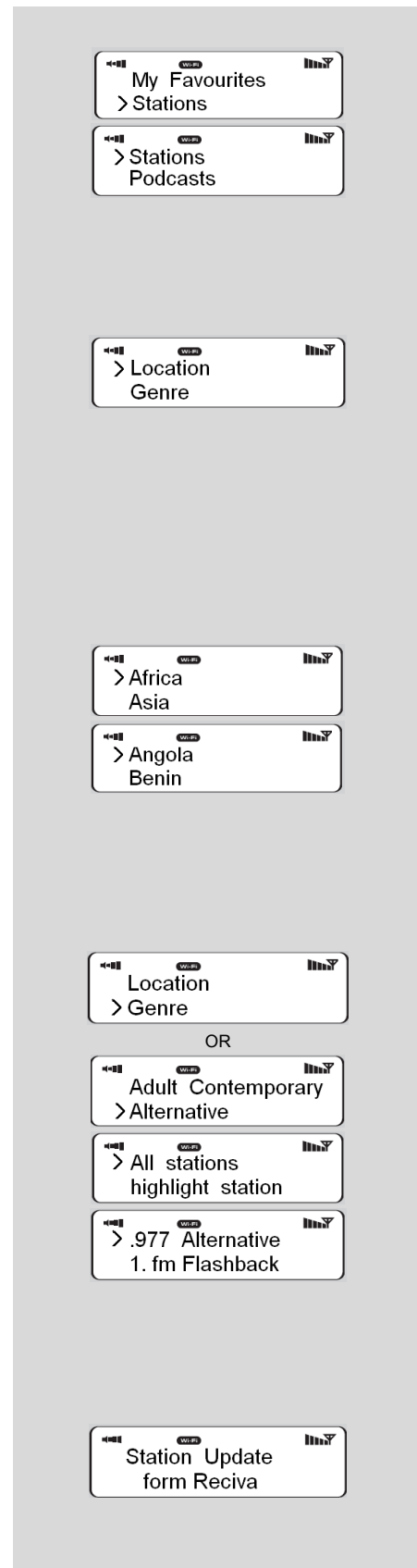


# Choosing a station

- When BLIK Radiostation has connected to your wireless network, you are now ready to select a station.
- **Please Note:** You can move back to the previous screen at any time by pressing the ◀ button.
- You will now be given five option of selecting a station by **Location**, **Genre**, **Search Stations**, **Popular stations** and **New stations**.  
  
Use the ▲ ▼ buttons to pick your search method, and then press **SELECT**.
- Choosing **location** will give you an alphabetical list of countries broadcasting internet radio. Press the ▲ ▼ buttons to scroll until your desired location is appeared then Press the **SELECT**. For example:
  - You will then be given the choice of listing all station types in this country, or listing them by genre eg. Pop, Dance... etc.
  - Use the ▲ ▼ buttons and press **SELECT** to set your selection, BLIK Radiostation will now download the station list for your choice.
  - You can now scroll through the station list and make your selection by pressing the **SELECT** button
- Choosing **Genre** will give you an alphabetical list of station types. the ▲ ▼ keys to view these.
- Press the **SELECT** button to select your desired genre.
- You will now be given the choice of viewing all stations in this genre, or further sorting them by location (country)
- Now select your chosen station from the alphabetical list.

## Station Updates

Occasionally, BLIK-Radiostation will tell you that it is receiving an updated station list. It does this automatically and periodically, ensuring that BLIK Radiostation always has the latest station directory on-board





# General Operation

## Changing Volume

To change BLIK Radiostation's volume, press the **VOL ▲** and **VOL ▼** button, the numerical volume level will be displayed on the BLIK' screen, and BLIK Radiostation will remember its previous volume level after shutdown and power-up.

## Internet Radio Presets

BLIK Radiostation can store ten presets by using the preset keys on BLIK itself, or via the remote control. To store the current station, press and hold one of the preset keys (on BLIK itself or the remote control). To select a stored station, simply press the corresponding preset key.

## Returning To Main Menu

Simply press **MENU** button. Alternatively, Press **MODE** choice the different mode, except MPort Mode', and then You can move back to BLIK Radiostation's top-line main menu at any time by pressing the **◀** button and working back through previous menu.

## Requesting a Station

If you want to listen to a radio station that is currently not listed in BLIK Radiostation's station list, you can visit the Reciva website at <http://www.reciva.com/> and make a request to add the station to the list.

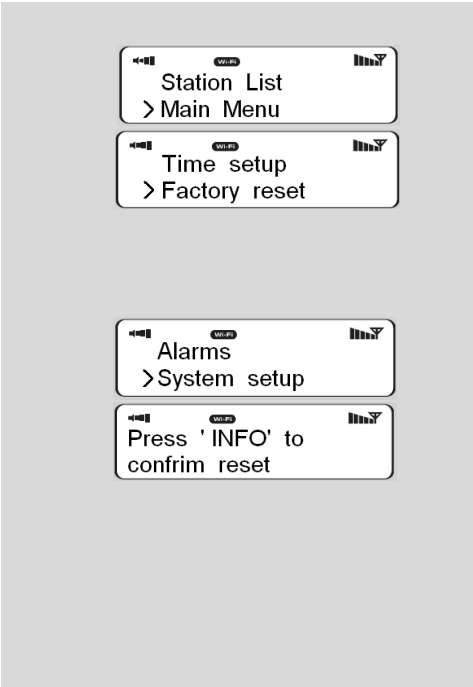
# Resetting BLIK Radiostation

Performing a factory reset will completely reset BLIK's memory, clearing all WEP/WPA codes and user settings. This will effectively return BLIK to its default factory settings.

'Factory Reset' can be activated from BLIK's 'Main Menu' / 'System Setup' menu.

Then the display will prompt you "Press 'INFO' to confirm reset",

**Note:** If you do not wish to reset the radio, wait a few seconds without pressing any buttons and the radio will revert to its previous operating condition.



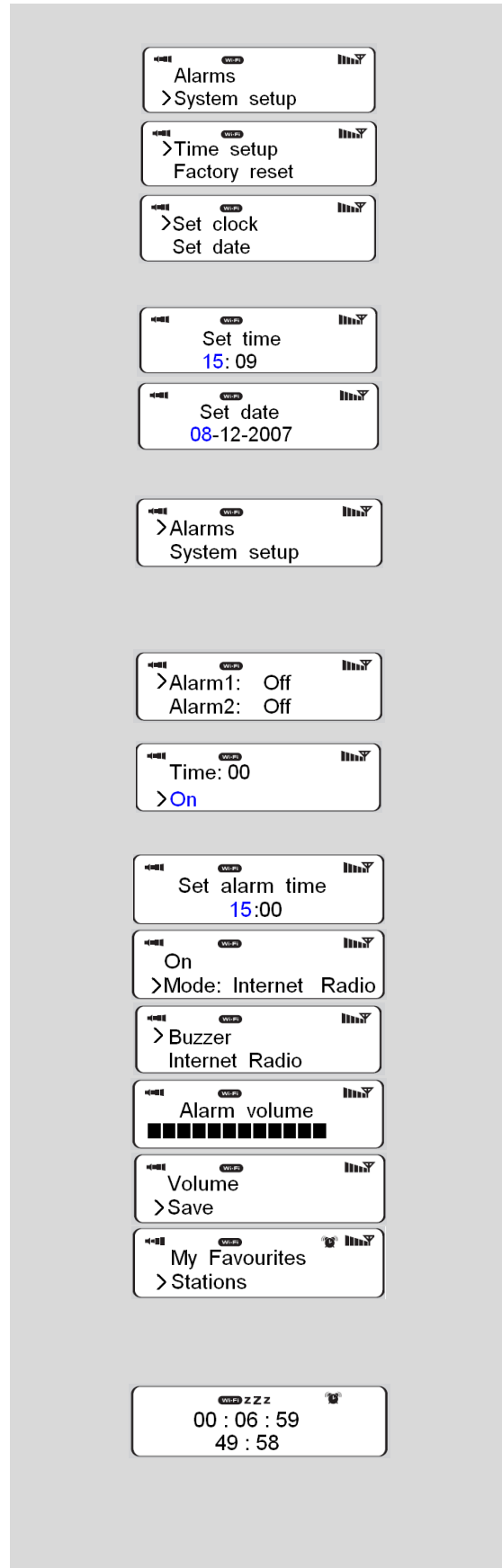
# Alarm + Clock functions (IN all modes)

## Setting BLIK's Clock

- Turn BLIK on and press **◀** button to enter MAIN MENU, Press **▲ ▼** buttons to scroll up and down until SYSTEM SETUP is appeared, then press **SELECT** to confirm.
- After enter time setup mode, Press **▲ ▼** buttons to scroll up and down. there are also both auto to update and set 12/24 hour is available for you.
- BLIK will now ask you to set the time. Press **SELECT** and use the **▲ ▼** buttons to change the hour, and then press **SELECT** to set. BLIK will now ask you to set the minutes in the same way.
- Also, set the day and press **SELECT** to confirm.

## Setting An Alarm

- Press the button to switch on your radio, then press the **Alarm** button. Or enter MAIN MENU subdirectory to set it.
- BLIK will allow you to store four different alarm programs in its memory. Select the alarm program you'd like to use - either Alarm 1 or Alarm 2 etc. by using the **▲ ▼** buttons, then pressing **SELECT**.
- BLIK will now give the option of turning the four alarms on or off. Press **SELECT** and use **▲▼** to choose OFF or ON - then press **SELECT**. For this example, turn Alarm 1 ON.
- BLIK will now ask you to set the alarm time. Press **SELECT** and use the **▲ ▼** buttons to change the hour, then press **SELECT** to set. In the same way to set the minutes.
- BLIK will ask what type of wake-up alarm you would like - Internet Radio (IR), FM, Buzzer or Last listened. Use the **▲ ▼** buttons to change mode, then press **SELECT** to confirm.
- BLIK allows you to set the volume level by press the **VOL ▲** or **VOL ▼** buttons to your desire level, then press **SELECT** to confirm.
- Finally, Press **▲ ▼** buttons to scroll up and down to SAVE, press **SELECT**, the alarm icon will appear on the top line of BLIK's display at all times.
- To halt an alarm, press any button on BLIK's keypad. Alternatively, tap the **SNOOZE/SLEEP** button to mute the alarm for a pre-defined period, anything between 5 – 60 minutes. The default setting is 5 minutes.
- When BLIK is in Snooze mode, the Snooze icon (zzZzz) will be displayed on-screen.



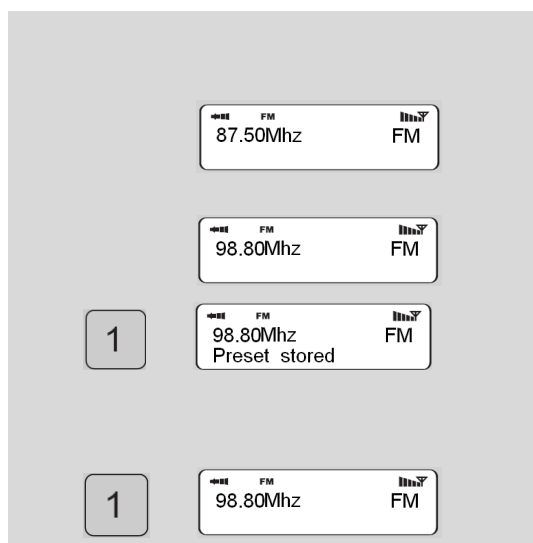
## Sleep Function

- To program BLIK to turn off after a pre-defined period of time, press the **SNOOZE/SLEEP** button. Use the **▲ ▼** buttons to define the Sleep period which between 15 – 90 minutes and press **SELECT**.
- The Sleep icon will appear on the LCD screen, press the **SNOOZE/SLEEP** button once more, the bottom line will show how time will be expired.
- BLIK will now automatically put itself into standby mode after the time has elapsed.



## FM Operation Mode

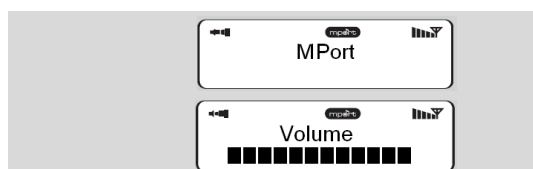
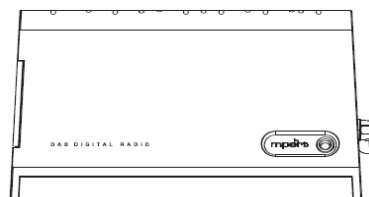
- To listen to FM radio stations switch BLIK on and press the **MODE** button.
  - If this is the first time BLIK has been in FM mode, it will start at the beginning of the FM frequency range. Otherwise, the last frequency or FM station will be displayed.
  - To scan through the FM frequency range, use the ▲ ▼ buttons. To 'SEEK' the next active station, press and hold ▲ ▼ buttons.
- FM Station Presets**
- BLIK can store ten FM presets, accessed via the keypad or remote control.
  - To store the current frequency, press and hold one of the preset buttons.
  - To select a stored FM station, simply press the corresponding preset key.



## M-Port™

### Using M-Port

- Revo's M-Port allows for quick and easy connection of an iPod® (or other MP3 player or external sound sources).
- Using the connection lead supplied, BLIK™ is transformed into a high quality digital audio speaker system.
- Connect one end of the supplied audio lead to the headphone (or auxiliary out) socket of your source device, then connect the other end to the M-Port on the side of BLIK.
- BLIK's LCD screen will now display the words "MPort".
- You should adjust the output volume level on both the source device and on BLIK itself to gain optimal volume levels.



## Main Menu

Press the ▲ ▼ buttons to cycle through the available list. Press the **SELECT** to select the chosen station.

Enter this menu, enables you to set Internet Radio, Music Player, FM, M-Port, Sleep, Alarms, system setup and Info ect.

### SW Version and Radio ID

After enter INFO subdirectory, This will display such information as your device serial number and hardware/software version numbers. This information may be requested when dealing with technical support issues.

### Firmware Update

For activation this function, simply enter SYSTEM SETUP subdirectory is OK, Use this to check whether there are any firmware updates available for your BLIK Radiostation radio. BLIK will check, and prompt you if there is. You can then make the decision

whether to start a firmware download or not. A firmware update can take several minutes, do not switch BLIK Radiostation off until this procedure has been completed. Doing so may cause permanently damage.

### Factory Reset

See page 7 for details.

### Time setup

See page 8 for details.

### Register

This will display a key code that can be used to register your radio on the Reciva website customer portal: <http://www.reciva.com/>

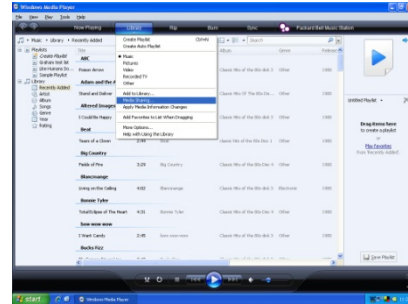
# Media Player Operation

## Step 1: Set Up Media Sharing in Windows Media Player 11

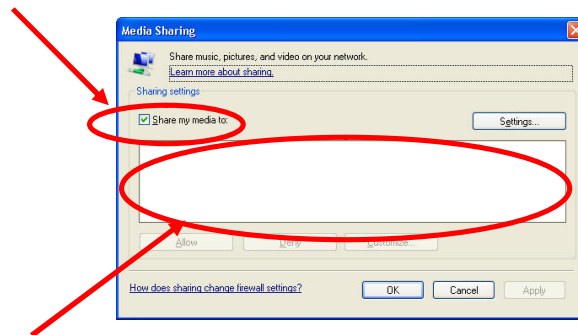
After you download and install Windows Media Player 11 for Windows XP and connect your radio to the network, you need to set up media sharing so that you can share music with your radio.

The following steps describe how to set up media sharing in Windows Media Player 11

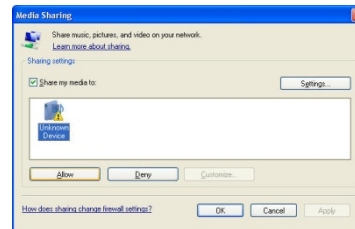
1. In Windows Media Player 11, click the small arrow below the Library tab, and then click Media Sharing.



2. In the Media Sharing dialogue box, select the Share my media check box



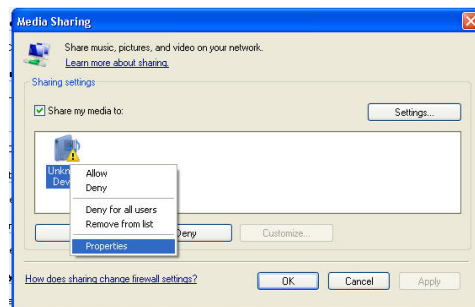
3. Check the "share my media to" box. In the list, click your Radio \*, click Allow, the selected device will now show a green tick and then click OK.



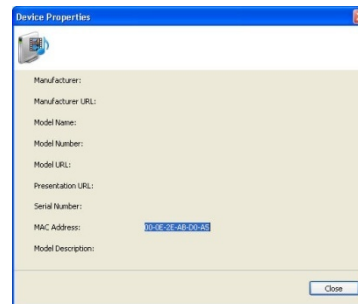
If your device does not appear in the list of devices, perform the following steps;

From the "Media Player" menu of your internet radio select "UPNP Servers"

A list of available computers will appear. Select the required computer.



Your device will now appear in the list. If you want to check that this is your radio, right click on the device and select "Properties": your radio's MAC address will be shown.



## Step 2: Play Music on the Internet Radio.

After installing and configuring your radio and Windows Media Player 11, you are now ready to play music via a wireless connection.

The following steps describe how to play music with your radio.

Select "UPNP Servers" in the "Media Player" menu.

Select the computer you wish to play the music files from.

Use the controls to browse according to the following criteria: All Music, Genre, All Artists, Contributing Artists, Album Artists, Composers, Albums, Playlists, Folders or Star Ratings and then press the SELECT button to confirm.

Select the tracks you want to play, then press the Select button. Enjoy the music!

## Set Up Media Sharing in MAC OS

Using the radio with a MAC will require Windows File Sharing. MAC OS 9 and earlier versions of the OS will need extra software to use Windows File Sharing, but MAC OS X 10.2 and later versions have Windows File Sharing built into the OS.

### Set up Windows File Sharing on a MAC

- From the 'Dock', click on 'System Preferences'. From the 'System Preferences' window, under the 'Internet & Network' section, click on 'Sharing'.
- From the 'Sharing' window, do the following:
  - Under the 'Services' section, enable 'Personal File Sharing' and 'Windows Sharing'. In order to do this, tick the corresponding boxes or click on 'Start' for each of these services.
  - Under the 'Firewall' section, switch off the firewall.
  - Under the 'Internet' section, switch off 'Internet Sharing'.

### Accounts Setup

- From the 'System Preferences'

window, in the 'System' section, click on 'Accounts'. Select an account and remember its 'Short Name' and password. This will be used for the radio to connect to the MAC.

### Directory Setup

- From the 'Dock', click on 'Finder'. From 'Finder', click on 'Applications then 'Utilities'. Click on 'More Info' for 'Directory Access' and ensure that the 'Read/Write' option is enabled. Double-click on 'Directory Access' and enable the following:
  - AppleTalk
  - LDAPv3
  - SLP
  - SMB/CIFS
- For 'SMB/CIFS', click on 'Configure' and select an appropriate workgroup.
- Copy and paste the mp3 files to 'Documents' in the 'Finder' window.
- Turn on 'AirPort' (wireless sharing).
- Wait for a few minutes.

In the 'Media Player' > 'Windows Shares' menu, enter the MAC account's short name and password. The radio should then be able to connect to the MAC

# Troubleshooting

If you are experiencing any problems with your BLIK Radiostation internet radio please read the following 'troubleshooting' guide.

Alternatively you can visit the HELP section of the Reciva website ([www.reciva.com](http://www.reciva.com)) the support section of the Revo website ([www.revo.co.uk](http://www.revo.co.uk)) or call our technical support staff on 01555 66 61 61.

If you have trouble connecting BLIK Radiostation to your wireless network, these steps may help to resolve the problem:

1. Confirm that a Radiostation connected PC can access the Internet (i.e. can browse the web) using the same network.
2. Check that a DHCP server is available, or that you have configured a static IP address on the radio. You can configure a static IP address on the radio using the menu item 'Configure -> Network Config -> Edit Config', and then select 'No' for 'Auto (DHCP)'.
3. Check that your network's firewall is not blocking any outgoing ports. As a minimum, the BLIK needs access to UDP and TCP ports 80, 554, 1755, 5000 and 7070.
4. Check your access point does not restrict connections to particular MAC addresses. You can view the radio's MAC address using the menu item 'Configure -> Network Config -> View Config -> MAC address'.

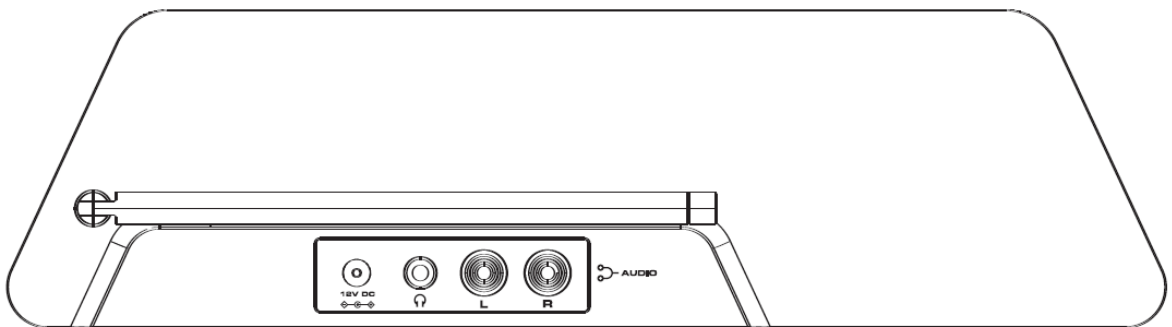
5. If you have an encrypted network, check that you have entered the correct key or pass phrase into the radio. Remember that text-format keys are case sensitive. If, when attempting to connect to an encrypted network, your radio displays: 'Wireless error' followed by a 5-digit number, then please ensure that you enter the correct pass phrase for the network. If the problem persists, then you may need to consult your network configuration.

If BLIK Radiostation can connect to the network successfully, but is unable to play particular stations, it may be due to one of the following causes:

1. The station is not broadcasting at this time of the day (remember it may be located in a different time zone).
2. The station has reached the maximum allowed number of simultaneous listeners.
3. The station is not broadcasting anymore.
4. The link on the radio is out of date.
5. The Internet connection between the server (often located in a different country) and you is slow. Try using a PC to play back the stream via the broadcaster's web site. If you can play back the station with a PC, but not via BLIK Radiostation - use the form at <http://www.reciva.com/> to notify Reciva of the problem - they can change the station data that is used by the radio.

REVO®

*Radio  
is our  
Religion*



Revo Technologies Ltd The Inox Building Caldwellside Lanark Scotland United Kingdom ML11 7SR

Telephone Support 01555 666 161

Online Support [www.revo.co.uk/support](http://www.revo.co.uk/support) [support@revo.co.uk](mailto:support@revo.co.uk)



NOTE: THE MANUFACTURER IS NOT RESPONSIBLE FOR ANY RADIO OR TV INTERFERENCE CAUSED BY UNAUTHORIZED MODIFICATIONS TO THIS EQUIPMENT. SUCH MODIFICATIONS COULD VOID THE USER'S AUTHORITY TO OPERATE THE EQUIPMENT.