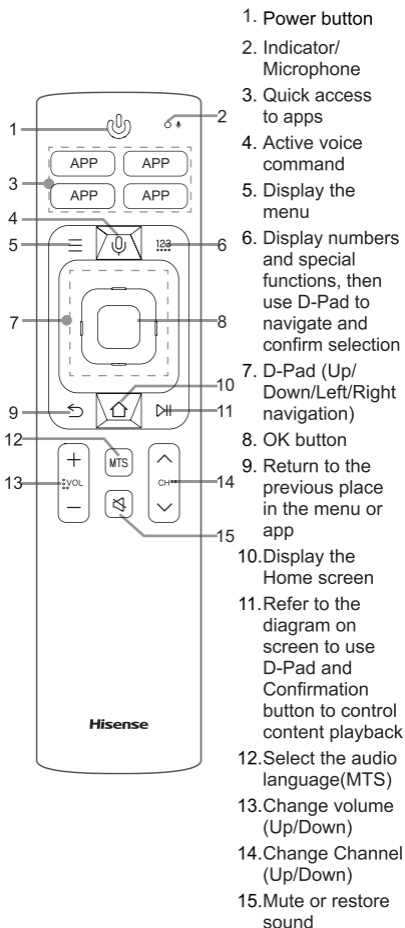


USER MANUAL BT Remote ERF6D60

Please read this manual thoroughly.
We recommend that you keep the manual for future reference.



Specifications:

Model	ERF6D60
Dimension (WxHxD)	6.8 x 1.7 x 0.6 inches (172 x 42 x 15.5 mm)
Weight	98g
Battery	AAA batteries x 2

Remote Control Range Information

- The remote control can work at a distance of up to 26 feet in front of the TV set.(This distance is used by infrared means in an unpaired state.)
- It can work at a 30 degree horizontal or vertical angle.(This angle is used by infrared means in an unpaired state.)

Begin Using Your Remote

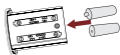
1. Press and slide the back cover to open the battery compartment of the remote control.
2. Insert two AAA batteries. Make sure to match the (+) and (-) ends of the batteries with the (+) and (-) ends indicated in the battery compartment.
3. Restore the battery compartment cover.

1



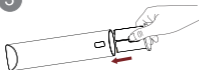
Press the button
and slide

2



Insert the batteries

3




Restore the compartment

Notes

- Discard batteries in a designated disposal area. Do not throw them into a fire.
- Remove old batteries immediately to prevent them from leaking into the battery compartment.
- If you do not intend to use the remote control for a long time, remove the batteries.
- Battery chemicals can cause a rash. If the batteries leak, clean the battery compartment with a cloth. If chemicals touch your skin then wash it immediately.
- Do not mix old and new batteries.
- Do not mix alkaline, standard (carbon-zinc) or rechargeable (NiCd, NiMH, etc.) batteries.
- Do not continue using the remote if it gets warm or hot. Call our Support Center phone number (listed on the Support page of the website) immediately.

Pairing the Remote Control

1. Pair the remote to the TV after you power it on. Keep the remote control within 20 feet from the TV. Press and hold the [] button at least 3 seconds to start pairing.
2. If the remote paired successfully then a confirmation message will display on the screen. If it did not pair successfully, then an unsuccessful message will display. Repeat step 1.

Notes

- If an unknown error occurred with the remote then it could have been caused by interference. Try to remove what's causing the interference and pair it again.
- If an unknown error occurred in the remote control while the battery power is normal, you can take out the batteries and press any key for 1~2 seconds, then the remote control can work normally.
- The remote cannot be paired to the TV while the TV is in standby mode.

FCC Notice

- This device complies with Part 15 of the FCC Rules. Operation is subject to the follow two conditions: (1) this device may not cause harmful interference, and (2) this device must accept any interference received, including interference that may cause undesired operation.

- The manufacturer is not responsible for any radio or TV interference caused by unauthorized modifications to this equipment. Such modifications could void the user's authority to operate the equipment.
- This equipment has been tested and found to comply with the limits for a Class B digital device, pursuant to Part 15 of the FCC Rules. These limits are designed to provide reasonable protection against harmful interference in a residential installation. This equipment generates, uses, and can radiate radio frequency energy, and if not installed and used in accordance with the instructions, may cause harmful interference to radio communications.
- However, there is no guarantee that interference will not occur in a particular installation. If this equipment does cause harmful interference to radio or television reception, which can be determined by turning the equipment OFF and ON, the user is encouraged to try to correct the interference by one or more of the following measures:
 - 1) Reorient or relocate the receiving antenna
 - 2) Increase the separation between the equipment and receiver
 - 3) Connect the equipment into an outlet on a circuit different from that to which the receiver is connected
 - 4) Consult the dealer or an experienced radio/TV technician for help.

Industry Canada Notice

- This device complies with industry Canada license exempt RSS standards(s). Operation is subject to the following two conditions: (1) this device may not cause interference, and (2) this device must accept any interference, including interference that may cause undesired operation of the device.

FCC RF Safety Caution Statement

- This equipment complies with FCC RF radiation exposure limits set forth for an uncontrolled environment. This equipment must be installed and operated in accordance with provided instructions and must not be co-located or operating in conjunction with any other antenna or transmitter. End-users and installers must be provided with antenna installation instructions and transmitter operating conditions for satisfying RF.

RF Exposure Statement for Canada

- The radiated output power of the Wireless Device is below the Industry Canada (IC) radio frequency exposure limits. The Wireless Device should be used in such a manner such that the potential for human contact during normal operation is minimized.
- La puissance de sortie émise par l'appareil de sans fil Dell est inférieure à la limite d'exposition aux fréquences radio d'Industry Canada (IC). Utilisez l'appareil de sans fil Dell de façon à minimiser les contacts humains lors du fonctionnement normal.