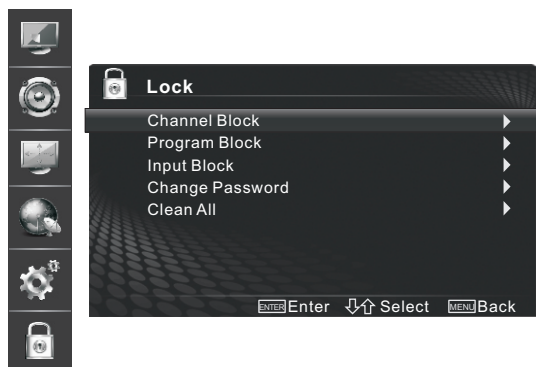


Basic Features

Using the Lock Menu

When you first use this function, the default password is [0000]. Once you input this password, you can set options.



You can adjust:

Channel Block - Lock Channels on the TV.

Program Block - Lock Program on the TV.

Rating Enable: Block or unblock TV ratings.

U.S. TV Ratings: Restrict TV programs by USA Ratings.

U.S. Movie Ratings: Restrict movie by USA Ratings.

Canadian English/French Ratings: Restrict movie and TV programs by Canadian Ratings.

Open V-Chip: Display an advanced V-Chip ratings table for digital channels.

Block Unrated TV: Block unrated TV programs.

Input Block - Lock Input source on the TV.

Change Password - If you want change the default password, first enter the new password then enter the same password again.

Clean All - You can reset all locks to factory mode.

Following is the description of these ratings.

U.S. Movie Ratings

Rating	Defined as
G	General audience
PG	Parental Guidance suggested
PG-13	Parents strongly cautioned
R	Restricted
NC-17	No one 17 and under admitted
X	Adult audience only

U.S. TV Ratings

Age	Defined as
TV-Y	All children
TV-Y7	Directed to older children
TV-G	General audience
TV-PG	Parental Guidance suggested
TV-14	Parents Strongly cautioned
TV-MA	Mature Audience only

Contents	Defined as
A	All of the ratings below that rating set blocked automatically
D	Suggestive dialogue
L	Strong language
S	Sexual situations
V	Violence
FV	Fantasy Violence

Canadian English Ratings

Rating	Description
C	Children
C8+	Children 8 years and older
G	General Programming, suitable for all audiences
PG	Parents Guidance
14+	Viewers 14 years and older
18+	Adult Programming

Canadian French Ratings

Rating	Description
G	General
8 ans+	8+General; Not recommended for young children
13 ans+	Programming may not be suitable for children under the age of 13
16 ans+	Programming is not be suitable for children under the age of 16
18 ans+	Programming restricted to adults

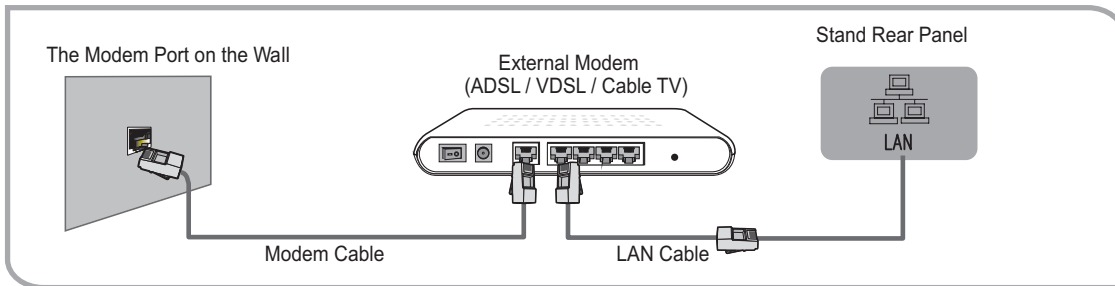
Network Connection

You can set up your TV so that it can access the Internet through your local area network (LAN) with a ethernet or wireless connection.

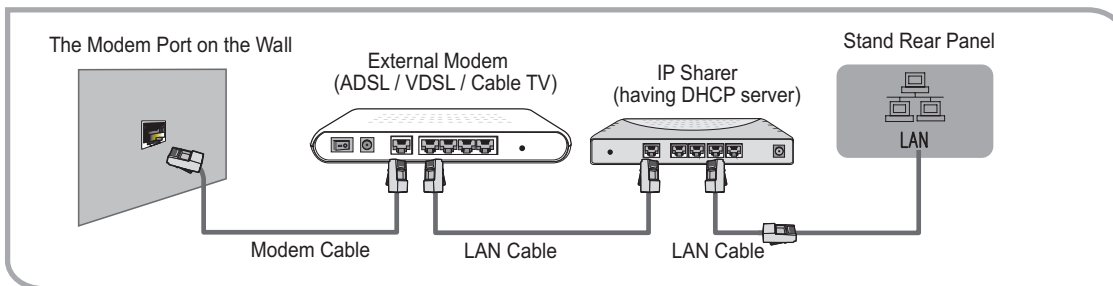
■ Connecting to a Wired Network

You can attach your TV to your LAN by using matchable cable in three ways:

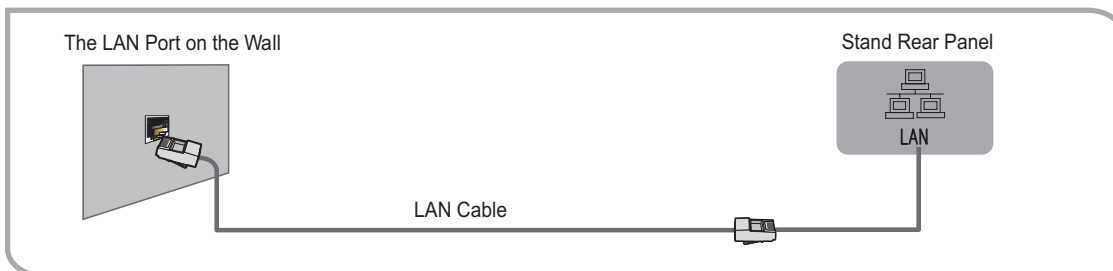
- You can attach your TV to your LAN by connecting the LAN port on the back of your TV to an external modem using a Cat 5 cable. See the diagram below.



- You can attach your TV to your LAN by connecting the LAN port on the back of your TV to an IP Sharer which is connected to an external modem. Use LAN cable for the connection. See the diagram below.



- Depending on how your network is configured, you may be able to attach your TV to your LAN by connecting the LAN port on the back of your TV directly to a network wall outlet with a Cat 5 cable. See the diagram below. Note that the wall outlet is attached to a modem or router elsewhere in your house.



If you have a Dynamic Network, you should use an ADSL modem or router that supports Dynamic Host Configuration Protocol (DHCP). Modems and routers that support DHCP automatically provide the IP address, subnet mask, gateway, and DNS, so you don't have to enter them manually. Most home networks are Dynamic Networks.

Some networks require a Static IP address. If your network requires a Static IP address, you must enter the IP address, subnet mask, gateway, and DNS values manually on your TV's Cable Setup Screen when you set up the network connection. To get the IP address, subnet mask, gateway, and DNS values, contact your Internet Service Provider (ISP).

If you have a Windows computer, you can also get these values through your computer.

☑ NOTE

You can use ADSL modems that support DHCP if your network requires a Static IP address. ADSL modems that support DHCP also let you use Static IP addresses.

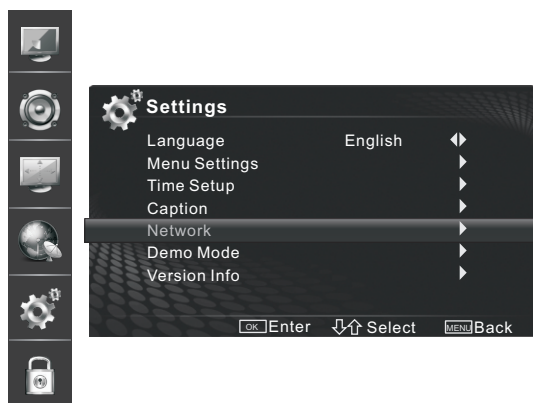
Advanced Features

■ Network Setup (Auto)

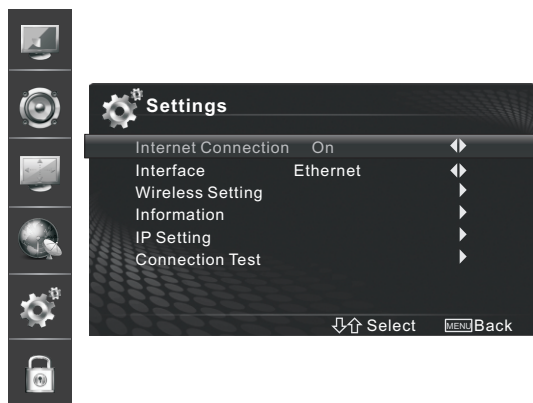
Use the Automatic Network Setup while your connecting the TV to a network that supports DHCP. To set up your TV's cable network connection automatically, follow these steps:

How to set up automatically

1. Connect your TV to your LAN as described in the previous section.
2. Turn on your TV, operate according to the description in the **Settings** menu until the **Network** screen appears.



3. On the **Network** screen, select **Configuration** and press [ENTER] button to enter the submenu.
4. Set **Internet Connection** to **On** and **Interface** to **Ethernet**.



5. Select **IP Setting** and press [ENTER] button to enter it.
6. Set Address Type to Auto.
7. Auto acquires and enters the needed internet values automatically.
8. If the Network function has not acquired the network connection values, go to the manual for directions.

■ Network Setup (Manual)

Use the Automatic Network Setup when connecting your TV to a network that requires a Static IP address.

Getting the Network Connection Values

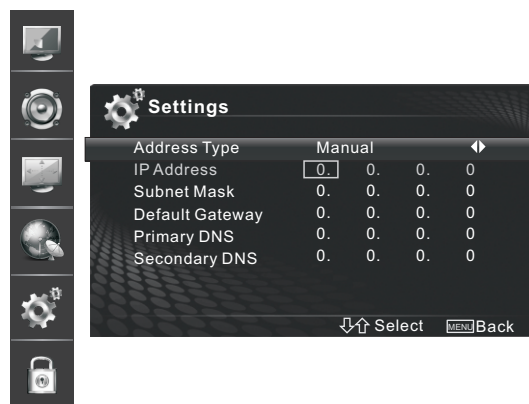
To get the network connection values on most windows computers, follow these steps:

1. Right click the Network icon on the bottom right of the screen.
2. In the pop-up menu that appears, click Status.
3. On the dialog that appears, click the Support tab.
4. On the Support tab, click the Details button. The network connection values are displayed.

How to set up manually

To set up your TV's cable network connection manually, follow these steps:

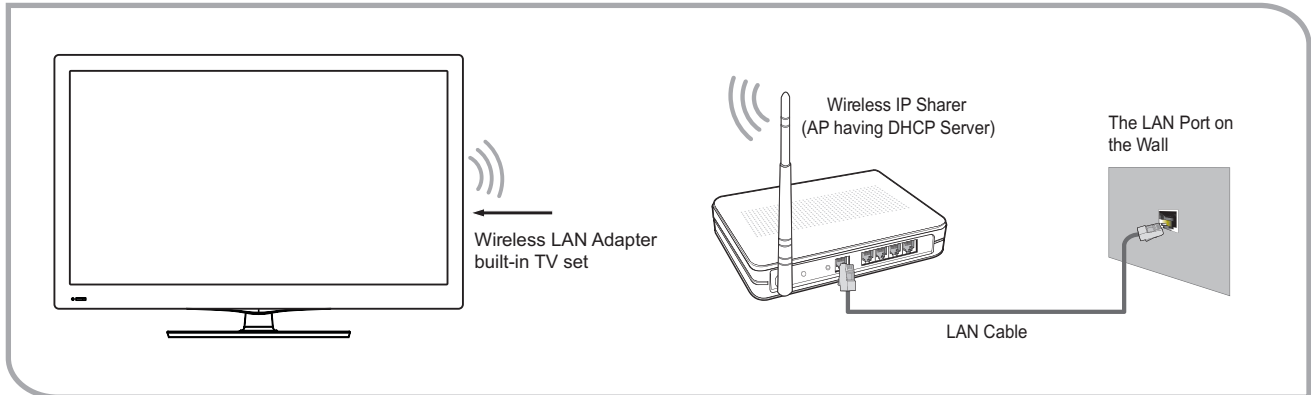
1. Follow Steps 1 through 5 in the "How to set up automatically" procedure.
2. Set **Address Type** to **Manual**.
3. Press [▲/▼] button to select **IP Address** and press [◀/▶] button to move the cursor to the entry field. Then press 0~9 buttons to enter the numbers.
4. Press [Menu] button to exit **IP Address** and press [▲/▼] button to select the next options to enter the numbers.



5. When done, press [Menu] button to return to the previous menu.
6. Select **Connection Test** to check the internet connectivity.

Connecting to a Wireless Network

To connect your TV to your network wirelessly, you need a wireless router or modem. See the illustration below.



Hisense's built-in Wireless LAN Adapter supports the IEEE 802.11 B/G/N communication protocols. Hisense recommends using IEEE 802.11N. When you play the video over a IEEE 802.11B/G connection, the video may not play smoothly.

NOTE

- You must use the Hisense's built-in Wireless LAN Adapter to use a wireless network, the set doesn't support external USB network adapter.
- To use a wireless network, your TV must be connected to a wireless IP sharer. If the wireless IP sharer supports DHCP, your TV can use a DHCP or static IP address to connect to the wireless network.
- Select a channel for the wireless IP sharer that is not currently being used. If the channel set for the wireless IP sharer is currently being used by another device nearby, this will result in interference and communication failure.
- If you apply a security system other than the systems listed below, it will not work with the TV.
- If Pure High-throughput (Greenfield) 802.11N mode is selected and the Encryption type is set to WEP, TKIP or TKIP-AES (WPS2Mixed) for your AP, Hisense TVs will not support a connection in compliance with new Wi-Fi certification specifications.
- If your AP supports WPS (Wi-Fi Protected Setup), you can connect to the network via PBC (Push Button Configuration) or PIN (Personal Identification Number). WPS will automatically configure the SSID and WPA key in either mode.
- If your router, modem, or device isn't certified, it may not connect to the TV .
- Connection Methods: You can setup the wireless network connection three ways.
 - Scan
 - Manual
 - Auto

Advanced Features

DLNA Settings

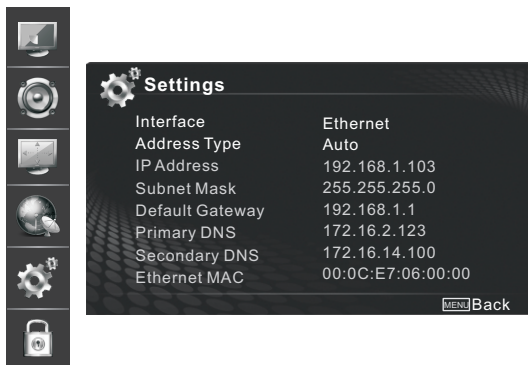
Computer, TV and other digital devices can be connected via DLNA and they can share files with each other. You can use the TV set as a DLNA DMP device to enjoy movies, pictures, musics and other multimedia materials in your computer through DLNA connection.

DLNA Setting needs to be set on TV and computer Respectively.

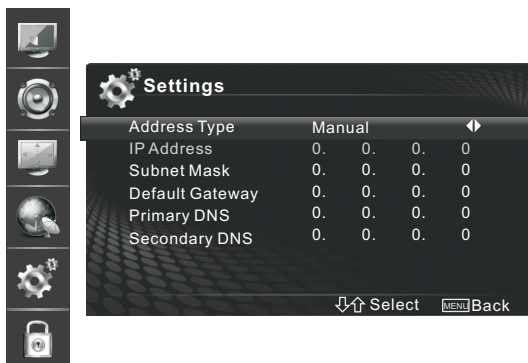
The Network setup on the TV 's screen:

Network setup:

1. Turn on your TV, operate according to the description in the **Settings** menu until the **Network** screen appears.
2. On the **Network** screen, select **Configuration** and press [ENTER] button to enter the submenu.
3. Set **Internet Connection** to **On** and Interface to Ethernet.
4. Select **IP Setting** and press [ENTER] button to enter it.
5. Set **Address Type** to **Auto**.
6. Auto acquires and enters the needed internet values automatically.



7. If the Network function has not acquired the network connection values, go to the manual for directions.
8. If set **Address Type** to **Manual**, enter **IP Setting**. Then press [▲/▼] button to select IP Address and press [◀/▶] button to move the cursor to the entry field. Then press 0~9 buttons to enter the numbers.



9. Press [Menu] button to exit **IP Address** and press [▲/▼] button to select the next options to enter the numbers.
10. When done, press Menu to return to the previous menu.
11. Select **Connection Test** to check the internet connectivity.
If the test is not successful, please check Whether the configuration is correct. If the test is successful, operate as the following instructions.

Set DLNA to On:

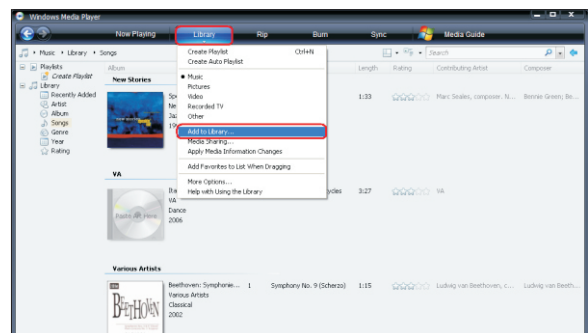
1. On the Network screen, select **Applications** and press [ENTER] button to enter the submenu.
2. Press [◀/▶] button to set **DLNA to On**.



Media Share Settings in computer

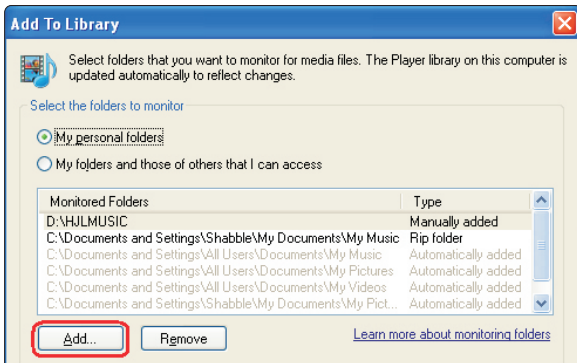
If your computer can not support DLNA, you need install the software that supports DLNA such as TVersion and Windows Media Player11. It is recommended to select Windows Media Player11 to set and its setup is more simple.

1. Start the Windows Media Player11.
2. Click "Library" and then "Add to Library..."

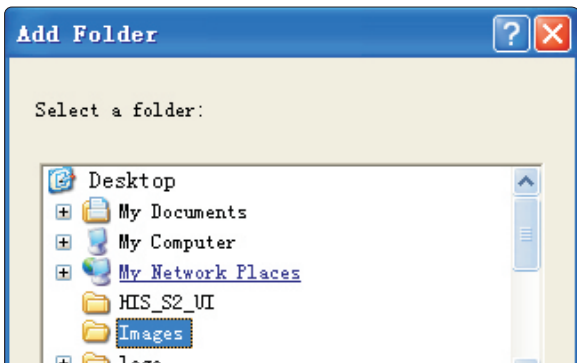


Advanced Features

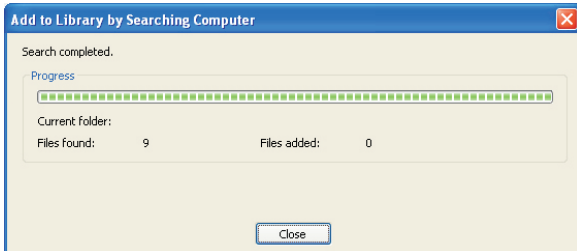
3. The “Add To Library” will pop up on the screen. Click “Add”.



4. Select a folder and click OK button.

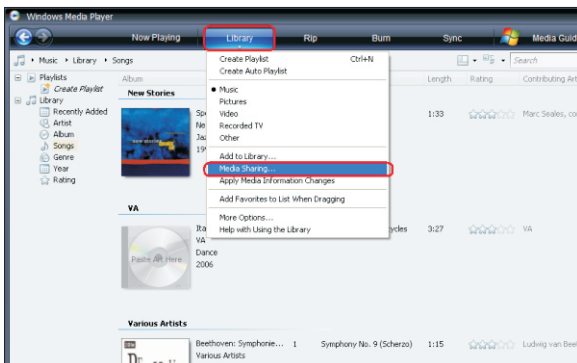


5. Click “Close” to close the dialog.

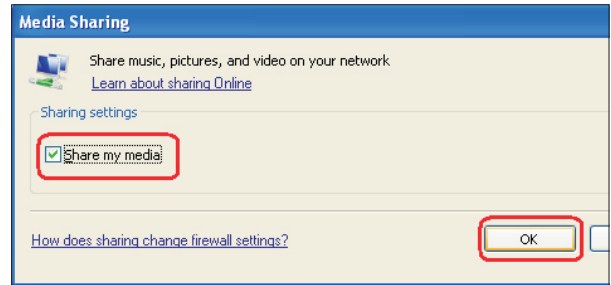


Setting to share files

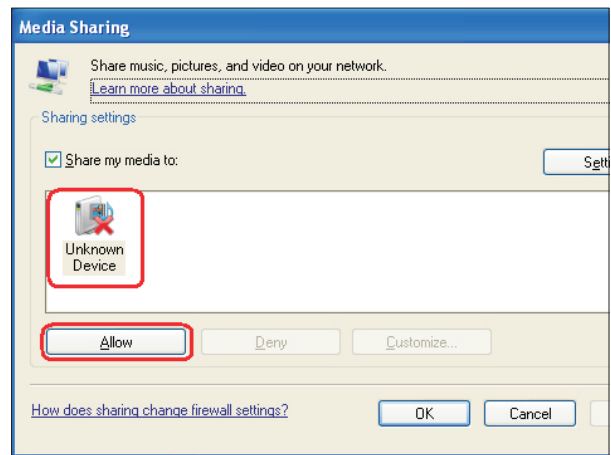
1. Click “Library” and move the cursor to select “Media Sharing...”



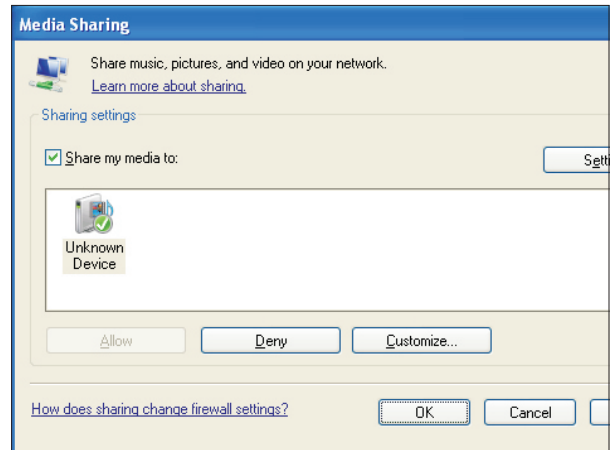
2. Click the box right before “Share my media” to select it.



3. An equipment icon will appear on the white area if the DLNA Settings has been correctly set. Select the sign and then click “Allow”.



4. Then the TV would directly access the shared files in the computer.



Advanced Features

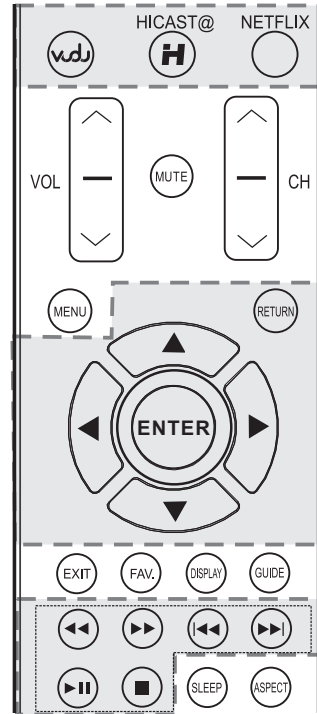
Network Function

NOTICE FOR USE

If you use VUDU services, see the following note before using it.

1. Use of internet services requires a working broadband internet connection (1 to 2 Mbps for SD video, 2.25 to 4.5 Mbps for HD video and 4.5 to 9 Mbps for HDX video).
2. VUDU and other internet-based services are not provided by Hisense, may change or be discontinued at any time and may be subject to restrictions imposed by your internet service provider. The quality, functionality, or availability of such services may be affected by the capacity of your Internet connection. Use of VUDU video-on-demand and other internet services may require the creation of a separate account through a computer with internet access.
3. Not all VUDU services would be used on this model.
4. VUDU video-on-demand and other internet services may require payment of one-time and/or recurring charges.
5. You are solely responsible for any charges incurred as a result of using internet-based content, including, without limitation, communications charges for the provision of internet or network services and any charges incurred for third-party internet content services, such as video on demand or subscription services. All third-party services are provided in accordance with whatever terms and conditions are established between such third-party providers and you.
6. HISENSE MAKES NO REPRESENTATIONS OR WARRANTIES ABOUT THE CONTENT, AVAILABILITY OR FUNCTIONALITY OF THE VUDU SERVICE OR OTHER INTERNET DELIVERED THIRD-PARTY SERVICES AND DOES NOT WARRANT THAT ANY OF THEM WILL BE UNINTERRUPTED, ERROR FREE OR SATISFACTORY. ANY IMPLIED WARRANTY, INCLUDING BUT NOT LIMITED TO ANY IMPLIED WARRANTY OF MERCHANTABILITY OR FITNESS FOR A PARTICULAR PURPOSE OF ANY THIRD PARTY CONTENT OR SERVICE, IS EXPRESSLY EXCLUDED AND DISCLAIMED. UNDER NO CIRCUMSTANCES WILL HISENSE BE LIABLE IN CONTRACT, TORT OR UNDER ANY OTHER THEORY FOR ANY DAMAGES ARISING OUT OF OR IN CONNECTION WITH YOUR USE OF ANY CONTENT OR SERVICE PROVIDED BY ANY THIRD PARTY, EVEN IF ADVISED OF THE POSSIBILITY OF SUCH DAMAGES.

Operational buttons



Buttons	Description
	Press to enter VUDU HD Movies directly.
HICAST@ 	Links to various internet services.
NETFLIX 	Press to launch Netflix instant streaming directly.
	Selects the on-screen menu items
ENTER	Confirms selections
EXIT	Closes the menu.
RETURN	Returns to the previous menu.
	Stops playback and displays the movie title screen.
	Sets pauses and still pictures. Press the button to return to playback.
	Displays the TrickPlay screen and fast forwards playback.
	Displays the TrickPlay screen and fast reverses playback.
	Plays the next video.
	Plays the previous video.