

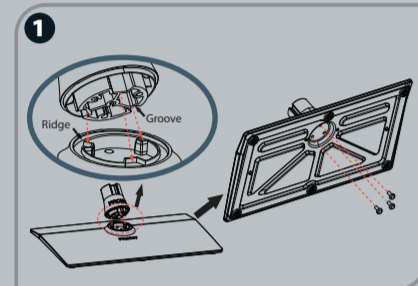
1 ACCESSORIES LIST

- User Manual
- Quick Setup Guide
- Remote Control
- Screw A (M5 × 12) × 8
- Screw B (M6 × 30) × 4
- Spacer × 4
- Batteries: AAA × 2

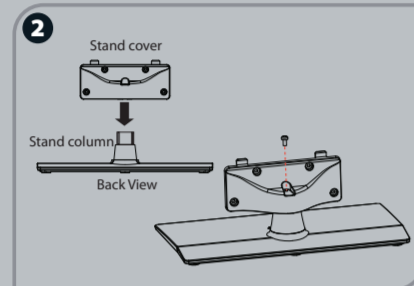
2 INSTALLING THE STAND

CAUTION

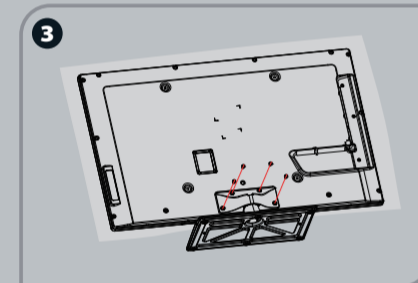
Carefully place your TV facedown on a soft, cushioned surface to prevent damage to the TV or scratching to the screen.



Align the front of the stand column with the front of the base, then insert the stand column into the base making sure that the groove in the stand column aligns with the ridge in the base. Secure the stand column to the base with 3 Screws A (M5 × 12).



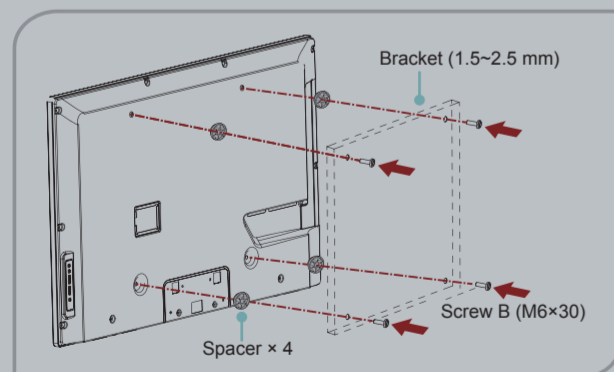
Align the stand cover with the stand column, then secure the stand cover to the stand column with 1 Screw A (M5 × 12). Make sure that the bottom of the stand cover is flush against the top of the stand column.



Secure the stand to the TV with the 4 Screws A (M5 × 12).

3 INSTALLING A WALL-MOUNT BRACKET

- If you want to attach the TV to a wall-mount bracket (not provided), you should first remove the stand if it is pre-attached. Make sure the TV is laid face-down on a clean, safe, and cushioned surface.
- Attach purchased bracket (1.5~2.5 mm thickness) on the TV with the 4 screws in the Screw D pack.



3. Follow instructions provided with the wall bracket.

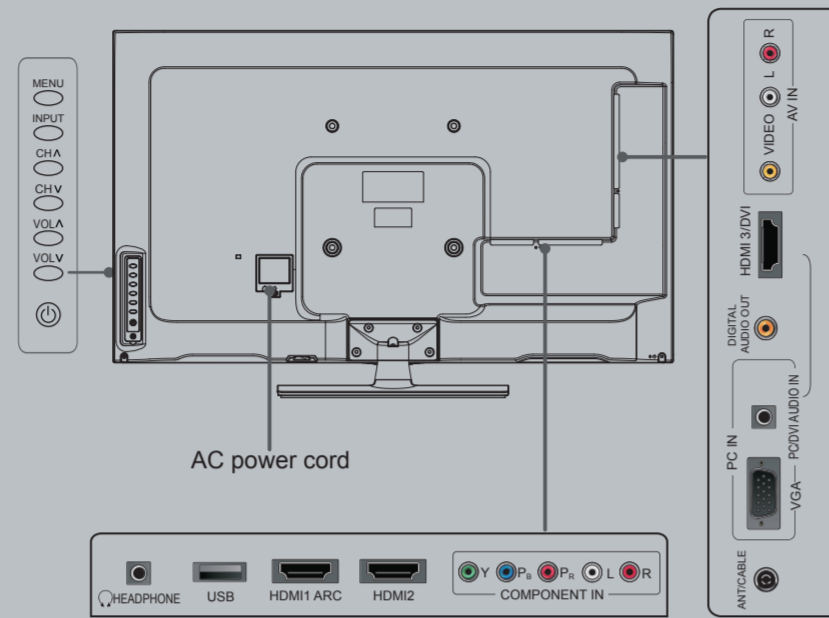
- If you are not sure of your ability to complete the installation, contact a professional installer or service technician for assistance. The manufacturer is not responsible for any damages or injuries that occur due to mishandling or incorrect assembly.
- Be sure to use the provided spacers between the TV and the bracket when attaching the mount.

WARNING

To prevent internal damage to the TV and ensure the TV is mounted securely, use only the 4 screws in the Screw D pack.

	Screws B 9.5~12.5 mm Wall-mount Bracket Screw Spacer the TV's rear cover	Wall-mount hole pattern VESA (mm) 200 × 200 Wall-mount screw size (mm) M6
--	--	--

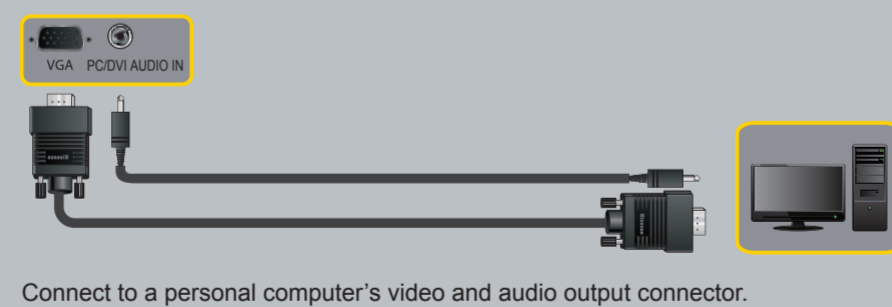
4 MAKING CONNECTIONS



Item	Description
MENU	Display the on-screen menu to setup your TV's features.
INPUT	Select the different input signal sources.
VOL ▲ / ▼	Adjust the volume.
CH ▲ / ▼	Select the channel.
(Power button)	Turn on the TV or put the TV in standby mode. Caution: The TV continues to receive power even in standby mode. Unplug the power cord to disconnect power.
ANT/CABLE	Connect an antenna or cable TV to this jack.
HDMI	HDMI (High-Definition Multimedia Interface) provides an uncompressed, all digital audio/video interface between this TV and any HDMI-device, such as a set-top box, Blu-ray disc player, or A/V receiver.
COMPONENT IN	Connect to a DVD player, Digital Set-Top-Box, or other A/V devices with component (Y _P B _P R) video and audio output jacks.
AV IN	Connect to the composite video and audio (L/R) output jacks on external video devices.
VGA PC/DVI AUDIO IN	Connect to a PC or other devices with a VGA or DVI interface.
HEADPHONE	Connect headphone for private listening.
DIGITAL AUDIO OUT	Connect an audio amplifier to this jack.
USB	Port for Digital Media Player and for software update.

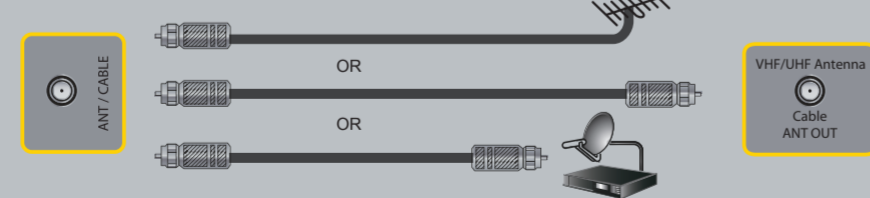
Check the jacks' for position and type before making any connections. Loose connections can result in image or color problems. Make sure that all connections are tight and secure.

VGA & PC / DVI AUDIO IN



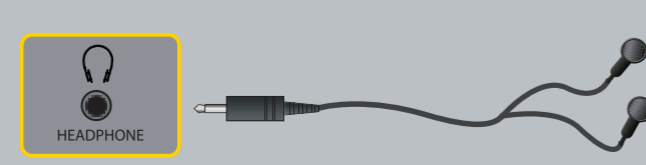
Connect to a personal computer's video and audio output connector.

ANT/CABLE IN



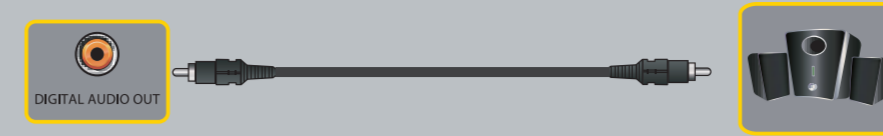
Connect to a broadcast antenna or cable TV.

HEADPHONE



Connect Headphone for audio out of the TV.

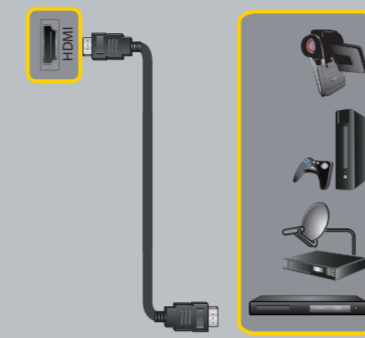
DIGITAL AUDIO OUT



Connect a digital audio device to this jack.

BEST

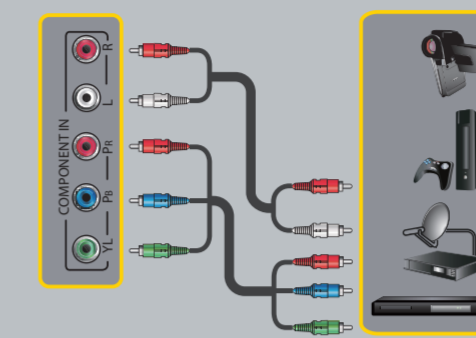
HDMI IN



Available devices: DVD, Blu-ray player, Audio Video Receiver, cable box, satellite receiver, game station.

BETTER

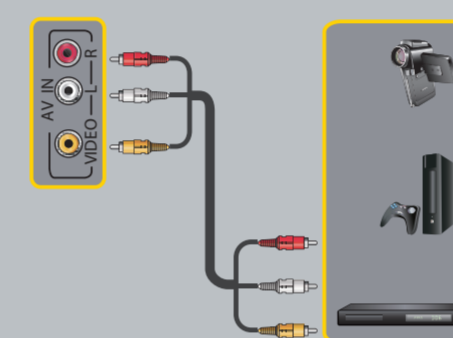
COMPONENT IN



Available devices: DVD, Blu-ray player, Audio Video Receiver, cable box, satellite receiver, game station.

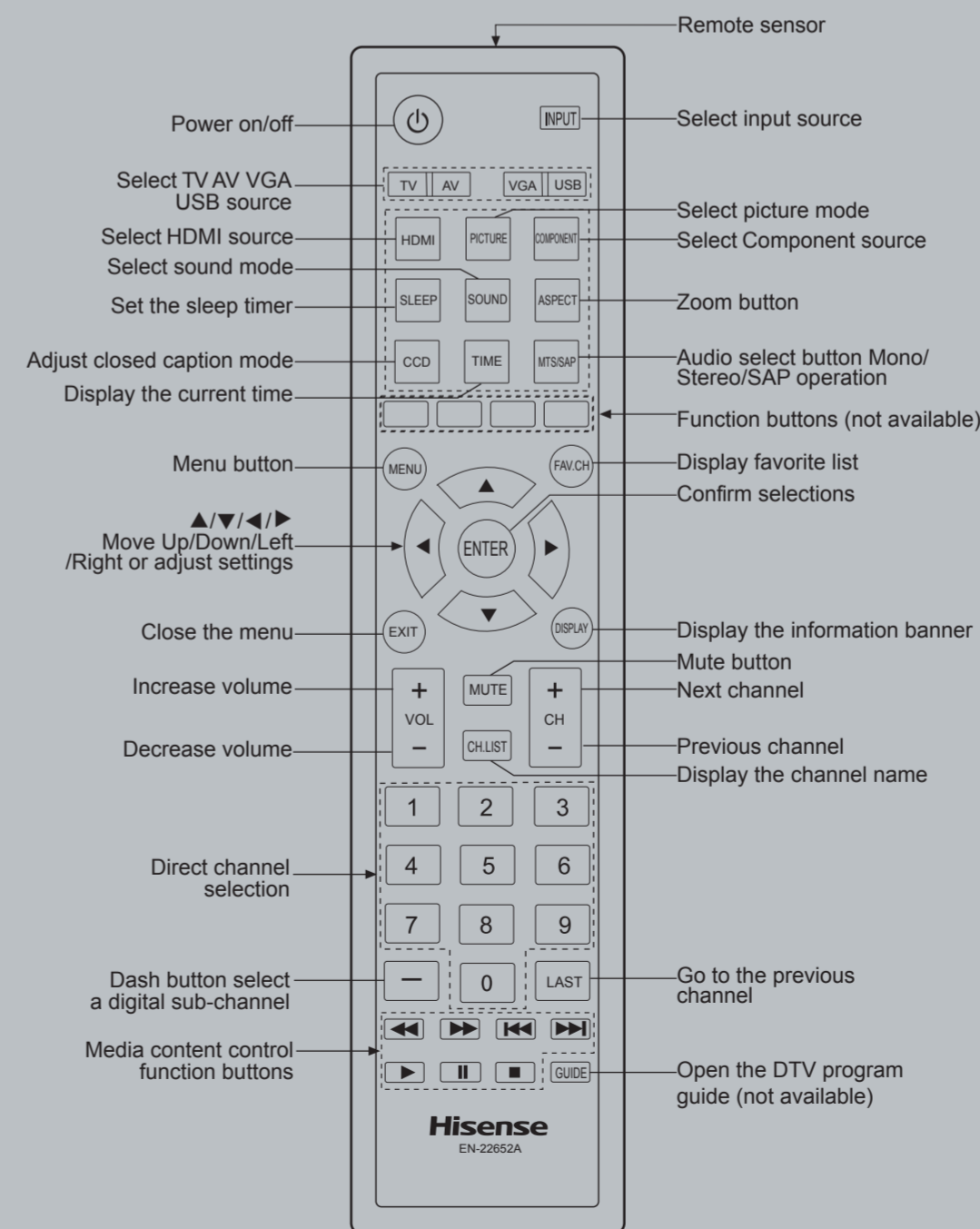
GOOD

AV IN



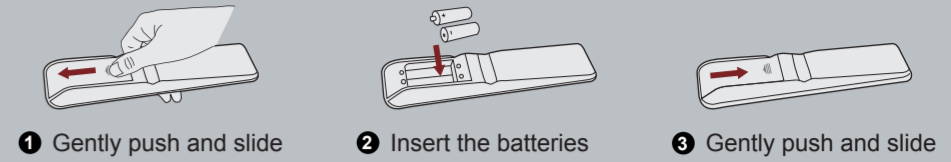
Connect the composite video and audio output jacks of your legacy A/V equipment, such as a VCR.

5 VIEWING THE REMOTE CONTROL



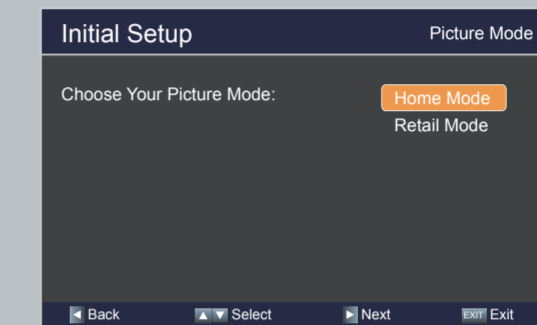
CY-G
条形码定位框 35x10.5mm
物料号:

- Slide the back cover to open the battery compartment of the remote control.
- Insert two AAA size batteries. Make sure to match the (+) and (-) ends of the batteries with the (+) and (-) ends indicated in the battery compartment.
- Close the battery compartment cover.



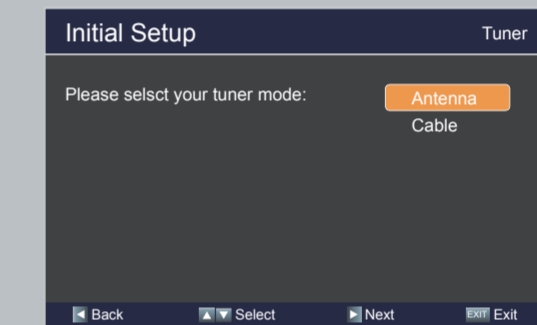
6 CHOOSE YOUR PICTURE MODE

- Press [▲/▼] to select your Picture Mode: Home Mode or Retail Mode, press [ENTER] button to confirm.
- If you select Retail Mode, a message appears "If you select Retail Mode, then Energy saving is not realized. Are you sure?" Select "Yes" to continue, or select "No" to change your selection.
- For energy saving, we kindly suggest you select the Home Mode.



7 CHOOSE YOUR TUNER MODE

Press [▲/▼] to select your Tuner Mode: Antenna or Cable, press [ENTER] button to confirm.



8 SPECIFICATIONS

Model	40K360	50K360
Dimension	Without Stand	Width: 36 inches (922 mm) Height: 21.7 inches (552 mm) Depth: 2.3 inches (58 mm)
	With Stand	Width: 36 inches (922 mm) Height: 24 inches (607 mm) Depth: 8.9 inches (225 mm)
Weight	Without Stand	24.3 lbs (11kg)
	With Stand	27.6 lbs (12.5kg)
Screen size (diagonal)	40 inches	50 inches
Screen resolution	1920 × 1080	
Audio power	7 W + 7 W	
Power consumption	Please refer to the rating label.	
Power supply	120 V ~ 60 Hz	
Receiving systems	Analog	NTSC
	Digital	ATSC / QAM
Environmental conditions	Temperature: 41°F ~ 95°F (5°C~ 35°C) Humidity: 20%~80% RH Atmospheric pressure: 86 kPa - 106 kPa	
Component Input	480 I / 60 Hz, 480 P / 60 Hz, 720 P / 60 Hz, 1080 I / 60 Hz, 1080 P / 60 Hz	
VGA Input	VGA (640×480 / 60 Hz), SVGA (800×600 / 60 Hz), XGA (1024×768 / 60 Hz)	
HDMI Input	RGB / 60 Hz (640×480, 800×600, 1024×768) YUV / 60 Hz (480 I, 480 P, 720 P, 1080 I, 1080 P)	

NOTES

Features, appearance and specifications are subject to change without notice. If you encountered difficulty when setting up your TV, we suggest you refer to the Trouble Shooting tips in the User Manual.