

# Hisense

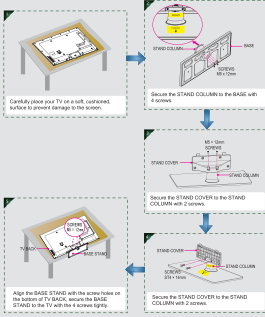
## K362G Series QUICK SETUP GUIDE

### 1 ACCESSORIES LIST

- User Manual
- Quick Setup Guide
- Remote Control
- Screw (M5 x 10mm) x 10
- Screw (ST4 x 14mm) x 2
- Spacer x 4
- Batteries: AAA x 2
- Wall-mounted screw (M6 x 45mm) x 4

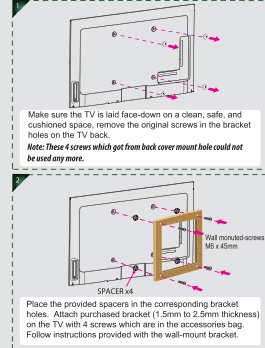
### 2 INSTALLING THE STAND

Follow the illustrations below to complete the installation steps.



### 3 INSTALLING A WALL-MOUNT BRACKET

If you want to attach the TV to a wall-mount bracket (not provided), you should first remove the stand if it is pre-attached (see Step 1).



**Wall-Mount Bracket**

8.5 ~ 11.5 mm

Wall-Mount Bracket

The TV's rear cover

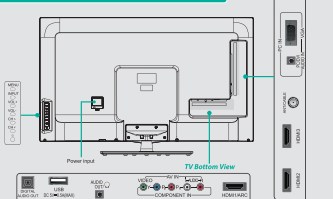
Screw Spacer

Wall-Mount hole pattern VESA (mm)	400 x 400
Wall-Mount screw size (mm)	M6

Follow instructions provided with the Wall-Mount Bracket.

- If you are not sure of your ability to do complete the installation, contact a professional installer or service technician for assistance. The manufacturer is not responsible for any damages or injuries that occur due to mishandling or incorrect assembly.
- The selected screws are 9.5 ~ 11.5 mm in length when measured from the attaching surface of the TV's rear cover. The diameter and length of the screws differ depending on the Wall-Mount Bracket model.

### 4 BUTTONS AND CONNECTORS



Item	Description
<b>MENU</b>	Display the on-screen menu to setup your TV's features.
<b>INPUT</b>	Select the different input signal sources.
<b>VOL +/-</b>	Adjust the volume.
<b>CH +/-</b>	Select the channel.
<b>(Power button)</b>	Turn on the TV or put the TV in standby mode. <b>Caution:</b> The TV continues to receive power even in standby mode. Unplug the power cord to disconnect power.
<b>ANT/CABLE</b>	Connect an antenna or cable TV to this jack.
<b>HDMI</b>	HDMI (High-Definition Multimedia Interface) provides an uncompressed, all digital audio/video interface between this TV and any HDMI-device, such as a set-top box, Blu-ray disc player, or A/V receiver.
<b>COMPONENT IN</b>	Connect to a DVD player, Digital Set-Top-Box, or other A/V devices with component (V.P.P.) video and audio output jacks.
<b>AV IN</b>	Connect to the composite video and audio (L/R) output jacks on external video devices.
<b>VGA / PC/DVI AUDIO IN</b>	Connect to a PC or other devices with a VGA or DVI interface.
<b>(AUDIO) OUT</b>	Connect headphone or analog sound system using RCA Y-cable (18" stereo mini to L/R phono-not provided).
<b>DIGITAL AUDIO OUT</b>	Connect an audio amplifier to this jack.
<b>USB</b>	Port for Digital Media Player and for software update.

### 5 REMOTE CONTROL

Remote sensor

Power on/off

Select input source

Select TV AV VGA source

Select picture mode

Select HDMI source

Select Component source

Select sound mode

Zoom button

Set the sleep timer

Adjust closed caption mode

Audio select button Mono/Stereo/SAP operation

Display the current time

Media content control function buttons

Menu button

Display favorite list

Move Up/Down/Left/Right or adjust settings

Confirm selections

Close the menu

Display the information banner

Increase volume

Mute button

Decrease volume

Next channel

Direct channel selection

Previous channel

Dash button select a digital sub-channel

Display the channel name

Media content control function buttons

Go to the previous channel

Not available

#### CHANGE THE BATTERIES

- Slide the back cover to open the battery compartment of the remote control.
- Insert two AAA size batteries. Make sure to match the (+) and (-) ends indicated in the battery compartment.
- Close the battery compartment cover.



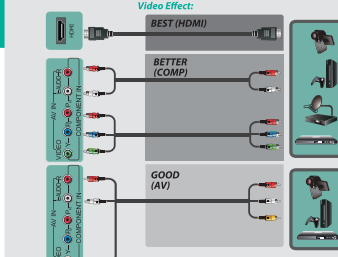
### 6 TV CONNECTORS

Check the jacks for position and type before making any connections. Loose connections can result in image or color problems. Make sure that all connections are tight and secure.

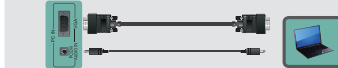
**ANT** Connect an outdoor VHF/UHF antenna.

**USB** Connect a USB device for browsing photos and movies

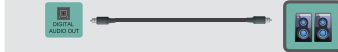
**HDMI / COMP / AV** Connect an HDMI cable or Comp/AV Adapter from an external A/V equipment.



**VGA & VGA AUDIO** Connect a VGA cable and an audio cable from the PC.



**DIGITAL AUDIO OUT** Connect an optical cable from an external digital audio system.



**HEADPHONE** Connect Headphone for audio out of the TV.



### 7 SPECIFICATIONS

Model Name	55K362G
<b>Dimension</b>	Without Stand Width: 49.2 inches (1249 mm) Height: 29.0 inches (737 mm) Depth: 2.9 inches (88 mm) With Stand Width: 49.2 inches (1249 mm) Height: 31.6 inches (803 mm) Depth: 13.0 inches (330 mm)
<b>Weight</b>	Without Stand: 52.9 lbs (24 kg) With Stand: 61.7 lbs (28 kg)
<b>LCD Panel Minimum size (diagonal)</b>	54.6 inches
<b>Screen resolution</b>	1920 x 1080
<b>Audio power</b>	10 W + 10 W
<b>Power supply</b>	120 V ~ 60 Hz
<b>Receiving systems</b>	Analog: NTSC Digital: ATSC / QAM
<b>Receiving channels</b>	VHF: 2-13 UHF: 14-69 CATV: 1 - 125 Digital Terrestrial Broadcast (DVB-S): 2 - 69 Digital cable (QAM): 1 - 135
<b>Tuner type</b>	Frequency synthesized
<b>Environmental conditions</b>	Temperature: 41°F ~ 95°F (5°C ~ 35°C) Humidity: 20% ~ 80% RH Atmospheric pressure: 86 kPa ~ 106 kPa
<b>Component Input</b>	480 I / 60 Hz, 480 P / 60 Hz, 720 P / 60 Hz, 1080 I / 60 Hz, 1080P/60Hz
<b>VGA Input</b>	VGA (800x480 / 60 Hz), SVGA (800x600 / 60 Hz), XGA (1024x768 / 60 Hz)
<b>HDMI Input</b>	RGB / 60 Hz (640x480, 800x600, 1024x768) YUV / 60 Hz (480 I, 480 P, 720 P, 1080 I, 1080P)

### 8 TURNING THE TV ON FOR THE FIRST TIME

**Menu Language**

Choose Your Menu Language

English, Español, Français

Select menu language to English, Spanish, or French.

Connect your TV's power cord to a power outlet, then press power. The initial setup screen opens. Press [▲▼] button to select your language, press [ENTER] button to confirm.

**Time Setting**

Choose Your Time Setting

Mode: Auto, Time Zone: Pacific, Daylight Savings: On, Year: 2012, Month: January, Day: 01, Time: 01:10 AM

Setting Time Zone: Select the local time zone according to your region. Setting the Time: Press [▲▼] to select the number you want to set and press [▲▼] to set.

**Picture Mode**

Choose Your Picture Mode

Home Mode, Retail Mode

Press [▲▼] to select your Picture Mode: Home Mode or Retail Mode, press [ENTER] button to confirm. If you select Retail Mode, a message appears "Are you sure you want retail mode?" Select "Yes" to continue, or select "No" to change your selection. For energy saving, we kindly suggest you select the Home Mode.

**TV Source**

Choose Your TV Source

Antenna, Cable

Press [▲▼] to select your TV Source: Antenna or Cable, press [ENTER] button to confirm. If you press [EXIT] to exit the scanning, a message appears "Please Run Channel Auto Scan", you should scan channels from the menu of Channels.

**Note:** If you are using a cable or satellite box and you have connected it to the TV using a Coaxial cable, you should select the cable option. Be sure the cable or satellite box is turned on before starting the channel scan. If you use a cable or satellite box connected to A/V, Component or HDMI, you don't need to scan for channels.

### 9 HELP TOPICS

When there is something wrong with your TV, you can try turning off the TV and restarting it. You can also refer to the following chart for problem and solution tips. If the problem cannot be resolved, please contact Hisense for additional assistance 1-888-935-8880.

SYMPTOMS	POSSIBLE SOLUTIONS
<b>No sound or picture</b>	<ul style="list-style-type: none"> <li>• Confirm power cord is plugged into the AC outlet and the AC outlet is getting electricity.</li> <li>• Attempt to power on unit using the power button on both the TV and the Remote.</li> </ul>
<b>Picture is normal, but no sound</b>	<ul style="list-style-type: none"> <li>• Check the volume settings.</li> <li>• Check if Mute mode is set "on".</li> </ul>
<b>I have connected an external source to my TV and I get no picture and/or sound.</b>	<ul style="list-style-type: none"> <li>• Check for the correct output connection on the external source and for the correct input connection on the TV.</li> <li>• Make sure you have made the correct selection for the input mode for the incoming signal.</li> </ul>
<b>Sound but no picture or black and white picture.</b>	<ul style="list-style-type: none"> <li>• If black and white picture first appear TV from AC outlet and replug after 60 seconds.</li> <li>• Check Color Setting if picture is black and white.</li> </ul>
<b>Sound and picture distorted or appear wavy.</b>	<ul style="list-style-type: none"> <li>• An electrical appliance may be affecting TV set. Turn off any appliances, if interference goes away, move appliance farther away from TV.</li> <li>• Insert the power plug of the TV set into another power outlet.</li> </ul>
<b>Sound and picture is blurry or cuts out momentarily.</b>	<ul style="list-style-type: none"> <li>• If using an external antenna, check the direction, position and connection of the antenna.</li> <li>• Adjust the direction of your antenna or reset or fix the channel.</li> </ul>
<b>[CHA/TV] don't work when I set the Channel to Cable? They work with the Air setting?</b>	<ul style="list-style-type: none"> <li>• After switching to Cable, please auto program the channels. The TV will "remember" all the channels then the TV will allow you to air the channels with [CHA/TV] buttons.</li> </ul>
<b>Remote control does not work.</b>	<ul style="list-style-type: none"> <li>• Confirm that TV still has power and is operational.</li> <li>• Change the batteries in the remote control.</li> <li>• Check if the batteries are correctly installed.</li> <li>• Clean the front of the remote control (LED window).</li> <li>• If using a universal remote, be sure to select the TV mode on the remote.</li> <li>• If the remote still does not work: <ul style="list-style-type: none"> <li>-Remove and reinstall the batteries correctly to reset the remote or install new batteries.</li> <li>-Press the Power button to turn on the TV. With a universal remote if you have reset or changed the batteries you will need to reprogram the remote for the other units.</li> <li>-Check if there is obstruction between the remote control and the TV.</li> </ul> </li> <li><b>TIP:</b> If you have a digital camera / camera phone, you can aim the front of the remote at camera lenses (at this time, the camera should set on camera mode, not play mode). Observe the camera screen while pressing a button on the remote control; you should see flashing light on the screen. If there is no light observed, the remote control is not working. You need to repair or replace the remote control.</li> </ul>