

Hisense

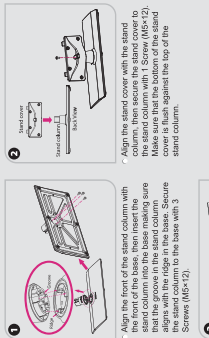
K20D Series QUICK SETUP GUIDE

1 ACCESSORIES LIST

- User Manual
- Quick Setup Guide
- Screw (MS × 12) × 6
- Spacer × 4
- Batteries: AAA × 2
- Remote Control
- Stand
- (MS × 50mm) × 4

2 INSTALLING THE STAND

Follow the illustrations below to complete the installation steps.

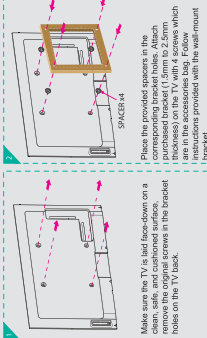


NOTE

Product image is only for reference, actual product may differ. Please refer to the actual product image for details. Please do not use any tools to scratch the TV screen, and avoid using any sharp objects to scratch the TV screen.

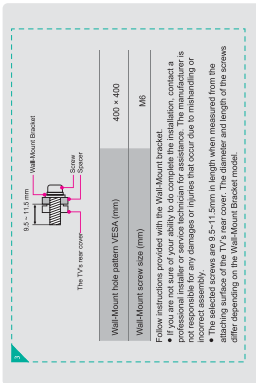
3 INSTALLING A WALL-MOUNT BRACKET

If you want to attach the TV to a wall-mount bracket (not provided), you should first remove the stand if it is pre-attached.

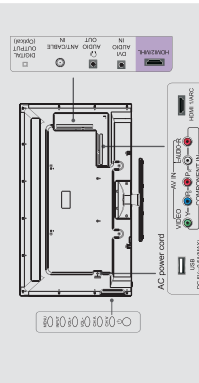


NOTES

These screws will only fit the back cover mount.



4 BUTTONS AND CONNECTORS

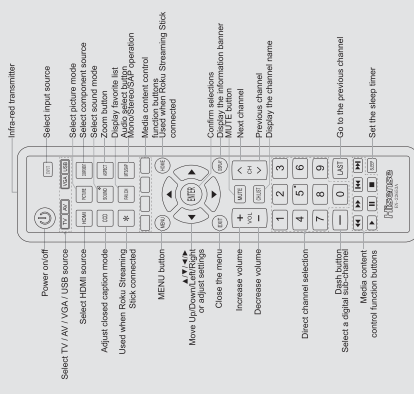


Item	Description
MENU	Display the on-screen menu to setup your TV's features.
INPUT	Select the different input signal sources.
VOL- / TV	Select the volume.
(Power button)	Turn on the TV or put the TV in standby mode. Press and hold the power button to turn the TV on in standby mode. Unplug the power cord to disconnect power.
ANTICABLE	Connect an antenna or cable TV to this jack.
HDMI	HDMI (High-Definition Multimedia Interface) provides an uncompressed, all digital audio/video interface between the TV and other HDMI devices. All HDMI inputs can support DVI video by using a DVI-to-HDMI cable. The DVI audio should be connected to DV/AUDIO IN.
COMPONENT IN	Connect the TV to other AV devices with component (YPbPr) video and audio output jacks.
AV IN	Connect to the composite video and audio (L/R) output jacks on external video devices.
DVI AUDIO IN	Connect to a PC or other devices with a 3.5mm TRS jack.
.../AUDIO OUT	Connect headphone or analog sound system using 3.5mm TRS jack. (19P-stereo mini to L/R phone-not provided).
DIGITAL OUTPUT	Connect an audio amplifier in this jack.
USB	Port for Digital Media Player and for software update.

5 REMOTE CONTROL

NOTE

The TV Remote is not available for this model.



CHANGE THE BATTERIES

- Slide the back cover to open the battery compartment of the remote control.
- Insert two AAA-size batteries. Make sure to match the (+) and (-) signs of the batteries with the (+) and (-) signs indicated in the battery compartment.
- Close the battery compartment cover.



6 TV CONNECTORS

Check the jacks for position and type before making any connections. Loose connections can result in image or color problems. Make sure that all connections are tight and secure.

- ▶ ANT: Connect an outdoor VHF/UHF antenna.



8 TURNING THE TV ON FOR THE FIRST TIME

Menu Language



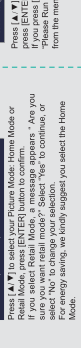
Picture Mode



Time Setting



TV Source



When you use a cable or satellite box, you should select the cable option. If you use a cable or satellite box, you should select the cable option. If you use a cable or satellite box, you should select the cable option.

9 HELP TOPICS

When there is something wrong with your TV, you can try turning off the TV and restarting it. You can also refer to the following chart for problem and solution topics.

SYMPTOMS	POSSIBLE SOLUTIONS
No sound or picture	<ul style="list-style-type: none"> Confirm power cord is plugged into the AC outlet and the AC outlet is getting electricity. Attempt to power on unit using the power button on both the TV and the remote. Check the volume settings. Check Mute/Standby is not "ON".
Picture is normal, but no sound	<ul style="list-style-type: none"> Check for correct output connection on the external source and for the correct input connection on the TV. Make sure you have made the correct selection for the input mode for the incoming signal.
I have connected an external source to my TV and get no picture and/or sound.	<ul style="list-style-type: none"> If black and white picture first is blank and then returns to color after 60 seconds. Check Color Setting (picture is blank and white).
Sound and picture distorted or appear wavy.	<ul style="list-style-type: none"> An electrical appliance may be affecting TV set. Turn off any appliances, if interference goes away, move appliance further away from TV. Insert the power plug of the TV set into another power outlet.
Sound and picture is blurry or cuts out momentarily.	<ul style="list-style-type: none"> If using an external antenna, check the direction, position and connection of the antenna. Adjust the direction of your antenna or that of the line to the channel.
[GMV] don't work when I set the Channel to Cable? They work with the Air setting?	<ul style="list-style-type: none"> Confirm that TV still has power and is operational. Check the channel number. Check the batteries are correctly installed. Clean the front of the remote control (LED window). Use a universal remote, be sure to select the TV mode on the remote. Check the remote control is not in standby mode. Remove and reinstall the batteries correctly to reset the remote or install new batteries. Press the Power button turn on the TV. With a universal remote if you have reset or changed the batteries check if there is an obstruction between the remote control and the TV. Check if there is a disconnection between the remote control and the TV.
Remote control does not work.	<ul style="list-style-type: none"> TIP: If you have a digital camera / camera phone, you can aim the front of the remote at camera lenses (at this time the camera should set on camera mode, not play mode). Observe the camera screen while you press the Power button. If you see the camera flash, the remote is working. If you do not see the flash, the remote control is not working. You need to repair or replace the remote control.

7 SPECIFICATIONS

Model Name	S60200C
Dimension	Without Stand: 44.4x28.3x3.1 inches (1129x697x79.3 mm) With Stand: 44.4x28.3x5.1 inches (1129x722x129.3 mm)
Weight	Without Stand: 33.1 lbs (15 kg) With Stand: 39.7 lbs (18 kg)
LCD Panel Minimum Size (diagonal)	50 inches
Audio power	8 W x 6 (30 W)
Power supply	120 V ~ 60 Hz
Receiving systems	NTSC
Digital channels	ATSC 1.0, ATSC 2.0, ATSC 3.0
Receiving channels	Digital Terrestrial Broadcast (8VSB); 2 - 69 Digital cable (QAM); 1 - 135
Tuner type	ATSC-T2-L1; ATSC-T2-L2; ATSC-T2-L3
Environmental conditions	Temperature: 41°F ~ 95°F (5°C ~ 35°C) Humidity: 20% ~ 80% RH
Operational pressure	98 kPa ~ 106 kPa (735 mmHg ~ 795 mmHg)
Connected Input	RGB: 60 Hz (640x480, 800x600, 1024x768) Y/V: 60 Hz (680 x 480 P, 720 P, 1080 I, 1080P)
HDMI Input	