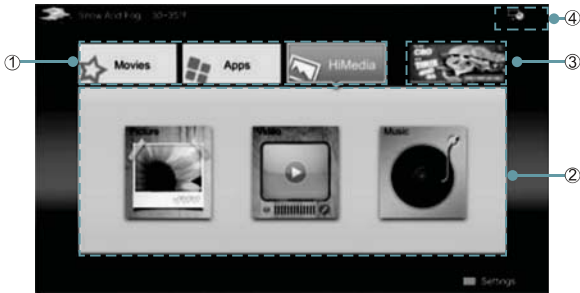


## Using the Home Menu



1. Press the [HiSmart] button to display Home menu.
2. Press [◀/▶/▲/▼] button to select the interface you want to view and press [ENTER] to enter the following description.

| No | Interface description                        |
|----|--|
| ①  | Launcher Bar (Movies/Apps/HiMedia)           |
| ②  | Functional application                       |
| ③  | Advertising                                  |
| ④  | Network (Display or set the network status.) |

3. Press [EXIT] button exit the home mode.

## Movies

### ▣ Brief introduction

Display VUDU recommend newest movies information.

### ▣ Operation introduction

Press the [◀/▶] button select the movie and press enter to confirm.

#### ✓ NOTES

For U.S. only.

## Apps

### ▣ Brief introduction

Apps contains all pre-loaded applications of the TV.

### ▣ Operation introduction

Press the [▲/▼/◀/▶] button select the app and press [ENTER] to confirm.

#### ✓ NOTES

In Cannada and Mexico, VUDU Movies/ VUDU Apps/ Pandora may not all available.

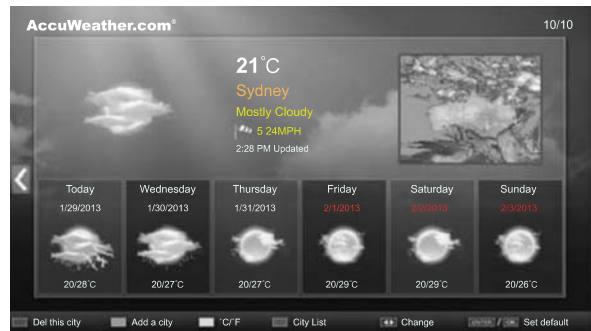
Opera and Opera Apps depend on your TV series and size.

## AccuWeather

### ▣ Brief introduction

This application provides local and international weather forecasts, world class weather radar plus up-to-date weather reports and current conditions.

### ▣ Operation instructions



1. Press the [◀/▶] buttons to move the cursor to select service items in AccuWeather screen and the [ENTER] button to confirm.
2. To use other features, press the button shown in the help bar.
3. Press the [RETURN] button to return to the upper menu, or the [EXIT] button to close the App.

## YouTube

### ▣ Brief introduction

The YouTube app allows you to watch original videos, music videos, feature length movies, previews and trailers on your TV screen. Search or browse recommendations with the TV remote.

### ▣ Operation instructions

- **To activate your YouTube account for your TV:**  
Select "Sign in" and "Settings" from the toolbar on the left side of the application, then go to [www.youtube.com/activate](http://www.youtube.com/activate) and enter the code you see on the TV screen. While you enter the code the screen should remain open, otherwise the code will no longer be valid. Once completed your account will be activated and you will be signed in.
- **To control YouTube from your tablet or smartphone:**  
Please first check if your mobile device supports YouTube TV and use the same network connection. To pair your device to the YouTube screen, you will be prompted to go to [www.youtube.com/pair](http://www.youtube.com/pair) on your mobile device. The screen guide to "Pair with TV" will appear. Enter the pairing code or enter the value of the scanned QR code on the SmartTV. While you enter the code the screen should remain open, otherwise the code will no longer be valid. Select a name for your device then click "Add TV". Once complete, the YouTube app will show that your mobile device has been paired. You can now select a video to watch on YouTube TV using your mobile device.

# Advanced Features

## VUDU Movies

### Brief introduction

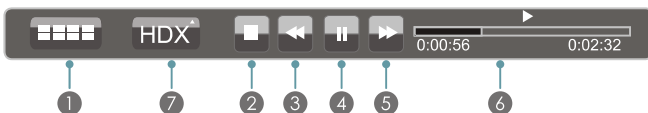
VUDU is an on-demand service that offers high-definition movies via the web.  
To enjoy movies, please register and log in to your account.

### Operation instructions

To access Vudu HD Movies: You can access the VUDU HD Movies by the following method:

1. Press the **[HiSmart]** button to display home menu.
2. Press **[◀/▶]** button to select the VUDU HD Movies icon and press **[ENTER]** to enter it, or press **[VUDU]** button to enter directly.
3. Select the Sign Up Now icon on the VUDU HD Movies interface, and press **[ENTER]** to enter.
4. Enter your email address to start your VUDU experience. (Refer to "How to Input the Email Address" on page 23.)
5. Press **[▲/▼/◀/▶]** button to move the cursor to select service items in the VUDU HD Movies home page, and press **[ENTER]** button to confirm.
6. While watching a movie, press **[ENTER]** button to display/exit the tool bar, press **[◀/▶]** button to select the function icon, and press **[ENTER]** button to confirm.
7. Press **[RETURN]** button to return the upper menu, or press **[EXIT]** button to close the menu.

#### ● Tool Bar



- 1 Press **[ENTER]** button to enter and press **[◀/▶]** button to select the chapter.
- 2 Stop playback.
- 3 Fast backward. Press **[ENTER]** to select the backward speed. You can press **[◀◀]** button to achieve the function.
- 4 Play/Pause. You can press **[▶||]** button to play/pause directly when there is no control bar on the screen.
- 5 Fast forward. Press **[ENTER]** button to select the forward speed. You can press **[▶▶]** button to achieve the function.
- 6 Progress bar. The progress bar when playing.
- 7 Press **[ENTER]** button to select the movies quality HDX, HD or SD.

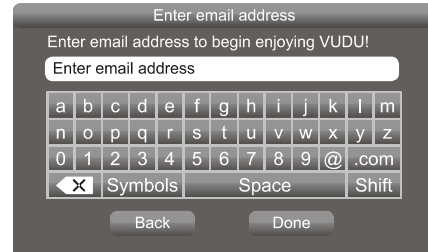
### How to Input the Email Address

1. Press **[▲/▼/◀/▶]** button to move the cursor to the address bar and press **[ENTER]** button to confirm.

2. Press **[ENTER]** button to display the keyboard.

There are some shortcuts on the bottom of the keyboard so that you can input part of the address often used directly.

Other keys are used as the keyboard of your computer.



3. Press **[▲/▼/◀/▶]** button to move the cursor to the characters you want to select and then press **[ENTER]** button to confirm.

If you want to delete one character, move the cursor to Back key **<X>** and press **[ENTER]** button to confirm.

4. Move the cursor to Done key and press **[ENTER]** button to confirm if you have completed the address input. Then the new address will appear on the address bar.

## VUDU Apps

### Brief introduction

The applications platform for connected TVs.

- VUDU Apps provides customers with access to a wide range of Internet services and applications including streaming video, music on demand, photo browsing, social networking and more.
- VUDU Apps supports the development of responsive apps designed specifically for use on home HD televisions.
- VUDU Apps uses a unique, cloud-based architecture optimized for consumer electronics devices, including delivering the latest applications to consumers without the need for software downloads or frequent firmware updates.

### Operation instructions

You can access the VUDU Apps by the following methods:

1. Press the **[HiSmart]** button to display home menu.
2. Press **[◀/▶]** button to select the VUDU Apps icon and press **[ENTER]** to enter it.
3. Press **[◀/▶/▲/▼]** button to select the widget you want to access, and press **[ENTER]** to enter it.
4. You can press **[RETURN]** to return the upper menu or press **[EXIT]** button to close the Widgets display.

## Netflix

Netflix unlimited membership required.

### ▣ Brief introduction

Instantly watch thousands of TV episodes & movies streaming over the Internet from Netflix. Unlimited membership required.

#### 📝 NOTES

- For more information on Netflix visit <http://www.netflix.com/help> or login to your Netflix account and click "Help" at the top of the page.
- Picture quality depends on the network speed and original bit rate.
- Illustrations are examples and may differ from the actual Netflix screens. The display and operations may change as a result of a software update. Use Netflix without configuring a proxy server. Part or all of Netflix may not be available when connecting to the Internet via a proxy server.

### ▣ Operation instructions

1. Press the [HiSmart] button to display home menu.
2. Press [◀/▶] button to select the Netflix icon and press [ENTER] to enter it, or press [NETFLIX] button to enter Netflix website directly.
3. Input Email and Password in following window to sign in. (Refer to "How to Input the Email Address" on page 23)
4. Press [▲/▼/◀/▶] button to move the cursor to select service items in the Netflix home page, and [ENTER] button to confirm.
5. While watching a movie, press operational buttons to control the movie.
6. Press [RETURN] button to return the upper menu, or press [EXIT] button to close the menu.

## Vimeo

### ▣ Brief introduction

Vimeo App provides a variety of HD video. All these video are mainly divided into two parts: Featured Video and Categories Video which includes Activism & Non Profits, Animation & Motion Graphics, Art, Comedy, Education & DIY, Everyday Life, Experimental, Films, HD, Music, Products & Equipment, Science & Tech, Sports and others.

When you sign in this App, you can bookmark your favorite movie and watch the movie last watched.

### ▣ Operation introduction

1. You can choose the movie you like to watch in Featured and Categories in home page.
2. If you want to sign in Vimeo, please choose Setting.
3. After signing in Vimeo, you can save your favorite video to My Stuff or Watch Later.
4. Choose Search to search the name of movie or music you love.
5. To use other features, press the button showed in the help bar.
6. Press [RETURN] button to return to the upper menu, or [EXIT] button to close the App.

## Pandora

### Brief introduction

Pandora is a personalized radio service that streams music on your TV. Just start with the name of one of your favorite artists, songs, comedians, or composers and Pandora will create a custom station that plays similar tracks. Pandora features hundreds of music and comedy genre stations. Create up to 100 stations so you can easily switch between favorites.

For enjoying more movies, please register and log in to your account.

1. Press the **[HiSmart]** button to display home menu.

### Operation introduction

2. Press **[◀/▶]** button to select the Pandora icon and press **[ENTER]** to enter it.
3. Input Email and Password in following window to sign in. (Refer to "How to Input the Email Address" on page 23)
4. Press **[▲/▼/◀/▶]** button to move the cursor to select service items in the Pandora home page, and **[ENTER]** button to confirm.
5. Press **[RETURN]** button to return the upper menu, or press **[EXIT]** button to close the menu.

## Twitter

### Operation introduction

1. Press the **[HiSmart]** button to display the home menu.
2. Press **[◀/▶]** button to select the Twitter icon and press **[ENTER]** to enter it.
3. Input Email and password in the following window to sign in.
4. Press **[▲/▼/◀/▶]** button to move the cursor to select service items in the Twitter home page, and **[ENTER]** button to confirm.
5. Press **[ENTER]** button to return the upper menu, or press **[EXIT]** button to close the menu.

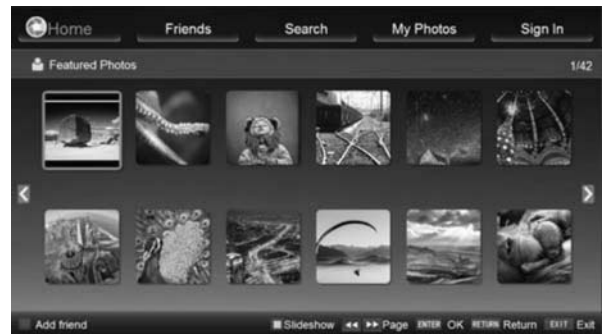
## Picasa

### Brief introduction

With Picasa you can explore featured photos in Google Picasa Web Album, also you can search your favorite photos in Google Picasa Web Album. If you have already had a Google Picasa account, you can enjoy your private photos stored in Google Picasa Web Album.

### Operation introduction

1. Press the **[HiSmart]** button to display home menu.
2. Press **[◀/▶]** button to select the Picasa icon and press **[ENTER]** to enter it.



3. Press **[▲/▼/◀/▶]** button to move the cursor to select service items in Picasa screen and **[ENTER]** button to confirm.
4. To use other features, press the button showed in the help bar.
5. Press **[RETURN]** button to return to the upper menu, or **[EXIT]** button to close the App.



# Advanced Features

## NOTES

Adobe Flash is not supported on the Opera browser; therefore, some videos may not play.

## Opera

### Brief introduction

The opera browser allows you to browse any URL, edit or delete folders, add bookmarks and select websites from the "Favorites" folder.

### Operation instructions

#### How to enter the Opera Browser

1. Press the [HiSmart] button to display the home menu.
2. Press the [◀/▶/▲/▼] buttons to select the opera icon and press the [ENTER] button to enter it.
3. Then the default interface will appears on the screen. There are some function icons on the bottom of the screen:



#### The function of the buttons on the screen:

1. Main page.  
Move the cursor to the icon and press the [ENTER] button to show the main page.
2. Back to previous page.  
Move the cursor to the icon and press the [ENTER] button to return to the previous viewed web page.
3. Forward to next page.  
Move the cursor to the icon and press the [ENTER] button to go forward to the previous viewed web pages.
4. Refresh page.  
Move the cursor to the icon and press the [ENTER] button to refresh the current page.
5. Bookmark manager.  
Move the cursor to the icon and press the [ENTER] button to enter the favorite folder.
6. Add a bookmark.  
Move the cursor to the icon and press the [ENTER] button to add the website to the favorite folder.
7. Help.  
Move the cursor to the icon and press the [ENTER] button for help.
8. Address bar.  
Input the website you want to view.
9. Go to the website.  
Move the cursor to the icon and press the [ENTER] button to search the website.

- 10 Exit Browser.

Move the cursor to the icon and press the [ENTER] button to close the page.

#### The function of buttons on the remote control

| Key         | Operation   |
|-------------|---|
| Exit        | Exit Opera Browser.   |
| Return      | Back to previous page or exit current page; Cancel pop dialoge or soft keyboard |
| ▲/▼/◀/▶     | Up/Down/Left/Right.   |
| CH ▲/CH ▼   | Page Up/Page Down.  |
| Guide       | History of viewed pages.  |
| RED         | Back to previous viewed web page.   |
| Green       | Forward to previous viewed web page.  |
| Yellow      | Open marked page.   |
| Blue        | Favorite marker.  |
| ASPECT      | Zoom in or Zoom out.  |
| Menu        | Toolbar   |
| Enter       | Enter   |
| VOL▲ / VOL▼ | Volume Control  |
| Mute        | Mute  |

#### How to Input a New Address

1. Press the [▲/▼/◀/▶] buttons to move the cursor to the address bar.
2. Press the [ENTER] / [RETURN] buttons to display / close the keyboard.  
There are some shortcuts on the bottom of the keyboard so that you can input part of the address often used directly. Other keys are used as the keyboard of your computer.



# Advanced Features


3. Press the [▲/▼/◀/▶] buttons to move the cursor to the characters you want to select and then press the [ENTER] button to confirm.  
If you want to delete one character, move the cursor to Back key and press the [ENTER] button to confirm. Or if you want to re-enter all the characters, move the cursor to Reset key and press the [ENTER] button to confirm.
4. Move the cursor to Enter key and press the [ENTER] button to confirm to enter the website.  
Then the new address will appear on the address bar.

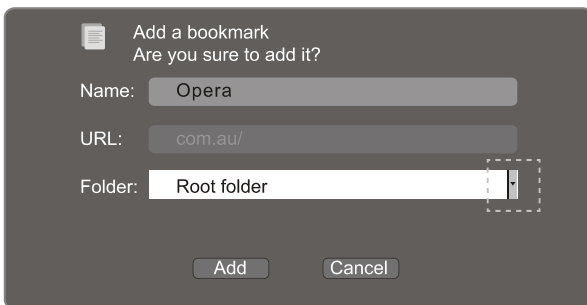
## NOTE

The browser supports English language websites.

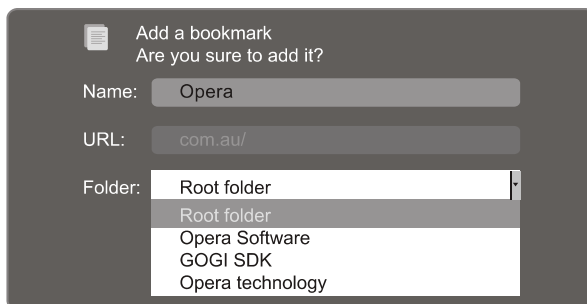
### ● How to Add a Bookmark

If you want to find the often viewed website from the favorite folder, you can follow the steps to add it to the folder.

1. First, input the address on the address bar and enter it.
2. Press the [▲/▼/◀/▶] buttons to move the cursor to the  and press the [ENTER] button to confirm.  
The menu will pop up on the screen.



3. Press the [▲/▼/◀/▶] buttons to move the cursor to the icon marked with dashed box on the right screen. Then press the [ENTER] / [▲/▼] buttons to confirm to display the folders.

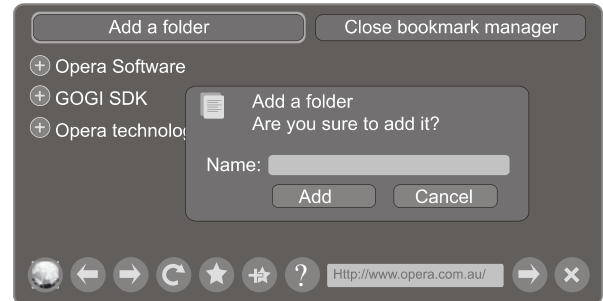


4. Press the [▲/▼] buttons to select the folder you want to add the bookmark to. And press the [ENTER] button to confirm.
5. Move the cursor to the Add button and then press the [ENTER] button to confirm. If you do not want to add the book mark, move the cursor to the Cancel button and press the [ENTER] button to confirm.

### ● How to Add a Folder


You can add a folder to the favorite as follows:

1. Move the cursor to the  icon and press the [ENTER] button to confirm. The menu will pop up on the screen.



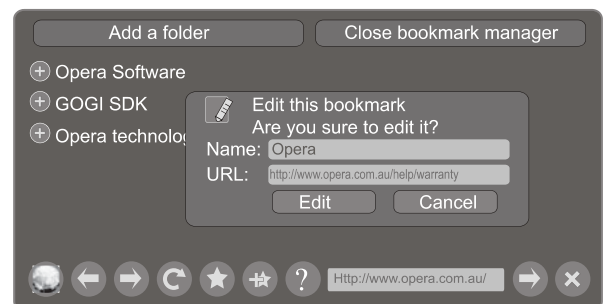
2. Move the cursor to "Add a folder" button and press the [ENTER] button to confirm.  
A pop-up menu appears on the screen.
3. Move the cursor to Name bar and press the [ENTER] button to confirm. Follow the steps 2 to 4 in "How to Input the New Address" to input the name.
4. Move the cursor to Add button and press the [ENTER] button to confirm and the new folder has been added.

### ● How to Edit/Delete a Folder/Bookmark

1. Move the cursor to the  icon and press the [ENTER] button to confirm. The menu will pop up on the screen.
2. Move the cursor to the folder /bookmark directly and there will be two icons on the right of it. Move the cursor to one of the icons and press the [ENTER] button to display a pop-up menu.

: Edit button.

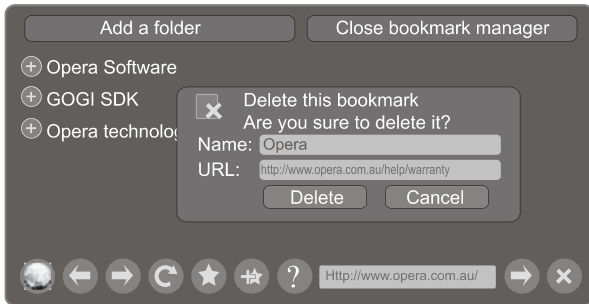
- 1). Move the cursor to the Name/URL bar and press the [ENTER] button to confirm. Follow the steps 2 to 4 in "How to Input a New Address" to edit it.



- 2). Move the cursor to the "Edit" button, then press the [ENTER] button to confirm and the folder/bookmark will be saved.

: Delete button.

Move the cursor to the Delete button and press the **[ENTER]** button to confirm. Then the folder/bookmark will be deleted from the favorite folder.

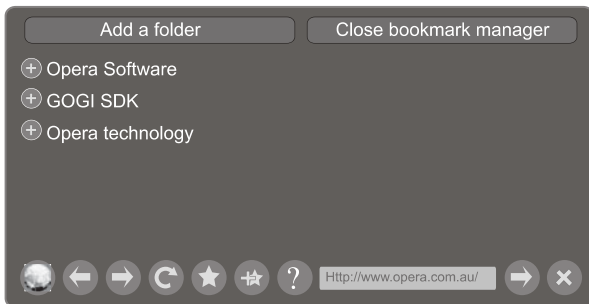


## NOTE

The Name will appear on the pop-up menu for the folder.

### How to select the Website from the favorite folder

1. Move the cursor to the icon and press the **[ENTER]** button to confirm. The menu will pop up on the screen.



2. Move the cursor to the folder name and press the **[ENTER]** button to confirm.

The websites in the folder will appear in the following lines.

3. Move the cursor to the website you want to view and press the **[ENTER]** button to confirm.  
If the website is in the root folder, you can select it directly, and skip step 2.

### How to exit the manager

Move the cursor to the Close bookmark manager icon and press the **[ENTER]** button to confirm.

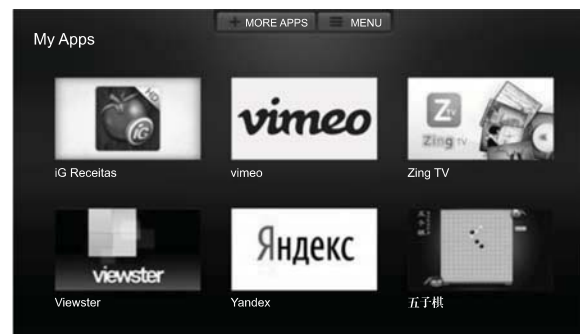
## Opera Apps

### Brief introduction

The user can browse and launch any application from the Opera App store dashboard. These applications are based on the Opera Devices SDK and are displayed in a layout optimized for widescreen television. In the Opera TV Store, there are more than 100 high-quality, HTML5-powered TV apps available. You can choose any apps you like and either use them online or add them to "My Apps" for easy use. "My Apps" is located under the "MORE APPS" section.

### Operation instructions

1. Press the **[HiSmart]** button to display the home menu.
2. Press the **[▲/▼/◀/▶]** buttons to select the Opera Apps icon and press the **[ENTER]** button to enter My Apps interface. You can select the applications you want to enter and press the **[ENTER]** button to confirm.



3. Press the **[RETURN]** button to return to the upper menu or press the **[Exit]** button to close the apps.

### How to add more apps

1. Press the **[▲/▼]** buttons to select the **"MORE APPS"** button on the top of the screen and press the **[ENTER]** button to enter it.

In the More Apps' subpage, the application is classified by All categories, New, Popular, Watch, Listen, Play, Socialize, Shop, Read, Use.

2. Press the **[◀/▶]** buttons to select the classification and press the **[▼]** button to enter.
3. Press the **[▲/▼/◀/▶]** buttons to select the applications which you want to install and press the **[ENTER]** button to enter the installing interface.
4. Press the **"ADD TO MY APPS"** button to install the applications or press the **"OPEN"** button to enter the application interface directly.

If the applications have been installed, they will be shown in My Apps interface.

### How to remove the installed apps