

Getting Started With Setting Up Your TV

- You can attach your TV to your LAN by connecting the LAN port on the back of your TV to an IP Sharer which is connected to an external modem. Use a LAN cable for the connection. See the diagram below.

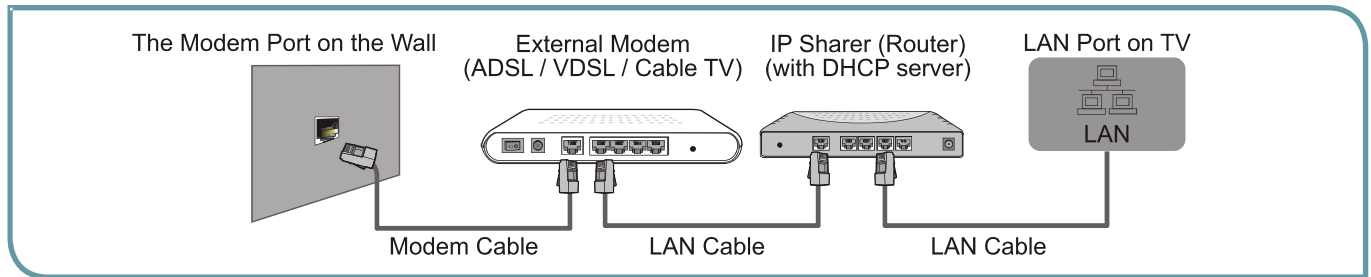


Figure 18. Connect a LAN port on the TV to an IP sharer

- Depending on how your network is configured, you may be able to attach your TV to your LAN by connecting the LAN port on the back of your TV directly to a network wall outlet with a Cat 5 cable. See the diagram below. Note that the wall outlet is attached to a modem or router elsewhere in your house.

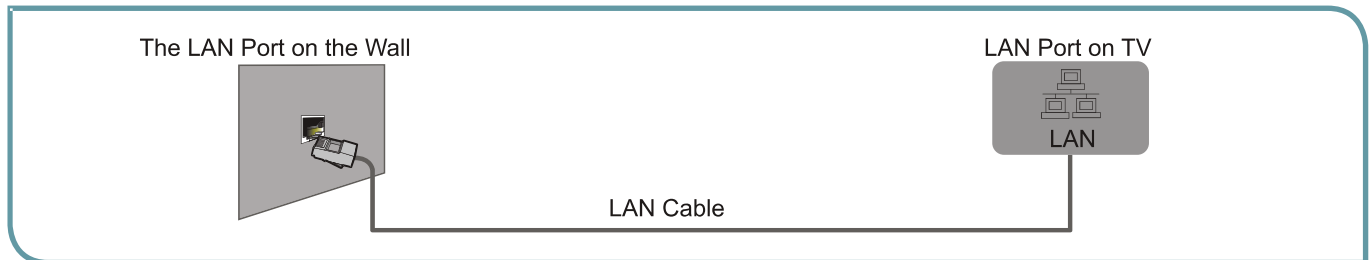


Figure 19. Connect a LAN port on the TV to a network wall outlet

If you have a Dynamic Network, you should use an ADSL modem or router that supports Dynamic Host Configuration Protocol (DHCP). Modems and routers that support DHCP automatically provide the IP address, subnet mask, gateway, and DNS, so you don't have to enter them manually. Most home networks are Dynamic Networks.

Some networks require a Static IP address. If your network requires a Static IP address, you must enter the IP address, subnet mask, gateway, and DNS values manually on your TV's Cable Setup Screen when you set up the network connection. To get the IP address, subnet mask, gateway and DNS values, contact your Internet Service Provider (ISP).

NOTE

You can use ADSL modems that support DHCP if your network requires a static IP address. ADSL modems that support DHCP also let you use static IP addresses.

Using Different Remotes to Control Your TV

You can use the following types of remotes to control your TV:

- 'Merlin', the smaller Bluetooth-enabled Remote that came with your TV
- The Standard IR-based Remote (This is the larger remote that came with your TV).
- An IP Remote (not included)

NOTE

In order to ensure that there are no performance issues to control your TV, we recommend that you only use one of the three remotes that are listed. We cannot guarantee that all Universal Remotes will work with your TV.

About the Bluetooth-enabled and Standard Infrared-based Remote Controls

Your **VIDAA Smart TV** comes with two remote controls. You have the option of using the standard infrared-based remote (Model EN-33927A) or the smaller Bluetooth-based remote (Model ERF6C11) known as 'Merlin.'

If you would like to control your TV from up to 10 meters (32 feet) away, speak commands and other interactive functions, then we recommend that you use the Bluetooth-based remote control. Once you pair this remote to your TV, you will be able to enjoy these conveniences.

Using 'Merlin' the Bluetooth-based Remote Control

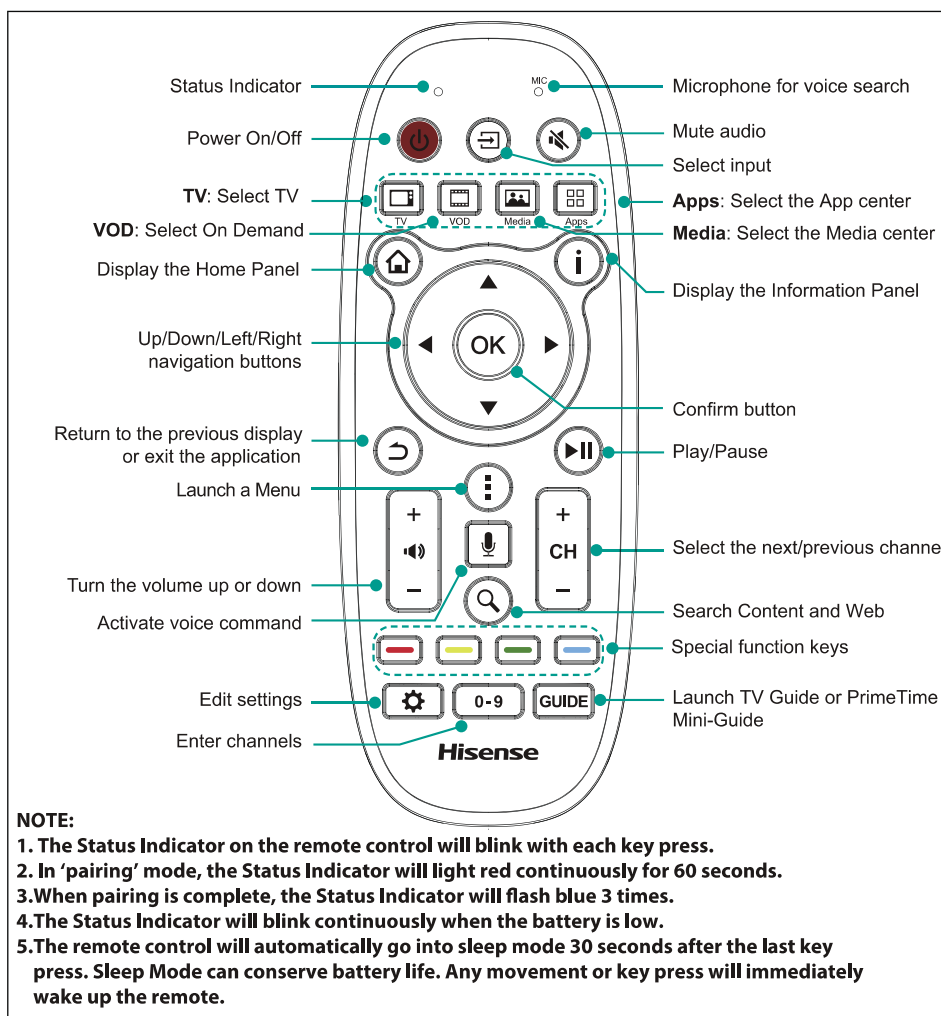


Figure 20. 'Merlin' the Bluetooth Remote Control

Getting Started With Setting Up Your TV

LED Status Indicator Lights

Led Color	Description
Blue	<ul style="list-style-type: none"> When pairing is complete, the blue LED will flash 3 times. The blue LED will blink with each button press.
Red	<ul style="list-style-type: none"> In 'pairing' mode, the red LED will light continuously for 60 seconds. The red LED will blink when the battery is low. The red LED will blink with each button press if the Bluetooth-enabled remote is not paired with the TV.
Sleep mode	<ul style="list-style-type: none"> The remote control will automatically go into 'Sleep' mode 30 seconds after the last button press. 'Sleep' Mode can conserve battery life. Any movement or button press will immediately wake up the remote.

Using the Standard IR-based Remote Control

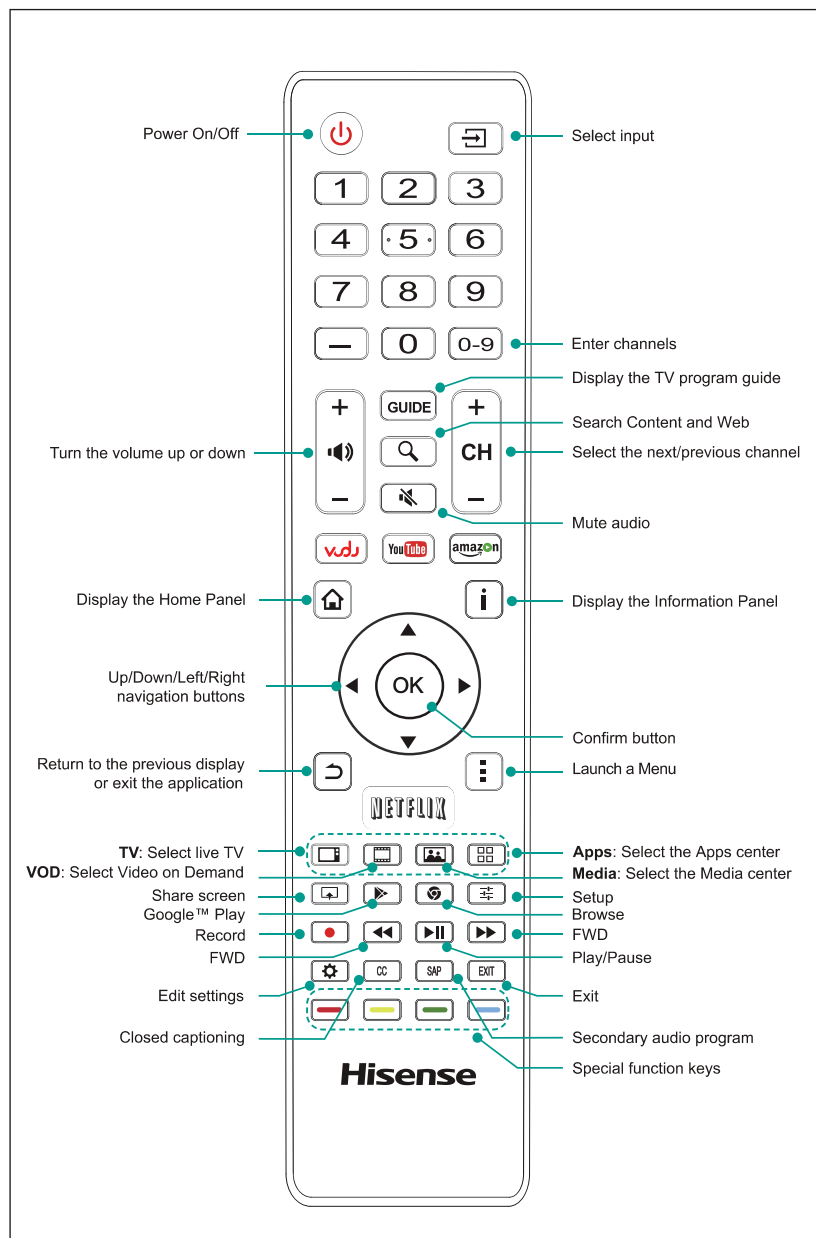


Figure 21. Standard IR-based Remote Control

Using an IP (Internet Protocol) Remote

You can use your personal device (such as a mobile phone) as an IP Remote to control your TV.

To set up your device as an IP remote:

1. Make sure that the TV is connected to a wireless home network. The phone will use your wireless home network as a way to communicate to your TV.
2. Using your Smart Phone or tablet, download the **Hisense AnyMote** app from the Google Play Store.
3. On the TV, go to **Settings > Personal > Manage IP remotes**.

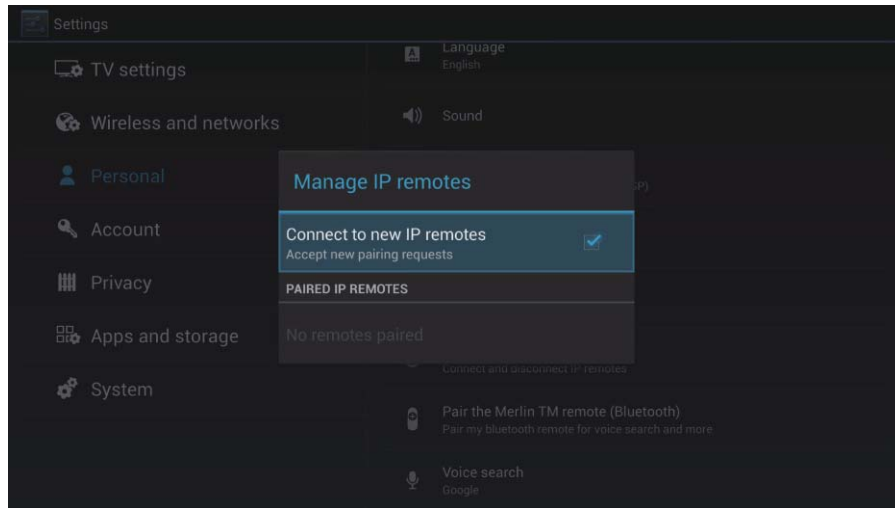


Figure 22. Manage IP remotes window

4. Check the **Connect to New IP Remotes** box.
5. Open the app on your phone and follow the steps to complete the setup.

Putting Batteries in 'Merlin' the Bluetooth Remote Control

1. To open and lift off the battery cover, push the latch in the direction of the up arrow.
2. Insert two AA size batteries.
Make sure to match the (+) and (-) ends of the batteries with the (+) and (-) ends indicated in the battery compartment.
3. Close the battery cover.

Do not expose the batteries to excessive heat (such as sunshine, fire or other sources).

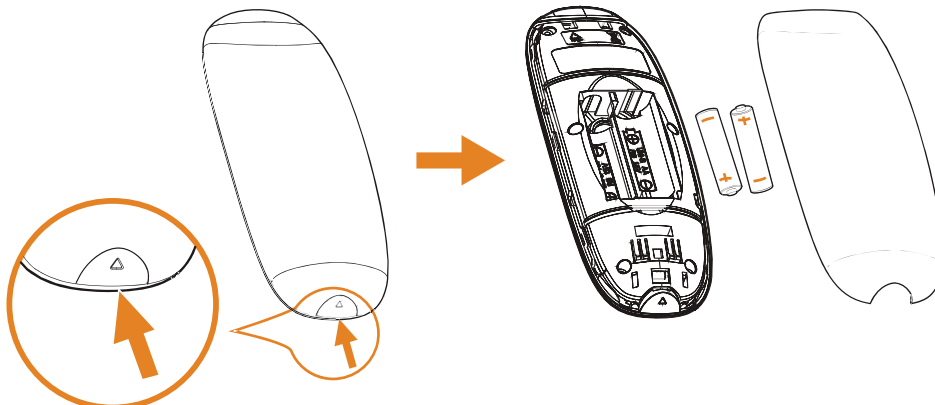


Figure 23. Putting batteries in the Bluetooth remote

Putting Batteries in the Standard Infrared Remote Control

1. To open and lift off the battery cover, push the latch (located on the back of the remote) in the direction of the arrow.
2. Insert two AAA size batteries.
Make sure to match the (+) and (-) ends of the batteries with the (+) and (-) ends indicated in the battery compartment.
3. Close the battery cover.

Turning the TV On for the First Time

The **Setup Wizard** appears the first time you turn on the TV. It guides you step-by-step through the initial setup and configuration of your television.

Steps that the Setup Wizard Prompts You to Complete

- Choosing your Language
- Accepting the End-User License Agreement
- Pairing your Bluetooth Remote Control
- Choosing your TV Environment
- Selecting your Network Connection
- Accepting Google Terms of Service
- Logging into your Google account
- Setting the Date, Time and Time Zone
- Setting the Country and Postal/Zip Code
- Setting up Your TV for TV Programming

To get started with the setup process:

1. Press the **[POWER]** button to turn on your TV.

The **Welcome** page of the Setup Wizard displays and prompts you to answer questions.

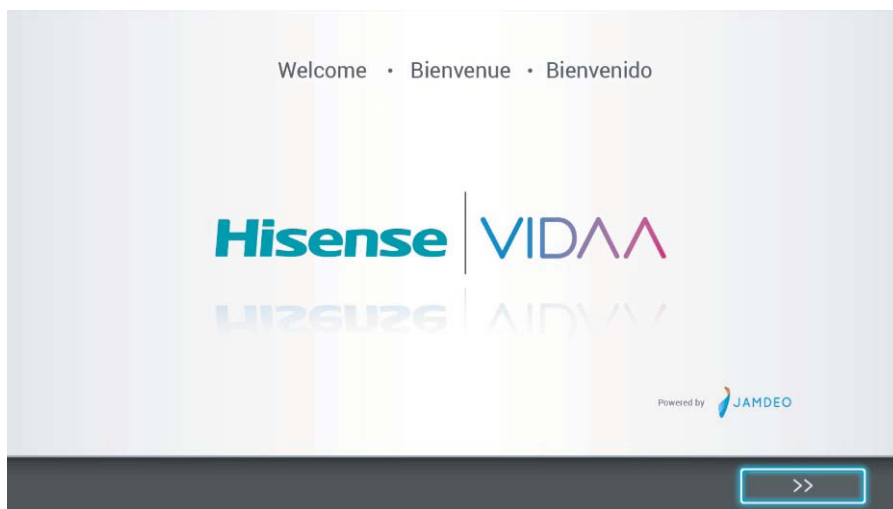


Figure 24. Welcome page

2. Press the **[Navigation]** button [**▲/▼**] to select your language: English, Spanish or French.
3. Press the **[OK]** button on your remote to confirm your selection.

Getting Started With Setting Up Your TV



Figure 25. Language page

4. Select **Next**.

The **End User License Agreement** page displays.

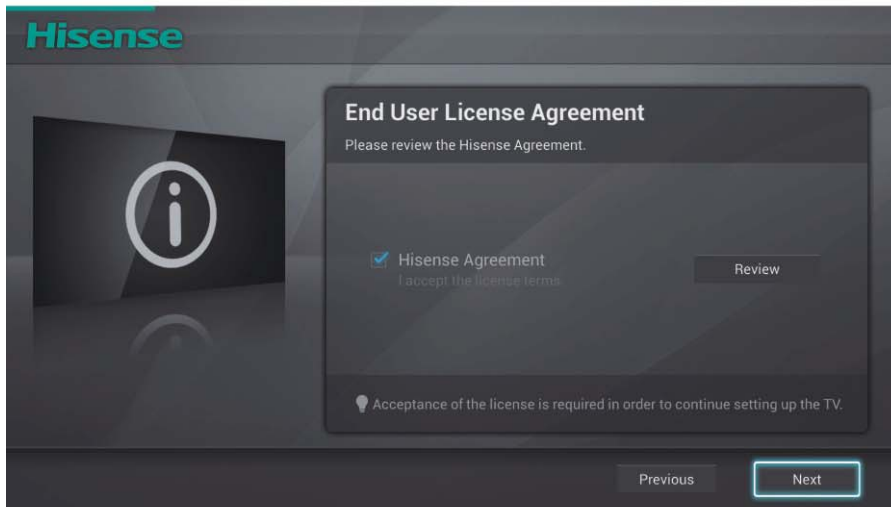


Figure 26. End User License Agreement page

5. Press the **[OK]** confirmation button on the remote to accept the license terms and click **Next**.
The **Remote Control** page displays and prompts you to pair your remote.

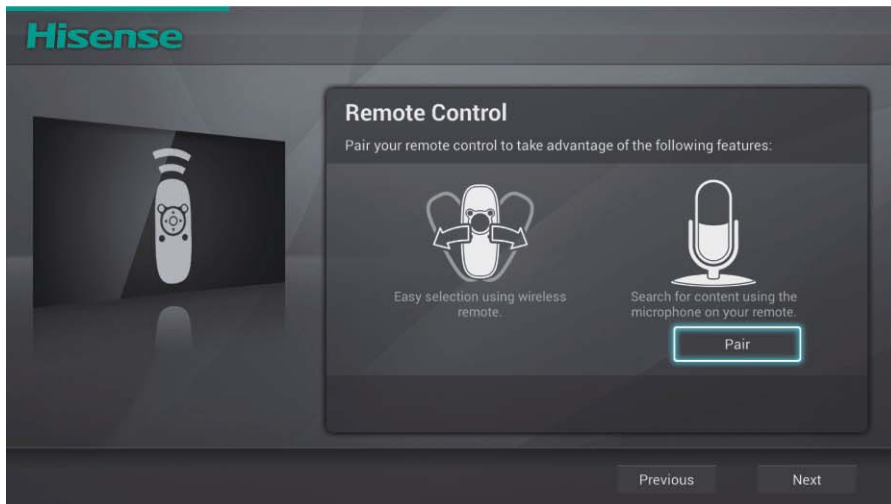


Figure 27. Remote Control page

Getting Started With Setting Up Your TV

6. Select **Pair** and then click on **Next** to move to the next page. The **Remote Control Pairing: What to Expect** page displays and prompts you to press two buttons at the same time and release them when the red LED turns on.

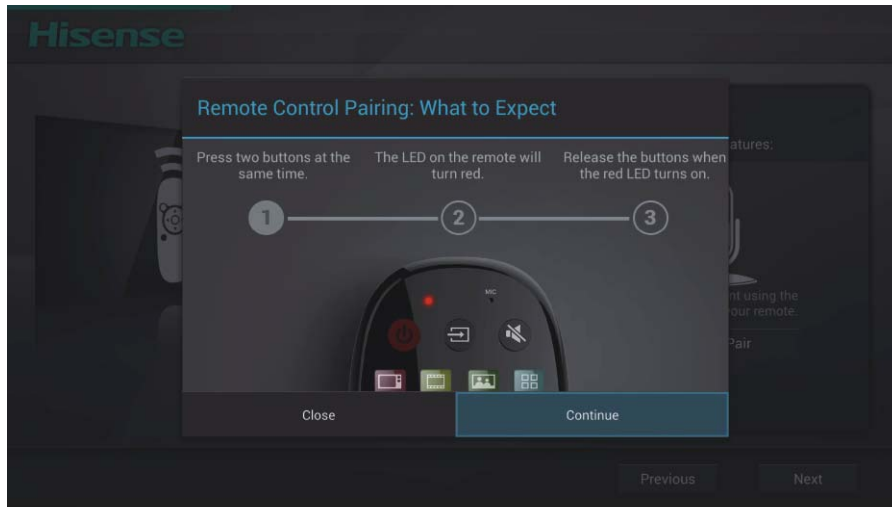


Figure 28. Remote Control Pairing: What to Expect page

7. Press the **[Red]** button (at the bottom of the remote) and the **[OK]** button simultaneously and select **Continue**.

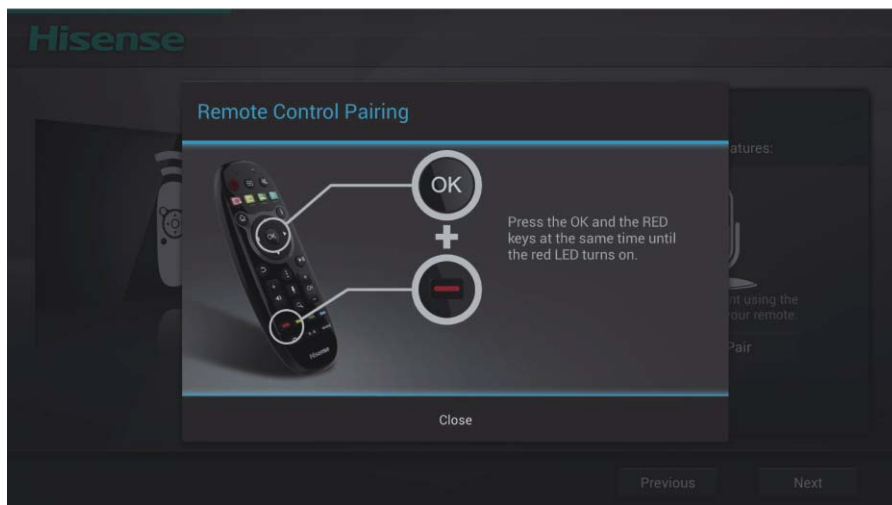


Figure 29. Remote Control Pairing page

The blue LED on the remote control will flash three times when the pairing is successfully completed. When this occurs, a confirmation page displays. At this point, you can now use your **[AirMouse]** and **[Voice Search]** button.

8. Choose your **TV Environment** and select **Next**.

NOTE

The only time **Retail Environment** should be selected is if you are a store employee who needs to set up this TV to demo for prospective buyers..

Getting Started With Setting Up Your TV



Figure 30. TV Environment page

9. Select the Network Connection that you prefer to use and continue to move to the remaining pages of the Setup Wizard.



Figure 31. Network Connection page

Using the Air Mouse Feature

The **Air Mouse** works wirelessly via the Bluetooth-enabled remote. The motion sensor within the remote detects when you point and click on the screen so that you can control your TV.

To use the **Air Mouse**:

1. Shake the Bluetooth remote from side to side.
2. Depending on the task that you want to perform, click the **[Navigation]** or **[Confirmation]** button on the remote.

Using the Voice Search Feature

The **Voice Search** feature works wirelessly via the Bluetooth-enabled remote. Once you have paired your Bluetooth-enabled remote control, it will support the **Air Mouse** and **Voice Command** features.

To use **Voice Search**:

1. Press and release the **[Voice Search]** button on the remote control when 'Speak Now' appears on the screen.

A **Welcome to Voice Search** window appears the first time. You can go through the tutorial or select **Skip tutorial**.

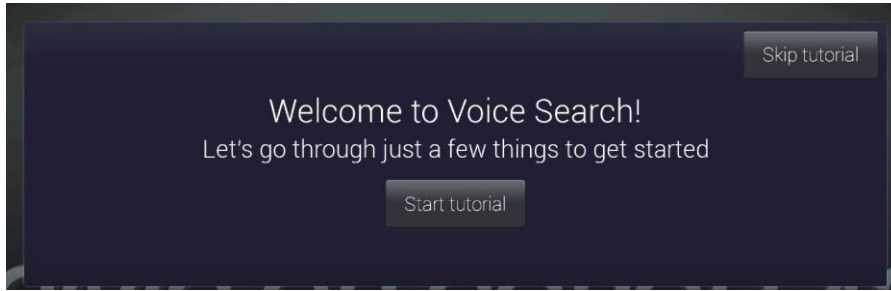


Figure 32. Welcome to Voice Search window

2. Begin speaking into the microphone on the remote control. The **Status Indicator** LED turns red when the microphone receives your voice command and a 'Working' message appears.

Choosing Voice Search Settings

You can enable certain voice search settings based on your preference.

To enable your voice search settings:

1. Press the **[Home Panel]** button on the remote.
2. From the Shortcuts Bar go to **Settings > Personal > Voice Search**. The **Voice Search** settings window displays.
3. Make your selection from the list of options.
 - Language
 - Block offensive words

Overview

The **Home Screen Panel** is where you will always locate the icons to access the four Smart TV centers: **TV**, **On Demand**, **Media Center**, and **App Center**. You can also access the **Screen Share Center** and **Show** or **Hide all inputs** from this location.

The **Home Screen Panel** contains a **Shortcuts Bar** to provide you quick access to **Google Search**, **Prime Time**, **Chrome** and **Settings**.

For a description of these features, go to the '*Home Panel and Shortcuts Bar Features*' section.

Once you have selected a particular area from which to view content, you can view more information about it by accessing the **Information Panel**.

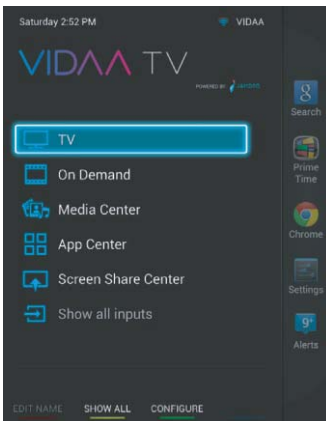



Figure 33. Home Panel

Accessing the Home Panel

To access the **Home Panel**:

1. Press the **[Home Panel]** button  on your remote control.
The panel appears on the left side of the screen.
2. Press the **[Navigation]** button on your remote to make your selection.
The selection launches on your TV.

Home Panel and Shortcuts Bar Features

TV

TV enables you to view live broadcast TV from your local provider.

On Demand

On Demand is where you can access the applications for Play Movies & TV, YouTube, Crackle, Vudu, Amazon Instant Video and Netflix.

Media Center

The **Media Center** is a central location for you to view photos, music and other types of content from your personal devices or Cloud accounts.

App Center

The **App Center** enables you to find, manage and launch applications.