

Screen Share Center

The **Screen Share Center** enables you to view, play and send content from Miracast-enabled devices (such as your mobile device or tablet) and project them onto the TV screen. It also allows you to stream content from most mobile streaming apps (independent of Miracast).

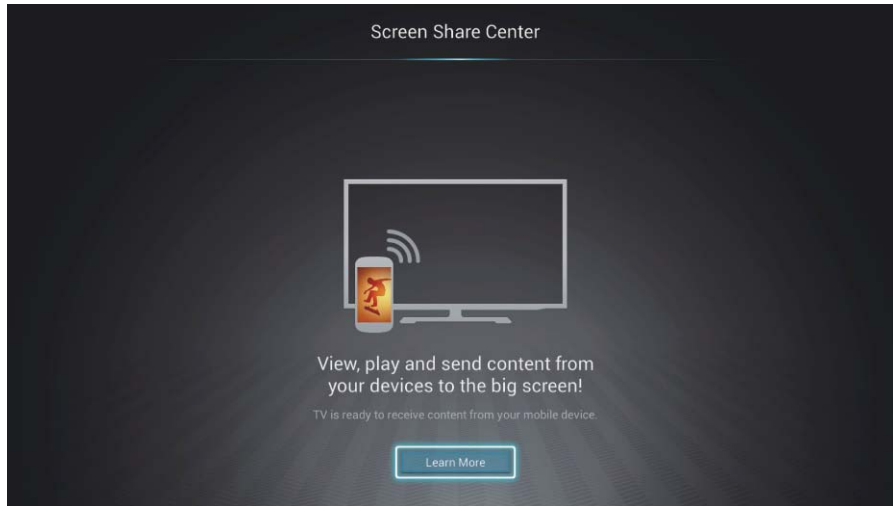


Figure 34. Screen Share Center Home Page

Using the Screen Share Center to Stream Content


To stream content from your device onto the TV screen:

1. Set the name of your Wi-Fi network on your device to match the name of the available Wi-Fi network on your TV. The **Screen Share Center** displays automatically.
2. From your phone or other personal device, go to **Settings > Device > Display > Cast Screen**. An **Invitation to Connect** window appears.
3. Click on **Accept**.
After a few seconds, the content begins to stream from your device onto the TV screen.

Using the Screen Share Center to Mirror Content

Mirroring uses WiFi Direct, which enables devices to connect directly to one another.

To mirror content from your device onto the TV screen:

1. Click on the **[Home Panel]**  button on your remote. The **Home Panel** appears on the left side of the screen.
2. Navigate to **Screen Share Center**.
3. From your phone or other personal device, go to **Settings > Device > Display > Cast Screen**. An **Invitation to Connect** window appears.
4. Click on **Accept**.
After a few seconds, the screen from your device displays on the TV.

Show all Inputs

To view a list of the devices that you have connected to the TV, navigate to the bottom of the **Home Panel**. Using the **[Confirmation]** button on your remote, select **Show All Inputs**.

A list of your inputs displays.

Navigating the Home Screen and Information Panels

NOTE

A second method to show all inputs is to select **Show All Inputs** and press the **[Yellow]** button on the bottom of the remote control.

Hide Inputs

To hide the list of devices that you have connected to the TV, navigate to the bottom of the **Home Panel** and select **Hide Inputs**.

The list of your inputs is no longer visible.

NOTE

You can also select **Hide Inputs** and press the **[Yellow]** button on the bottom of the remote control.

Edit Input Information

To edit information about your input sources, select the input that is listed and press the **[Red]** button (for the **Edit Name** function) on the bottom of the remote control.

For example, If you have an XBOX connected to the TV and want to edit the name that is being used for that input, then change the information to 'XBOX'.

An **Edit Input Source** name window displays in the middle of the screen. Use the built-in QWERTY keyboard to type the information that you want to change.

SHORTCUTS BAR

Google Search

Your Smart TV enables you to search for content within different system applications (**TV, On Demand, Media Center** and **App Center**).

For example, a simple search on Star Wars will take you to listings of various Star War films, website articles and much more.

PrimeTime

Bring together everything on your TV, Netflix, YouTube, Amazon Instant Video (where available) and all sorts of other Internet streaming sites. PrimeTime recommends the best content for you to watch.

Chrome

If you log into your Google account on your TV and computer, you can use the Google Chrome web browser to surf quickly or bring your open tabs, bookmarks, history and more from your computer to your Smart TV.

Settings

TV Settings

- **Startup Input Source:** Choose which content source you want to start up when you power on the TV.
- **Select Live TV Source:** Choose the source from which you are receiving local TV channels.
- **Configure Devices:** Make changes to your configured devices.
- **Scan Channels:** Scan channels from your TV antenna or cable set-top box.

Navigating the Home Screen and Information Panels

Wireless and Networks

- **Select a Network:** Change or view the type of network connection you are using to access the Internet.
- **Ethernet:** Turn the Ethernet 'On' or 'Off'.
- **Wi-Fi:** View the status of your Wi-Fi connection and IP address.
- **Wi-Fi Direct:** Turn Wi-Fi Direct 'On' or 'Off'.
- **Proxy:** Edit or create the settings for your proxy server.
- **Bluetooth:** Turn 'On' or 'Off' the Bluetooth feature or view all available Bluetooth devices.
- **Network Information:** View details (for example, Internet connectivity status, IP address, and more) that pertain to your network connection.

Wireless and Networks

- **Language Settings:** Select or edit the language for your Smart TV.
- **Sound:** Turn on or off sound effects for your TV and decrease or increase the sound for notifications and the clock alarm.
- **Input Method:** Select or edit the type of keyboard (Remote or Physical) that you want to use with your Smart TV.
- **Pointer Speed:** Increase or decrease how far you have to move the mouse to move the pointer a particular distance.
- **Speech:** Select the **Google Voice Recognizer** to speak commands into the microphone or **Text-to-Speech** feature to use with your Smart TV.
- **Manage IP remotes:** Connect to new IP remotes. For details about this feature, go to the '*Customizing Settings*' section.
- **Voice Search:** Set or edit your Voice Search settings.

Wireless and Networks

- **Make Passwords visible:** Turn this setting on or off.
- **Add Account:** Add another Google account for your Smart TV

Privacy

- **Parental control:** Turn 'On' or 'Off' parental control. If you turn it on, create a password that will enable you to set other options such as **Lock Input Source**, **Lock TV program by ratings**, and **Change parental control password**.
- **Lock input source:** When you turn 'On' parental control, you are able to prevent another source from being used to access TV channels.
- **Lock TV program by ratings:** Block access to view certain TV programs based on their ratings.
- **Change parental control password:** Change your password.
- **Personal data reports:** Enable or disable your usage data from being reported to Google.
- **Clear search history:** Clear all recent searches and searchable items.
- **Set safety:** Block adult content from appearing in search results, require a PIN to use Google Chrome & Play Store or deactivate Netflix.
- **Backup and restore:** Back up and restore all of your app data, Wi-Fi passwords, and more. You can also reset the TV back to the factory settings.

Privacy

- **Internal Storage:** Manage your internal storage space.
- **External Storage:** Manage your external storage space.
- **Running Apps:** View the amount of internal space that your running apps are using.
- **Downloaded apps:** View the amount of internal space that your downloaded apps are using.
- **All apps:** View the amount of internal space that all of your apps are using.

Navigating the Home Screen and Information Panels

System

- **Date & Time:** Set the date and time for your Smart TV system.
- **Location and Area:** Set the location for your Smart TV system.
- **Power:** Set the timer for when you want the TV to turn off automatically.
- **Accessibility:** Edit the status of the system services (TalkBack, Speak Passwords, Text-to-speech output, Touch & hold delay).
- **Security:** Set or change your security settings.
- **About TV:** View general information (such as the manufacturer name, model name, and software version) for your Smart TV.

Alerts

The **Alerts** icon displays the number of Android notifications that the TV has received.

Using the Sleep Timer

To use the **Sleep Timer** feature:

1. Press the **[Home Panel]** button on your remote.
The **Home Panel** window appears on the left side of the screen.
2. Navigate to **Settings > System > Power**.
The **Power** window displays on the screen.
3. Make your selection from the time increments that are listed.

NOTE

When you turn the TV off and back on, the Sleep Timer will be disabled.

Using Parental Control

The **Parental Control** feature enables you to block access to channels, movies and other content that is not appropriate for children.

Turning ON Parental Control

To turn 'ON' **Parental Control**:

1. Press the **[Home Panel]** button on your remote and navigate to the **Settings** icon OR just press the **[Edit Settings]** button on your remote.
The window appears on the left side of the screen.
2. Click on the **Settings** icon.
3. Using the navigation button go to **Privacy > Parental Control**.
A **Parental Control** window appears that shows **OFF** and **ON** radio buttons.
4. Enable Parental Control by selecting **ON**.
A **Parental Control** password window displays.
5. Create a 4-digit password.
6. Confirm the password that you have created by entering it again.
A confirmation message appears that reads "Parental password successfully changed"

Navigating the Home Screen and Information Panels

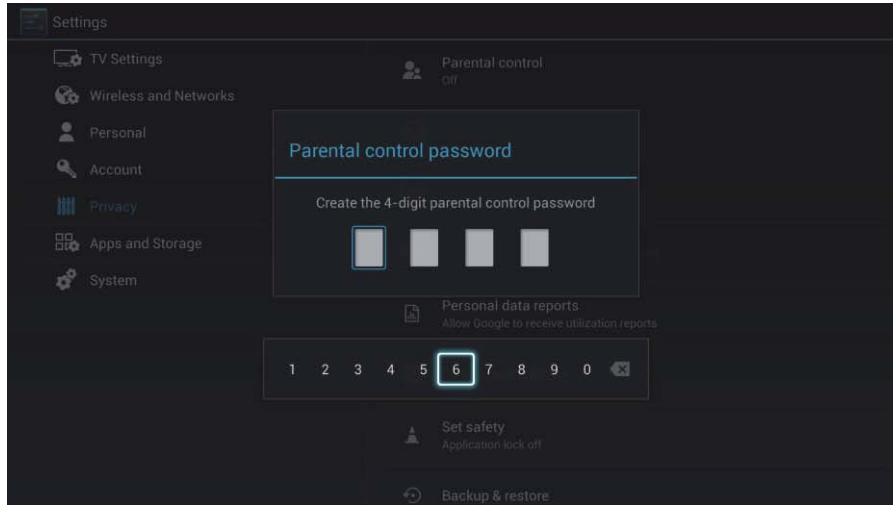



Figure 35. Parental Control Password window

Turning OFF Parental Control

To turn 'OFF' **Parental Control**:

1. Press the **[Home Panel]**  button and navigate to the **Settings** icon OR press the **Edit Settings** button on your remote. The window appears on the left side of the screen.
2. Using the **[Navigation]** button on your remote, select **Settings > Privacy > Parental Control**.
A Parental Control window appears that shows **OFF** and **ON** radio buttons.
3. Disable **Parental Control** by selecting **OFF**.
A Parental Control password window displays.
4. Enter your 4-digit password.
A confirmation message appears to let you know that it is turned off.

Locking the Input Source

In order to lock the input source or TV program by ratings, **Parental Control** must be turned 'ON'.

To use the **Lock the Input Source** feature:

1. From **Settings > Privacy** navigate to **Lock Input Source**.
2. Enter your password.
A Lock input source window appears.

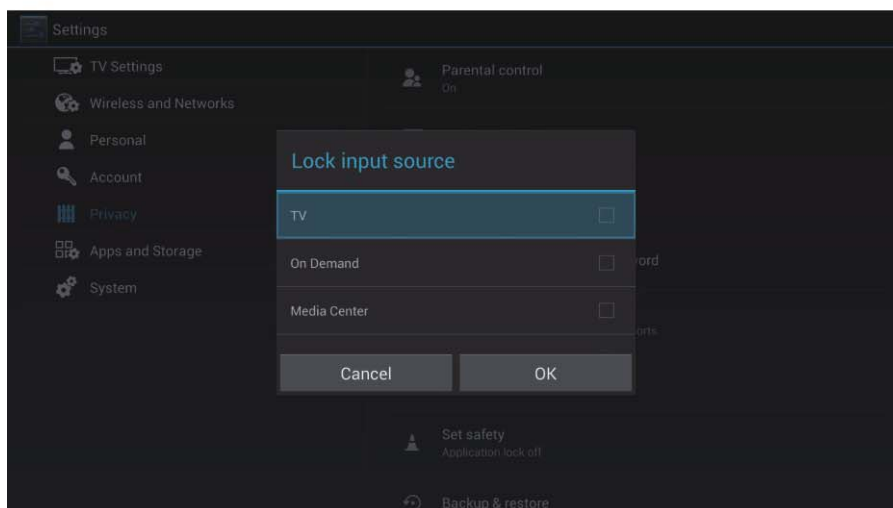


Figure 36. Lock Input Source window

3. Select the source that you want to lock and click **OK**.

Navigating the Home Screen and Information Panels

Locking a TV Program by Ratings

To use the **Lock a TV Program by Ratings** feature:

1. From **Settings > Privacy** navigate to **Lock Input Source**.
2. Enter your password.
A Program Rating Lock window appears.

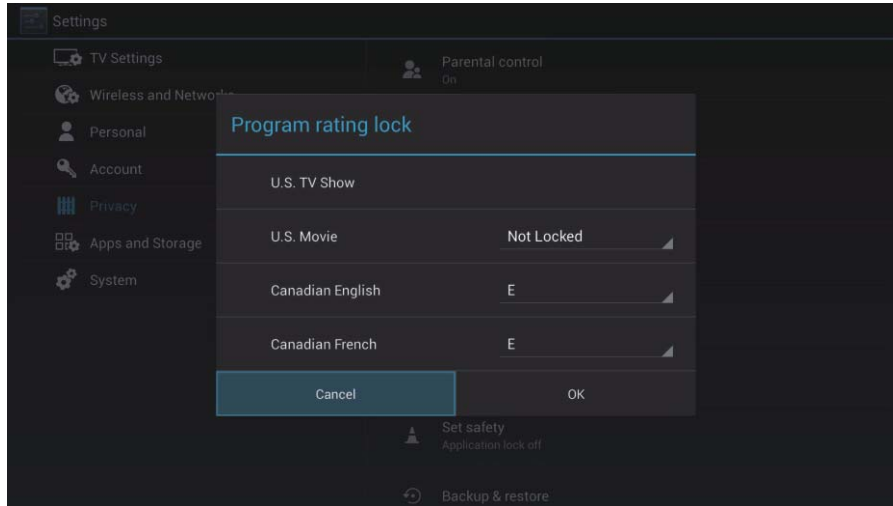


Figure 37. Program Rating Lock window

3. Select the type of program that you want to lock.

NOTE

All ratings that are higher than those you select are also blocked. For example, if you choose to block the PG-13 rating, then the higher ratings (R and NC-17) are automatically blocked too.

Description of U.S. TV Ratings

Content	Defined as
FV	Fantasy Violence
D	Suggestive dialog
L	Course or crude language
S	Sexual situations
V	Violence

Description of Age-based Ratings

TV-Y	All children
TV-Y7	Directed to older children
TV-G	General audience
TV-PG	Parental Guidance Suggested
TV-14	Parents strongly cautioned
TV-MA	Mature Audiences Only

U.S. Movie Ratings

Rating	Defined as
G	General audience
PG	Parental Guidance suggested
PG-13	Parents strongly cautioned
R	Restricted
NC-17	No one 17 and under permitted

Navigating the Home Screen and Information Panels

Canadian English Ratings

Rating	Defined as
C	Children
C8+	Children 8 years and older
G	General programming that is suitable for all audiences
PG	Parental Guidance
14+	Viewers 14 years and older
18+	Adult Programming

Canadian French Ratings

Rating	Defined as
E	Exempt programming (no rating)
G	General (appropriate for all ages and must contain little to no violence or sexual content)
13+	Programming is appropriate for children 13 and older and may contain moderate violence, language and some sexual situations
16+	Recommended for children 16 and older and may contain strong violence, language and sexual content
18+	Programming intended for viewers that are 18 and older. Programming may contain extreme violence and graphic sexual content/pornography.

 **NOTE**

If you forget your password, call **Hisense Customer Support** or reset your TV back to the factory settings.

Navigating the Home Screen and Information Panels

Accessing the Information Panel

The **Information Panel** launches a submenu to provide information in context to the type of content you are currently viewing. For example, if you are watching a live TV broadcast, you can get information about the channel and choose to add it to **Favorites**.

If you are in **On Demand** and are watching episode 3 of a TV series, then the **Information Panel** provides data about that particular episode.

Information Panel Elements for Live TV

If you access the **Information Panel** while viewing a live TV broadcast, then the following tabs appear:

- **Info:** This tab displays information about the program that you are currently viewing.
- **Channels:** This lists all of the available channels from your local service provider.
- **Favorites:** This lists all of the channels that you saved to your **Favorites** section.

To access the **Information Panel** while viewing a live TV broadcast:

1. Press the **[Information Panel]** button on the remote.
The window displays on the left side of the screen.

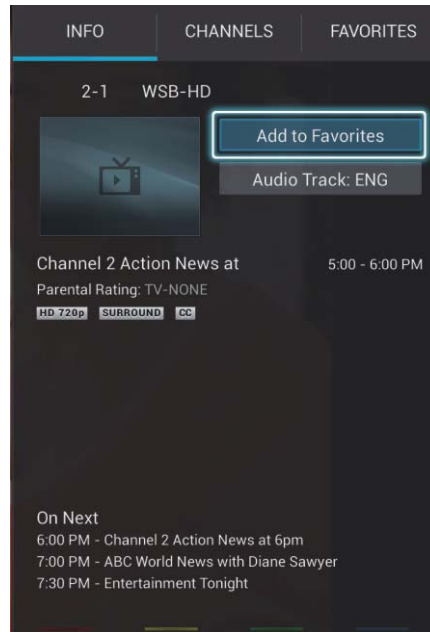


Figure 38. Information Panel window during live TV broadcast

2. Using the **[Navigation]** buttons on the remote, make your selection from the **Information Panel**.

Navigating the Four Smart TV Centers

Overview

The **VIDAA TV** series contains four system applications: **TV**, **On Demand**, **Media** and **Apps** Center. You can move freely back and forth between these applications without having to exit the current one.

- **TV** gives you access to live broadcast TV content.
- **On Demand** provides you access to online video content.
- **Media Center** is a central location for you to access video, image and audio files that are stored on your personal devices, network or Cloud.
- The **App Center** provides you access to pre-installed and downloaded applications that are stored on your TV.


About the TV Center

On-Screen Information: When you select a channel, a horizontal **Information Banner** briefly appears at the top of the screen and displays the:

- Rating for the program that you are watching
- Program Start and End time
- Current time
- Television network ID
- Available broadcast captions
- Programs that are coming on next

A second method to view the On-Screen information is by pressing the [**Information Panel**] button on the remote and selecting **Info**.

Favorites: Select **Favorites** to view a list of channels that you enjoy and want to access quickly. To add the channel that you are watching, select **Add to Favorites**. You can quickly move between favorite channels by pressing the [**Navigation**] button up or down.

TV Settings: Press the [**Edit Settings**]  button on your remote to view and change **Picture**, **Screen**, **Sound**, **Broadcast** and **TV Settings**. For a description of these settings, go to the '*Customizing Settings*' section.

On-Next Program Guide: While you are watching a channel, you can view programs that are scheduled to come on later.

Navigating the Four Smart TV Centers

TV Center

To view live broadcast TV content, select the **[TV]** button on your remote control.

To switch from live **TV** to a different area, press the appropriate button on the remote control.

Using the On-Next Program Guide

To view the On-Next Program Guide:

1. Press the **[Information Panel]** button on your remote control.
The window displays on the right side of the screen.
2. Select **Info**.
The names of the On Next programs appear at the bottom of the window.

Using the Channel List

To view a list of channels:

1. Press the **[Information Panel]** button your remote.
The window displays on the right side of the screen.
2. Select **Channels**.
A full list of channels and the programs appears.



Figure 39. Full Program Guide