

**Hisense**

GX1200V

# Getting Started

[www.hisense-usa.com](http://www.hisense-usa.com)  
[service@hisense-usa.com](mailto:service@hisense-usa.com)

*English*

ES-G124008

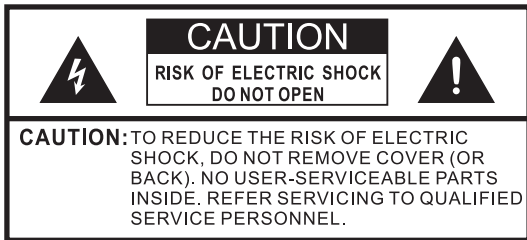
# Contents

Warning.....	3
FCC/IC Statement .....	7
Important Safety Instructions.....	10
Precautions.....	12
Remote .....	15
Pairing the Remote.....	19
Home .....	21
Google Chrome .....	22
All Apps.....	23
Google Play .....	24
Media Player .....	25
Picture-in-Picture .....	26
System Settings .....	27
Video Input .....	28
Specifications .....	31
Additional Information.....	33

# Warning

To reduce the risk of fire or electric shock, do not expose this apparatus to rain or moisture.

To avoid electric shock, do not open the cabinet. Refer servicing to qualified personnel only.



The lightning flash with arrowhead symbol, within an equilateral triangle is intended to alert the user to the presence of uninsulated dangerous voltage within the product's enclosure that may be of sufficient magnitude to constitute a risk of electric shock.

## Warning



The exclamation point within an equilateral triangle is intended to alert the user to the presence of important operating and maintenance (servicing) instructions in the literature accompanying the appliance.

Batteries or batteries installed apparatus shall not be exposed to excessive heat such as sunshine, fire or the like.

This graphical symbol is located on the bottom of the unit.

### Precautions

- To prevent fire or shock hazard, do not place objects filled with liquids, such as vases, on the apparatus.
- The player is not disconnected from the AC power source (mains) as long as it is connected to the wall outlet, even if the player itself has been turned off.
- Install this unit so that AC power cord can be unplugged from the wall socket immediately in the event of trouble.
- The nameplate is located on the bottom of the player.

### Installation

- Do not install this player in a confined space, such as a bookshelf or similar unit.

# Warning

## FCC Notice

This device complies with Part 15 of the FCC Rules. Operation is subject to the following two conditions: (1) this device may not cause harmful interference, and (2) this device must accept any interference received, including interference that may cause undesired operation.

This equipment has been tested and found to comply with the limits for a class B digital Device, pursuant to part 15 of the FCC Rules. These limits are designed to provide reasonable protection against harmful interference in a residential installation. This equipment generates, uses and can radiate radio frequency energy and, if not installed and used in accordance with the instructions, may cause harmful interference to radio communications. However, there is no guarantee that interference will not occur in a particular installation. If this equipment does cause harmful interference to radio or television reception, which can be determined by turning the equipment off and on, the user is encouraged to try to correct the interference by one or more of the following measures:

- Reorient or relocate the receiving antenna.

## Warning

- Increase the separation between the equipment and the receiver.
- Connect the equipment into an outlet on a circuit different from that to which the receiver is connected.
- Consult the dealer or an experienced radio/TV technician for help.

The manufacturer is not responsible for any radio or TV interference caused by unauthorized modifications to this equipment. Such modifications could void the user's authority to operate the equipment.

# FCC/IC Statement

## Industry Canada Notice

This device complies with industry Canada license-exempt RSS standards(s). Operation is subject to the following two conditions: (1) this device may not cause interference, and (2) this device must accept any interference, including interference that may cause undesired operation of the device.

Le présent appareil est conforme aux CNR d'Industrie Canada applicables aux appareils radio exempts de licence. L'exploitation est autorisée aux deux conditions suivantes: (1) l'appareil ne doit pas produire de brouillage, et (2) l'utilisateur de l'appareil doit accepter tout brouillage radioélectrique subi, même si le brouillage est susceptible d'en compromettre le fonctionnement.

Under industry Canada regulations, this radio transmitter may only operate using an antenna of a type and maximum (or lesser) gain approved for the transmitter by industry Canada. To reduce potential radio interference to other users, the antenna type and its gain should be so chosen that the equivalent isotropically radiated power (e.i.r.p.) is not more than that necessary for successful communication.

## FCC/IC Statement

Conformément à la réglementation d'Industrie Canada, le présent émetteur radio peut fonctionner avec une antenne d'un type et d'un gain maximal (ou inférieur) approuvé pour l'émetteur par Industrie Canada. Dans le but de réduire les risques de brouillage radioélectrique à l'intention des autres utilisateurs, il faut choisir le type d'antenne et son gain de sorte que la puissance isotrope rayonnée équivalente (p.i.r.e.) ne dépasse pas l'intensité nécessaire à l'établissement d'une communication satisfaisante.

### **FCC RF Safety Caution Statement**

To satisfy FCC RF exposure requirements for mobile and base station transmission devices, a separation distance of 20 cm or more should be maintained between the antenna of this device and persons during operation. To ensure compliance, operation at closer than this distance is not recommended. The antenna(s) used for this transmitter must not be co-located or operating in conjunction with any other antenna or transmitter.

### **RF Exposure Statement for Canada**

Notice: To satisfy IC RF exposure requirements for mobile and base



## FCC/IC Statement

station transmission devices, a separation distance of 20 cm or more should be maintained between the antenna of this device and persons during operation, To ensure compliance, operation at closer than this distance is not recommended. The antenna(s) used for this transmitter must not be co-located or operating in conjunction with any other antenna or transmitter.

Avis: Pour répondre à la IC d'exposition pour les besoins de base et mobiles dispositits de transmission de la station, sur une distance de séparation de 20 cm ou plus do it être maintenue entre l'antenne de cet appareil et les personnes en cours de fonctionnement. Pour a ssurer le respect, l'exploitation de plus près à cette distance n'est pas recommandée. L'antenne (s) utilisé pour cet émetteur ne doit pas être co-localisés ou fonctionner conjointement avec une autre antenne ou transmetteur.

# Important Safety Instructions

1. Read these instructions.
2. Keep these instructions.
3. Heed all warnings.
4. Follow all instructions.
5. Do not use this apparatus near water.
6. Clean only with dry cloth.
7. Do not block any ventilation openings. Install in accordance with the manufacturer's instructions.
8. Do not install near any heat sources such as radiators, heat registers, stoves, or other apparatus (including amplifiers) that produce heat.
9. Do not defeat the safety purpose of the polarized or grounding-type plug. A polarized plug has two blades with one wider than the other. A grounding type plug has two blades and a third grounding prong. The wide blade or the third prong are provided for your safety. If the provided plug does not fit into your outlet, consult an electrician for replacement of the obsolete outlet.
10. Protect the power cord from being walked on or pinched particularly at plugs, convenience receptacles, and the point where they exit

# Important Safety Instructions

from the apparatus.

11. Only use attachments/accessories specified by the manufacturer.
12. Use only with cart, stand, tripod, bracket, or table specified by the manufacturer, or sold with the apparatus. When a cart is used, use caution when moving the cart/apparatus combination to avoid injury from tip-over.
13. Unplug this apparatus during lightning storms or when unused for long periods of time.
14. Refer all servicing to qualified service personnel. Servicing is required when the apparatus has been dropped.



# Precautions

## Placement

- Place the player in a location with adequate ventilation to prevent heat build-up in the player.
- Do not place the player on a soft surface such as a rug that might block the ventilation holes.
- Do not place the player in a location near heat sources, or in a place subject to direct sunlight, excessive dust, or mechanical shock.
- Do not place the player outdoors, in vehicles, on ships, or on other vessels.
- If the player is brought directly from a cold to a warm location, or is placed in a very damp room, moisture may form on the outer surface and on interior of the player.

Should this occur, the player may not operate properly. In this case, leave the player turned on for about half an hour until the moisture evaporates.

- Do not install the player in an inclined position. It is designed to be operated in a horizontal position only.
- Do not place metal objects in front or on the both sides of the player. It may limit reception of radio waves.

# Precautions

- Do not place the player in a place where medical equipment is in use. It may cause a malfunction of medical instruments.
- If you are a pacemaker or other medical device, consult your physician or the manufacturer of your medical device before using the wireless LAN function.
- Do not place heavy or unstable objects on the player.
- Disconnect the AC power cord and all other cables from the player when you move the player.

## Power

- Disconnect the player from the wall outlet if you are not going to use the player for a long time. To disconnect the AC power cord, grasp the plug itself; never pull the cord.
- Observe following points to prevent the AC power cord being damaged, Do not use the AC power cord if it is damaged, as doing so may result in an electric shock or fire.
  - Do not pinch the AC power cord between the player and wall, shelf, etc.
  - Do not put anything heavy on the AC power cord or pull on the AC power cord itself.

# Precautions

## Adjusting the volume

Use caution when adjusting the volume if there is no audio input or the input is at a low level to prevent damage to your ears or the speakers when the audio input level is high.

## Cleaning

Clean the cabinet, panel, and controls with a soft cloth. Do not use any type of abrasive pad, scouring powder or solvent such as alcohol or benzene.

## Replacement parts

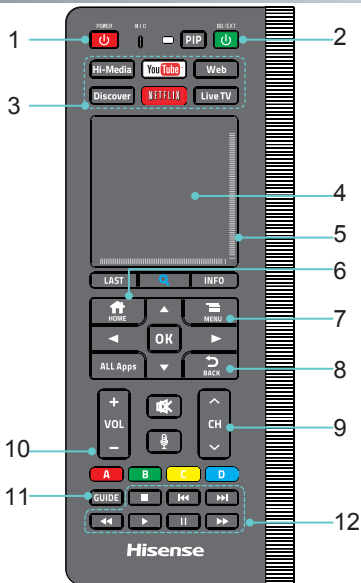
In the event the product undergoes repair, observe proper disposal or recycling procedures.

## HDMI connections

Improper handling may damage the HDMI jack and the connector.

- Carefully align the HDMI jack on the rear of the player and the HDMI connector by checking their shapes. Make sure the connector is not upside down or tilted.
- Be sure to disconnect the HDMI cable when moving the player.
- Hold the HDMI connector straight when connecting or disconnecting the HDMI cable. Do not twist or force the HDMI connector into the HDMI jack.

# Remote



- Navigation Function  
A D-Pad (directional pad) with Up | Down | Left | Right and OK is found on both the front and back side of the remote control.

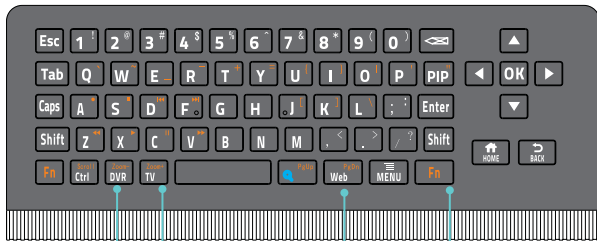
# Remote

1. **Getting Started**-ON/STANDBY: Turns the player on or off.
2. ON/STANDBY(BD/EXT): Turns on or off the TV/AV receiver.
3. Hi-Media: Launch the Multi-Media player.  
YouTube: Launch the YouTube application.  
Web: Launch the web browser.  
Discover: Browse TV and Movies on live TV.  
NETFLIX: Launch the Netflix application.  
Live TV: Displays the live TV.
4. Touch pad with mouse cursor and click.
5. Scroll vertically for web browser.
6. Opens the home screen.
7. Displays special options associated with each feature.
8. Returns to the previous display, or exits the application.
9. Selects the next/previous channel.  
**Available only when the player is connected to a set top box.**
10. Turns the volume up or down
11. Displays the TV program guide.
12. Multi-Media control functions for playing videos, music or pictures.



# Remote

## Using the QWERTY key board:



Displays the DVR(Digital Video Recorder) menu.

Displays Live TV.

Type your query in the Quick Search Box, and the player will suggest content from various media sources.

Functions keys printed in orange are accessed by pressing the 'Fn' (Function) button.

### NOTES

GUIDE and TV are available only when the player is connected to a Set Top Box.

DVR is available only when the player is connected to a Set Top Box with the DVR function.

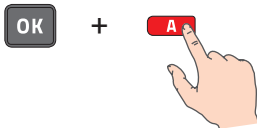
# Remote

## Green LED indicator

- The LED on the remote control will blink with each key press and while the touchpad is in use.
- In pairing mode, the LED will light continuously for ~60-seconds.
- When pairing is complete, the LED will flash three times.
- The LED light will blink continuously when the battery is low.
- Sleep ModeTo conserve battery life, the remote control will automatically go into sleep mode thirty seconds after the last key press. Any movement or key press will immediately wake up the remote.

## Pairing the Remote

- After connecting the Pulse to your TV and turning on the power, press and hold the red color “A” and “OK” remote control keys simultaneously for 3 seconds. When the green LED lights, release the keys and wait for the Pulse to pair with the remote. The green LED on the remote control will flash three times when the pairing is successfully completed.



- If the remote failed to automatically pair with the Pulse, you can manually pair the devices by following the steps below:
  - 1) Press Home key
  - 2) Use left (<) or right (>) arrow keys to highlight All Apps and press OK key
  - 3) Use down (V), left (<) or right (>) arrow key to highlight Settings and press OK key
  - 4) Use up (^) or down (V) arrow keys to highlight Network and press

## Pairing the Remote

OK key

- 5) Use up (Λ) or down (V) arrow keys to highlight Bluetooth settings and press OK key
- 6) Use up (Λ) or down (V) arrow keys to highlight Hisense Pulse Remote Control (if the remote had been previously paired) or Find nearby devices (if the remote has not previously been paired) and press OK key

### NOTES

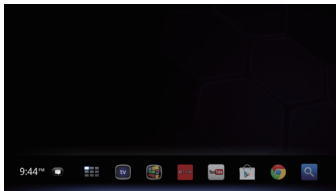
The green LED must be on during Find nearby devices (follow instructions at the top of the page if the LED is not illuminated and repeat step 7 above)



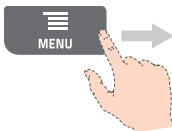
# Home

Access Pulse features from here

You can access various content and applications from the Home screen. The home screen contains Notifications, All Apps, and short-cuts to select applications and websites.



The Home screen can be customized to suit your preferences. You can arrange the Home menu, add widgets to the Home screen, and change the wall paper by pressing the MENU key.



The Pulse uses Google Chrome™ as its web browser. You can access all your favorite websites with the Google Chrome web browser.

press



OR



OR



select



Websites can be bookmarked, and you can access bookmarks from the browser menu. You can also add a shortcut of a website to All Apps by pressing the MENU key while using the Chrome browser.

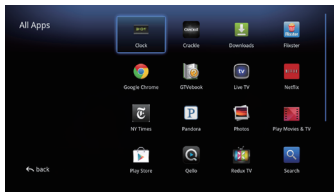
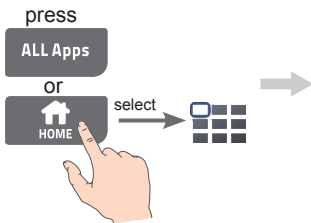




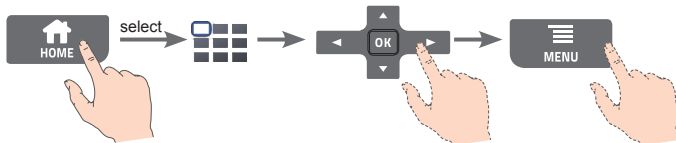
# All Apps

Access installed applications

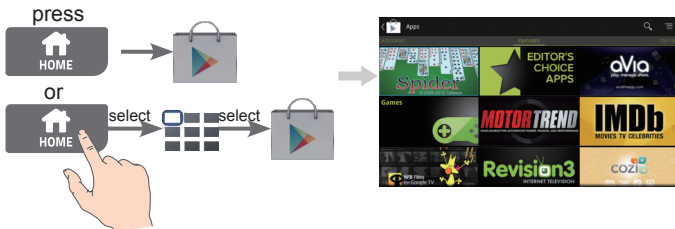
You can access various content and applications installed on your Pulse from the All Apps list. You can launch any installed application from here using either the touchpad or D-Pad to navigate and make your selection.



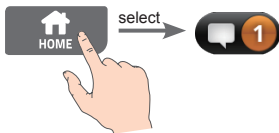
Applications or bookmarks in the All Apps list can be uninstalled, hidden, or removed using the Menu Options.



Google Play™ can provide you with additional favorite applications. You can download applications and instantly use them on your Pulse. Downloaded applications are stored in All Apps.



You can check the progress of downloads by checking in Notifications.



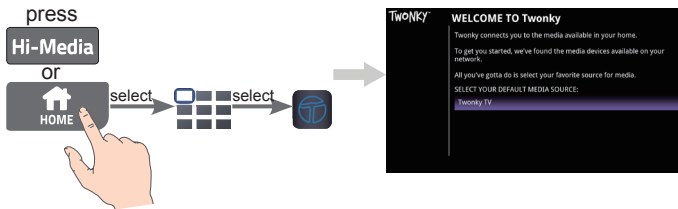




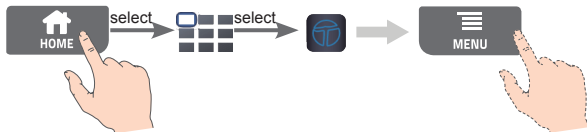
# Hi-Media

Play it. See it. Hear it. Control it.

You can play audio, video and image files stored on a USB device, using Twonky for Google TV.



You can select a device and change its settings.





## Picture-in-Picture

Multi-task while watching TV

PIP (Picture-in-Picture) is a feature that allows you to display the TV screen in an inset window. For example, you can browse the internet on the full screen, while watching a TV program in the inset window at the same time.



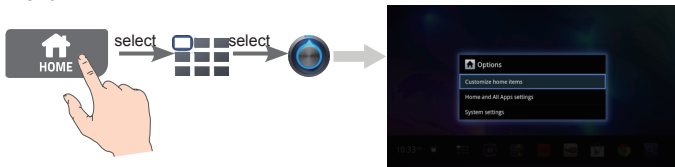
Press and hold the PIP key to access the Picture-in-Picture settings and controls.

### NOTES

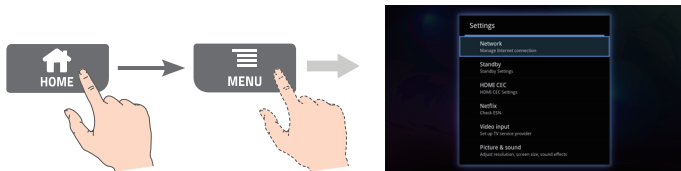
The image displayed in the PIP window is from the HDMI input on the Pulse.

# System Settings Customizing your Pulse

You can change various settings for your player from the Settings menu.



You can also access the Settings menu from the menu that appears when the Home screen is displayed.



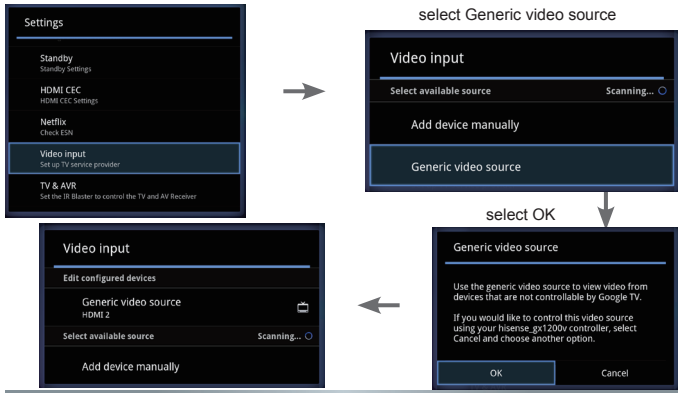
# Video Input

## NOTES

Please make sure you have connected the IR Blaster cable to the Pulse.

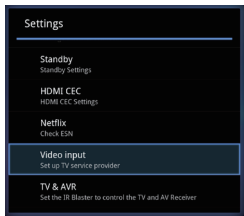
Enter the Settings menu and then select Video Input.

Use the generic video source to view video from devices that are not controllable by Google TV.

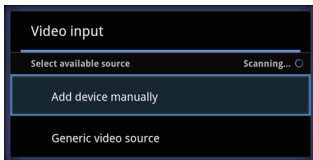


# Video Input

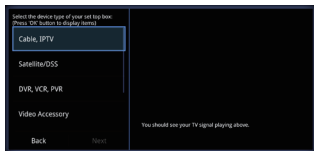
If you want to control this video source by your Pulse controller, follow the steps below:



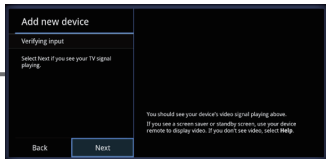
select Add device manually



select the type of the device connected



select NEXT



# Video Input

↓  
Input the manufacturer, Model Number and Command Set

Select the device manufacturer of your set top box (Press 'OK' button to display item)

Manufacturer (e.g. Sony)

Model Number (e.g. BDPBX1)

Command Set (e.g. Y1516)

You should see your TV signal playing above.

Back Next

select NEXT

Select the device Command of your set top box (Press 'OK' button to display item)

Sony

Address 2

CT1506

If you don't know the Model Number or Command Set, press Next to test a few codes.

You should see your TV signal playing above.

Back Next

Select Send Power to check if the controller could control the device connected

IR Blaster setting is complete

You can control your unit with the Remote by using the IR Blaster.

Type: Cable, IPTV

Manufacturer: Sony

Model Number: Address 2

Command: CT1506

Index: 1

You should see your TV signal playing above.

Back Done

Identify your IR Blaster code

Type: Cable, IPTV

Manufacturer: Sony

Model Number: Address 2

Command: CT1506

Index: 1/1

Select Send POWER.

Send POWER.

Did your device turn on or off?

No, try next Yes

You should see your TV signal playing above.

If your electronic device does not have a power button, please press CH +, DIVE/GUIDE or Up/Down on the Remote after clicking "Send POWER"

# Specifications

<b>Input/output jacks</b>	
HDMI IN	HDMI 19-pin standard connector Video: 480i, 480p, 720p, 1080i, 1080p (24fps & 60fps) Audio: Linear PCM , Dolby Digital
HDMI OUT	HDMI 19-pin standard connector Video: 720p, 1080i, 1080p (24fps & 60fps) Audio: Linear PCM , Dolby Digital
LAN	100BASE - TX Terminal
USB	USB jack type A
IR Blaster	Mini jack (for connecting the IR blaster cable)
<b>Power and others</b>	
Power requirements	120V AC, 60Hz
Power consumption	15W
Dimensions	114x114x38.5 (mm)
Weight	0.32kg
Operating temperature	5°C - 35°C (41°F - 95°F)
Operating humidity	25% - 80%

# Specifications

<b>Wireless</b>	
Wireless LAN standard	IEEE 802.11b/g/n
Frequency range	2.4 GHz band: Channel 1-11
Modulation	DS-SS Modem and OFDM Modem
<b>Accessories</b>	
Supplied accessories	Remote control -1 Size AAA batteries - 3 Power Adapter - 1 Quick Setup Guide - 1 Getting Started - 1 IR Blaster cable -1



## Additional Information

### **About wireless LAN security**

Since communication via the wireless LAN function is established by radio waves, the wireless signal may be susceptible to interception. To protect wireless communication, this player supports various security functions. Be sure to correctly configure the security settings in accordance with your network environment.

### **No Security**

With an unsecured (open) home network, anyone can intercept wireless communication or intrude into your wireless network, even without any sophisticated tools. Keep in mind that there is a risk of unauthorized access or interception of data.

### **WEP**

WEP applies security to communications to prevent outsiders from intercepting communications or intruding into your wireless network. WEP is a legacy security technology that enables older devices, which do not support TKIP/AES, to be connected.

### **WPA-PSK(TKIP), WPA2-PSK(TKIP)**

TKIP is a security technology developed to correct for the deficiencies

## Additional Information

of WEP. TKIP assures a higher security level than WEP.

### **WPA-PSK(AES, WPA2-PSK(AES)**

AES is a security technology that uses an advanced security method that is distinct from WEP and TKIP.

AES assures a higher security level than WEP or TKIP.

# Hisense

Imported by Hisense USA Corp.

7310 McGinnis Ferry Rd, Suwanee, GA 30024, USA  
1-678-318-9060

<http://www.hisense-usa.com>

Email: [info@hisense-usa.com](mailto:info@hisense-usa.com)

All rights reserved. Hisense is a trademark of Hisense Electronic registered in some countries. All other products and brand names are trademarks of their respective owners.

印刷条码