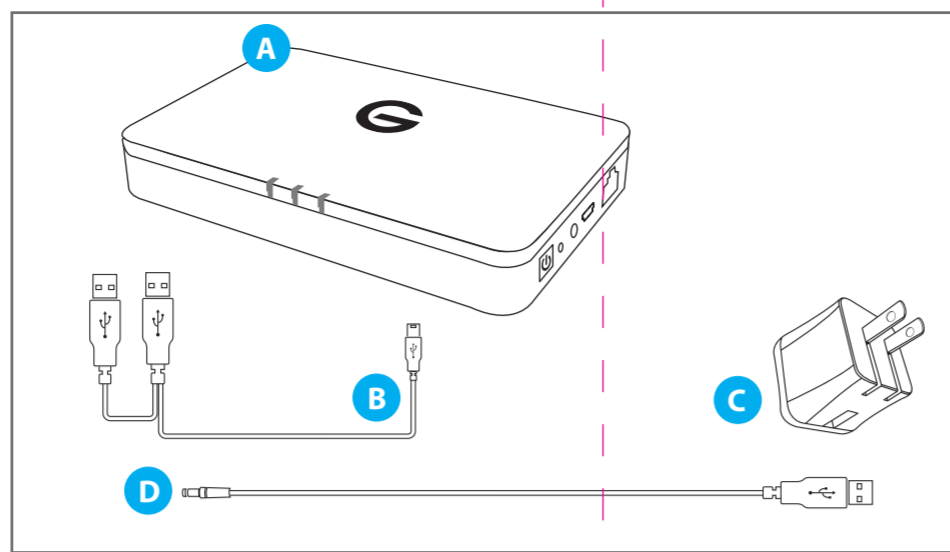




QUICK SETUP GUIDE

VERIFY BOX CONTENTS

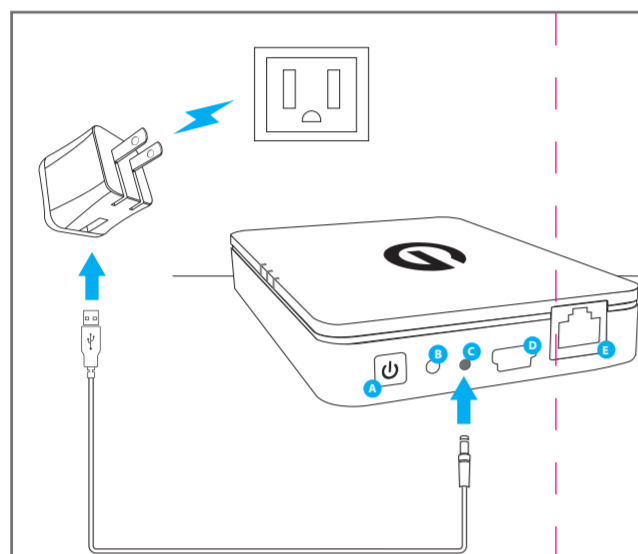


- A** G-CONNECT
- B** USB Y-Cable
- C** Power Adapter
- D** Power Cable

For any questions about the G-CONNECT, please visit our online support at: <http://www.g-technology.com/support>

©2011 G-Technology by Hitachi Global Storage Technologies. All rights reserved. Designed by G-Technology in California. G-CONNECT and G-Technology are trademarks of Hitachi GST. Apple, iPad, iPhone, iPod touch, Mac OS, and the Mac logo are trademarks of Apple, Inc., registered in the U.S. and other countries. Windows 7, Windows Vista, and Windows XP are trademarks of the Microsoft group of companies. All other trademarks are the property of their respective owners.

1 HARDWARE SETUP



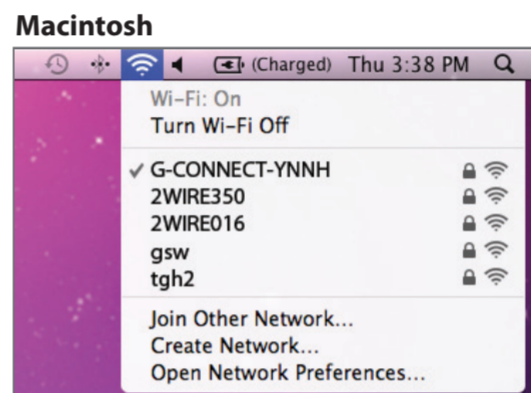
- A Power Button:** (On/Off) Press the power button and wait for the LED's to begin flashing. Do not disconnect the device from the power adapter unless the LED's have turned off.
- B Reset:** While the device is starting up, press and hold the reset button until the LED's on the front of the device begin to oscillate.
- C Power Port:** Connect the device to the power adapter to enable wireless access.
- D USB Port:** Used for quickly moving files to and from the device using a personal computer.
- E Ethernet Port:** Connect an Ethernet cable (sold separately) to your home network to enable Internet access

Turn on the G-CONNECT by pressing the Power button. The Status and PWR/HDD status indicator lights will illuminate. The Status light will continue to flash for a few moments indicating that your device is powering on.

2 CONNECT TO THE WIRELESS NETWORK

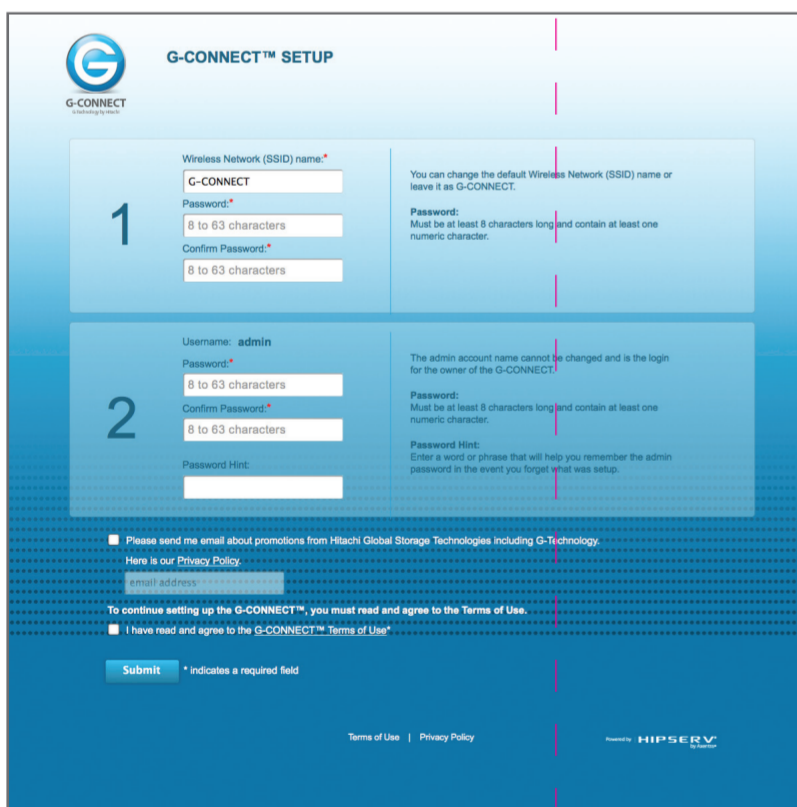
Go to the Wireless Network Connection icon on your personal computer and view your available Wireless Networks. Find the network named 'G-CONNECT-XXXX' and connect to it.

Note: the last four characters after the name G-CONNECT are the last four digits of your device's internal product key, which is a unique number assigned to each device.



Once you are connected to the G-CONNECT-XXXX wireless network, open a new browser window and type in <http://www.gtech-connect.com> to go to the G-CONNECT Welcome page. Click on the link that says 'Click here to begin' to start the setup process.

3 SETUP YOUR DEVICE



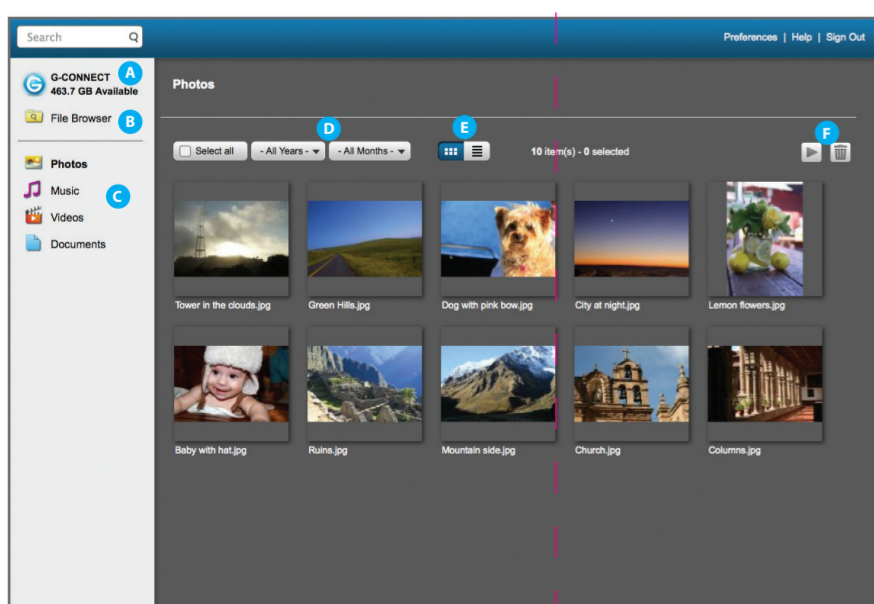
- 1 Wireless Network (SSID) name**
Just like connecting to the Internet through a wireless home router, the Wireless Network (SSID) name is used to identify your G-CONNECT device when connecting over Wi-Fi. You can leave this as the default name 'G-CONNECT,' but it is recommended that you enter a name that is more meaningful to you.

The Wi-Fi password is used as both the password to the Wireless Network and the password to the 'Guest' account. Guest users are only allowed access to content found in the public folders on the device.
 - 2 Admin Account**
The Admin is typically the owner of the G-CONNECT and can manage all of the content found on the device. This password is different from the Wi-Fi password because it allows access to both the private and public content on the device.
- Finishing the setup**
Once you've entered your information click on the 'Submit' button to complete setup. You can now begin using G-CONNECT by entering <http://www.gtech-connect.com> into your preferred web browser and logging in using either the Guest or Admin account credentials.

CONNECTING TO THE INTERNET

You can also use your G-CONNECT device as a Wi-Fi hotspot to browse the Internet. Just plug an Ethernet cable from your home router into the G-CONNECT device and open a browser to begin surfing the web.

4 WELCOME TO G-CONNECT



- A** Available Capacity
- B** Display and manage content by folder
- C** Display content by type
- D** Sort content by date created
- E** Show Thumbnail or List view
- F** Perform actions on selected items (Play/Slideshow, Delete, Upload, Download)

Now that the G-CONNECT has been successfully setup, you can add content in a variety of ways. The recommended way to quickly add content to the device is by using the included USB Y-Cable. For alternate ways to add content, visit <http://www.g-technology.com/support>

Transferring files using the USB Y-Cable

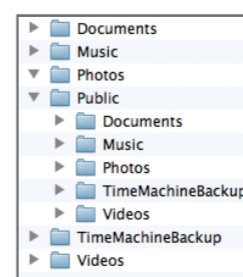
Power off the G-CONNECT by pressing the power button found on the device until the LED's begin flashing. When the LED's turn off, it is safe to disconnect the power adapter and using the USB Y-Cable provided to you with the box contents. Plug the two identical ends of the Y-Cable into your personal computer and the third into your G-CONNECT.

Your G-CONNECT should now appear as a drive on the desktop if using a Mac and in 'My Computer' if using Windows.

Open Finder on your Mac or Windows Explorer on PC and find the G-CONNECT icon. Drag and drop files from your personal computer into the default folder types on the G-CONNECT. It is recommended, but not required that you use these folders to organize your files.

Files added into the top level folders are private and only visible by users who log in using the Admin account. Files added under the Public folder are accessible by all users that log into the G-CONNECT using the Guest password.

Once you have added your content to the device, you can safely remove the G-CONNECT from your Personal Computer and reconnect it to the power supply for Wi-Fi access.



Using the G-CONNECT

The G-CONNECT features a built-in application that functions like a typical website.

To access this application from your Personal Computer, open your desired web browser and go to: <http://www.gtech-connect.com> and log in using either the Admin or Guest account password.

Getting the free iPad app

Download the free iPad app from the Apple App store onto your mobile device. Use this G-CONNECT app to wirelessly connect and stream content.

Please visit our online technical support for more information about using the iPad app.

<http://www.g-technology.com/support>