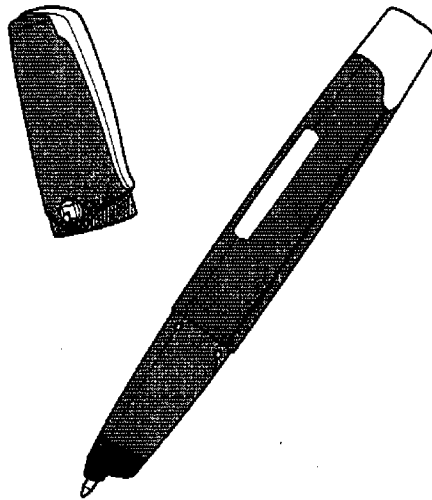


# maxell

## Model DP-101U/101B Digital Pen Instruction Manual



*Thank you for your interest in our "Hitachi Maxell Digital Pen". Thorough reading of and frequent reference to this Instruction Manual will ensure you the fullest benefits and enjoyment of this state-of-the-art gadget. The serial number and password, among other important information, are found on the back cover of this Instruction Manual.*

Each digital pen has its own serial number for identification and is further set up with a password for protecting the data stored in the pen's memory. The above information may be necessary when using the digital pen, so keep this instruction manual in an easily available place.

### Digital Pen Data Record Column



---

## **Table of Contents**

---

Important Information .....	3
Cautions for Safety .....	4
CAUTIONS WHEN STORING .....	7
TAKE NOTE OF THE FOLLOWING: .....	7
Before Using .....	8
Provided Accessories .....	8
Names of Parts .....	9
Charging Battery .....	10
Using Digital Pen .....	11
Replacing Refill .....	12
REMOVING REFILL .....	12
INSERTING NEW REFILL .....	12
Interpreting Operation Display Block .....	13
How to use the Pen with Bluetooth (DP-101B only) .....	14
Troubleshooting .....	16
RESETTING DIGITAL PEN .....	16
Major Specifications .....	17

# Important Information

## For Your Safety

**WARNING : TO PREVENT FIRE OR SHOCK HAZARD, DO NOT EXPOSE THIS UNIT TO RAIN OR MOISTURE.**

**WARNING : TO PREVENT FIRE OR SHOCK HAZARD, USE THE RECOMMENDED ACCESSORIES ONLY.**



**WARNING: TO PREVENT FIRE OR SHOCK HAZARD, BE SURE TO USE THE SPECIFIED CHARGER (PS-DP1).**

**Warning:** This device complies with Part 15 of the FCC Rules. Operation is subject to the following two conditions: (1) This device may not cause harmful interference, and (2) this device must accept any interference received, including interference that may cause undesired operation.

**Note:** This equipment has been tested and found to comply with the limits for a Class B digital device, pursuant to Part 15 of the FCC Rules. These limits are designed to provide reasonable protection against harmful interference in a residential installation. This equipment generates, uses, and can radiate radio frequency energy and, if not installed and used in accordance with the instructions, may cause harmful interference to radio communications. However, there is no guarantee that interference will not occur in a particular installation. If this equipment does cause harmful interference to radio or television reception, which can be determined by turning the equipment off and on, the user is encouraged to try to correct the interference by one or more of the following measures:

- Reorient or relocate the receiving antenna.
- Increase the separation between the equipment and receiver.
- Connect the equipment into an outlet on a circuit different from that to which the receiver is connected.
- Consult the dealer or an experienced radio/TV technician for help.

**Caution to the user:** Changes or modifications not expressly approved by the manufacturer void the user's authority to operate the equipment.

**Note:** In order to comply with FCC radio-frequency radiation exposure guidelines for an uncontrolled exposure, this device and its antenna must not be co-located or operating in conjunction with any other antenna or transmitter.

**LED RADIATION  
DO NOT VIEW DIRECTLY WITH OPTICAL  
INSTRUMENTS  
CLASS 1M LED PRODUCT**

### DECLARATION OF CONFORMITY

with FCC Rules for Electromagnetic Compatibility

Products: Digital Pen

Models: DP-101U/101B

Trade Name: Maxell

This device complies with part 15 of FCC Rules.

Operation is subject to the following two conditions:

- (1) this device may not cause harmful interference, and
- (2) this device must accept any interference received, including interference that may cause undesired operation.

Responsible Party:

## **Cautions for Safety**

### **Do not look inside the pen through the writing point:**

Directly looking at the infrared light of the pen could damage your eyesight.

### **This product is for domestic use.**

This digital pen has specifications for use in US. The software provided with this digital pen is in English. The provided warranty is valid only in US. Hitachi Maxell shall be free from any responsibility for aftersales service in foreign countries when the digital pen malfunctions or is faulty in those countries, or for any compensation of repair fees. Do not resell this product in any foreign country.

### **Do not use this pen for any other purposes than writing.**

### **Be careful with oil-based ink:**

Oil-based ink stains on clothes may not be removable.

### **Do not write with the pen point facing up:**

Holding the pen with the point up may cause the ink to leak.

### **Use only specified refills.**

### **Do not use the pen when there is a malfunction:**

If the pen generates smoke or smell, immediately stop using the pen, and then remove the power supply, such as the charger: Continuing to use the pen could cause a fire or electric shock.

**WARNING:** Never attempt to repair the pen by yourself: This is always dangerous.

### **Do not disassemble or modify the pen in any way, or remove the cover:**

Disassembling or modifying the pen or the charger could cause a fire or electric shock: High voltage device is stored inside the cover.

### **Handle the charger with care:**

Observe the following when handling the charger. Failure to do so could result in generation of heat or a fire:

- Do not charge the battery near fire or under direct rays of hot sun.
- Do not use a charger other than that specified (model PS-DP1 charger).

### **Use the charger near an AC outlet:**

Do not plug the charger into an AC outlet that is not easily accessible, such as behind chest, under desk.

### **Be careful not to damage the charger case:**

If the case is damaged by dropping the charger, unplug the charger from the AC outlet: Using it as is could cause a fire or electric shock.

### **Use the charger only in a well-ventilated, spacious area:**

Do not use the charger in a confined space where ventilation is blocked, or where it is too near other objects. Using the charger in a small, cramped area may result in accumulation of heat inside the charger case, which could damage the case, and also cause a fire, burns, electric shock or malfunctions.

### **Do not use a generally available electronic transformer:**

Do not connect the charger to an electronic transformer that is generally available for overseas trips: Doing so could cause a fire or electric shock.

### **Do not use the charger for appliances other than this digital pen:**

The charger is for the exclusive use of this digital pen.

### **Do not insert or pull out the power plug with wet hand:**

Wet hand could cause electric shock.

**Do not damage the power cord:**

Observe the following when handling the power cord so as not to damage it:

- Do not cut it with a knife.
- Do not twist it.
- Do not forcibly bend it.
- Do not place any heavy object or an object with sharp corner on it.
- Do not heat it.
- Do not pull it.
- Do not modify it in any way.
- Do not bundle it.
- Do not cover it with rug, etc.

If the power cord is damaged, unplug it from the AC outlet. Using the damaged power cord as is could cause a fire or electric shock.

**Insert the power plug completely:**

Incomplete insertion of power plug may generate heat due to defective contact, which could result in a fire.

**Do not connect multiple devices to one AC outlet:**

Do not exceed the ratings when using the charger or connection devices: Exceeding ratings due to connection of multiple devices could result in a fire because of heat generation.

**Do not pull the power cord when unplugging it:**

Be sure to hold the plug when unplugging the power cord. Pulling the cord may damage the cord, which could cause a fire or electric shock.

**Do not bring the digital pen or the power cord near a heater:**

If used near a heater, the surface of the device or components inside will deteriorate, and could cause a fire or electric shock.

**Always unplug the power cord from the AC outlet when not using the digital pen for a long period:**

Leaving the power plug connected to the AC outlet for a long time could cause a fire.

**Be careful not to trip on the power cord or USB cable:**

If your leg is caught on the power cord or USB cable, you may fall down or an injury could result.

**Do not use the digital pen in an airplane:**

Never use the pen in an airplane because it could interfere with the safety in flight (be sure to cap the pen and turn it off before boarding a plane).

**Do not use the digital pen near a high-precision electronic device:**

Turn the digital pen off near any high-precision electronic device so as not to interfere with it.

(Examples of device that the pen could affect: Pacemaker, hearing aid or other medical electronics, fire alarm, automatic door, etc. If you are using a medical electronic device, consult the device maker or dealer for effects of radio waves on such a device.)

**Be careful of itching, rash and eczema:**

Depending on your constitution or physical condition, itching, rash or eczema may occur. If this happens, immediately stop using the pen and consult a physician.

**Do not subject the digital pen to impact:**

The digital pen is a precision device. Take great care not to hit it against a hard object or drop it.

**No sand or dust!**

Sand or dust entering the pen or the charger will cause malfunctions.

**No water or oil!**

Water or oil entering the pen or the charger will cause electric shock or malfunctions.

**Take care with ambient temperature:**

- In extremely hot or cold temperatures, the digital pen may not operate normally.
- Do not leave the pen in a closed vehicle for a long period of time: This may cause the pen to malfunction.

**Do not point the digital pen at the sun:**

Direct sunlight entering the lens could cause the pen to malfunction.

**Do not use the digital pen near TV or radio:**

Interference may appear on TV screen or enter radio broadcast.

**Do not use the digital pen in a place where there is strong radio wave or magnetism:**

If the digital pen is used near strong radio waves or magnetism, such as near a radio wave tower or electric appliances incorporating a motor, the pen may not operate normally.

**Do not use the digital pen in a place where there is thick soot or steam:**

Thick soot or steam could damage the pen case or cause malfunctions.

**Do not use the digital pen near corrosive gas:**

The parts inside the pen could corrode when used in a place where there is dense exhaust gas generated by gasoline or diesel engines, or corrosive gas such as hydrogen sulfide, which could cause the pen to malfunction.

**Do not use the digital pen near an ultrasonic humidifier:**

- With some water in humidifier, calcium and other chemicals dissolved in water could scatter in the air, and white particles could adhere to the lens of this pen, which could cause it to operate abnormally.
- If moisture enters the pen, condensation could cause the pen to operate abnormally.

**Do not wipe the digital pen case with benzene or thinner:**

The coating of case could peel off or the case could be damaged.



## CAUTIONS WHEN STORING

### **Do not leave the digital pen under a very high temperature for a long period of time:**

The temperature inside a closed vehicle or trunk can rise as high as 164 °F (73 °C) under the strong sun. If left under such circumstances, the digital pen could malfunction or the pen body could be deformed. Also, do not expose the pen to direct sunlight or place it near a heater.

### **Do not store the digital pen in a place where the humidity is high or in a dusty place:**

Dust entering the pen could cause malfunctions. If the humidity is high, the lens could become moldy, and the pen could become unusable.

### **Do not store the digital pen in a place subject to strong magnetism or intense vibrations:**

This could cause malfunctions.

### **The digital pen has a sharp point, which could be a dangerous weapon. Never point it at a person, and keep the pen out of the reach of children.**

Incorrect use of the pen could cause an injury.

### **Take great care that young children do not swallow the cap, refill or refill replacement adapter by mistake:**

If swallowed, immediately consult a physician.

## TAKE NOTE OF THE FOLLOWING:

### **Repair & Dispose:**

Please ask for Hitachi Maxell or our sales partner or reseller if you want to repair or dispose your digital pen.

### **No recorded contents shall be subject for compensation:**

Hitachi Maxell shall be free from any responsibilities for any improper recording, and any damages from abnormal recording shall not be subject for compensation if the digital pen is faulty, or if it is mistakenly used by you.

### **Reliability of this product:**

- The digital pen is designed and manufactured for home and general business use. Avoid using it for applications that might have a conspicuous influence on human life and property, or that require high reliability. Hitachi Maxell will not accept any responsibility for any accident from such applications.
- Examples of applications that require high reliability for which the use of this digital pen is inappropriate: Chemical plant control, life support systems, air-traffic control.





## Before Using

### - You can do the following with the digital pen:

-The digital pen is an interface device of new concept.

If you write characters on a specified sheet of paper (PAPER) on which special patterns are printed, the digital pen will convert the hand-written characters to digital data (data on locus of pen, writing pressure, etc.). The converted digital data can be transmitted to another device, such as PC. This way, the digital pen can be used as an input device for PC, etc.





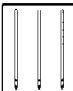


-There are two models of digital pen depending on the equipped interface:

Model	Interface	
	USB (conforming to USB 1.1 standard)	Bluetooth (conforming to Bluetooth 1.1 standard)
DP-101U	Available	Unavailable
DP-101B	Available	Available

The digital pen can also be used for the purpose of certification: It can recognize "who has made access to which application" using the pen ID data and the data of special patterns on specified paper (PAPER).

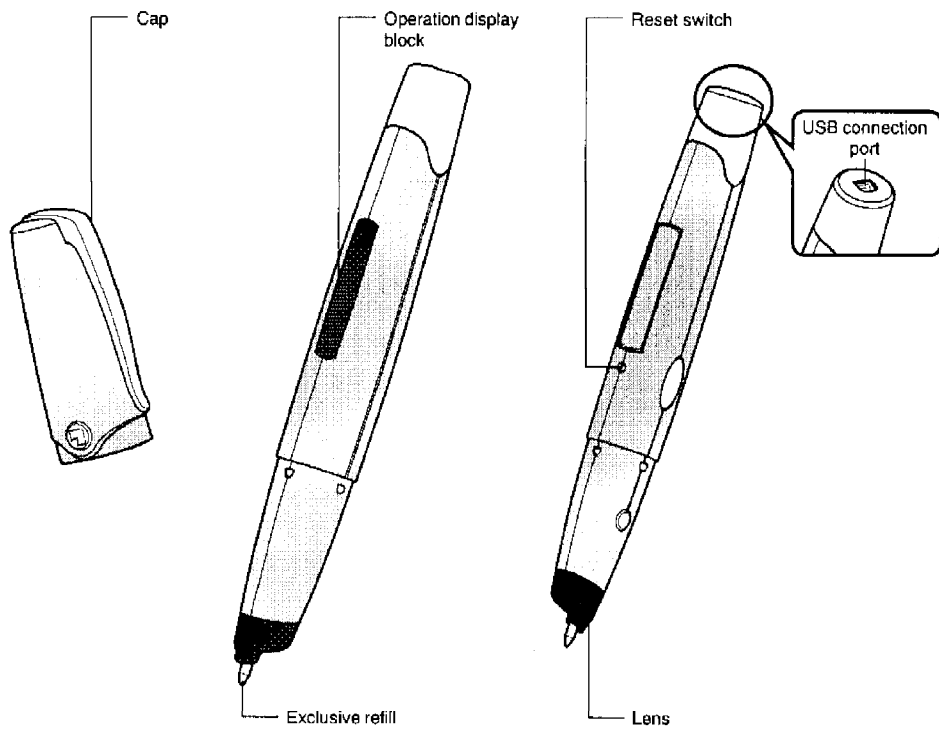
## Provided Accessories

When unpacking, make sure that you have all the following accessories:

<b>Charger</b> 	<b>Power cord</b> 	<b>USB cable</b> 	<b>CD-ROM containing software</b> 
<b>3 replacement refills</b> 	<b>2 DIGITAL NOTEBOOKS</b> 	<b>Refill replacement adapter</b> 	



## Names of Parts



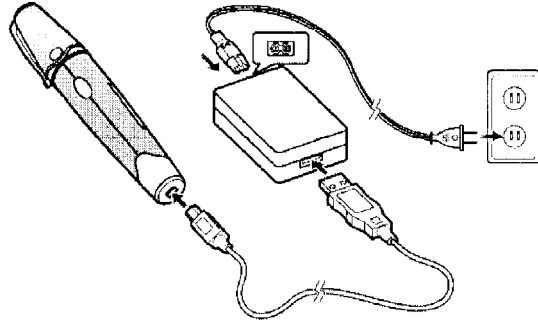
---

## Charging Battery

---

The battery has not been charged at time of purchase. Charge it before using the digital pen. Uncapping the digital pen turns the pen on: Be sure to cap it when charging.

- 1 Connect the power cord to the charger.
- 2 Plug the power cord into the AC outlet.
- 3 Connect the USB cable to the charger.
- 4 Insert the USB cable into the USB connection port of the digital pen.



Charging will start, and the battery indicator in the pen operation display will blink green to show that the battery is being charged. If the battery is completely discharged, it will take approx. 10 minutes for the battery indicator to blink green after charging has started.


It will take approx. 2.5 hours for the battery to be completely charged: The charge time will vary depending on the battery remaining charge level.

**Note:**

- Both ends of the USB cable have different shapes of plugs, which specifically match the pen's USB connection port and the charger respectively. Check the shape of each cable plug and make sure you insert it properly.
- The digital pen can also be used in overseas countries. The provided charger can use a power supply of 100-240 V AC, 50/60 Hz. If you are in a country where the power plug of charger does not fit AC outlet, purchase an AC plug adapter (generally available) and use it.
- You can use the digital pen with a fully charged battery for approx. 2 hours.

## Using Digital Pen

### 1 Turn power on.

Uncap the digital pen.  
The pen will vibrate for a short period, and then the green indicator  will light.

### 2 Write with the digital pen.

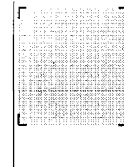
All data written by the digital pen on PAPER will be recorded in the pen. To stop writing, cap the digital pen: The pen will turn off.

#### Note:

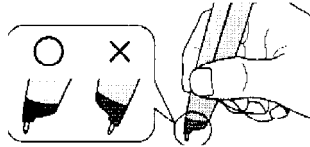
Use PAPER on which is written "PAPER enabling Anoto functionality".

Take care with the following when writing with digital pen:

- Write only inside the entry frame (hatched portion) on PAPER.



- Hold the pen so that the lens of pen point faces the PAPER. The orientation of pen point is specified.



- Do not block the lens at pen point during writing.



### 3 Mark a box.

To mark a box on the paper, check it () , put a stroke () , or just tap it () with the digital pen: The pen will vibrate.

### 4 Turn power off.

Cap the digital pen.

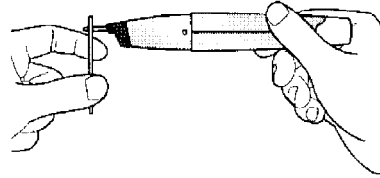
---

## Replacing Refill

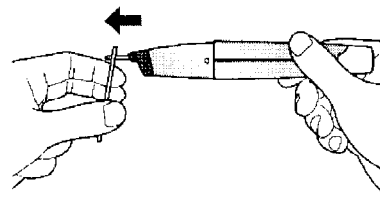
---

### REMOVING REFILL

**1** Push the refill replacement adapter through the refill.

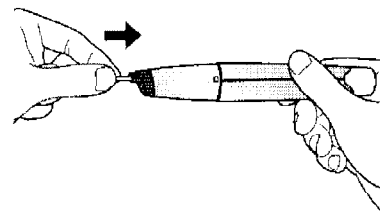


**2** Tilt the refill replacement adapter to remove the refill in the direction of the arrow.

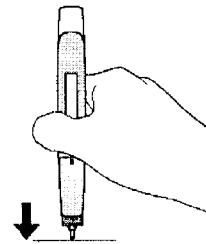


### INSERTING NEW REFILL

**1** Hold the refill with your fingers and insert it into the digital pen halfway.



**2** Hold the digital pen as shown in the figure with the refill fit to the flat surface, and then push the pen against a flat surface in the direction of the arrow.

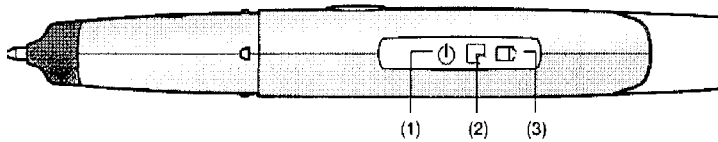


**Note:**

- Be sure to use only the specified refill for replacement.
- When inserting the refill, do not use undue force.
- When removing refill, take care in using force so that the refill does not pop out abruptly.
- Do not point the pen at a person when you replace the refill.

## Interpreting Operation Display Block

The indicators in the operation display will inform you of the status of digital pen.



(1)

Status of indicator	Status of digital pen
Off	- The pen's power is off. - No battery power for the digital pen.
Lights green	- The digital pen is ready to use. - All written data will be stored in the pen's memory.
Blinks green	The digital pen is in the standby status because the writing has stopped for a while.

(2)

Status of indicator	Status of digital pen
Blinks green	The digital pen is communicating with external device.
Lights red	An error occurred during communications (the digital pen and external device cannot communicate with each other or use services, etc.)

(3)

Status of indicator	Status of digital pen
Blinks green	The charger is connected and the battery is being charged. (If the battery has no remaining charge, it will take approx. 10 minutes for the battery indicator to blink green after charging has started.)
Lights green	Charging is complete with the charger connected.
Off	This indicator goes out when the charger is disconnected after charging is finished.
Blinks green slowly	The battery remaining level is only 15% of full charge. The digital pen is still usable, but charge the battery as soon as possible.
Blinks red slowly	Battery is running out, and the digital pen will go off soon: Needs a charge immediately.

## How to use the Pen with Bluetooth (DP-101B only)

### Pair up Pen with Bluetooth (master/slave)

#### 1 Pen = Slave

- 1) Put Bluetooth of a receiving device into a "device-scanning" mode.
- 2) Take Pen's cap off.
- 3) After a while, Pen responds to the "device-scanning" signal from Bluetooth.
- 4) & 5) Please go to the Next Step.

#### 2 Pen = Master

- 1) Put a receiving device into a "pairing" mode.
- 2) Take Pen's cap off and check the icon for "Bluetooth pairing mode" of a stylo card.
- 3) Pen does "device-scanning" and make a pair with the receiver, which is in "pairing".
- 4) & 5) Please go to the Next Step.

### Next Step

- 4) Enter Pen's PIN code for authentication.
- 5) Pen vibrates three times to let you know the authentication and pairing are completed.

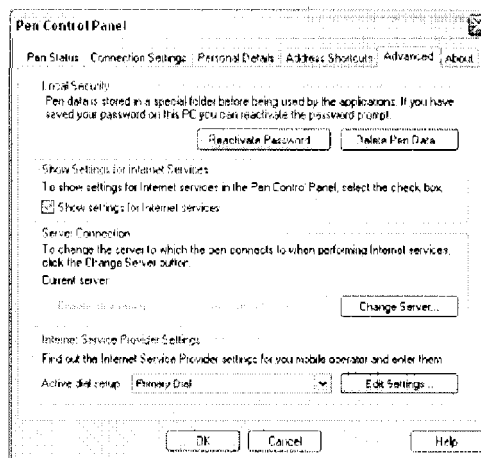
### Registration of Pen's Dial-up Access Point

To register your Pen's dial-up access point, you need PC software ("Maxell Digital Pen Suite"). Please install this software by the enclosed CD-ROM through the following steps:

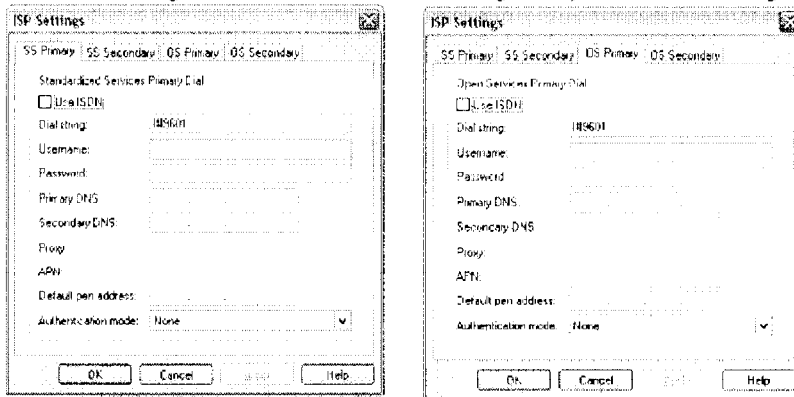
Before proceeding with the following, please make sure that you have completed the pairing of your Pen with PC.

#### 1. Connect Pen with PC by USB.

- 1 - 1) Click "Anoto" icon on Task Bar, open "Pen Control Panel", and select "Advanced".

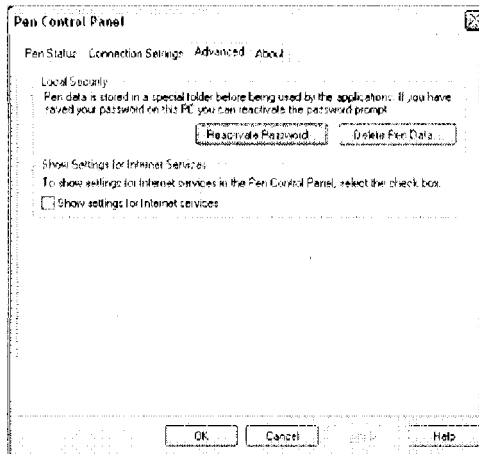


1 - 2) Select "Edit Settings" of "Internet Service Provider Settings", and you will see "ISP Settings" screen.



1 - 3) Enter your Dial-up Telephone Number in "Dial string" of both "SS Primary" and "OS Primary"

(\* ) When you cannot find "Internet Service Settings" (please see below),



go to "Show Settings for Internet Services", then check the "Show Settings for Internet Services" check-box and click "Apply" button. You will see "Internet Service Settings" on your PC screen.

## 2. Disconnect Pen and USB

Pen is ready for you to use. Try and operate Pen along with application.

### Important Notes for Use

- When "error" occurs to Pen during use, put on the cap once again and after a short while take off the cap to make Pen operable.
- If the above "Cap-on & Cap-off" measure does not work, re-set the Pen and start using again. You can find Re-set Button (a tiny hole-like form) near ID Place on Pen's body. Press the hole by using a sharp-point top. Pen vibrates once, and the re-set process is completed.
- During the pairing process, your Pen's telephone number (which is embedded in the Pen and makes an access to Server) may be hampered, and if that is the case, please register once again such telephone number into Pen.

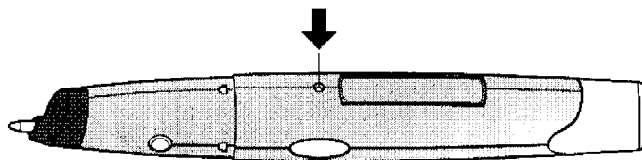
## Troubleshooting

Check the following yourself before asking for repair. If the digital pen still does not operate normally, do not repair it yourself, but consult your dealer.

Symptom	Troubleshooting	Reference page
Battery cannot be charged.	Please check whether the charger and the power cord are properly connected.	10
Pen vibrates during writing and $\odot$ indicator is lit red. (When the pen is in this condition, the written data cannot be stored in the pen's memory.)	<ul style="list-style-type: none"><li>- Please check once again that your paper is the "PAPER enabling Anoto functionality".</li><li>- Please make sure that your writing is within the entry frame on the PAPER.</li><li>- Please make sure that you are holding the pen correctly, and make sure the pen's lens at pen point is facing the paper.</li><li>- If the surface of PAPER is stained or rubbed, the pen cannot store your writing: Use another sheet of PAPER.</li></ul>	11
Pen vibrates for a short period during writing and the $\square$ indicator is lit red.	Since the pen is processing transmission, the pen's reading function cannot be used: Wait until the red light goes out.	-
Pen does not vibrate even though you mark the Magic box.	The pen did not recognize the selection: Mark the box again. If the pen still does not recognize it after repeated tries, reset the pen.	16

### RESETTING DIGITAL PEN

- If the pen stops working while in use, reset the pen by pressing the reset switch with a pin or other pointed object.
- Pressing the reset switch will not erase any of the stroke data stored in the digital pen.  
While pressing the reset switch, do not put any pressure on the point of the pen.





---

---

## Major Specifications

---

Models	DP-101U: USB model DP-101B: Bluetooth + USB model
Weight	0.08 lbs (38 g)
Dimensions	With cap: 6 x 1 x 13/16 inch (152 x 25 x 20 mm) Without cap: 5-13/16 x 13/16 x 11/16 inch (148 x 21 x 18 mm)
Bluetooth standard (DP-101B only)	Conforming to Bluetooth 1.1 standard
Operating temperature	32-104 °F (0-40 °C) (no condensation)
USB standard	Conforming to USB 1.1 standard
Built-in battery	Lithium polymer rechargeable battery
Pen usable time	At least 2 hours
Standby time	At least 10 hours (without cap)
Charge time	Approx. 2.5 hours



**User notice**

Enter the following in preparation for any future service needs:

Dealer:

TEL:

Purchase date:

<http://www.maxell.co.jp>