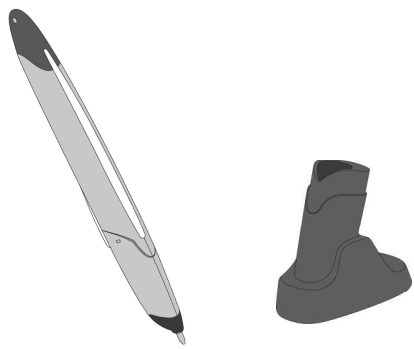


DP-201 (R4.1) Digital Pen Installation Manual



Thank you for your interest in the Hitachi Maxell Digital Pen. Thorough reading of and frequent reference to this Instruction Manual will ensure you enjoy optimal performance from this state-of-the-art tool. The serial number and Bluetooth PIN code is written on a label that packed with the digital pen. At first, please paste it on the following 'Digital Pen Data Record Column'.

The information contained in this manual may be necessary when using the digital pen. Please keep this Instruction Manual in an easily accessible place.

Digital Pen Data Record Column

Important Information : For Your Safety

WARNING :TO PREVENT FIRE OR SHOCK HAZARD, DO NOT EXPOSE THIS UNIT TO RAIN OR MOISTURE.

WARNING :TO PREVENT FIRE OR SHOCK HAZARD, USE THE RECOMMENDED ACCESSORIES ONLY.

WARNING: TO PREVENT FIRE OR SHOCK HAZARD, BE SURE TO USE THE SPECIFIED CHARGER (PS-DP1).

Safety Precautions

Do not look inside the pen through the writing point.

Directly looking at the infrared light of the pen could damage your eyesight.

This product is for domestic use.

This digital pen has specifications for use in the EU. The software provided with this digital pen is in English. The provided warranty is valid only in the EU. Hitachi Maxell shall be free from any responsibility for after-sales service in foreign countries when the digital pen malfunctions or is faulty in those countries, or for any compensation of repair fees. Do not resell this product in any foreign country.

Do not use this pen for any other purpose than writing.

Be careful with oil-based ink.

Oil-based ink stains on clothes may not be removable.

Do not write with the pen point facing up.

Holding the pen with the point up may cause the ink to leak.

Use only specified refills.

Do not use the pen when there is a malfunction.

If the pen generates smoke or an odor, immediately stop using the pen, then remove the power supply, such as the charger. Continuing to use the pen could cause a fire or electric shock.

WARNING: Never attempt to repair the pen by yourself. This is always dangerous.

Do not disassemble or modify the pen in any way, or remove the cover.

Disassembling or modifying the pen or the charger could cause a fire or electric shock. A high voltage device is stored inside the cover.

Handle the charger with care.

Observe the following when handling the charger. Failure to do so could result in the generation of heat or a fire:

- Do not charge the battery near fire or under direct sunlight.
- Do not use a charger other than that specified (model PS-DP1 charger).

Use the charger near an AC outlet.

Do not plug the charger into an AC outlet that is not easily accessible, such as behind a chest or under a desk.

Be careful not to damage the charger case.

If the case is damaged by dropping the charger, unplug the charger from the AC outlet. Using it as is could cause a fire or electric shock.

Use the charger only in a well-ventilated, spacious area.

Do not use the charger in a confined, poorly ventilated space, and do not place it too near other objects. Using the charger in a small, cramped area may cause heat to build up inside the charger case, which could damage the case and also cause a fire, burns, electric shock or malfunctions.

Do not use a generally available electronic transformer.

Do not connect the charger to an electronic transformer that is generally available for overseas trips. Doing so could cause a fire or electric shock.

Do not use the charger for appliances other than this digital pen.

The charger is for the exclusive use of this digital pen.

Do not insert or remove the power plug with wet hands.

Handling the plug with wet hands could cause electric shock.

Do not damage the power cord.

Observe the following when handling the power cord so as not to damage it:

- Do not cut it with a knife.
 - Do not twist it.
 - Do not forcibly bend it.
 - Do not bundle it.
 - Do not place any heavy object or an object with sharp corners on it.
 - Do not expose it to heat.
 - Do not pull it.
 - Do not modify it in any way.
 - Do not cover it, such as with a rug.
- If the power cord is damaged, unplug it from the AC outlet. Using a damaged power cord could cause a fire or electric shock.

Insert the power plug completely.

An improperly inserted power plug might cause a defective contact, which could generate heat and result in a fire.

Do not connect multiple devices to one AC outlet.

Do not exceed the ratings when using the charger or connection devices. Exceeding ratings due to the connection of multiple devices could generate heat and cause a fire.

Do not pull the power cord when unplugging it.

Be sure to hold the plug when unplugging the power cord. Pulling the cord may damage the cord, which could cause a fire or electric shock.

Do not bring the digital pen or the power cord near a heater.

If used near a heater, the surface of the device or components inside will deteriorate, and could cause a fire or electric shock.

Always unplug the power cord from the AC outlet when not using the digital pen for a long period.

Leaving the power plug connected to the AC outlet for a long time could cause a fire.

Be careful not to trip on the power cord or USB cable.

If your leg is caught on the power cord or USB cable, you may fall down and injure yourself.

Do not use the digital pen in an airplane.

Never use the pen in an airplane because it could interfere with in-flight safety (be sure to cap the pen and turn it off before boarding a plane).

Do not use the digital pen near a high-precision electronic device.

Turn the digital pen off near any high-precision electronic device so as not to interfere with it. Examples of devices the pen could affect include. Pacemakers, hearing aids or other electronic medical devices, fire alarms, and automatic doors. If you are using an electronic medical device, consult the manufacturer or dealer for information on the effects of radio waves on such a device.

Be careful of itching, rash and eczema.

This pen might cause itching, rash or eczema. If this happens, stop using the pen immediately and consult a physician.

Note on handling refills.

Do not reuse damaged refills as this could cause ink leakage. When replacing refills, take special care not to damage the tip of the pen.

Do not subject the digital pen to impact.

The digital pen is a precision device. Take great care not to hit it against a hard objects or drop it.

No sand or dust!

If sand or dust enter the pen or the charger, it will cause a malfunction.

No water or oil!

If water or oil enter the pen or the charger, it will cause an electric shock or a malfunction.

Take care with ambient temperature.

In extremely hot or cold temperatures, the digital pen may not operate normally. Do not leave the pen in a closed vehicle for a long period of time as this may cause the pen to malfunction.

Do not point the digital pen at the sun.

Direct sunlight entering the lens could cause the pen to malfunction.

Do not use the digital pen near a TV or radio.

The digital pen may interfere with TV and radio broadcasts.

Do not use the digital pen near strong radio waves or magnetic fields.

If the digital pen is used near strong radio waves or magnetic fields, such as near a radio tower or electric appliances incorporating a motor, the pen may not operate normally.

Do not use the digital pen where there is thick soot or steam.

Thick soot or steam could damage the pen case or cause malfunctions.

Do not use the digital pen near corrosive gas.

The parts inside the pen could corrode when used in a place where there is dense exhaust gas generated by gasoline or diesel engines, or corrosive gas such as hydrogen sulfide, which could cause the pen to malfunction.

Do not use the digital pen near an ultrasonic humidifier.

Calcium and other chemicals dissolved in water and dispersed through the air via a humidifier could adhere to the lens of the pen and cause a malfunction. If moisture enters the pen, condensation could cause the pen to operate abnormally.

Do not wipe the digital pen case with benzene or thinner.

The coating of case could peel off or be damaged if it comes in contact with benzene or thinner.

Storage Precautions

Do not expose the digital pen to a very high temperature for a long period of time.

The temperature inside a closed vehicle or trunk can rise as high as 164 °F (73 °C) on a hot day. If exposed to such conditions, the digital pen could malfunction or the pen body could be deformed. Also, do not expose the pen to direct sunlight or place it near a heater.

Do not store the digital pen in humid or dusty places.

Dust entering the pen could cause a malfunction. Humidity could cause the lens to become moldy, making the pen unusable.

Do not store the digital pen in a place subject to strong magnetic fields or intense vibrations.

Strong magnetic fields or vibrations could cause malfunctions.

The digital pen has a sharp point, which could be a dangerous weapon. Never point it at a person, and keep the pen out of the reach of children.

Incorrect use of the pen could cause an injury.

Take great care that young children do not swallow the cap, refill or refill replacement adapter by mistake.

If the cap, refill or refill replacement is swallowed, consult a physician immediately.

Put the cap on the digital pen.

Be sure to put the cap on the digital pen to protect the pen-point lens when carrying it around or when it is not in use.

Take Note Of The Following

Repair & Disposal.

Please consult Hitachi Maxell, our sales partner or reseller if you want

to repair or dispose of your digital pen.

No recorded contents shall be subject for compensation.

Hitachi Maxell shall be free from any responsibilities for any improper recording, and any damages from abnormal recording shall not be subject for compensation if the digital pen is faulty, or if it is mistakenly used by you.

Product liability:

The digital pen is designed and manufactured for home and general business use only. Hitachi Maxell cannot accept any responsibility for any accident that might cause damage to human life or loss to property due to use of the product in such applications as chemical plant controls, life-support, and air traffic control systems, where a very high-level of responsibility is required.

Using Pen Cradle:

For USB connection and battery charging, the pen cradle PC-201 must be used. PC-201 is designed for digital pen DP-201.

Charging Battery

The battery is uncharged at the time of purchase. Charge it before using the digital pen. Because uncapping the digital pen turns the pen on, be sure to cap it when charging.

Charging will start, and the battery indicator in the pen operation display will blink green to show that the battery is being charged. If the battery is completely discharged, it will take approx. 10 minutes for the battery indicator to blink green after charging has started. It will take approx. 2.5 hours to completely charge the battery. The charge time will vary depending on the battery's remaining-charge level.

Interpreting Operation Display Block

The indicators in the operation display will inform you of the status of the digital pen.

(1)

Indicator	Status of digital pen
Off	- The pen is turned off. - The battery is dead.
Green	- The digital pen is ready to use. - All written data will be stored in the pen's memory.
Blinks green	The digital pen is in standby mode after a break in activity.

(2)

Indicator	Status of digital pen
Blinks green	The digital pen is communicating with an external device.
Red	An error occurred during communications (for example, the digital pen and external device cannot communicate with each other or use services).

(3)

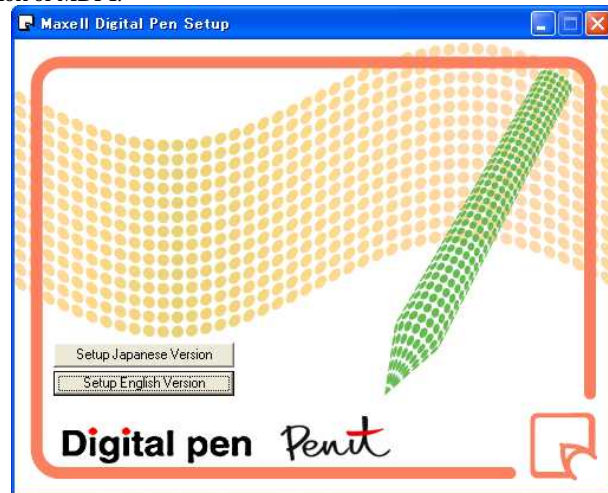
Indicator	Status of digital pen
Blinks green	The charger is connected and the battery is being charged. (If the battery has no remaining charge, it will take approx. 10 minutes for the battery indicator to blink green after charging has started.)
Green	Charging is complete, and the charger is still connected.
Off	Charging is complete, and the charger has been disconnected.
Blinks green slowly	The battery has about 20 minutes of power remaining. Charge the battery as soon as possible.
Blinks red slowly	The battery is almost dead. Recharge immediately.

Installing the software to PC

Caution

- The "Maxell Digital Pen Infrastructure" (MDPI) setup program can only be installed by an administrator. To install the program, log on to the computer as an administrator.
- It may be necessary to restart your computer after installing the "Maxell Digital Pen Infrastructure." Be sure to save the documents you are working on before doing so.
- Disconnect the Maxell Digital Pen from the computer. Do not connect the digital pen to the computer until installation has been completed.
- Be sure to shut down all application programs running on the computer.

1. Insert the CD-ROM into the CD-ROM Drive. The window below should automatically appear on your computer screen. If not, please click on your CD-ROM icon, "MDPID_XXXXXX" to run the setup or setup.exe. Click on the "Setup English Version" to install the English version of MDPI.



2. In order for you to install the MDPI, .NET Framework 1.1 is required. The window below will appear automatically if .NET Framework 1.1 is not installed on your computer. Choose "I agree" for the license agreement and click on "Install". When the installation is completed, the next window will appear.



If your system already has .NET Framework 1.1, then the process in number 2 will be skipped and the next window will automatically appear. Please follow instructions in 3.

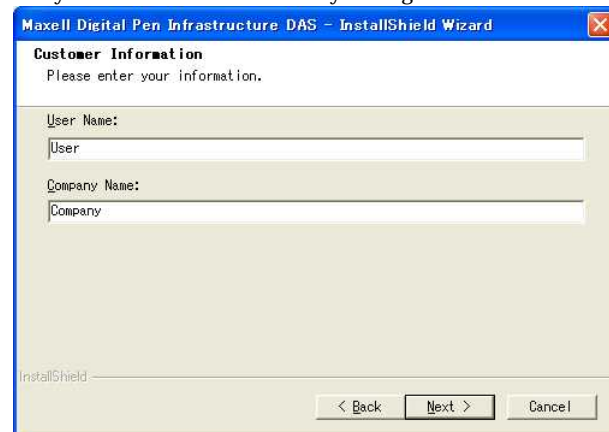
3. Follow instructions described in the InstallShield Wizard. Click "Cancel" to quit the Setup program. Clicking on "Next" will take you to the following window.



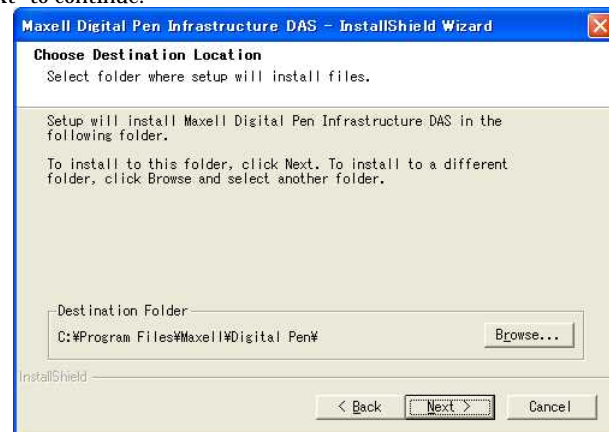
4. Read the license agreement carefully and click on "Yes", if you agree.



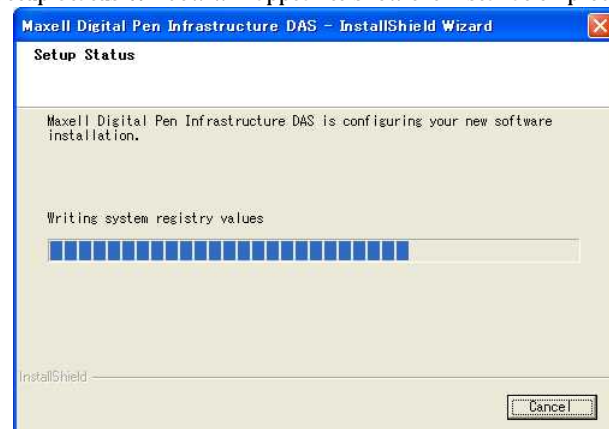
5. Enter your name and the name of your organization.



6. If there is any specific location where you want to install your MDPI, browse through and choose the destination folder. Otherwise MDPI will be installed in the location indicated as the destination folder at the bottom. (Example: C:\Program Files\Maxell\Digital Pen) Click on "Next" to continue.



7. Setup Status Window will appear to show the installation process.



8. When the MDPI installation is complete, the window below will appear. Click on "Finish" to get out of the InstallShield Wizard.



Major Specifications

Models	DP-201 : Bluetooth + USB model
Weight	30g
Dimensions	157 x 21 x 18 mm (with a cap, except a clip) 153 x 19 x 17 mm (without a cap)
Data communication	Bluetooth 1.2 standard USB 2.0 standard (transfer rate : 12Mbps)
Operating temperature	0 to 40°C (with no condensation)
Built-in battery	Lithium-ion rechargeable battery
Operation time	2 hours or longer
Standby time	10 hours (min.) without a cap
Charging time	Approx. 2.5 hours
Charging method	Via cradle (AC adapter/USB)

System Requirements

CPU	Pentium III or compatible CPU 500MHz or faster
OS	Windows 2000 Professional SP4 (English version) or later Windows XP Professional / Home Edition SP1 (English version) or later

FCC WARNING

Changes or modifications not expressly approved by the party responsible for compliance could void the user's authority to operate the equipment.

NOTICE

This equipment has been tested and found to comply with the limits for a class B digital device, pursuant to part 15 of the FCC Rules. These limits are designed to provide reasonable protection against harmful interference in a residential installation.

This equipment generates, uses and can radiate radio frequency energy and, if not installed and used in accordance with the instructions, may cause harmful interference to radio communications. However, there is no guarantee that interference will not occur in a particular installation. If this equipment does cause harmful interference to radio or television reception, which can be determined by turning the equipment off and on, the user is encouraged to try to correct the interference by one or more of the following measures:

- Reorient or relocate the receiving antenna.
- Increase the separation between the equipment and receiver.
- Connect the equipment into an outlet on a circuit different from that to which the receiver is connected.
- Consult the dealer or an experienced radio/TV technician for help.

This device complies with Part 15 of FCC Rules and RSS-Gen of IC Rules. Operation is subject to the following two conditions: (1) this device may not cause interference, and (2) this device must accept any interference, including interference that may cause undesired operation of this device

About the RF Exposure

- This transmitter must not be co-located or operated in conjunction with any other antenna or transmitter.
- This equipment complies with FCC / IC radiation exposure limits set forth for uncontrolled equipment and meets the FCC radio frequency (RF) Exposure Guidelines in Supplement C to OET65 and RSS-102 of the IC radio frequency (RF) Exposure rules. This equipment has very low levels of RF energy that it is deemed to comply without testing of specific absorption ratio (SAR).

- This class B digital apparatus complies with Canadian ICES-003.
- Cet appareil numérique de la classe B est conforme a la norme NMB-003 du Canada.

DECLARATION OF CONFORMITY

We, **Hitachi Maxell, Ltd.** of
6139-1, Ohnogo, Joso-shi, Ibaraki 300-2595, Japan

declare under our sole responsibility that the production

Digital Pen Model DP-201

to which this declaration relates is in conformity with the following standards

- EN60950-1, 2001 (Safety)
- EN55022:1998 Class B (EMI)
- EN55024:1998 (EMS)
- EN301 489-17 V1.2.1:2002 ,EN301 489-1 V1.4.1:2002 (EMC)
- EN300 328-2 V1.6.1:2004 (EMI)

Following the provision of R&TTE Directive 1999/5/EC



**LED RADIATION
DO NOT VIEW DIRECTLY
WITH OPTICAL INSTRUMENTS
CLASS 1 LED PRODUCT**

Disposal of Old Electrical & Electronic Equipment (Applicable in the European Union and other European countries with collection systems)



This symbol on the product or on its packing indicates that this product shall not be treated as household waste. Instead it shall be handed over to the applicable collection point for the recycling of electrical and electronic equipment. By ensuring this product is disposed of correctly, you will help prevent potential negative consequences for the environment and human health, which could otherwise be caused by inappropriate waste handling of this product. The recycling of materials will help to conserve natural resources. For more

detailed information about recycling of this product, please contact your local city office, your household waste disposal service or the shop where you purchased the product.

Bluetooth Information

The Bluetooth Qualification information of this product could be referred to Bluetooth identifier B02173.)

Trademark Notice

- Anoto and the Magic Box are trademarks owned by the company Anoto.
- Bluetooth and Bluetooth logo are the trademark of Bluetooth Sig., Inc. Our company is a member of Bluetooth Sig.
- Windows is the trademark of Microsoft Corporation in the United States and/or other countries
- Pentium is the trademark of Intel Corporation.
- All company names, brand names and product names are trademark or registered trademark of each company.