

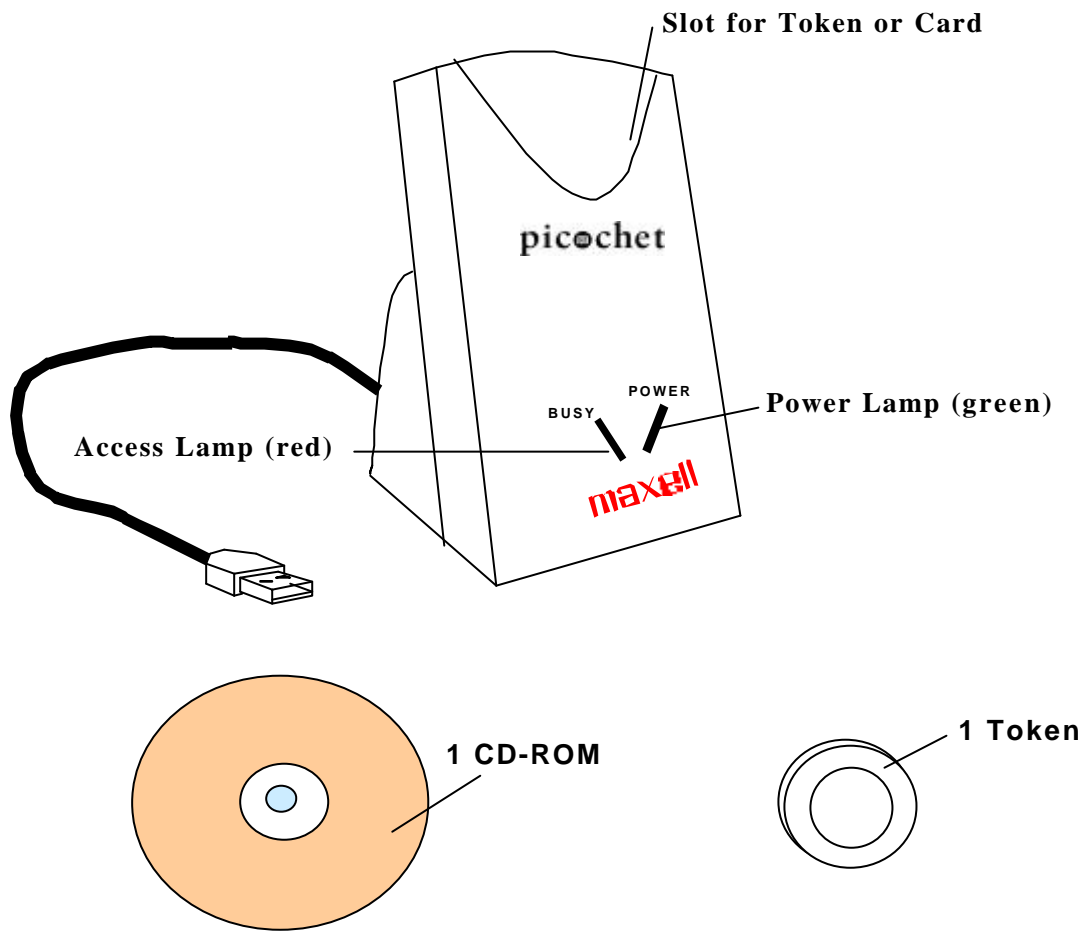
Manual

picochet Reader/Writer

ME-P1000-U

1. Device Driver Installation
2. Re-Installation of the picochet device driver
3. Installation of the picochet Utility Software
4. Uninstallation of the picochet Utility Software
5. How to use the picochet utility software
6. Specification

Notice



1. Device Driver Installation

Plug the picochet to USB port of PC. Due to some reason not known yet, there are some cases where communication between the picochet and PC does not work well when there is a hub placed between the picochet and the root hub. So place the unit directly to the root hub that's placed in the main case of PC. Consult the PC manual for the location of USB root hub in your PC.



Once the picochet is plugged into USB port, follow the steps below to install the appropriate device driver.

In a short while, screen message claiming 'New device is detected' will be displayed as shown below. Click on "Next" button.



Click on the "Next" button.



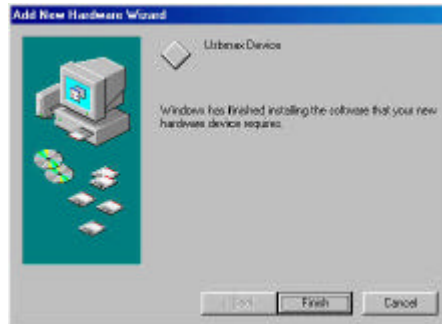
When a screen message shown below appears, insert the floppy diskette(Disk1) containing USB Device Driver into the floppy disk drive, select Floppy disk drives, and then click on the "Next" button.



Click on the "Next" button, when another message shown below appears.



Click on the "Finish" button, when another message shown below appears on your PC monitor.



At this time, if PC recognizes the picochet properly, green "Power" LED of the picochet will be lit, and the device driver installation for the Reader/Writer for the picochet is finished.

Cases where the picochet is not recognized by PC

Even if the picochet is properly connected to USB port of PC, the cases where Add New Hardware Wizard does not get executed, are usually due to the fact that USB port is not configured to be usable in PC configuration.

Follow the steps below to make USB port usable.

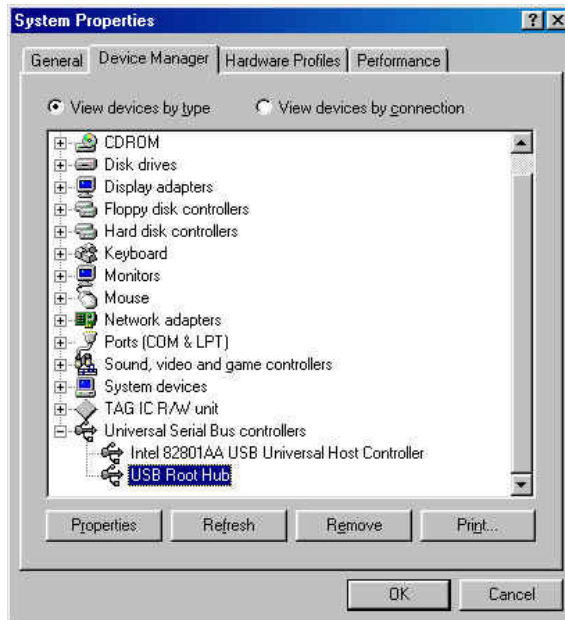
Select Control Panel by selecting Settings from Start menu.

Select System from Control Panel.

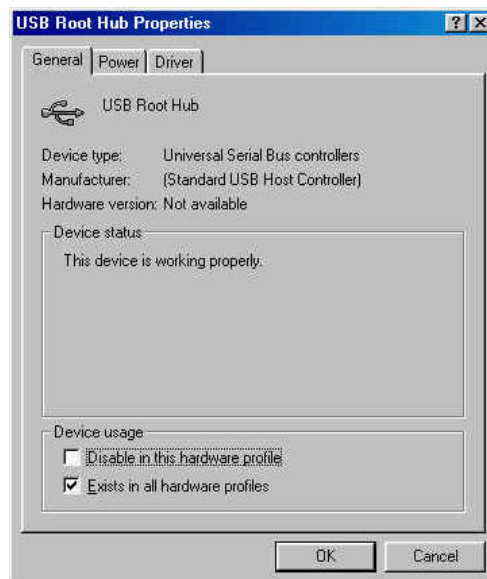


As shown below, select Device Manager folder and click on "View by devices type" which is just below folder names. And then, double-click on the item

called Universal Serial Bus Controllers. Below Universal Serial Bus Controllers, USB Universal Host Controller and USB Root Hub will appear.



Double-click on USB Universal Host Controller and another screen that is shown below appears. Choose a general folder and there'll be device usage at the bottom. On the device usage, make certain that it's left blank next to 'Disable in this hardware profile' and check the next to 'Exists in all hardware profiles' as shown. And then select OK.



After PC is restarted, USB port becomes usable.

2.Re-Installation of the picochet device driver

Steps to re-install the picochet new device driver

In case where the current version of driver is needed, save files that are directed to delete, in some other folder, instead of just deleting them

Delete C:¥Windows¥INF¥Other¥Hitachi Maxell, Ltd.Usbmax.inf

Delete C:¥Windows¥SYSTEM32¥DRIVERS¥Usbmax.sys

Select Run on the Start menu, and then enter 'regedit' to open registry editor.

Delete HKEY_LOCAL_MACHINE¥Enum¥USB¥VID_0858&PID_1101

Delete HKEY_LOCAL_MACHINE¥System¥CurrentControlSet¥Services
¥Class¥Usbmax

Empty out Recycle Bin

Restart the PC

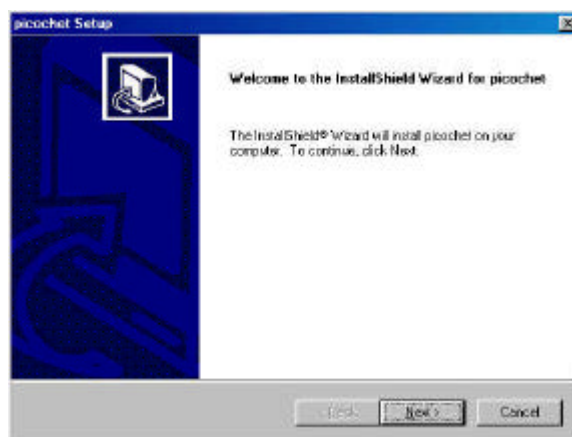
Installation screen appears on PC monitor and if you select a folder where the driver was installed previously, the installation of the driver is initiated. Follow the instruction displayed on the PC monitor, while installing.

If device manager in system folder from Control Panel displays Tag IC R/W unit, device driver installation is completed without any errors. However, if Tag IC R/W unit is not displayed, repeat the steps from the beginning until Tag IC R/W unit is displayed.

This concludes installation of Device Driver.

3.Installation of the picochet Utility Software

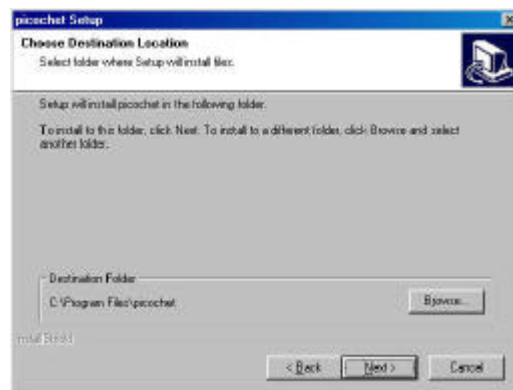
Insert a diskette labeled 'Disk 1' into floppy disk drive, and double-click on 'setup.exe', wait a while. Click on "Next" button when screen shown below appears.



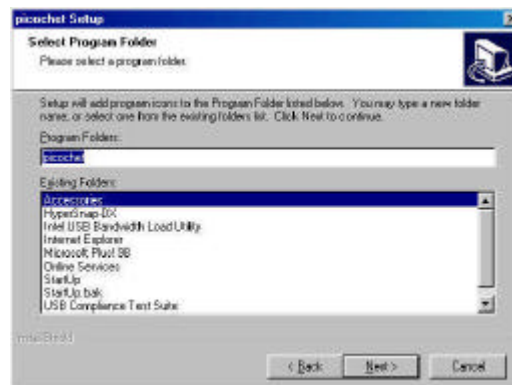
Click on "Yes(Y)" button when screen shown below appears.



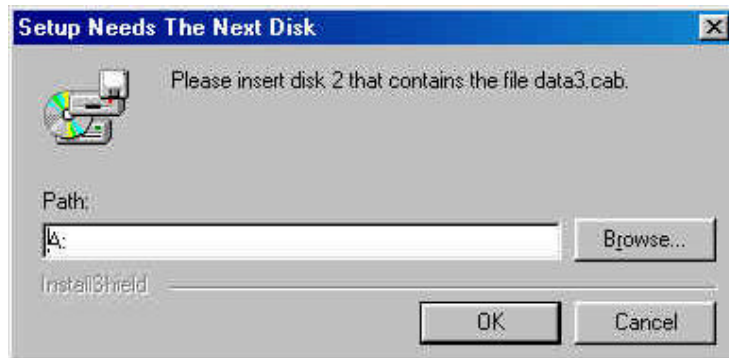
Select a folder to install the software, and click on "Next" button after making the selection, when screen shown below appears on the monitor.



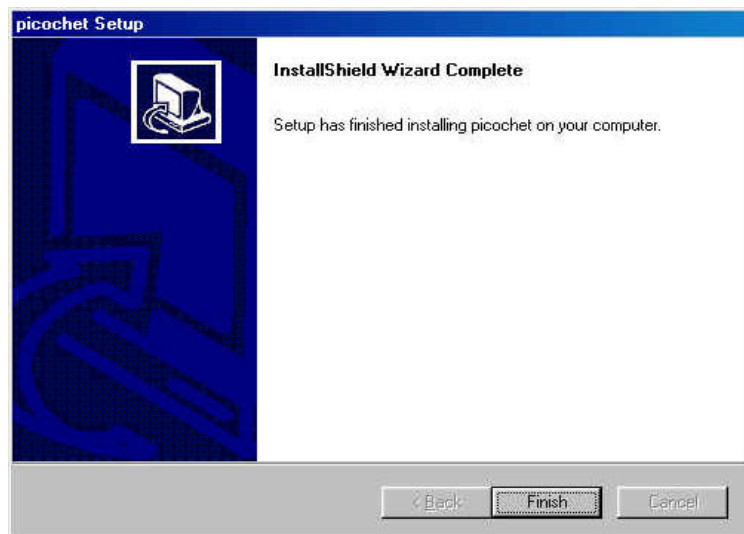
Click on "Next" button when screen shown below appears.



After a little while, a screen asking to insert Disk 2 appears, Insert the diskette (Disk2) into floppy disk drive and click on "OK" button.



Click on "Finish" button when screen shown below appears.

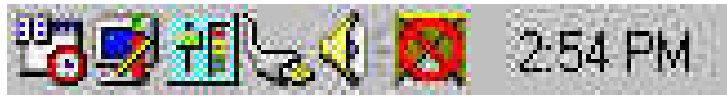


This concludes the installation of the picochet utility software.

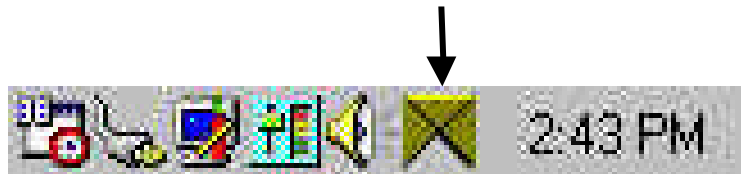
Remove diskette from floppy disk drive and restart the system. When the system is restarted, an icon will be added in Task Bar as shown below. Depending upon the state of picochet, shape of icon will change accordingly.

When the picochet is not connected to PC

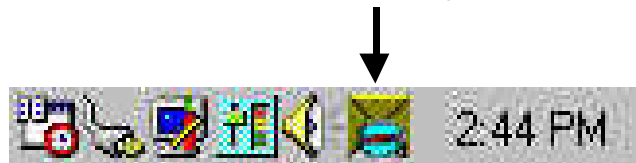




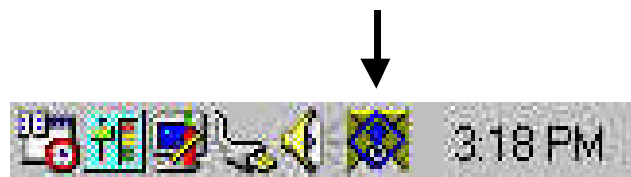
When the picochet is connected to PC, however, any Token/Card is not placed into the picochet



When the picochet is connected to PC, and tag is placed into the picochet



When the picochet is connected to PC, and Token/Card is in a edit state, or in a state where PC just woke up from sleep mode



4.Uninstallation of the picochet Utility Software

Select Control Panel by selecting Settings from Start menu.

Once a screen shown below appeared, you double-click on 'Add/Remove Programs' from Control Panel.



Select "picochet" by clicking on it and proceed to clicking on "Add/Remove" button, and then uninstalling the software starts right away. After uninstalling the software, press "OK" button to close "Add/Remove programs properties" screen.



Restart the PC.

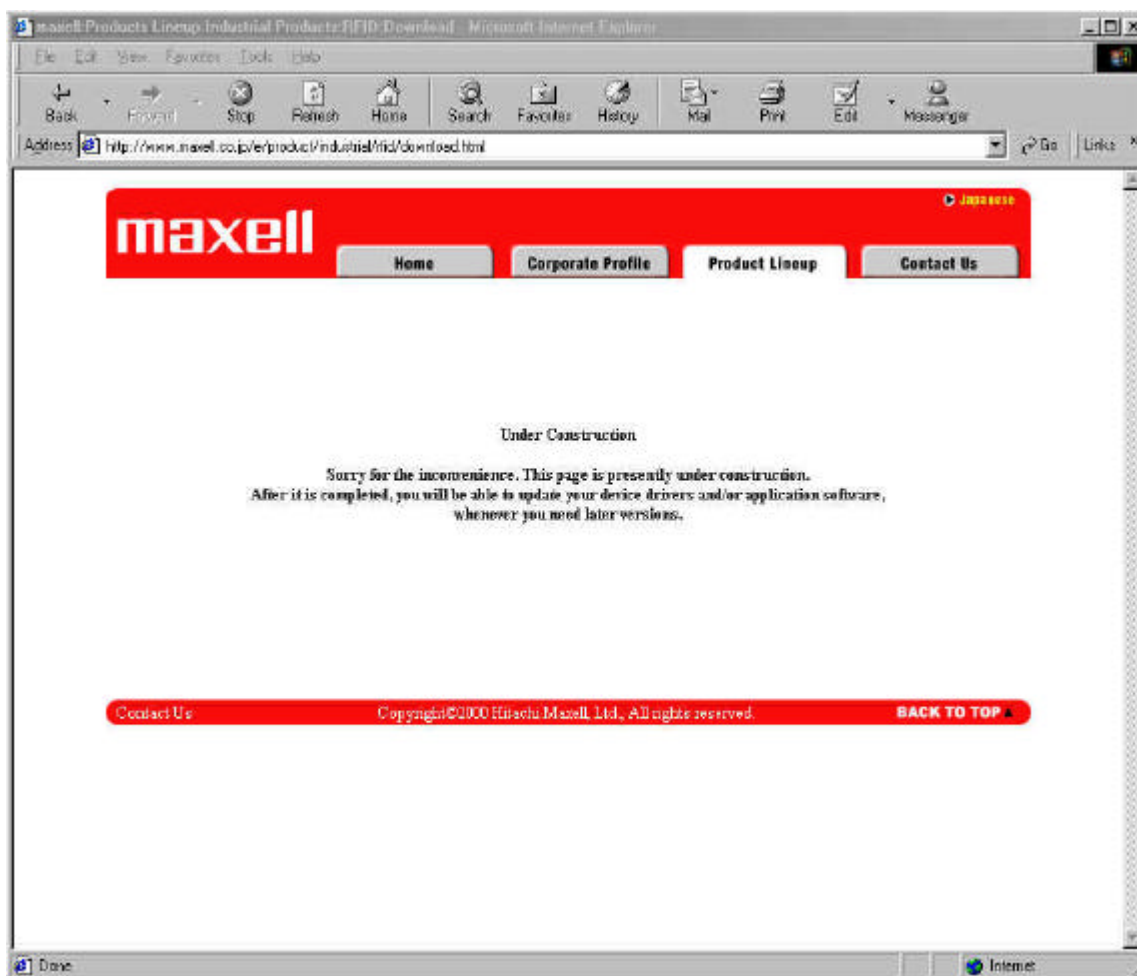
This concludes uninstalling the utility software.

5.How to use the picochet utility software

Access the Internet

Insert the Token/Card that comes with the software into the picochet, and the default Internet browser software is executed and automatically access the home page for downloading software from Maxell.

http://www.maxell.co.jp/products/industrial/rfid/download.html



If you are a member of the Internet service where you have to use the Internet browser software provided from them, such as AOL, insert the Token/Card after you accessed the Internet.

Detailed Information in the Token/card

Click on the icon in Task Bar and a screen shown below will appear on your monitor.



Select "Edit window" to open detailed information in Token/Card.

The screenshot shows a Windows-style dialog box titled "picochet Ver1.22-Editing Data in Tag". It contains the following fields and controls:

- Name: [] [] Age: [] Date of Birth: [] [] []
- Telephone No: [] - [] - [] Fax No: [] - [] - []
- Sex: Select to Enter Sex Man Woman
- Blood Type: Select to Enter Blood Type A B AB
- Marital Status: Select to Enter Marital status Married Single
- Postal Code(ZIP Code): [] Provincial Code: []
- City Code: [] Street No.Code: []
- Purchase Date(something of any importance): []
- Medical Insurance Policy No: [] Personal ID No(if any): []
- Automobile No: [] Social Security No: []
- Driver's License No: [] Passport No: []
- Credit Card No: [] Life Insurance Policy No: []
- Logon Name to log onto the Internet: [] Password associated with the above logon name: []
- E-mail address (personal): [] E-mail address (company): []
- Home-Page address (personal): []
- Home-Page address (company): []
- Buttons: "Read" and "Cancel"

Clicking on 'Read' button will display information stored in the Token/Card.

User can not write personal data into Token/Card with current version of the software. The version that will allow it will be uploaded into the download site, and the blank Token/Card that users are allowed to write into, will be marketed around at the end of year 2000.

Notes: The edit screen that is shown above is standard format of Maxell's.

Terminating the utility software for the picochet

To terminate the utility software for the picochet, click on the icon in Task Bar and select Exit. A screen show below will appear, then select "OK" button.



Once "OK" button is clicked, icon in Task Bar will disappear, and even if you insert a Token/Card into the picochet, nothing happens.

To re-initiate the utility software, start from Start menu, going from Start -> Program -> picochet icon. If you follow the steps just mentioned, icon will re-appear in Task Bar.

6.Specification

Host Interface	USB
OS	Window 98
Media	Picochet Card Picochet Token (Memory 108 byte)
Power consumption	Approx. 1.5W (maximum current 500mA) While read or write
Length of cable	Approx. 2m
Size	Approx. 6.5x6.5x10cm
Soft Ware	USB Device Driver Application soft
Working environment	Temperature:0 ~ 40 Humidity:20 ~ 80%
Storage environment	Temperature:-10 ~ 60 Humidity:20 ~ 80 %

Notice:

This equipment has been tested and found to comply with the limits for a Class B digital device, pursuant to part 15 of the FCC Rules. These limits are designed to provide reasonable protection against harmful interference in a residential installation. This equipment generates, uses and can radiate radio frequency energy and, if not installed and used in accordance with the instructions, may cause harmful interference to radio communications. However, there is no guarantee that interference will not occur in a particular installation.

If this equipment does cause harmful interference to radio or television reception, which can be determined by turning the equipment off and on, the user is encouraged to try to correct the interference by one or more of the following measures:--Reorient or relocate the receiving antenna.

- Increase the separation between the equipment and receiver.**
- Connect the equipment into an outlet on a circuit different from that to which the receiver is connected.**
- Consult the dealer or an experienced radio/TV technician for help.**

Operation is subject to the following two conditions;

- (1) this device may not cause interference, and**
- (2) this device must accept any interference, including interference that may cause undesired operation of the device.**