

HOBART

FOOD EQUIPMENT

**FT-800 SERIES
DISHWASHER****FT-800 SERIES
DISHWASHER WITH
ELECTRO-
MECHANICAL
CONTROLS****OUTSTANDING
STANDARD FEATURES**

- Energy saving low water consumption design—5.7 GPM Hot Water (180°F); 3.9 GPM Low Temp (140°F).
- Stainless steel construction including frame, legs, feet, drain piping, wash arms.
- Electro-mechanical controls in top mounted stainless steel control center.
- 36" Load/Unload height.
- Energy efficient convertible hot water or low temp/chemical sanitizing.
- Door actuated drain closers.
- Sealed dial type thermometers for wash—power rinse—final rinse—temperature indication.

- Water and energy saving design through reduced water and tank heat usage and automatic pump shut down control through conveyor.
- Common water, drain, electric and steam connections.
- Exclusive load end flush system.
- Built-in integral wiring channel.
- Automatic temperature control and positive low-water heater and pump seal protection.
- Built-in inherent motor overload protection with manual reset.
- Built-in vent ducts—dampers and drip control.
- Improved washability with high pressure prewash—wash and power rinse systems.
- Compact modular design.
- 115 volt pilot circuit.
- Lower prewash arm.
- Automatic initial fill.

- Wash arms easily installed and removed without tools.
- All function components (motors, drains, etc.) located on operators side of dish-machine for accessibility and ease of maintenance.
- Built-in integral prewash water replenishment system.
- Final rinse actuator.
- Removable self-flushing stainless steel strainer pans and large deep scrap buckets for each tank.
- Door interlocks on all doors.
- Optional energy saving blower-dryer.

Electric 20 KW—63% energy reduction.

Steam 75 lbs./hr.—56% energy reduction.

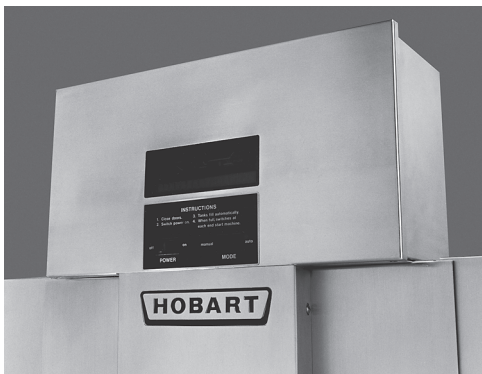
- Choice of electric, steam injection or steam coil heat.

Specifications, Details, Dimensions and Connections inside.



FT-800 SERIES DISHWASHER

STANDARD DESIGN FEATURES



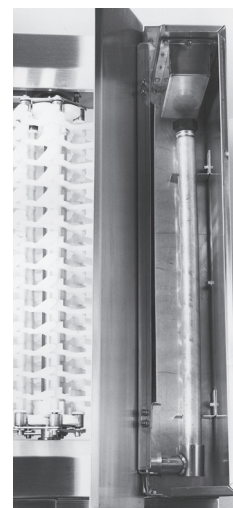
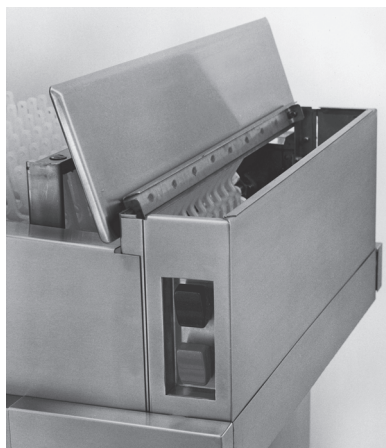
TOP MOUNTED CONTROL PANEL – Controls in top-mounted stainless steel control center with master On/Off Power Switch.



WASH ARMS – Computer-designed prewash, wash and power rinse arms. Arms designed so they can be installed **only** in correct position.



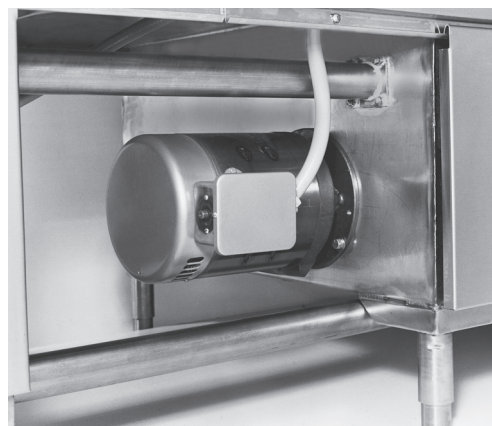
STOP/START PUSH BUTTONS – Recessed, side located waterproof Start/Stop push buttons and flip-up hinged dishware platform on both ends of dishwasher.



FLUSH DOWN – Exclusive load end flush down system.

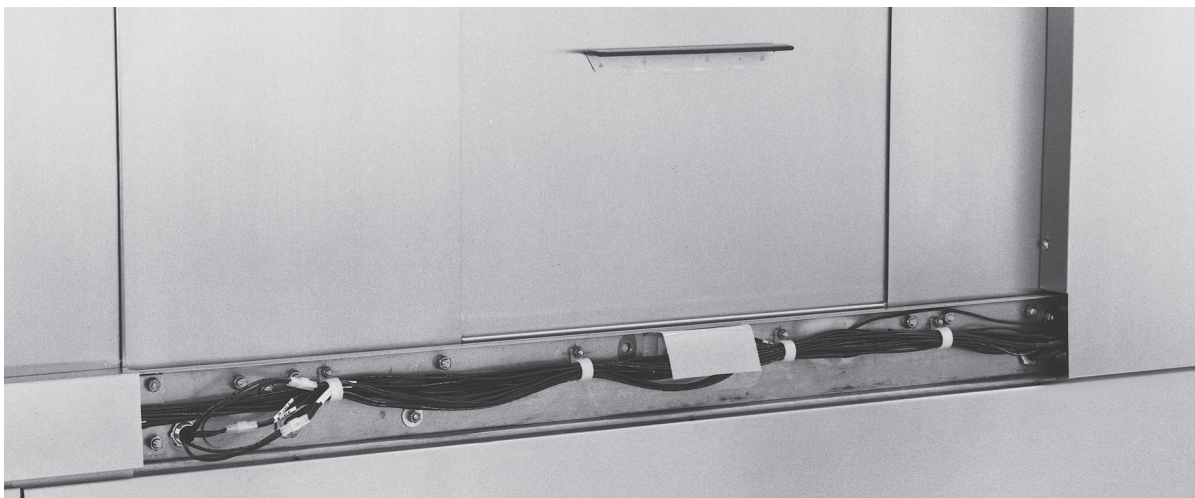


DRAIN CLOSERS – Door operated drain closers . . . front located drains, stainless steel tank overflow tubing to prewash, and final rinse water feed piping.



PUMP – Self-draining Hobart pump motors with inherent motor protection and manual overload reset push buttons on each motor.

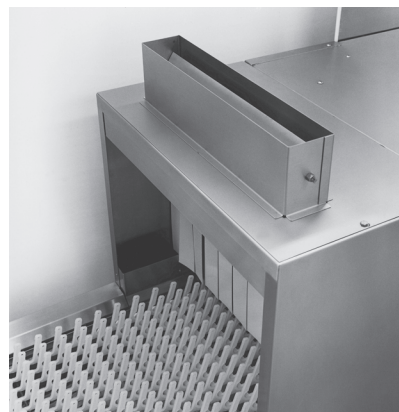
FT-800 SERIES DISHWASHER



WIRING CHANNEL – Built-in integral wireway above tank water level.



SCRAP PANS – Large one-piece sloped scrap screens and deep removable recessed scrap buckets for prewash, wash and power rinse tanks.



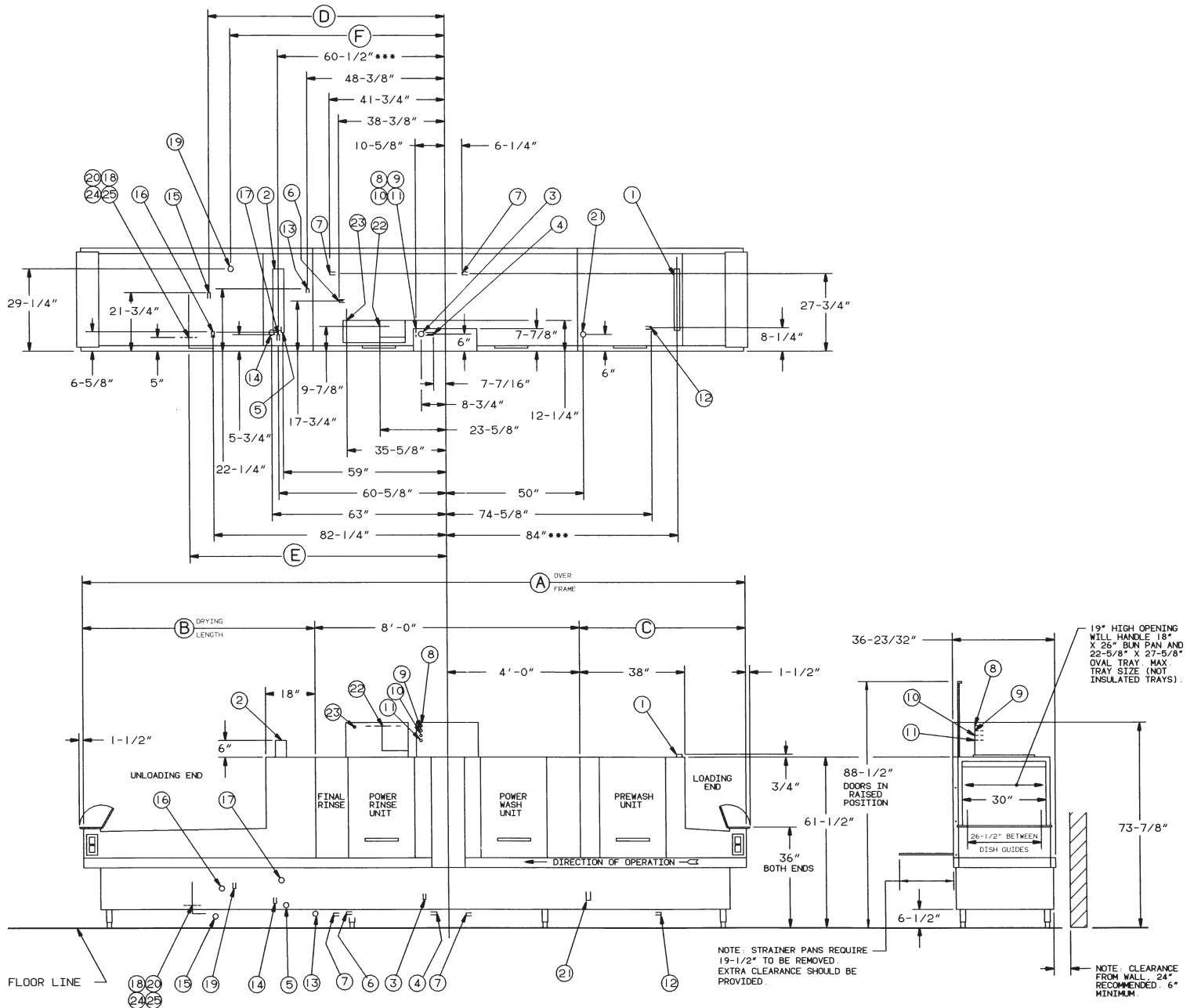
VENT DUCTS – Built-in vent ducts with adjustable dampers and drip shield on each end of dishwasher. 2" x 24" load end and 4" x 24" discharge end (inside dimensions).



POSITIVE LOW WATER PROTECTION – Solid state positive low water protection for tank heaters.

FT-800 SERIES DISHWASHER

DETAILS, DIMENSIONS AND CONNECTIONS RIGHT TO LEFT OPERATION



MODEL NO.	A	B	C	DIM D STEAM BOOSTER			ELECTRIC BOOSTER			
							W/O CIRCUIT BREAKER		W / CIRCUIT BREAKER	
				NO. 260	NO. 320	NO. 380	DIM E	DIM F	DIM E	DIM F
FT(M)-818 (5-8-5)	18'-0"	5'-0"	5'-0"	84-5/8"	NOT APPLICABLE	NOT APPLICABLE	66-7/8"	82-1/8"	55-3/4"	82-1/8"
FT(M)-820 (7-8-5)	20'-0"	5'-0"	7'-0"	84-5/8"	NOT APPLICABLE	NOT APPLICABLE	66-7/8"	82-1/8"	55-3/4"	82-1/8"
FT(M)-820 (5-8-7)	20'-0"	7'-0"	5'-0"	84-5/8"	90"	94-7/8"	84-7/8"	100-1/8"	73-3/4"	100-1/8"
FT(M)-822 (7-8-7)	22'-0"	7'-0"	7'-0"	84-5/8"	90"	94-7/8"	84-7/8"	100-1/8"	73-3/4"	100-1/8"
FT(M)-822 (5-8-9)	22'-0"	9'-0"	5'-0"	84-5/8"	90"	94-7/8"	84-7/8"	100-1/8"	73-3/4"	100-1/8"
FT(M)-824 (7-8-9)	24'-0"	9'-0"	7'-0"	84-5/8"	90"	94-7/8"	84-7/8"	100-1/8"	73-3/4"	100-1/8"
FT(M)-824 (5-8-11)	24'-0"	11'-0"	5'-0"	84-5/8"	90"	94-7/8"	66-7/8"	82-1/8"	55-3/4"	82-1/8"
FT(M)-826 (7-8-11)	26'-0"	11'-0"	7'-0"	84-5/8"	90"	94-7/8"	66-7/8"	82-1/8"	55-3/4"	82-1/8"

FT-800 SERIES DISHWASHER

CONNECTION INFORMATION

AFF-ABOVE FINISHED FLOOR

- ① CUSTOMERS VENT CONNECTION, LOADING END:
MUST FIT INSIDE 2" X 24" VENT STACK
500 CFM EXHAUST REQUIRED. 62-1/4" AFF ***
- ② CUSTOMERS VENT CONNECTION, UNLOADING END:
MUST FIT INSIDE 4" X 24" VENT STACK
1000 CFM EXHAUST REQUIRED. 67-1/2" AFF ***
- ③ FILL CONNECTION, (FTM-800 AUTOMATIC FILL)
(FT-800 AUTOMATIC INITIAL FILL)
3/4" F.P.T., 140" WATER NO BOOSTER SPECIFIED
10" AFF **
- ④ COMMON HOT WATER CONNECTION,
(FTM-800 AUTOMATIC FILL),(FT-800 AUTOMATIC
INITIAL FILL) WHEN STEAM OR ELECTRIC
BOOSTER IS SPECIFIED 1" F.P.T., 140" WATER MINIMUM
5-5/16" AFF **,****
- ⑤ FINAL RINSE CONNECTION,
WHEN NOT SUPPLIED WITH BOOSTER WATER HEATER:
3/4" F.P.T., 180" WATER MINIMUM. 8" AFF****
- ⑥ STEAM CONNECTION, REGULATED TANK HEAT.
1" F.P.T., (50 PSI MAX. 15-25 FLOWING
PRESSURE), NO BOOSTER SPECIFIED. 5-1/4" AFF *
- ⑦ CONDENSATE RETURN, (GRAVITY CONNECTION)
WHEN STEAM COILS ARE SPECIFIED:
3/4" F.P.T., BUCKET TYPE TRAPS
FURNISHED. 2 CONNECTIONS. 4-3/4" AFF
- ⑧ ELECTRIC HEAT CONNECTION,
WHEN ELECTRIC TANK HEAT IS SPECIFIED:
1" CONDUIT, 23,000 WATTS. 72-5/8" AFF
- ⑨ ELECTRIC HEAT CONNECTION,
WHEN ELECTRIC TANK HEAT IS SPECIFIED:
1" CONDUIT, 23,000 WATTS. 70-7/8" AFF
- ⑩ ELECTRIC CONNECTION, MOTORS AND CONTROLS
1" CONDUIT. 69-1/8" AFF
- ⑪ ELECTRIC CONNECTION,
DETERGENT AND RINSE FEEDERS:
1/2" CONDUIT, 67-3/8" AFF
(MACHINE SERVICE VOLTAGE).
- ⑫ COMMON DRAIN CONNECTION, WHEN DRAIN TO
LOAD END IS SPECIFIED 2" F.P.T. 5" AFF
- ⑬ COMMON DRAIN CONNECTION, WHEN DRAIN TO
UNLOAD END IS SPECIFIED 2" F.P.T. 5" AFF
- ⑭ COMMON STEAM CONNECTION, WHEN TANK HEAT &
STEAM BOOSTER ARE SPECIFIED:
1-1/2" F.P.T., 8-5/8" AFF(50 PSI MAX. 15-25
FLOWING PRESSURE). *
- ⑮ CONDENSATE RETURN, (GRAVITY CONNECTION)
WHEN STEAM BOOSTER IS SPECIFIED:
3/4" F.P.T., BUCKET TYPE TRAP FURNISHED.
4" AFF
- ⑯ STEAM RELIEF VALVE,
WHEN STEAM BOOSTER IS SPECIFIED:
1" F.P.T., MUST BE PIPED TO OPEN DRAIN
RECEIVER IN THE FLOOR. 14" AFF
- ⑰ HOT WATER RELIEF VALVE,
WHEN STEAM BOOSTER IS SPECIFIED:
3/4" F.P.T., MUST BE PIPED TO OPEN DRAIN
RECEIVER IN THE FLOOR. 17" AFF
- ⑱ ELECTRIC CONNECTION,
WHEN 39 KW ELECTRIC BOOSTER IS SPECIFIED:
2" CONDUIT. 39,000 WATTS W/O CIRCUIT
BREAKER 8" AFF
- ⑲ PRESSURE TEMPERATURE RELIEF VALVE,
WHEN ELECTRIC BOOSTER IS SPECIFIED:
3/4" F.P.T., MUST BE PIPED TO OPEN DRAIN
RECEIVER IN THE FLOOR. 14" AFF
- ⑳ ELECTRIC CONNECTION:
WHEN 58.5 KW ELECTRIC BOOSTER IS SPECIFIED:
2" CONDUIT 58,500 WATTS W/O CIRCUIT BREAKER
8"AFF
- ㉑ COLD WATER CONNECTION:
WHEN PREWASH TEMPERATURE CONTROL OPTION IS
SPECIFIED 3/4" F.P.T., 10" AFF
- ㉒ ELECTRIC CONNECTION,
STEAM TANK HEAT AND MOTORS, WHEN CIRCUIT
BREAKER OPTION IS SPECIFIED 1" CONDUIT
72-1/8" AFF
- ㉓ ELECTRIC CONNECTION,
ELECTRIC TANK HEAT AND MOTORS, WHEN CIRCUIT
BREAKER OPTION IS SPECIFIED 2" CONDUIT
71-7/8" AFF
- ㉔ ELECTRIC CONNECTION,
WHEN 39 KW ELECTRIC BOOSTER IS SPECIFIED:
2" CONDUIT. 39,000 WATTS W/ CIRCUIT BREAKER
15-13/16" AFF
- ㉕ ELECTRIC CONNECTION,
WHEN 58.5 KW ELECTRIC BOOSTER IS SPECIFIED:
2" CONDUIT. 58,500 WATTS W/ CIRCUIT BREAKER
15-13/16" AFF

MOTORS AND CONTROLS INCLUDES STEAM HEAT (WHEN SPECIFIED) ONE (1) SERVICE CONNECTION REQUIRED AS SHOWN BELOW			
ELEC. SPECS.	RATED AMPS	MINIMUM SUPPLY CIRCUIT CONDUCTOR AMPACITY	MAXIMUM PROTECTIVE DEVICE
200-230/60/3	29.5	35	35
460/60/3	15.3	20	20

MOTORS	FT-800
PREWASH	2 H.P.
POWER WASH	3 H.P.
POWER RINSE	3 H.P.
CONVEYOR	1/2 H.P.

ELECTRIC TANK HEAT, POWER WASH & POWER RINSE (WHEN SPECIFIED) TWO (2) 23KW SERVICE CONNECTIONS REQUIRED EACH AS SHOWN BELOW			
ELEC. SPECS.	RATED AMPS	MINIMUM SUPPLY CIRCUIT CONDUCTOR AMPACITY	MAXIMUM PROTECTIVE DEVICE
200/60/3	66.4	90	90
	66.4	90	90
230/60/3	63.1	90	90
	63.1	90	90
460/60/3	31.6	45	45
	31.6	45	45

DISHWASHER MUST BE INSTALLED AND OPERATED ONLY
WITH CHEMICAL SANITIZING FEEDER THAT IS RECOG-
NIZED BY THE NATIONAL SANITATION FOUNDATION
FOR USE ON THIS MODEL DISHWASHER. LISTING OF
SUCH RECOGNIZED FEEDERS ARE ON FILE AT NATIONAL
SANITATION FOUNDATION, P.O. BOX 1468, ANN ARBOR,
MICHIGAN, 48105. (313) 769-8010.

**** WATER HAMMER ARRESTOR (MEETING ASSE-1010 STANDARD
OR EQUIVALENT) TO BE SUPPLIED (BY OTHERS) IN FINAL
RINSE WATER SUPPLY LINE AT SERVICE CONNECTION.

*** THIS DIMENSION IS SUBJECT TO NORMAL SHEET METAL
TOLERANCES.

** RECOMMENDED BUILDING FLOWING WATER PRESSURE TO THE
DISHWASHER IS 20-25 PSI. IF PRESSURES HIGHER THAN
25 PSI ARE PRESENT, A PRESSURE REGULATING VALVE
MUST BE SUPPLIED (BY OTHERS) IN THE WATER LINE TO
THE DISHWASHER.

• IF STEAM PRESSURE IS UNDER 15 PSI AT THE
DISHWASHER, CONTACT SALES ENGINEERING.

NOTE: FOR CONVENIENCE WHEN CLEANING, CUSTOMER SHOULD
INSTALL WATER TAP NEAR MACHINE WITH 30 FT. OF
HEAVY DUTY HOSE WITH SQUEEZE VALVE.

NOTE: ALL DIMENSIONS TAKEN FROM FLOOR LINE MAY INCREASE
1" OR DECREASE 1/2" WITH LEG ADJUSTMENT.

WARNING

ELECTRICAL AND GROUNDING CONNECTIONS
MUST COMPLY WITH THE APPLICABLE PORTIONS
OF THE NATIONAL ELECTRICAL CODE AND/OR
OTHER ELECTRICAL CODES.

PLUMBING CONNECTIONS MUST COMPLY WITH
APPLICABLE SANITARY, SAFETY AND PLUMBING
CODES.

CAUTION: CERTAIN MATERIALS INCLUDING
SILVER, ALUMINUM, AND PEWTER ARE ATTACKED
BY SODIUM HYPOCHLORITE (LIQUID BLEACH).



MODEL:
FT/FTM-800 SERIES
R-L OPERATION
E-186018
REV. F

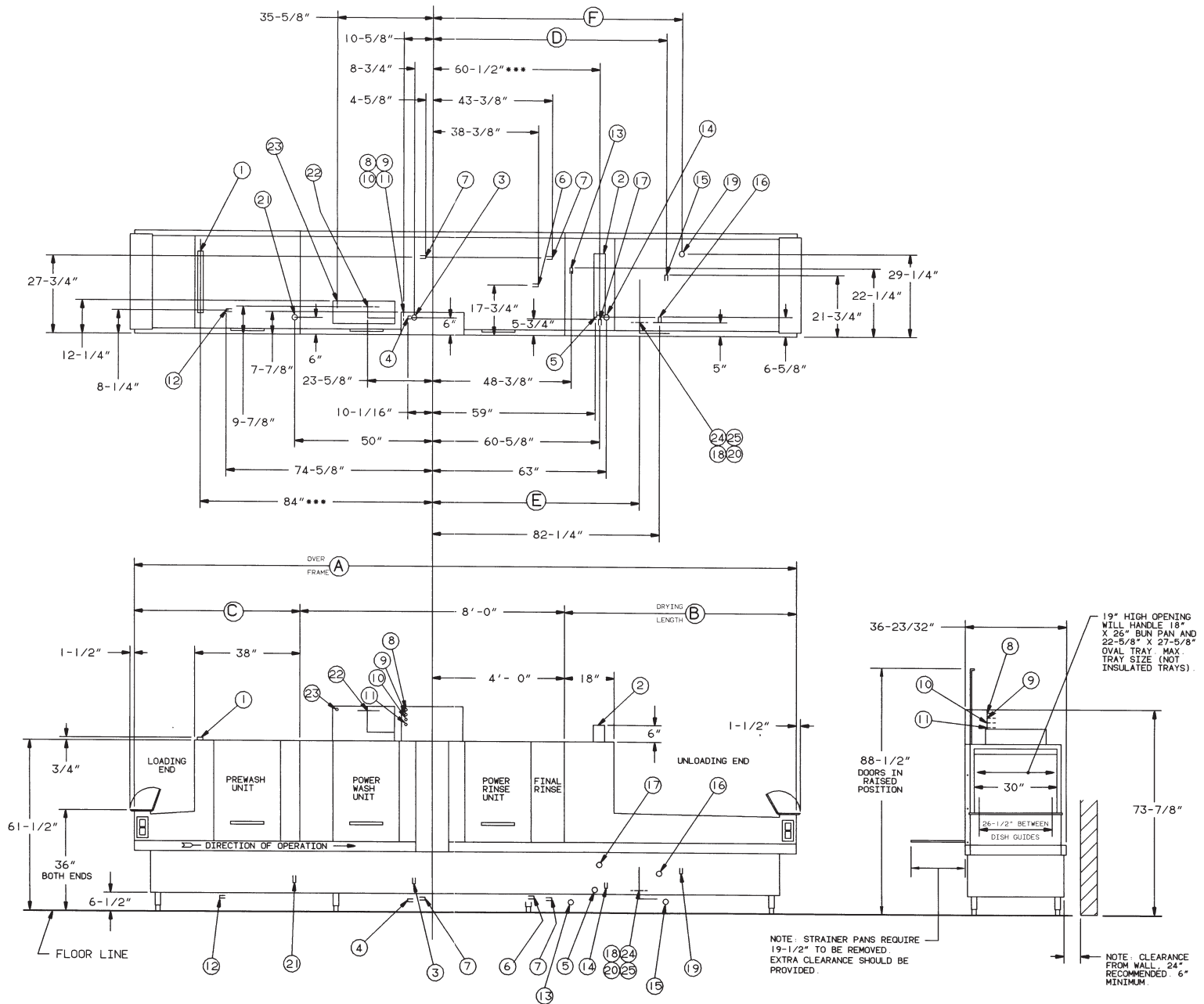


HOBART
CORPORATION

701 RIDGE AVENUE
TROY, OHIO 45374-0001

FT-800 SERIES DISHWASHER

DETAILS, DIMENSIONS AND CONNECTIONS LEFT TO RIGHT OPERATION



MODEL NO.	A	B	C	DIM D STEAM BOOSTER			ELECTRIC BOOSTER			
				NO. 260	NO. 320	NO. 380	W/O CIRCUIT BREAKER	W / CIRCUIT BREAKER	W/O CIRCUIT BREAKER	W / CIRCUIT BREAKER
				NO. 260	NO. 320	NO. 380	DIM E	DIM F	DIM E	DIM F
FT(M)-818 (5-8-5)	18'-0"	5'-0"	5'-0"	84-5/8"	NOT APPLICABLE	NOT APPLICABLE	66-7/8"	82-1/8"	55-3/4"	82-1/8"
FT(M)-820 (7-8-5)	20'-0"	5'-0"	7'-0"	84-5/8"	NOT APPLICABLE	NOT APPLICABLE	66-7/8"	82-1/8"	55-3/4"	82-1/8"
FT(M)-820 (5-8-7)	20'-0"	7'-0"	5'-0"	84-5/8"	90"	94-7/8"	84-7/8"	100-1/8"	73-3/4"	100-1/8"
FT(M)-822 (7-8-7)	22'-0"	7'-0"	7'-0"	84-5/8"	90"	94-7/8"	84-7/8"	100-1/8"	73-3/4"	100-1/8"
FT(M)-822 (5-8-9)	22'-0"	9'-0"	5'-0"	84-5/8"	90"	94-7/8"	84-7/8"	100-1/8"	73-3/4"	100-1/8"
FT(M)-824 (7-8-9)	24'-0"	9'-0"	7'-0"	84-5/8"	90"	94-7/8"	84-7/8"	100-1/8"	73-3/4"	100-1/8"
FT(M)-824 (5-8-11)	24'-0"	11'-0"	5'-0"	84-5/8"	90"	94-7/8"	66-7/8"	82-1/8"	55-3/4"	82-1/8"
FT(M)-826 (7-8-11)	26'-0"	11'-0"	7'-0"	84-5/8"	90"	94-7/8"	66-7/8"	82-1/8"	55-3/4"	82-1/8"

FT-800 SERIES DISHWASHER

CONNECTION INFORMATION

AFF-ABOVE FINISHED FLOOR

- ① CUSTOMERS VENT CONNECTION, LOADING END:
MUST FIT INSIDE 2" X 24" VENT STACK
500 CFM EXHAUST REQUIRED. 62-1/4" AFF ***
- ② CUSTOMERS VENT CONNECTION, UNLOADING END:
MUST FIT INSIDE 4" X 24" VENT STACK
1000 CFM EXHAUST REQUIRED. 67-1/2" AFF ***
- ③ FILL CONNECTION, (FTM-800 AUTOMATIC FILL)
(FT-800 AUTOMATIC INITIAL FILL)
3/4" F.P.T., 140" WATER NO BOOSTER SPECIFIED
10" AFF **
- ④ COMMON HOT WATER CONNECTION,
(FTM-800 AUTOMATIC FILL), (FT-800 AUTOMATIC
INITIAL FILL) WHEN STEAM OR ELECTRIC
BOOSTER IS SPECIFIED 1" F.P.T., 140" WATER MINIMUM
5-5/16" AFF **, *****
- ⑤ FINAL RINSE CONNECTION,
WHEN NOT SUPPLIED WITH BOOSTER WATER HEATER:
3/4" F.P.T., 180" WATER MINIMUM. 8" AFF*****
- ⑥ STEAM CONNECTION, REGULATED TANK HEAT.
1" F.P.T., (50 PSI MAX. 15-25 FLOWING
PRESSURE), NO BOOSTER SPECIFIED. 5-1/4" AFF *
- ⑦ CONDENSATE RETURN, (GRAVITY CONNECTION)
WHEN STEAM COILS ARE SPECIFIED:
3/4" F.P.T., BUCKET TYPE TRAPS
FURNISHED. 2 CONNECTIONS. 4-3/4" AFF
- ⑧ ELECTRIC HEAT CONNECTION,
WHEN ELECTRIC TANK HEAT IS SPECIFIED:
1" CONDUIT, 23,000 WATTS. 72-5/8" AFF
- ⑨ ELECTRIC HEAT CONNECTION,
WHEN ELECTRIC TANK HEAT IS SPECIFIED:
1" CONDUIT, 23,000 WATTS. 70-7/8" AFF
- ⑩ ELECTRIC CONNECTION, MOTORS AND CONTROLS
1" CONDUIT. 69-1/8" AFF
- ⑪ ELECTRIC CONNECTION,
DETERGENT AND RINSE FEEDERS:
1/2" CONDUIT, 67-3/8" AFF
(MACHINE SERVICE VOLTAGE).
- ⑫ COMMON DRAIN CONNECTION, WHEN DRAIN TO
LOAD END IS SPECIFIED 2" F.P.T. 5" AFF
- ⑬ COMMON DRAIN CONNECTION, WHEN DRAIN TO
UNLOAD END IS SPECIFIED 2" F.P.T. 5" AFF
- ⑭ COMMON STEAM CONNECTION, WHEN TANK HEAT &
STEAM BOOSTER ARE SPECIFIED:
1-1/2" F.P.T., 8-5/8" AFF (50 PSI MAX. 15-25
FLOWING PRESSURE). *
- ⑮ CONDENSATE RETURN, (GRAVITY CONNECTION)
WHEN STEAM BOOSTER IS SPECIFIED:
3/4" F.P.T., BUCKET TYPE TRAP FURNISHED.
4" AFF
- ⑯ STEAM RELIEF VALVE,
WHEN STEAM BOOSTER IS SPECIFIED:
1" F.P.T., MUST BE PIPED TO OPEN DRAIN
RECEIVER IN THE FLOOR. 14" AFF
- ⑰ HOT WATER RELIEF VALVE,
WHEN STEAM BOOSTER IS SPECIFIED:
3/4" F.P.T., MUST BE PIPED TO OPEN DRAIN
RECEIVER IN THE FLOOR. 17" AFF
- ⑱ ELECTRIC CONNECTION,
WHEN 39 KW ELECTRIC BOOSTER IS SPECIFIED:
2" CONDUIT. 39,000 WATTS W/O CIRCUIT
BREAKER 8" AFF
- ⑲ PRESSURE TEMPERATURE RELIEF VALVE,
WHEN ELECTRIC BOOSTER IS SPECIFIED:
3/4" F.P.T., MUST BE PIPED TO OPEN DRAIN
RECEIVER IN THE FLOOR. 14" AFF
- ⑳ ELECTRIC CONNECTION:
WHEN 58.5 KW ELECTRIC BOOSTER IS SPECIFIED:
2" CONDUIT 58,500 WATTS W/O CIRCUIT BREAKER
8" AFF
- ㉑ COLD WATER CONNECTION:
WHEN PREWASH TEMPERATURE CONTROL OPTION IS
SPECIFIED 3/4" F.P.T., 10" AFF
- ㉒ ELECTRIC CONNECTION,
STEAM TANK HEAT AND MOTORS, WHEN CIRCUIT
BREAKER OPTION IS SPECIFIED 1" CONDUIT
72-1/8" AFF
- ㉓ ELECTRIC CONNECTION,
ELECTRIC TANK HEAT AND MOTORS, WHEN CIRCUIT
BREAKER OPTION IS SPECIFIED 2" CONDUIT
71-7/8" AFF
- ㉔ ELECTRIC CONNECTION,
WHEN 39 KW ELECTRIC BOOSTER IS SPECIFIED:
2" CONDUIT. 39,000 WATTS W/ CIRCUIT BREAKER
15-13/16" AFF
- ㉕ ELECTRIC CONNECTION,
WHEN 58.5 KW ELECTRIC BOOSTER IS SPECIFIED:
2" CONDUIT. 58,500 WATTS W/ CIRCUIT BREAKER
15-13/16" AFF

MOTORS AND CONTROLS INCLUDES STEAM HEAT (WHEN SPECIFIED) ONE (1) SERVICE CONNECTION REQUIRED AS SHOWN BELOW			
ELEC. SPECS.	RATED AMPS	MINIMUM SUPPLY CIRCUIT CONDUCTOR AMPACITY	MAXIMUM PROTECTIVE DEVICE
200-230/60/3	29.5	35	35
460/60/3	15.3	20	20

MOTORS	FT-800
PREWASH	2 H.P.
POWER WASH	3 H.P.
POWER RINSE	3 H.P.
CONVEYOR	1/2 H.P.

ELECTRIC TANK HEAT, POWER WASH & POWER RINSE (WHEN SPECIFIED) TWO (2) 23KW SERVICE CONNECTIONS REQUIRED EACH AS SHOWN BELOW			
ELEC. SPECS.	RATED AMPS	MINIMUM SUPPLY CIRCUIT CONDUCTOR AMPACITY	MAXIMUM PROTECTIVE DEVICE
200/60/3	66.4	90	90
	66.4	90	90
230/60/3	63.1	90	90
	63.1	90	90
460/60/3	31.6	45	45
	31.6	45	45

DISHWASHER MUST BE INSTALLED AND OPERATED ONLY WITH CHEMICAL SANITIZING FEEDER THAT IS RECOGNIZED BY THE NATIONAL SANITATION FOUNDATION FOR USE ON THIS MODEL DISHWASHER. LISTING OF SUCH RECOGNIZED FEEDERS ARE ON FILE AT NATIONAL SANITATION FOUNDATION, P.O. BOX 1468, ANN ARBOR, MICHIGAN, 48105. (313) 769-8010.

- **** WATER HAMMER ARRESTOR (MEETING ASSE-1010 STANDARD OR EQUIVALENT) TO BE SUPPLIED (BY OTHERS) IN FINAL RINSE WATER SUPPLY LINE AT SERVICE CONNECTION.
- *** THIS DIMENSION IS SUBJECT TO NORMAL SHEET METAL TOLERANCES.
- ** RECOMMENDED BUILDING FLOWING WATER PRESSURE TO THE DISHWASHER IS 20-25 PSI. IF PRESSURES HIGHER THAN 25 PSI ARE PRESENT, A PRESSURE REGULATING VALVE MUST BE SUPPLIED (BY OTHERS) IN THE WATER LINE TO THE DISHWASHER.
- IF STEAM PRESSURE IS UNDER 15 PSI AT THE DISHWASHER, CONTACT SALES ENGINEERING.

NOTE: FOR CONVENIENCE WHEN CLEANING, CUSTOMER SHOULD INSTALL WATER TAP NEAR MACHINE WITH 30 FT. OF HEAVY DUTY HOSE WITH SQUEEZE VALVE.

NOTE: ALL DIMENSIONS TAKEN FROM FLOOR LINE MAY INCREASE 1" OR DECREASE 1/2" WITH LEG ADJUSTMENT.

WARNING

ELECTRICAL AND GROUNDING CONNECTIONS MUST COMPLY WITH THE APPLICABLE PORTIONS OF THE NATIONAL ELECTRICAL CODE AND/OR OTHER ELECTRICAL CODES.

PLUMBING CONNECTIONS MUST COMPLY WITH APPLICABLE SANITARY, SAFETY AND PLUMBING CODES.

CAUTION: CERTAIN MATERIALS INCLUDING SILVER, ALUMINUM, AND PEWTER ARE ATTACKED BY SODIUM HYPOCHLORITE (LIQUID BLEACH).



MODEL:
FT/FTM-800 SERIES
L-R OPERATION
E-186017
REV. E



701 RIDGE AVENUE
TROY, OHIO 45374-0001

FT-800 SERIES DISHWASHER



SPECIFICATIONS Listed by Underwriters Laboratories Inc. and National Sanitation Foundation.
Meets Requirements of A.S.S.E. Standard No. 1004.

DESIGN: Fully automatic, flight-type dishwasher machine, consisting of a 5' x 7' loading section with power recirculating prewash, an 8' power wash, power rinse and fresh water final rinse section, and a 5', 7', 9' or 11' drying and unloading section. Recirculating water prewash, power wash, power rinse, and final rinse compartments constructed with splash baffles and flexible plastic strip curtains for effective control and separation of spray systems. Specify high or low temperature operation.

CONSTRUCTION: Tank and chambers are heavy gauge stainless steel with No. 3 polish on appearance surfaces. Stainless steel frames, legs, and feet are standard. Three large inspection doors with welded handles.

PUMPS: Recirculating pumps with Ni-Resist impellers and face seal with stainless steel metal parts and ceramic seat. Readily removable motor-impeller assembly permits quick inspection. All pumps are self-draining.

MOTORS: Hobart-built, grease-packed ball bearings, splashproof design, ventilated with inherent overload protection in each motor. Recirculating prewash unit 2 H.P., power wash and power rinse 3 H.P. each, conveyor ½ H.P. Available in electrical specifications of 200-230/60/3 and 460/60/3 with manual reset.

CONTROLS: A stainless steel control center with Power "On/Off" switch is mounted on top of the center section. Controls use 115 volt pilot circuit. Recessed "Start/Stop" controls at each end of machine in stainless steel enclosure, factory wired. Electrical components are completely wired with 105°C, 600V thermoplastic insulated wire with stranded conductors routed through covered wireway built into the front of the machine above tank water level and UL Listed electrical metallic tubing or liquid-tight flexible metal conduit. Locking style electrical connectors are used for connections between machine sections. As an energy saving control feature, operation of pumps, final rinse and optional blower-dryer stop when conveyor stops.

FLIGHT TYPE CONVEYOR: Stainless steel side links, and tie rods and conveyor tracks. Injection molded, resilient Duraflex flight links to accommodate flatware and trays in preferred inclined position.

VAPOR CONTROL: Built in vent ducts with dampers and drip shields located on both ends of machine. Load end duct connection is 2" x 24" inside. Unload end duct connection is 4" x 24" inside.

RECIRCULATING PREWASH SECTION: Removes soil by means of recirculated water sprayed over dishes before they enter the power wash zone. The unit receives its water from two sources. The design provides for receiving all detergent overflow water from the wash tank and all the rinse tank overflow. Prewash compartment is fitted with stainless steel upper and lower wash arms having specially shaped

nozzles with large openings arranged to effectively remove soil from all types of ware. Prewash flushdown is supplied as standard. Large removable one-piece perforated stainless steel screen sloped downward to deep perforated stainless steel basket. Baskets and screens are removable from front of machine.

DRAIN AND OVERFLOW: Prewash tank equipped with bell type overflow and drain valve. Closing the inspection door will automatically close the drain valve.

POWER WASH AND POWER RINSE: Power wash and power rinse tanks are equipped with upper and lower stainless steel wash arms with specially-shaped nozzles having large openings and arranged to effectively direct water jets to all ware surfaces. Wash arms are easily removable without use of tools. Large one-piece removable perforated stainless steel screen sloped downward to deep perforated stainless steel baskets. Baskets and screens removable from front of machine.

DRAIN AND OVERFLOW: Power wash and power rinse overflow system directs water through internal connecting stainless steel tubing to prewash section. Drain valve is controlled from front of machine and is automatically closed by closing inspection door.

TANK HEATING: Power Wash tank and Power Rinse tank water temperatures are each thermostatically controlled. The tank heat with positive low water protection is automatically activated when the Power switch is turned "On." If the tank is accidentally drained, the low water protection device automatically turns the tank heat off. Select one of the optional heats listed under Optional Equipment—Tank Heating.

FINAL RINSE: Upper rinse arm has two rows of nozzles above and lower arm has one row of nozzles below dishware. Final rinse water line is equipped with vacuum breaker on downstream side of solenoid valve. Design provides for collection and division of final rinse water after use to power wash tank and power rinse tank. Sanitizer and rinse agent dispenser injection ports provided in final rinse piping above rinse chamber. Final rinse water saver "Rinse Gate" supplied as standard energy saving feature. Machine (line) voltage, fuse protected terminal provision for detergent and rinse agent dispensers.

CONVEYOR DRIVE UNIT: Powered by a Hobart-built, inherent overload protected ½ H.P. grease packed ball bearing motor. Trip mechanism provided on unloading end of conveyor. Jam protection is provided by load sensing switch at drive platform. These devices interrupt operation of the conveyor motor which stops the conveyor, pumps and final rinse flow. Operation is restarted automatically by removing item which has actuated the trip mechanism, or by operator switch if shutdown resulted from other cause.

STANDARD EQUIPMENT: Automatic initial fill, prewash flushing. Final rinse saver. Sealed dial-type thermometers indicate water temperature in Power Wash, Power Rinse and Final Rinse. Positive low water protection for tank heat. Plastic strip curtains throughout machine. Stainless steel control panel. 115 volt pilot circuit. Inspection door interlocks which prevent pump/conveyor operation when inspection door on prewash, wash or rinse chambers is open. Built-in wireway. Drains are automatically closed when inspection doors are closed. Stainless steel framing members, legs and adjustable feet. Common drain to load end. Common water connection. Common steam connection for tank heat and optional booster on steam heated machine. Common electric connection for motors and controls.

OPTIONAL EQUIPMENT AT EXTRA COST—MECHANICAL: Stainless steel hang-on/drop-in-place front and rear panels. Energy-saving Blower-Dryer: Electric or steam heated. Common drain to unload end. Modified conveyor for insulated trays.

OPTIONAL EQUIPMENT AT EXTRA COST—TANK HEATING: Regulated stainless steel ¾" steam injectors in power wash and power rinse tanks. Stainless steel steam coils. Regulated electric immersion heaters.

OPTIONAL EQUIPMENT AT EXTRA COST—BOOSTERS: Steam heat exchanger with electric thermostatic control, basket type trap, pressure relief valves for both water and steam, pressure reducing valve and pressure gauge for incoming water. Booster amply sized to raise 120°F inlet water to 180°F with minimum of 20 PSI flowing steam pressure (or 140°F inlet water to 180°F with minimum of 10 PSI flowing steam). Maximum steam pressure is 50 PSI.

Electric booster adequately sized to raise 140°F inlet water to 180°F. Pressure/temperature relief valve, pressure reducing valve and pressure gauge for incoming water.

OPTIONAL EQUIPMENT AT EXTRA COST—CHEMICAL SANITIZING: Chemical injection pump for low temperature operation.

OPTIONAL EQUIPMENT AT EXTRA COST—ELECTRICAL: Prewash thermometer.

As continued product improvement is a policy of Hobart, specifications are subject to change without notice.



701 RIDGE AVENUE
TROY, OHIO 45374-0001

LITHO IN U.S.A. (H-01)

