

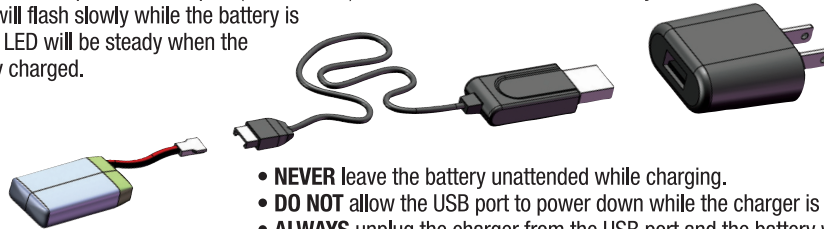
KODO™ Radio Controlled Quadcopter



Before taking first flight, download complete KODO instruction manual from www.dromida.com.

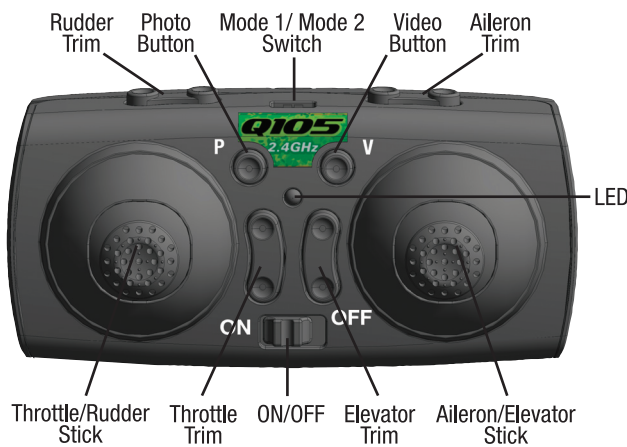
CHARGING

Plug charger into USB port or AC adapter (not included) as shown and connect the battery. The red LED will flash slowly while the battery is charging. The LED will be steady when the battery is fully charged.



- **NEVER** leave the battery unattended while charging.
- **DO NOT** allow the USB port to power down while the charger is connected to the battery.
- **ALWAYS** unplug the charger from the USB port and the battery when charging is complete.

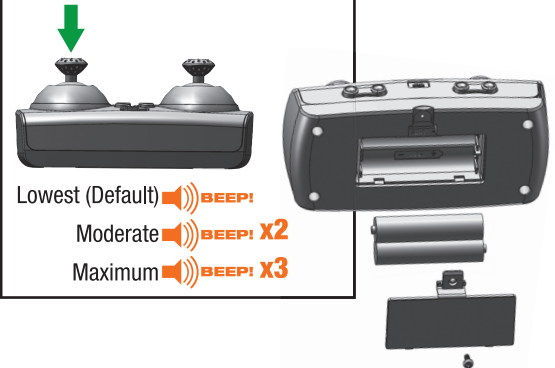
RADIO



NOTE: For Mode 1 configuration, refer to the complete KODO instruction manual at dromida.com

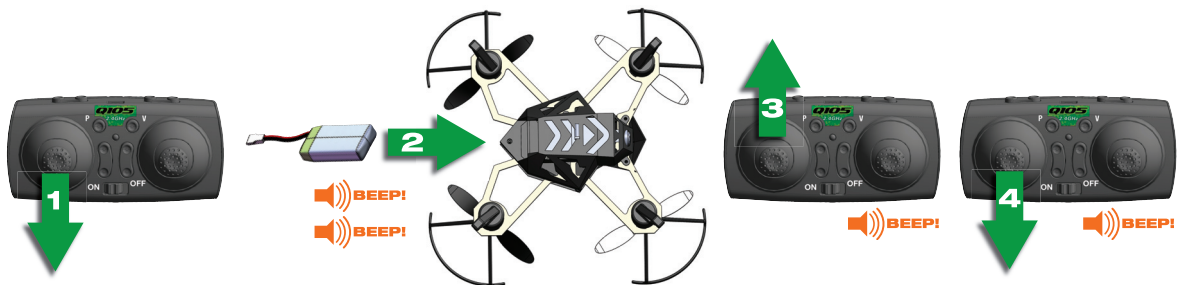
SENSITIVITY ADJUSTMENT

Push down on the left stick to change the sensitivity of the controls.



LINKING

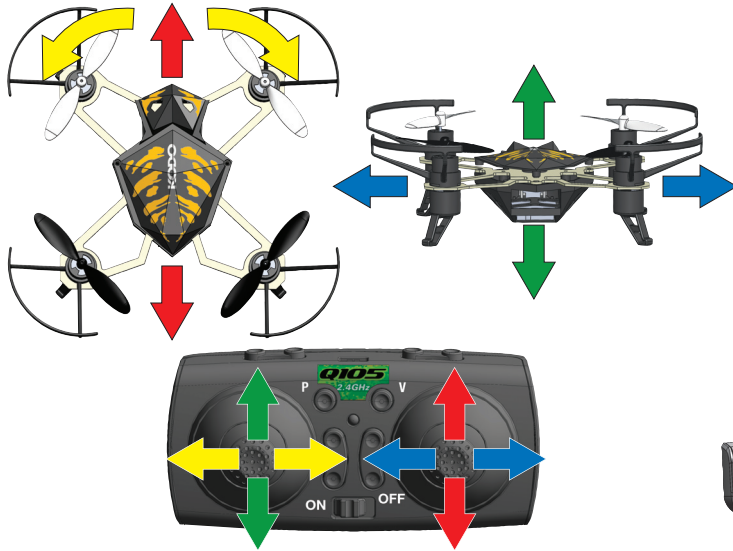
1. Turn on radio with throttle at lowest position.
2. Connect battery to KODO. Listen for two beeps.
3. Move throttle to highest position. Listen for a beep.
4. Move throttle back to lowest position. Listen for a beep.



KODO motors are armed and quad is ready to take off.

HOW TO FLY

BASIC FLIGHT



The LEDs will flash when the battery voltage is low. Land the KODO as soon as possible. Recharge the battery before storing the quadcopter.

FLIPS



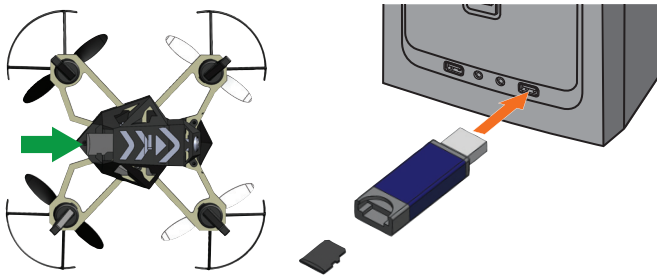
Push down on the right stick and release it to start the flip. Hold the right stick in any direction and release it when the flips are completed. The radio will beep until the right stick released.

CORRECTING DRIFT

It is normal for the KODO to drift slightly. However if it drifts in any direction consistently press the trim button opposite the movement as many times as needed to eliminate the drift.



CAMERA OPERATION



Press the photo button to capture a photo. BEEP!

Press the video button to start a video. BEEEEEP!

The video button must be pressed again to stop and save the video on the card. The photo button will not operate while the camera is recording a video.

TROUBLESHOOTING

PROBLEM: The quadcopter will not respond to the radio.

SOLUTION: (1) Charge or change the battery on the quadcopter (2) Turn off the radio and disconnect the battery for the KODO. Re-link the quadcopter and radio.

PROBLEM: Red radio LED light flashing after linking.

SOLUTION: Replace with new AAA batteries.

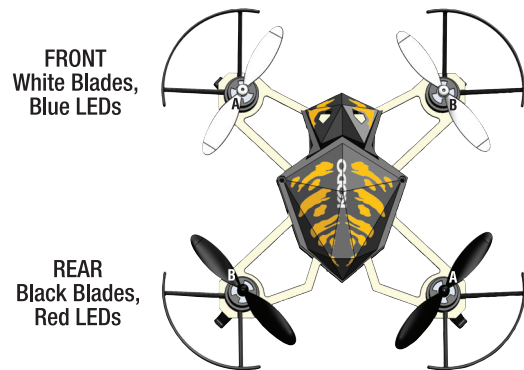
PROBLEM: Unable to flip.

SOLUTION: Battery voltage too low.

dromida.com

BLADE REPLACEMENT

NOTE: Rotor blades *must* be installed as shown.



PROBLEM: Gyro not working properly.

SOLUTION: (1) Battery voltage low. (2) Re-link. (3) Land on to the ground for 3 seconds and take off again.

PROBLEM: Will not take off.

SOLUTION: Rotor blades incorrectly installed. See Rotor Blade Replacement section.

PROBLEM: Quadcopter is shaking.

SOLUTION: Check the canopy, chassis, motors and rotor blades for damage.

DIDE0005 v1.0 © 2014 DROMIDA, A HOBBICO COMPANY **Hobbico**



FCC Statement

Any Changes or modifications not expressly approved by the party responsible for compliance could void the user' s authority to operate the equipment.

This device complies with part 15 of the FCC Rules. Operation is subject to the following two conditions: (1) This device may not cause harmful interference, and (2) this device must accept any interference received, including interference that may cause undesired operation.

Note: This equipment has been tested and found to comply with the limits for a Class B digital device, pursuant to part 15 of the FCC Rules. These limits are designed to provide reasonable protection against harmful interference in a residential installation. This equipment generates uses and can radiate radio frequency energy and, if not installed and used in accordance with the instructions, may cause harmful interference to radio communications. However, there is no guarantee that interference will not occur in a particular installation. If this equipment does cause harmful interference to radio or television reception, which can be determined by turning the equipment off and on, the user is encouraged to try to correct the interference by one or more of the following measures:

- Reorient or relocate the receiving antenna.
- Increase the separation between the equipment and receiver.
- Connect the equipment into an outlet on a circuit different from that to which the receiver is connected.
- Consult the dealer or an experienced radio/TV technician for help.

FCC Radiation Exposure Statement

This equipment complies with FCC radiation exposure limits set forth for an uncontrolled environment.

This transmitter must not be co-located or operating in conjunction with any other antenna or transmitter.



TROUBLESHOOTING

PROBLEM: The quadcopter will not respond to the radio.

SOLUTION: (1) Charge or change the battery on the quadcopter (2) Turn off the radio and disconnect the battery for the KODO. Re-link the quadcopter and radio.

PROBLEM: Red radio LED light flashing after linking.

SOLUTION: Replace with new AAA batteries.

PROBLEM: Unable to flip.

SOLUTION: Battery voltage too low.

dromida.com

PROBLEM: Gyro not working properly.

SOLUTION: (1) Battery voltage low. (2) Re-link. (3) Land on to the ground for 3 seconds and take off again.

PROBLEM: Will not take off.

SOLUTION: Rotor blades incorrectly installed. See Rotor Blade Replacement section.

PROBLEM: Quadcopter is shaking.

SOLUTION: Check the canopy, chassis, motors and rotor blades for damage.

DIDE0005 v1.0 © 2014 DROMIDA, A HOBBICO COMPANY **Hobbico**

