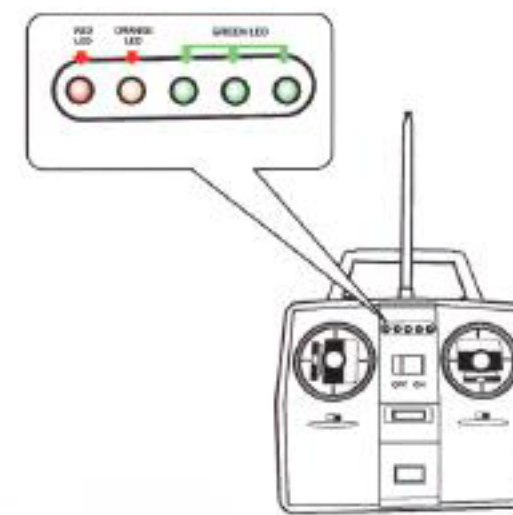


8 x 1.5V / 8 x "AA" / 8 x LR6

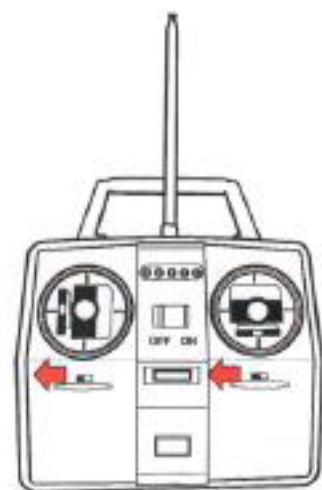
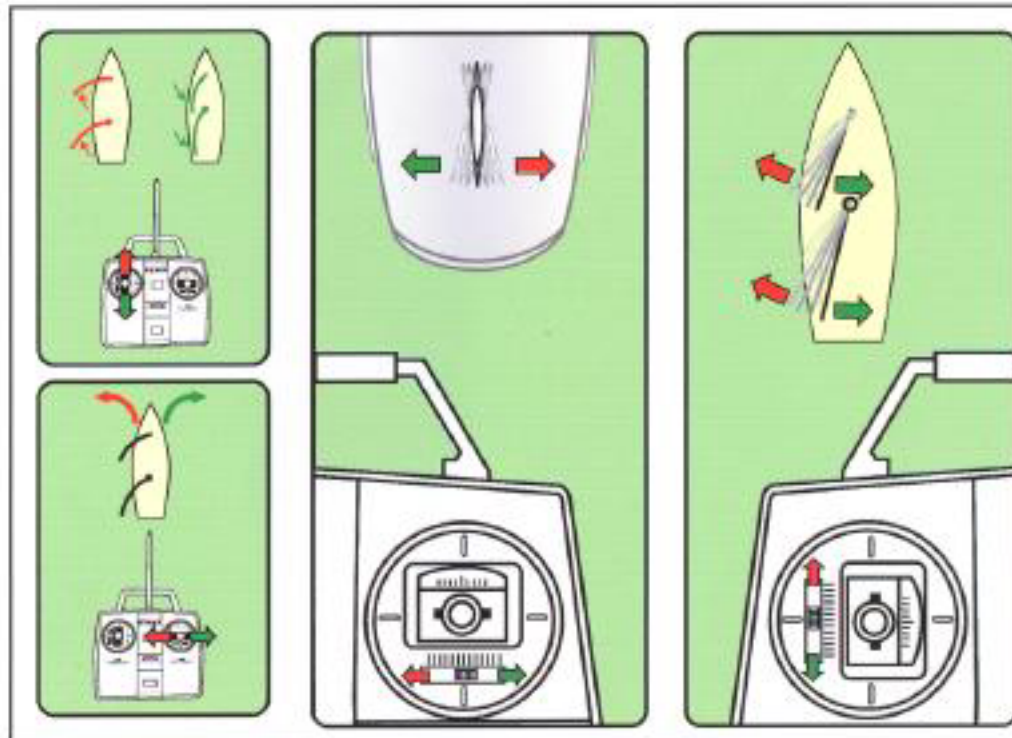
Insert 8 x "AA" battery into the transmitter as the figure 1



The LED will be lighted after switch on the transmitter



After pushing the reverse buttons to the right, the functions of the control sticks will be as the right figures



After pushing the reverse buttons to the left, the functions of the control sticks will be as the right figures

