



# Air Knight

## IMPORTANT NOTES

1. Check the contents list and all parts.
2. Study the instruction manual carefully before assembling.
3. Ensure all required batteries are ready.
4. Follow the instructions printed in manual when using the quick charger
5. This product is intended for 14 years and up. (Adult supervision is required if user is below 14 years old)
6. Do not fly over or near people, power pylon, buildings, highways, train rails, vehicles, trees, lake, and airport.
7. Do not fly if wind speed is over 3 M/S(or over 5 mph)

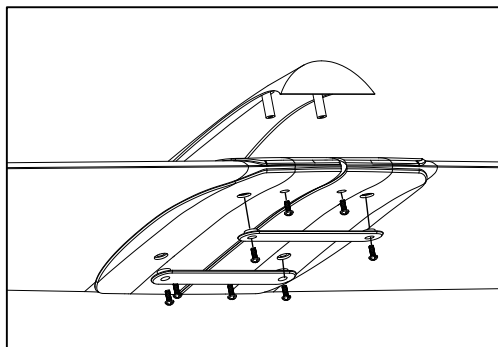
IF YOU FIND ANY FUNCTIONAL PROBLEMS IN OPERATING THIS TOY, PLEASE READ CAREFULLY THE INSTRUCTION SHEETS AND/OR E-MAIL US AT THE FOLLOWING ADDRESS:  
E-mail : info@hobbyengine.com.hk  
Website : www.hobbyengine.com.hk

ITEM NO. 0202

## 2. PLANE ASSEMBLY

### 1) Wing assembly

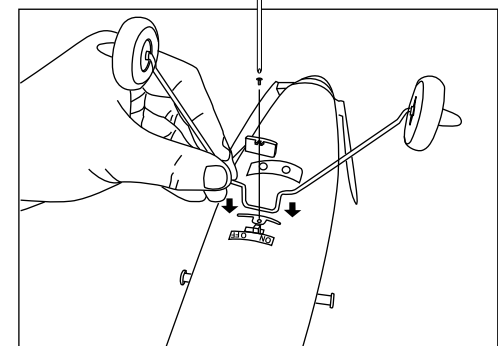
After match leftright wings together, put the wings cover on top of the leftright wings and put 4 pieces of ø2.0-5PWB screws. Installs and put 4 pieces of ø2.0-5PWB screws into the joints.(Diagram 5)



(Diagram 5)

### 2) Landing gear installation

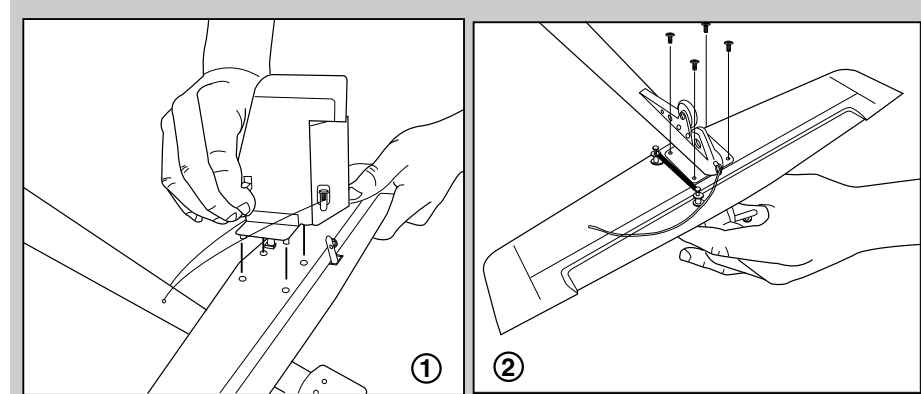
Put the landing gear and plastic sheet together to install into the bottom of the plane. After that, put the ø2.0-5PWB screw to fix it.(Diagram 6)



(Diagram 6)

### 3) Vertical / Horizontal wings installation

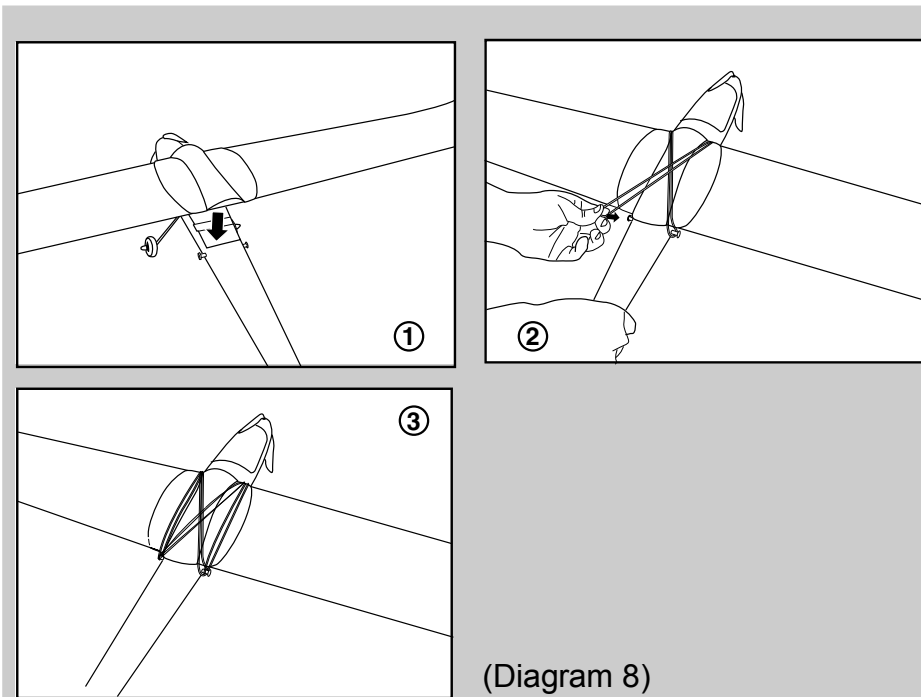
Merge vertical / horizontal wings together, and put it on the tail of the plane, following the position of 4 screw holes. After that, use 4 pieces of ø2.0-5PWB screws to fix it.(Diagram 7)



(Diagram 7)

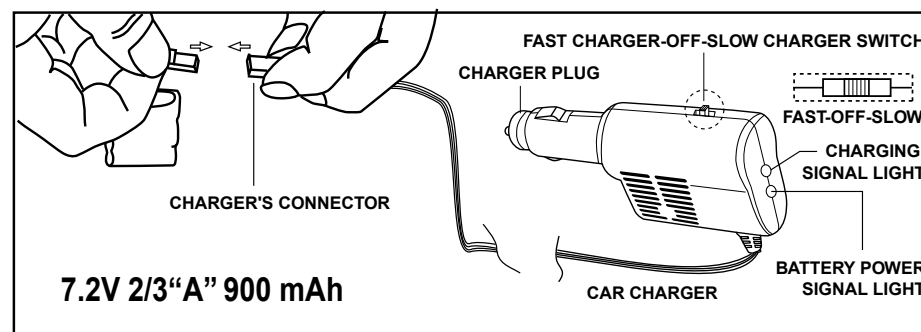
### 4) Wings and body installation

Put wings on top of the plane body and use rubber bands to fix it, following the picture instruction.(Diagram 8)



(Diagram 8)

## 2. THE METHOD OF USING CHARGER AND RECHARGEABLE BATTERY

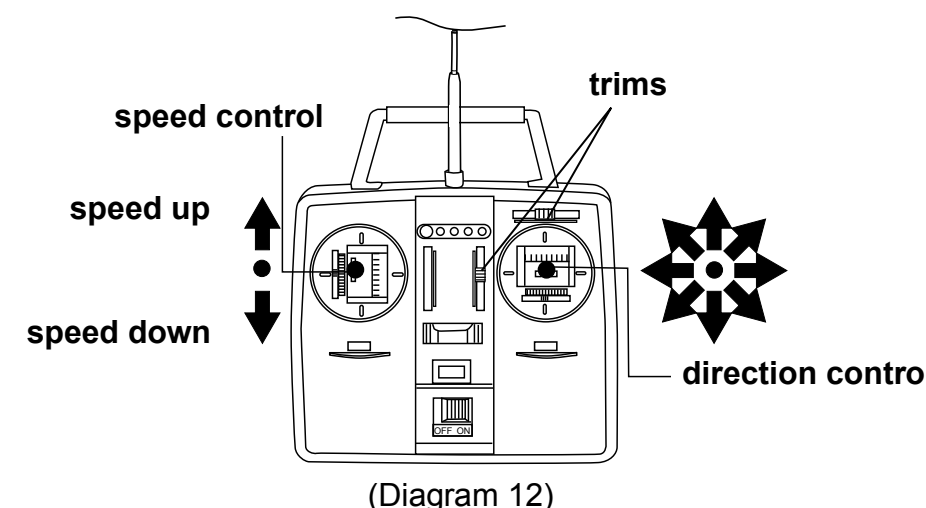


(Diagram 9)

After connecting battery and charger, switch to "FAST" position for fast charging(40 mins) or switch to "SLOW" position for slow charging (80mins). The charger will be automatically cut off power. Charging time is around 40 minutes.

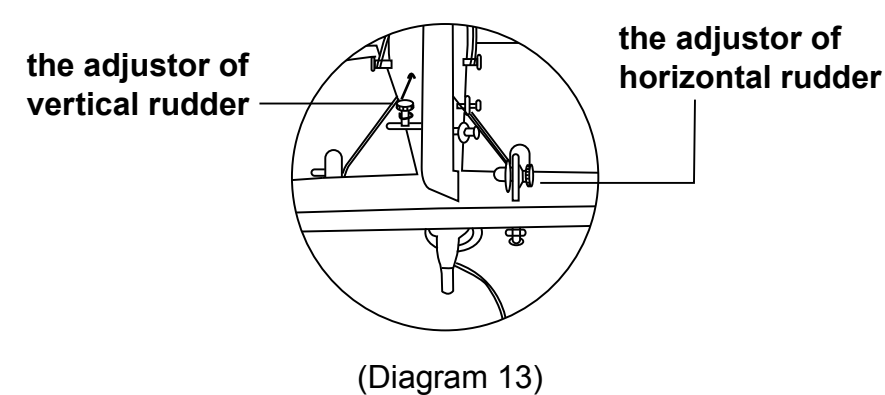
## 5. USE AND CONTROL OF TRANSMITTER

1. First pull out the antenna to full position, and then switch to "ON" position (all light will switch on). Advised to move trims to middle position.
2. Left control stick on the transmitter is for speed control. Turn over the plane body and then switch "ON" the plane power, then the speed control stick is pushed vertical up/down; the engine will start running and the propeller will also start rotating. The amount of speed will change according to the amount of movement apply to control stick. (Diagram 12)



(Diagram 12)

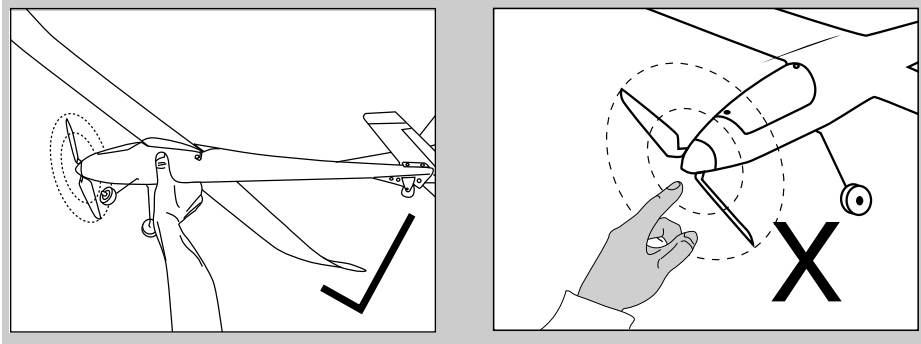
3. Place the plane end facing the used. Advice to adjust both vertical and horizontal rudder to middle position. The trims on the rudder can be use to change the position of rudder. (Diagram 13)



(Diagram 13)

### CAUTIONS!!!

The person who holds the airplane should NOT touch the propeller with any parts of his body to avoid injury.



(Diagram 14)

## LET'S GO FLYING

### 1. Starting

a). Fly by hand.  
Use left hand to hold the transmitter and switch it "ON"; right hand hold the airplane. Left hand push the left stick on the controller to the top and the propellers rotate in high speed, throw out the airplane horizontally and directly head to the wind, watch the airplane flying position and decide whether alignment is required. (Diagram 15)



(Diagram 15)

### b). Take off from the ground.

Place the airplane on the ground and switch "ON" the transmitter. Push the left stick to the top on the transmitter and propeller will rotate in the highest speed. The airplane will move forward in full speed and take off from the ground. (Diagram 16)

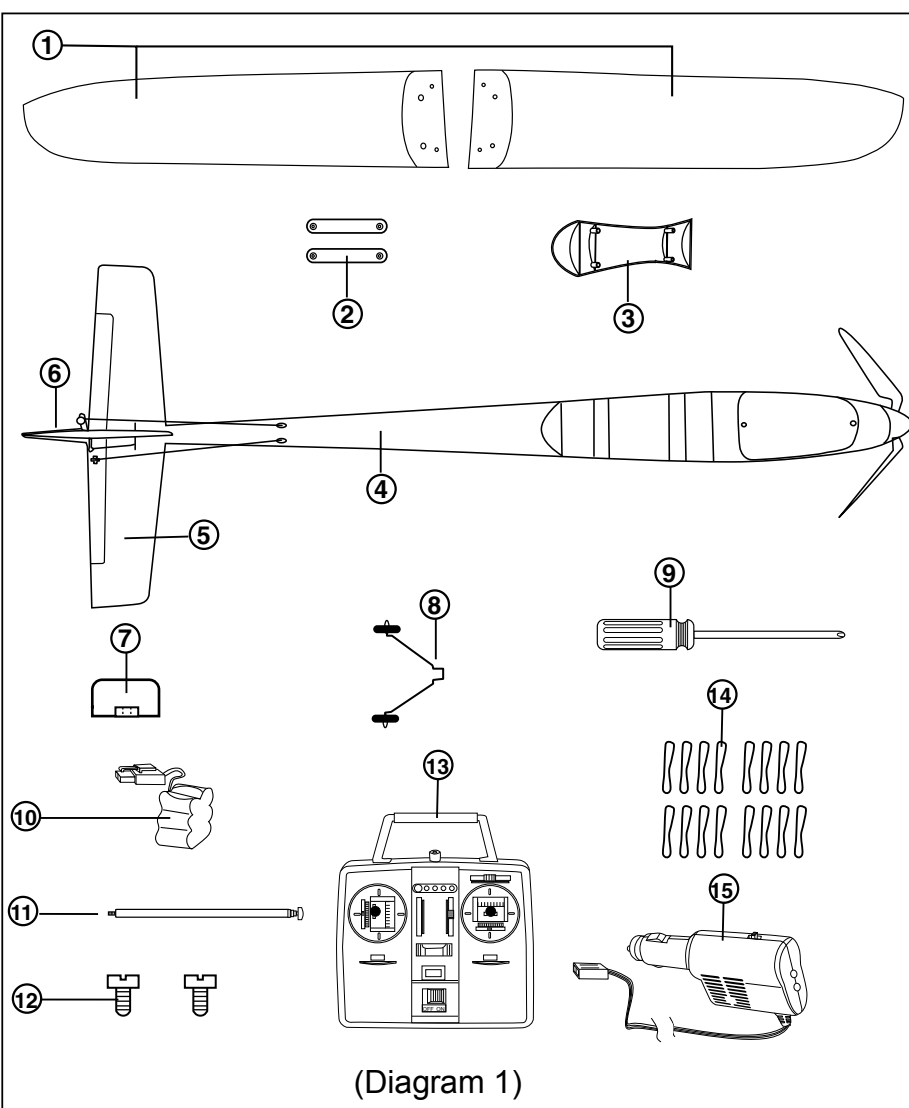


(Diagram 16)

## CONTENTS

(A). Check the contents list and parts (Diagram 1):

- |                     |  |
|---------------------|--|
| ① 2 Main wings      | ⑨ 1 Cross-headed screw driver                      |
| ② 2 Joints          | ⑩ 1 7.2 V 2/3 "A" rechargeable battery pack screws |
| ③ 1 Wing cover      | ⑪ 1 Antenna  |
| ④ 1 Fuselage        | ⑫ 12 Screws  |
| ⑤ 1 Horizontal wing | ⑬ 1 Transmitter                                    |
| ⑥ 1 Vertical wing   | ⑭ 16 Rubber bands                                  |
| ⑦ 1 Plastic sheet   | ⑮ 1 Car charger                                    |
| ⑧ 1 Landing gear    |  |



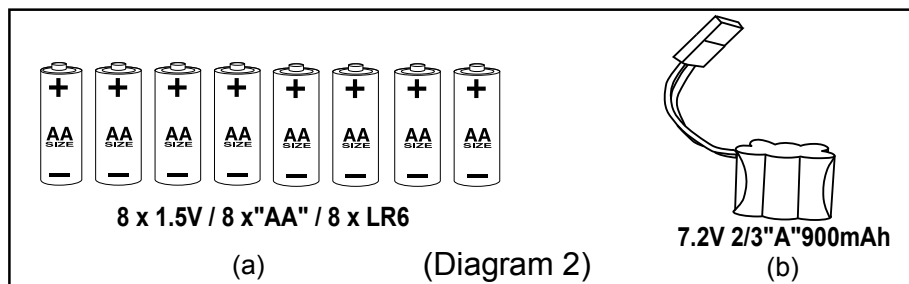
(Diagram 1)

1

## 1. BATTERIES INSTALLATION OF TRANSMITTER

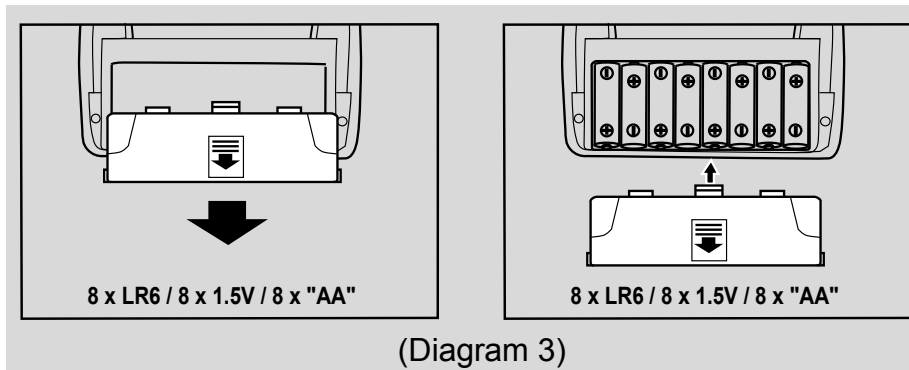
### BATTERIES REQUIREMENT

a. 8 x "AA" alkaline batteries (not included) for transmitter.(Diagram 2a)  
b. 7.2V 2/3 "A" Ni-MH rechargeable battery pack (included).(Diagram 2b)



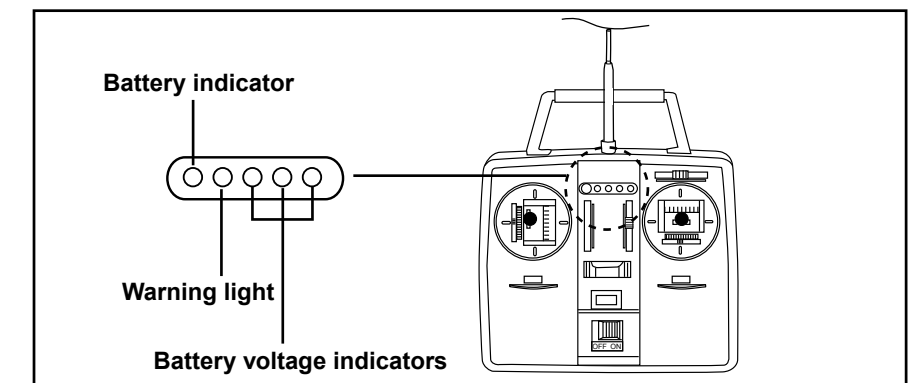
(Diagram 2)

- 1) Horizontally pull down the battery cover, depending on the polarity of batteries installs batteries to the transmitter. (Diagram 3)



(Diagram 3)

- 2) Transmitter battery power indicator has 5 LED light. (Red light is battery power, yellow light is warning, green light are voltage indicators)



(Diagram 4)

2

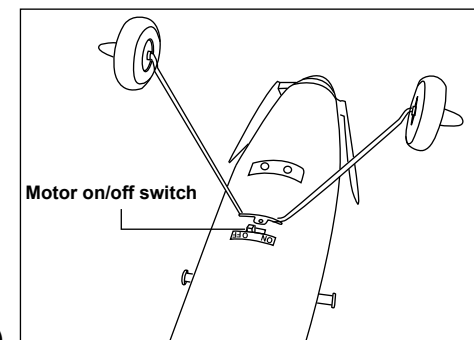
1. Switch to "OFF" position, and plug into the electric power input of car, connecting the rechargeable battery to the charger.
2. Switch to fast charge/slow charge, charging signal light or battery power signal light is "ON" that means started charging.
3. After while/fast charge around 40 mins, slow charge around 80 mins), charging signal light is "OFF" and battery is warm that means fully charged for the rechargeable battery.
4. Switch to "OFF" position, take off the charger.

### Attention:

1. Please do not charge the same rechargeable battery continuous two times.
2. Please do not use over 12V electric power or the other kind of battery connect to the charger.
3. After fully charged battery are left over 24 hours, please charge again when use.
4. The charger has build-in fuse, when the circuit or rechargeable battery set are overheated, the fuse will off the power for protection and safety used.
5. The situation of the liquid coming out from the battery, overheat of the surface of the battery, smoke coming out from the battery are happened, when it is charging. Please take out the battery and the charger immediately.

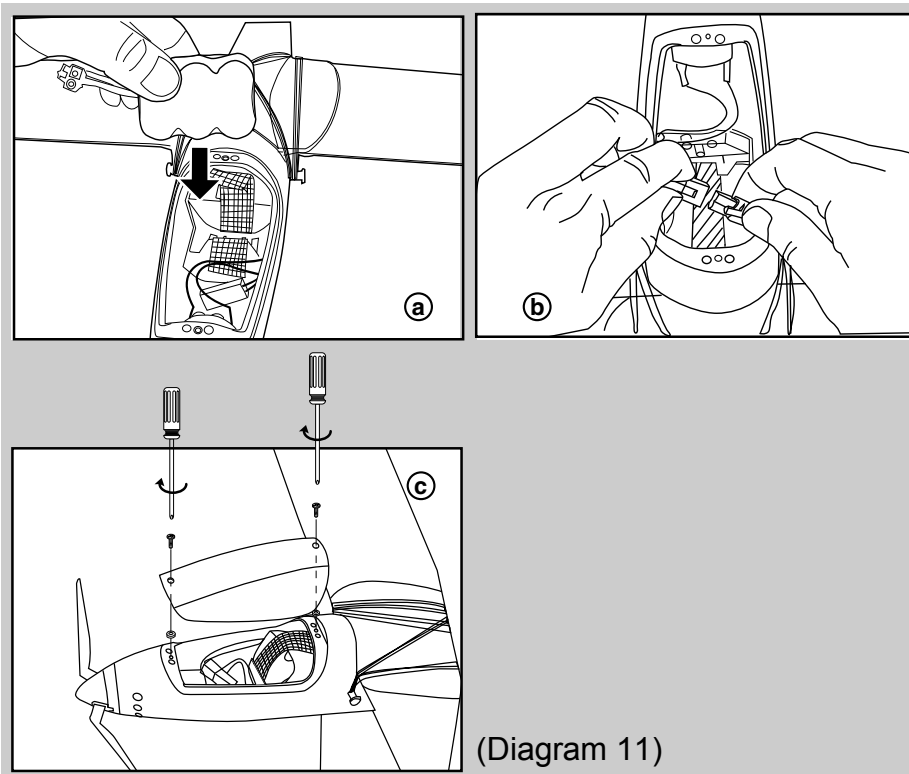
## 4. BATTERY INSTALLATION

Switch to "OFF" position before installing the battery.



(Diagram 10)

1. Insert a fully charged rechargeable battery into the plane body.(Diagram 11a)
2. Follow the direction showed in diagram to tied up the battery inside the plane.(Diagram 11b)
3. Place the cover on top of the body then screw in one screw into both end of the cover holes.(Diagram 11c)

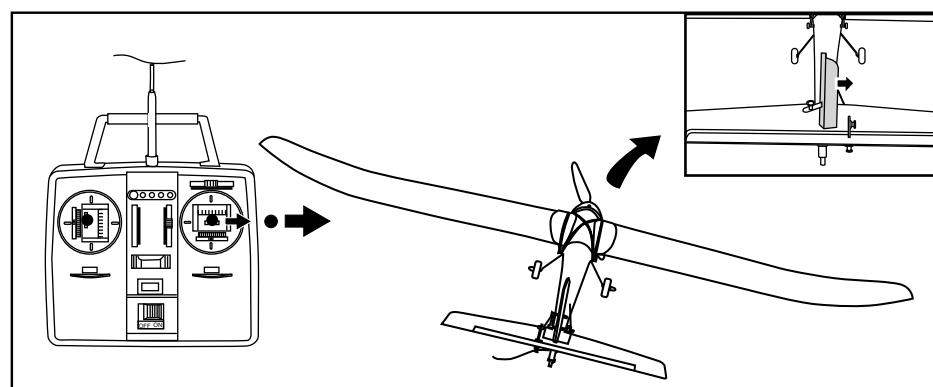


(Diagram 11)

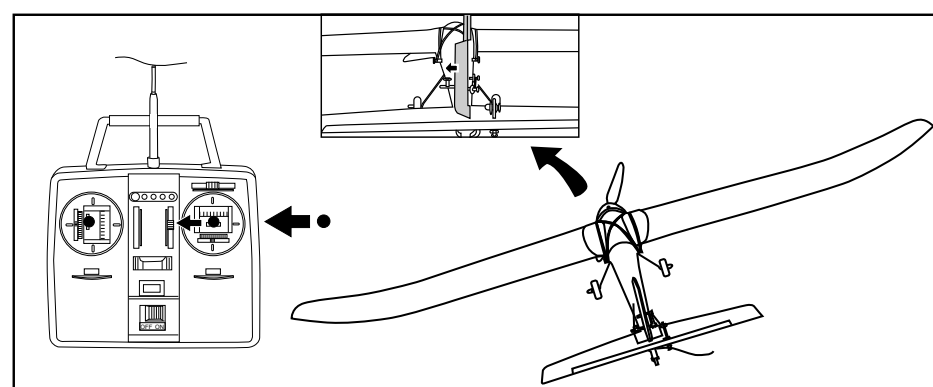
6

## 6. USE OF CONTROL STICK

1. Push the controller stick to right/left, the vertical rudder will respond and move the same direction as the stick, the plane will turn direction during fly according movement of the rudder.

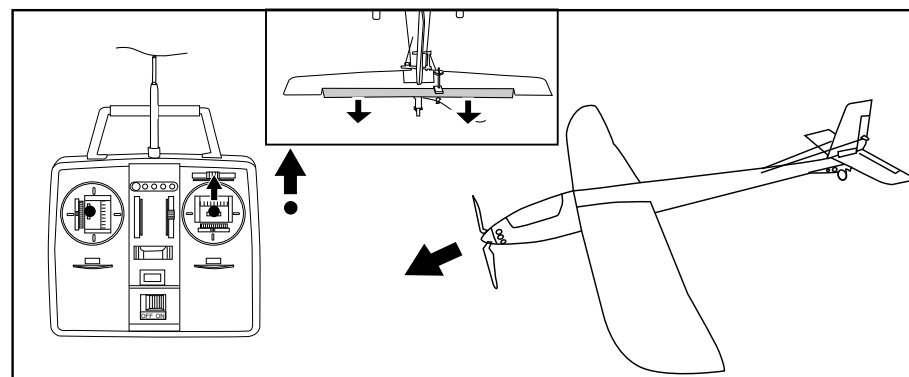


(Diagram 17)

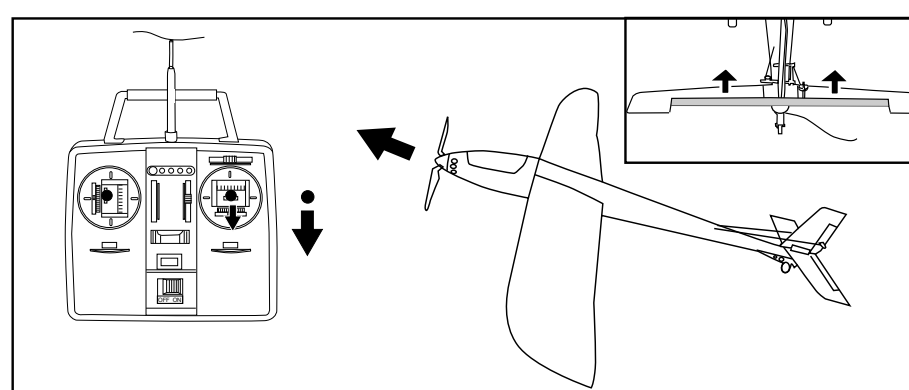


(Diagram 18)

2. Push the controller stick to up/down, the horizontal rudder will respond in moving opposite direction. When the stick is pushed up, the rudder will flip down, in result of that the plane will fly lower. otherwise pushing the stick down will result in the plane fly higher.



(Diagram 19)



(Diagram 20)

**Note:**  
When all three battery voltage indicators (green lights) are switched off, that indicates the "AA" battery of the transmitter need renewing.

10

FCC NOTE:

THE ANTENNA PROVIDED IS A UNIQUE ANTENNA. BY INSTALLATION OF UNAUTHORIZED ANTENNA TO THIS EQUIPMENT. SUCH UNAUTHORIZED INSTALLATION COULD VOID THE USER'S AUTHORITY TO OPERATE THE EQUIPMENT.

THE MANUFACTURER IS NOT RESPONSIBLE FOR ANY RADIO OR T V INTERFERENCE CAUSED BY UNAUTHORIZED MODIFICATIONS TO THIS EQUIPMENT. SUCH MODIFICATIONS COULD VOID THE USER'S AUTHORITY TO OPERATE THE EQUIPMENT.