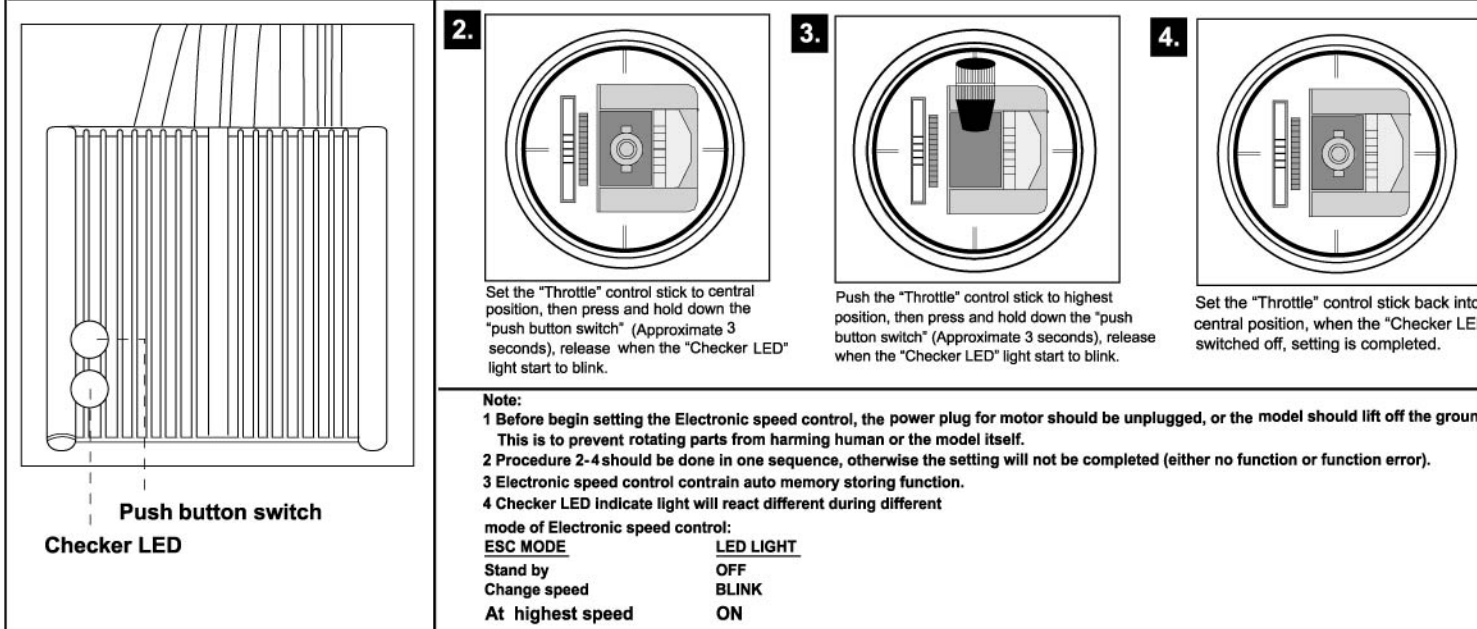


# MAD DOG (SPEED BOAT) INSTRUCTION MANUAL

## Electronic speed control setting instruction

1. First switch on the transmitter power switch, then turn on power for transmitter. Set the "Throttle Trim" button to central position.



NOTE: The manufacturer is not responsible for any radio or TV interference caused by unauthorized modifications to this equipment. Such modifications could void the user's authority to operate the equipment.

This device complies with Part 15 of the FCC Rules. Operation is subject to the following two conditions:  
(1) this device may not cause harmful interference, and  
(2) this device must accept any interference received, including interference that may cause undesired operation.

NOTE: This equipment has been tested and found to comply with the limits for a Class B digital device, pursuant to Part 15 of the FCC Rules. These limits are designed to provide reasonable protection against harmful interference in a residential installation. This equipment generates, uses and can radiate radio frequency energy and, if not installed and used in accordance with the instructions, may cause harmful interference to radio communications. However, there is no guarantee that interference will not occur in a particular installation. If this equipment does cause harmful interference to radio or television reception, which can be determined by turning the equipment off and on, the user is encouraged to try to correct the interference by one or more of the following measures:  
- Reorient or relocate the receiving antenna.  
- Increase the separation between the equipment and receiver.  
- Connect the equipment into an outlet on a circuit different from that to which the receiver is connected.  
- Consult the dealer or an experienced radio/TV technician for help.



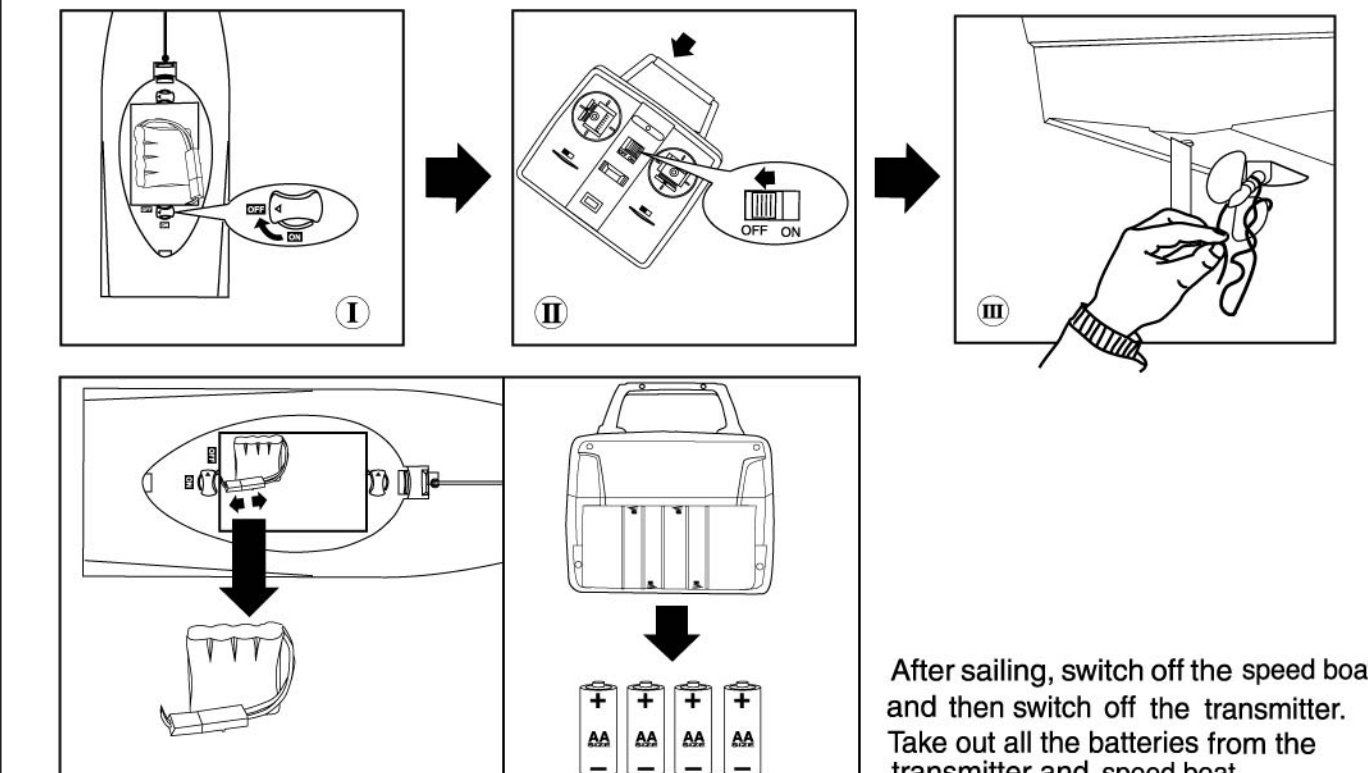
E-mail : info@hobbyengine.com.hk  
Website : www.hobbyengine.com.hk



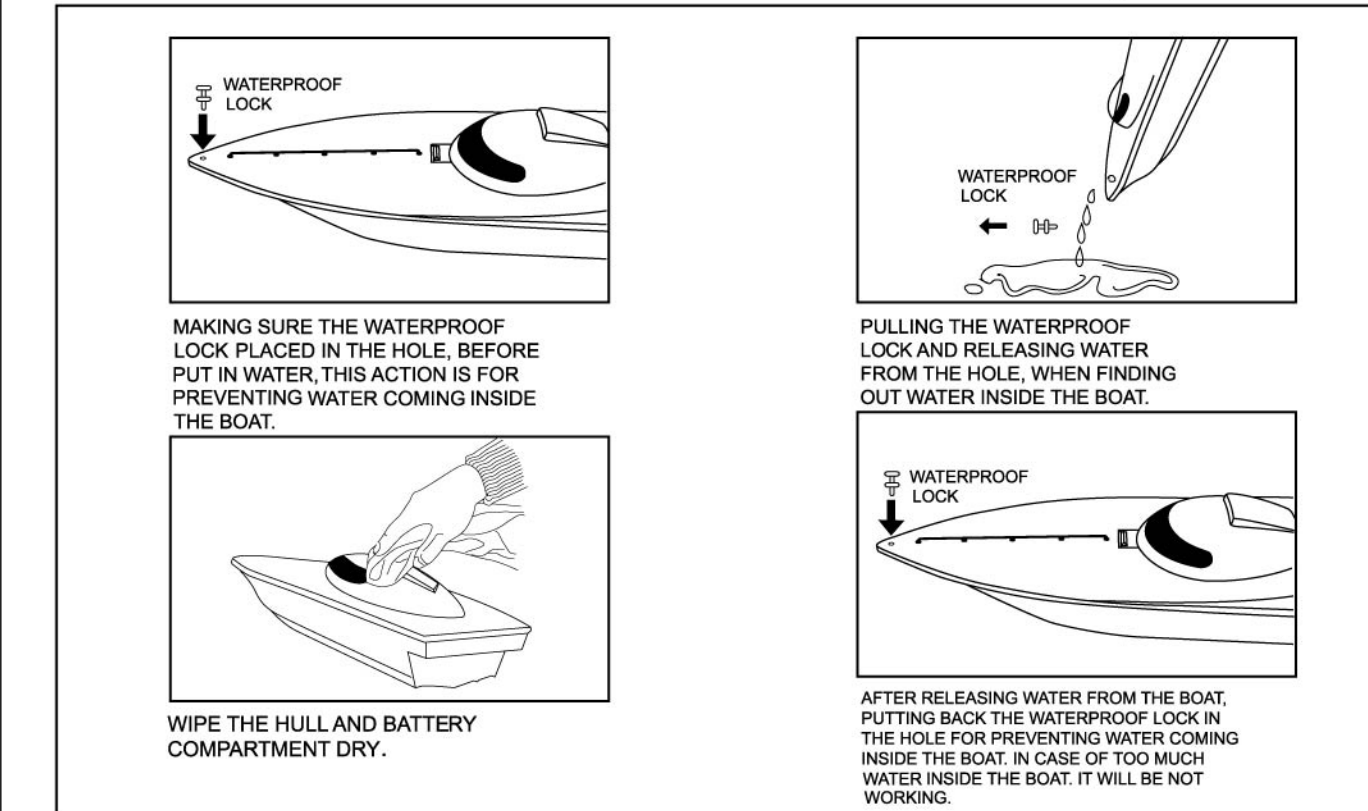
# MAD DOG

## IMPORTANT NOTES:

Turn off the switch of the boat before trying to clean things attached to the propeller.



After sailing, switch off the speed boat and then switch off the transmitter. Take out all the batteries from the transmitter and speed boat.



FCC Note:  
THE ANTENNA PROVIDED IS A UNIQUE ANTENNA. BY INSTALLATION OF UNAUTHORIZED ANTENNA TO THIS EQUIPMENT, SUCH UNAUTHORIZED INSTALLATION COULD VOID THE USER'S AUTHORITY TO OPERATE THE EQUIPMENT. THE MANUFACTURER IS NOT RESPONSIBLE FOR ANY RADIO OR TV INTERFERENCE CAUSED BY UNAUTHORIZED MODIFICATIONS TO THIS EQUIPMENT. SUCH MODIFICATIONS COULD VOID THE USER'S AUTHORITY TO OPERATE THE EQUIPMENT.  
IF YOU FIND ANY FUNCTIONAL PROBLEMS IN OPERATING THIS TOY, PLEASE READ CAREFULLY THE INSTRUCTION SHEETS AND/OR E-MAIL US AT THE FOLLOWING ADDRESS: E-mail : info@hobbyengine.com.hk Website : www.hobbyengine.com.hk

# MAD DOG (SPEED BOAT) INSTRUCTION MANUAL

## ITEM NO.0304

In order to get the best performance of your speed boat, please read carefully this instruction before use.

## WARNING

Not suitable for children under 3 years old, small parts can be swallowed. All materials for fastening or packing purposes are not part of the toy and should be discarded for children's safety. The model is to be operated in water only when fully assembled in accordance with the instruction.

## PREPARATION BEFORE USE:

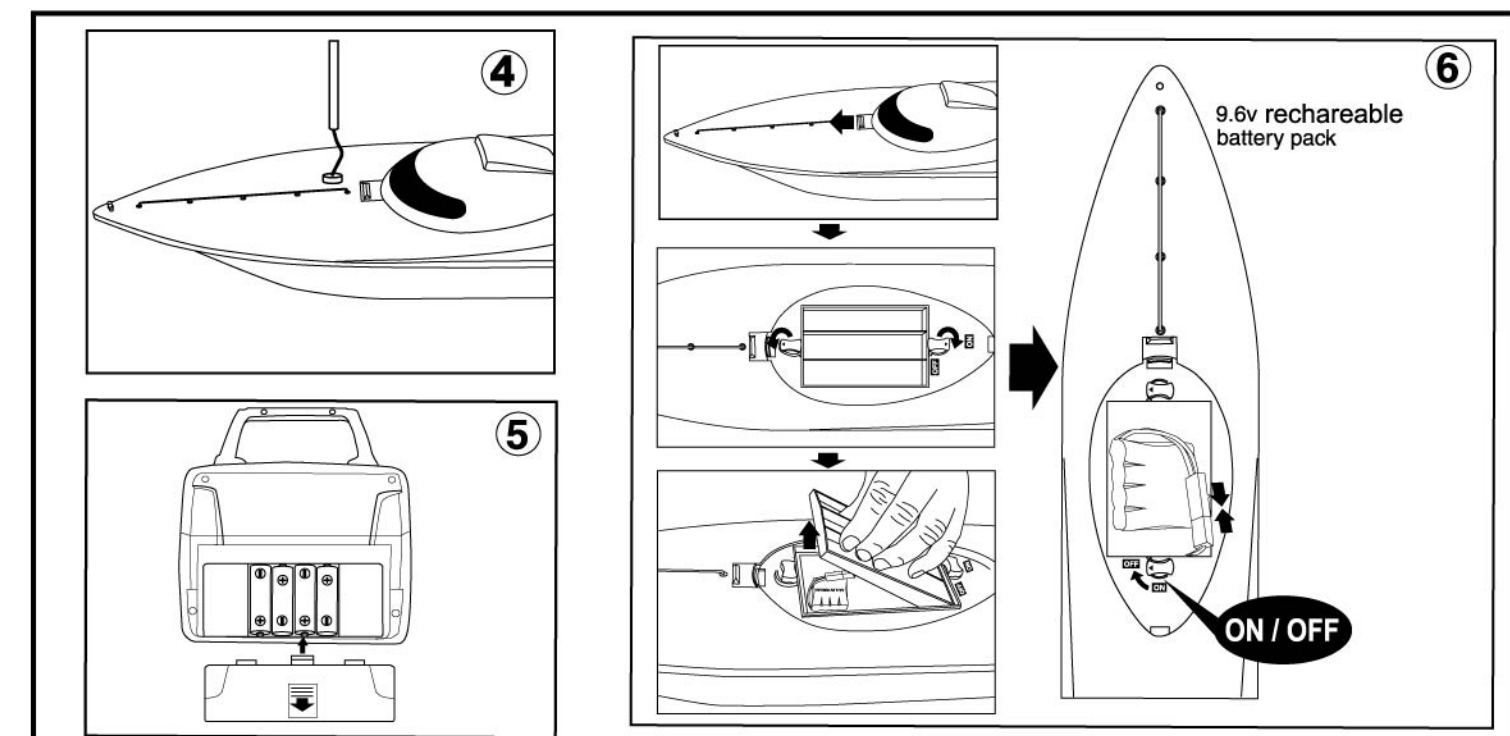
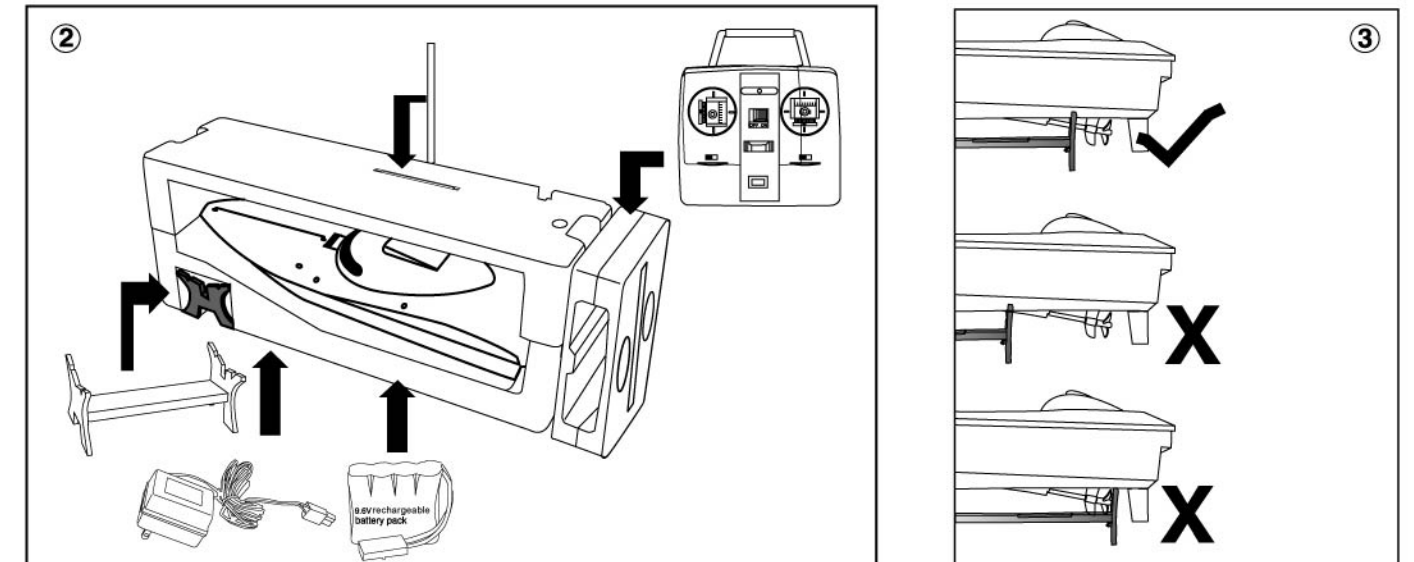
- Make sure you have the following necessities (Fig.1):  
1) 4x"AA" size Alkaline Batteries for transmitter.  
2) 9.6V rechargeable battery pack for speed boat.



- About rechargeable battery: (1) changing time: 5 hours  
(2) Endurance: 6 minutes (approx)
- Follow step by step from figure 2 to figure 8.

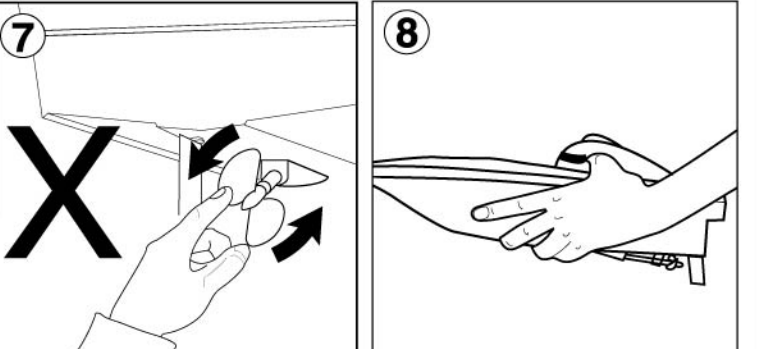
## IMPORTANT NOTE:

Non-rechargeable batteries are not to be recharged. Rechargeable batteries are to be removed from the toy before being charged. Rechargeable batteries are only to be charged under adult supervision. Different types or new and used batteries are not mixed. Only batteries of the same or equivalent type as recommended are used. Batteries are inserted with correct polarity. Exhausted batteries are to be removed from the boat. The supply terminals are not to be short-circuited. Regular check on cord, plug, enclosure and other parts, in case of damage, toys must not be used with transformer or battery charger until damage has been repaired.



## CAUTIONS FOR SAFETY

Never use your finger to touch the propeller to avoid hurting your fingers (fig 7) correct way to hold the boat (fig 8)



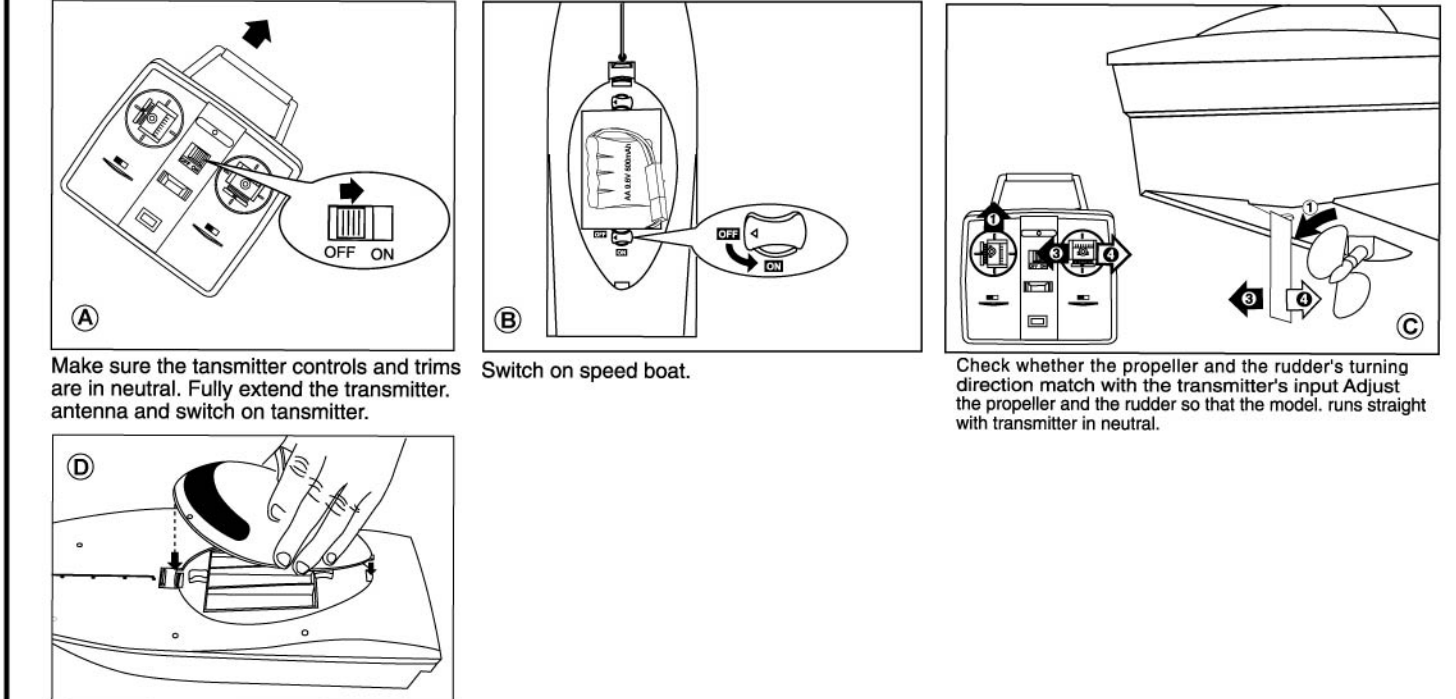
## CAUTIONS FOR SAFETY

Do not sail the boat beyond 300 feet/100 meters from yourself. Do not operate this boat in sea water for best performance.



## BE READY FOR SAILING

In order to avoid radio interferences to your product, before sailing, ask your neighbour to see if they are running the same frequency as yours.



## CONTROL INSTRUCTION FOR A VOYAGE

