

CAUTION
PLEASE READ WITH GUARDIANSE

Incorrect use of rechargeable batteries will lead to leakage, fire, overheating, etc. Please be aware of the following:

- Please follow the charger instruction when charging.
- Please do not short circuit. It is very dangerous for the large current flow.
- Please do not put into fire, decompose, remodel the battery.

Incorrect use of batteries will lead to leakage, fire, overheating, etc. Please be aware of the following:

- Please do not mix with old batteries and new batteries.
- Please correctly place the polarity (+) and (-)
- Please make sure the power is switched off and batteries are taken out from the tank and transmitter after play.
- Please do not short circuit, put into fire, heat and decompose the batteries.
- If leakage gets into the eye(s), please rinse the impacted eye(s) with plenty of water immediately and consult with physician. If leakage adheres to skin and/or clothing, please rinse the impacted area with water immediately.

Please pay attention to the following with playing. Lack of caution may cause accident and injury.

- When playing outdoor, please make sure the area is safe from traffic and pedestrians.
- Please stop playing when it is thundering and/or lightning outside. It may cause lightning strike.
- Please keep the product away from children under age.
- This product contains small parts. Please keep away from children under age to avoid choking.
- Please keep the car body and transmitter away from impact. I.e swings, forces, etc.
- When playing indoor, please make sure that the area is safe from damageable furniture and/or glasses.
- Please do not put fingers, hair, and other loose items like clothing into the caterpillar when playing.
- Do not use other remote control other than the one comes in the package.

OTHER NOTES

- It is a precision instrument.
- Please do not disassemble or modify.
- Please keep the product away from fire, heat, and humid environment.
- Please do not place the product on top of valuable items.
- Interference or control by other people by mistake may cause unexpected accidents, the end user will be responsible for any damages caused.

RADIO FREQUENCY

- Interference may happen when more than one radio control products are operated at the same time in the nearby area.
- If interference occurs to malfunction the tank, please change the location.

ABOUT THE BATTERY

- Please always turn off the power switches on the car body and transmitter after playing. Forgetting to turn off the power will cause current flow and use up of the batteries.
- Please replace all batteries at the same time. Mixture of old and new batteries may cause leakage.
- If there is a time delay on the control, please replace the batteries with new ones.

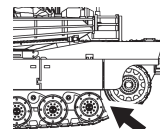
Trouble - Shooting		
Symptoms	Possible causes	Solution
Tank does not move	Main power is switched OFF	Switch the power to ON
	Battery orientation - the polarities may not be aligned properly	Align the polarities of batteries properly
	Out of battery	Replace with new batteries
	Contact failure of battery after a strong impact	Take out and insert the batteries again
Malfunction of control	Interference of frequency	Change location
	Damaged frequency	Change location
	Out of battery	Replace with new batteries

Note for repair

- Repair fee is applicable for damages caused by usage.
- Customer bears the cost of delivery for repairing.
- Repair is only applicable on generic products. It is not acceptable and repairable for any amended and/or modified products.
- Repairing time is variable depending on the situation.
- Please read carefully the instruction manual before use. Any damages caused by misconducting the products will not be repaired.

Caution:

Please do not put finger in between wheels and caterpillar to avoid injury.



Warning:

Changes or modifications to this unit not expressly approved by the party responsible for compliance could void the user's authority to operate the equipment.

NOTE:

This equipment has been tested and found to comply with the limits for a Class B digital device, pursuant to Part 15 of the FCC Rules. These limits are designed to provide reasonable protection against harmful interference in a residential installation. This equipment generates, uses and can radiate radio frequency energy and, if not installed and used in accordance with the instructions, may cause harmful interference to radio communications.

However, there is no guarantee that interference will not occur in a particular installation. If this equipment does cause harmful interference to radio or television reception, which can be determined by turning the equipment off and on, the user is encouraged to try to correct the interference by one or more of the following measures:

- Reorient or relocate the receiving antenna.
- Increase the separation between the equipment and receiver.
- Connect the equipment into an outlet on a circuit different from that to which the receiver is connected.
- Consult the dealer or an experienced radio/TV technician for help.

This device complies with Part 15 of the FCC Rules. Operation is subject to the following two conditions:

- (1) this device may not cause harmful interference, and
- (2) this device must accept any interference received, including interference that may cause undesired operation.

This device complies with Industry Canada licence-exempt RSS standard(s). Operation is subject to the following two conditions:

- (1) this device may not cause interference, and
 - (2) this device must accept any interference, including interference that may cause undesired operation of the device.
- Le présent appareil est conforme aux CNR d'Industrie Canada applicables aux appareils radio exempts. L'exploitation est autorisée aux deux conditions suivantes:
- (1) l'appareil ne doit pas produire de brouillage, et
 - (2) l'utilisateur de l'appareil doit accepter tout brouillage radioélectrique subi, même si le brouillage est susceptible d'en compromettre le fonctionnement.

Product Specification

Age Grade: 8+

Frequency: 2.4GHz

Working distance: 15meters (outdoor)

Dustproof, splash-proof (Tank body only)

Function: Action: Forward/Backward, Left/Right Turns, Stop, Spinning, Headlight (Turning on automatically when the tank is on), Tail-light (on when going backward), Turret Turns, Recoil action (when "shoot"), Cannon moves (manually)

Sound: Idling sound, Turret turning sound, Shooting sound, Machine gun sound. Sound can be turned off on transmitter.

TANK -

Battery: AA Alkaline Battery x 6 pcs (excluded)
Running time: About 45 minutes (Using Alkaline batteries)

TRANSMITTER -

Battery: 9V battery x 1pc (excluded)
Running time: About 4 hours (Using Alkaline batteries)

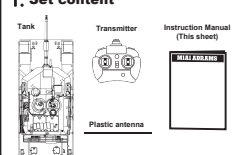
Use of alkaline batteries is recommended. Rechargeable AA batteries can also be used. Performance of the tank may vary due to rechargeable batteries. Some brands may not be recommended. Please check before use. Operation and running times are approximate. Performance of the tank may vary upon: battery used, road conditions, way of operations, etc.

M1A1 ABRAMS

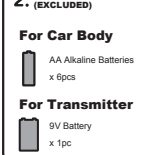
INSTRUCTION MANUAL

Target Age: 8 year old +
Please read this instruction manual before handling.
Please perform accordingly to play safely.
Please keep this instruction manual in a safe place.

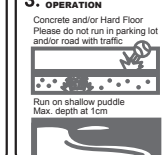
1. Set content



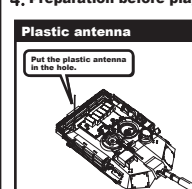
2. BATTERY REQUIREMENT (EXCLUDED)



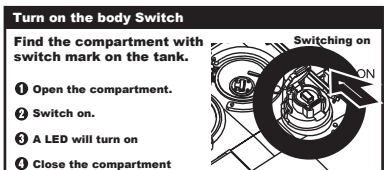
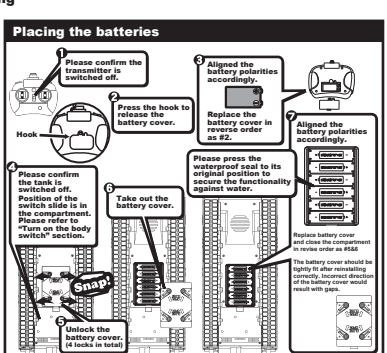
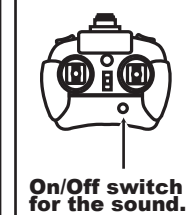
3. SUITABLE PLACES FOR OPERATION



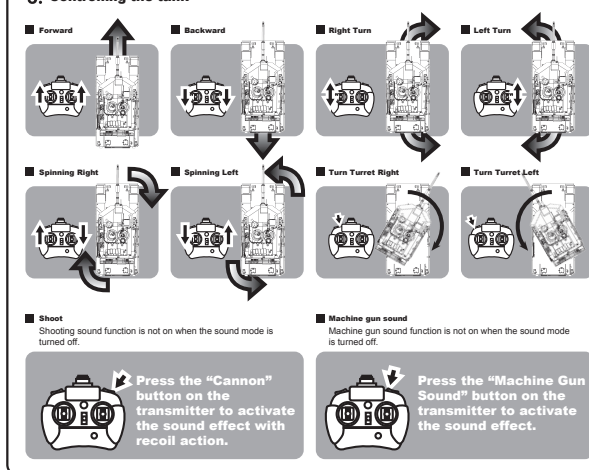
4. Preparation before playing



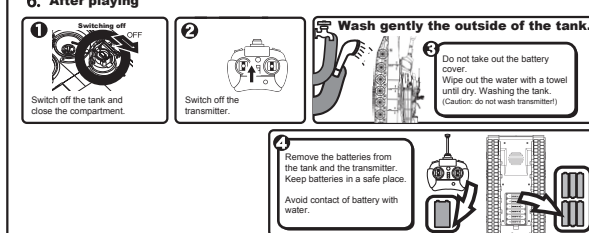
Sound On/Off
Press the On/Off switch for the sound on transmitter to turn off the function. Press again to turn on.



5. Controlling the tank



6. After playing



Notes to the washing process:

1. The tank is not 100% waterproof. Please rinse the tank with slow running water. Rinsing with excess water may flood the inside of the tank and cause damage.
2. The inside and battery compartment of the tank may be hot after running the motor. Please let the tank sit and cool down for a while before rinsing to avoid water vapor getting into the internal part of the tank.