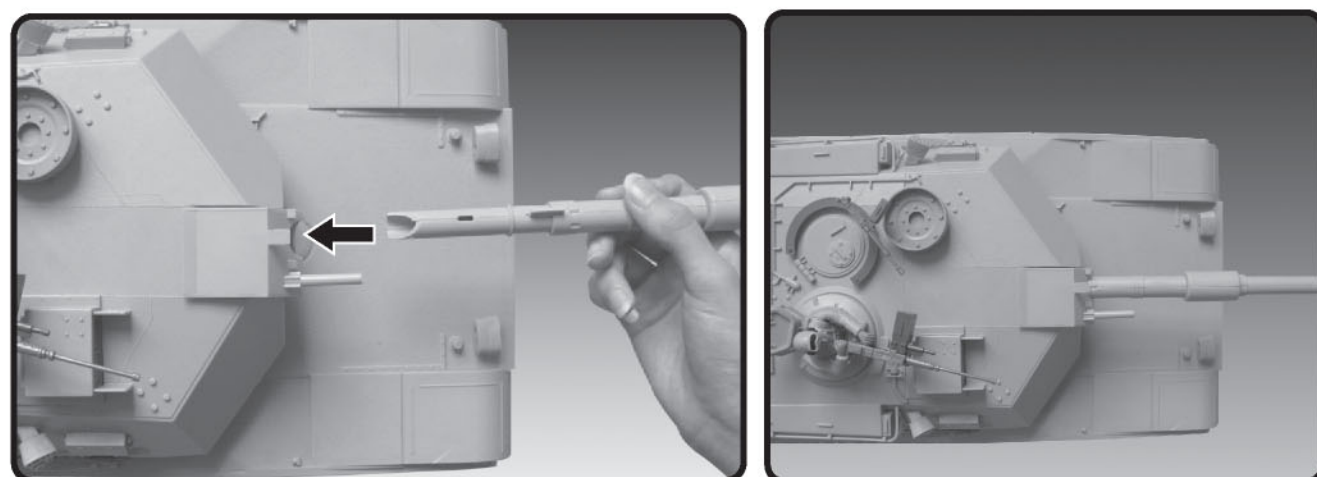
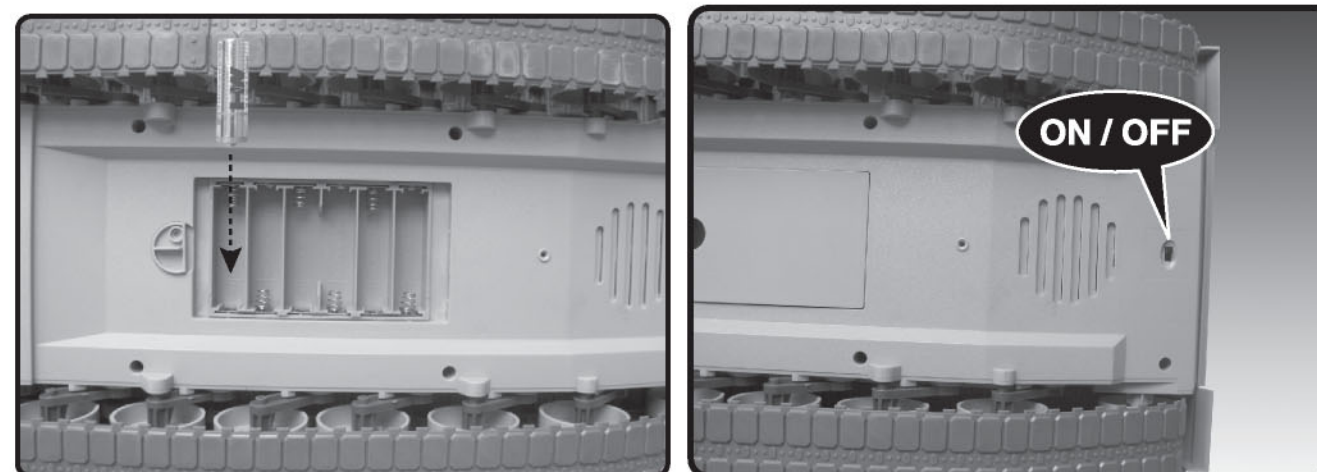
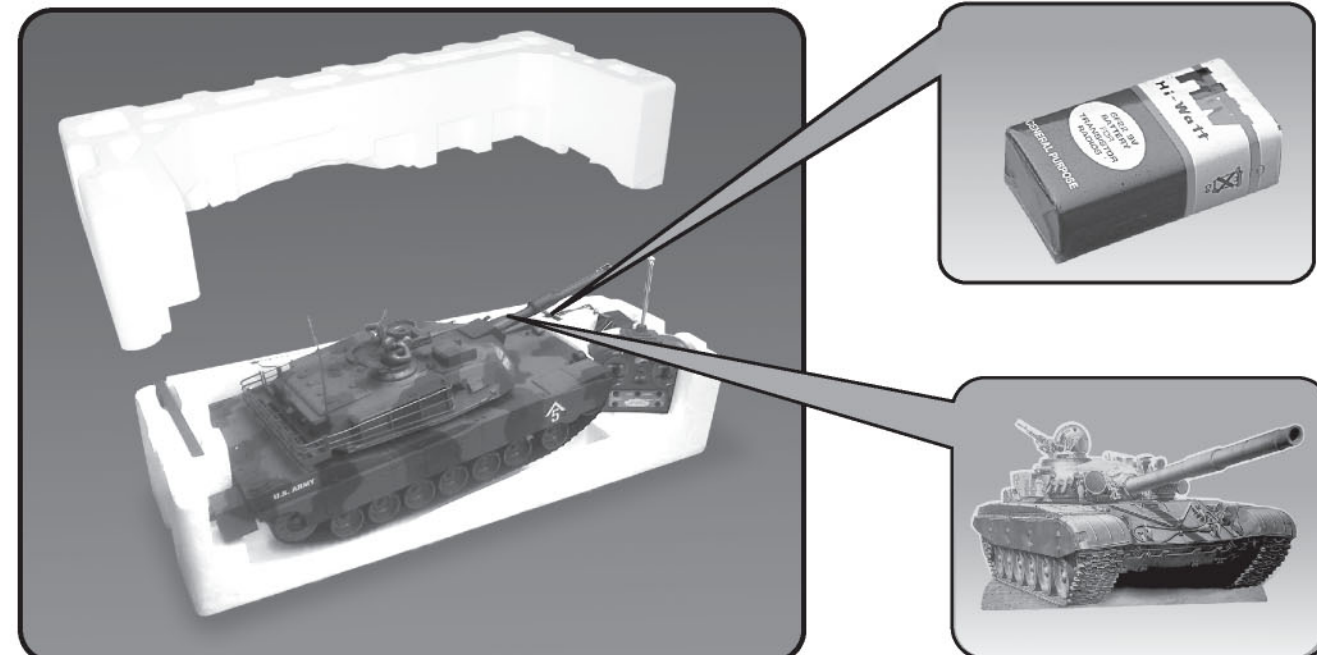
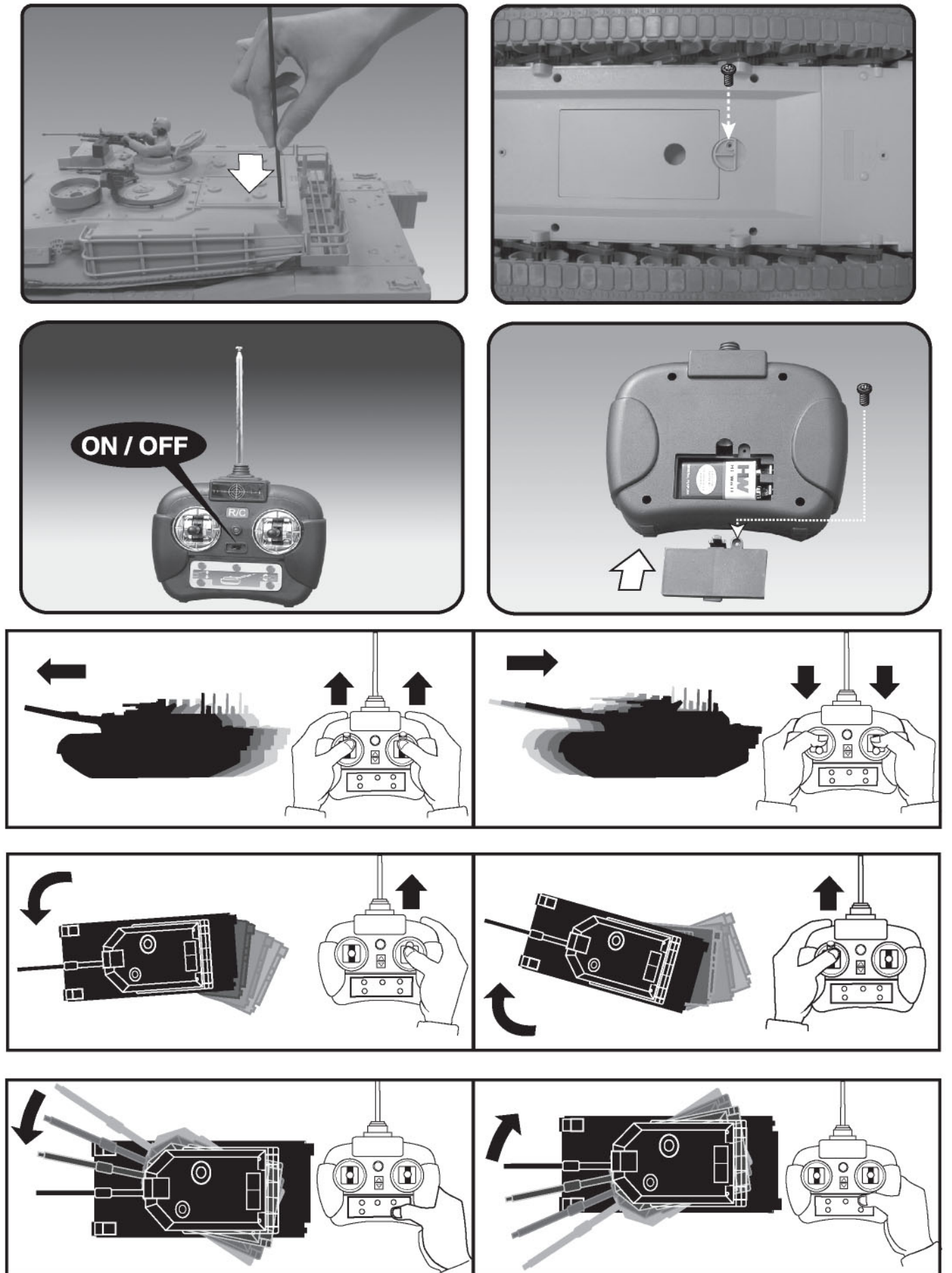


INSTRUCTIONS

ITEM NO.0811



IF YOU FIND ANY FUNCTIONAL PROBLEMS IN OPERATING THIS TOY, PLEASE READ CAREFULLY THE INSTRUCTION SHEETS AND/OR E-MAIL US AT THE FOLLOWING ADDRESS: info@hobbyengine.com.hk



- * THIS TANK SHOOTS 3 CM LONG BOMB-SHAPED PLASTIC BULLET FROM THE FIRING SYSTEM.
- * THIS TANK CAN HIT A TARGET UP TO 3 METER WITH GOOD ACCURACY.
- * THIS TANK CAN FIRE WHILE ON THE MOVE OR STATIONARY.
- * USER HAS TO RELOAD BULLET FOR EACH FIRING.
- * 4 PIECES OF BOMB-SHAPED PLASTIC BULLET AND 1 CARD BOARD TARGET ARE ALSO INCLUDED.

"NOTE: THE MANUFACTURER IS NOT RESPONSIBLE FOR ANY RADIO OR TV INTERFERENCE CAUSED BY UNAUTHORIZED MODIFICATIONS TO THIS EQUIPMENT. SUCH MODIFICATIONS COULD VOID THE USER'S AUTHORITY TO OPERATE THE EQUIPMENT."