

1.CAUTION - ELECTRIC TOY -

- Not recommended for children under 14 years of age. As with all electrical products, precautions should be observed during handling and use to reduce the risk of electric shock.
- Adult supervision is required if user is below 14 years old.
- Make sure that no interference from other instruments in your vicinity with the same frequency.
- Never drive your 1:10 sports car in the car park, on the road among people to avoid any accident.
- Never drive your 1:10 sports car on a wet surface. Always drive on a dry, clean and flat open area.
- Your control range to this car is around 120 m / 400 feet.

- Plug the charger into a standard household electrical outlet as shown. (Fig.1)
- Connect the 9.6V battery pack to the small connecting plug the charger as shown.
- Charge for a minimum of 12 hours on the initial charge. Subsequent charges require only 5 hours.
- Remove charger from electrical outlet when not in use.
- Attention to adult:
The charger and battery pack need to be periodically examined for potential hazards. any potentially hazardous parts need to be repaired or replaced.

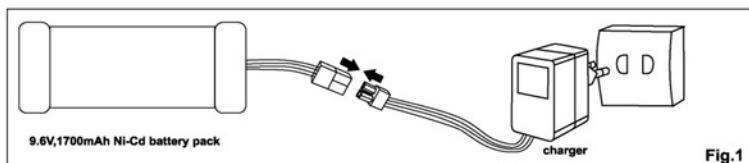


Fig.1

IMPORTANT NOTE:

Non-rechargeable batteries are not to be recharged.
Rechargeable batteries are to be removed from the toy before being charged.
Rechargeable batteries are only to be charged under adult supervision.
Different types of new and used batteries are not to be mixed.
Only batteries of the same or equivalent type as recommended are used.
Batteries are inserted with correct polarity.
Exhausted batteries are to be removed from the toy.
The supply terminals are not to be short-circuited.
Regular check on cord, plug, enclosure and other parts. In case of damage, toys must not be used with transformer or battery charger until damage has been repaired.

TROUBLE SHOOTING AND SUPPORT

- Possible phenomenon: vehicle does not move or moves slowly.
- Make sure that you have installed a new alkaline 9V battery in the correct polarity of the transmitter.
- Make sure that you have installed a fully charged 9.6V battery pack in the correct position of the vehicle.
- Possible phenomenon: vehicle moves sporadically or exhibits erratic behavior.
- Make sure that there is no outside radio interference in your area.
- Make sure that the transmitter antenna is securely attached to the transmitter.
- Possible phenomenon: running time of vehicle is shortened.
- Follow strictly the charging instruction of the battery pack.
- Possible phenomenon: vehicle exhibits low range from transmitter.
- Make sure that the transmitter antenna has been fully extended and securely mounted to the transmitter.

MAINTENANCE

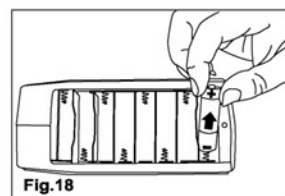


Fig.18

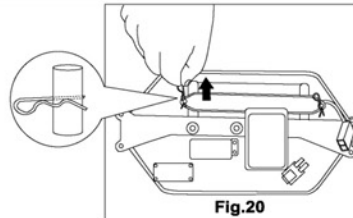


Fig.20

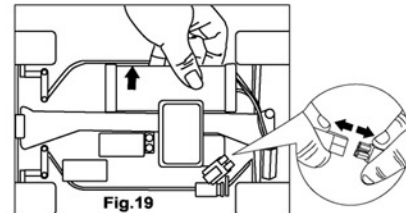


Fig.19

- Take out all batteries when not in use.(Fig.18 and Fig.19)

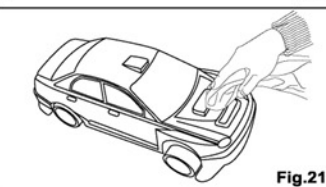


Fig.21

- Use a clean wet cloth to wipe the car body and wheel after each drive (as shown in Fig.21). Keep your car in a dry and clean place when not in use.

FCC NOTE:

THE MANUFACTURER IS NOT RESPONSIBLE FOR ANY RADIO OR TV INTERFERENCE CAUSED BY UNAUTHORIZED MODIFICATIONS TO THIS EQUIPMENT. SUCH MODIFICATIONS COULD VOID THE USER'S AUTHORITY TO OPERATE THE EQUIPMENT.

FORWARD TURNING

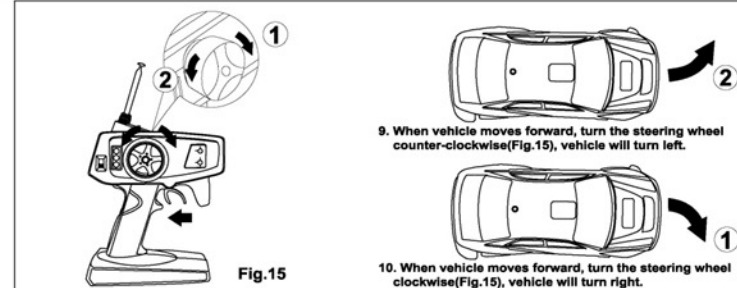


Fig.15

- When vehicle moves forward, turn the steering wheel counter-clockwise(Fig.15), vehicle will turn left.

Fig.16

- When vehicle moves forward, turn the steering wheel clockwise(Fig.15), vehicle will turn right.

BACKWARD TURNING

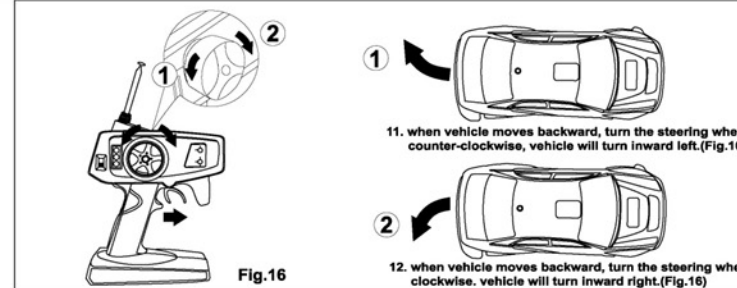


Fig.16

- When vehicle moves backward, turn the steering wheel counter-clockwise, vehicle will turn inward left.(Fig.16)

Fig.17

- When vehicle moves backward, turn the steering wheel clockwise, vehicle will turn inward right.(Fig.16)

PROPER USE AND PRECAUTIONS



Fig.17

COMPONENT CHECK LIST

PLEASE SEARCH THE TRAY AND REMOVE ALL OF THE COMPONENTS LISTED BELOW.(Fig.2)

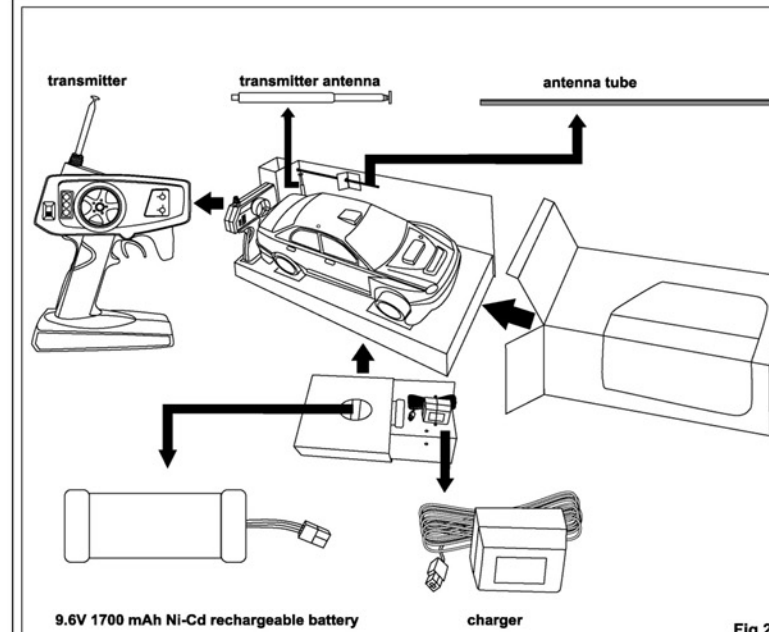


Fig.2

BATTERY PACK INSTALLATION IN VEHICLE AND TRANSMITTER

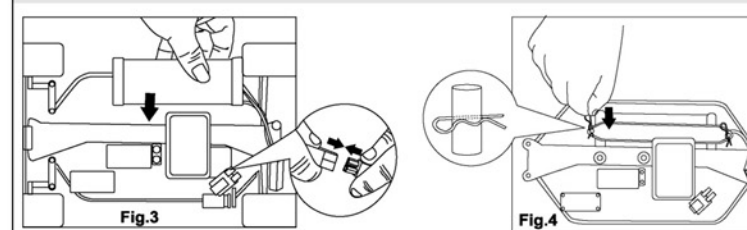


Fig.3

Fig.4

- Install the fully charged 9.6V battery pack into the battery compartment of the chassis as shown in (Fig.3)

- Close and lock the battery compartment cover as shown in (Fig.4)

1/10 SCALE FULL FUNCTION RADIO CONTROL SPORTS CAR

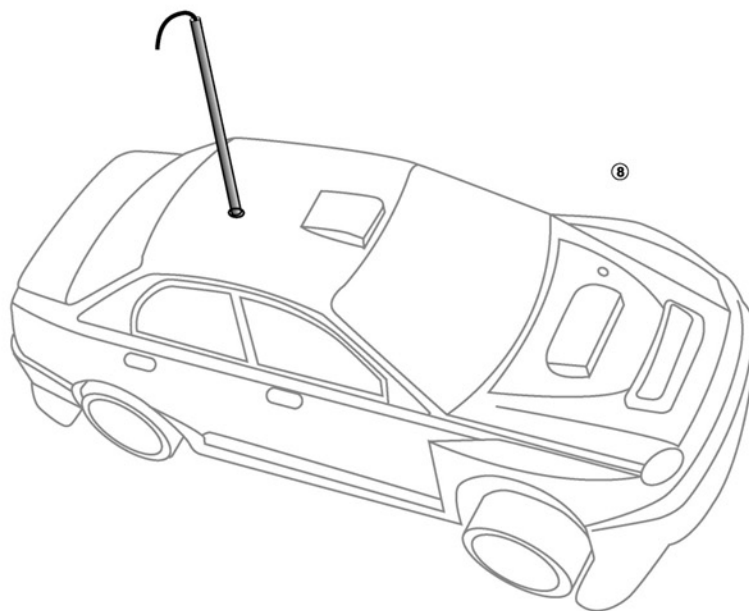


Fig.5

Tech.art

FCC NOTE:
THE ANTENNA PROVIDED IS A UNIQUE ANTENNA. BY INSTALLATION OF UNAUTHORIZED ANTENNA TO THIS EQUIPMENT, SUCH UNAUTHORIZED INSTALLATION COULD VOID THE USER'S AUTHORITY TO OPERATE THE EQUIPMENT.

THE MANUFACTURER IS NOT RESPONSIBLE FOR ANY RADIO OR TV INTERFERENCE CAUSED BY UNAUTHORIZED MODIFICATIONS TO THIS EQUIPMENT. SUCH MODIFICATIONS COULD VOID THE USER'S AUTHORITY TO OPERATE THE EQUIPMENT.

IF YOU FIND ANY FUNCTIONAL PROBLEMS IN OPERATING THIS TOY, PLEASE READ CAREFULLY THE INSTRUCTION SHEETS AND/OR E-MAIL US AT THE FOLLOWING ADDRESS:

info@hobbyengine.com.hk

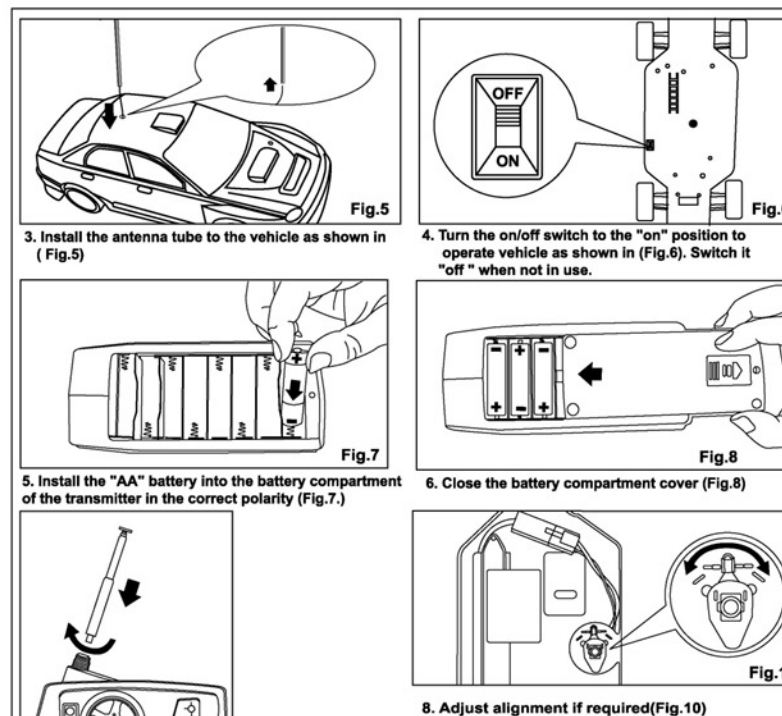


Fig.5

Fig.6

Fig.7

Fig.8

Fig.9

Fig.10

FEATURES AND FUNCTIONS

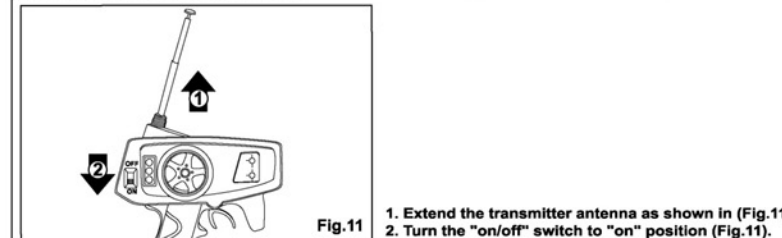


Fig.11

- Extend the transmitter antenna as shown in (Fig.11).
- Turn the "on/off" switch to "on" position (Fig.11).

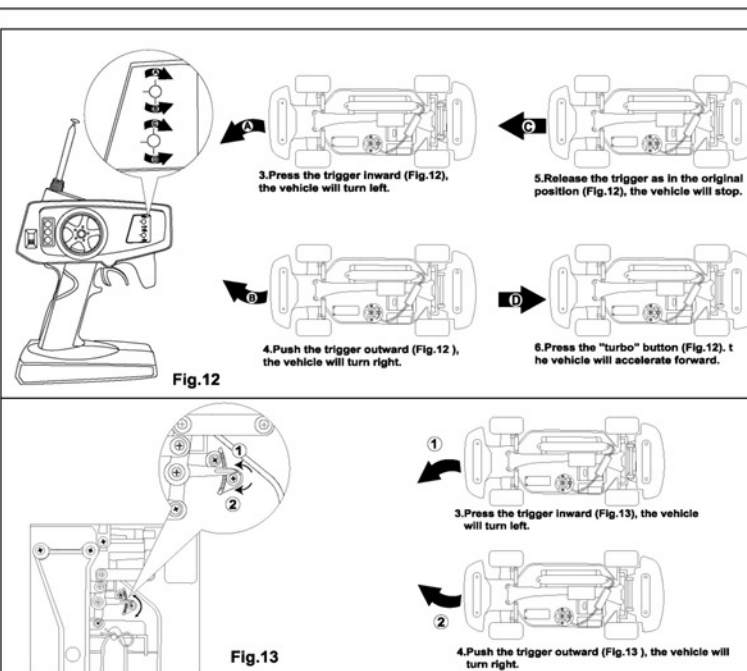


Fig.12

Fig.13

Fig.14

FORWARD BACKWARD ACTION.

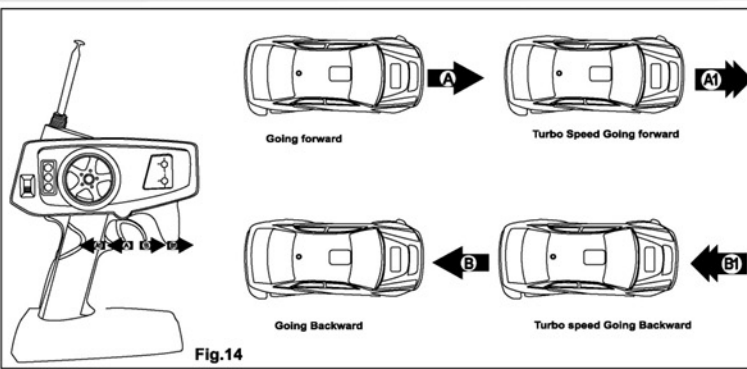


Fig.14