

## Immobilizer System

---

The immobilizer system protects your vehicle from theft. If an improperly-coded key (or other device) is used, the engine's fuel system is disabled.

When you turn the ignition switch to the ON (II) position, the immobilizer system indicator should come on briefly, then go off. If the indicator starts to blink, it means the system does not recognize the coding of the key. Turn the ignition switch to the LOCK (0) position, remove the key, reinsert it, and turn the ignition switch to the ON (II) position again.

The system may not recognize your key's coding if another immobilizer key or other metal object (i.e. key fob) is near the ignition switch when you insert the key.

If the system repeatedly does not recognize the coding of your key, contact your dealer.

Do not attempt to alter this system or add other devices to it. Electrical problems could result that may make your vehicle undriveable.

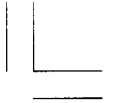
If you have lost your key and cannot start your engine, contact your dealer.

*As required by the FCC:*

*This device complies with Part 15 of the FCC rules. Operation is subject to the following two conditions: (1) This device may not cause harmful interference, and (2) this device must accept any interference received, including interference that may cause undesired operation.*

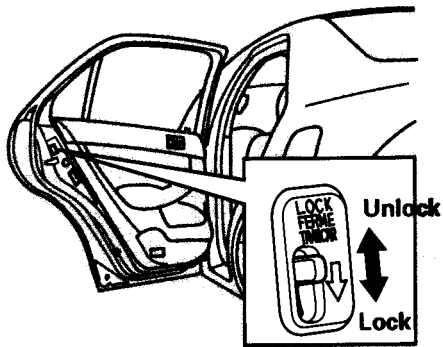
*Changes or modifications not expressly approved by the party responsible for compliance could void the user's authority to operate the equipment.*

*This device complies with Industry Canada Standard RSS-210. Operation is subject to the following two conditions: (1) this device may not cause interference, and (2) this device must accept any interference that may cause undesired operation of the device.*



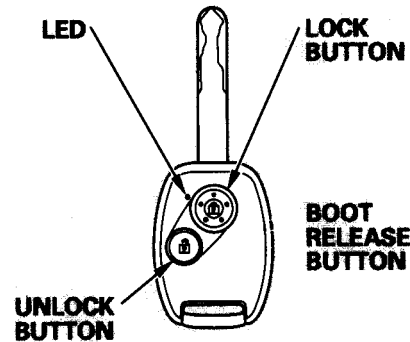
## Door Locks, Remote Transmitter

### Childproof Door Locks



The childproof door locks are designed to prevent children seated in the rear from accidentally opening the rear doors. Each rear door has a lock lever near the edge. With the lever in the LOCK position, the door cannot be opened from inside regardless of the position of the lock tab. To open the door, pull the lock tab up, and use the outside door handle.

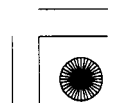
### Remote Transmitter



**LOCK** – Press this button to lock all doors. When you push the LOCK button, all outside turn signals and both indicators in the instrumental panel flash three times to verify the doors and the boot are locked and the security system has set. You cannot lock the doors if any door is not fully closed or the key is in the ignition switch.

**UNLOCK** – Press this button once to unlock the driver's door. Push it twice to unlock the other doors. When you push the UNLOCK button, all outside turn signals, and both indicators in the instrumental panel flash once.

The front ceiling light (if the light switch is in the Door position) and rear ceiling light (if the light switch is in the centre position) will come on when you press the UNLOCK button. If you do not open any door within 30 seconds, the lights fade out. If you relock the doors with the remote transmitter before 30 seconds have elapsed, the lights will go off immediately.





## Remote Transmitter

4. Remove the old battery from the back of the inner cover, and insert a new battery into the back of the cover with the + side facing down.
5. Install the parts in reverse order.

### NOTICE

An improperly disposed battery can hurt the environment. Always confirm local regulations for battery disposal.

### *Chinese Regulations for Controlling Short Range Radio Equipment*

*Keyless Entry Function*

*Modulation Mode: FSK*

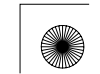
*Frequency Range: 313–314 MHz*

*Transmitting Power:  $\leq 6000 \mu\text{ V/m}$  (3 m)*

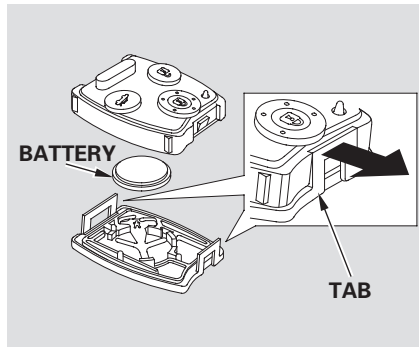
*Occupied Bandwidth:  $\leq 300$  kHz*

*Spurious Emission Limits:  $\leq 600 \mu\text{ V/m}$  (3 m)*

- *The user shall not change the transmission frequency, amplify the output capacity by such means as installing a transmission amplifier, install another aerial, or replace the original transmission aerial without permission of the Authority.*
  - *The equipment shall not cause any harmful interference with various authorized radio communication. If such interference is detected, operation of the equipment shall be suspended until a measure is taken to remove such interference.*
- *When using radio equipment with very small output capacity, the equipment must accept any interference caused by the emission of various radio communication equipment as well as industrial, scientific and medical facilities.*
  - *Use of such radio equipment is prohibited in an aeroplane and around an airport.*



## Remote Transmitter



3. Inside the transmitter, separate the inner cover from the keypad by releasing the two tabs on the cover.
4. Remove the old battery from the back of the inner cover, and note the polarity. Make sure the polarity of the new battery is the same (+ side facing down), then insert it into the back of the cover.
5. Install the parts in reverse order.

*As required by the FCC:*

*This device complies with Part 15 of the FCC rules. Operation is subject to the following two conditions: (1) This device may not cause harmful interference, and (2) this device must accept any interference received, including interference that may cause undesired operation.*

*Changes or modifications not expressly approved by the party responsible for compliance could void the user's authority to operate the equipment.*

*This device complies with Industry Canada Standard RSS-210.*

*Operation is subject to the following two conditions: (1) this device may not cause interference, and (2) this device must accept any interference that may cause undesired operation of the device.*