

Locking and Unlocking the Doors

Key Types and Functions

This vehicle comes with the following keys:

Master Keys

Ignition Key with Remote Transmitter*



Use the key to start and stop the engine, to lock and unlock the doors. You can also use the remote transmitter to lock and unlock the doors and to open the boot.

Retractable Key*



Key Types and Functions

All the keys have an immobilizer system. The immobilizer system helps to protect against vehicle theft.

Immobilizer System P. 115

The keys contain precision electronics. Adhere to the following advice to prevent damage to the electronics:

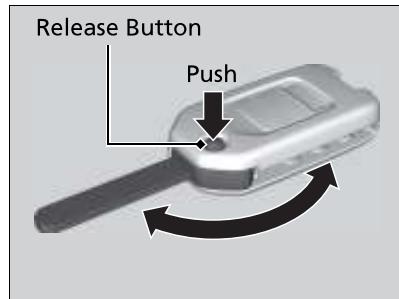
- Do not leave the keys in direct sunlight, or in locations with high temperature or high humidity.
- Do not drop the keys or set heavy objects on them.
- Keep the keys away from liquids.
- Do not take the keys apart except for replacing the battery.

If the circuits in the keys are damaged, the engine may not start, and the remote transmitter may not work.

If the keys do not work properly, have them inspected by a dealer.

Controls

■ Retractable key*



The key folds up inside the remote transmitter.

1. Press the release button to release the key out from the transmitter.
▶ Make sure to fully extend the key.
2. To close the key, press the release button then push the key inside the transmitter until you hear a click.

▶▶ Retractable key*

If the key is not fully extended, the immobilizer system may not work properly, and the engine may not start.
Avoid contact with the key whenever it extends or retracts.

■ Valet Key*



Can be used to start and stop the engine, and lock and unlock driver's door.

▶▶ Valet Key*

When you need to leave a key with a third party, leave the valet key.

Controls

* Not available on all models

Continued

Security System

Immobilizer System

The immobilizer system prevents a key that has not been pre-registered from starting the engine. Each key contains electronic transmitters that use electronic signals to verify the key.

Pay attention to the following when inserting the key into the ignition switch:

- Do not allow objects that emit strong radio waves near the ignition switch.
- Make sure the key is not covered by or touching a metal object.
- Do not bring a key from another vehicle's immobilizer system near the ignition switch.

Immobilizer System

NOTICE

Leaving the ignition key in the vehicle can result in theft or accidental movement of the vehicle. Always take the key with you whenever you leave the vehicle unattended.

If the system repeatedly does not recognize the coding of your key, contact your dealer.
If you have lost your key and cannot start your engine, contact your dealer.

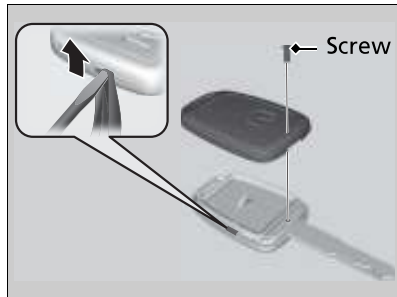
Do not alter the system or add other devices to it. Doing so may damage the system and make your vehicle inoperable.

Remote Transmitter Care

Replacing the Button Battery

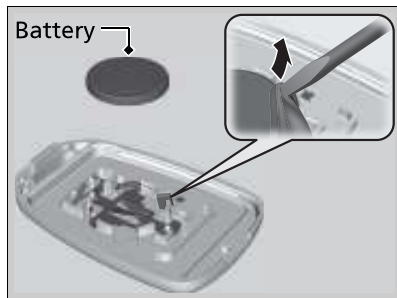
If the indicator does not come on when the button is pressed, replace the battery.

■ Ignition Key with Remote Transmitter*



Battery type: CR1620

1. Unscrew the cover with a small Phillips-head screwdriver.
2. Open the remote transmitter.
▶ Wrap the small flat-tip screwdriver with a cloth to prevent scratching the transmitter.
3. Remove the button battery with the small flat-tip screwdriver.
4. Make sure to replace the battery with the correct polarity.



▶ Replacing the Button Battery

NOTICE

An improperly disposed of battery can damage the environment. Always confirm local regulations for battery disposal.

Replacement batteries are commercially available or at a dealer.

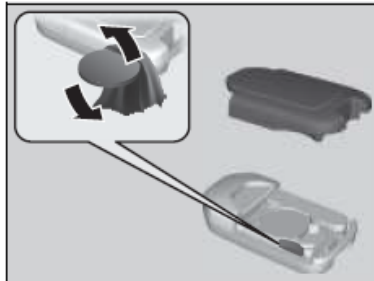
This symbol on the battery means that this product must not be treated as household waste.



* Not available on all models

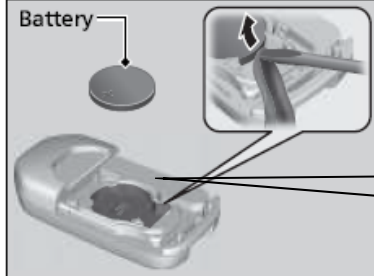
Continued

■ Retractable Key*



Battery type: CR2032

1. Remove the upper half of the cover by carefully prying on the edge with a coin.
▶ Wrap a coin with a cloth to prevent scratching the retractable key.



2. Remove the button battery with the small flat-tip screwdriver.
3. Make sure to replace the battery with the correct polarity.

FCC ID

FCC ID : MLBHLIK6-3T

Maintenance

FCC CAUTION

Changes or modifications not expressly approved by the party responsible for compliance could void the user's authority to operate the equipment.

This device complies with part 15 of the FCC Rules. Operation is subject to the following two conditions:
(1) This device may not cause harmful interference, and (2) this device must accept any interference received, including interference that may cause undesired operation.