



Voyager™ XP 1472g Series

Cordless Area-Imaging Scanner

Quick Start Guide

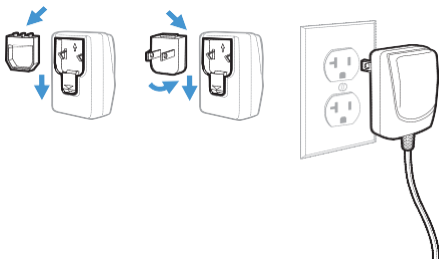
Note: Refer to your user's guide for information about cleaning your device.

For localized language versions of this document, go to www.honeywellaidc.com.

Getting Started

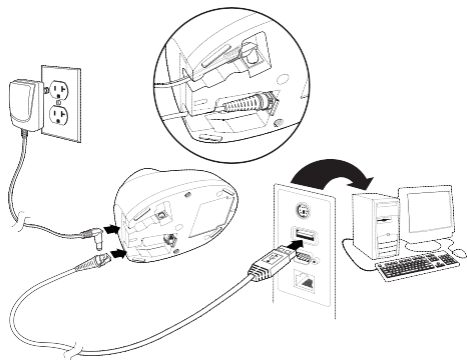
Turn off the computer's power before connecting the base, then power up the computer once the base is fully connected. When the base is connected and powered up, put the scanner in the base to establish a link. The green LED on the base flashes to indicate the scanner's battery is charging.

Power Supply Assembly (if included)

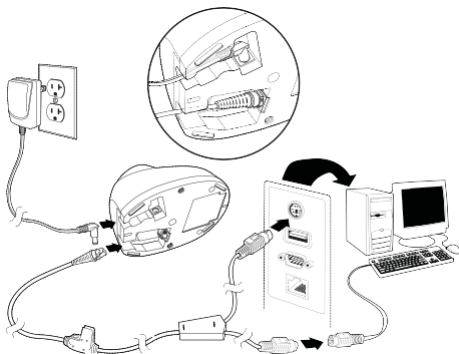


Note: The power supply must be ordered separately, if needed.

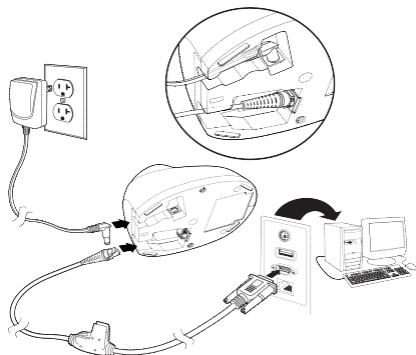
USB Connection:



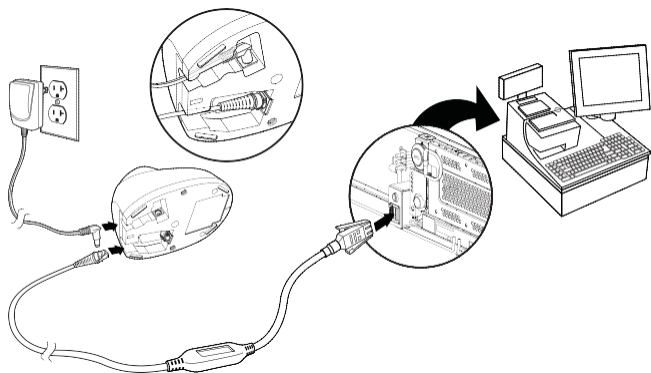
Keyboard Wedge Connection:



RS232 Serial Port Connection:



RS485 Connection:



Reading Techniques

The view finder projects an aiming dot that should be centered over the bar code, but it can be positioned in any direction for a good read.



Hold the scanner over the bar code, pull the trigger, and center the aiming dot on the bar code.



The aiming dot is smaller when the scanner is closer to the code and larger when it is farther from the code. Hold the scanner close to smaller bar codes, and farther away from large bar codes to get a proper read.

If the bar code is highly reflective (e.g., laminated), you may need to tilt the scanner at an angle so the bar code can be scanned.

Note: *If the scanner razzes when scanning a bar code, the link has not been established. If the scanner beeps once, the link has been established.*

Standard Product Defaults

The following bar code resets all standard product default settings.



Standard Product

Note: *PDF and 2D bar codes can only be read by Voyager model 1472g2D and cannot be read by model 1472g1D.*

RS485 Interface

The RS485 interface defaults to port 5B. If you have an IBM POS terminal using port 9B, scan the appropriate code below to program the terminal, then power cycle the cash register.



IBM Port 9B HHBCR-1
Interface



IBM Port 9B HHBCR-2
Interface

Note: *For additional RS485 interface selections, see the User's Guide for your product.*

USB Serial

Scan the following code to program the scanner to emulate a regular RS232-based COM Port. If you are using a Microsoft® Windows® PC, you will need to download a driver from the Honeywell website (www.honeywellaidc.com). The driver will use the next available COM Port number. Apple® Macintosh computers recognize the scanner as a USB CDC class device and automatically use a class driver.



USB Serial

Note: *No extra configuration (e.g., baud rate) is necessary.*

USB PC Keyboard

Scan the following code to program the scanner for a USB PC Keyboard.



USB PC Keyboard

Keyboard Country

Scan the appropriate country code that follows to program the keyboard layout for your country or language. By default, national character replacements are used for the following characters: # \$ @ [\] ^ _ { | } ~ Refer to the ISO 646 Character Replacements chart in your User Guide to view the character replacements for each country.



USA (Default)



Belgium



Denmark



Finland





Germany/Austria



Great Britain



Italy



Norway



Spain



Switzerland

Note: For a complete list of country codes, see the User's Guide for your product.

Locked Link

If you link a scanner to a base using the Locked Link Mode, other scanners are blocked from being linked if they are inadvertently placed into the base. If you do place a different scanner into the base, it will charge the scanner, but the scanner will not be linked.



Locked Link Mode
(Single Scanner)

To use a different scanner, you need to unlink the original scanner by scanning the Unlink Scanner bar code.

Override Locked Scanner

If you need to replace a broken or lost scanner that is linked to a base, scan the Override Locked Scanner bar code with a new scanner, and place that scanner in the base. The locked link will be overridden; the broken or lost scanner's link with the base will be removed, and the new scanner will be linked.



OverrideLockedScanner

Unlinking the Scanner

If the base has a scanner linked to it, that scanner must be unlinked before a new scanner can be linked. Once the previous scanner is unlinked, it will no longer communicate with the base. Scan the Unlink Scanner bar code to unlink a scanner.



Unlink Scanner

Trigger

The following bar codes will allow you to use the scanner in **Manual Trigger - Normal Mode** (need to press the trigger to read) or **Presentation mode** (the scanner is activated when it “sees” a bar code).



Manual Trigger - Normal
(Default)



Presentation Mode

Suffix

If you want a carriage return after the bar code, scan the **Add CR Suffix** bar code. To add a tab after the bar code, scan the **Add Tab Suffix** bar code. Otherwise, scan the **Remove Suffix** bar code to remove the suffixes.



Add CR Suffix



Add Tab Suffix



Remove Suffix

Add Code ID Prefix to all Symbologies

Scan the following bar code if you wish to add a Code ID prefix to all symbologies at once.



Add Code ID Prefix To All Symbologies
(Temporary)

Note: For a complete list of Code IDs, see the User's Guide for your product.

Function Code Transmit

When this selection is enabled and function codes are contained within the scanned data, the scanner transmits the function code to the terminal. Charts of these function codes are provided in your User's Guide. When the scanner is in keyboard wedge mode, the scan code is converted to a key code before it is transmitted.



Enable
(Default)



Disable

Data Format Editor Instructions

The following are abbreviated instructions for entering a data format. For complete instructions refer to your User's Guide.

- Step 1. Scan the **Enter Data Format** symbol.
- Step 2. Primary/Alternate Format: scan **0** for Primary Format
- Step 3. Terminal Type: scan **099** for any terminal type
- Step 4. Code I.D.: scan **99** for any bar code type
- Step 5. Length: scan **9999** for any length bar code.
- Step 6. Editor commands: use the Programming Chart that follows.
- Step 7. Scan **Save** to save your entries.



Enter Data Format



Clear All Data Formats



Save

Programming Chart



0



1



2



3



4



5



6



7



8



9



A



B



C



D



E



F



Save

EZConfig-Scanning

To access additional features for the scanner, use EZConfig-Scanning, an online configuration software tool, available from our website.

Support

To search our knowledge base for a solution or to log into the Technical Support portal and report a problem, go to www.hsmcontactsupport.com.

Documentation

Product documentation is available at www.honeywellaidc.com.

Limited Warranty

For warranty information, go to www.honeywellaidc.com and click **Get Resources > Product Warranty**.

Patents

For patent information, see www.hsmpats.com.

Disclaimer

Honeywell International Inc. (“HII”) reserves the right to make changes in specifications and other information contained in this document without prior notice, and the reader should in all cases consult HII to determine whether any such changes have been made. The information in this publication does not represent a commitment on the part of HII.

HII shall not be liable for technical or editorial errors or omissions contained herein; nor for incidental or consequential damages resulting from the furnishing, performance, or use of this material. HII disclaims all responsibility for the selection and use of software and/or hardware to achieve intended results.

This document contains proprietary information that is protected by copyright. All rights are reserved. No part of this document may be photocopied, reproduced, or translated into another language without the prior written consent of HII.

Copyright © 2019 Honeywell International Inc. All rights reserved.



Agency Model: 1472g

Product documentation is available at www.honeywellaidc.com.	La documentation sur le produit est disponible à www.honeywellaidc.com.	La documentation du produit est disponible sur le site www.honeywellaidc.com.	La documentazione sul prodotto è disponibile sul sito www.honeywellaidc.com.	Die Produktdokumentation ist unter www.honeywellaidc.com verfügbar.	La documentación del producto está disponible en www.honeywellaidc.com.	La documentación del producto está disponible en www.honeywellaidc.com.	A documentação do produto está disponível em www.honeywellaidc.com.
产品文档请参见 www.honeywellaidc.com .	產品文件集請參見 www.honeywellaidc.com 。	製品ドキュメントは www.honeywellaidc.com で利用可能です。	제품 설명서는 www.honeywellaidc.com 에서 확인할 수 있습니다.	Документацию по изделию можно найти на сайте www.honeywellaidc.com .	Ürün belgelerine www.honeywellaidc.com adresinden ulaşılabilir.	توفر وثائق المنتج على الموقع التالي www.honeywellaidc.com .	תיעוד המוצר זמין בכתובת www.honeywellaidc.com .
Publicly downloadable certificates are available at www.honeywellaidc.com/compliance .	Les certificats téléchargeables accessibles au public sont disponibles à www.honeywellaidc.com/compliance .	Les certificats téléchargeables publiquement sont disponibles sur www.honeywellaidc.com/compliance .	I certificati pubblicamente scaricabili sono disponibili sul sito www.honeywellaidc.com/compliance .	Zertifikate stehen unter www.honeywellaidc.com/compliance öffentlich zum Download zur Verfügung.	Hay certificados descargables disponibles públicamente en www.honeywellaidc.com/compliance .	Puede descargar los certificados de acceso público en www.honeywellaidc.com/compliance .	Certificados disponíveis ao público para download em: www.honeywellaidc.com/compliance .
如需公开下载的证书，请访问 www.honeywellaidc.com/compliance 。	如需可公開下載的證書，請造訪 www.honeywellaidc.com/compliance 。	一般にダウンロード可能な証明書は www.honeywellaidc.com/compliance で利用可能です。	공개적으로 다운로드 가능한 인증서는 www.honeywellaidc.com/compliance 에서 구할 수 있습니다.	Публичные сертификаты доступны на странице www.honeywellaidc.com/compliance .	Halkin indirebileceği sertifikalar şu adreste mevcuttur: www.honeywellaidc.com/compliance .	الشهادات القابلة للتنزيل متاحة للعمامة على الموقع www.honeywellaidc.com/compliance .	אישורים להורדה עבור המוצר זמין בכתובת www.honeywellaidc.com/compliance .

FCC Part 15 Subpart B Class B
 This device complies with part 15 of the FCC Rules. Operation is subject to the following two conditions:
 1. This device may not cause harmful interference.
 2. This device must accept any interference received, including interference that may cause undesired operation.
 This equipment has been tested and found to comply with the limits for a Class B digital device pursuant to part 15 of the FCC Rules. These limits are designed to provide reasonable protection against harmful interference in a residential installation. This equipment generates, uses, and can radiate radio frequency energy and, if not installed and used in accordance with the instructions, may cause harmful interference to radio communications. However, there is no guarantee that interference will not occur in a particular installation. If this equipment does cause harmful interference to radio or television reception, which can be determined by turning the equipment off and on, the user is encouraged to try to correct the interference by one or more of the following measures:
 • Reorient or relocate the receiving antenna.
 • Increase the separation between the equipment and receiver.
 • Connect the equipment into an outlet on a circuit different from that to which the receiver is connected.
 • Consult the dealer or an experienced radio or television technician for help.
 If necessary, the user should consult the dealer or an experienced radio/television technician for additional suggestions. Honeywell International Inc. is not responsible for any radio or television interference caused by unauthorized modifications of this equipment or the substitution or attachment of connecting cables and equipment other than those specified by Honeywell International Inc.. The correction is the responsibility of the user.

Caution: Any changes or modifications made to this equipment not expressly approved by Honeywell International Inc. may void the authorization to operate this equipment.	Mise en garde : Toute modification apportée à cet équipement ou l'usage de tout périphérique ou accessoire qui ne sont pas expressément approuvés par Honeywell International Inc. peut annuler l'autorisation d'utiliser cet équipement.	Mise en garde : tous les changements ou les modifications apportés à cet équipement ou toute utilisation de périphériques ou accessoires non expressément approuvés par Honeywell International Inc. peuvent annuler l'autorisation d'utiliser cet équipement.	Attenzione: qualsiasi variazione o modifica apportata a questo apparecchiatura, oppure qualsiasi utilizzo di qualsiasi periferica o accessorio, non espressamente approvato da Honeywell International Inc., potrebbero annullare l'autorizzazione concessa all'utente per utilizzare l'apparecchiatura.	Vorsicht: Veränderungen an diesem Gerät sowie die Verwendung von Peripheriegeräten und Zubehör ohne ausdrückliche Genehmigung von Honeywell International Inc. können dazu führen, dass die Betriebsgenehmigung für dieses Gerät erlischt.	Precaución: Cualquier modificación o cambio realizado en este equipo, o el uso de periféricos o de accesorios que no se haya aprobado expresamente por Honeywell International Inc., puede anular la autorización para utilizar este equipo.	Precaución: cualquier cambio o modificación a este equipo, o el uso de cualquier periférico o accesorio que no esté expresamente aprobado por Honeywell International Inc. puede invalidar la autorización para usarlo.	Atenção: qualquer alteração ou modificação ou o uso de qualquer periférico ou acessório não aprovado expressamente pela Honeywell International Inc. neste equipamento poderá invalidar a autorização de operá-lo.
注意: 未经 Honeywell International Inc. 明确准许，对本设备进行任何更改或修改，或使用任何外围设备和附件，可能会使操作本设备的授权失效。	注意: 凡未經 Honeywell International Inc. 明確准許即擅自變更或改造本設備或週邊或配件者，可能無權再操作本設備。	警告: Honeywell International Inc. 的明示的承認なしに、この機器を変更または変更する、あるいは周辺機器または付属品を使用すると、この機器を操作する権限が無効になる場合があります。	주의: Honeywell International Inc. 에 의해 확실한 승인을 받지 않은 방법으로 본 장비를 변경 또는 개조하거나 주변 장치 또는 액세서리를 사용하는 경우 장비를 작동할 수 있는 승인이 취소될 수 있습니다.	Внимание! Любые изменения или модификации данного оборудования или использование периферийного оборудования или принадлежностей, не одобренных компанией Honeywell International Inc. могут привести к запрету эксплуатации данного оборудования.	تحذير: قد تؤدي أي تغييرات أو تعديلات على هذا الجهاز غير مصادق عليها من شركة Honeywell International Inc. إلى إلغاء ترخيص تشغيل هذا الجهاز.	זהירות: שינויים או התאמות שעשויות לא לא אישור מפורש של Honeywell International Inc יעשוים לבטל את הרשאה להפעיל ציוד זה.	Dikkat: Bu ekipmanda Honeywell International Inc.tarafından açığa konulmamış düzenleme veya değişiklikler yapması ya da çevre birimi veya aksesuarların kullanılması, ekipmanı kullanma yetkisini geçersiz kılabilir.

Canadian Compliance
 This Class B digital apparatus complies with Canadian RSS-247. Operation is subject to the following conditions:
 1. This device may not cause harmful interference.
 2. This device must accept any interference received, including interference that may cause undesired operation.

Conformité à la réglementation canadienne
 Cet appareil numérique de la Classe B est conforme à la norme RSS-247 du Canada. Son fonctionnement est assujéti aux conditions suivantes:
 1. Cet appareil ne doit pas causer de brouillage préjudiciable.
 2. Cet appareil doit pouvoir accepter tout brouillage reçu, y compris le brouillage pouvant causer un fonctionnement indésirable.

RF Exposure
 The equipment complies with FCC RF exposure limits set forth for an uncontrolled environment. The equipment must not be co-located or operating in conjunction with any other antenna or transmitter.

IC RF Radiation Exposure
 This equipment complies with IC radiation exposure limits set forth for an uncontrolled environment.

Déclaration d'exposition aux radiations
 Cet équipement est conforme aux limites d'exposition aux rayonnements IC établies pour un environnement non contrôlé.

Para su uso en México, la operación de este equipo está sujeta a las siguientes dos condiciones:
 1. Es posible que este equipo o dispositivo no cause interferencia perjudicial.
 2. Este equipo o dispositivo debe aceptar cualquier interferencia, incluyendo la que pueda causar su operación no deseada.

TÜV R Statement TÜV R listed: UL 60950-1, Second Edition and CSA C22.2 No.60950-1-07, Second Edition.	Normes TÜV R Homologué TÜV R : UL 60950-1, seconde édition et CSA C22.2 No. 60950-1-07, seconde édition.						
---	--	--	--	--	--	--	--

Use only shielded data cables with this system. This unit has been tested with cables less than 3 meters. Cables greater than 3 meters may not meet class A performance.	Utiliser uniquement des câbles de données blindés avec ce système. L'appareil a été testé avec des câbles de moins de 3 mètres. Les câbles de longueur supérieure à 3 mètres peuvent ne pas satisfaire à la performance de la classe A.	Utilisez uniquement des câbles de données blindés avec ce système. Ce dispositif a été testé avec des câbles de moins de 3 mètres. Il est possible que les câbles de plus de 3 mètres ne permettent pas d'atteindre des performances de classe A.	Utilizzare solo cavi dati schermati con questo sistema. Questa unità è stata testata con cavi di lunghezza inferiore a 3 metri. I cavi di lunghezza superiore a 3 metri potrebbero non essere conformi alle prestazioni di classe A.	Für dieses System nur abgeschirmte Datenkabel verwenden. Dieses System wurde mit Kabeln unter 3 Metern Länge geprüft. Kabel mit einer Länge von über 3 Metern erfüllen möglicherweise nicht die Richtlinien der Klasse A.	Utilice sólo cables de datos blindados con este sistema. Esta unidad se ha probado con cables de longitud inferior a 3 metros. Cables superiores a 3 metros quizá no satisfagan los requisitos de rendimiento de la clase A.	Use únicamente cables protegidos para datos con este sistema. Esta unidad ha sido evaluada con cables de menos de 3 metros. Es posible que los cables de más de 3 metros no cumplan con el desempeño de clase A.	Use somente cabos de dados blindados com este sistema. Esta unidade foi testada com cabos com menos de 3 metros. Cabos com mais de 3 metros não atendem o desempenho de classe A.
此系统仅能使用屏蔽数据电缆。此设备是以短于 3 米的电缆进行的测试。长度超过 3 米的电缆可能无法满足 A 级性能。	此系統只能使用包圍的資料傳輸線。此裝置是使用不到 3 公尺長的電纜進行測試。超過 3 公尺長的電纜可能無法達到 A 級裝置效能。	このシステムにはシールド付きデータケーブルのみを使用してください。この装置は長さ 3 m 以下のケーブルでテストされています。3 m 以上のケーブルはクラス A の性能を満たさない場合があります。	이 시스템에는 차폐된 데이터 케이블만 사용하십시오. 본 장치는 3 미터 미만의 케이블로 테스트를 받았습니다. 30 미터를 초과하는 케이블을 사용하면 Class A 성능을 만족시키지 못할 수 있습니다.	Используйте с этой системой только экранированные кабели передачи данных. Это устройство прошло испытания с использованием кабелей длиной менее 3 метров. Рабочие характеристики кабелей длиной свыше 3 м могут не соответствовать классу А.	استخدم فقط كابلات البيانات المصحح مع هذا النظام. تم اختبار هذه الوحدة بواسطة كابلات يقل طولها عن 3 أمتار. قد لا تتطابق الكابلات التي يزيد طولها عن 3 أمتار مع أداء الفئة A.	יש להשתמש בכבל נתונים ממוכנים בלבד עם מערכת זו. מערכת זו נבדקה באמצעות כבלים באורך של פחות מ-3 מטרים. כבלים באורך יתר מ-3 מטרים עלולים שלא לעמוד בבדיקות דרגה A.	Use somente cabos de dados blindados com este sistema. Esta unidade foi testada com cabos com menos de 3 metros. Cabos com mais de 3 metros não atendem o desempenho de classe A.

Patents For patent information, refer to www.hsmpats.com .	Brevets Veuillez consulter le site www.hsmpats.com pour obtenir des renseignements au sujet du brevet.	Brevets Pour plus d'informations sur les brevets, visitez la page www.hsmpats.com .	Brevetti Per i dettagli sui brevetti, fare riferimento al sito Web www.hsmpats.com .	Patente Patentinformationen sind unter www.hsmpats.com erhältlich.	Patentes Para obtener información sobre las patentes, visite www.hsmpats.com .	Patentes Para obtener información sobre patentes, consulte www.hsmpats.com .	Patentes Para obter informações sobre patente, consulte www.hsmpats.com .
专利 有关专利信息，请参阅 www.hsmpats.com 。	專利 相關專利資訊請參閱 www.hsmpats.com 中的說明。	特許 特許情報については www.hsmpats.com を参照してください。	특허 특허 정보는 www.hsmpats.com 를 참조하십시오.	Патенты Информация о патентах доступна на странице www.hsmpats.com .	براءات الاختراع للحصول على معلومات براءة الاختراع قم بزيارة الموقع التالي: www.hsmpats.com .	פטנטים למידע על הפטנט ראה www.hsmpats.com .	Patentler Patent bilgileri için www.hsmpats.com adresine gidin.

Product Environmental Information Refer to www.honeywellaidc.com/environmental for the RoHS / REACH / WEEE information.	Renseignements relatifs à l'environnement à propos des produits Reportez-vous à la page www.honeywellaidc.com/environmental pour obtenir des renseignements concernant les directives RoHS/REACH/WEEE.	Informations environnementales sur les produits Reportez-vous au site www.honeywellaidc.com/environmental pour obtenir les informations sur les directives RoHS/REACH/WEEE.	Informazioni ambientali relative al prodotto Consultare il sito web www.honeywellaidc.com/environmental per informazioni su RoHS/REACH/RAEE.	Informationen zur Umweltverträglichkeit von Produkten Unter www.honeywellaidc.com/environmental Sie Informationen über RoHS/REACH/WEEE.	Información ambiental del producto Consulte www.honeywellaidc.com/environmental para obtener información sobre RoHS/REACH/WEEE.	Información ambiental de producto Consulte la información RoHS/REACH/WEEE en www.honeywellaidc.com/environmental .	Informações ambientais sobre produtos Consulte a página www.honeywellaidc.com/environmental para obter informações sobre as normas RoHS/REACH/WEEE.
产品环境信息 有关 RoHS / REACH / WEEE 信息，请参阅 www.honeywellaidc.com/environmental 。	產品環境資訊 請參閱 www.honeywellaidc.com/environmental 以瞭解 RoHS / REACH / WEEE 資訊。	製品の環境情報 RoHS / REACH / WEEE に関する情報については、 www.honeywellaidc.com/environmental を参照してください。	제품 환경 정보 RoHS / REACH / WEEE 정보는 www.honeywellaidc.com/environmental 에서 참조하십시오.	Экологическая информация о продукции Информация о соответствии требованиям RoHS / REACH / WEEE приведена на сайте www.honeywellaidc.com/environmental .	المواصفات البيئية للمنتج يرجى الرجوع إلى www.honeywellaidc.com/environmental للحصول على معلومات حول توجيهات RoHS / REACH / WEEE.	מידע סביבתי של המוצר עיון ב- www.honeywellaidc.com/environmental עבור מידע לגבי RoHS / REACH / WEEE.	Ürün Çevre Bilgileri RoHS / REACH / WEEE bilgileri için www.honeywellaidc.com/environmental adresine bakın.

Bluetooth Frequency 2402-2480 MHz Maximum power 20dBm	Bluetooth Fréquences 2402 à 2480 MHz Puissance maximale 20dBm	Bluetooth Fréquences 2402 à 2480 MHz Puissance maximale 20dBm	Bluetooth Frequenza 2402-2480 MHz Potenza massima 20dBm	Bluetooth Frequenz 2402-2480 MHz Max. Leistung 20dBm	Bluetooth Frecuencia 2402 MHz a 2480 MHz Potencia máxima 20dBm	Bluetooth Frecuencia: 2402-2480 MHz Potencia máxima: 20dBm	Bluetooth 2402-2402 MHz מגה הרץ עוצמה מרבית 20dBm	Bluetooth 2402-2480 MHz 最大功率 20dBm
Bluetooth 频率 2402-2480 MHz 最大输出功率 20dBm	Bluetooth 周波数 2402 ~ 2480 MHz 最大出力 20dBm	Bluetooth 주파수 2402-2480 MHz 최대 전력 20dBm	Bluetooth Частота 2402-2480 МГц Максимальная мощность 20 дБм	Bluetooth Frekvens 2402 - 2480 MHz Maksimum güç 20dBm	Bluetooth التردد 2402-2480 مجاهرة 20 أقصى قوة 20 ديسيبل	Bluetooth 2402-2402 MHz מגה הרץ עוצמה מרבית 20dBm	Bluetooth 2402-2480 MHz 最大功率 20dBm	

Model: 1472g

CAUTION: Improper battery replacement or incompatible device usage may result in risk of burns, fire, explosion, or other hazard. Dispose of batteries according to local regulations.	ATTENTION : Un remplacement inadéquat de la batterie ou une utilisation incompatible de l'appareil peut présenter des risques de brûlures, d'incendie, d'explosion ou d'autres dangers. Jetez les piles conformément aux réglementations locales.	MISE EN GARDE : Le remplacement incorrect de la pile ou l'usage d'un appareil non compatible peut présenter des risques de brûlures, d'incendie, d'explosion ou d'autres dangers. Éliminez les piles usagées conformément aux réglementations locales.	Attenzione. La sostituzione inadeguata delle batterie o un uso incompatibile del dispositivo possono causare rischi di ustioni, incendi, esplosioni o altri pericoli. Smaltire le batterie agli in conformità ai regolamenti locali.	VORSICHT. Ungeeignete Ersatz-Akkus oder nicht kompatibel Gerätenutzung kann zu Verbrennungen, Feuer, Explosion oder anderen Gefahren führen. Entsorgen Sie Batterien gemäß den lokalen Richtlinien.	PRECAUCIÓN: El reemplazo inadecuado de la batería o el uso de un dispositivo incompatible pueden dar como resultado quemaduras, un incendio, explosión u otros riesgos. Descarte todas las baterías según las regulaciones locales.	PRECAUCIÓN: El reemplazo inadecuado de la batería o el uso de un dispositivo incompatible puede presentar riesgo de quemaduras, incendio, explosión, u otro tipo de riesgos. Deseche las baterías de acuerdo a las normativas locales.	CUIDADO: a substituição incorreta da bateria ou o uso de um dispositivo incompatível pode resultar em riscos de queimaduras, incêndio, explosão ou outros perigos. Descarte as baterias de acordo com as regulamentações locais.
注意: 电池更换不当或使用不兼容的设备可能导致烧伤、火灾、爆炸风险或其他危险。请遵照当地法规弃置电池。	注意: 不當的電池更換或使用不兼容的裝置可能會導致灼傷、火災、爆炸風險或引起其他的危險。請根據當地法規棄置電池。	警告: 不適切なバッテリーの交換または互換性のないデバイスの使用によって、やけどや引火、破裂の危険が生じるおそれがあります。バッテリーを処分する際は、地域の規則に従ってください。	주의: 배터리를 부적절하게 교체하거나 비호환 장치를 사용하면 화상, 화재, 폭발 또는 기타 위험이 발생할 수 있습니다. 지역 규정에 따라 배터리를 폐기하십시오.	ВНИМАНИЕ! Неправильная замена батареи или использование несоместимого устройства могут привести к ожогам, пожару, взрыву или возникновению других опасных ситуаций. Утилизируйте аккумуляторы в соответствии с местным законодательством.	DİKKAT: Pilin düzgün takılmaması veya uyumsuz cihaz kullanımı yangın, yangın, patlama ve diğer tehlikelere neden olabilir. Pilleri yerel düzenlemelere göre bertaraf edin.	تحذير: قد يتسبب استخدام بطارية غير صحيحة أو الاستعمال غير المتوافق للجهاز في الإصابة بحروق أو اندلاع حريق أو حدوث انفجارات أو التسبب بمخاطر أخرى. يجب التخلص من البطاريات وفقاً للوائح المحلية.	זהירות: החלפת סוללה לא נכונה או שימוש לא מתאים בתקון עלול לגרום לסיכון של כוונות, שריפה, פיצוץ או סכנה חמורה. יש להשליך סוללות בהתאם לתקנות מקומיות.

This document was prepared and executed in the English language. In the event this document is translated into another language and a conflict arises between the English version and a non-English version, the English version shall prevail, it being recognized and acknowledged that the English language version most clearly expresses the intent of the parties. Any notice or communication given in connection with this document must include a version in the English language.	Ce document a été préparé et exécuté dans la langue anglaise. Dans l'éventualité où le document serait traduit dans une autre langue et qu'un litige survient entre la version en anglais et la version autre qu'en anglais, la version en anglais prévaudra, étant confirmé et reconnu que la version en anglais exprime de façon plus précise l'intention des parties. Tout avis ou toute communication relatif à ce document doit inclure une version en anglais.	Ce document a été préparé et finalisé en anglais. Si ce document est traduit dans une autre langue et si un conflit survient entre la version en anglais et la version traduite, la version en anglais prévaudra tant il est reconnu et établi qu'elle exprime le plus clairement les intentions des parties. Tout avis ou communication produit en relation avec ce document doit comporter une version en anglais.	Questo documento è stato preparato e redatto in lingua inglese. In caso di traduzione in altre lingue, nell'eventualità sorgano conflitti fra la versione non inglese e quella inglese, prevarrà quest'ultima in quanto viene riconosciuto e accettato che la versione in lingua inglese esprime più chiaramente gli accordi fra le parti. Qualsiasi notifica o comunicazione inviata in rapporto a questo documento deve includere una versione in lingua inglese.	Dieses Dokument wurde in englischer Sprache erstellt und ausgefertigt. Wenn dieses Dokument in eine andere Sprache übersetzt wird, und ein Konflikt zwischen der englischen und nicht-englischen Fassung auftritt, hat die englische Fassung Vorrang, da die Parteien anerkennen, dass die Fassung in englischer Sprache ihren Absichten am deutlichsten Ausdruck verleiht. Alle Hinweise oder Mitteilungen in Zusammenhang mit diesem Dokument müssen auch in einer Fassung in englischer Sprache erfolgen.
---	--	--	---	--

