

Honeywell

THE POWER OF **CONNECTED**



Connected Freight

Quick Start Guide

This document covers the following models:

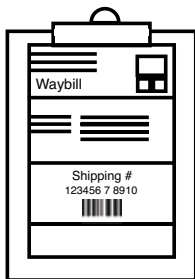
- 3G-ST-THALP-C1 Gateway
- RTHAL-C1 Tag

STEP 1:

Gather Materials

Locate a fully charged gateway, a CT-50 or mobile device, pre-paid return shipping slip, a clear shipping pouch / sleeve and appropriate amount of tags for the shipment.

Check the physical quantity of the gateway and tags against the amount listed in the OBD and on the shipping document



STEP 2:

Check Gateway Battery Status

While still plugged in, confirm that the battery icon displays a green LED light- this indicates a full charge

Fully charged

Solid green



Charging

Solid red



Faulty Battery OR Battery Has No Charge Left

Alternately blinking red and green



If Battery has no charge left, the Gateway needs 15-20 minutes to pre-charge, before the battery starts charging normally.

STEP 3:

Pair Gateway With Tags Before They're Powered On

Pair each tag to the gateway by holding the gateway pairing button and tapping the tag to the gateway, verifying a successful pairing has occurred each time (see user guide).



Successful Pairing



NFC button solid green



Short beep



The Tag LED light will not display, because the Tag is not powered on.

Failed Pairing



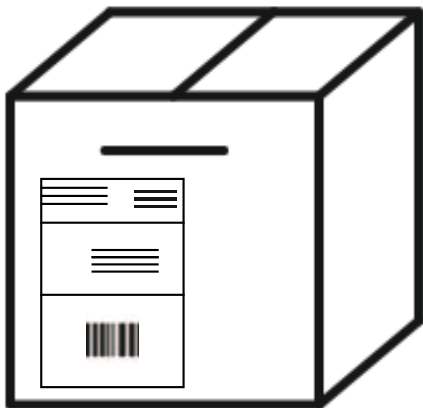
NFC button blinks red



Long beep

STEP 4:

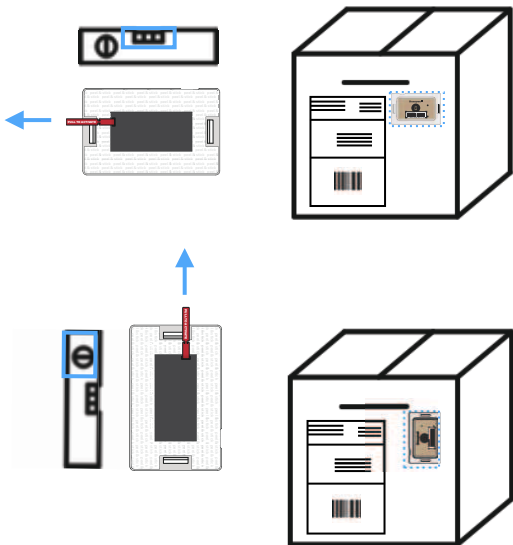
Apply Shipping Labels to Box



STEP 5:

Turn on Tag Battery

Remove the battery strips from each tag and verify they are powered on (see user guide). Then remove the large sticker backing and adhere the tag to the shipment



STEP 6:

Confirm Tags are Powered On



Battery Activated and Tag Paired with Gateway

LED blinks red 3 times, then blinks green once, then turns off.



x3



x1



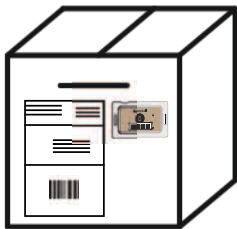
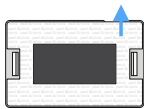
Bad Tag

No LED indicator

STEP 7:

Attach Tags to Shipment

Then remove the large sticker backing and adhere the tag to the shipment.

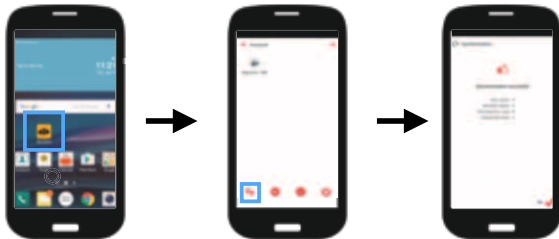


STEP 8:

Launch and Refresh Movilizer App

- Open the Movilizer app on the Ct-50 or Mobile device.
- Click the refresh button at the bottom of the app (two arrows), to display the most current shipment information.
- Click Ok once the screen is refreshed (thumbs up).

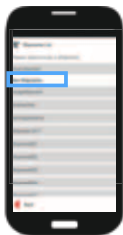
Note: Android and iOS Movilizer apps have different visual treatments, but the same screens / process.



STEP 9:

Select Shipment

Click the “Shipments – OBD” icon and locate the Shipment ID under the “New Shipments:” list and click it



STEP 10: **Review Shipment Info**

Review the basic shipment information, route, monitoring and all other info to ensure it is correct against the information available to you on the shipping document.



OPTIONAL STEP

View Instructions

Click “View Instructions” for step-by-step information and video tutorials on how to set up shipments with Gateways & Tags.



STEP 11:

Pair Gateway With Shipment

Click the “Scan Gateway” button at the bottom of the screen and scan the barcode on the gateway using the rear facing camera on the mobile device. This pairs the Gateway with the Shipment for tracking purposes.



STEP 12:

Confirm # of Tags and Find Tag

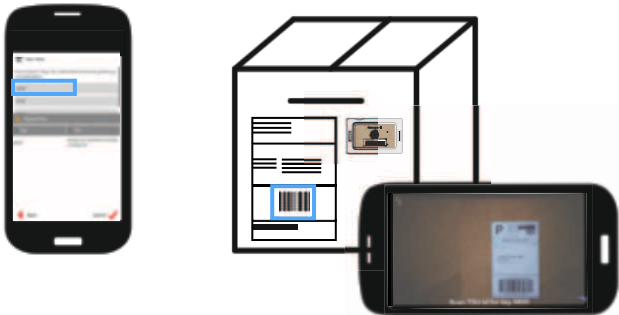
Scanning the Gateway will bring up the list of tags you already connected to the gateway. Verify that the correct number of tags are listed here. Find the shipment Tag.



Step 13:

Pair Tags With Boxes / Pallets

Find the tag ID in the OBD app tag list and click on it, this will bring up a scanner. Scan the unique box/ pallet barcode ID where you attached your tag. This pairs the Tag with the box or pallet it's on, to identify which Traceable Shipping Unit (TSU) has been compromised if a sensor limit is exceeded. Repeat until all tags are associated.



STEP 14:

Review Shipment Data & Complete Shipment

Click next and review all the data is correct in the shipment. Click

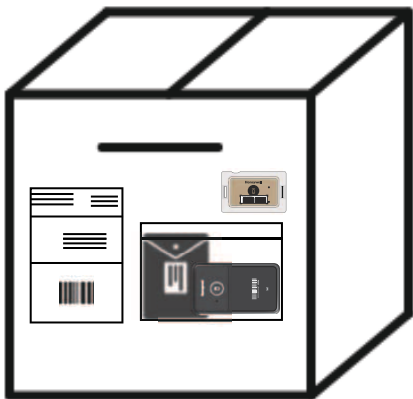
“Complete Shipment.”



STEP 15:

Attach Gateway to the Box or Pallet

Place the gateway, shipping document and prepaid return shipping packaging in the shipment envelope.



Discuss Shipment Loading Requirements

When loading pallets with Tags and Gateways onto a truck, try to place one pallet in the back of the truck, one pallet in the center of the truck and one pallet with the Gateway right by the door.

Make sure that the Gateway faces the truck door, and is as close to the door as possible to ensure the Gateway signal can best maintain cell connectivity.



Support

To search our knowledge base for a solution or to log into the Technical Support portal and report a problem, go to www.hsmcontactsupport.com.

User Documentation

For the user guide and other documentation, go to www.honeywellaidc.com.

Limited Warranty

For warranty information, go to www.honeywellaidc.com and click **Get Resources > Product Warranty**.

Patents

For patent information, see www.hsmpats.com.

Trademarks

Intel and the Intel logo are trademarks of Intel Corporation or its subsidiaries in the U.S. and/or other countries.

Other product names or marks mentioned in this document may be trademarks or registered trademarks of other companies and are the property of their respective owners.

Disclaimer

Honeywell International Inc. (“HII”) reserves the right to make changes in specifications and other information contained in this document without prior notice, and the reader should in all cases consult HII to determine whether any such changes have been made. The information in this publication does not represent a commitment on the part of HII.

HII shall not be liable for technical or editorial errors or omissions contained herein; nor for incidental or consequential damages resulting from the furnishing, performance, or use of this material. HII disclaims all responsibility for the selection and use of software and/or hardware to achieve intended results.

This document contains proprietary information that is protected by copyright. All rights are reserved. No part of this document may be photocopied, reproduced, or translated into another language without the prior written consent of HII.

Copyright © 2017 Honeywell International Inc. All rights reserved.