

Instruction Manual

RPWL200A Wireless Portable Bell Push

Thank you for choosing this product. Please use the following instructions to ensure correct installation and use. Keep these instructions in a safe place for future reference.

Package contains

Bell push	You will need:
CR2032 battery	• Small flat bladed screwdriver
2 Mounting screws	• Phillips head screwdriver
2 Wall anchors	• 1/4" drill bit
Adhesive pad	

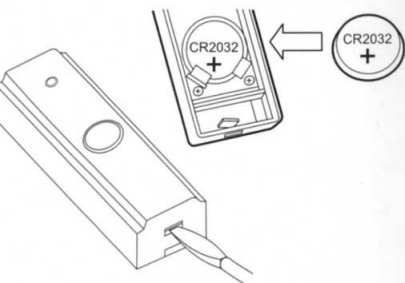
Safety

Always follow the manufacturer's advice when using power tools and wear suitable protective equipment (i.e. safety goggles) when drilling holes.

Before drilling holes in walls, check for hidden electrical cables and water pipes. The use of a cable/pipe locator may be advisable if in doubt.

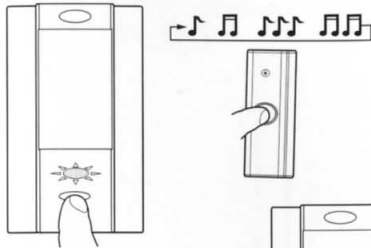
Installation Guide

1. Open bell push & insert battery.



2. To change tunes or to program new push: Press and release chime programming button; LED will illuminate. Press push button to hear the tune. Press push button again to hear another tune.

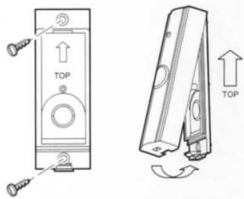
Refer to chime instruction manual for detail.



3. To save the tune selected:



4. Install bell push back cover to wall, using hardware provided. Close the cover.



Note: Before final installation, adjust distance and position between push and chime to optimize the chime within your environment. Dense walls and metal can reduce range.

Specification	Bell Push
Operating Temperature	14°F to 104°F -10°C to +40°C
RF Frequency – US	345 MHz
RF Power	< 1 mW
Battery Type	CR2032
Battery Life (5 operations/day)	18 months
Rainproof	Passes UL1598 rain test

Troubleshooting

Two 'beep' sounds are heard and LED flashing twice after the normal chime sound...

This indicates a low battery in the chime. Install new batteries, type LR14 C size alkaline batteries.

Three 'beep' sounds are heard and LED flashing three times after the normal chime sound...

This indicates a low battery in the bell push that activated the chime. Install a new battery, type CR2032.

When the bell push is operated, the red feedback light does not turn on, or is only on for a short time...

In normal operation, the red light will turn on for 1 second. When the battery is weak, the light will only turn on for a short time. Install a new battery, type CR2032.

Chime does not work...

- Check that the batteries are the correct type. Only use alkaline batteries for chime.
- Check that the batteries are fitted correctly (polarity correct).
- Check that the batteries are not loose.
- The chime could be out of range of the bell push. Try the chime in a different location.
- The chime might not have learned the identity of the bell push. Follow the programming procedure in step 2.

Note: Do not press program button for more than 15 seconds; this will delete all the memory! Repeat programming procedure in step 2 to restore operation.

Chime does not play tune selected...

Chime might not have learned the tune selected. Follow programming sequence in step 2.

Chime does not sound...

- Check the chime switch position.
- Check that the volume control is not at the minimum setting.

Range is reduced...

- Metal structures, including uPVC door frames, can reduce the range of the product. Avoid mounting the telephone ringer or chime on or near metal structures.
- Other equipment can cause radio interference that affects your chime.
- Walls and ceilings will reduce the range.

Weak batteries will reduce range. Replace every 12-18 months. In cold conditions (below 41°F (5°C)) batteries may need to be replaced more often.

Disposal & Recycling

Batteries and waste electrical products should not be disposed of with household waste. Please recycle where these facilities exist. Check with your local authority or retailer for recycling advice.

Guarantee

Honeywell guarantees this product for 1 year from the date of purchase. Proof of purchase is required; this does not affect your statutory rights. If you require further information about your product, call the Honeywell helpline at 1-800-468-1502.

Declaration

Honeywell hereby declares that this product complies with Part 15 of the FCC rules and Industrial Canada standards. This device operation is subject to the following two conditions: (1) This device may not cause harmful interference, and (2) This device must accept any interference received, including interference that may cause undesired operation.

Caution: Changes or modifications not expressly approved by the party responsible for regulatory compliance could void the users authority to operate the equipment.