

# Honeywell

THE POWER OF **CONNECTED**

## 8680i

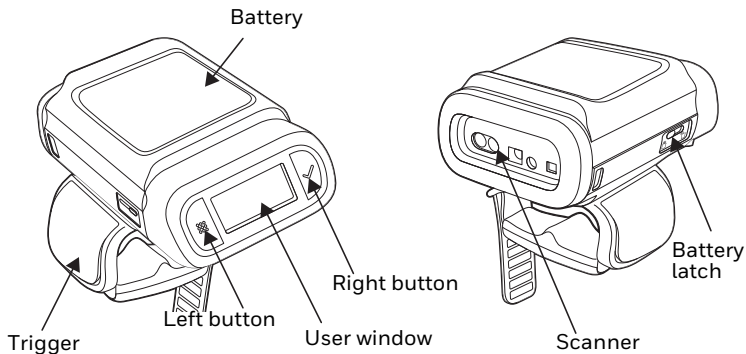
---

Wearable Scanner

Quick Start Guide

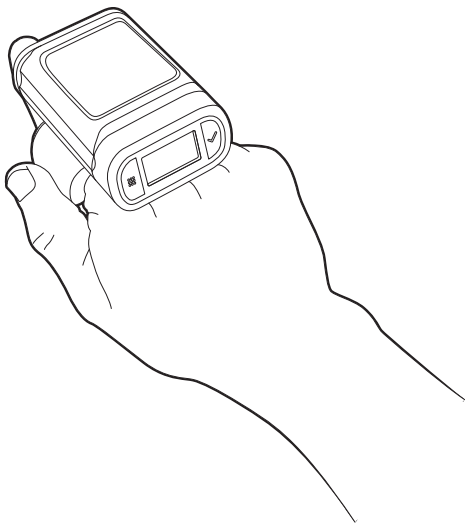
**Preliminary**  
**Draft 3/13/18**

## Overview



**Note:** The battery must be fully charged before the first use. An MB4-BAT-SCN02 or an MB4-SCN02 Charging Station must be purchased separately.

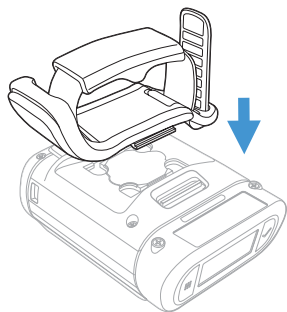
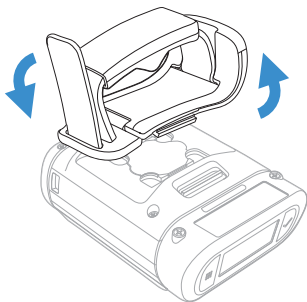
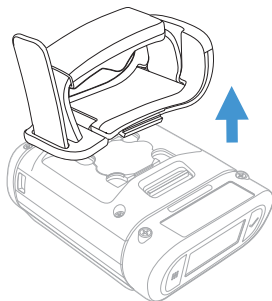
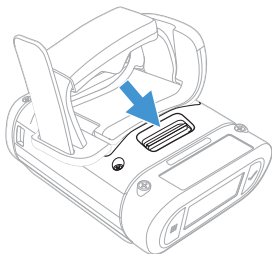
## Attach the Scanner to Your Hand



1. Slide your fingers into the loosened strap.
2. Pull the strap to secure to your fingers.

## Right or Left Handed Operation

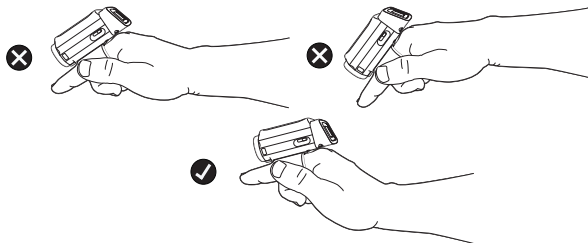
To release the finger trigger, turn over the scanner. Slide the latch toward the user window to release the finger trigger. Turn the finger strap around and snap it into place to change the operation to the correct hand.



## Power Up the Scanner

Press the trigger for 10 seconds to power up the scanner. The battery, WiFi, and Bluetooth status appears in the window.

## Wrist Position When Scanning

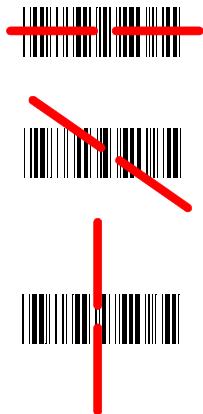


**Warning: Do not stare directly into the laser beam.**

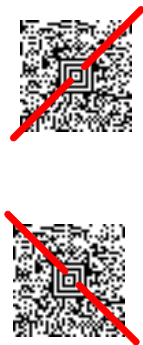
## How to Scan a Bar Code

The 8680i scanner has a view finder that projects a bright aimer line. This aimer line should be centered over the bar code, but it can be positioned in any direction for a good read.

## Linear bar codes



## 2D Matrix symbols



The aimer line is smaller when the scanner is closer to the code and larger when it is farther from the code. Symbologies with smaller bars or elements (mil size) should be read closer to the unit. Symbologies with larger bars or elements (mil size) should be read farther from the unit. To read single or multiple symbols (on a page or on an object), hold the scanner at an appropriate distance from the target, press the trigger, and center the aimer line on the symbol. If the code being scanned is highly reflective (e.g., laminated), it may be necessary to tilt the code up  $15^\circ$  to  $18^\circ$  to prevent unwanted reflection.

## Connect the Scanner via Bluetooth

### Pair with a Bluetooth Device Using a HID Keyboard

The 8680i scanner can pair with host Bluetooth devices such as personal computers, laptops, and tablets. This is the default setting for an 8680i scanner. Follow the steps below to establish one-way communication with the host device.

1. Scan the appropriate Bluetooth HID Keyboard Connect bar code below.



\* Bluetooth HID Keyboard  
Connect



Bluetooth HID Japanese  
Keyboard Connect

2. Set your host device so it searches for other Bluetooth devices. (Refer to your host device's User's Guide for pairing instructions.)
3. Once your host device has located the scanner, select the 8680i scanner name from the list displayed.
4. Some host devices automatically pair with the scanner. If your host device automatically pairs with the scanner, it displays a successful pairing message and you do not need to continue to the next step.

- Some PDT hosts display a prompt for a PIN. Ignore this message.
- If your host device does not automatically pair with the scanner, a PIN is displayed. This PIN must be scanned within 60 seconds. Using the scanner, you must quickly scan **Bluetooth PIN Code** below, then scan the numeric bar code(s) for the PIN code from the chart below, then scan the **Save** bar code.



Bluetooth PIN Code



0



1



2



3



4



5





6



7



8



9



Save

The Bluetooth symbol appears in the scanner window when the scanner pairs with a host.

## Pair with an Android™ Device

The 8680i scanner can pair with Android devices.

1. Set your Android device so it searches for other Bluetooth devices. (Refer to your Android device's User's Guide for pairing instructions.)
2. Scan the **BT Connection - Android Device** bar code below.



**BT Connection - Android Device**

On the Android device, the 8680i scanner is shown as a keyboard. Click on it to pair. The Bluetooth symbol appears in the scanner window when the scanner pairs with a host.

## Disconnect from the Host

Once your scanner has been connected to a host, you must disconnect it in order to communicate with a different device. Scan the **Bluetooth HID Keyboard Disconnect** bar code to unlink the scanner from the currently linked host.



Bluetooth HID Keyboard Disconnect

## Tap and Pair

You can pair your Android™ phone with the scanner by touching the devices together.

1. Touch the Android phone to the scanner.
2. The phone recognizes the scanner and prompts you to pair.
3. Verify the pairing of the scanner in your phone's Bluetooth settings.

## Pair with a Bluetooth Serial Port - PCs/Laptops

The 8680i scanner can pair with a Bluetooth serial port on a PC or laptop. Scanning the **Non-Base BT Connection** bar code below unlinks your scanner and puts it into a discoverable state. Once the scanner searches for and connects with a Bluetooth

host, the scanner stores the connection to the host device address and switches virtual COM ports. This allows the scanner to automatically relink to the host if the connection is lost.

1. Scan the **Non-Base BT Connection** bar code below to unlink your scanner and put it in a discoverable state.



Non-Base BT Connection

2. Set your host device so it searches for other Bluetooth devices. (Refer to your host device's User's Guide for pairing instructions.)
3. Once your host device has located the scanner, select the 8680i scanner name from the list displayed.
4. If a PIN is requested, enter **1234** (the default).

The Bluetooth symbol appears in the scanner window when the scanner pairs with a host. The connection to the host device address is stored in the scanner and virtual COM ports are switched. This allows the scanner to automatically relink to the host if the connection is lost.

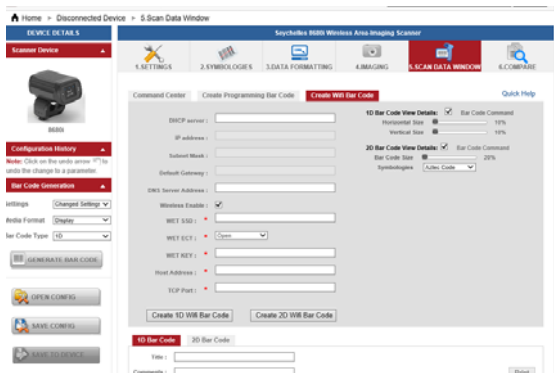
Once the scanner battery is charged and you have paired it to a host device, you may begin scanning bar codes.

## Connect the Scanner via WiFi

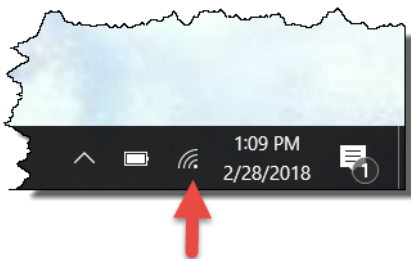
**Note:** *WiFi capability is only supported by 8680i scanners that are licensed for WiFi.*

The 8680i scanner can be used with WiFi networks using EZConfig Cloud for Scanning.

1. See [Install EZConfig Cloud for Scanning](#) on page 178 to install the EZConfig software.
2. Use your interface cable to connect the 8680i scanner to your PC and open EZConfig.
3. Select the **Scan Data Window** tab, then the **Create WiFi Bar Code** tab.



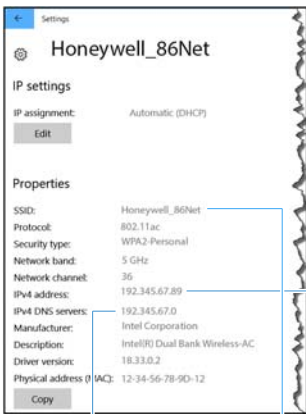
4. Click on the WiFi access logo on your PC.



5. When your WiFi list appears, select the network to which you want to connect the scanner and click on **Properties**.



6. Use the information shown for the **IPv4 address**, the **IPv4 DNS servers**, and the **network name** to fill in the EConfig screen.



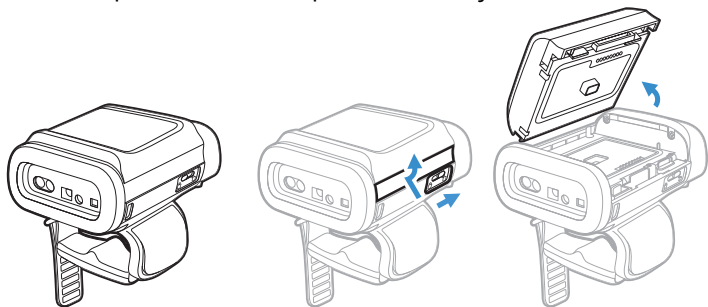
**Note:** The TCP Port is always **3390**.

- Click on either **Create 1D Wifi Bar Code** or **Create 1D Wifi Bar Code**.
- Print the bar code and scan it with the scanner to connect to the WiFi network.

## Replace the Battery

**Note:** *The battery should be replaced in an environment free from excessive dust or particulate to avoid an internal buildup of dust in the unit.*

If the LED on the scanner flashes red, it indicates the battery is low. To replace the battery, slide the battery latch to the unlocked position and lift up on the battery.



Replace the battery by snapping it in to the scanner. Slide the battery latch to the locked position.

## Support

To search our knowledge base for a solution or to log into the Technical Support portal and report a problem, go to [www.hsmcontactsupport.com](http://www.hsmcontactsupport.com).

## User Documentation

For the user guide and other documentation, go to [www.honeywellaidc.com](http://www.honeywellaidc.com).

## Limited Warranty

For warranty information, go to [www.honeywellaidc.com](http://www.honeywellaidc.com) and click **Get Resources > Product Warranty**.

## Patents

For patent information, see [www.hsmpats.com](http://www.hsmpats.com).

## Disclaimer

Honeywell International Inc. (“HII”) reserves the right to make changes in specifications and other information contained in this document without prior notice, and the reader should in all cases consult HII to determine whether any such changes have been made. The information in this publication does not represent a commitment on the part of HII.

HII shall not be liable for technical or editorial errors or omissions contained herein; nor for incidental or consequential damages resulting from the furnishing, performance, or use of



this material. HII disclaims all responsibility for the selection and use of software and/or hardware to achieve intended results.

This document contains proprietary information that is protected by copyright. All rights are reserved. No part of this document may be photocopied, reproduced, or translated into another language without the prior written consent of HII.

Copyright © 2018 Honeywell International Inc. All rights reserved.

Agency Model: 8680i

Table with 8 columns for product documentation availability in various languages: English, French, Italian, Spanish, German, Chinese, Arabic, and Portuguese. Each column includes the language name and the website URL (www.honeywellaidc.com).

FCC Part 15 Subpart B Class B
This device complies with part 15 of the FCC Rules. Operation is subject to the following two conditions:
1. This device may not cause harmful interference.
2. This device must accept any interference received, including interference that may cause undesired operation.

Table with 8 columns for safety warnings in various languages: English, French, Italian, Spanish, German, Chinese, Arabic, and Portuguese. Each column contains specific safety instructions for that language.

Para su uso en México, la operación de este equipo está sujeta a las siguientes dos condiciones:
1. Es posible que este equipo o dispositivo no cause interferencia perjudicial.
2. Este equipo o dispositivo debe aceptar cualquier interferencia, incluyendo la que pueda causar su operación no deseada.

Canadian Compliance
This Class B digital apparatus complies with Canadian RSS-247. Operation is subject to the following conditions:
1. This device may not cause harmful interference.
2. This device must accept any interference received, including interference that may cause undesired operation.

Table with 8 columns for Canadian and European compliance information in various languages: English, French, Italian, Spanish, German, Chinese, Arabic, and Portuguese. Each column contains specific regulatory requirements.

RF Exposure
The equipment complies with FCC RF exposure limits set forth for an uncontrolled environment. The equipment must not be co-located or operating in conjunction with any other antenna or transmitter.

Table with 8 columns for CE marking and FCC RF exposure compliance in various languages: English, French, Italian, Spanish, German, Chinese, Arabic, and Portuguese. Each column contains the CE mark and detailed compliance text.

Table with 8 columns for safety warnings in various languages: English, French, Italian, Spanish, German, Chinese, Arabic, and Portuguese. Each column contains specific safety warnings and symbols.

Table with 8 columns for safety and certification information in various languages: English, French, Italian, Spanish, German, Chinese, Arabic, and Portuguese. Each column contains specific safety and certification details.

