



Trigger (press and hold to read)



Status: Red: read failed
Green: read succeeded
Blue: cordless link up
Blinking red: low battery



Cable release (corded unit)



Charge: Steady green: fully charged
Blinking green: charging



Status: Steady red: connected to power
Blinking red: data transfer



Data (RS-232, USB, PS/2 Keyboard)

Power

1 Install Software

1. Insert CD-ROM and install software (follow prompts).
 - Run *setup.exe* if installer does not start automatically.
 - You must have Administrator privileges to install.
 - .NET Framework is installed if required.
2. When prompted, click **Continue Anyway**.



1



2

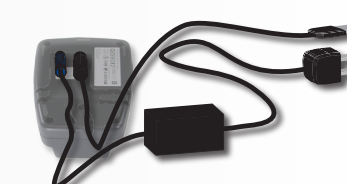
2 Connect Device

1. Connect base or device to PC using USB or Serial cable (PS/2 keyboard cable is not supported by setup tool.)
2. Connect base or device to power supply.



6300

USB: 42206416-01
RS-232: 42206139-04



6320

USB: 42206161-01
RS-232: 42203758-035

3 Place in Base (Cordless Only)

Inserting device in base establishes Bluetooth® link and charges battery.



6320

4 Scan Connection Code

Scan **USB Serial** or **RS-232 Serial** configuration code from the back of this document.



5 Load USB Driver (USB Only)

- Allow the Windows **Found New Hardware Wizard** to run.
1. Select Automatic driver installation.
 2. When prompted during driver load, click **Continue Anyway**.



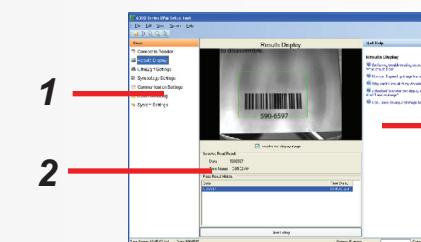
1



2

6 Start Setup Tool

- Use setup tool to configure reader (shortcut on desktop)
1. Common tasks
 2. Controls and information
 3. Question and Answer help



1

2

3



	6300 Corded	6320 Cordless
Weight	270g (9.5 oz)	330g (11.6 oz) Base: 250g (8.8 oz)
Operating Temperature	-10°C — 50°C (14°F — 122°F)	0°C — 50°C (32°F — 122°F)
Storage Temperature	-40°C — 70°C (-40°F — 158°F)	-40°C — 60°C (-40°F — 140°F)
Charging Temperature		5°C — 40°C (41°F — 104°F)
Maximum Humidity	95% (non-condensing)	
Environmental	IP54	IP54 Base: IP41
Drop (Impact)	50 drops from 2m (6.5') to concrete	25 drops from 2m (6.5') to concrete
Codes	Data Matrix™ (ECC 0, 50, 80, 100, 140, and 200) QR Code UPC/EAN/JAN Interleaved 2 of 5 Code 39, Code 128, and Code 93	
Power Consumption	1000 mA @ 5 VDC	Base: 800 mA @ 9 VDC
Battery Life at 25°C (77°F)		8h (normal use)

Connection



RS-232 Serial



USB Serial

PS/2 Keyboard Wedge



USB Keyboard



Setups



Enable Setup 1 only



Enable Setup 2 only

Enable Setup 3 only



Enable Setup 4 only



Keyboard



US English



French

German



See **Configuration Codes** in setup tool for more languages.

Commands



Soft reset (save settings)



Hard reset (discard settings)

Unlink base station



Notes



Product support: http://www.handheld.com/Site.aspx/na/en/services_support/



CAUTION: RISK OF EXPLOSION IF BATTERY IS REPLACED BY AN INCORRECT TYPE. The battery should be disposed of by a qualified recycler or hazardous materials handler. Do not incinerate the battery or dispose of the battery with general waste materials.

NOTE: Any modifications to this device not expressly approved by HANDHELD PRODUCTS, INC. may void your authority to operate it.

Copyright © 2006 Hand Held Products, Inc. All Rights Reserved. This document may not be copied in whole or in part, nor transferred to any other media or language, without the written permission of Hand Held Products, Inc. The hardware and portions of the software described in this document may be covered by one or more of the U.S. patents.

6300-20-QS Rev (A)



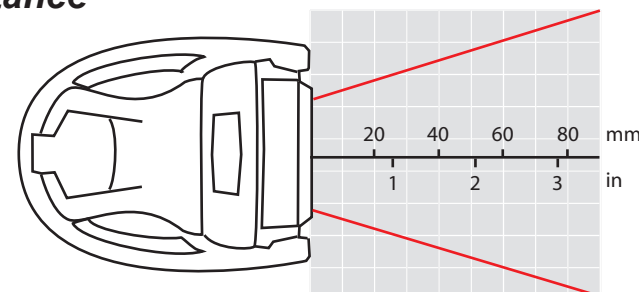
6300 Series DPM



6300 Corded Imager

6320 Cordless Imager

Reading Distance



1D Codes

13 mil ←→ 0 - 62mm (0 - 2.4 in)

2D Codes

5 mil ←→ 0 - 35 mm (0 - 1.4 in)

10 mil ←→ 0 - 55 mm (0 - 2.1 in)

20 mil ←→ 0 - 85 mm (0 - 3.3 in)

Quick Start Guide