

Enterprise Hybrid Device (EHD)

EDA50-111 Quick Start Guide
EDA50-011

EDA50-SC-QS Rev B
22/10

Open the Package

Please check if the following items included in the package:

- ScanPal™ Enterprise Hybrid Device ;
- Main battery (3.8V, lithium ion battery);
- 10-watt power adapter;
- Replaceable adapter plug;
- USB charging cable;
- Quick Start Guide

Remarks:

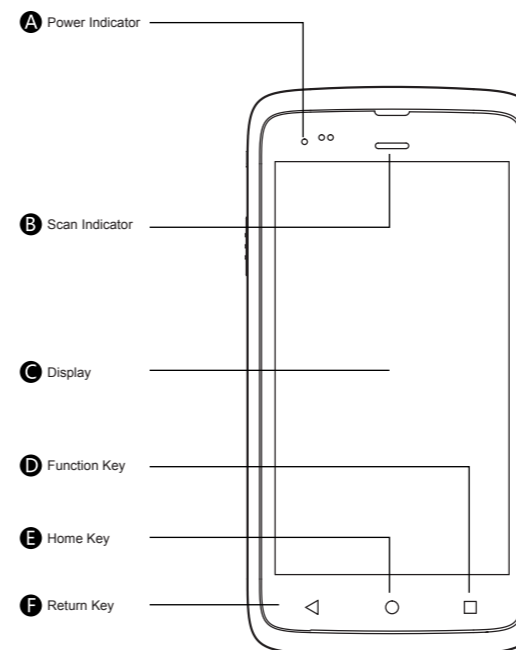
If you ordered accessories for the terminal, please make sure they are also included in the package; be sure to keep the original packages for ScanPal™ EDA50 to be returned for repairing when necessary.

Note:

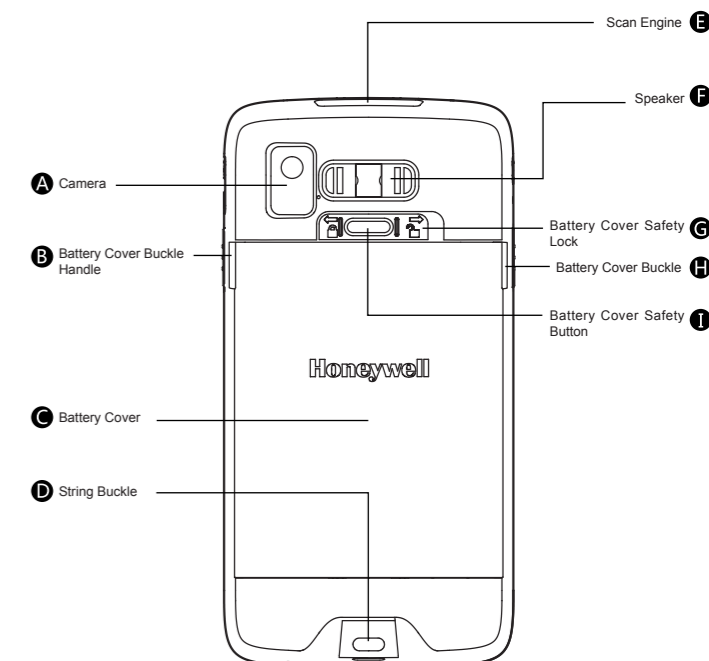
End users should not arbitrarily replace the operating system with other operating systems. To update operating system installed on your device, you need to get license from the OS vendors.

EDA50-111/EDA50-011 belongs to ScanPal™ Series

Front Panel

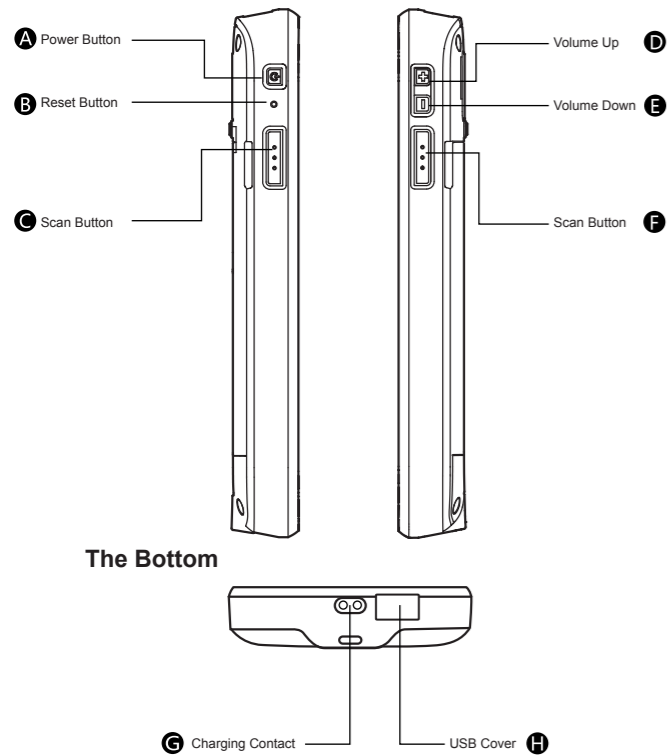


Rear Panel



Left Side View

Right Side View



Install the Main Battery

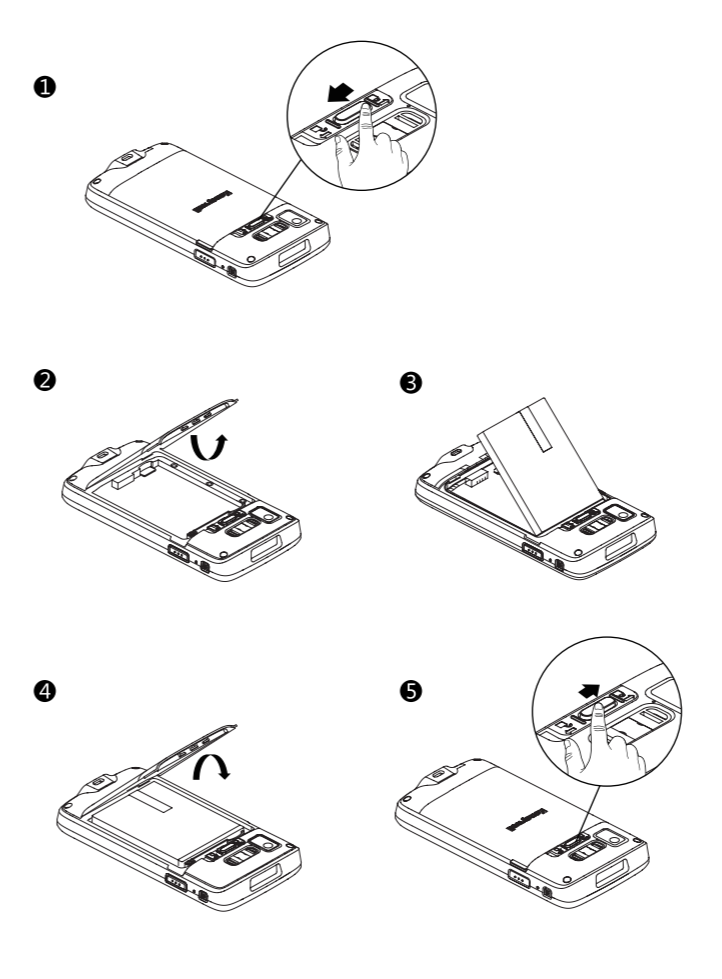
Replace the battery with wrong models may cause explosion. Please make sure to use the battery in accordance with local regulations. Please recycle the battery when possible. Do not dispose it as household waste. Please ensure all kits are dry when connect the mobile device or battery to external devices. Damages caused by connecting wet kits are not covered by the warranty.

ScanPal™ EDA50 comes with a battery in a separate package. Please follow the steps below to install the battery.

1. Press down the battery cover safety button to move the battery cover safety lock to the unlock position at right;
2. Open the battery cover with the battery cover buckle handle ;
3. Insert the battery (Insert the non-connector side first, then press the battery down to establish connection between the battery and the phone)
4. Press down the battery cover (Insert the non-connector side first, then press the battery cover down)
5. Press down the battery cover safety button to move the battery cover safety lock to the lock position at left

Remarks:

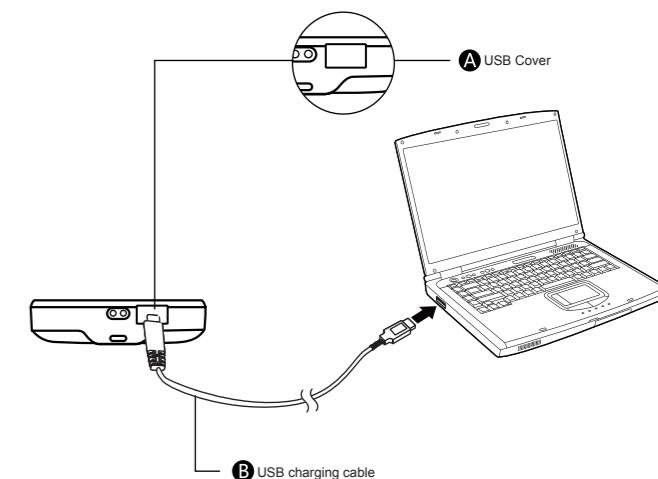
Refer to the illustrated installation steps on the following page.



Charging / Sync

Synchronous Communication

Open the USB cover at the bottom of ScanPal™ EDA50
Connect ScanPal™ EDA50 to the computer with USB charging cable



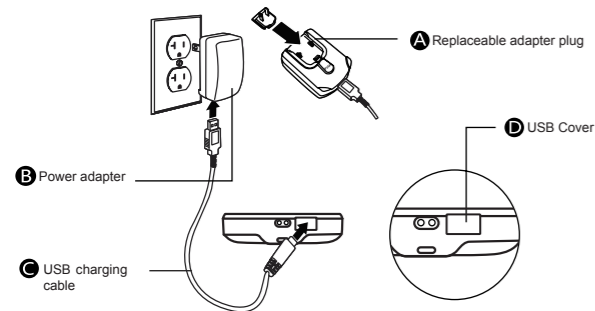
Charging / Sync

Charging

1. Open the USB cover at the bottom of ScanPal™ EDA50;
2. Connect ScanPal™ EDA50 to the power adapter with USB charging cable;
3. Make sure the replaceable adapter plug plugged into the power adapter;
4. Connect the power adapter to the wall plug and start charging for ScanPal™ EDA50.

Get ScanPal™ EDA50 charged for at least 4 hours before using it, subject to your battery models.

Using the terminal while charging will significantly extend the time required for fully charged.



Remarks:

It's recommended to use Honeywell's peripherals, batteries, USB charging cables and power adapters.

Damages caused by using non-Honeywell peripherals, batteries, USB charging cables or power adapters are not covered by the warranty.

Warnings:

Please make sure all kits are dry when use the terminal and battery with other accessories.

Damages caused by using wet kits may not be covered by the warranty.

Suspend / Wake Up the Terminal

Suspend / Wake Up the Terminal

Press the power button and then release (less than 2 seconds)

To wake up the device from sleep mode, press the power button and then release (less than 2 seconds)

Reboot

When something is wrong with the OS, press the reset button and then release to restart ScanPal™ EDA50

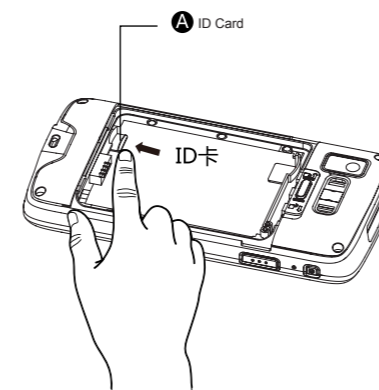
ScanPal™ EDA50 Power Indicator

The status of power indicators in non-charging and charging process are illustrated as below:

Non- charging process	
Off	Battery power is normal
Flashing orange	Battery power is low
Charging process	
Constant green	Charging complete
Flashing green	During charging process, and the charging is about to be completed
Orange	During charging process, and the battery power is still low
Flashing red	Battery is abnormal

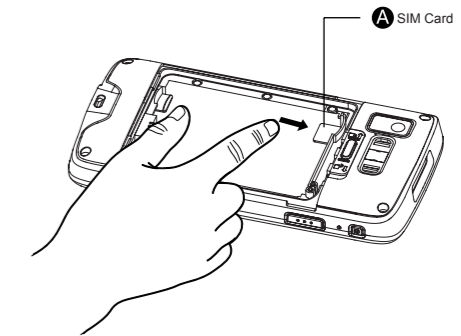
Install memory card

1. Power off;
2. Press down the battery cover safety button to move the lock to the unlock position at right;
3. Open the battery cover with the battery cover buckle handle ;
4. Pull out the battery (First open the battery connector side, then pull out the battery)
5. Insert the MicroSD card to SD card slot until it clicks;
6. Insert the battery (Insert the non-connector side first, then press the battery down to establish connection between the battery and the phone);
7. Press down the battery cover (Insert the non-connector side first, then press the battery cover down);
8. Press down the battery cover safety button to move the battery cover safety lock to the lock position at left;
9. Power on



Install SIM Card

1. Power off;
2. Press down the battery cover safety button to move the lock to the unlock position at right;
3. Open the battery cover with the battery cover buckle handle ;
4. Pull out the battery (First open the battery connector side, then pull out the battery)
5. Insert the SIM card to SIM card slot until it clicks;
6. Insert the battery (Insert the non-connector side first, then press the battery down to establish connection between the battery and the phone);
7. Press down the battery cover (Insert the non-connector side first, then press the battery cover down);
8. Press down the battery cover safety button to move the battery cover safety lock to the lock position at left;
9. Power on



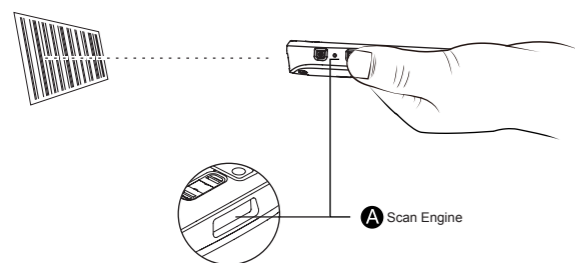
Note: only EDA50-111 delivers this feature

Use Scan Engine

Align the aiming beam with the barcodes, and adjust the angle between the beam and the barcodes to get the best results.

The recommended range from the terminal to the barcodes is 4" to 10" (10cm to 25cm)

1. Click the demo application on the interface, and then select Scan demo program;
2. Click Scan on the screen or press the Scan Button;
3. Align ScanPal™ EDA50 with the barcodes;
4. Adjust the aiming beam: in order to obtain the best performance, avoid scanning in a slight angle and slowly move the beam on the barcodes by scanning the reflection of the barcodes;
5. The terminal will beep when the barcodes are successfully decoded, which means the information included in the barcode has been obtained by the terminal

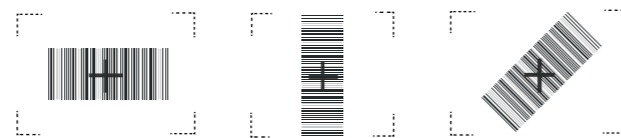


Aiming Beam

The aiming beam gets narrower when the terminal gets closer to the barcodes, while it gets wider when the terminal gets farther from the barcodes.

The smaller the barcodes, the closer the aiming beams should get to the barcodes
The bigger the barcodes, the father the aiming beams should get to the barcodes

Beam positions when scan 2D images



Technical Support

For information about technical support, after-sales service and maintenance, please visit www.honeywellaidc.com.

User Documents

For the local version of this article, please visit www.honeywellaidc.com.

Patents

For information on patents, please refer to www.honeywellaidc.com/patents.

Warranty

Please log into www.honeywellaidc.com/warranty_information for warranty information on your product.

Disclaimer

Honeywell International Inc. reserves the rights to modify the specifications and other information mentioned above without prior notification.

Readers should consult Honeywell International Inc. to make sure if any changes made any time they read this article.

The information in this article does not represent any commitments of Honeywell International Inc.

Honeywell International Inc. is not responsible for direct or indirect loss caused by any technical or editing errors or omissions contained in this article.

The proprietary information contained in this article is protected by copyright.

All rights reserved.

Without prior written consent from Honeywell International Inc., any form of photocopy, copy or translation into other languages for any part of this article is not allowed.

All Rights Reserved by Honeywell International Inc.
Website: www.honeywellaidc.com

Honeywell