



User Manual

OPTIMUS PDA SP5700 SERIES Manual



Revised Version

October 2006

InnoTeletek, Inc



FCC Statement

This device complies with part 15 of the FCC Rules. Operation is subject to the following two conditions:

- (1) This device may not cause harmful interference, and
- (2) This device must accept any interference received, including interference that may cause undesired operation.

Caution: Any changes or modifications to the equipment not expressly approved by the party responsible for compliance could void user's authority to operate the equipment.

FCC Compliance statement

This equipment has been tested and found to comply with the limits for a Class B digital device, pursuant to part 15 of the FCC Rules. These limits are designed to provide reasonable protection against harmful interference in a residential installation. This equipment generates, uses and can radiate radio frequency energy and, if not installed and used in accordance with the instructions, may cause harmful interference to radio communications. However, there is no guarantee that interference will not occur in a particular installation. If this equipment does cause harmful interference to radio or television reception, which can be determined by turning the equipment off and on, the user is encouraged to try to correct the interference by one or more of the following measures:

- Reorient or relocate the receiving antenna.
- Increase the separation between the equipment and receiver.
- Connect the equipment into an outlet on a circuit different from that to which the receiver is connected.
- Consult the dealer or an experienced radio/TV technician for help.



FCC RF EXPOSURE INFORMATION

WARNING! Read this information before using your phone

In August 1996 the Federal Communications Commission (FCC) of the United States with its action in Report and Order FCC 96-326 adopted an updated safety standard for human exposure to radio frequency (RF) electromagnetic energy emitted by FCC regulated transmitters. Those guidelines are consistent with the safety standard previously set by both U.S. and international standards bodies. The design of this phone complies with the FCC guidelines and these international standards.



Use only the supplied or an approved antenna. Unauthorized antennas, modifications, or attachments could impair call quality, damage the phone, or result in violation of FCC regulations.

Do not use the phone with a damaged antenna. If a damaged antenna comes into contact with the skin, a minor burn may result. Please contact your local dealer for replacement antenna.

Body-worn Operation

This device was tested for typical body-worn operations with the back of the phone kept 0.59 inches (1.5 cm) from the body. To comply with FCC RF exposure requirements, a minimum separation distance of 0.59 inches (1.5 cm) must be maintained between the user's body and the back of the phone, including the antenna, whether extended or retracted. Third-party belt-clips, holsters and similar accessories should not contain metallic components and must provide 0.59 inch (1.5 cm) separation distance between the user's body and the back of the phone. Body-worn accessories that do not meet these requirements may not comply with FCC RF exposure limits and should be avoided.

For more information about RF exposure, please visit the FCC website at www.fcc.gov



Contents

Notice	6
1. MC5000,OPTIMUS PDA SP5700 SERIES – General view	9
2. Getting Started	10
2.1 Charging the Battery.....	10
2.2 Turning on/off.....	12
3. Settings	15
3.1 Sleep Mode.....	15
3.2 LCD Display.....	15
3.3 Volume & Sounds.....	15
3.4 Date/Time.....	15
4. PDA Management	16
4.1 Using the Stylus.....	16
4.2 Calibrating the Screen.....	16
4.3 Resetting.....	17
4.3.1 Performing a Soft Reset.....	17
4.3.2 Performing a Hard Reset.....	18
5. Applications	19
5.1 Creating Documents	19
5.2 Barcode Scanning	25
5.2.1 Laser Scan Engine.....	25
5.2.2 Image Scan Engine.....	27
5.3 Connecting with a Desktop	29
5.3.1 Installing ActiveSync on a Desktop.....	25
5.3.2 Setting up a partnership.....	25
5.4 Wireless LAN	33
5.5 GSM/GPRS	36
5.5.1 Initializing the Modem.....	36
5.5.2 Checking Subscriber Identity Module (SIM).....	38
5.5.3 Menu.....	39
5.5.4 Voice call.....	42
5.5.5 Short Message Service.....	43
5.5.6 Phonebook.....	46



User Manual

5.5.7 History	48
5.5.8 Sound Settings	49
5.5.9 Setting a Wireless Network	50
5.5.10 How to Lock Menu	52
5.5.11 Connecting to GPRS Network.....	53
6. Troubleshooting	55
7. Specifications.....	57
7.1 Physical characteristics.....	57
7.2 Performance.....	57
8. Limited Warranty Statement.....	58
9. Customer Care Information.....	60

Pictures

Picture 1 Front and left side view	9
Picture 2 Positioning PDA in the cradle.....	10
Picture 3 Charging process	11
Picture 4 Battery cover.....	12
Picture 5 Power button	13
Picture 6 Desktop background	13
Picture 7 Power setting from the Control Panel.....	14
Picture 8 Calibration screen.....	16
Picture 9 Calibration settings completion.....	17
Picture 10 Power and Enter buttons	17
Picture 11 Reset button location.....	18
Picture 12 WordPad shortcut	20
Picture 13 New Document display.....	20
Picture 14 Drop-down menu arrow.....	21
Picture 15 Keyboard display.....	21
Picture 16 Character recognition Program.....	22
Picture 17 Screen boxes recognition.....	23
Picture 18 Full screen recognition modes.....	23
Picture 19 Split screen mode	24
Picture 20 Barcode scan application	25
Picture 21 Barcode scanning.....	25



User Manual

Picture 22 Scanning result26

Picture 23 Barcode selection list.....26

Picture 24 Opening barcode image scanning program27

Picture 25 Disabling image function28

Picture 26 ActiveSync 4.1 setup wizard29

Picture 27 Connection process30

Picture 28 Partnership set up window30

Picture 29 Synchronization options.....31

Picture 30 Setup completion.....31

Picture 31 Synchronization process.....32

Picture 32 Synchronization status32

Picture 33 Network and Dial-up Connections icon33

Picture 34 Initializing connection process.....33

Picture 35 IP address and server address assignment34

Picture 36 Network connection icon35

Picture 37 Connection status.....35

Picture 38 Running DDialer from the desktop.....36

Picture 39 Open DDialer display.....36

Picture 40 Signal strength37

Picture 41 Connection quality37

Picture 42 Operating mode37

Picture 43 Request for SIM card insertion38

Picture 44 Emergency calls available.....38

Picture 45 Request for PIN38

Picture 46 Entering PIN data38

Picture 47 Display after connecting to a network.....39

Picture 48 Phone setup options40

Picture 49 Sound setup.....40

Picture 50 Network setup.....40

Picture 51 SMS setup.....40

Picture 52 PIN edit40

Picture 53 Version info.....40

Picture 54 User Interface functions41

Picture 55 History record.....41

Picture 56 Phonebook41

Picture 57 Mailbox.....41



User Manual

Picture 58 Touch-screen keypad	42
Picture 59 Keyboard	42
Picture 60 Mailbox display	43
Picture 61 Mailbox and SMS windows	44
Picture 62 SMS encoding program selection	44
Picture 63 Editing text and addressing SMS	45
Picture 64 Adding a new contact	46
Picture 65 Phonebook content	46
Picture 66 Management of phonebook numbers	47
Picture 67 Tracking history records	48
Picture 68 Sound configurations	49
Picture 69 Network advanced settings	50
Picture 70 Connection to network using manual mode	51
Picture 71 Locking menu values	52
Picture 72 Settings on the Start Menu	53
Picture 73 Network Connections tab	53
Picture 74 GPRS icon	54
Picture 75 Dial-up connection window	54

Tables

Table 1 Solving problems	55/56
Table 2 Physical specifications	57
Table 3 Hardware specifications	57



Notice

1. Limited Warranty

InnoTeletek will repair the defective parts free of charge if the problem is due to materials or workmanship during the warranty period. The warranty period for this product is one year from the date of product purchase. Provided that the date of purchase is not clear, it is six months from the date of manufacture. The warranty period for the battery is six months from the date of product purchase. Provided that the date of purchase is not clear, it is three months from the date of manufacture.

However, InnoTeletek does not service free of charge in case of noted below even during the warranty period.

Any damages or defectives: (1) as a result of accident, misuse, abuse, or other external causes; (2) by the reason of flood, typhoon, fire, war or other Acts of God; (3) by the user's arbitrary modification or conversion; (4) by any other reasons beyond defects of materials or workmanship.

2. Certifications

This product has been approved by Ministry of Information and Communication.
EMC (EMI/EMS): MIC, FCC part 15 class B, EU EMC directive

3. Copyrights

This manual describes and explains the product on the basis of the time of present. InnoTeletek IS NOT LIABLE FOR ANY LOST PROFITS CAUSED BY UNEXPECTED RESULTS CONCERNED WITH OMISSIONS AND THE EDITING OF THIS MANUAL. THE MATERIAL IN THIS MANUAL IS SUBJECT TO CHANGE TO IMPROVE RELIABILITY, FUNCION, OR DESIGN WITHOUT NOTICE. The law protects all programs and the rights. Without the permission from InnoTeletek, no right to copy, quote or translate this manual in whole or in part is granted except as permitted under copyright law.

Other product names mentioned in this manual such as Microsoft ActiveSync®, Windows® and its logo are registered trademarks of their companies. InnoTeletek is permitted to use those Microsoft products by an affiliate of Microsoft, Microsoft Licensing, Inc.

All software furnished to the user is on a licensed basis, and it is not sold. InnoTeletek has the rights of all software, and it grants to the user a license to use the software. The rights of software are granted to the user under the agreement to comply with the terms on the license agreement. Such license should not be sublicensed, distributed or transferred to other persons by the user.

InnoTeletek License Agreement applies to all software provided by InnoTeletek. Microsoft programs are granted to use by its End User License Agreement (EULA).

The user shall not modify or merge any form of a licensed program with other programs, or use it in a network without prior consent of InnoTeletek.

No right to copy a licensed program in whole or in part is granted except as permitted under copyright law.



User Manual

InnoTeletek may terminate the contract in the breach of contract by the user.

4. Precautions

- 1) Use this product at a proper voltage. Otherwise, this product may be damaged or cause a fire.
- 2) Do not dismantle or modify this product arbitrarily. It may cause malfunction or damage, and the warranty does not apply to these cases.
- 3) Do not use this product in dusty and humid places. It may weaken the function or cause malfunction of the product.
- 4) When using the product, keep it away from magnetic fields or large loudspeakers. Otherwise, it may erase data stored in the terminal's memory or cause damage to the LCD.
- 5) Be careful not to expose your eyes to the laser beam while scanning. It is harmful for your eyes.
- 6) Optional CDMA embedded products have their own Electronic Serial Numbers (ESN) in the built-in CDMA Module. Do not copy or modify ESN illegally. Otherwise, a legal restraint will be taken.

5. Tips for MC5000,OPTIMUS PDA SP5700 SERIES trouble-free usage

- 1) MC5000,OPTIMUS PDA SP5700 SERIES is designed to operate between -20 ~ 60 . Therefore protect your terminal from temperature extremes. Do not leave it on the dashboard of a car on a hot day, and keep it away from heat sources. Otherwise, it may cause malfunction, or data stored in your terminal may be lost.
- 2) The PDA is durably made to withstand the 1.5m dropping test. The touch-sensitive screen of PDA is made of glass. Therefore, avoid dropping your terminal or expose screen display to strong impacts. Otherwise, it may be damaged.
- 3) Although MC5000,OPTIMUS PDA SP5700 SERIES is water resistant, do not expose it to rain or moisture for an extended period of time. Avoid using the terminal when it rains heavily. Wipe the water on the terminal with a soft cloth when it is moist before using. Otherwise, it may cause malfunction.
- 4) Do not scratch the screen. Use provided stylus pen only, which is intended for use with a touch-screen. Never use other pens, pencils or sharp objects for pointing on the screen. Clean the screen with a soft, wet cloth when it is covered by dust. Not removing it regularly may cause damages to the touch-screen.
- 5) Do not use your industrial PDA in the proximity of signal emitting electronic appliances. Radio waves of emitted by electronic devices may disturb correct functioning of MC5000,OPTIMUS PDA SP5700 SERIES . It is also recommended not store or use your terminal in an environment that is extremely dusty, damp or wet.



User Manual

6. Unpacking

Carefully remove protective materials from the PDA and the cradle, and store the shipping cartons for packing to ship after reparation or return. Verify that you have received all equipment as enlisted below.

The terminal box should contain:

- TERMINAL: 1
- LITHIUM-ION BATTERY: 1
- HANDSTRAP: 1*
- TERMINAL CASE: 1*
- STYLUS: 1*

The cradle box should contain (optional):

- ONE-SLOT CRADLE: 1
- USB SYNCH CABLE: 1
- ADAPTER: 1
- POWER CORD: 1

* In plastic bag

In case when there are damaged units or missed parts, call the local agent or distributor immediately. If the problem cannot be solved instantly, you should return the PDA to the local agent or distributor. However, InnoTeletek is not liable for any damages that occurred due to mishandling during transportation or when the shipping package is not used. For more details with this regard refer to the "Service Information" on page 35.



User Manual

1. MC5000,OPTIMUS PDA SP5700 SERIES – General

view



Picture 1 Front and left side view

1. Indicator LED (Charging & Operation)
2. Antenna (for Wi-Fi & GSM)
3. USB Host connector
4. Speaker
5. Scan Trigger
6. 4 Way Navigation Pad
7. Power Button
8. Send & End Buttons for WWAN
9. Numeric Key Pad
10. Keypad Backlight Button



User Manual

11. Function Key
12. Universal I/O connector

2. Getting Started

2.1 Charging the Battery

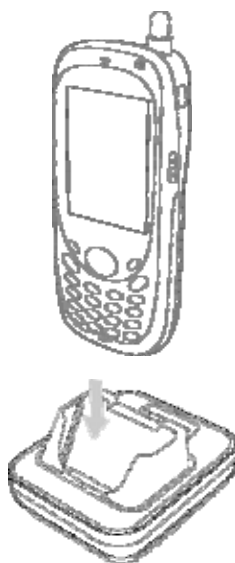
Before using the PDA for the first time, recharge the Li-ion Battery. When charging is completed indicating LED turns **GREEN**. It usually takes approximately 3 hours. Now, given this information place your MC5000,OPTIMUS PDA SP5700 SERIES into the cradle and charge it.

Note: *When you are going to charge the PDA for the first time, do not you remove the battery before it is fully charged as it may cause malfunction. To ensure the quickest recharge time, turn the PDA into a sleep mode.*

To charge the battery:

Connect the cradle to the power supply source.

Slide your PDA into the cradle until red LED lights up. To charge spare battery, insert the battery into the slot at the top of the cradle. The charger starts operating automatically, and completes charging in within 3 hours.

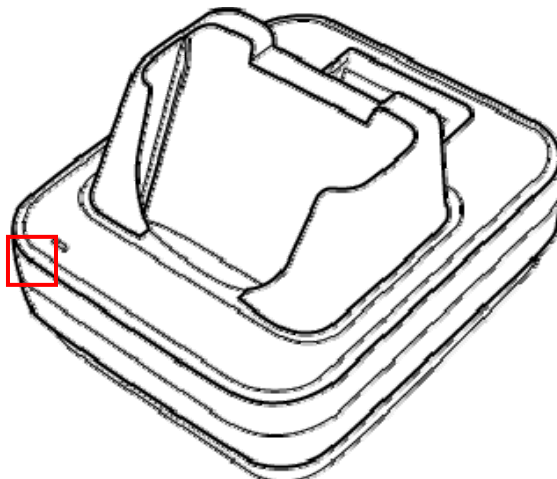


Picture 2 Positioning PDA in the cradle



User Manual

When LED turns **RED** it indicates that the battery is charging status. As the process is completed, LED changes into **GREEN**.



Picture 3 Charging process

Note: *MC5000, OPTIMUS PDA SP5700 SERIES is equipped with a memory backup battery. The backup battery allows storing data in memory when the main battery is removed or discharged. If the PDA remains without the main battery for more than 1 hour, the backup battery discharges. It is highly recommended to replace the main battery within 10 minutes or keep charging the battery when the PDA is inserted in the cradle. Otherwise your data may be lost.*

CAUTION

RISK OF EXPLOSION IF BATTERY IS REPLACED BY AN INCORRECT TYPE.

DISPOSE OF USED BATTERIES ACCORDING TO THE NATIONAL CODE OR RECYCLING PROGRAM

2.2 Turning on/off

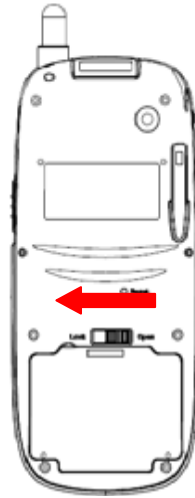
1) When you are replacing the batteries for the first time

Pull out the rubber latch from the cover's slot.

Slide the cover left.



User Manual



Picture 4 Battery cover

Insert the battery in the compartment in accordance with its correct positioning. Ensure that the top of the battery adhere to the place first, and then you can fix its bottom. To close the compartment, slide the cover on the right direction and lock the hook.

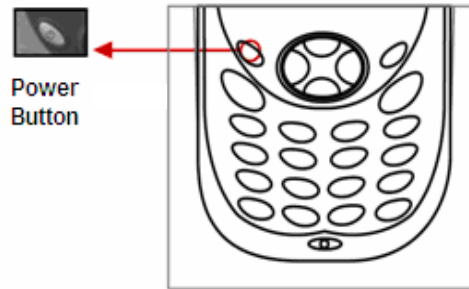


User Manual

2) How to use the power button to turn on your MC5000,OPTIMUS PDA SP5700 SERIES

Press the **Power** button to turn the PDA on.

- If you press and then hold the **Power** button for about 3 seconds, PDA switches into sleep mode and turns off.



Picture 5 Power button

When the booting process is finished, Windows® logo will be displayed on a desktop as illustrated below.



Picture 6 Desktop background

If the Power button does not activate your PDA, you should execute a hard reset. For



User Manual

details refer to the section “Performing a Hard Reset.”

3) Turning off your MC5000,OPTIMUS PDA SP5700 SERIES

Press and hold the **Power** button for 3 seconds or tap **Suspend** on the start menu.

- It is possible to set your terminal to auto-suspend status or to auto-turn off after specified period of time what will allow you to save the battery’s power.
- Power setting method: Tap **Start Settings Control Panel**. Double tap the **Power** button and select **Schemes** Tab.



Picture 7 Power setting from the control panel

It is recommended to remove the battery from the PDA when it is not in use for a long time.



3. Settings

3.1 Sleep Mode

- 1) To reduce energy consumption, push the **Power** button for 3 seconds or tap **Start Suspend**, and your terminal will switch into a sleep mode. Data stored in RAM remains unchanged when turning into sleep mode.
- 2) To wake up from sleep mode, press the **Power** button. When the system wakes up, the screen will display the same view displayed before sleep mode.

3.2 LCD Display

- 1) To save battery power it is recommended to change the backlight settings.
Tap **Start Settings Control Panel**, then Double tap **Display**.
- 2) Press **Backlight** tab and select required option.

3.3 Volume & Sounds

To change sounds and the volume tap **Start Settings Control Panel**, then double tap **Volume & Sounds** icon.

3.4 Date/Time

In order to adjust the date and time, select **Start Settings Control Panel**, then double tap on the **Date/Time** icon.



4. PDA Management

4.1 Using the Stylus

The stylus is useful for command selection and entering data. The stylus functions are similar a mouse connected to PC.

- 1) Tap: Touch the screen once with the stylus to open an item and select options.
- 2) Drag: Hold the stylus on the icon and drag it across the screen to selected area. Drag in a list to select multiple items.

Note: 1. If the surface of the display becomes dirty, clean it with a soft cloth before using the stylus pen.

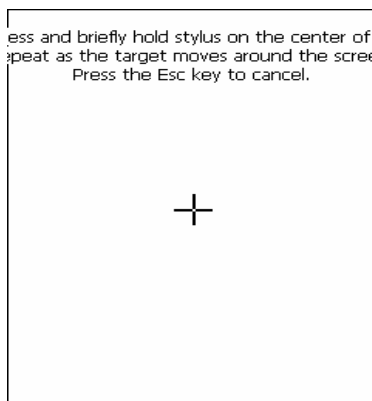
2. Take care not to scratch the screen. When working MC5000,OPTIMUS PDA SP5700 SERIES , use only the provided stylus that is intended for use with the PDA touch-screen. Never use a pen, pencil or other sharp pointers on the surface of the MC5000,OPTIMUS PDA SP5700 SERIES screen.

3. Do not let children to play with the stylus. Contact with the end edge may cause injury. Please keep the PDA away from children.

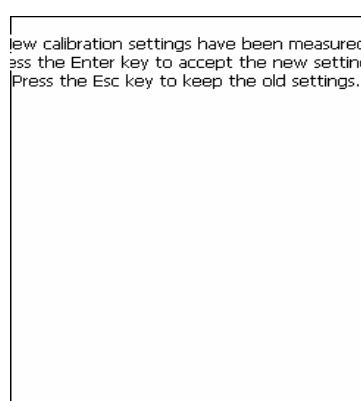
4.2 Calibrating the Screen

When you tap with the stylus and programs or functions are not activated correctly, you should calibrate the screen. Calibration allows aligning the cursor on the touch-screen. The method is as follows:

- 1) To calibrate your screen, select **Start Settings Control Panel**, next double tap the **Stylus** icon, then indicate **Calibration** tab **Recalibrate** button.
- 2) Take the stylus from its holder on the back of the terminal.
- 3) Tap the center of the cross mark that appears on the screen with stylus.



Picture 8 Calibration screen



Picture 9 Calibration settings completion



User Manual

4.3 Resetting

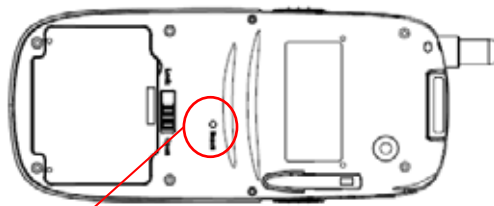
If the screen freezes or the terminal becomes inoperative, you may need to reset your PDA.

4.3.1 Performing a Soft Reset

Note: *Transfer all stored data into a computer otherwise files that are open during a soft reset may not be retrieved.*

To perform a hard reset, press **Reset Button** located on the right side above the Battery Cover.

Picture 10 Reset buttons



Press the **Reset Button** here by using your stylus

Note: *Soft reset restarts MC5000, OPTIMUS PDA SP5700 SERIES and saves all stored records.*

4.3.2 Performing a Hard Reset

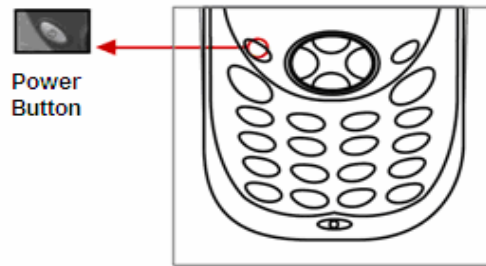
By executing hard reset formats, preferences, date/time, and other settings are restored to their factory default values.

To perform a soft reset, press: ton simultan

Picture 11 Power & Reset button



User Manual



Note: *Hard reset not only restarts your PDA, but also erases all stored records and entries in RAM. Therefore, perform a hard reset only in cases when a soft reset mode does not work.*

! BE CAREFUL WHEN YOU PERFORM A HARD RESET SEVERAL TIMES CONSECUTIVELY WITHIN SHORT PERIOD OF TIME, IT MAY CAUSE THE SCREEN TO BECOME BLANK ACCOMPANIED BY VERTICAL LINES DISPLAY ON IT.



5. Applications

5.1 Creating documents

You can create a new document on your PDA with Microsoft WordPad®¹, or work on an existing one by sending it from the PC to your MC5000,OPTIMUS PDA SP5700 SERIES . Data, files, and document uploads/downloads between PDA and computer are controlled by the Microsoft ActiveSync® software.

There are two ways to enter characters into the document using document-editing programs:

- Using the keyboard
- Using the handwriting recognition program.

Detailed method for making documents with each of the above mentioned methods are as follows:

Microsoft WordPad® is a registered trademark of Microsoft.



User Manual

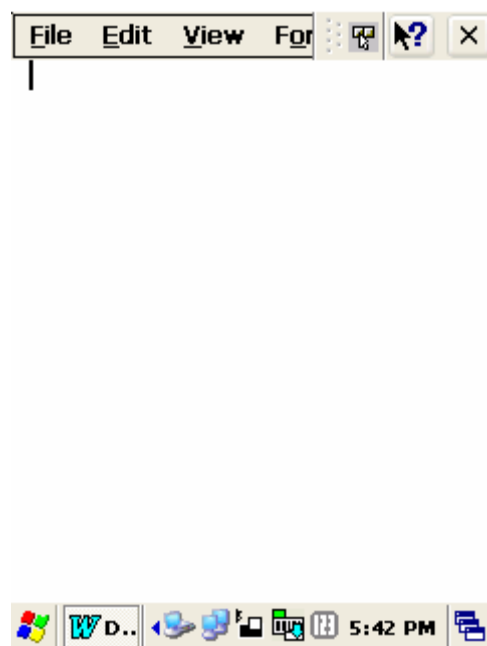
1) Using the keyboard

Tapping on the WordPad icon from the **Start** menu or on the shortcut from the screen, runs **Microsoft WordPad®**, the document-editing program.

The below illustrated pictures demonstrate how to use the screen shortcut for activating WordPad. By double tapping on the Microsoft WordPad® icon (Picture 12), the display of opened Microsoft WordPad® processor will appear (Picture 13).




Picture 12 WordPad shortcut

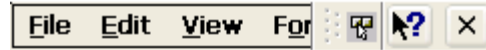


Picture 13 New Document display



User Manual

Tap on  at the bottom of the screen as it is shown on the Picture 14. Next the drop-down menu will appear. Then select **Keyboard** (Picture 15).



Picture 14 Keyboard Icon

Picture 15 Keyboard Panel

When the keyboard display appears on the lower part of the screen, tap the buttons with characters to enter text into your document.



Note: You can also use the PDA's keypad to input characters. The keypad is a numeric so that also recognizes the numbers (0-9). The keypad is color-coded to indicate particular actions that are taken when the **Shift** key is being pressed.

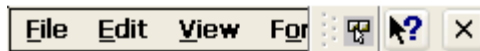


User Manual

2) Using the character recognition program

Open Microsoft WordPad®, the document-editing program.


Tap on the  icon located at the bottom of the screen. Then options will appear.
 Select 

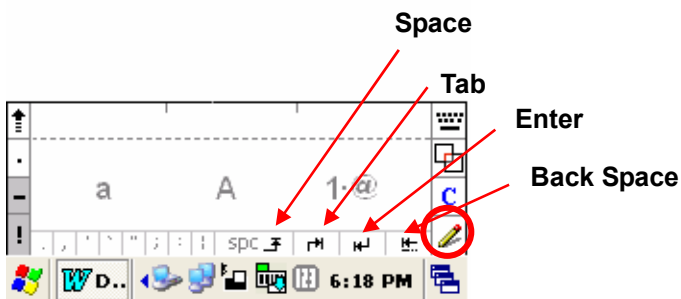
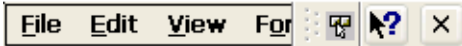


Picture 16 Character recognition program selection






User Manual

Press  shaped button one more time. A window with the <a, A, 1·@> options appears on the lower part of the screen. Upper case, lower case, and numbers/symbols should be written in a certain fields marked by “a”, “A” and “1·@” – symbols that reflect three different character recognition modes.



Picture 17 Screen boxes recognition

-  Mode Conversion Input
-  Ctrl: A shortcut key applied with “**Ctrl** + character” e.g. writing **S** in the **Ctrl** field calls the save file dialogue box in the same way as in case of pressing simultaneously **Ctrl+S** for the keyboard.

To display full screen mode for writing, tap on the  - shaped button located on the right side of the application (circled area on the Picture 17). Then, if you write letters using your stylus, they will be converted into a text on the top of the screen.



User Manual



Picture 18 Full screen recognition mode

Picture 19 Split screen mode

In order to split window, tap the  shaped button on the bottom menu bar at the full screen mode. Now, upper part of the display located above the red arrows (circled in blue on the picture below) is for capital letters input space and the lower part of the screen is designated for small letters input.



User Manual

5.2 Barcode Scanning

5.2.1 Laser Scan Engine

- 1) Open the barcode scanning program from the shortcut on the screen.



Picture 20 Barcode scan Test

- 2) Place the scanner in alignment to the direction of a barcode and press one of trigger buttons. Let **RED** laser beam line cover the barcode.

! DO NOT KEEP THE SCAN BUTTON PRESSED TOO LONG; IT MAY RESULT IN SCAN ENGINE FAILURE OR MALFUNCTIONING.

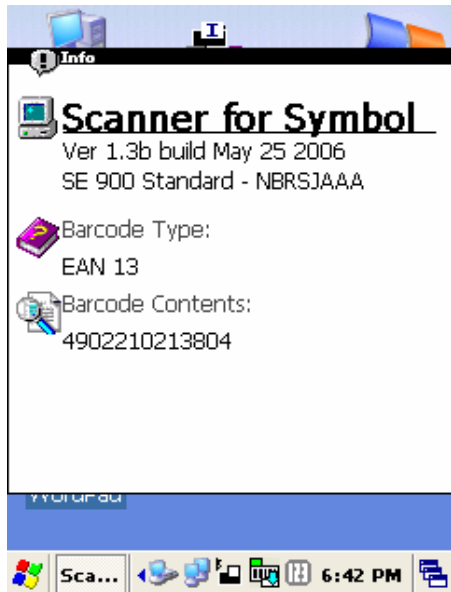


Picture 21 Barcode scanning

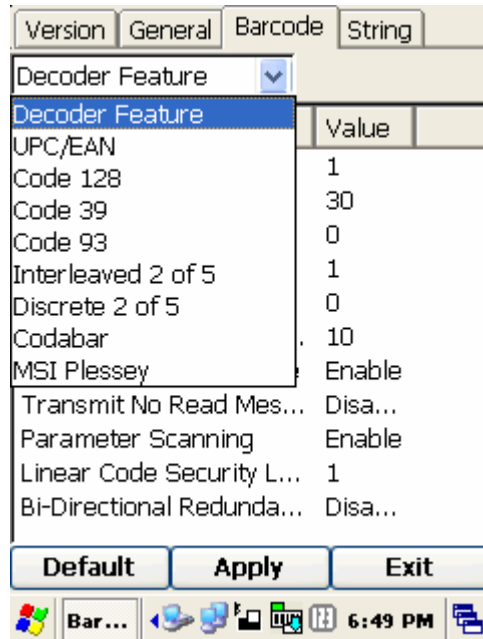


User Manual

3) A short beep sound indicates successful accomplishment of decoding and the result will be displayed in the scan window.



Picture 22 Scanning result



Picture 23 Barcode selection list

4) In order to accelerate decoding process, you can disable imaging. Click Options button from the menu bar and unmark the **Enable Image** command.

5) Readable codes

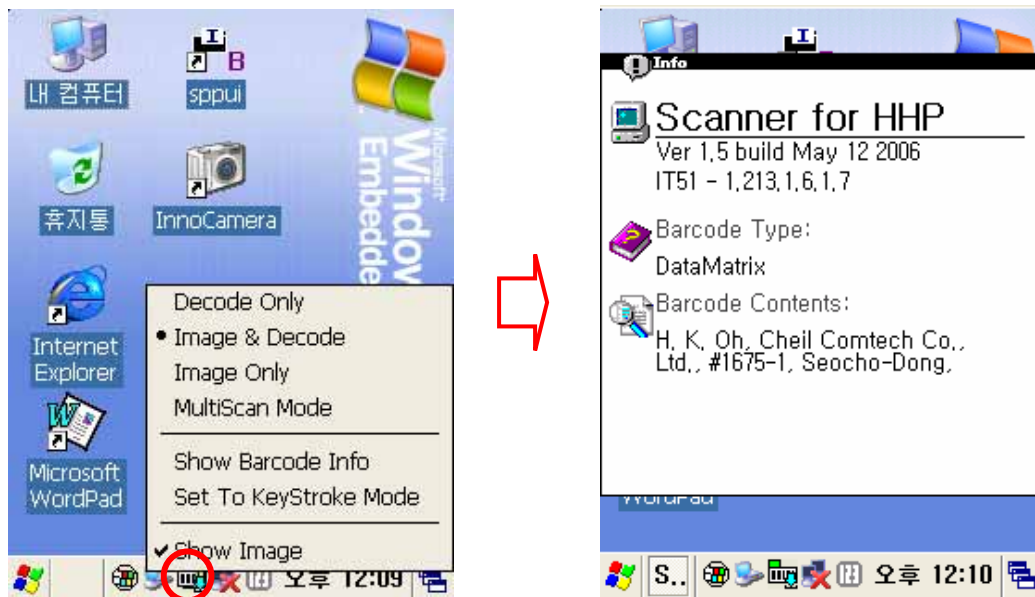
- **Linear Symbologies:** Codabar, Code 11, Code 128, Code 39, Code 93, EAN-8, EAN-13, Interleaved 2 of 5, ISBT 128, MSI, Reduced Space Symbology, Straight 2 of 5 IATA, UPC-A, UPC-E, UPC-E1



User Manual

5.2.2 Image Scan Engine

- 1) Run the barcode image scanning program by tapping a shortcut on the background screen.



Picture 24 Opening barcode image scan program

- 2) Place the PDA's scanner in aligned with a barcode position and press one of trigger buttons. Let **Green** laser beam line cover the barcode.

! DO NOT KEEP THE SCAN BUTTON PRESSED TOO LONG; IT MAY RESULT IN SCAN FAILURE OR DEVICE MALFUNCTION.

- 3) A short beep will indicate successful decoding. And the result will be displayed appears in the scan window.
- 4) In order to accelerate decoding process, disable imaging by using the Option menu. Using stylus, tap on the Option tab from and then unmark the **Enable Image** on the drop down list.



User Manual



Picture 25 Disabling image function

5) Readable codes

- **Linear Symbologies:** Codabar, Code 11, Code 128, Code 39, Code 93, EAN-8, EAN-13, Interleaved 2 of 5, ISBT 128, MSI, Reduced Space Symbology, Straight 2 of 5 IATA, UPC-A, UPC-E, UPC-E1
- **Stacked Symbologies:** Codablock F, Code 49, EAN-UCC Composite, Micro PDF417, PDF 417, TCIF Linked Code 39 (TLC39)
- **2D Matrix Symbologies:** Aztec Code, Aztec Mesa, Data Matrix, MaxiCode, QR Code
- **Postal Symbologies:** Australian Post, British Post, Canadian Post, Japanese Post, KIX (Netherlands) Post, Planet Code, Postnet,
- **OCR Fonts:** OCR US Money Font



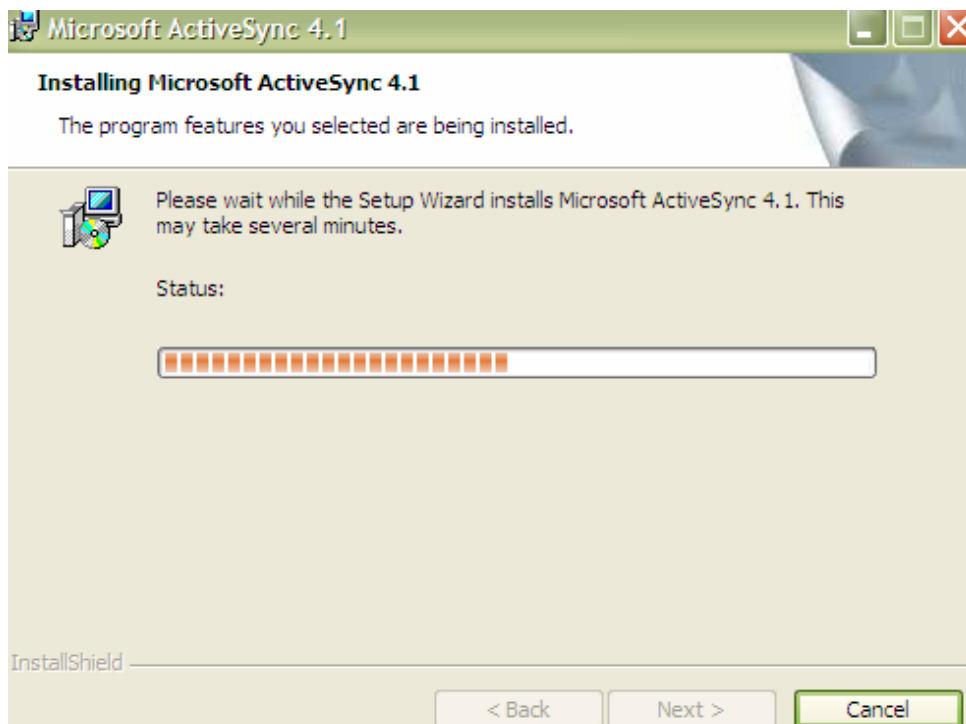
User Manual

5.3 Connecting with a Desktop

ActiveSync® is the software that allows users to move files, update message contents, and address book between desktop and MC5000,OPTIMUS PDA SP5700 SERIES . When the PDA's cradle and desktop computer are connected with USB cable, insertion of your MC5000,OPTIMUS PDA SP5700 SERIES into the cradle activates a Microsoft ActiveSync window, which appears on the desktop and indicates the synchronization status.

5.3.1 Installing ActiveSync® on a Desktop

Insert the ActiveSync CD in the CD-ROM drive. The installation manager will lead you quickly through the installation process. You can also download the latest version of the software from Microsoft Corporation website at <http://www.microsoft.com>



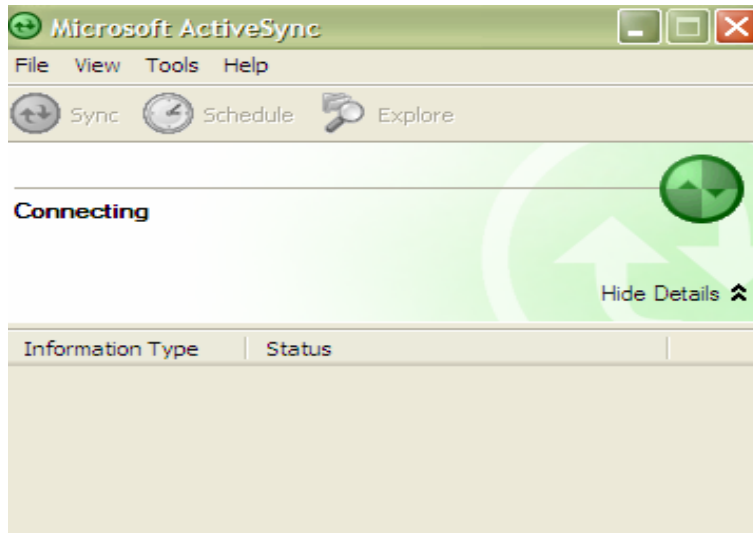
Picture 26 ActiveSync 4.1 setup wizard

If the auto installation screen does not appear, click on the setup.exe file on the accompanied CD-ROM.



5.3.2 Setting up a partnership

Insert your MC5000,OPTIMUS PDA SP5700 SERIES in the cradle, which is connected to the desktop computer by a USB or RS232 cable. Then the screen will display a window indicating that the PDA is being **connected**.



Picture 27 Connection process

The desktop computer and your PDA will attempt to synchronize. As a result the partnership window appears. Tap on **Yes** button and then select **Next**.

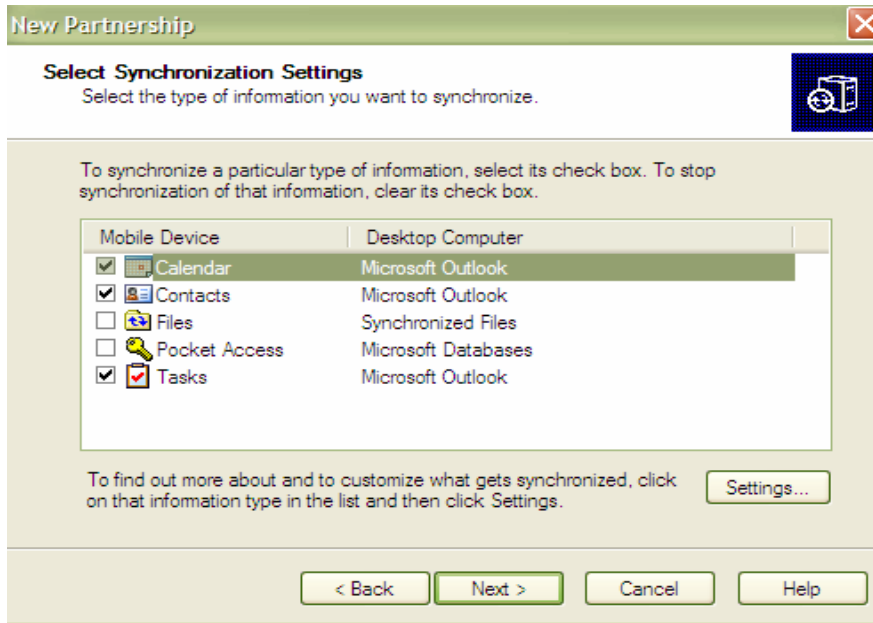


Picture 28 Partnership set up window



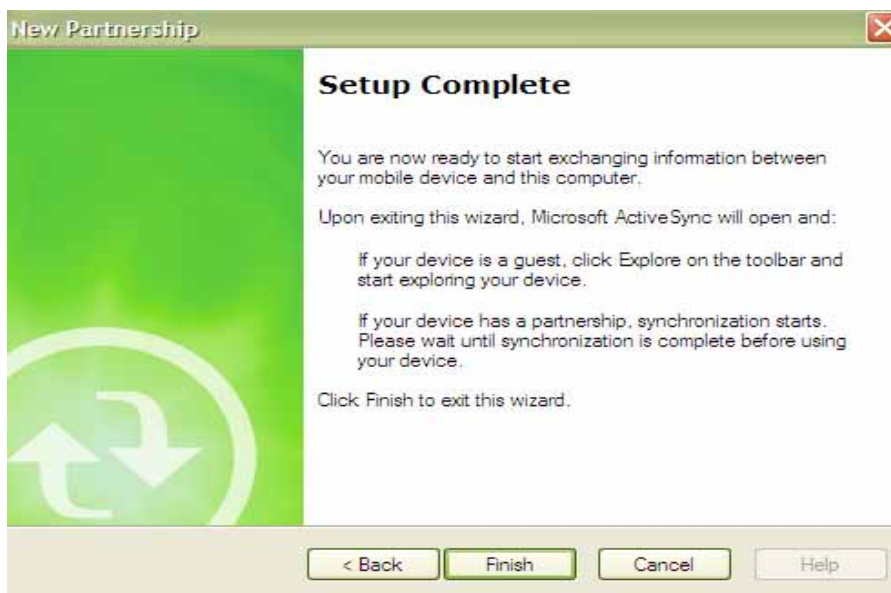
User Manual

The **Select Synchronization Settings** Window appears. Here, select the items you want to synchronize, and then press the **Next** button.



Picture 29 Synchronization options

To complete the process select the **Finish** button. Then the basic settings and configuration for a PC and the PDA connection will be established.

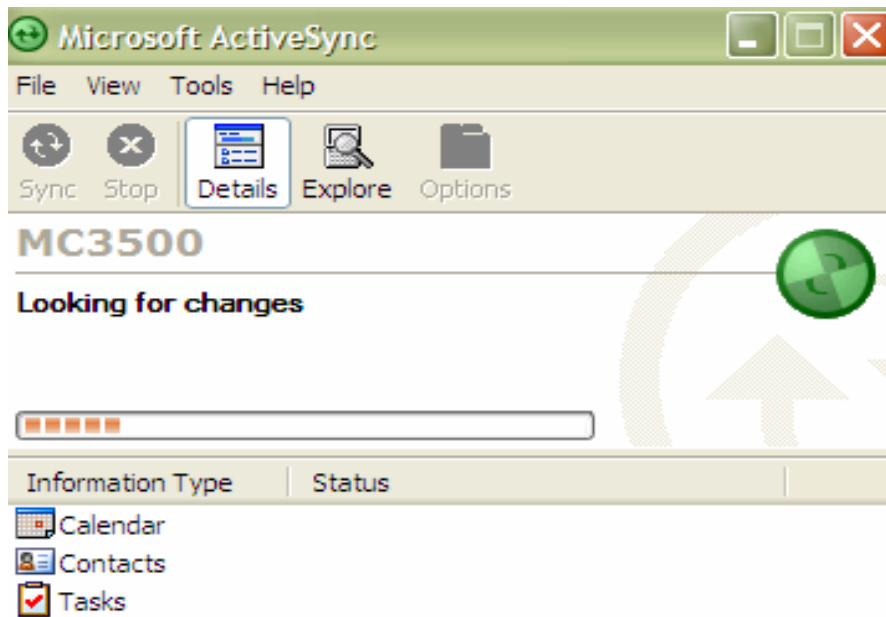


Picture 30 Setup completion



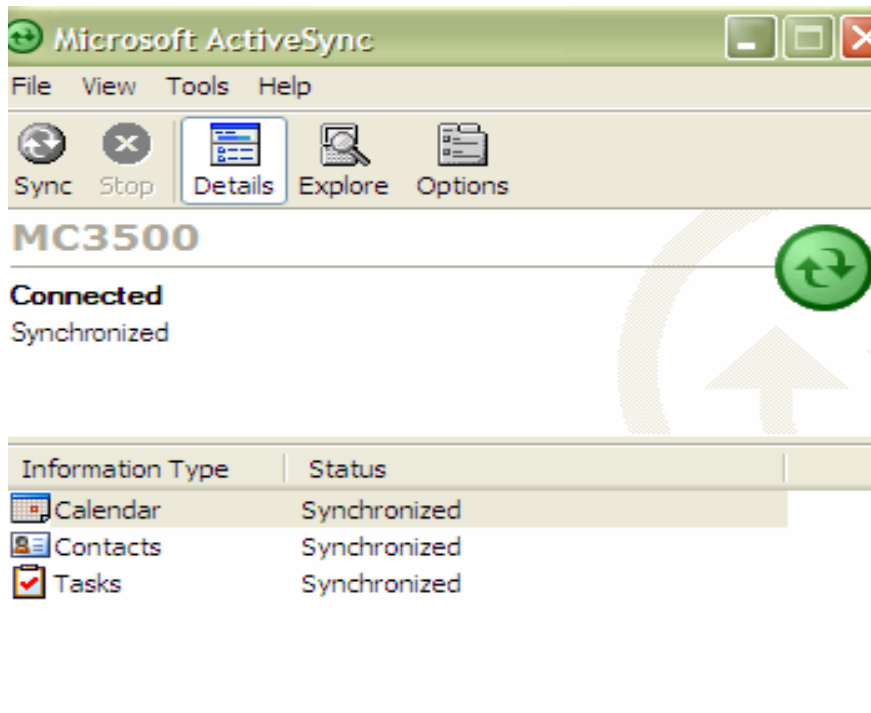
User Manual

Go through the earlier steps to run ActiveSync®.



Picture 31 Synchronization process

At the end, the window informs that synchronization has been successfully completed.



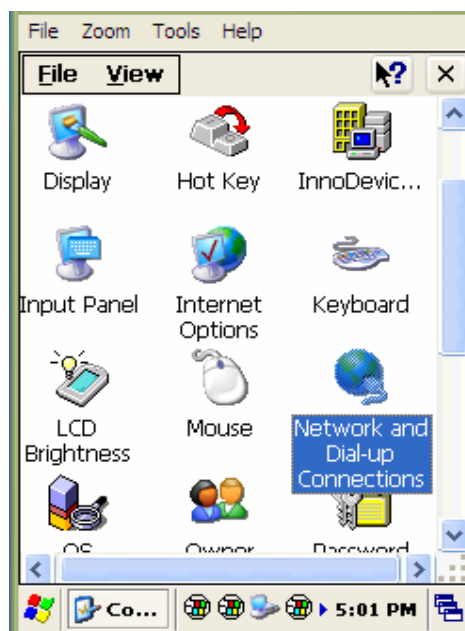


Picture 32 Synchronization status

5.4 Wireless LAN

With a wireless LAN type model, you can log into the Internet wirelessly through the internal WLAN card. However, your PDA must be set up in accordance with the equipment specification (including Hotspot) that is required to access the wireless LAN. To meet these needs MC5000,OPTIMUS PDA SP5700 SERIES must be properly configured.

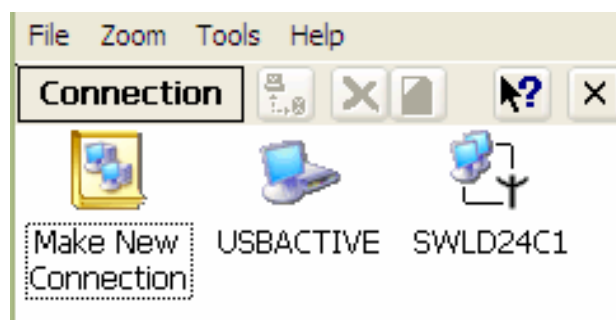
Select **Start** → **Settings** → **Control Panel**, and then double tap **Network and Dial-up**



Connections icon.

Picture 33 Network and Dial-up Connections icon

Select an appropriate driver to add the Wireless LAN card.



Picture 34 Initializing connection process



User Manual

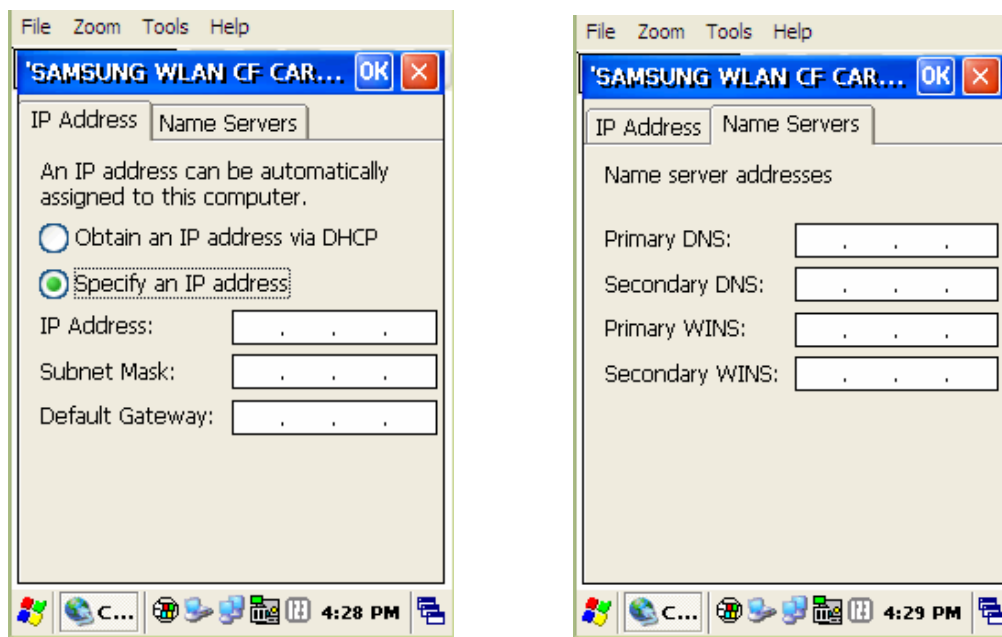
Note: *Driver types may vary depending on applied wireless LAN card. Therefore, you should check your driver characteristics before attempting to activate connection.*

Dynamic IP

Select **Obtain an IP address via DHCP** server. In this case the wireless communication is not available because DHCP server does not assign static IP addresses.

Static IP


- i) Select **Start** → **Settings** → **Control Panel**, then double tap **Network and Dial-up Connections**.
- ii) Select relevant driver to add Wireless LAN card. For example, this unit is equipped with CISCO product.
- iii) Select the **IP Address** tab, and then point one the **Specify an IP address** radio button. Enter the **IP Address**, **Subnet Mask** and **Default Gateway** data.
- iv) Press the **Name Servers** tab, and enter required data. Consult the network manager for providing necessary data.



Picture 35 IP address and server address assignment

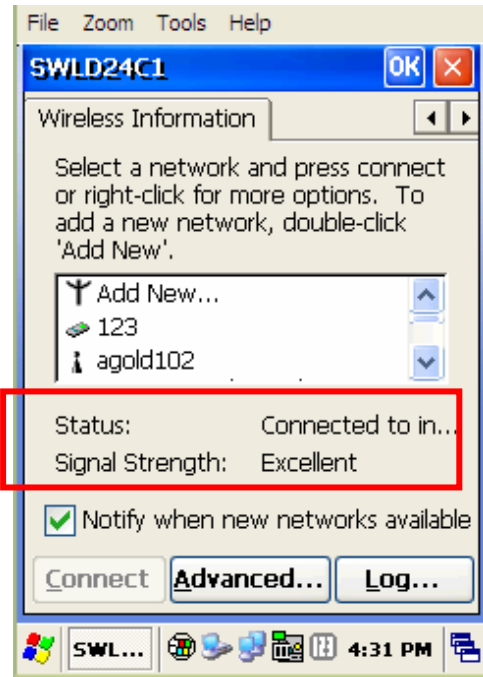


User Manual

* To check your network connection status, select the  icon on the Taskbar, and then click on the **Wireless Information** tab. The **Signal Strength** is indicated as **Very Good** or **Good** etc...



Picture 36 Network connection icon



Picture 37 Connection status

v) Select the **IP Information** tab, and make sure that the static IP address data has been entered correctly.

Note: *The IP address data is not lost when a soft reset is performed. However, it should be re-entered again, if a hard reset has been executed.*



User Manual

5.5 GSM / GPRS

In general GPRS module works as a mobile data service to users of GSM mobile devices of 2.5G and provides moderate speed data transfer, by using TDMA channels in GSM network. In order to set up a GPRS connection, a user needs to specify Access Point Name (APN), user name and password, and very often IP address, all provided by the network operator.

5.5.1 Initializing the Modem



Picture 38 Running DDialer from the desktop



Picture 39 Open DDialer display

When PDA startup, the **DDialer** is activated automatically and initializes GSM Module

When initialization is under process you can observe the following icons in the Taskbar:

- : Modem suspended
- : Modem activation in progress
- : SIM card information is being loaded






Picture 40 Signal strength



Picture 41 Connection quality

Antenna and signal icon indicates GSM or DCS signal strength as follows:

-  : Found signals only
-  : Found signals and identified an operator
-  : Service area not available



Picture 42 Operating mode

You can switch on/off GSM module by pressing "END" button on the screen for a while. After turning GSM function off, you will notice a display of "Modem Off" message.



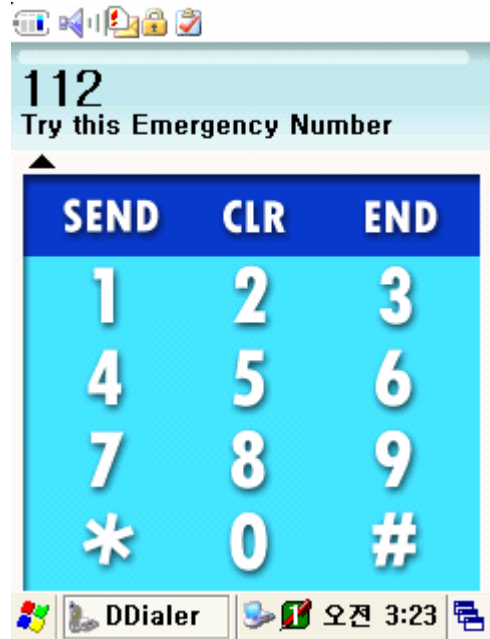
User Manual

5.5.2 Checking Subscriber Identity Module (SIM)

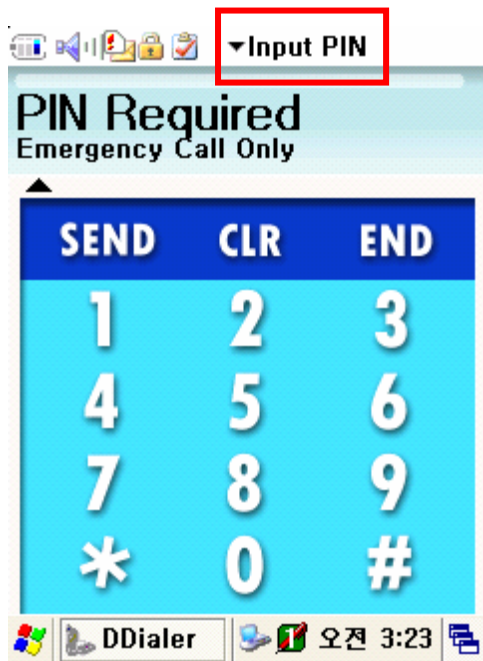
As soon as the Phone User Interface starts, the program checks stored SIM data. The SIM card requires PIN information and to enter it you should precede in accordance with the method depicted on the Pictures 45 and 46.



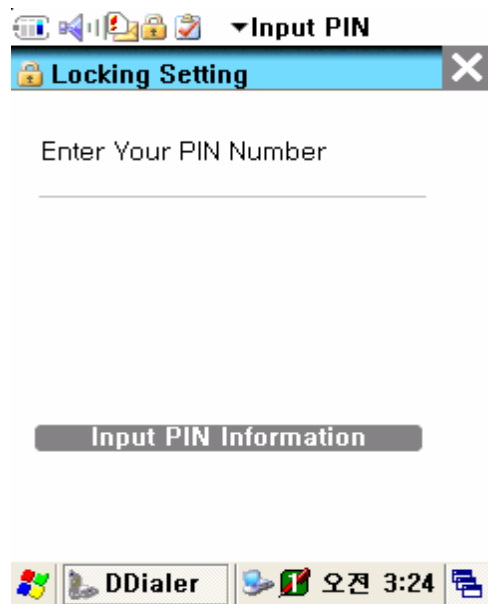
Picture 43 Request for SIM card insertion



Picture 44 Availability of emergency calls



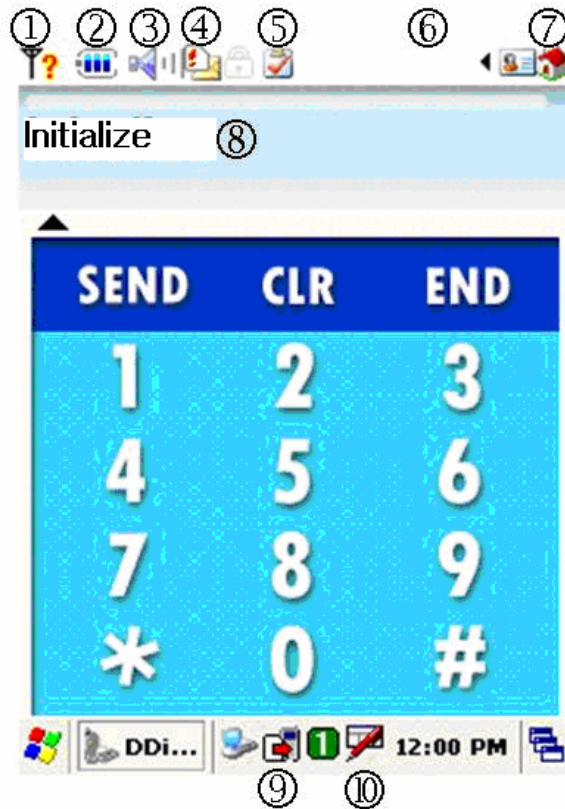
Picture 45 Request for PIN



Picture 46 Entering PIN data



5.5.3 Menu



Picture 47 Display after connecting to a network

Battery information (Empty : Low : Mid : Full :)

Ear volume status (Min : , Mid : , Max :)

SMS memory status

No unread messages :

Single unread message :

Many unread messages :

SIM card is full (or in test mode) :

UI lock indicator

Mode status

UI Menu : Phonebook / History / Message selection

Phone setting menu : Sound, Network, Version, Message, Locking (PIN), Menu Setting

Display window status

Modem status / Signal strength

Keyboard icon



User Manual

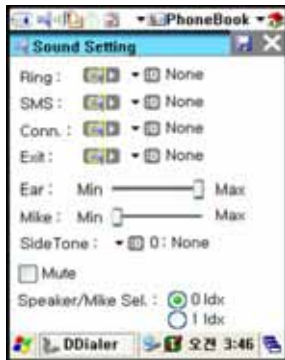
1) Phone Setting Menu



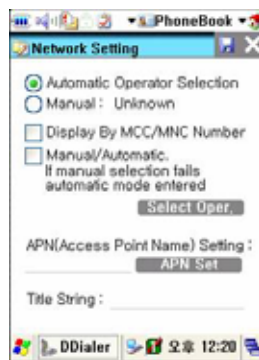
Picture 48 Phone setup options

2) Setup options

By tapping items from Phone Setting Menu, you can open sound, network, SMS, lock, and version info setup windows.



Picture 49 Sound setup



Picture 50 Network setup



Picture 51 SMS setup





User Manual

Picture 52 PIN edit

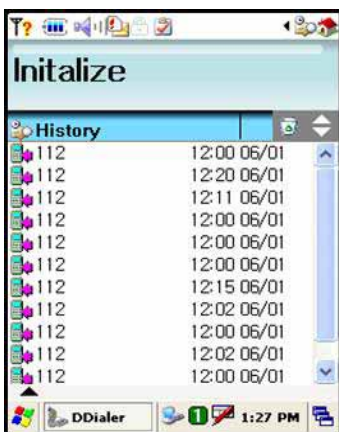
Picture 53 Version info

3) User Interface Menu

To change phonebook, check out history, and mailbox settings, tap on selected item on UI menu drop-down list.



Picture 54 User Interface functions



Picture 55 History record



Picture 56 Phonebook



Picture 57 Mailbox

- A) Call Log: Views call log and history
- B) Phone Book: Displays list of callers and along with their names and respective phone numbers



User Manual

C) Mail Box: Checks SMS box

5.5.4 Voice call

4.1 Voice Dialing/Getting

If you want to make a call you should use the key pad or LCD touch-screen driven panel.



Picture 58 Touch-screen keypad

- 4) Voice call : Use the keypad (Send/End, number keys) or touch-screen LCD
- 5) Volume control : Navigate through the 4-way direction key pad (Up/Down)



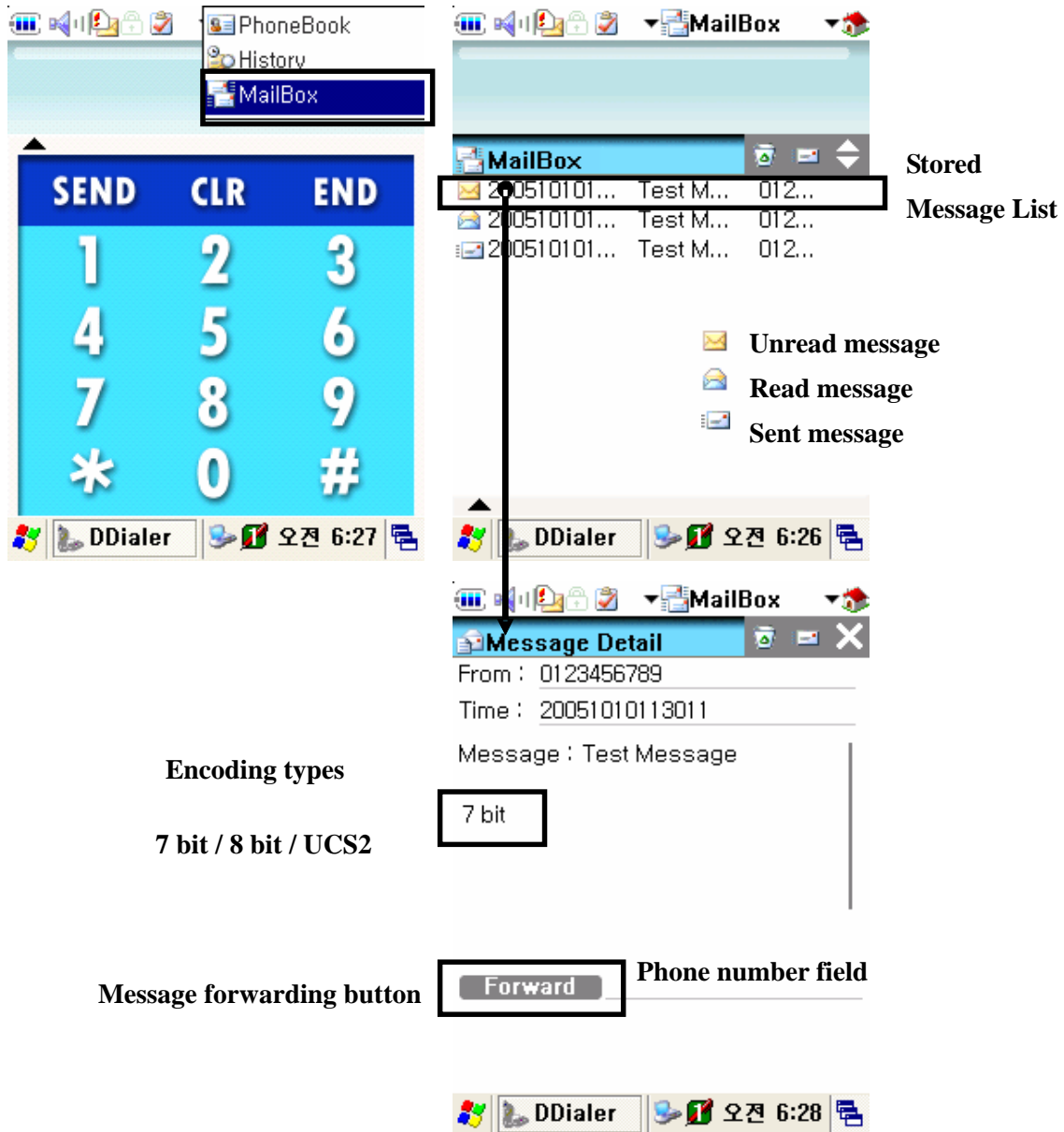
Picture 59 Keyboard



User Manual

5.5.5 Short Message Service

Reading Stored SMS texts

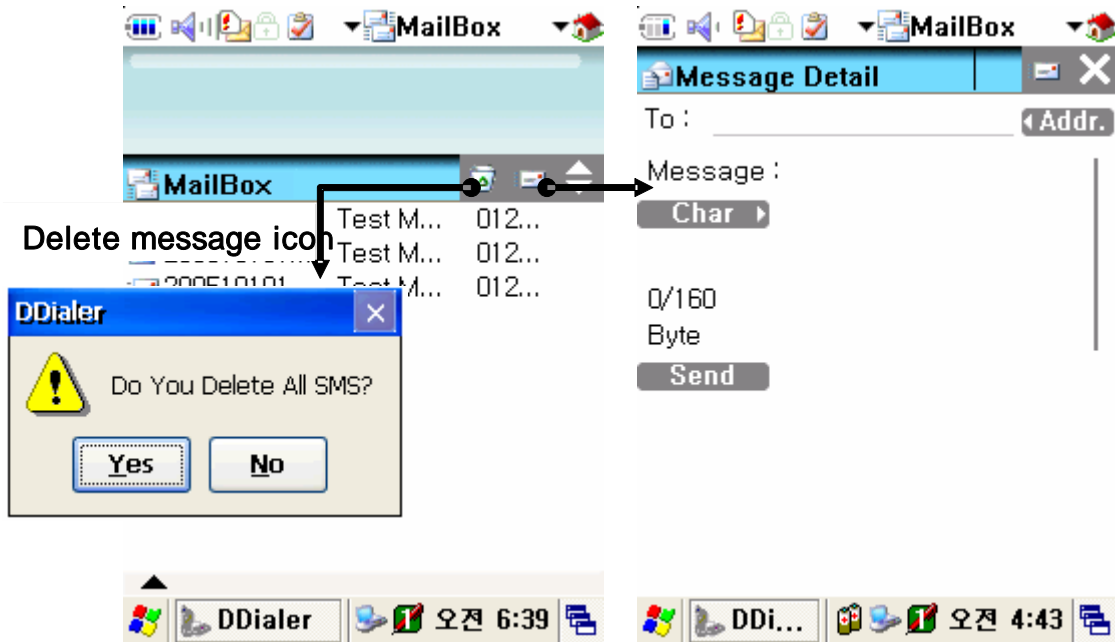


Picture 60 Mailbox display




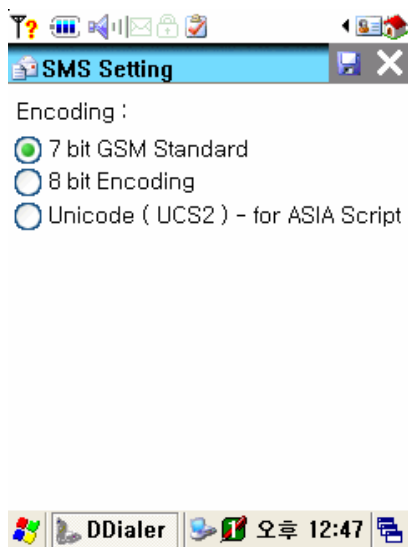
User Manual

Sending a Message



Picture 61 Mailbox and SMS windows

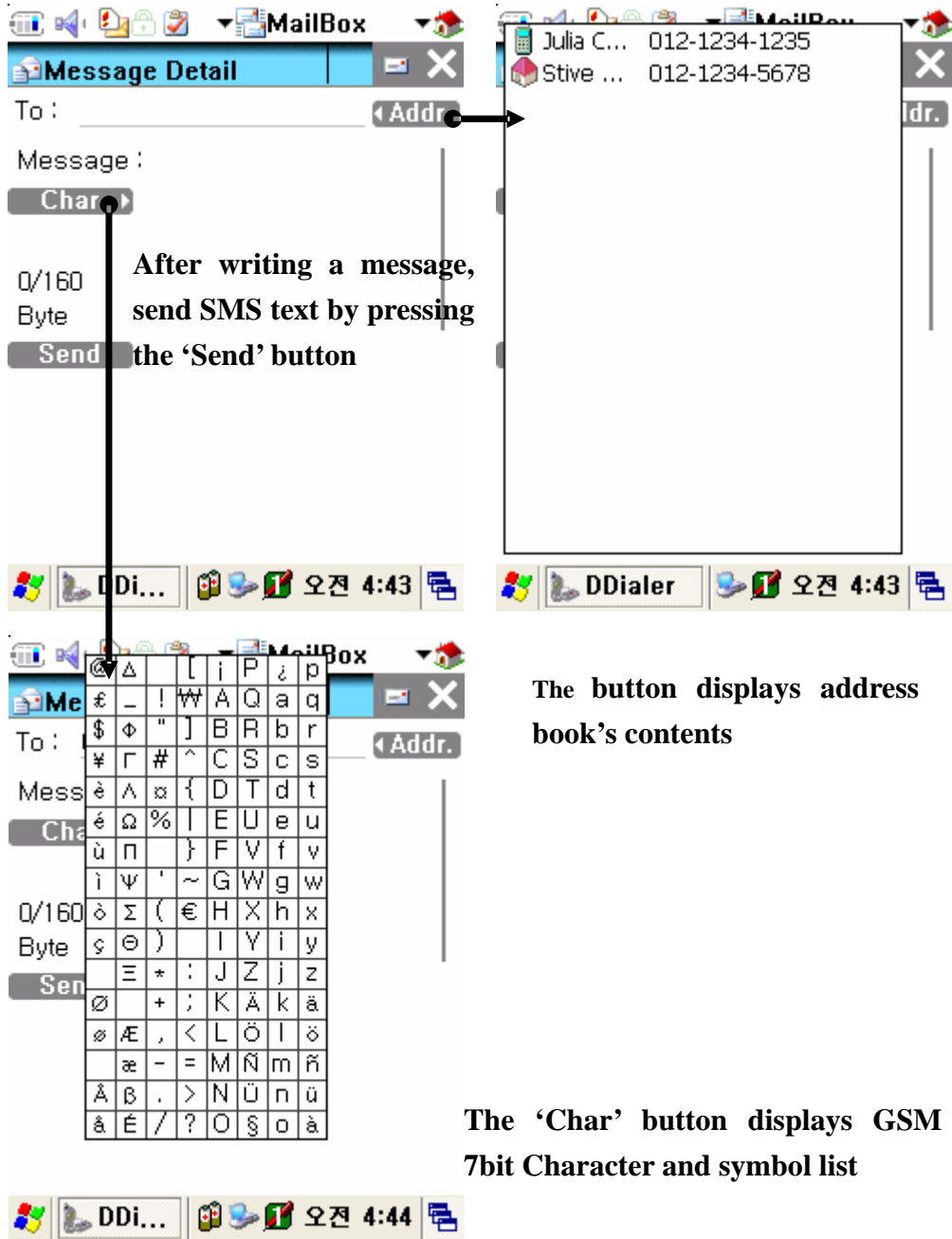
- Tap on the  icon to write a message
- In the **Blue Box**, write a message by using Character recognition program or PDA's keypad
- Press **Send Message** button to initiate transmission process
- Select an appropriate encoding program. Among SMS encoding options are: 7bit standard, 8bit standard, and UCS2 (Unicode16).





User Manual

Picture 62 SMS encoding program selection

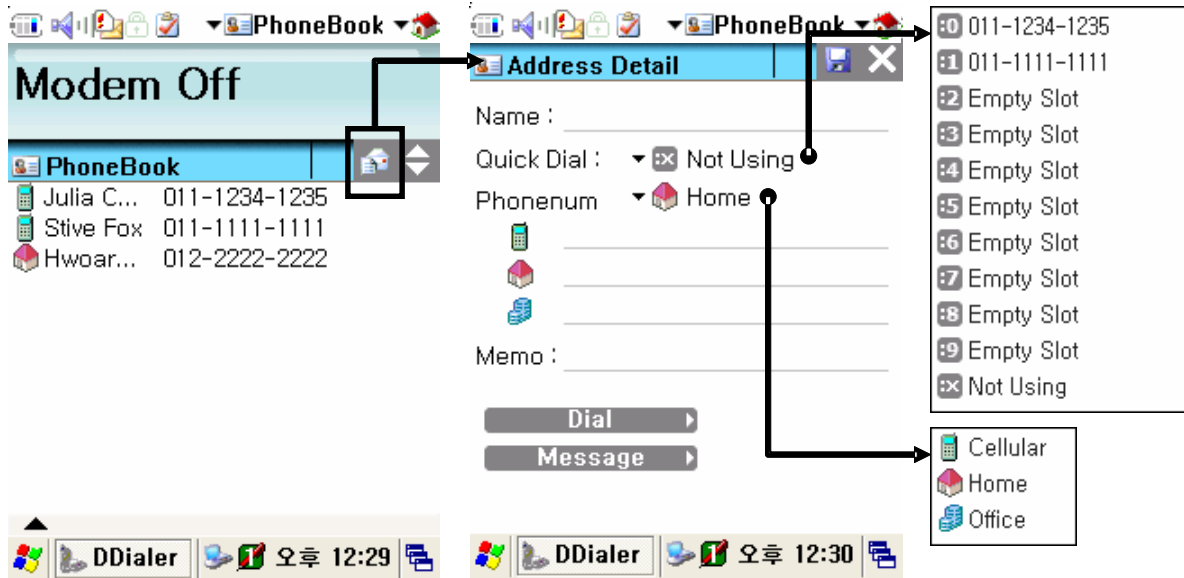


Picture 63 Editing text and addressing SMS



5.5.6 Phonebook

How to Add a New Phone Number

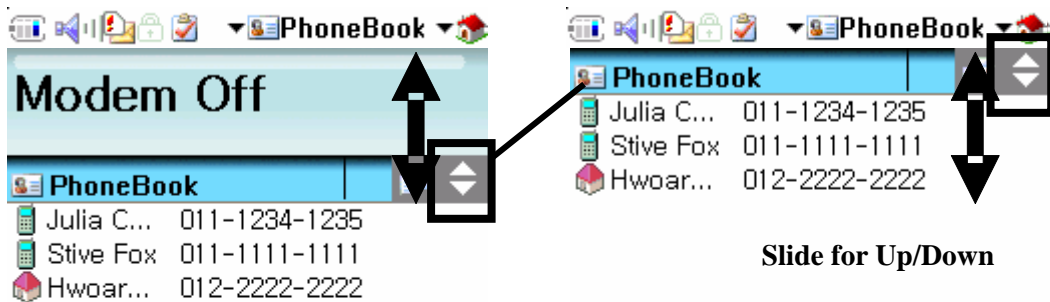


Picture 64 Adding a new contact

Tap on the icon to add a new address

- 16 Enter phone number and other information into the “Address Detail” window
- 17 Specify a “Quick Dial” number, or select primary phone number among cellular, home and office phones

viewing the whole list



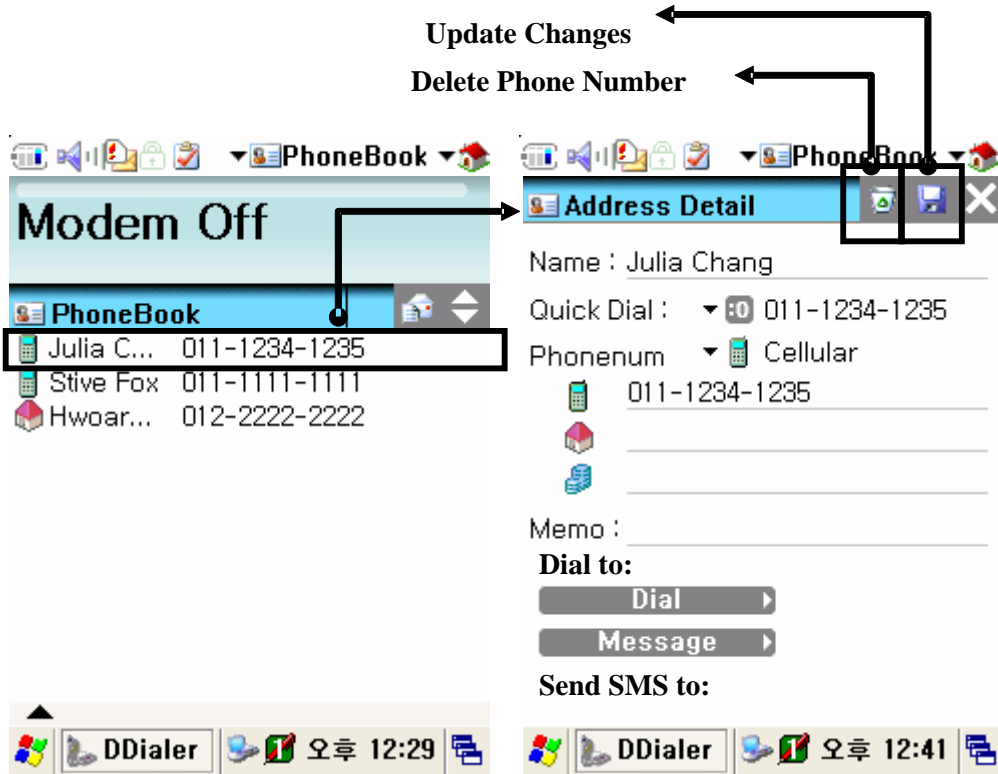
Picture 65 Phonebook content





User Manual

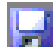
Updating Phone Numbers



Picture 66 Management of phonebook numbers

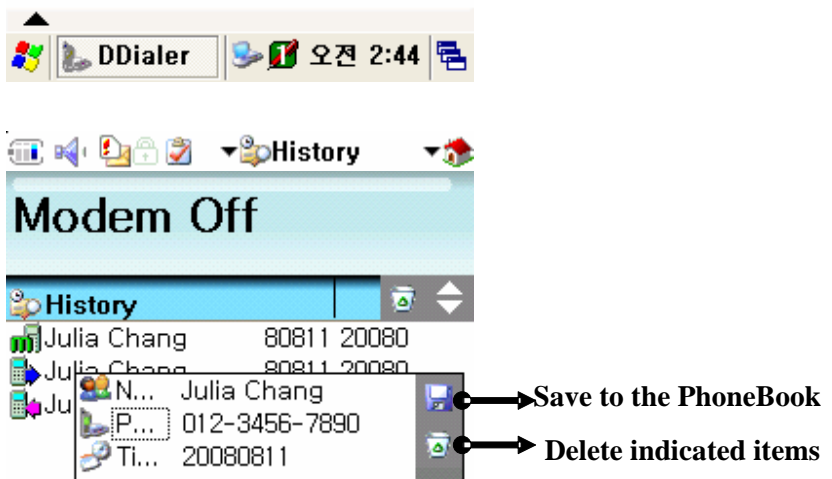
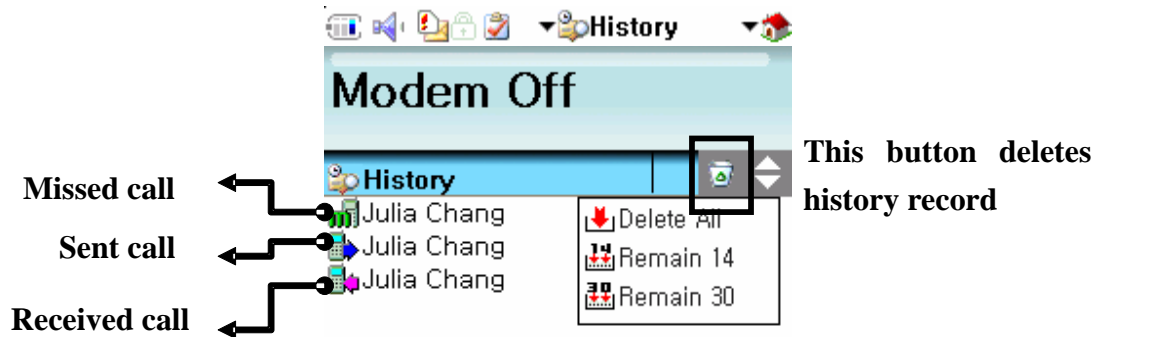
Edit PhoneBook

Select phone number

When the “Address Detail” screen appears, update phone number information, delete selected item, or save changes by tapping the  icon



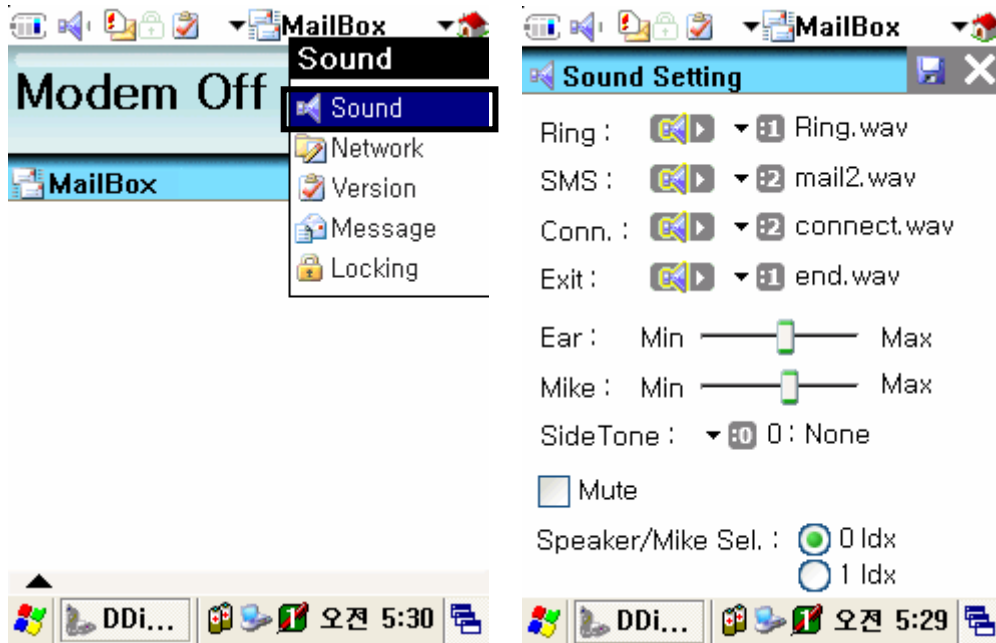
5.5.7 History



Picture 67 Tracking history records



5.5.8 Sound Settings



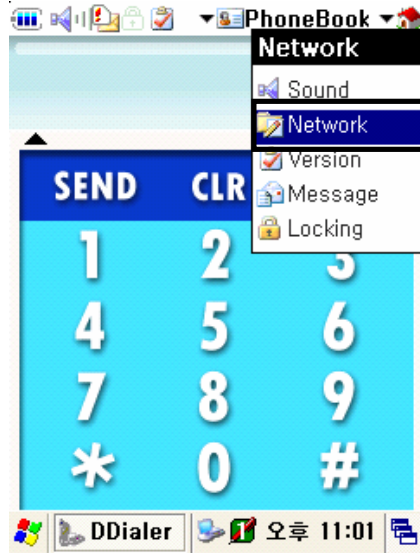
Picture 68 Sound configurations

Thanks to this screen configuration tools you can change Ring Sound / Message Notification Sound / Connect HO Sound and Network Register Sound / Hang-Up and Network Unregister Sound, and other volume parameters.

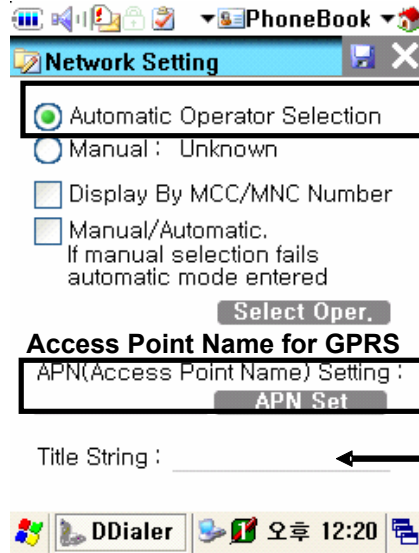


User Manual

5.5.9 Setting a Wireless Network



Select Network Menu



Operator (PLMN) Automatic Selection, is set up as default

When filling in this field, you will set a name for PhoneUI front screen.

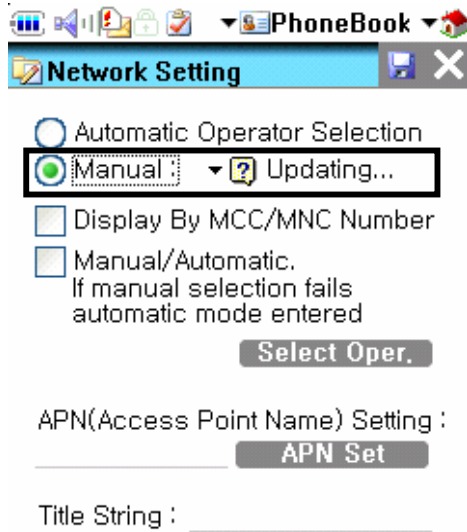


In this example, we use for "InnoTeletek" PhoneUI

Picture 69 Network advanced settings

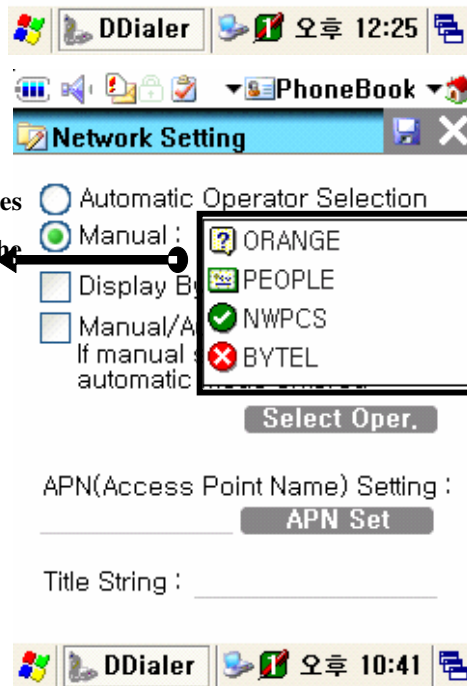


User Manual



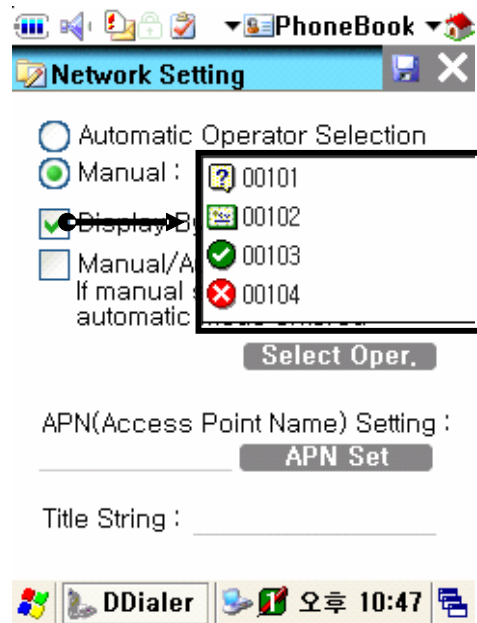
By selecting manual Operator mode, the system will be searching operators

While pointing at Display by MCC/MNC Number', you will see the MCC/MNC value.



Highlighted icon indicates status of the operators

- Unknown
- Available
- Connected
- Forbidden



Picture 70 Connecting to network in manual mode



User Manual

5.5.10 How to Lock the Menu

1. Input your PIN number
2. Select PIN option (check box)
3. Press tab 'Input PIN information'

If you selected 'Change PIN Number option Select PIN option (check box)

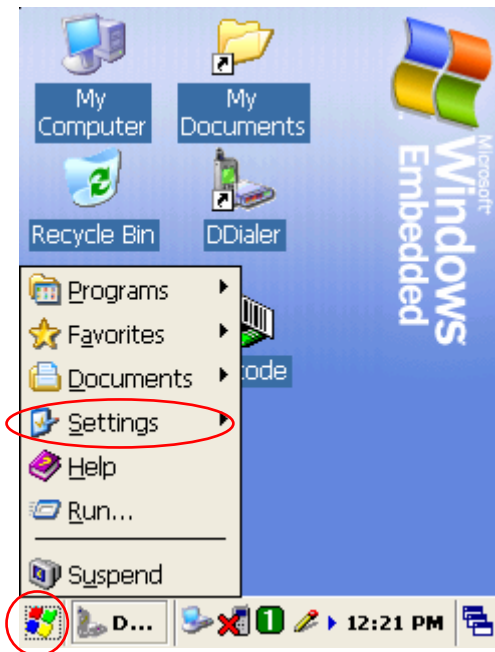
Picture 71 Locking menu values



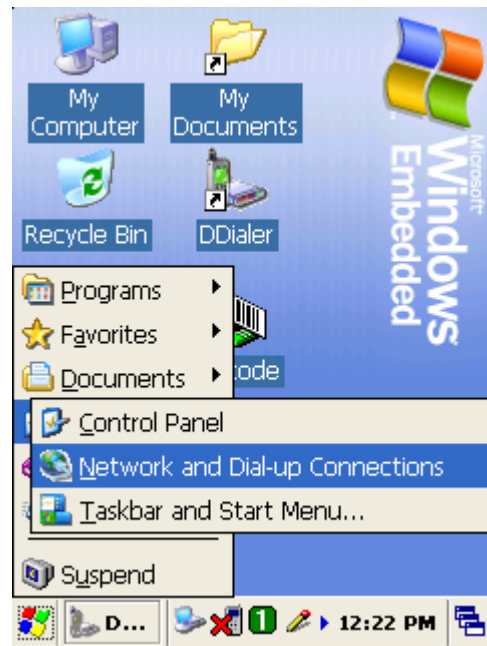
User Manual

5.5.11 Connecting to GPRS Network

To establish a new GPRS network, you should set the Access Point Name (APN) first. After having it done press APN press APN Set and Save icon.



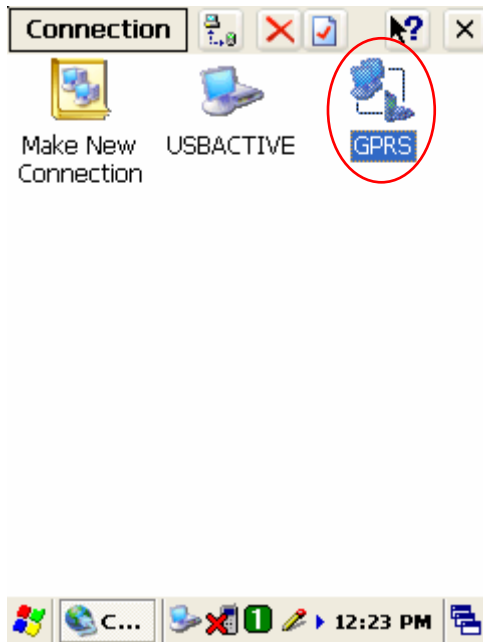
Picture 72 Settings tab on the Start Menu



Picture 73 Network Connections tab



User Manual



Picture 74 GPRS icon



Picture 75 Dial-up connection window

Then run the GPRS connecting program according to the following method:

Tap **Start** → **Settings** → **Network and Dial-up Connections**. Double tap the **GPRS** button and press **Connect** tab.



6. Troubleshooting

Problem	Cause	Solution
OS is not loading	<i>Low-Battery</i>	Charge or replace the battery.
	<i>Problem with Reset button's rubber</i>	If reset rubber can be pressed with your finger, then cut the tip of the rubber.
	<i>Battery malfunction</i>	Take out the battery from the compartment, and press the reset button. Then insert back the battery into the PDA.
PDA turns itself off	<i>OPTIMUS_PDA is inactive (Sleep Mode)</i>	Press the Power button, then the windows restores. Your PDA becomes idle after some time of inactivity. User Idle switch state can be set on the Power Properties window. Tap Start Settings → Control Panel Power .
Battery does not charge	<i>Battery failure</i>	Replace battery. If your terminal still does not operate, try a hard reset.
	<i>Device was removed from cradle while battery was charging</i>	Insert your PDA into the cradle and start charging. Assure that your terminal is turned off, or in a sleep mode while being charged.
	<i>I/O connector is not clean</i>	Clean up the I/O connector.
Characters on display are invisible	<i>PDA is not powered on</i>	Press the Power button.
	<i>Battery is not charged</i>	Charge the battery.
Communication failure with IrDA printer	<i>IP error</i>	Fix the static IP address.
	<i>IP crash</i>	Check whether more than two users work under the same static IP address.
The stylus pen does not tap correctly	<i>Shortcut icons does not activate the corresponding function</i>	Select Start → Settings and double tap on Stylus . Then recalibrate the stylus.
A message appears stating that your PDAs memory is fully occupied	<i>Too many files stored in memory module</i>	Delete unused files or transfer data to your PC.
	<i>Memory setting problem</i>	Adjust the memory allocation. Tap Start Settings → Control Panel , then double tap the System tab. Select Memory and adjust the slider.
	<i>Too many applications are installed on your Optimus_PDA</i>	If you have installed new applications on your PDA, remove unused applications to extend memory capacity. Tap `4 Start Settings → Control Panel , and double tap on Remove Programs . Then select useless programs and tap on Remove button.



User Manual

Problem	Cause	Solution
Your PDA does not accept scan data input	<i>Scan window is dirty</i>	Clean scanner window with a soft, wet cloth.
	<i>Object moves while scanning</i>	Fix the object while scanning.
	<i>Scanning application is improperly opened</i>	Tap on Start , then Settings → Control Panel , and select the System tab to verify whether the unit is loaded with a scanning application or not.
	<i>Unreadable barcode</i>	Scan engine can not read damaged barcodes.
	<i>Distance between your terminal and the object is both; too far or too close</i>	Adjust the distance between them at approximately 6 inches, and try again.
	<i>PDA is not programmed for the barcode</i>	Check whether your PDA is programmed to read the type of barcode you are scanning.
	<i>Scanning beam not aligned with a barcode</i>	Angle the barcode at 45 degrees or place scan beam against a barcode to use direct rays.
ActiveSync does not operate	<i>OPTIMUS_PDA was removed from cradle during communication process</i>	Insert you PDA into the cradle again.
	<i>Incorrect cable configuration</i>	Verify cable genuineness, and check the status of connection.
	<i>ActiveSync is incorrectly installed or configured</i>	Install the ActiveSync program again.
	<i>Connected as a Guest, not by previously created name</i>	Take the terminal out, then insert it the cradle again and enter your name again.
Sound is not audible	<i>Volume level is very low or turned off</i>	Check the volume slider in Volume & Sounds (Tap on Start → Settings → Control Panel) to ensure the volume is at adequate level.
	<i>Dust fills the speaker</i>	Clean up the speaker.
Program does not recognize handwriting	<i>Characters are written incorrectly</i>	To recognize handwriting input, characters must be written carefully, in a certain way.
	<i>Character strokes are written on the wrong part of the LCD</i>	Fix the letter recognizer.

Table 1 Solving problems



User Manual

7. Specifications

7.1 Physical Characteristics

Dimensions*	78 W x 177 L x 34 H (Top); 26 H (Bottom) mm / 3.1 x 7.0 x 1.3 x 1.0 in.
Weight *	256g / 9.03oz. (WLAN, WPAN, Camera, Scanner Included/ Except Battery)
Drop Specification	1.5m / 5 ft onto Concrete Surface (Double Drop for Every Side)
Operating Temperature	-20 ° to 50 °C (-4 ° to 122 °F)
Storage Temperature	-30 ° to 70 °C (-22 ° to 158 °F)
Environmental Sealing	IP54 (Dust and Water Splash Protected)
Humidity	5% to 95% RH Non-condensing
Electrostatic Discharge (ESD)	8KVDC/Air, 4KVDC/Contact
Key Pad	2 Triggers, Power, Backlight (LED Backlight Supported), Start, End, 4 Way Navigation Pad, Shift, Function, Backspace, Enter, 12 User-selectable Keys (Numeric, English/ Korean)

Table 2 Physical specifications

* Subject to change without prior notice.

7.2 Performance

CPU	Intel XScale PXA270 microprocessor (520MHz)	
Operating System	Microsoft Windows CE™5.0	
Memory (ROM/RAM)	- Flash ROM: 128 MB - SDRAM: 128 MB	
Display	- 3.5" TFT Color LCD (Transflective Type) - Resolution: 240 x 320 pixels	
Standard Communications	RS232, USB v1.1(Host, Client), IrDA v1.2	
Sound (MIC and Speaker)	Water-proof, Internal Microphone and Speaker for Voice Recorder	
Expansion Slot	Mini SD card slot	
Radio Capacity	- WWAN: CDMA(EVDO)(Optional), GSM/GPRS (Optional) - WLAN: IEEE802.11b/g (Up to 11Mbps/54Mbps) (Optional)	
Barcode Scanner	1D Barcode: UPC/EAN/KAN, Code 39/ 93/ 128, Interleaved 2 of 5, etc. 2D Barcode: PDF417, QR Code, Data Matrix, Maxi Code, etc.	
SW	- Desktop device manager: Microsoft® ActiveSync	
Application Development	- Microsoft Windows CE SDK, InnoTeletek SDK	
Battery	Main Battery	Rechargeable Li-Ion Battery (3.7VDC, 2000mAh)
	Back-up Battery	Rechargeable Battery (3.7V, 130mAh)
	Battery Life	3 - 72 hours
	Charge Time	Less than 3 Hours

Table 3 Hardware specifications



8. Limited Warranty Statement

General

This Limited Warranty applies to the InnoTeletek brand name products sold with this Limited Warranty Statement.

This Limited Warranty may be enforced in any country where InnoTeletek or its authorized service providers offer warranty service subject to the terms and conditions set forth in this Limited Warranty Statement.

However, warranty service availability and response times may vary from country to country and may also be subject to registration requirements in the country of purchase.

InnoTeletek warrants that the InnoTeletek product you have purchased from InnoTeletek or from an InnoTeletek authorized reseller is free from defects in materials and or workmanship under normal use during the warranty period.

The warranty period starts on the date of purchase from InnoTeletek or from a InnoTeletek authorized reseller. Your dated sales or delivery receipt, showing the date of purchase of the product, is our proof of purchase date.

During the warranty period, InnoTeletek will repair or replace the defective parts with new parts, or, at InnoTeletek's discretion, used parts that meet or exceed performance specifications for new parts. All parts or products removed under this warranty become property of InnoTeletek. The replacement part or product takes on the warranty status of the removed part or product. In the unlikely event that your InnoTeletek product has a recurring failure, InnoTeletek, at its discretion, may elect to replace your product with comparable product. This is your exclusive remedy for defective products.

Before returning any unit for service, be sure to back up data and remove any confidential, proprietary, or personal information. InnoTeletek is not responsible for damage to or loss of any programs, data or removable storage media.

This Limited Warranty does not apply to expendable parts. This Limited Warranty does not extend to any product from which the serial number has been removed, damaged or rendered defective (a) as a result of accident, misuse, abuse, or other external causes;(b) by operation outside the usage parameters stated in the user

documentation that shipped with the product; (c) by the use of parts not manufactured or sold by InnoTeletek; or (d) by modification or service by anyone other than (i) InnoTeletek, (ii) a

InnoTeletek authorized service provider or (iii) your own installation of end-user replaceable parts if available for your product in the servicing country.

Limitation of Liability

InnoTeletek is not liable for any damages caused by the product or the failure of the product to perform, including any lost profits, lost savings, incidental damages, or consequential damages. InnoTeletek is not liable for any claim made by a third party or made by you for a third party.

This limitation applies whether damages are sought, or a claim made, under this Limited Warranty or as a tort claim (including negligence and strict product liability), a contract claim, or any other claim. This limitation can not be waived or amended by any person. This limitation of liability will be effective even if you have advised InnoTeletek or an authorized representative of InnoTeletek of the possibility of any such damages. This limitation of liability, however, will not apply to claims for personal injury.

EXCEPT AS EXPRESSLY SET FORTH IN THIS LIMITED WARRANTY, INNOTELETEK MAKES NO OTHER WARRANTIES, EXPRESSED OR IMPLIED, INCLUDING ANY IMPLIED WARRANTIES OF MERCHANTABILITY AND FITNESS FOR A PARTICULAR PURPOSE. INNOTELETEK EXPRESSLY DISCLAIMS ALL WARRANTIES NOT STATED IN THIS LIMITED WARRANTY.

ANY IMPLIED WARRANTIES THAT MAY BE IMPOSED BY LAW ARE LIMITED TO THE TERMS OF THIS WORLDWIDE LIMITED WARRANTY STATEMENT.

Some states or countries do not allow limitation on how long an implied warranty lasts or the exclusion or limitation of the incidental or consequential damages for consumer products. In such states or countries, some exclusions or limitations of this Limited Warranty may not apply to you. This Limited Warranty gives you specific legal rights.

You may also have other rights that may vary from



User Manual

state to state or from country to country. You are advised to consult applicable state or country laws for a full determination of your rights.

Options and software

The warranty terms and conditions for InnoTeletek options are as indicated in the Limited Warranty Statement applicable to InnoTeletek options.

InnoTeletek's only obligations with respect to software distributed by InnoTeletek under the InnoTeletek brand name are set forth in the applicable end-user license or program license agreement. Non-InnoTeletek hardware and software products are provided "AS-IS." However, non-InnoTeletek manufacturers, suppliers, or publishers may provide their own warranties directly to you.

Warranty Period

The warranty period for this product is one (1) year from the date of product purchase. This warranty does not extend to expendable parts.

Types of Warranty Service

If your product needs service, call the InnoTeletek After-sales Service Dept. in your country or state at the number listed in the Contacting Customer Support in later section. A technical support specialist will help you diagnose the problem.

Carry-in Warranty service

Carry your product into InnoTeletek Authorized Center of warranty repair. To locate the service provider nearest you, access the service provider's location on the InnoTeletek website; www.InnoTeletek.com or local reseller's website you have purchased InnoTeletek product.



User Manual

Contacting InnoTeletek

You are recommended to prepare the following information before you call InnoTeletek or a local service provider:

- Product Serial Number and Model Name
- Application error messages
- Add-on options
- Operating System version number
- Information on a third party hardware or software
- Detailed questions.

If you have any requests for InnoTeletek technical support, e-mail us at service@innoteletek.com or call at +82-2-2059-8741

9. Customer Care Information

InnoTeletek, Inc.

461-25 Junmin-Dong, Yusung-Gu, Daejeon, Republic of Korea 305-811

Tel: +82-(0)2-2059-8741

Fax: +82-(0)2-2059-8733

E-mail: service@innoteletek.com

Information in this document is subject to change without notice

Innoteletek, Inc. reserves the rights to make improvements in the product described in this manual at any time and without notice.

This manual and the software described in this manual are copyrighted. All rights reserved. No part of this manual or the described software may be copied, reproduced, translated or reduced to any electronic medium or machine-readable form without the prior written consent of Innoteletek, Inc.