

Wireless Keyboard

Model Name: HTK-3001 Users Manual



SETTING UP YOUR KEYBOARD

Connecting your Keyboard:

You can easily set up your keyboard by following the instructions in this section.

1. Make sure the computer is turned off. Caution: Plugging or unplugging cables to the computer's PS/2 port while the computer is running can damage the computer.
2. Connect the receiver's cable to the computer's PS/2 port.

ADJUSTING THE KEYBOARD LEGS

The keyboard legs provided are designed to accommodate various body size, chairs, and desks while using this keyboard.

To adjust the keyboard legs, see the instructions on the underside of the keyboard. Choose the option that promotes the least bending of the wrists while typing.

INSTALLATION OF THE DRIVER:

Step 1: Remove any keyboard drivers prior to installing your new keyboard driver.

Step 2: Insert the device driver diskette into your floppy disk drive, and then start the SETUP.

Step 3: Follow the directions in the installation program step by step.

Step 4: Restart your computer.



- After restarting, there will be a figure of keyboard on the right bottom corner of your screen, which indicates the installation has been completed successfully.

ADDITIONAL KEYS:

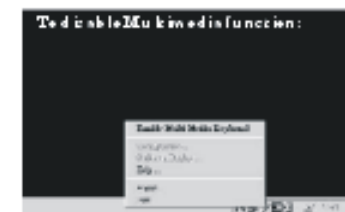
The keyboard includes additional keys that enable you to use Microsoft operating systems and applications more efficiently.

ADDITIONAL INTERNET & MULTIMEDIA KEYS:

Your iConcepts keyboard includes 18 multimedia & Internet functions. Before access these hot keys, please press enable Multi-media function:














After enabling multimedia, you can use the media and internet functions



After disabling multimedia, the keyboard works under normal mode.

MULTIMEDIA & INTERNET

	Sleep	On computers with a power management program, the " Sleep" Hot key enables you to: Start your screen saver / Log off Windows / Shut down Windows.
	Mute	Toggle the sound mute or not mute.
	Browser	Launch the default Internet Browser.
	Volume down	Decrease the main volume of the sound.
	E-Mail	Launch the default mail application.
	Volume up	Increase the main volume of the sound.
	Previous track	Skip to the beginning position of the previous track.
	Stop	Stop playing and return to the beginning position of the track.
	Play/Pause	Start to play a CD title, continue playing the title, or Pause the current play status.
	Next track	Skip to the beginning position of the next track.
	Calculator	Launch the Windows Calculator application.

Installing the Batteries

1. Remove the battery cover.
2. Insert two AAA alkaline batteries. Follow the diagram inside the battery compartment for correct battery orientation.
3. Replace cover.
4. When you are not using the mouse for long periods of time, remove the batteries.

Connect the Radio Receiver

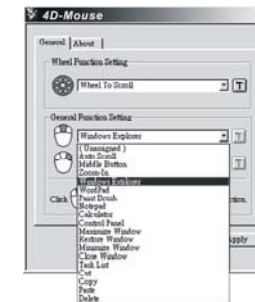
1. Make sure the computer is turned off. Caution: Plugging or unplugging cables to the computer's PS/2 port while the computer is running can damage the computer.
2. Connect the receiver's cable to the computer's PS/2 port.

Installing "4D-mouse" Software

1. Start Windows 95/98/2000/NT4.0 and insert software diskette into drive A or B.
2. Click Start on the Taskbar and select Run.
3. From the Run dialog box, select (or type) A:\SETUP or B:\SETUP and click OK. Follow the on-screen instructions.
4. The "4D-mouse" software must be installed to use all the features of your 4D-mouse.

General Function Setting:

- * Press middle or right button to set the functions below.
- * Press middle or right button once to practice the functions.
- * To stop the function just press middle button.



Wheel Function Setting:

- Choose wheel 4D and press the task button to
- view the window below.



Yahoo! Limited Two Year Warranty

This Warranty covers for the original consumer purchaser only and is not transferable. Products that fail to function properly **UNDER NORMAL USAGE**, due to defects in material or workmanship. Your product will be repaired at no charge for parts or labor for two years.

What Is Not Covered by Warranty

Damages or malfunctions not resulting from defects in material or workmanship and damages or malfunctions from other than normal use, including but not limited to, repair by unauthorized parties, tampering, modification or accident.

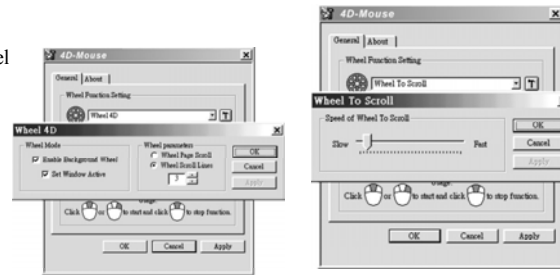
What To Do When Service Required

When returning your defective product (postage pre-paid) for service, your package should include:

1. Copy of the **original** bill of sale.
2. A detailed written description of the problem.
3. Your return address and telephone number. (Daytime)
4. A check or money order for USD \$9.00 payable to iConcepts to cover shipping, handling and insurance. (Other fees may apply for shipments outside the US, please email, write or call for exact shipping charges.)

Choose Wheel Mode/Parameters:

- Enable Background wheel
- Set window Active
- Wheel Page Scroll
- Wheel Scroll lines



- Choose wheel To Scroll and press the task button to set the speed

Troubleshooting

When your wireless mouse does not work after installation

- Make sure you have connected the receiver correctly. The receiver cable goes into the computer's PS/2 mouse port. For optimal performance, place the receiver at least 8 inches or 20 centimeters away from other electrical devices, such as the computer, the computer monitor, or external storage drives.
- Make sure that the batteries you use are new and fresh (not outdated). If you are not getting a response from the mouse or keyboard, please replace the batteries.

TECHNICAL SUPPORT

The quickest way to have your questions answered is to visit our tech support web site at www.sakarhelp.com. There you will find most frequently asked questions and answers about your product. If you cannot find a solution you may email us at help@sakar.com or call 877-397-8200. Email and web inquiries are the FASTEST way to get your problems resolved.

MAIL TO ADDRESS BELOW:

Yahoo! / Sakar International
Attention: Service Department
195 Carter Drive
Edison, NJ 08817

15.105 Federal Communications Commission (FCC) Requirements, Part 15

This equipment has been tested and found to comply with the limits for a class B digital device, pursuant to part 15 of the FCC Rules. These limits are designed to provide reasonable protection against harmful interference in a residential installation.

This equipment generates, uses and can radiate radio frequency energy and, if not installed and used in accordance with the instructions, may cause harmful interference to radio communications. However, there is no guarantee that interference will not occur in a particular installation. If this equipment does cause harmful interference to radio or television reception, which can be determined by turning the equipment off and on, the user is encouraged to try to correct the interference by one or more of the following measures:

---Reorient or relocate the receiving antenna.

---Increase the separation between the equipment and receiver.

---Connect the equipment into an outlet on a circuit different from that to which the receiver is connected.

---Consult the dealer or an experienced radio/TV technician for help.

Regulatory information / Disclaimers

Installation and use of this Wireless Keyboard Mouse device must be in strict accordance with the instructions included in the user documentation provided with the product. Any changes or modifications (including the antennas) made to this device that are not expressly approved by the manufacturer may void the user's authority to operate the equipment. The manufacturer is not responsible for any radio or television interference caused by unauthorized modification of this device, or the substitution of the connecting cables and equipment other than manufacturer specified. It is the responsibility of the user to correct any interference caused by such unauthorized modification, substitution or attachment. Manufacturer and its authorized resellers or distributors will assume no liability for any damage or violation of government regulations arising from failing to comply with these guidelines.

This device complies with Part 15 of the FCC Rules. Operation is subject to the following two conditions:

- (1) This device may not cause harmful interference.
- (2) This device must accept any interference received, including interference that may cause undesired operation.