

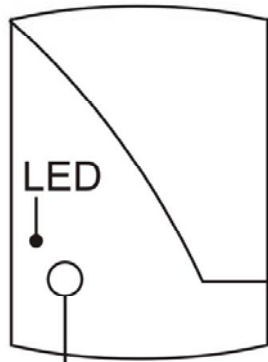
Wireless Mouse

Model Name: HTM-82WR

User's Manual

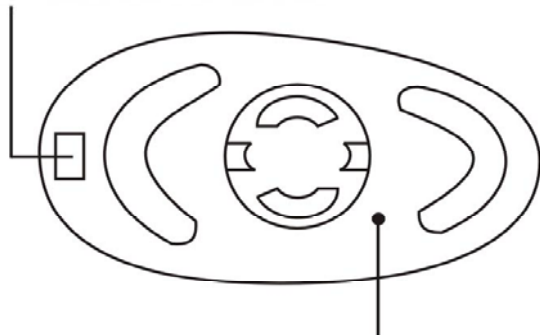


Receiver



ID defining button

Move to right position and open the mice cover



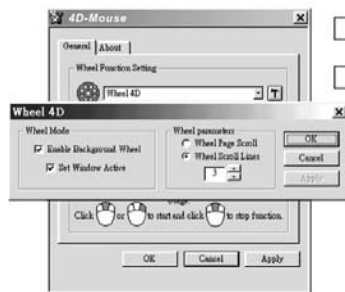
ID set up button

Troubleshooting

When your wireless mouse does not work after installation

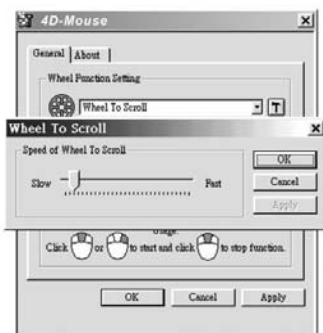
- * Make sure you have connected the receiver correctly. The receiver cable goes into the computer's PS/2 mouse port. For optimal performance, place the receiver at least 8 inches or 20 centimeters away from other electrical devices, such as the computer, the computer monitor, or external storages drives.
 - * Make sure you have installed the batteries correctly.
 - * Establish communication between the receiver and the wireless 4D-mouse: your wireless mouse have two channel changeable, please make sure the channel button of wireless mouse and that of receiver's are on the same position (up or down).
-
-
-

Choose Wheel Mode/Parameters:



- Enable Background wheel
- Set window Active
- Wheel Page Scroll
- Wheel Scroll lines

Choose wheel To Scroll and press the task button to set the speed.



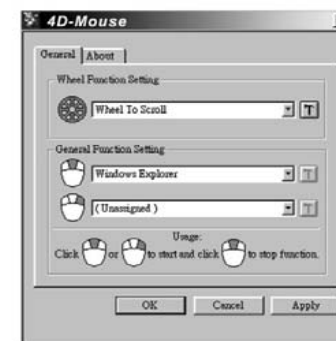
General Function Setting:



- * Press middle or right button to set the functions below.
- * Press middle or right button once to practice the functions.
- * To stop the function just press middle button.

Wheel Function Setting:

Choose wheel 4D and press the task button to view the window below.

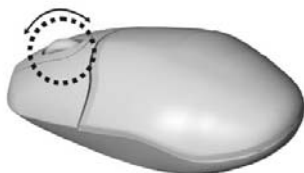


Installing "4D-mouse" Software

1. Start Windows 95/98/2000/NT4.0 and insert software diskette into drive A or B.
2. Click Start on the Taskbar and select Run.
3. From the Run dialog box, select (or type) A:\SETUP or B:\SETUP and click OK. Follow the on-screen instructions.
4. The "4D-mouse" software must be installed to use all the features of your 4D-mouse.



The mouse wheel also works like a button.



The mouse wheel simplifies scrolling.

Connect the Radio Receiver

1. Make sure the computer is turned off.
Caution: Plugging or unplugging cables to the computer's PS/2 port will damage the computer while the computer is running
2. Connect the receiver's cable to the computer's PS/2 or USB port.

Installing the Batteries

1. Remove the battery cover.
2. Insert two AAA alkaline batteries. Follow the diagram inside the battery compartment for correct battery orientation.
3. Replace cover.
4. When you are not using the mouse for long periods of time, remove the batteries.



15.105 Federal Communications Commission (FCC) Requirements, Part 15

This equipment has been tested and found to comply with the limits for a class B digital device, pursuant to part 15 of the FCC Rules. These limits are designed to provide reasonable protection against harmful interference in a residential installation.

This equipment generates, uses and can radiate radio frequency energy and, if not installed and used in accordance with the instructions, may cause harmful interference to radio communications. However, there is no guarantee that interference will not occur in a particular installation. If this equipment does cause harmful interference to radio or television reception, which can be determined by turning the equipment off and on, the user is encouraged to try to correct the interference by one or more of the following measures:

- Reorient or relocate the receiving antenna.
- Increase the separation between the equipment and receiver.
- Connect the equipment into an outlet on a circuit different from that to which the receiver is connected.
- Consult the dealer or an experienced radio/TV technician for help.

Regulatory information / Disclaimers

Installation and use of this Wireless Keyboard Mouse device must be in strict accordance with the instructions included in the user documentation provided with the product. Any changes or modifications (including the antennas) made to this device that are not expressly approved by the manufacturer may void the user's authority to operate the equipment. The manufacturer is not responsible for any radio or television interference caused by unauthorized modification of this device, or the substitution of the connecting cables and equipment other than manufacturer specified. It is the responsibility of the user to correct any interference caused by such unauthorized modification, substitution or attachment. Manufacturer and its authorized resellers or distributors will assume no liability for any damage or violation of government regulations arising from failing to comply with these guidelines.

Any changes or modifications (including the antennas) made to this device that are not expressly approved by the manufacturer may void the user's authority to operate the equipment.

This device complies with Part 15 of the FCC Rules. Operation is subject to the following two conditions:

- (1) This device may not cause harmful interference.
- (2) This device must accept any interference received, including interference that may cause undesired operation.