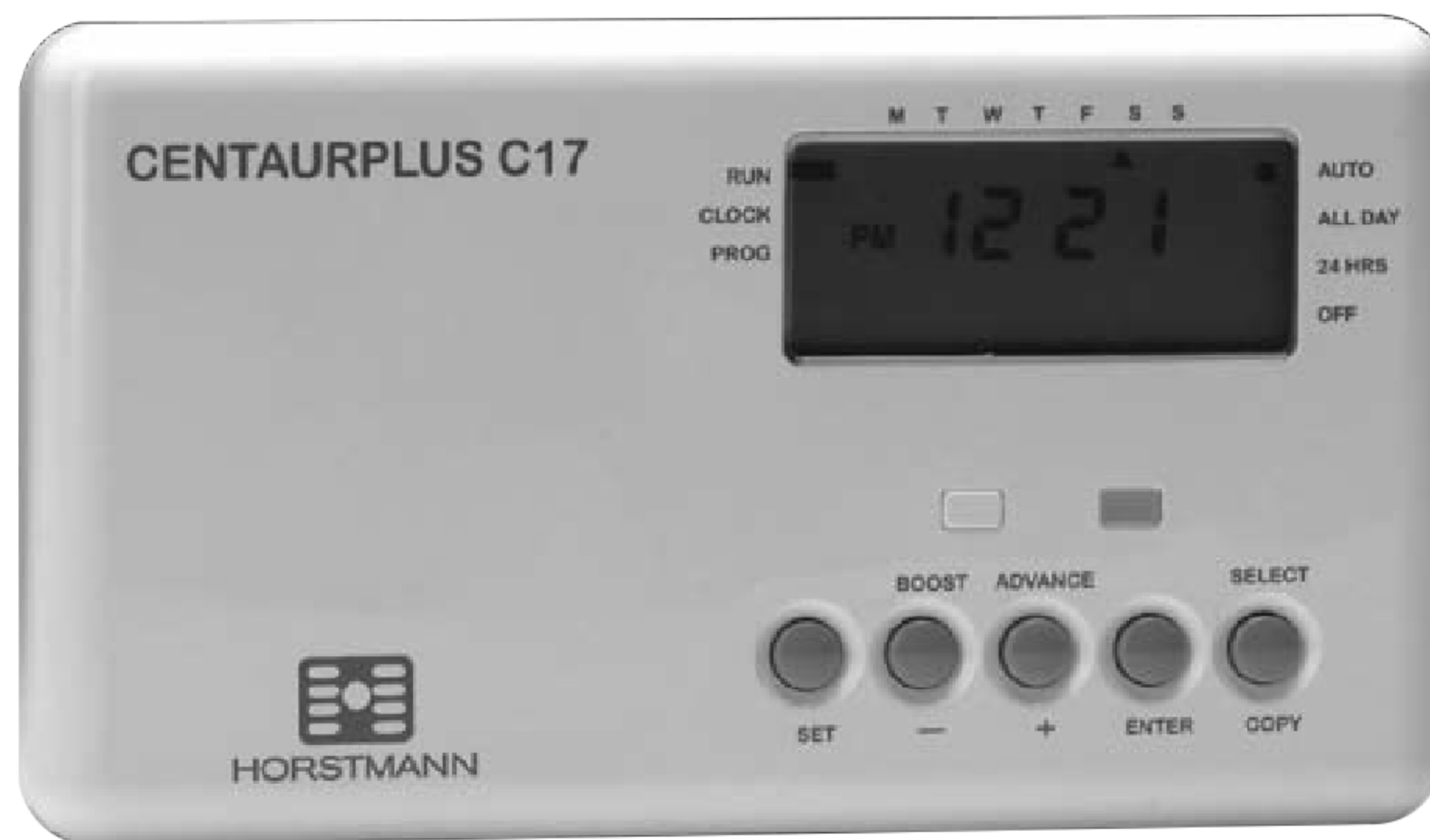


# HORSTMANN

## **CentaurPlus C17 User Operating Instructions**

### **Single Channel Timeswitch**

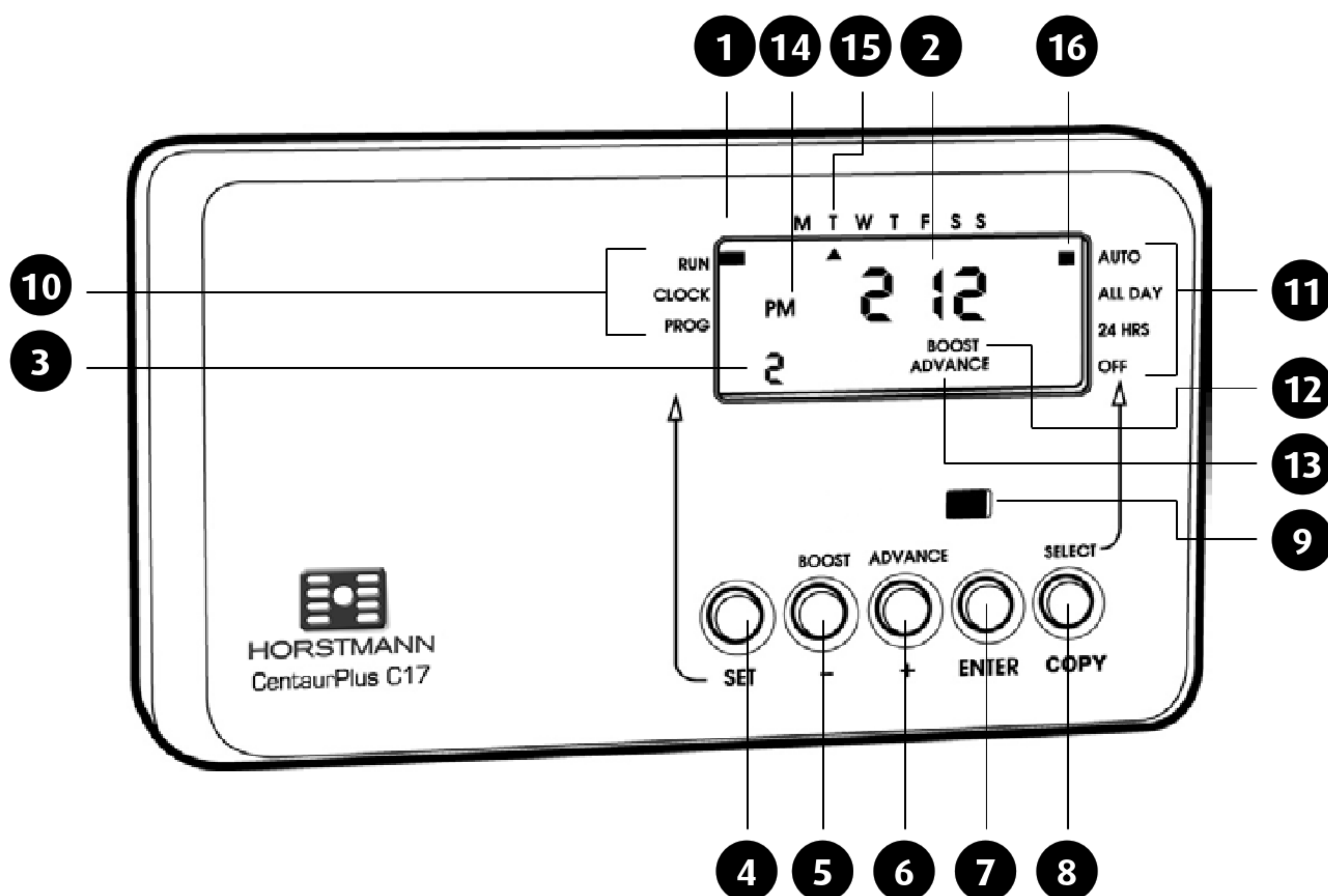


The Horstmann CentaurPlus C17 time switch will allow up to 3 ON/OFF settings per day for each day of the week and has a 1 hour manual boost and advance button to temporarily override current settings.

There is also a programming switch allowing permanent selection of:  
OFF/ON/AUTO/ALL DAY.

# The CentaurPlus C17 Timeswitch

The simple instructions contained in this user guide are designed to help with the programming and operation of the unit.



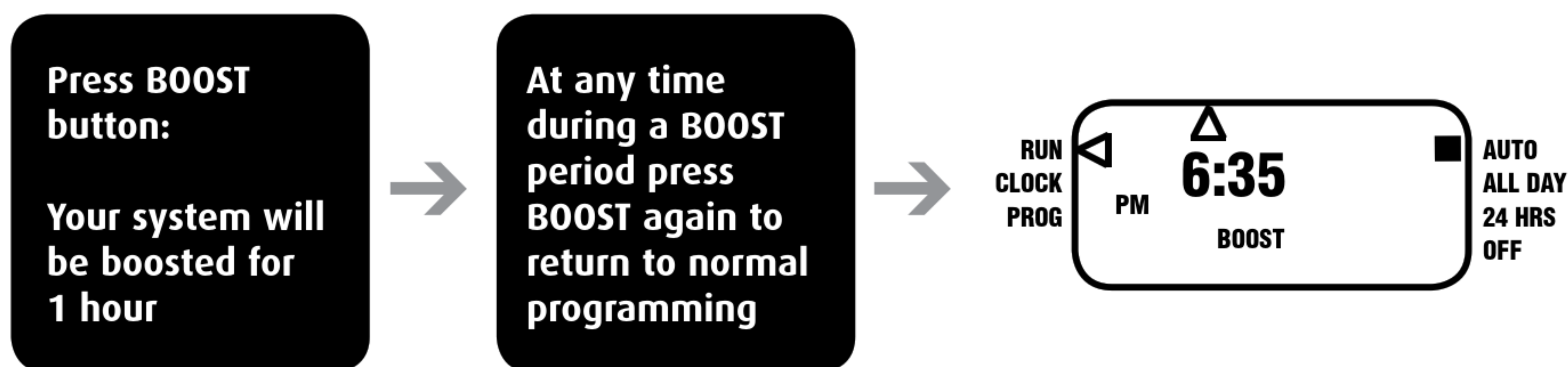
- 1 SET indicator - RUN is the normal position
- 2 Time of day
- 3 Switch period symbol
- 4 SET button
- 5 BOOST or adjust (-) button
- 6 ADVANCE or adjust (+) button
- 7 ENTER button
- 8 SELECT or COPY button
- 9 System ON indicator
- 10 SET positions
- 11 PROGRAMME positions
- 12 BOOST symbol
- 13 ADVANCE symbol
- 14 AM/PM symbol
- 15 Day of week indicator
- 16 PROGRAMME indicator



# Manual Overrides

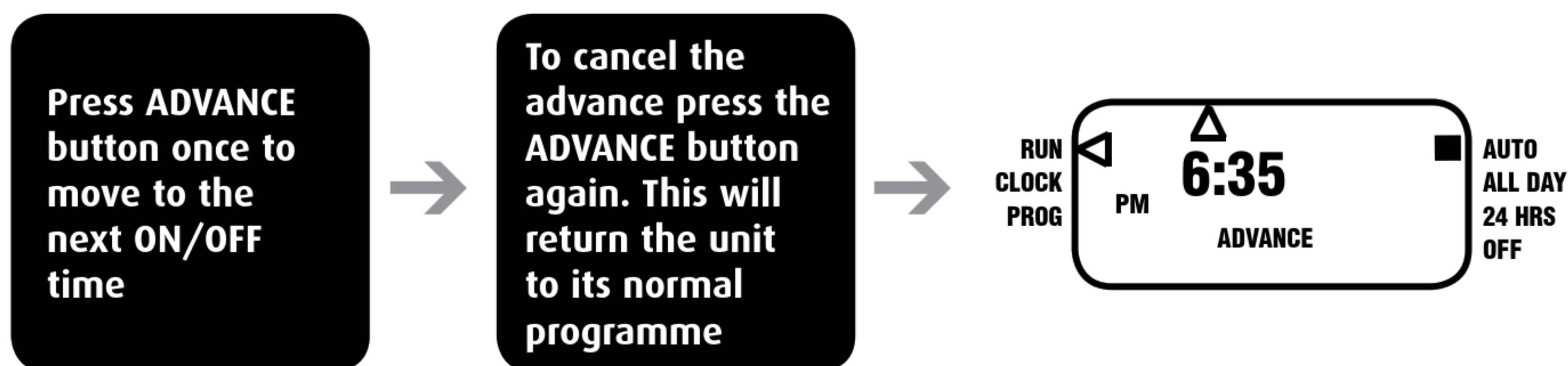
## BOOST FUNCTION - 1 HOUR TEMPORARY OVERRIDE

The boost facility will allow the user to boost the system which is currently 'OFF' for 1 hour. To indicate the boost being activated BOOST will be shown on the display for the duration of the boost period. The system ON indicator will also be illuminated.



## ADVANCE FUNCTION – BRINGS FORWARD THE NEXT ON OR OFF OPERATION

The advance facility will allow the user to advance the system to 'ON' when currently 'OFF' or switch the system 'OFF' when currently 'ON'. To indicate the advance feature being activated ADVANCE will be shown on the display until the next programme switching time. The system ON indicator will also be illuminated.



# Programme Override Facilities

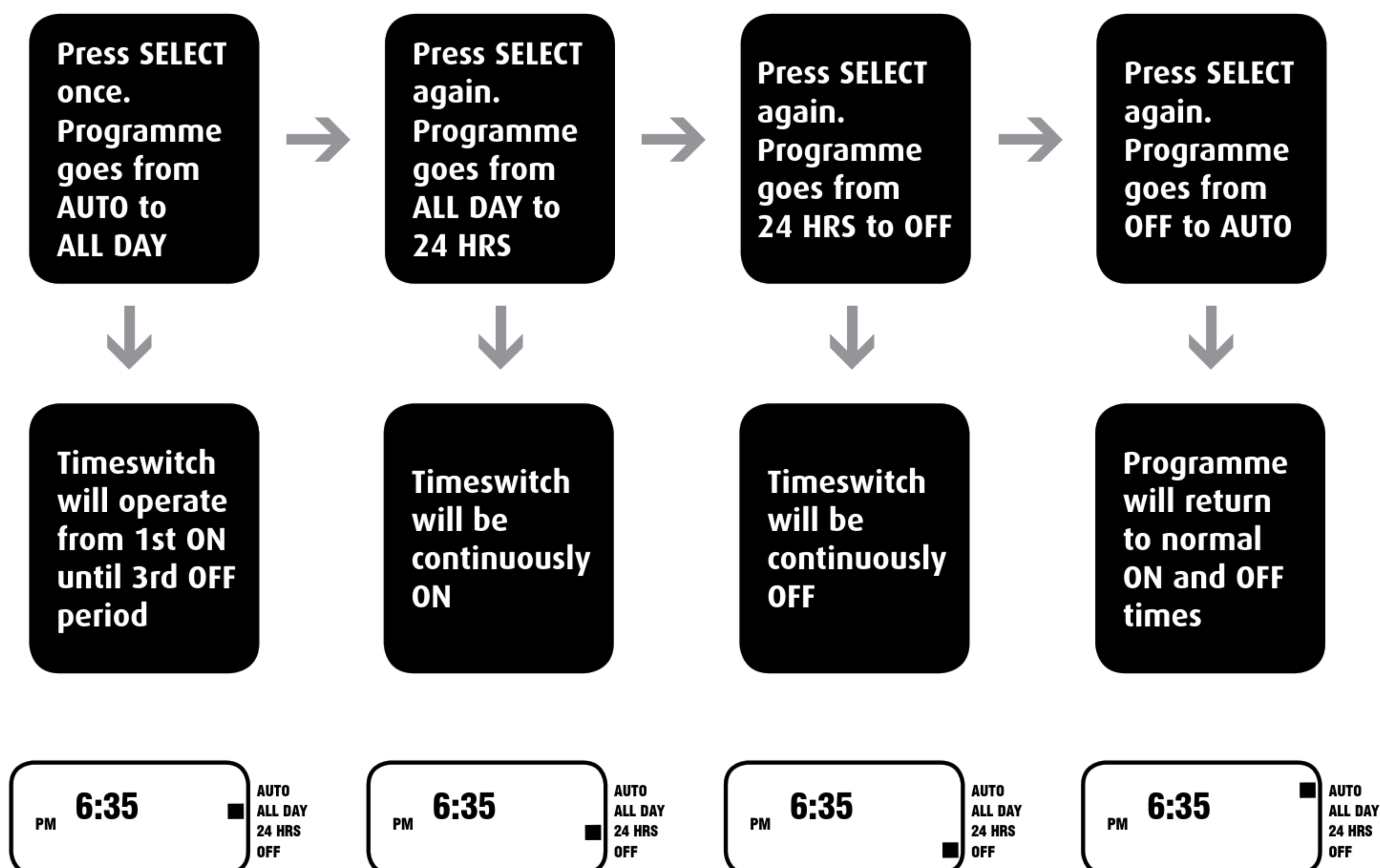
With the CentaurPlus C17 timeswitch operating in the normal running mode it is possible to alter the functionality of the programme by means of the SELECT button.

The options include;

- AUTO** - Timeswitch follows all programmed 'ON' and 'OFF' times.
- ALL DAY** - Timeswitch operates from 1st 'ON' time until 3rd 'OFF', ignoring all switching times in between.
- 24hrs** - Timeswitch will be constantly 'ON'.
- OFF** - Timeswitch will be constantly 'OFF', there is the ability to turn off the heating during the summer without altering the programme times. Boost is still available.

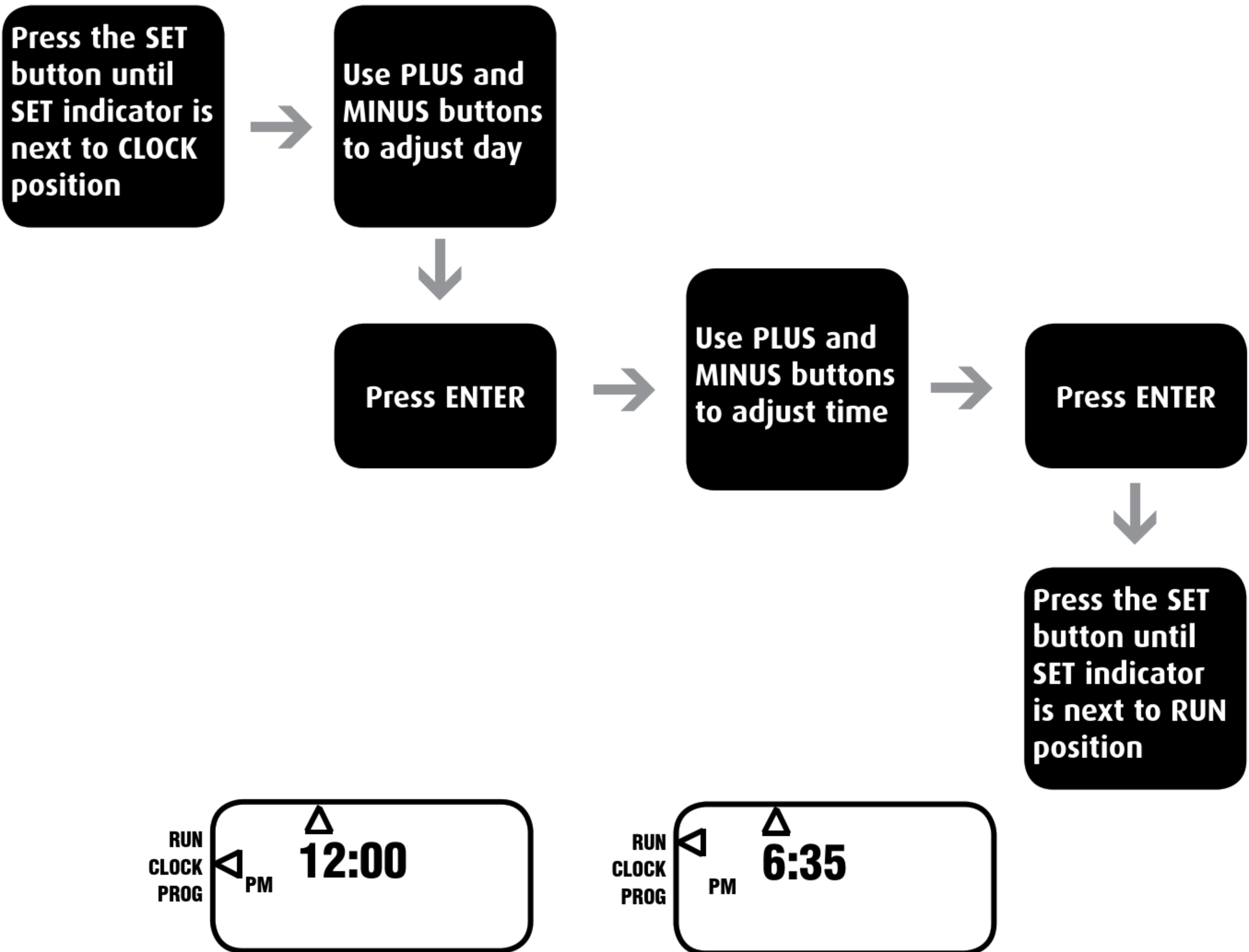
All of the settings above will be permanent, i.e. unaffected by programme times, until alteration by the user.

The diagram below illustrates how to alter the setting, it assumes that the programme is in the AUTO mode to begin with.



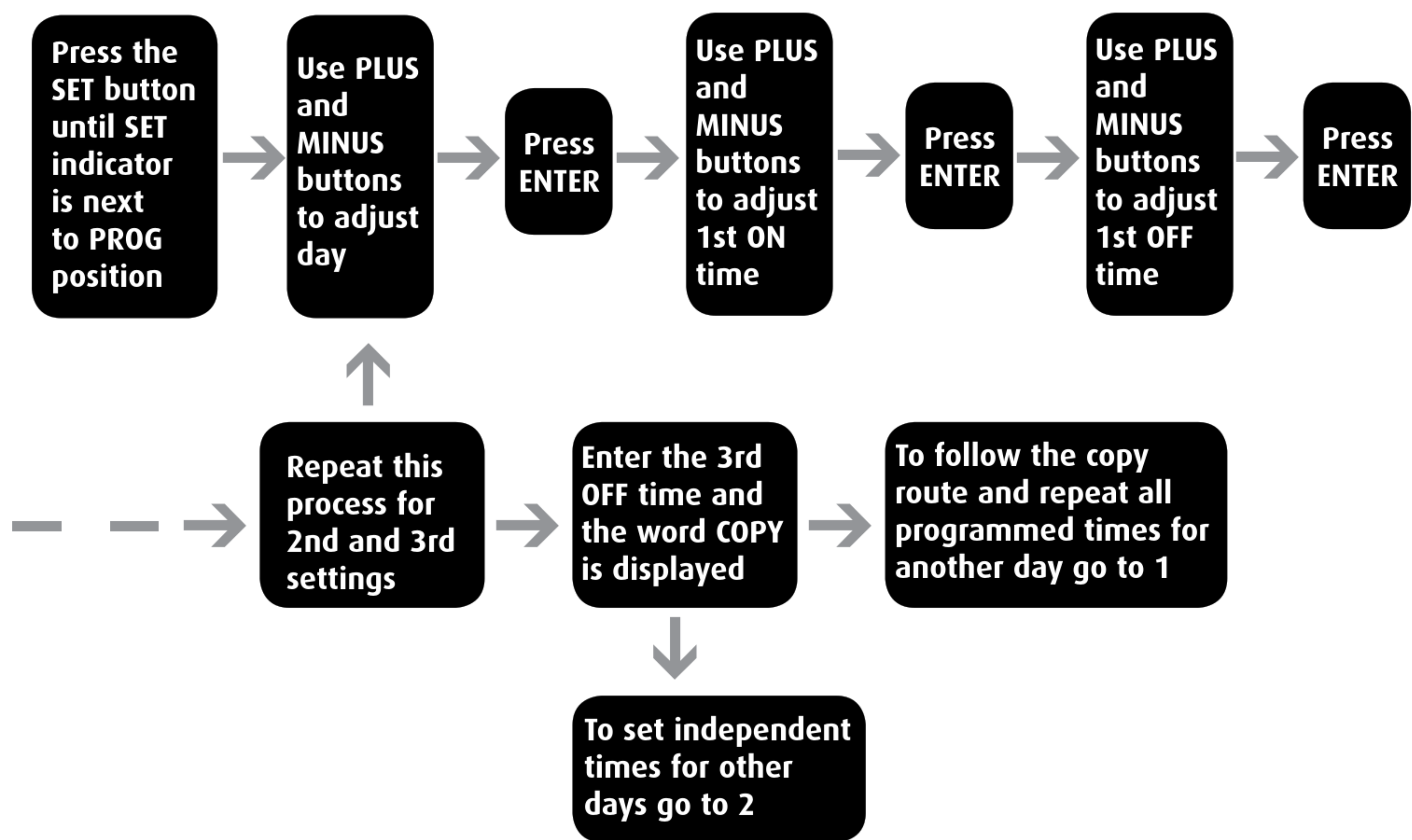


# Setting the Time of Day



# Setting the On and Off Times

To alter these settings please proceed as follows:-



- 1

Use the PLUS and MINUS buttons to select day required and press COPY. 'IN' is displayed to confirm the copy. Repeat for other days as required

→

To transfer to independent times for other days go to 2 or to finish programming press the SET button until the SET indicator is in the RUN position
- 2

Press ENTER. Use the plus and minus buttons to select the day required and press ENTER. Set 1st, 2nd and 3rd times as before. To repeat for other days go to 2, to copy go to 1

→

To finish programming press the SET button until the SET indicator is in the RUN position

## DEFAULT TIME SETTINGS

1st ON	1st OFF	2nd ON	2nd OFF	3rd ON	3rd OFF
6.30AM	8.30AM	12.00PM	12.00PM	4.30PM	10.30PM

The default time settings shown above are preset at the factory

NB. The factory default settings for the 2nd ON/OFF times are both set at 12:00pm (midday) which cancels this 'ON' period giving 2 ON/OFF periods for the day. If a midday 'ON' period is required set the 2nd ON and OFF times accordingly. If not press ENTER twice.



# Resetting the Programmer

Electronic equipment can in some circumstances be affected by electrical interference. If the programmer's display becomes frozen or scrambled; or if you wish to revert back to the default time settings please reset by pressing the SET and SELECT buttons together as shown below.

After initial installation it is advisable, before programming the CentaurPlus for the first time, to reset the unit. Resetting can only be achieved with the power 'ON' by pressing the SET and SELECT buttons together. This will return the programmer to the factory set default times.

**Press the SET and SELECT buttons together then release the buttons and the programmer will return to preset factory settings**



## General Information

### BATTERY

The programmer is fitted with a non-rechargeable, long life battery, which will maintain the programmed time settings for a minimum of ten months with the supply disconnected.

THIS SHOULD BE SUFFICIENT TO COVER POWER INTERRUPTIONS DURING THE LIFE OF THE UNIT. During power interruptions the display will be blank, after 3 days the current time of day will be lost. These measures are to prolong the battery life.

### SERVICE AND REPAIR

This programmer is NOT user serviceable. Please do not dismantle the unit.

In the unlikely event of a fault developing please refer to the RESETTING THE PROGRAMMER section of this user guide shown above. If this fails to resolve the problem please contact a local heating engineer or a qualified electrician.



## What is a programmer?

### ... an explanation for householders.

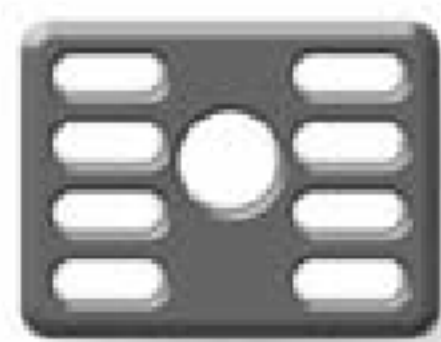
Programmers allow you to set 'On' and 'Off' time periods. Some models switch the central heating and domestic hot water on and off at the same time; while others allow the domestic hot water and heating to come on and go off at different times.

Set the 'On' and 'Off' time periods to suit your own lifestyle. On some programmers you must also set whether you want the heating and hot water to run continuously, run under the chosen 'On' and 'Off' heating periods, or be permanently off.

The time on the programmer must be correct. Some types have to be adjusted in Spring and Autumn at the changes between Greenwich Mean Time and British Summer Time. You may be able to temporarily adjust the heating programme, for example, 'Override', 'Advance' or 'Boost'. These are explained in the manufacturer's instructions.

The heating will not work if the room thermostat has switched the heating off. And, if you have a hot-water cylinder, the water heating will not work if the cylinder thermostat detects that the hot water has reached the correct temperature.

**The above explanation also applies to your timeswitch, which operates as a single circuit programmer.**



**HORSTMANN**

Email: [sales@horstmann.co.uk](mailto:sales@horstmann.co.uk)  
Website: [www.horstmann.co.uk](http://www.horstmann.co.uk)

Horstmann Controls Limited, Bristol BS4 1UP

