



versatile



high-speed

data sheet



hp color LaserJet 5500 series printers

5500 • 5500n • 5500dn • 5500dtn • 5500hdn

Add high-speed, wide-format color laser printing to your office workgroup with the affordable HP Color LaserJet 5500 series printers. Easy-to-use and flexible to fit any office, these printers create high-quality color documents as quickly as black-and-white. Designed for simplicity, this printer series is as easy-to-use and maintain as any HP LaserJet monochrome printer, and can be upgraded for robust networking and increased media flexibility.

fast color

- meet the real-world performance requirements for high-resolution color with 600-dpi printing and hp ImageREt 2400-dpi technology for all your professional business documents—print color as fast as black and white with 21 pages per minute (letter-sized pages) with the high-performance, inline engine, 400 MHz processor, and a minimum of 96 MB RAM for a fast, 18-second first-page-out
- produce professional spreadsheets and other wide-format business documents—prints media just over 12 x 18 inches (312 x 470 mm)
- vibrant image quality makes your presentations stand out—achieve high-resolution color with 600-dpi printing and hp ImageREt 2400-dpi technology and enjoy enhanced print quality with smoother color transitions, sharper black text, and sharper images with the offset press technologies, such as adaptive half-toning and trapping
- streamline your business workflow—using the printer's hard disk (standard on 5500hdn model) which enables multiple original printing (mopying), secure printing, and many other document management solutions

unmatched simplicity

- hp makes maintenance and troubleshooting simple—a graphical control panel, easy front access to the printer, and clear labeling make print cartridge installation and troubleshooting practically as simple as for a monochrome hp LaserJet printer
- reduce time spent refilling paper—added media flexibility includes additional 500-sheet paper trays that bring standard input capacity to 1,600 sheets
- trouble-free maintenance—simple paper path design and essentially only four supplies mean fewer and easier interventions
- low cost of ownership and operation—via long-life maintenance kits, smart printing supplies, and low intervention rates

robust networking

- best-in-class networking—robust hp jetdirect Fast Ethernet internal print server for trouble-free high-performance printer sharing
- expandable hp jetdirect networking options allow workgroups to prepare for mobile environments and to access e-services—add hp jetdirect wireless 802.11b networking or other connectivity options with the open EIO slots
- simple to manage over your network—using hp web jetadmin printer management software or via the embedded Web server

HP printing and imaging systems help you create powerful, professional communications easily. Printers, supplies, accessories, and services are designed together to work together and invented to meet your business needs.

hp color LaserJet 5500 series printers

hp color LaserJet 5500hdn shown

graphical control panel for ease-of-use, smart printing supplies maintenance, and convenience

four high-capacity all-in-one toner cartridges (up to 13,000 sheets black, up to 12,000 sheets color)

simple front door access allows you to easily change printer cartridges and perform routine maintenance

best-in-class hp jetdirect 615n Fast Ethernet EIO internal print server

convenient printer stand



fast color printing— 21 pages per minute with 18 second first page out

100-sheet multipurpose tray

500-sheet feeder tray

two additional 500-sheet trays for media capacity of 1,600 sheets

automatic two-sided color printing— full-color, two-sided brochures print easily

prints on a wide variety of media types and sizes— up to 12 by 18 inch widths for 11 by 17 inch full bleed prints

advanced color print cartridge technology

improved chemical toner formula

- ensures uniform distribution of color and reliable fusing
- wider range of colors (gamut) and richer appearance
- crisp black text and sharp edges
- consistent print quality over the life of the cartridge

hp smart printing supplies features

- status-at-a-glance and convenient supplies alerts
- ability to quickly order via the Internet when supplies are low
- hp smart printing technology monitors and adjusts print cartridge characteristics to ensure consistent print quality throughout cartridge life

easy to install and maintain

- essentially only four supplies to replace
- easy installation and removal of print cartridges
- long-life image fuser (estimated 150,000-page yield) and transfer kit (estimated 120,000-page yield)

hp color LaserJet 5500 series printers at a glance



hp color LaserJet 5500

- 400 MHz processor
 - 96 MB RAM (expandable to 416 MB)
 - 100-sheet multipurpose tray
 - 500-sheet feeder tray (media capacity 600 sheets)
- includes three open EIO slots



hp color LaserJet 5500n all of the features of the 5500 model plus:

- hp jetdirect 615n Fast Ethernet EIO internal print server
- includes two open EIO slots



hp color LaserJet 5500dn all of the features of the 5500n model plus:

- automatic two-sided printing
- includes two open EIO slots



hp color LaserJet 5500dtn all of the features of the 5500dn model plus:

- 160 MB RAM (expandable to 416 MB)
 - second 500-sheet feeder tray (media capacity 1,100 sheets) and printer stand
- includes two open EIO slots



hp color LaserJet 5500hdn all of the features of the 5500dtn model plus:

- hard disk drive—facilitates fast multiple-original processing and storing of templates and forms
 - third 500-sheet feeder tray (media capacity 1,600 sheets)
- includes one open EIO slot

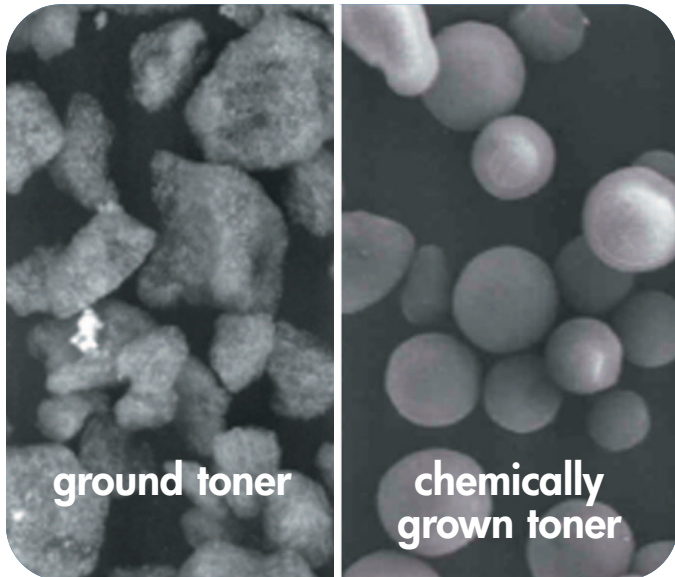
high-performance color printing

Whether printing brochures or spreadsheets, newsletters or business presentations, with the HP Color LaserJet 5500 series printers you are guaranteed high-quality documents while meeting all your time-critical deadlines through in-house printing. Featuring inline printing technology—using a “direct to page process”—the HP Color LaserJet 5500 transfers toner directly to your media ensuring exceptional print quality and color printing at the same speed as black. And with best-in-class HP Jetdirect wired and wireless print servers, the printers can be placed anywhere in networked offices so that entire workgroups can access fast, wide-format color printing.

exceptional color output quality

HP has designed the HP Color LaserJet 5500 and HP smart printing supplies so that whether you are sending RGB or CMYK files, the printer is automated and configured to supply:

- image detail
 - 8 bit vs. 1–2 bit contone
 - hp’s technology—four times the data delivers superior detail
- color mapping
 - family similarity
- print consistency
 - by product design, closed loop controls, and hp smart printing supplies
- sharp color transitions
 - trapping
- sharp text and lines
 - adaptive halftoning



advanced toner technology

- all-in-one print cartridge
- chemically grown toner
- uniform and small toner particles that enable the best print quality
- integrated release agent to enable “oil-less” fusing
- cost efficient

what does trapping do?

- eliminates color plane misregistration
- eliminates transitions between halftones



trapping=overprint along edges of knock-out

Ma

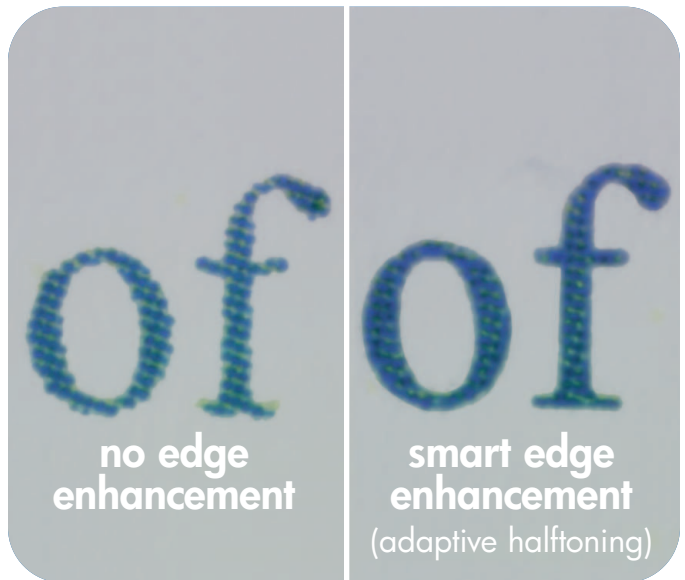
without trapping

Ma

with trapping

precise adjacent colors—trapping

- eliminates color plane misregistration
- eliminates transitions between halftones
- automatic color plane registration
- automatic corrections built-in



smart edge enhancement (adaptive halftoning)

- extends beyond solids to light colored text
- dynamic algorithm identifies edges and applies special halftoning to sharpen edges

smart operation made easy

The HP Color LaserJet 5500 series printers are designed to operate both efficiently and intuitively.

- control panel displays text and animated graphics simultaneously with an intuitive user interface
- front panel provides convenient access to the end user-replaceable supplies
- virtually eliminates printer downtime with genuine HP smart printing supplies that enable status monitoring, proactive alert messages, Internet-enabled supplies ordering, and convenient remote troubleshooting

technical specifications hp color LaserJet 5500 series	hp color LaserJet 5500 C9656A	hp color LaserJet 5500n C7131A	hp color LaserJet 5500dn C9657A	hp color LaserJet 5500dtn C9658A	hp color LaserJet 5500hdn C9659A
print speed ¹	21 pages per minute, letter-size documents ¹ exact speed varies depending on the system configuration, software application, driver and document complexity				
first page out	18 seconds (Ready state), 45 seconds (powersave), 2 minutes (cold)				
processor	400 MHz				
memory	96 MB standard, expandable to 416 MB			160 MB standard, expandable to 416 MB	
duty cycle, monthly	120,000 pages per month				
media handling					
paper trays, std	100-sheet multipurpose, 500-sheet feeder	100-sheet multipurpose, 500-sheet feeder automatic two-sided printing	100-sheet multipurpose, two 500-sheet feeder trays automatic two-sided printing	100-sheet multipurpose, three 500-sheet feeder trays automatic two-sided printing	
input capacity, max	600 sheets		1,100 sheets		1,600 sheets
output capacity, std	250 sheets				
media					
sizes	letter, legal, executive, ledger, envelopes (Monarch, Com 10) (A3, A4, JIS, B5, A5, C5/B5/DL envelopes), custom; Tray 1: custom sizes, 3 by 5 in to 12.3 by 18.5 in; Tray 2, 3, and 4: 5 by 8 in to 11 by 17 in				
types	paper (plain, glossy, film, recycled), envelopes, transparencies, labels, cardstock, tough paper				
print technology	600 dpi resolution with hp ImageREt 2400				
connectivity, std	IEEE1284-compliant bidirectional parallel port, Fast Infrared (FIR) port, 3 open EIO slots	IEEE1284-compliant bidirectional parallel port, Fast Infrared (FIR) port, hp jetdirect 615n print server in EIO slot, 2 open EIO slots		IEEE1284-compliant bidirectional parallel port, Fast Infrared (FIR) port, hp jetdirect 615n print server in EIO slot, hard disk drive in EIO slot, 1 open EIO slot	
print languages	HP PCL 6, HP PCL 5c, PostScript® 3 emulation				
dimensions (w by d by h)	22.7 by 27.7 by 25.2 in (577 by 704 by 640 mm)			24.8 by 27.7 by 38.8 in (630 by 704 by 986 mm)	
weight	132 lb (60 kg)		250 lb (113.56 kg)		283 lb (128.56 kg)

ordering information

number	description
C9656A	HP Color LaserJet 5500 printer
C7131A	HP Color LaserJet 5500n printer
C9657A	HP Color LaserJet 5500dn printer
C9658A	HP Color LaserJet 5500dtn printer
C9659A	HP Color LaserJet 5500hdn printer
service and support	
H5549A/E	Next Day on-site three year
H2691A/E	Same-day on-site four hour, three year
H2044A/E	24 x 7 Same-day four hour, three year
H4515A/E	Installation service
H2872A/E	Standard and network installation
accessories	
C7130A	500-sheet input tray
C9669A	Printer stand
J6054B	Printer hard disk
C9734A	Image transfer kit (120K page life)*
C9735A	Image fuser kit, 110v (150K page life)*
C9736A	Image fuser kit, 220v (150K page life)*
supplies	
C9730A	HP Black print cartridge (13K yield)**
C9731A	HP Cyan print cartridge (12K yield)**
C9732A	HP Yellow print cartridge (12K yield)**
C9733A	HP Magenta print cartridge (12K yield)**
media	
C4179A	HP Soft gloss Laser paper, 200 sheets, 32 lb, letter
Q2415A	HP Soft gloss Laser paper, 500 sheets, 28 lb, letter
Q2416A	HP Soft gloss Laser paper, 500 sheets, 28 lb, 11 X 17 inch
Q2419A	HP High gloss Laser paper, 200 sheets, 32 lb, letter
Q2420A	HP High gloss Laser paper, 200 sheets, 32 lb, 11 X 17 inch
Q1298A	HP LaserJet tough paper, 50 sheets, letter
HPJ1120	HP Premium choice LaserJet paper, 500 sheets, 32 lb, letter
HPJ115R	HP Premium choice LaserJet paper, 250 sheets, 200 gsm, 11 X 17 inch
Q2413A	HP Premium cover paper, 100 sheets, 75 lb, letter
C2934A	HP Color LaserJet transparencies, 50 sheets, letter
HPJ1124	HP LaserJet paper, 500 sheets, 24 lb, letter
HPJ1424	HP LaserJet paper, 500 sheets, 24 lb, legal
HPJ1724	HP LaserJet paper, 500 sheets, 24 lb, 11 X 17 inch
HPJ245R	HP Color Laser paper, 500 sheets, 24 lb, letter
HPJ2417	HP Color Laser paper, 500 sheets, 24 lb, 11 X 17 inch
HPJ285R	HP Color Laser paper, 500 sheets, 28 lb, letter
HPJ113H	HP LaserJet paper, 3 hole, 500 sheets, 24 lb, letter
memory	
C7848A	64 MB SDRAM DIMM
C7850A	128 MB SDRAM DIMM
C9653A	256 MB SDRAM DIMM
C4287A	4 MB Flash DIMM
interface and cables	
C2946A	Parallel cable, 3-meter IEEE 1284 cable with c type connector
922155	Macintosh DIN-8 printer cable
92215N	HP LocalTalk cable kit
C4103A	HP Fast Infrared receiver
network	
J6058A	HP Jetdirect 680n 802.11b wireless internal print server
J6057A	HP Jetdirect 615n Fast Ethernet (10/100Base-TX) internal print server
J4167A	HP Jetdirect 610 Token Ring print server
J4135A	HP Jetdirect connectivity card for USB, Serial, and LocalTalk connections

* Estimated life will depend on job parameters. (E: coverage, type and length)

** Based upon approximately 5% percent coverage.

operating systems supported

Microsoft® Windows 95, 98, NT® 4.0, 2000, Me, XP, Mac® OS 8.6 and later, OS2

network compatibility

(via hp jetdirect print servers) Microsoft Windows 95, 98, NT, 4.0, 2000 XP, XP 64-bit, Novell NetWare 3.2, 4.2, 5.x, 6, Red Hat Linux 6.x, and later, SuSE Linux 6.x, and later, HP-UX 10.20, 11.x, Solaris 2.5x, 2.6, 7, 8, (SPARC systems only), IBM AIX 3.2.5 and later, MPE-iX, Mac OS 8.6 and later

font capabilities

80 TrueType internal scalable in PCL, 80 TrueType internal scalable in PS

environmental ranges

Operating temperature: 50 to 81° F (15 to 27° C)

Storage temperature: 32 to 95° F (0 to 35° C)

Operating humidity: 10 to 70% RH

Storage humidity: 10 to 95% RH

acoustics

Noise level per ISO 9296

Sound power: LWAd 50 dB(A) Powersave, 65 dB(A) printing

Sound pressure: operating position per ISO 7779: LpAm 49 dB(A) printing, 33 dB(A) standby

power requirements

Source: input voltage 100 to 127 VAC (-10%/+6%) 50/60 Hz (±2 Hz); input voltage

220 to 240 VAC (-10%/+6%) 50/60 Hz (±2 Hz)

power consumption

Printing: minimum 556, maximum 592 (110/220 volts)

Standby: minimum 48.5, maximum 54.3 (110/220 volts)

Powersave: 0.15

ENERGY STAR® compliant

warranty

One-year on-site warranty

what's in the box

Printer, four LaserJet print cartridges (1 each: black, cyan, magenta, yellow), software and user guide and CD ROM, Getting Started Guide, power cord, HP Jetdirect 615n (EIO) 10/100Base-T internal print server, automatic duplexer printing accessory (CUJ5500dn/dtn/hdn), two 500-sheet input trays (CUJ5500dn), stand (CUJ5500dn/hdn), hard disk (CUJ5500hdn), three 500-sheet input trays (CUJ5500hdn).

For more information on the HP Color LaserJet 5500 series printers, visit our Web site at www.hp.com and click on products and services. Here you will find information on products, supplies, and accessories for all your computing needs. HP printers, personal computers, supplies, and accessories are available at authorized HP resellers worldwide.

HP PCs use genuine Windows Operating Systems

www.microsoft.com/piracy/howtotell

For more information

Product: Visit www.hp.com

Purchase: HP business solutions, products and supplies can be purchased at your local

HP partner (www.hp.com/go/locator), or bought directly from HP at www.buy.hp.com or 800-613-2222.

Finance: HP finance plans provide all the benefits of new technology without the risk or cost of ownership.

For details, call toll-free 888-999-HPTF (4783).

Accessibility: HP is committed to providing products and services that are accessible to people with disabilities.

For more information, please visit www.hp.com/accessibility or call 888-259-5707.

ENERGY STAR is a U.S. registered service mark of the United States Environmental Protection Agency. As an ENERGY STAR partner, HP has determined that this product meets the guidelines for energy efficiency. Adobe, the Adobe logo, and Adobe PostScript 3 are either registered trademarks or trademarks of Adobe Systems Incorporated in the USA, and other countries. Apple, AppleTalk, and Macintosh are trademarks of Apple Computer, Inc. registered in the USA, and other countries. Microsoft, Windows, and Windows NT are registered trademarks of Microsoft Corporation in the USA, and other countries. UNIX is a registered trademark of the Open Group in the USA, and other countries. All other brand and product names are trademarks or registered trademarks of their respective companies. The information contained in this document is subject to change without notice. HP makes no warranty of any kind with respect to this information. HP specifically disclaims the implied warranty of merchantability and fitness for a particular purpose. HP shall not be liable for any direct, indirect, incidental, consequential, or other damage alleged in connection with the furnishing or use of this information.



5981-1007ENUC

© Hewlett-Packard Company 2002