



Software Guide

Compaq Notebook Series

Document Part Number: 272631-001

June 2002

This guide provides settings and procedures for managing notebook power and security. It also provides instructions for obtaining system information and using diagnostic utilities to help detect, solve, and prevent problems.

© 2002 Compaq Information Technologies Group, L.P.

Compaq, the Compaq logo, Evo, Presario, RomPaq, and SoftPaq are trademarks of Compaq Information Technologies Group, L.P. in the U.S. and/or other countries. Microsoft and Windows are trademarks of Microsoft Corporation in the U.S. and/or other countries. All other product names mentioned herein may be trademarks of their respective companies.

Compaq shall not be liable for technical or editorial errors or omissions contained herein. The information is provided "as is" without warranty of any kind and is subject to change without notice. The warranties for Compaq products are set forth in the express limited warranty statements accompanying such products. Nothing herein should be construed as constituting an additional warranty.

Software Guide

First Edition June 2002

Reference Number: N1005/900

Document Part Number: 272631-001

Contents

1 Power Management

Selecting a Power Source	1-1
Using Standby and Hibernation	1-2
Standby	1-2
Hibernation	1-2
Selecting Standby, Hibernation or Shutdown	1-3
Using Hibernation or Standby While Playing Media	1-3
Standby, Hibernation and Shutdown Procedures	1-4
Identifying Power Controls and Indicators	1-4
Using the Default Power Procedures	1-5
Setting Power Procedure Preferences	1-6
Managing Low-Battery Conditions	1-7
Identifying a Low-Battery Condition	1-7
Identifying a Critical Low-Battery Condition	1-8
Resolving Low-Battery Conditions	1-9
Charging a Battery Pack	1-10
Monitoring the Charge in a Battery Pack	1-11
Obtaining Accurate Charge Information	1-11
Displaying Charge Information on the Screen	1-11
Battery Conservation Procedures and Settings	1-12

2 Security Management

Security Features Quick Reference	2-1
If You Forget a Password	2-2
Using a Power-On Password	2-2
Setting, Changing or Deleting a Power-On Password	2-2
Entering a Power-On Password	2-3

Using a Setup Password	2-4
Using DriveLock	2-6
Protecting a Hard Drive with DriveLock	2-6
Accessing a Protected Hard Drive.	2-7
Changing a DriveLock Password or	
Removing DriveLock Protection from a Drive	2-8
Using Device Security	2-9
Setting Device Security	2-9
Connecting an Optional Cable Lock	2-10

3 Software Updates and Restorations

Updating Software	3-1
Preparing for a Software Update	3-1
Accessing Notebook Model Information	3-1
Accessing Software Updates	3-2
Updating Software from the Internet.	3-2
Downloading and Installing a SoftPaq	3-3
Restoring Software.	3-4

4 Setup Utilities and Diagnostics

Selecting the Setup Utility	4-1
Using the Setup Utility.	4-2
Selecting from the Main Screen	4-3
Selecting from the Advanced Screen.	4-4
Selecting from the Security Screen	4-5
Selecting from the Exit Screen	4-6
Using Compaq Diagnostics for Windows	4-6
Installing Compaq Diagnostics	4-7
Accessing Compaq Diagnostics	4-7
Obtaining, Saving or Printing	
Configuration Information.	4-7
Obtaining, Saving or Printing	
Diagnostic Test Information	4-8

Index

Power Management

Selecting a Power Source

Any supported power source can be used to work in most software applications, but some tasks require the specific power sources described in the following table.

Task	Power Source
Work in a software application.	<ul style="list-style-type: none">■ Charged battery pack in the notebook. or■ External power supplied through one of the following devices:<ul style="list-style-type: none">❖ AC Adapter❖ Optional Aircraft Power Adapter❖ Optional Automobile Power Adapter/Charger
Charge or calibrate a primary or external battery pack.	External power supplied through the AC Adapter.
Install or modify system software.	External power supplied through the AC Adapter.

Using Standby and Hibernation

Standby and Hibernation are energy-saving features that conserve power and reduce startup time. They can be initiated by you or by the system.

Standby

Standby in the Microsoft Windows XP and Microsoft Windows XP Home operating systems reduces power to system components that are not being used. When Standby is initiated, your work is saved in RAM (random access memory) and the screen is cleared. When you exit Standby, your work returns to the screen where you left off.

Hibernation

Hibernation saves all information in RAM to a hibernation file on the hard drive, then shuts down the notebook. When you exit Hibernation, your work returns to the screen where you left off.

If a power-on password is set, the password must be entered to exit Hibernation.

Hibernation is enabled by default, but can be disabled (usually to save space on the hard drive). Disabling Hibernation is not recommended. When Hibernation is disabled, system-initiated Hibernation cannot save your work if the notebook reaches a critical low-battery condition while it is on or in Standby.

To verify that Hibernation is enabled, select Start > Control Panel > Performance and Maintenance > Power Options icon. Select the Hibernate tab, then ensure that the Enable Hibernation check box is selected.

Selecting Standby, Hibernation or Shutdown

If you plan to resume shortly—Initiate Standby. Standby clears the screen, uses less power than leaving the notebook on, and your work returns instantly to the screen when you exit Standby. A fully charged new battery pack can support Standby for at least two days. A battery pack that has been frequently charged and discharged will support Standby for less time.

If you plan to resume within one week—Initiate Hibernation. Hibernation clears the screen, saves your work to the hard drive, and uses much less power than Standby. Returning to work saved in Hibernation takes longer than returning to work saved in Standby, but is faster than returning to your place manually after restarting the notebook. A fully charged battery pack supports Hibernation indefinitely.

If the notebook will be disconnected from external power for more than one week—Recharge the battery pack before using it to run the notebook.

Using Hibernation or Standby While Playing Media



CAUTION: To prevent possible video degradation and loss of audio or video playback functionality, do not initiate Standby or Hibernation while playing media.

If you are playing a medium in an optional drive, turn off the medium before initiating Standby or Hibernation.

If Standby or Hibernation is accidentally initiated while a medium is playing:

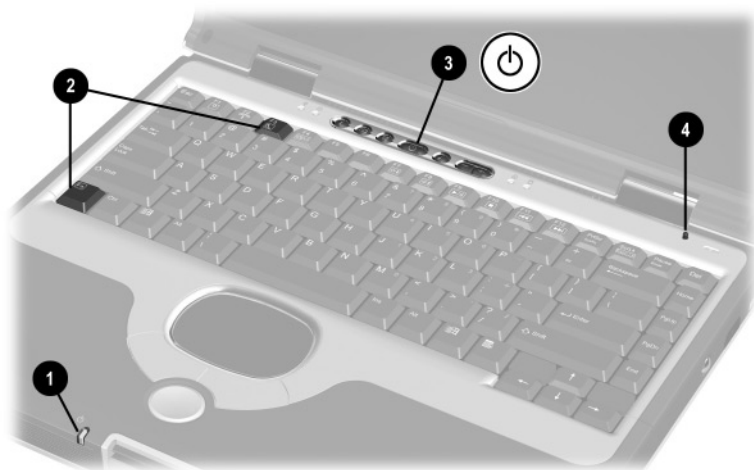
1. Exit Standby or Hibernation.
2. Restart the notebook.

Standby, Hibernation and Shutdown Procedures

Identifying Power Controls and Indicators

Standby, Hibernation, and shutdown procedures use the following light and controls:

- ❶ Power/standby light
- ❷ **Fn+F3** hotkeys (default Standby)
- ❸ Power button
- ❹ Display switch



Identifying power controls and indicators

Using the Default Power Procedures

The following table describes the default procedures for manually turning the notebook on and off, for manually initiating or exiting Standby or Hibernation, and for turning off the display when the notebook is closed while it is on.

You can assign different functions to the power button and display switch. For instructions, see “Setting Power Procedure Preferences” in this chapter.

Task	Procedure	Result
Turn the notebook on from shutdown.	Press the power button.	<ul style="list-style-type: none">■ Power/standby light turns on.■ Operating system loads.
Shut down the notebook.	Shut down the notebook as directed by your operating system documentation.	<ul style="list-style-type: none">■ Operating system closes.■ Power/standby light turns off.■ Computer turns off.
Turn off the display when the notebook is closed while it is on.	Close the notebook.	Closing the notebook activates the display switch, which turns off the display.
Initiate Standby.	Press Fn+F3 hotkeys. or Select Start > Turn Off Computer > Stand By.	<ul style="list-style-type: none">■ Power/standby light blinks.■ Screen clears.■ Your work is saved in system memory.

Task	Procedure	Result
Exit Standby.	Press the power button.	<ul style="list-style-type: none">■ Power/standby light turns on.■ Your work returns to the screen.
Initiate Hibernation.	Assign this function as instructed in “Setting Power Procedure Preferences” in this chapter.	<ul style="list-style-type: none">■ Power/standby light turns off.■ Screen clears.■ Your work is saved to the hard drive and the notebook turns off.
Exit Hibernation.	Press the power button.	<ul style="list-style-type: none">■ Power/standby light turns on.■ Your work returns to the screen.

Setting Power Procedure Preferences

To access the settings that change the functions of the power button and display switch, select **Start > Control Panel > Performance and Maintenance > Power Options icon > Advanced tab**.

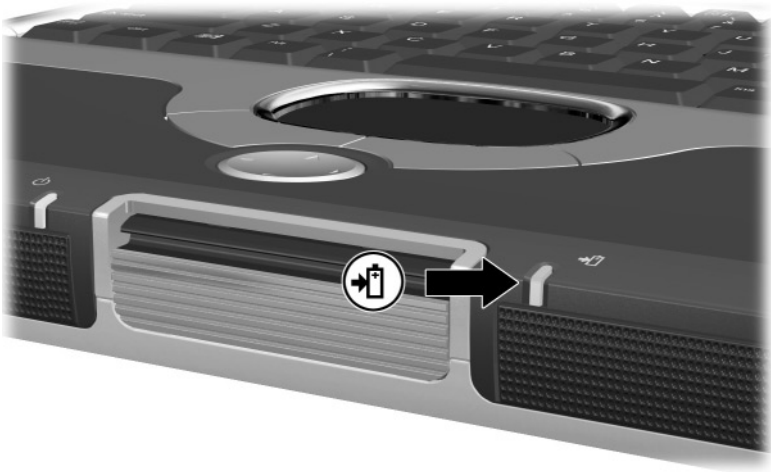
The initiate Hibernation setting is available only if Hibernation is enabled. Hibernation is enabled by default. To verify that Hibernation is enabled, select **Start > Control Panel > Performance and Maintenance > Power Options icon**. Select the **Hibernate** tab, then ensure that the **Enable Hibernation** check box is selected.

For more information about power options settings, refer to your operating system documentation.

Managing Low-Battery Conditions

Identifying a Low-Battery Condition

When the battery pack reaches a low-battery condition, the system beeps several times and the battery light blinks.



Identifying the battery light

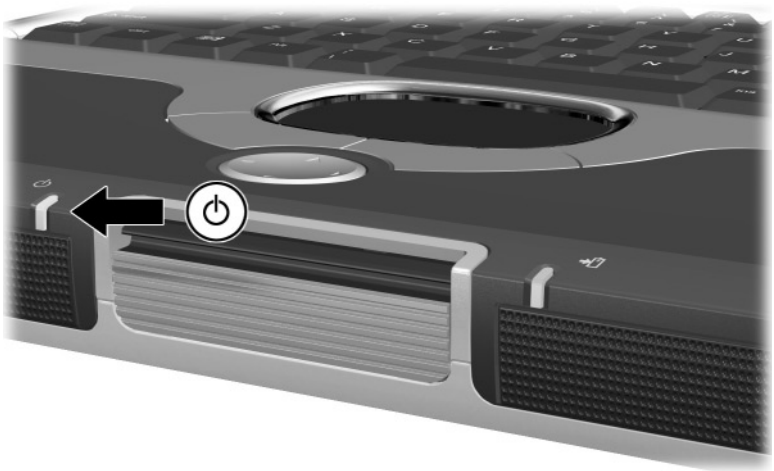
Identifying a Critical Low-Battery Condition

If a low-battery condition is not resolved, the notebook enters a *critical* low-battery condition. In a critical low-battery condition:

- If Hibernation is enabled and the notebook is on or in Standby, the notebook then initiates Hibernation.
- If Hibernation is disabled and the notebook is on or in Standby, the power/standby light blinks. The notebook remains briefly in Standby, then shuts down and your unsaved work is lost.



Hibernation is enabled by default. To verify that Hibernation is enabled, follow the instructions in “Setting Power Procedure Preferences” earlier in this chapter.



Identifying the power/standby light

Resolving Low-Battery Conditions

When External Power Is Available

Select one of the following options:

- Connect the notebook to an electrical outlet.
- Plug an optional Automobile Power Adapter/Charger into the notebook and into a vehicle cigarette lighter receptacle.
- Plug an optional Aircraft Power Adapter into the notebook and into the in-seat power supply available on some commercial aircraft. (An Aircraft Power Adapter can run the notebook but cannot charge a battery pack.)

When a Charged Battery Pack Is Available

Turn off the notebook or initiate Hibernation, then insert a charged battery pack. For instructions, see the *Hardware Guide*, Chapter 3, “Battery Pack,” on this CD.

When No Power Source Is Available

Shut down the notebook or initiate Hibernation.

Charging a Battery Pack



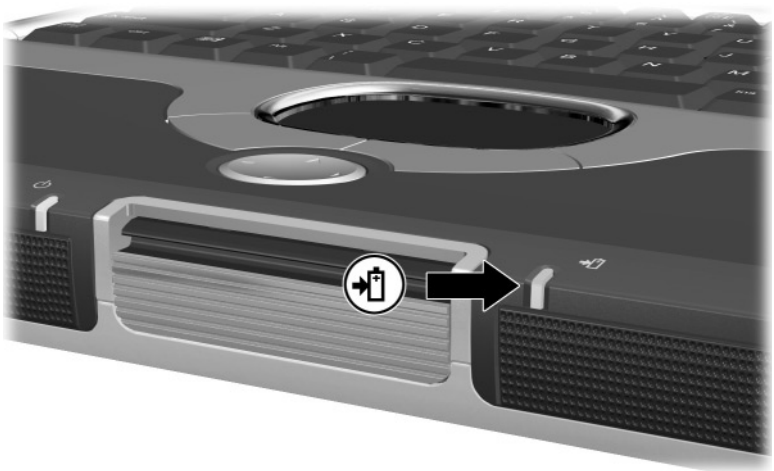
CAUTION: Allow sufficient air circulation around the notebook and the AC Adapter during use and while charging the battery pack to ensure adequate cooling of the devices. Prevent direct exposure to radiant heat sources.

To charge a battery pack, connect the notebook to external power through:

- The AC Adapter.
- An optional Automobile Power Adapter/Charger.

Charging may be delayed if a battery pack is new, has not been used for 2 weeks or more, or is much warmer or cooler than room temperature.

While the battery pack is charging, the battery light turns on. The light turns off when the battery pack is fully charged.



Identifying the battery light

Monitoring the Charge in a Battery Pack

Obtaining Accurate Charge Information

To increase the accuracy of the battery charge display:

- Allow a battery pack to discharge to the low-battery level through normal use before charging it.
- When you charge a battery pack, charge it fully.
- Calibrate a new battery pack before you charge it.
- Calibrate an in-use battery pack that has not been used for one month or more before you charge it.

Displaying Charge Information on the Screen

The amount of charge remaining in the battery pack is displayed on the Power Meter tab.

To display the battery charge information, select Start > Control Panel > Performance and Maintenance > Power Options icon > Power Meter tab.

Battery Conservation Procedures and Settings

Use the following procedures to conserve power while the notebook is running on battery power:

- Turn off local area network (LAN) connections, and exit modem applications when you are not using them.
- Disconnect external equipment you are not using that is not connected to an external power source.
- If you leave your work, initiate Standby or Hibernation or shut down the notebook.
- Stop or remove a PC Card that you are not using.
- Use the **Fn+F7** and **Fn+F8** hotkeys to quickly increase or decrease screen brightness as you work.

Security Management

This chapter describes security features specific to your notebook. For information about Windows XP Professional or Windows XP Home security features, refer to your operating system documentation.

Security Features Quick Reference

To Protect Against This Risk	Use This Feature
Unauthorized use of the notebook	Power-on password
Unauthorized access to the notebook system upon starting up	Setup password
Unauthorized access to the contents of a hard drive	DriveLock
Enable or Disable a CD-ROM drive, floppy drive, or a parallel port during notebook startup	Device Security
Unauthorized removal of the notebook	Security cable slot

If You Forget a Password

- If you forget your power-on password or setup password, refer to *Worldwide Telephone Numbers*, included with the notebook, for the General Information number to call for information about contacting a Compaq authorized service provider.
- If you forget your DriveLock password, the hard drive is permanently unusable.

Using a Power-On Password

A power-on password prevents unauthorized use of the notebook. After being set, a power-on password must be entered each time the notebook is turned on, restarted, or exits Hibernation. A power-on password:

- Can be the same as any other password.
- Does not display as you set, enter, change, or delete it.
- Must be set and entered with the same keys. For example, a password set with keyboard number keys will not be recognized if entered with embedded keypad number keys.
- Can include up to 8 alphanumeric characters and is not case sensitive.

Setting, Changing or Deleting a Power-On Password

A power-on password is set, changed, or deleted in the Setup Utility.

1. To open the Setup Utility, turn on or restart the notebook, then press **F10** while the To Change System Settings, Press F10 message is displayed in the lower left corner of the screen.

2. Select Security from the menu bar. (To select a menu, use the arrow keys.)
3. Select the Set Power-On Password field. Then,
 - ☐ To set a power-on password:
 - a. Type the password in the New Password field, then press **enter**.
 - b. Type the password in the Confirm New Password field, then press **enter**.
 - ☐ To change a power-on password:
 - a. Type the current password in the Enter Current Password field, then press **enter**.
 - b. Type the new password in the Enter New Password field, press **enter**.
 - c. Type the new password in the Confirm New Password field, then press **enter**.
 - ☐ To delete a power-on password, select the Set Power on Password option, type the current password in the Enter Current Password field, then press **enter** 3 times.
4. When you are prompted to continue, press **enter**.
5. To save your preferences and exit the Setup Utility, press **esc** (or select Exit from the menu bar), select Exit Saving Changes, then follow the instructions on the screen.

Entering a Power-On Password

When prompted as the notebook is turned on or restarted, or exits Hibernation, type your password using the same keys you used to set the password, then press **enter**. After 3 unsuccessful attempts to enter the password, you must restart the notebook to try again.

Using a Setup Password

A setup password prevents unauthorized use of the notebook settings when turning on or restarting the system.

A setup password:

- Can be the same as any other password.
- Does not display as you set, enter, change, or delete it.
- Must be set and entered with the same keys. For example, a password set with keyboard number keys will not be recognized if entered with embedded keypad number keys.
- Can include up to 8 alphanumeric characters and is not case sensitive.

Setting, Changing or Deleting a Setup Password

A setup password is set in the Setup Utility.

1. To open the Setup Utility, turn on the notebook, then press **F10** while the To Change System Settings, Press F10 message is displayed in the lower left corner of the screen.
2. Select Security from the menu bar. (To select a menu, use the arrow keys.)
3. Select Setup Password, then press **enter**.
 - ❑ To set a setup password:
 - a. Type the password in the New Password field, then press **enter**.
 - b. Type the password in the Confirm New Password field, then press **enter**.

- ❑ To change a setup password:
 - a. Type the current password in the Enter Current Password field, then press **enter**.
 - b. Type the new password in the Enter New Password field, then press **enter**.
 - c. Type the password in the Confirm New Password field, then press **enter**.
 - ❑ To delete a setup password, select the Set Setup Password option, type the current password in the Enter Current Password field, then press **enter** 3 times.
4. When you are prompted to continue, press **enter**.
 5. To save your preferences and exit the Setup Utility, press **esc** (or select Exit from the menu bar), select Exit Saving Changes, then follow the instructions on the screen.

Using DriveLock



CAUTION: If you forget the DriveLock password, the protected hard drive is permanently unusable.

DriveLock prevents unauthorized access to the contents of a hard drive. After DriveLock protection is applied to a hard drive, the DriveLock password must be entered to access the drive

A DriveLock password:

- Can be deleted only by removing DriveLock protection from the drive. Removing DriveLock protection from a drive requires the use of the DriveLock password.
- Does not display as you set, enter, change, or delete it.
- Must be set and entered with the same keys. For example, a password set with keyboard number keys will not be recognized if you enter it with embedded keypad number keys.
- Can include up to 8 alphanumeric characters and is not case sensitive.

Protecting a Hard Drive with DriveLock



CAUTION: If you forget the DriveLock password, the protected hard drive is permanently unusable.



CAUTION: To prevent system lockup and loss of information:

- Shut down the notebook before removing a hard drive from the hard drive bay. Do not remove a hard drive while the notebook is on, in Standby, or in Hibernation.
 - If you are not sure whether the notebook is in Hibernation, turn the notebook on, then shut it down.
-

DriveLock preferences are entered in the Setup Utility. To access the DriveLock settings in the Setup Utility, shut down, then turn on the notebook to open the utility. If you open the Setup Utility from a Windows restart, DriveLock settings are not accessible.

1. To open the Setup Utility, turn on the notebook, then press **F10** while the To Change System Settings, Press F10 message is displayed in the lower left corner of the screen.
2. Select Security from the menu bar. (To select a menu, use the arrow keys.)
3. Select the DriveLock Passwords field, then press **enter**.
4. Read the warning. To continue, press **enter**.
5. Type the password in the New Password field, then press **enter**.
6. Type the password in the Confirm New Password field, then press **enter**.
7. To confirm DriveLock protection on the drive you have selected, type the word DriveLock in the confirmation field, then press **F10**.
8. To save your password, apply DriveLock protection to the drive, and exit the Setup Utility, press **esc** (or select Exit from the menu bar). Select Exit Saving Changes, then follow the instructions on the screen.

Accessing a Protected Hard Drive

When prompted for the DriveLock password, type your DriveLock password using the same keys you used to set the password, then press **enter**. After 2 unsuccessful attempts to enter the password correctly, you must restart the notebook to try again.

Changing a DriveLock Password or Removing DriveLock Protection from a Drive



CAUTION: To prevent system lockup and loss of information:

- Shut down the notebook before removing a hard drive from the hard drive bay. Do not remove a hard drive while the notebook is on, in Standby, or in Hibernation.
 - If you are not sure whether the notebook is in Hibernation, turn the notebook on, then shut it down.
-

DriveLock preferences are entered in the Setup Utility. To access the DriveLock settings in the Setup Utility, shut down, then turn on the notebook to open the utility. If you open the Setup Utility from a Windows restart, DriveLock settings are not accessible.

1. To open the Setup Utility, turn on the notebook, then press **F10** while the To Change System Settings, Press F10 message is displayed in the left corner of the screen.
2. Select Security from the menu bar. (To select a menu, use the arrow keys.) Select the DriveLock Protection field, then press **enter**.
 - ☐ To change a DriveLock password:
 - a. Type the current password in the Enter Current Password field, then press **enter**.
 - b. Type the new password in the Enter New Password field, then press **enter**.
 - c. Type the new password in the Confirm New Password field, then press **enter**.
 - ☐ To remove DriveLock protection from the drive, type the current password in the Enter Current Password field, then press **enter** 3 times.
3. To save your preferences and exit the Setup Utility, press **esc** (or select Exit from the menu bar), select Exit Saving Changes, then follow the instructions on the screen.

Using Device Security

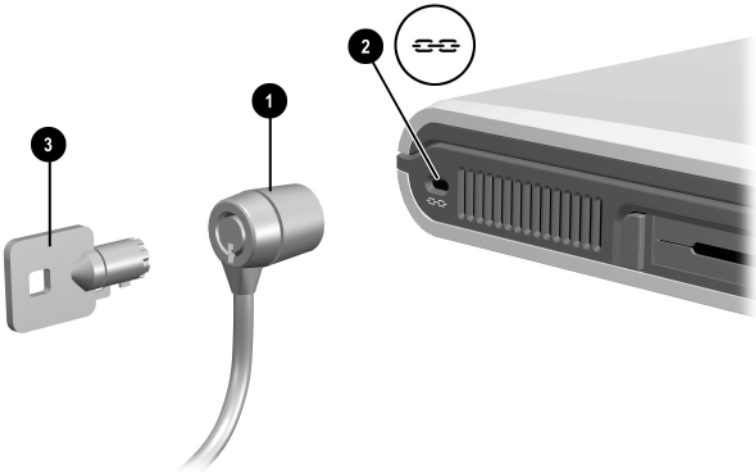
The Device Security feature allows an administrator to set the system startup preferences by enabling or disabling notebook devices.

Setting Device Security

1. To open the Setup Utility, turn on or restart the notebook, then press **F10** while the To Change System Settings, Press F10 message is displayed in the lower left of the screen.
2. Select Security from the menu bar. (To select a menu, use the arrow keys.)
3. In the Device Security field:
 - ☐ Select the enable or disable parallel port setting during boot time.
 - ☐ Select the enable or disable floppy boot during boot time.
 - ☐ Select the enable or disable CD-ROM boot during boot time.
4. To save your preferences and exit the Setup Utility, press **esc** (or select Exit from the menu bar), select Exit Saving Changes, then follow the instructions on the screen.

Connecting an Optional Cable Lock

Loop the cable around a secure object, then insert the cable lock ❶ into the security cable slot ❷ and lock it with the cable lock key ❸.



Connecting the optional cable lock

Software Updates and Restorations

Updating Software

For optimal notebook performance and to make sure your notebook remains compatible with changing technologies, Compaq strongly recommends that you install the latest versions of Compaq software as they become available.

To update Compaq software:

1. Prepare for any update by identifying your notebook type, series or family, and, in some cases model. Access the updates on your local Compaq Web site.
2. Download and install the updates.

Preparing for a Software Update

If your notebook connects to a network, Compaq recommends that you consult with your Network Administrator before installing any software updates.

Accessing Notebook Model Information

To access the updates for your notebook, you may need to know the following information about your notebook:

- The product *category* is Notebook.

- The product *family* name and *series* number are printed on the display bezel.
- More complete *model* information is provided on the serial number label on the underside of the notebook.

To open Computer Setup, turn on or restart the notebook. Press **F10** while the To Change System Settings, Press F10 message is displayed in the lower left of the screen.

- To change the language, press **F2**.
- For navigation instructions, press **F1**.

Accessing Software Updates

For instructions for updating software from the Compaq Web site, visit <http://www.compaq.com/athome/support/>.

Updating Software from the Internet

Most software at the Compaq Web site is available in English only and packaged in a compressed file called a *SoftPaq*[™]. Some Read Only Memory (ROM) updates may be packaged in a compressed file called a *RomPaq*[™]. Other ROM updates may be provided as a CPQFlash SoftPaq.

Most download packages contain a file named Readme.txt. A Readme.txt file contains detailed descriptions, installation, and troubleshooting information about the download. The Readme.txt files included with RomPaqs are in English only.

Downloading and Installing a SoftPaq

To update software:

1. Access the page at the Compaq Web site that provides software for your notebook.
 - ☐ For home and small office products, visit:
<http://www.compaq.com/athome/support/>
 - ☐ For corporate office products, visit:
<http://www.compaq.com/support/files>
2. In the Notebook column, select your notebook series.
3. On the next page that is displayed, select your notebook from the lists. Then follow the instructions on the screen to select a software package.
4. At the download area:
 - a. Write down the number or name of the software package.
 - b. Follow the instructions on the Web page to download the software package.
5. When the download is complete, open Windows Explorer.
6. In the left pane of the Windows Explorer window, select My Computer > your hard drive (usually, drive C) > Compaq.
7. In the Compaq folder, select the name or number of the software package.
8. Select the file that ends with an .exe extension (for example, Filename.exe), and press **enter**. The installation begins.
9. To complete the installation, follow the instructions on the screen.



After a message on the screen reports a successful installation, you can delete the download package from the Compaq folder.

Restoring Software

The Restore CDs included with the notebook contain all the software that shipped preinstalled or preloaded on the notebook and instructions for restoring it.

You can use the Restore CDs to install or reinstall individual software items, such as applications, or to restore the notebook factory image.

The notebook factory image is the notebook software as it was when the notebook was shipped. When you restore to the factory image:

- All settings are as they were set at the factory when the notebook was shipped.
- All software is the version installed at the factory.
- All software not included in the factory-supplied image, including drivers, applications, and utilities that you personally installed, will have to be reinstalled.

If the notebook has become unresponsive, you may be able to start the notebook from a bootable Restore CD. For information about starting the notebook from a bootable Restore CD, see the documentation included with the Restore CDs.



CAUTION: To prevent an unsuccessful restoration, use a Restore CD only while the notebook is connected to reliable external power using the AC Adapter. (Do not use a Restore CD while the notebook is running on battery power or connected to an optional power source.) During a restoration or installation:

- Do not unplug the notebook from the electrical outlet.
 - Do not shut down the notebook.
 - Do not remove or insert a drive.
-

Setup Utilities and Diagnostics

Selecting the Setup Utility

The notebook features two system management utilities:

- **PhoenixBIOS Setup Utility**—A system information and customization utility that can be used even when your operating system is not working or will not load. This utility includes settings that are not available in the Windows XP Professional or Windows XP Home operating systems.
- **Compaq Diagnostics for Windows**—A system information and diagnostic utility that is used within your Windows operating system. Use this utility whenever possible to:
 - ☐ Display system information.
 - ☐ Test system components.
 - ☐ Troubleshoot a device configuration problem.



It is not necessary to configure a device connected to a USB connector on the notebook.

Using the Setup Utility

To open the utility:

1. Turn on or restart the notebook.
2. Press **F10** while the To Change System Settings, Press F10 message is displayed in the lower left corner of the screen.
3. Use the arrow keys to select the Main, Advanced, or Security menu, or Exit from the menu bar.
4. For navigation and selection instructions, read the information in the bar at the bottom of the screen.

To exit the utility:

1. Press **esc** or select the Exit screen.
2. Select an exit option.
3. At the exit prompt, select Yes to exit the utility or No to return to the utility, then press **enter**. (When the Setup Utility closes, your Windows operating system restarts.)

Selecting from the Main Screen

Select	To Do This
System Time*	Set the time.
System Date*	Set the date.
Product Name*	Display Compaq notebook name.
Notebook Model*	Display Model number of notebook.
CPU Type*	Display the CPU family.
CPU Speed*	Display the CPU clock speed.
BIOS Version*	Display the version number of the BIOS (Basic Input Output System).
KBC Version*	Display the version number of the KBC (keyboard controller).
Serial Number*	Display the serial number of the notebook.
Asset Tag*	Displays a unique asset tag.
Ownership Tag*	Displays a unique ownership tag.
UUD Number*	Unique system ID for systems with NICs installed
Note: Pressing F9 replaces all settings on the Main screen with factory default settings. Pressing F10 saves settings and exits. *Can be viewed on the Main screen without making a selection.	

Selecting from the Advanced Screen

Select	To Do This
Language	Select a display language for the BIOS from the popup menu: <ul style="list-style-type: none">■ US (English)■ FR (French)■ IT (Italian)■ GR (German)■ SP (Spanish)■ JR (Japanese)■ CT (Traditional Chinese)■ NL (Dutch)
Boot	Select from the following options: <ul style="list-style-type: none">■ Floppy Diskette Drive■ CD-ROM Drive■ Hard Drive■ Network Adapter
USB Legacy Support	Enable or disable access to the following legacy devices: <ul style="list-style-type: none">■ Mouse■ Keyboard
DMA (Direct Memory Access) Frame Buffer Size	Set the DMA buffer at 11 MB, 32 MB, or 64 MB.
Primary Master	Displays primary hard drive information.
Section 508 Compliance	Display the F10 delay in seconds. Enter 1, 2, 3, or 4.
PXE (Pre Execution Boot)	Enable or disable the PXE remote boot function.
Note: Pressing F9 replaces all settings on the Main screen with factory default settings. Pressing F10 saves settings and exits.	

Selecting from the Security Screen

For more information about passwords, see Chapter 2, “Security Management.”

Select	To Do This
Setup Password	Set, change, or delete a setup password.
Power-On Password	Set, change, or delete a power-on password.
DriveLock Passwords	<ul style="list-style-type: none">■ Protect a hard drive with DriveLock.■ Set or change a DriveLock password.■ Remove DriveLock protection from a hard drive.
Device Security	<ul style="list-style-type: none">■ Enable or disable a parallel port setting during notebook startup.■ Enable or disable the floppy boot during notebook startup.■ Enable or disable the CD-ROM boot during notebook startup.
Note: Pressing F9 replaces all settings on the Main screen with factory default settings. Pressing F10 saves settings and exits.	

Selecting from the Exit Screen

The command is followed by a confirmation prompt. Select Yes to confirm your exit command or No to return to the Setup Utility.

Select	To Do This
Exit Saving Changes	Save settings entered during current Setup Utility session, then exit and close the utility.
Exit Discarding Changes	Discard settings entered during current Setup Utility session, then exit and close the utility.
Load Setup Defaults	Replace all configuration settings in the Setup Utility with factory default settings. (Identification information is retained.)
Discard Changes	Discard settings entered during current Setup Utility session.
Save Changes	Save settings entered during current Setup Utility session.

Note: Pressing **F9** replaces all settings on the Main screen with factory default settings. Pressing **F10** saves settings and exits.

Using Compaq Diagnostics for Windows

When you open Compaq Diagnostics, a scan of all system components appears on the screen before the Compaq Diagnostics window opens.

You can display more or less information from anywhere within Compaq Diagnostics by selecting Level on the menu bar.

Compaq Diagnostics is designed to test Compaq components. If non-Compaq components are tested, the results may be inconclusive.

Installing Compaq Diagnostics

The Compaq Diagnostics utility is preloaded on the computer, but is not installed.

To install Compaq Diagnostics (or any other preloaded Compaq utility), select Start > All Programs > Setup Compaq Software > Next. Select the check box for Compaq Diagnostics for Windows. Clear the check boxes for preloaded software you do not want to install.

Accessing Compaq Diagnostics

To access the Compaq Diagnostics, select Start > Control Panel > Performance and Management, Compaq Diagnostics icon.

Obtaining, Saving or Printing Configuration Information

1. Open Compaq Diagnostics by selecting Start > Control Panel > Performance and Management > Compaq Configuration Record.
2. Select Categories, then select a category from the drop-down list.
 - ☐ To save the information, select File > Save As.
 - ☐ To print the information, select File > Print.
3. To close Compaq Diagnostics, select File > Exit.

Obtaining, Saving or Printing Diagnostic Test Information

1. Open Compaq Diagnostics by selecting Start > Control Panel > Performance and Management > Compaq Diagnostics.
2. Select the Test tab.
3. In the scroll box, select the category or device you want to test.
4. Select a test type:
 - ☐ **Quick Test**—Runs a quick, general test on each device in a selected category.
 - ☐ **Complete Test**—Performs maximum testing on each device in a selected category.
 - ☐ **Custom Test**—Performs maximum testing on a selected device.
 - ◆ To run all tests for your selected device, select the Check All button.
 - ◆ To run only the tests you select, select the Uncheck All button, then select the check box for each test you want to run.
5. Select a test mode:
 - ☐ **Interactive Mode**—Provides maximum control over the testing process. You determine whether the test was passed or failed and may be prompted to insert or remove devices.
 - ☐ **Unattended Mode**—Does not display prompts. If errors are found, they are displayed when testing is complete.
6. Select the Begin Testing button.

7. Select a tab to display a test report:
 - ☐ **Status tab**—Summarizes the tests run, passed, and failed during the current testing session.
 - ☐ **Log tab**—Lists tests run on the system, the numbers of times each test has run, the number of errors found on each test, and the total run time of each test.
 - ☐ **Error tab**—Lists all errors found on the computer with their error codes.
8. Select a tab to save the report:
 - ☐ **Log tab**—Select the Log tab Save button.
 - ☐ **Error tab**—Select the Error tab Save button.
9. Select a tab to print the report:
 - ☐ **Log tab**—Select the File menu > Save As, then print the file from your folder.
 - ☐ **Error tab**—Select the Error tab Print button.

Index

A

- air circulation and the computer 1–10
- audio/video playback, degraded by Hibernation or Suspend 1–3

B

- battery charge level displays on the screen 1–12
- battery conservation checklist 1–12
- battery pack
 - charging accessories 1–10
 - delayed charging 1–10
- BIOS (Basic Input Output System) 3–1

C

- cable lock, connecting 2–10
- CDs, Restore 3–4
- Compaq Diagnostics
 - configuration information 4–7
 - described 4–1
 - diagnostic test information 4–8
 - installing 4–7
- Compaq technical support
 - telephone numbers 2–2

- Compaq Web site, updating software from 3–1
- Compaq worldwide telephone numbers 2–2
- configuration of USB device 4–1, 4–3
- connecting optional cable lock 2–10
- conserving power
 - battery conservation checklist 1–12
 - Hibernation 1–2
 - Suspend 1–2
- CPQFlash file 3–2
- critical low-battery condition
 - identifying 1–8
 - resolving 1–9
 - restoring from 1–9

D

- diagnostics utility. *See* Compaq Diagnostics
- display switch
 - changing functions 1–6
 - default function 1–5
 - identifying 1–4
- DriveLock
 - changing password 2–8
 - entering password 2–8
 - forgetting password 2–2, 2–6

- protecting hard drive with 2–6
- removing protection 2–8
- setting 2–7
- using 2–6

E

- energy-saving tools
 - Hibernation 1–2
 - Suspend 1–2

F

- family, identifying notebook 3–1
- forgetting passwords
 - DriveLock password 2–2
 - power-on password 2–2

H

- hard drive and DriveLock password 2–8
- Hibernation
 - affecting hard drive removal 2–6
 - compared to Suspend and Shutdown 1–3
 - degraded playback of video/audio 1–3
 - described 1–2
 - disabling/enabling 1–2
 - exiting 1–6
 - initiating 1–6
 - setting preferences 1–6
 - when to use 1–2

K

- KBC ROM (Keyboard Controller Read Only Memory) 3–1

- keyboard locking at power-on 2–2, 2–4

L

- locked system and reinstalling software 3–4
- low-battery conditions
 - identifying 1–7
 - resolving 1–9

M

- model, identifying notebook 3–1

N

- notebook model, family, type 3–1

O

- operating system, reinstalling 3–4

P

- passwords
 - changing or deleting
 - DriveLock password 2–8
 - entering power-on password 2–3
 - forgetting DriveLock password 2–2, 2–6
 - forgetting power-on password 2–2

- setting DriveLock password 2-6
- setting, changing, or deleting power-on password 2-2, 2-9
- playback of audio/video, degraded 1-3
- pointing device, locking at power-on 2-2, 2-4
- power button
 - changing functions 1-6
 - identifying 1-4
- power conservation
 - battery conservation checklist 1-12
 - Hibernation 1-2
 - Suspend 1-2
- power controls, identifying 1-4
- power procedures, default
 - initiating/exiting
 - Hibernation 1-6
 - initiating/exiting Suspend 1-5, 1-6
 - turning on/off 1-5
- power settings, accessing 1-6
- power source, selecting
 - battery pack 1-1
 - external power 1-1
- power/suspend light, identifying 1-4
- power-on and keyboard or mouse locking 2-2, 2-4

- power-on password
 - described 2-2, 2-4
 - entering 2-3
 - forgetting 2-2
 - setting, changing, or deleting 2-2, 2-9

R

- removal of hard drive 2-6
- Restore CDs 3-4
- restoring software 3-4
- RomPaq 3-2

S

- security features quick reference 2-1
- series, identifying notebook 3-1
- setting DriveLock password 2-7
- setting power-on password 2-2, 2-4
- Setup Compaq Software icon 4-7
- Setup utility
 - advanced screen 4-4
 - described 4-1
 - DriveLock password 2-6
 - exit screen 4-6
 - main screen 4-3
 - power-on password 2-2, 2-9
 - security screen 4-5
 - using 4-2
- Shutdown compared to Hibernation and Suspend 1-3

- SoftPaq 3–2
 - software
 - reinstalling 3–4
 - restoring 3–4
 - software updates
 - CPQFlash file 3–2
 - determining notebook model, family, type 3–1
 - identifying software packages 3–2
 - RomPaq 3–2
 - SoftPaq 3–2
 - summary of procedures 3–1
 - updating KBC ROM from Internet 3–2
 - updating system ROM from Internet 3–2
 - Suspend (Standby)
 - affecting hard drive removal 2–6
 - compared to Hibernation and Shutdown 1–3
 - degraded playback of video/audio 1–3
 - described 1–2
 - exiting 1–6
 - initiating 1–5
 - setting preferences 1–6
 - when to use 1–3
 - Suspend button (sleep button)
 - changing functions 1–6
 - identifying 1–4
 - system lock-up and
 - reinstalling software 3–4
 - system ROM (Read Only Memory) 3–1
- T**
- telephone numbers, Compaq Technical Support 2–2
- U**
- unresponsive system and
 - reinstalling software 3–4
 - USB device configuration 4–1, 4–3
- V**
- video/audio playback affected by Hibernation/Suspend 1–3
- W**
- worldwide telephone numbers 2–2