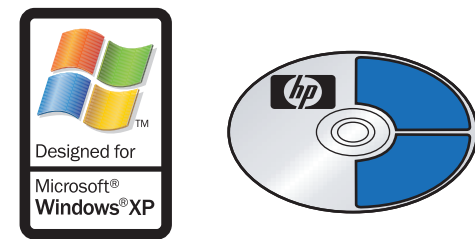


Q3083 - 90188

# 1 Windows Users START HERE



This side of the poster is for **Windows** users. Make sure you are using the CD and side of the poster that matches your operating system.

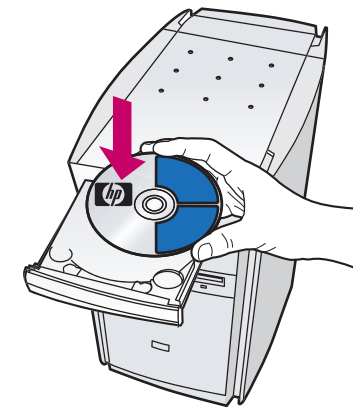
# 2 Turn your computer on

- a Turn on your computer and wait for the Windows desktop to appear.
- b Close any open programs.



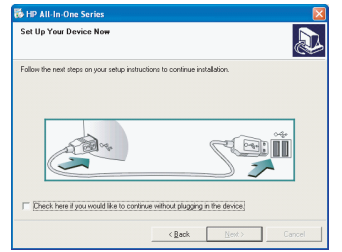
# 3 Begin software installation

- a Insert the HP PSC Windows CD.
- b Follow the onscreen instructions.



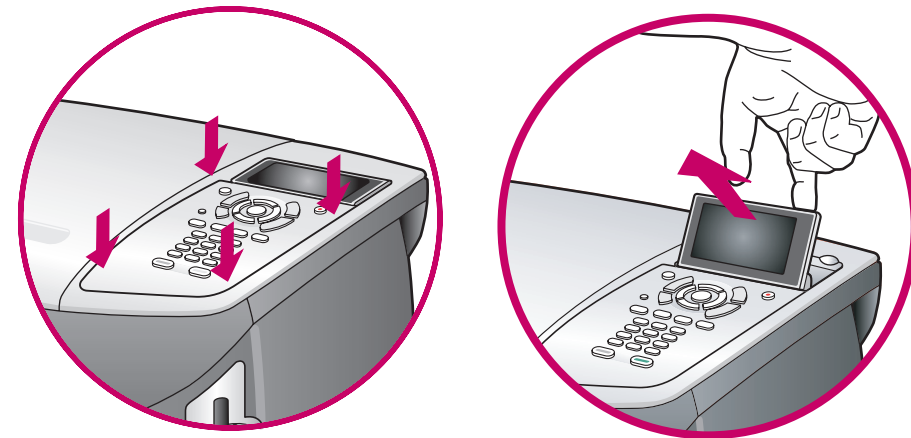
If the software does not appear on your computer screen after inserting the CD, see the Troubleshooting Information chapter in the Reference Guide.

- c **Do not connect the USB cable yet.** When you see the **Setup your Device Now** dialog box, continue to step 4.



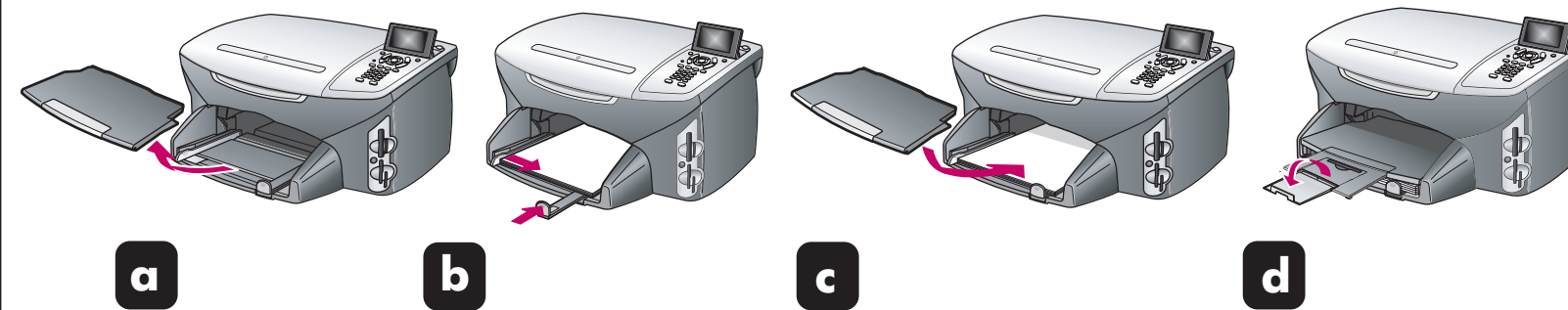
# 4 Attach front panel cover

- a Remove any packaging material.
- b Place the front panel cover over the buttons. Firmly press on all sides to snap the cover in place. Make sure all the buttons are visible.
- c Lift the display.

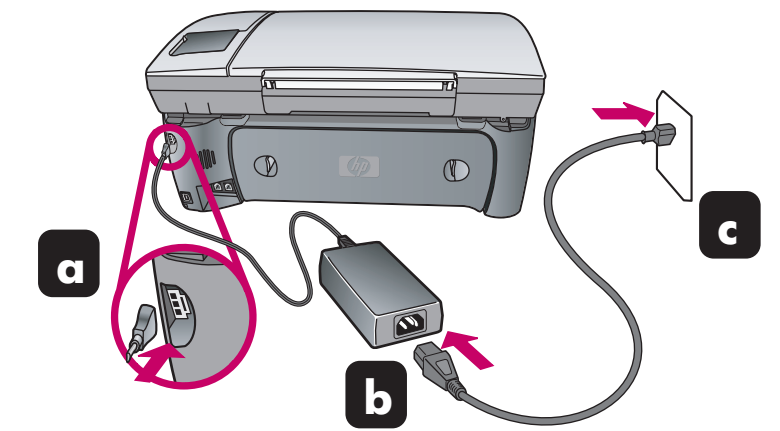


# 5 Load paper

Use plain white paper to prepare for print alignment.

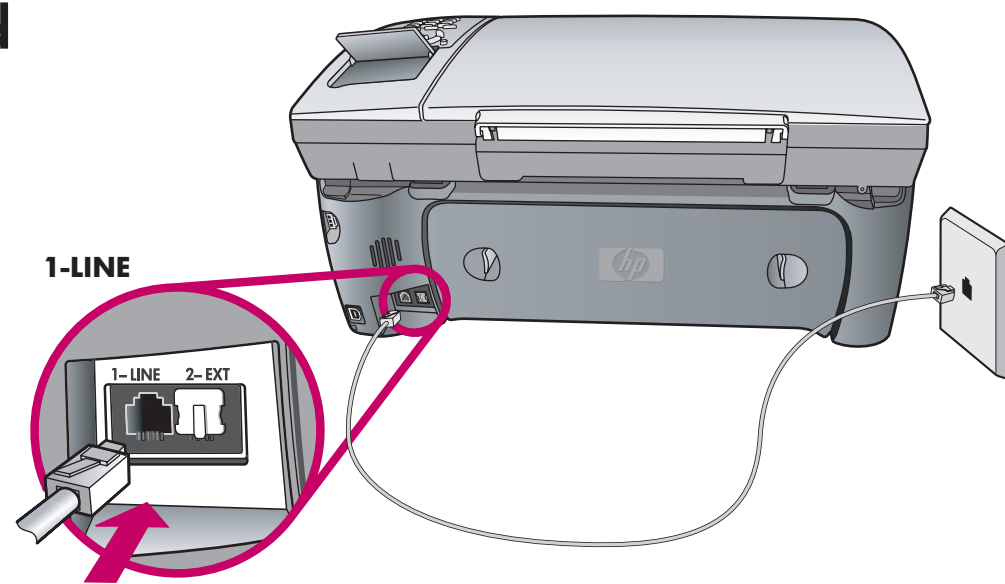


# 6 Connect power cords



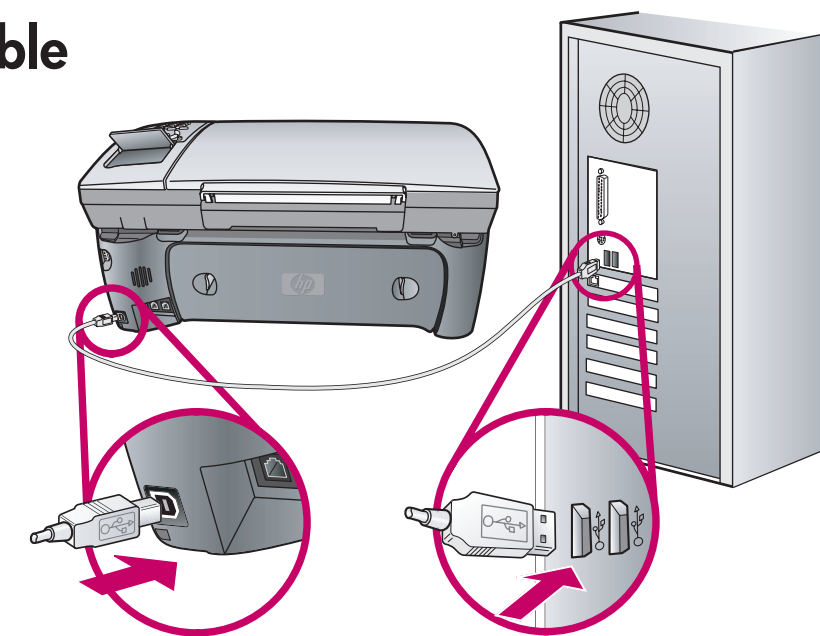
# 7 Connect supplied phone cord

- a You must connect the supplied phone cord to the phone jack on the left (1-LINE).
- b To connect an answering machine or use your own phone cord, see the Fax Setup chapter in the Reference Guide.



# 8 Connect USB cable

Make sure that you see the screen in step 3 before plugging in your USB cable. Do not connect the USB cable to a keyboard.

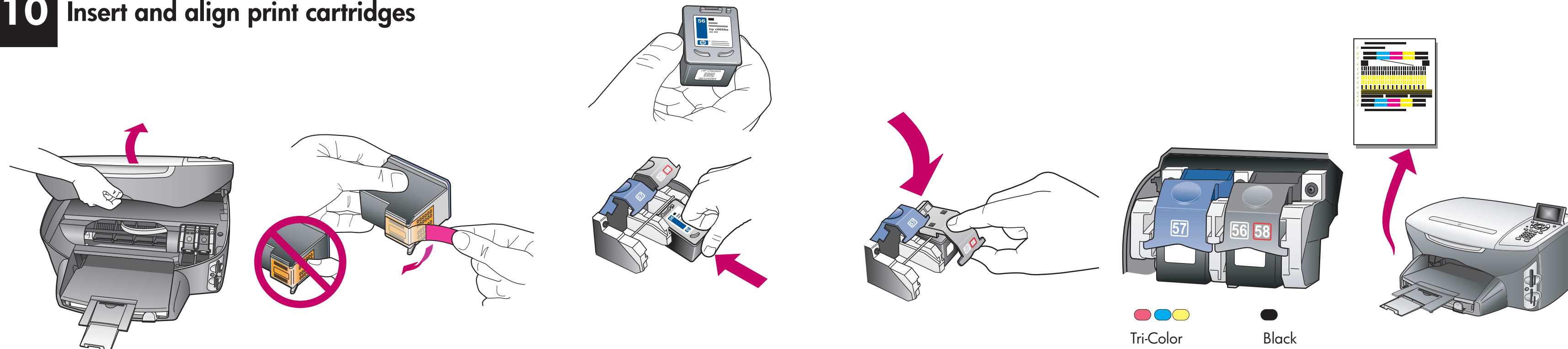


# 9 Turn HP PSC on

- a Turn power on.
- b Wait for the print cartridge message to appear, and then continue to the next step.

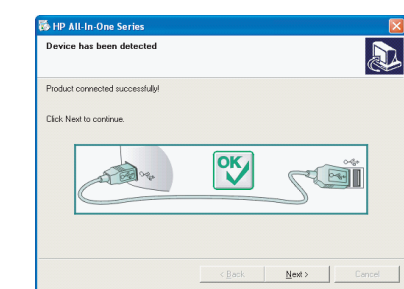


# 10 Insert and align print cartridges

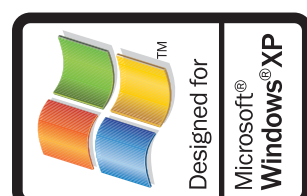


- a Make sure the power is on. Lift the print carriage door up until it catches. Lift the blue and gray latches.
- b Remove the bright pink tape from both print cartridges. Do not touch the gold-colored contacts or retape the cartridges.
- c Hold the black print cartridge with the HP label on top. Slide the cartridge underneath the metal bar into the right (gray latch) side of the print carriage.
- d Press down on the gray latch until it locks into place. Insert the color cartridge on the left side, and lock into place.
- e Make sure both latches are locked into position. Close the door.
- f Press **OK** on the front panel to begin alignment. After a page prints, alignment is complete. Discard or recycle this page.

# 11 Finish software installation




- a Hardware setup is complete. Return to your computer. On the dialog box with the green checkmark, click **Next**. Depending on your system, it may take 20 minutes or more to finish installing the software.
- b After you restart your computer, the Fax Setup Wizard appears. Follow the onscreen instructions. When you see the **Congratulations!** dialog box, you are ready to use your HP PSC. If you encounter any problems during setup, see the Reference Guide.





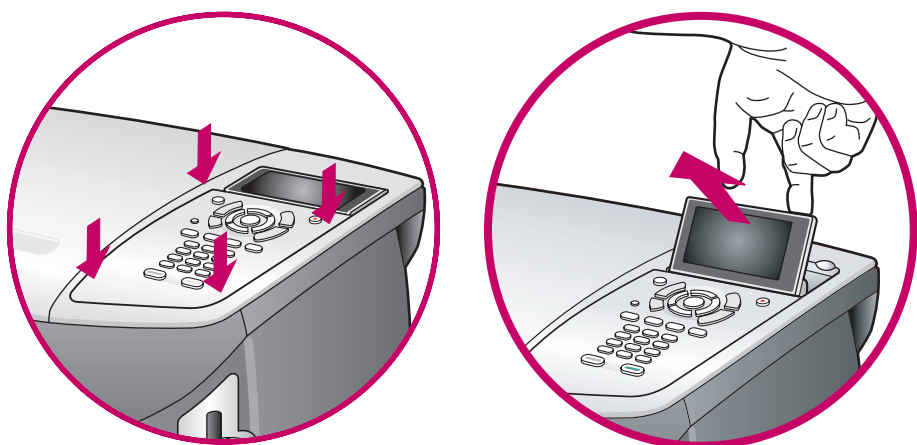
### 1 Macintosh Users START HERE



This side of the poster is for **Macintosh** users. Make sure you are using the correct side of the poster and CD for your operating system.

### 2 Attach front panel cover

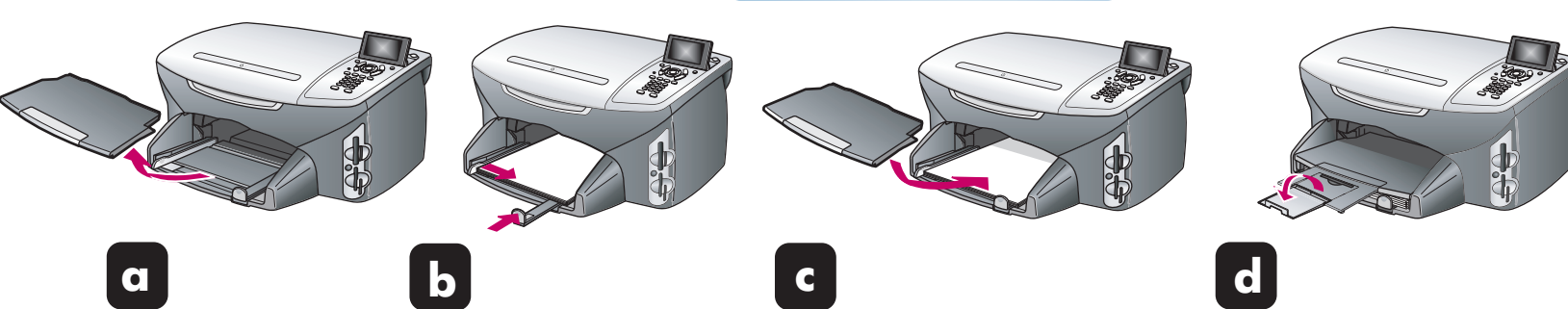
- Remove any packaging material.
- Place the front panel cover over the buttons. Firmly press on all sides to snap the cover in place. Make sure all the buttons are visible.
- Lift the display.



### 3 Load paper

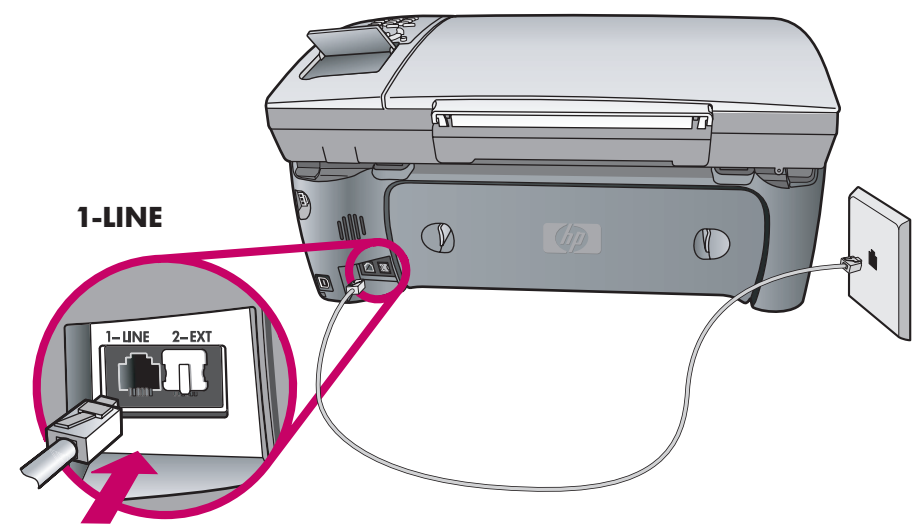
Use blank white paper to prepare for print alignment.

- Open the paper tray.
- Load paper.
- Close the paper tray.
- Align the paper.



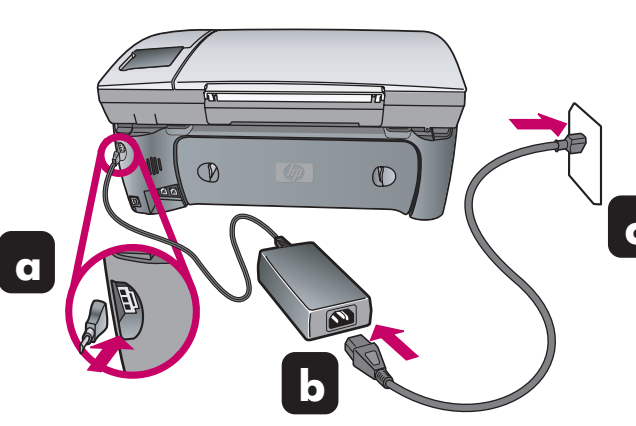
### 4 Connect phone cord

- You must connect the supplied phone cord to the phone jack on the left (1-LINE).
- To connect an answering machine or use your own phone cord, see the Fax Setup chapter in the Reference Guide.



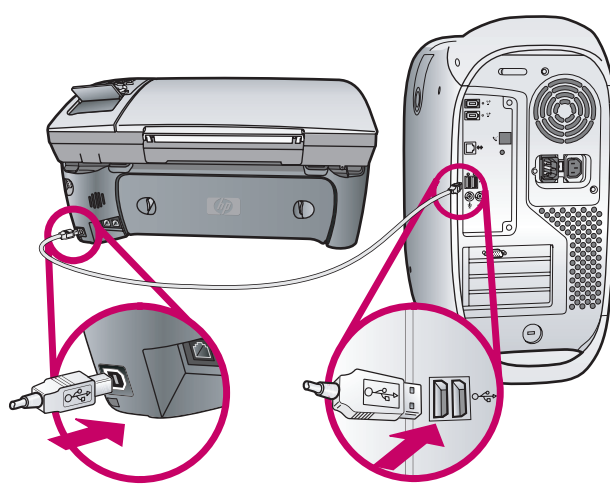
### 5 Connect power cords

- Connect the power cord to the printer.
- Connect the power cord to the power source.
- Plug the power cord into the wall outlet.



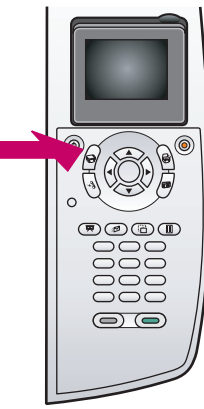
### 6 Connect USB cable

Do not connect the USB cable into a keyboard.



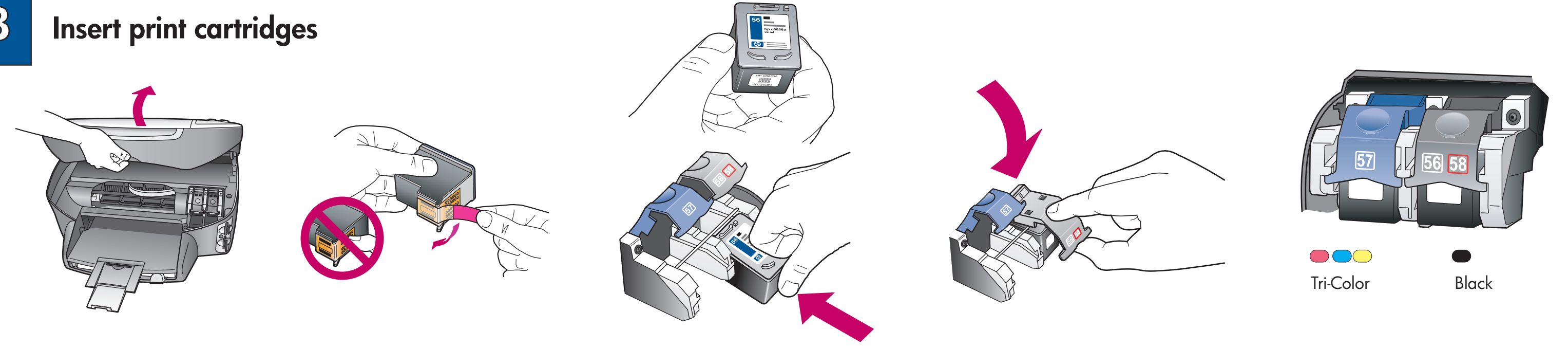
### 7 Turn HP PSC on

- Turn power on.
- Wait for the print cartridge message to appear, and then continue to the next step.



### 8 Insert print cartridges

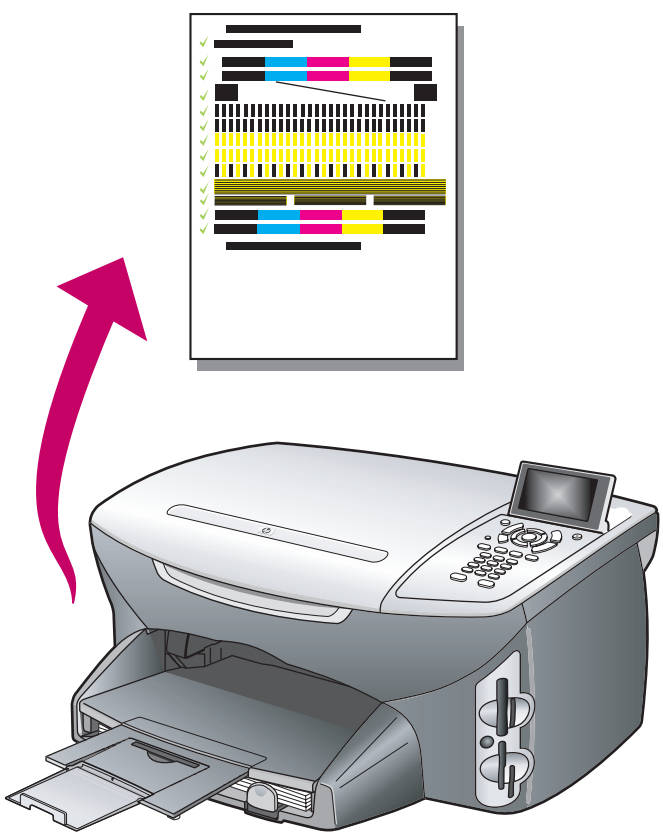
- Make sure the power is on. Lift the print carriage door up until it catches. Lift the blue and gray latches.
- Remove the bright pink tape from both print cartridges. Do not touch the gold-colored contacts or retape the cartridges.
- Hold the black print cartridge with the HP logo on top. Slide the cartridge underneath the metal bar into the right (gray latch) side of the print carriage.
- Press down on the gray latch until it locks into place. Insert the color cartridge on the left side, and lock into place.
- Make sure both latches are locked into position. Close the door.



Tri-Color      Black

### 9 Align print cartridges

Press **OK** on the front panel to begin alignment. After a page prints, alignment is complete. Discard or recycle this page.



### 10 Install software

- Turn on your Macintosh and wait for the desktop to appear. Insert the HP PSC Macintosh CD.
- Double-click the **HP All-In-One Installer** icon in your folder.
- Follow the onscreen instruction. Make sure you complete the Setup Assistant.



hp all-in-one installer

### 11 Congratulations!

You are ready to begin using your HP device. See the Reference Guide to get started. Have fun!

