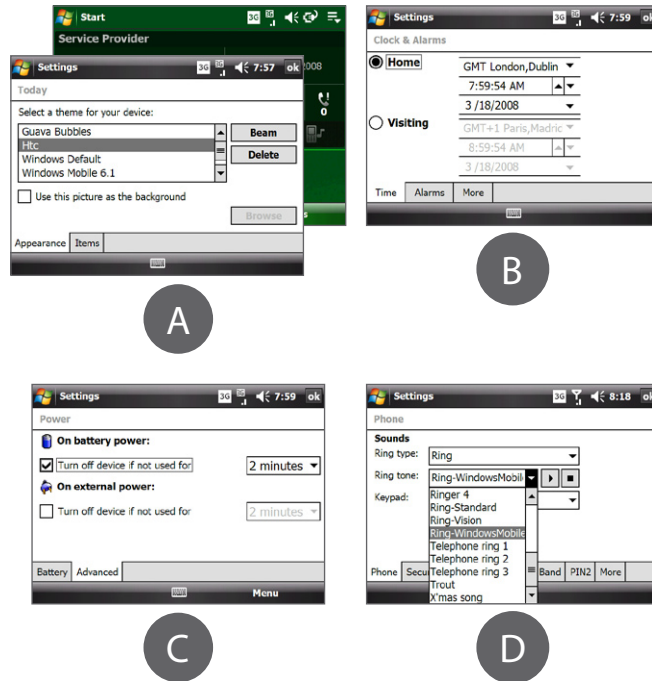


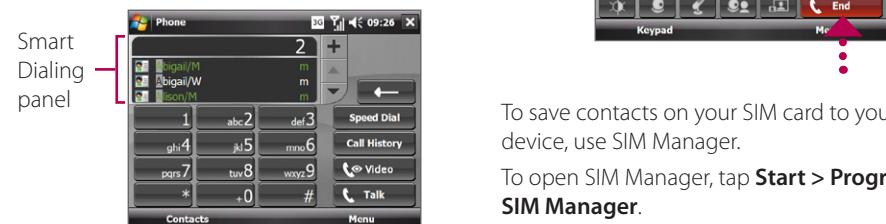
Personalize Your Device

- Change the Today screen background
Tap **Start > Settings > Personal** tab > **Today**.
- Set the date and time
Tap the **HTC Home** time display, then tap the **Time** tab.
- Manage power settings
Tap **Start > Settings > System** tab > **Power > Advanced** tab.
- Change ringer settings and tone
Navigate to the HTC Home Sound tab (), then tap the area that shows **Ringtone**.



Make a Voice or Video Call

- Tap **Start > Phone**.
 - On the Phone keypad, tap the keys with your finger or stylus to enter the phone number. The Smart Dialing panel will display the matching phone numbers in Call History, as well as the matching contacts found on your device and SIM card.
 - Select the number or contact you want to call, then tap:
 - Talk** to make a voice call.
 - Video** to start a video call.
- Note** For clearer conversations, connect a wired or Bluetooth headset to your device. To learn how to connect a Bluetooth headset, refer to the User Manual.



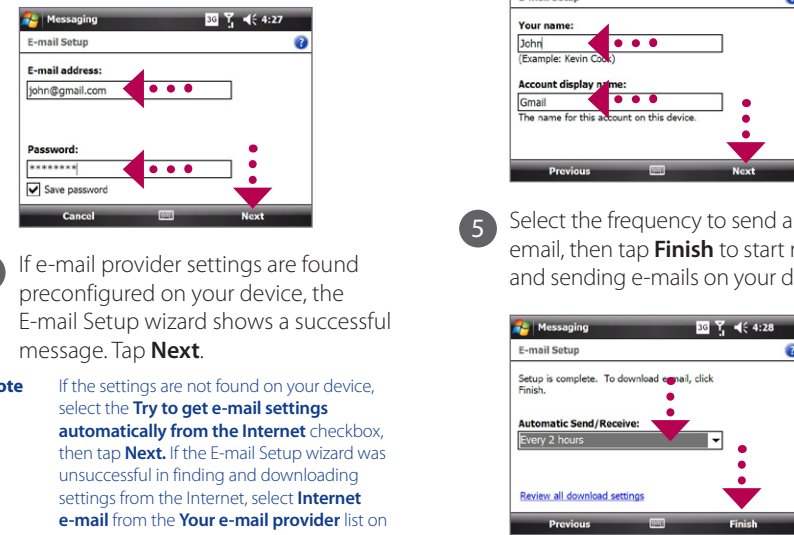
To save contacts on your SIM card to your device, use SIM Manager.

To open SIM Manager, tap **Start > Programs > SIM Manager**.

Get E-mail On Your Device

Set up your device so you can send and receive e-mail messages using your favorite e-mail service.

- Tap **Start > Messaging > Setup E-mail**.
 - Enter your **E-mail address** and **Password**, then tap **Next**.
 - If e-mail provider settings are found preconfigured on your device, the E-mail Setup wizard shows a successful message. Tap **Next**.
- Note** If the settings are not found on your device, select the **Try to get e-mail settings automatically from the Internet** checkbox, then tap **Next**. If the E-mail Setup wizard was unsuccessful in finding and downloading settings from the Internet, select **Internet e-mail** from the **Your e-mail provider** list on the next screen. You will be asked to enter e-mail server settings. See the User Manual for details.



hTC Advantage X7510 Read Me First

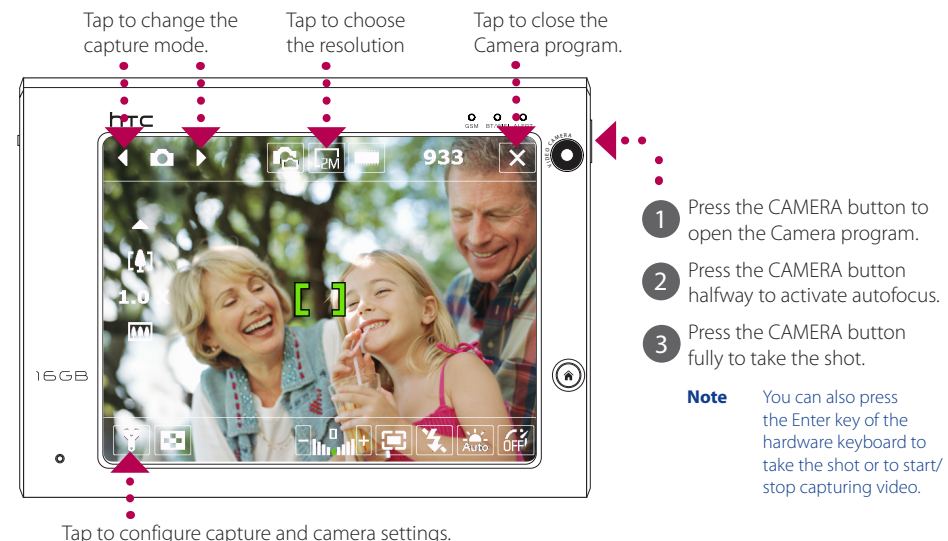
This **Read Me First** will help you get started with using your Windows Mobile® 6.1 powered device. We recommend that you have this guide handy when you start using your device. For a more complete reference, consult the User Manual that came with the device.

Secure Your Device

- To enable the SIM PIN
Enabling the SIM PIN requires you to enter the PIN before you can use the phone features of your device.
You can enable the SIM PIN by tapping **Start > Settings > Personal** tab > **Phone > Security** tab and selecting the **Require PIN when phone is used** checkbox.
- To enable the device password
Enabling the device password requires you to enter a password to unlock the device after it has been left idle for a set period of time.
 - Tap **Start > Settings > Personal** tab > **Lock**.
 - Select the **Prompt if device unused for** check box, then select the time before your device asks for the password.
 - Select the **Password** type.
 - Enter and confirm the password, then tap **OK**.
- To enable the key lock
Enabling the key lock helps prevent accidental screen taps or button presses when the device is in your bag or pocket.
Lock the keys by tapping the **Launcher** tab () on the HTC Home, then tapping .
To unlock, tap **Unlock**, then tap the **Unlock** button on the screen.

Capture a Photo or Video

Use the Camera of your device to capture those precious moments.



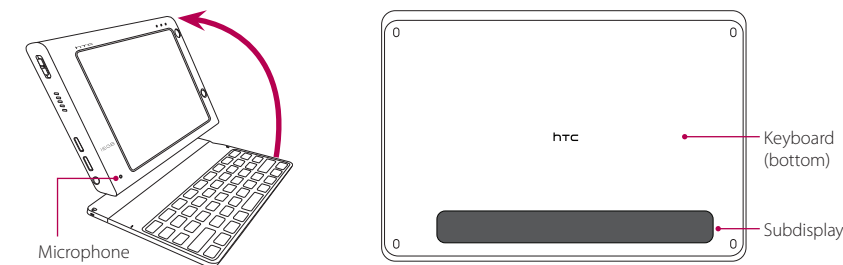
The photo will be saved to the My Pictures folder, unless you choose to delete it by tapping in the Review screen after taking the photo. Tap if you want to send the photo via MMS or e-mail. Refer to the User Manual for more information on how to use the Camera.

You can synchronise your device with your company's Microsoft Exchange server so you get your company emails on your device. Refer to the User Manual for more information.

View Information on the Subdisplay

The Subdisplay shows the current local and visiting date and time, notifications, and device status such as signal strength, audio, and battery power, on a designated area on the screen. The Subdisplay is automatically activated when the keyboard covers the screen.

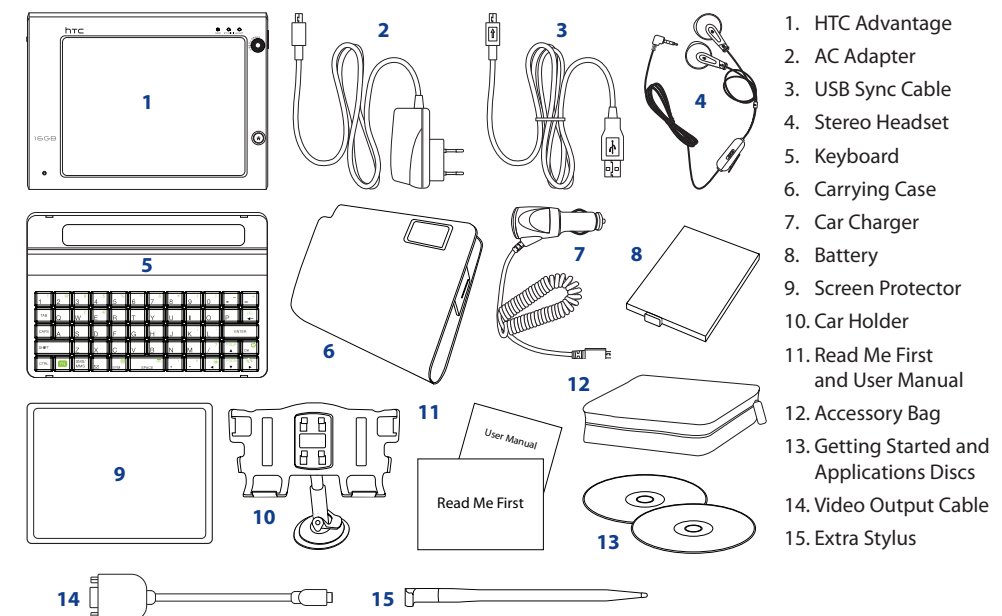
To activate the Subdisplay, cover the device touch screen with the hardware keyboard. The transparent window of the hardware keyboard must be on the same side with the microphone.



To cycle through various information that appears on the Subdisplay, slide the VOLUME CONTROL up or down.

What's in the Box

These are the items that you should find inside the box.



www.htc.com

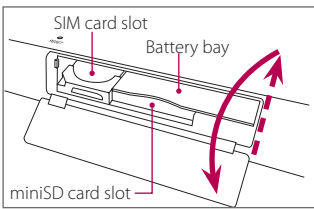


90H00xxx-xxM Rev.A

Before Using Your Device

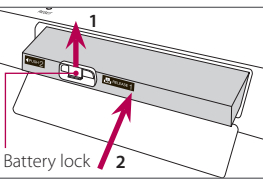
A. Open the battery compartment

Slide up the battery compartment cover, then flip it down to access the battery bay, SIM card slot, and miniSD™ card slot.

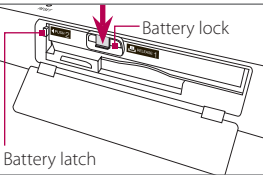


C. Install the battery

Pull up the battery lock (1), then insert the battery into the bay (2) with its label side up.

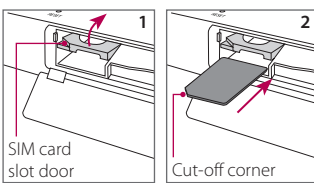


When the battery latch clicks into place, press the battery lock, then close the battery compartment cover.



B. Install the SIM card

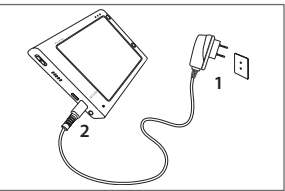
Flip up the SIM card slot door (1), then insert the SIM card into the slot with its gold contacts facing up and its cut-off corner facing out the slot (2).



Flip down the SIM card slot door, then press it until it clicks in place.

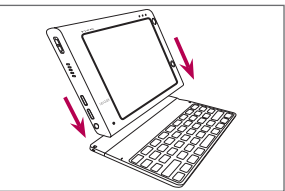
D. Charge the battery

The battery is partially charged out of the box. To charge the battery, connect the AC adapter plug to an electrical outlet (1) and then connect the USB end to the DC IN/ SYNC port on the left panel of the device (2). The battery is fully charged after about 3 hours of charging.



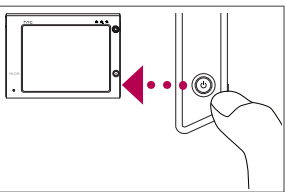
E. Attach the hardware keyboard

Attach the keyboard to your device via the keyboard connector. The device securely attaches itself to the keyboard through a magnet. You can start entering text into your document or message by pressing the keys on the keyboard.



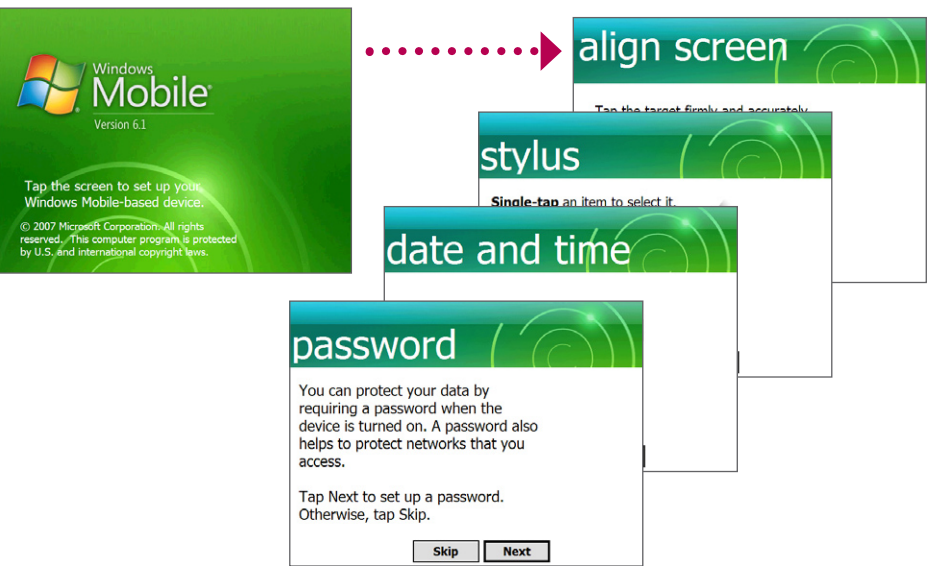
F. Turn the device on or off

Press and hold the POWER button for about 3 to 5 seconds to turn the device on or off. When turning off, a message will appear on the screen. Tap **Yes** to turn off the device. Press the POWER button shortly to turn off the display temporarily and save battery power.



Quick Setup Wizard

When you power on your device for the first time, a Quick Start Wizard will guide you through touch screen calibration, provide a quick tutorial on stylus operation and pop-up menus, and allow you to set the date, time, and the device password. Follow the on-screen instructions to complete the wizard.



Synchronize Your Device and Computer

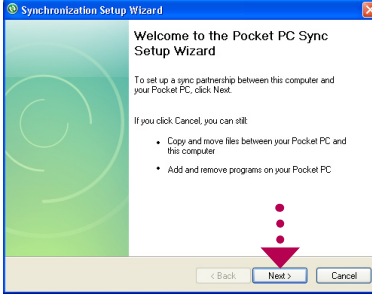
Synchronize your device with your computer to keep information such as Outlook e-mails, contacts, tasks, and appointments up-to-date on your device.

Set up synchronization software on your computer

Depending on the operating system of your computer, you will need either Microsoft ActiveSync® 4.5 (or later) or Windows Mobile® Device Center to synchronize your device with your computer.

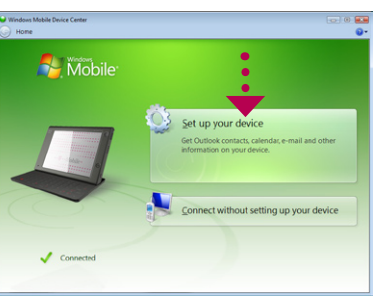
Set up ActiveSync on Windows® XP

- 1 Install ActiveSync 4.5 on your computer from the Getting Started Disc.
- 2 Connect your device to your computer. The Synchronization Setup Wizard automatically starts and guides you to create a synchronization partnership. Click **Next** to proceed.

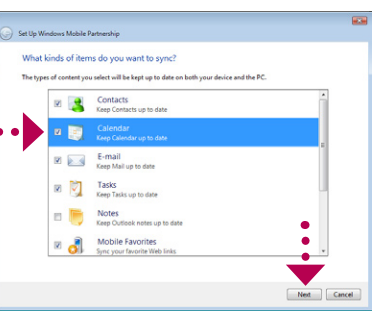


Set up Windows Mobile Device Center on Windows Vista®

- 1 Connect your device to your computer. In Windows Mobile Device Center, click **Set up your device**.



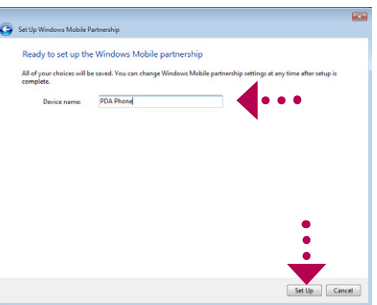
- 2 Select the information you want to synchronize and click **Next**.



- 3 To synchronize your device with your computer, clear the **Synchronize directly with a server running Microsoft Exchange** check box and click **Next**.
- 4 Select the information types that you want to synchronize, then click **Next**.

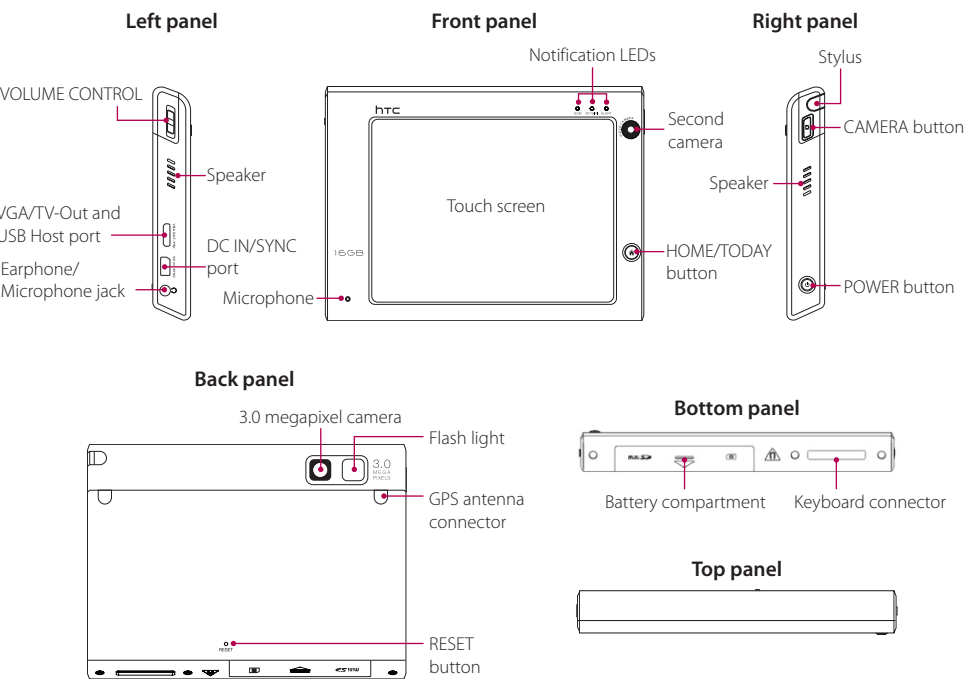


- 3 Type a name for your device and click **Set Up**.



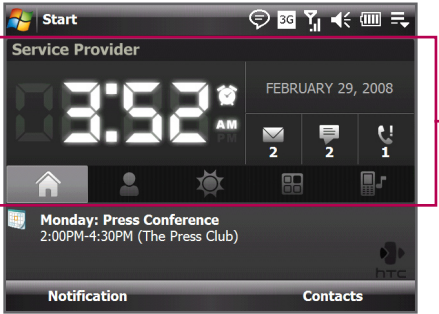
- 5 Choose whether to allow wireless connections while your device is connected to the computer.
- 6 Click **Finish**.

The PDA Phone

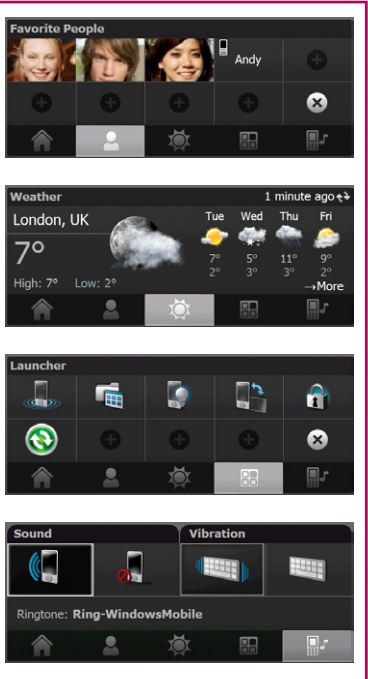


HTC Home™

HTC Home™ is a Today screen plug-in that gives you up-to-date local information at a glance, such as time, date, and weather information, and shows new messages and missed calls. It also comes with customizable contacts and launcher tabs where you can add your favorite contacts and applications for convenient one-touch access, and a profile selector where you can quickly change the profile or ring tone of your device and enable or disable the hardware keyboard vibration.



HTC Home: Home tab



Go Online and Surf the Web

You can use **Wi-Fi®** to connect your device to the Internet.

Note If there is no Wi-Fi hotspot in your area, you can connect your device to your wireless service provider's 3G/GPRS network to have Internet access.



Tap **Start > Settings > Connections** tab > **Comm Manager**, then tap the Wi-Fi button.



Select an open wireless network (Unsecured), then tap **OK**. Your device is now connected to the Internet.

Note If you are trying to connect to a secured wireless network (Security-enabled), you may need to enter a network key before you can connect to it.

When your device is connected to the Internet, you can:

- Surf the web by tapping **Start > Internet Explorer**.
- Chat with friends by tapping **Start > Programs > Messenger**.
- Read the latest news by tapping **Start > Programs > RSS Hub**.