

Smart USB-WLAN Adapter Quick Guide

Issue: 04
Part Number: 31500BMB
Date: 2019-09-20



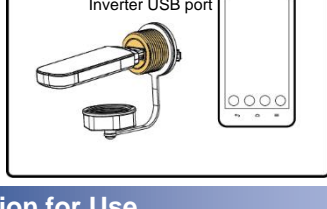
Copyright © Huawei Technologies Co., Ltd. 2019. All rights reserved.

NOTICE

The information in this document is subject to change without notice. Every effort has been made in the preparation of this document to ensure accuracy of the contents, but all statements, information, and recommendations in this document do not constitute a warranty of any kind, express or implied.

1 Overview

The Smart USB-WLAN Adapter (WLAN module for short) is a module that can connect to the USB port on a PV device to perform local maintenance for the device over WLAN module and a mobile phone app. For details about the applicable PV device models and version mappings, see the *SUN2000 APP User Manual*. This document describes how to use the WLAN module by using the inverter as an example.



2 Description for Use

NOTE

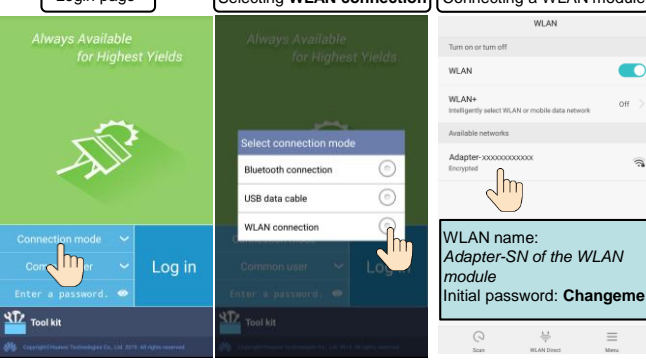
- Before using the WLAN module, ensure that the device connecting to it has been powered on.
- When you use the WLAN module to implement the communication between SUN2000 app and the device, ensure that one mobile phone connects to only one device.
- Access the Huawei app store (<http://appstore.huawei.com>), or Google Play (<https://play.google.com>), search for **SUN2000**, and download the SUN2000 app installation package. The WLAN module must be used with V3.2.00.001 or a later version, which can be downloaded only on Android mobile phones currently.
- After the WLAN module connects to the device, see the *SUN2000 APP User Manual* for details about how to operate the device.
- The screen snapshots in this document correspond to app 3.2.00.001 (Android).

1. Insert the WLAN module into the USB port of the device.
2. Run the SUN2000 app.
3. Choose **Connection Mode > WLAN connection**.
4. Select the WLAN module name and connect the app to the WLAN module.

Login page

Selecting WLAN connection

Connecting a WLAN module



NOTICE

- Use the initial password upon first power-on and change it immediately after login. To ensure account security, change the password periodically and keep the new password in mind. Not changing the initial password may cause password disclosure. A password left unchanged for a long period of time may be stolen or cracked. If a password is lost, devices cannot be accessed. In these cases, the user is liable for any loss caused to the PV plant.
- Do not interrupt the WLAN connection between the phone and the WLAN module by switching to another WLAN network.
- After the operation is complete, remove the WLAN module from the device and reinstall the dustproof cover for the USB port on the device.

3 Operating Environment

Item	Range	Item	Range
Operating temperature range	-30°C to +65°C	Operating humidity	5%–95%
Storage temperature range	-40°C to +70°C	Highest altitude	4000 m

4 Performance Specifications

Item	Specifications	Item	Specifications
Product model	USB-Adapter2000-C	Plastic material	PC+ABS (30%)
Dimensions	30 mm x 14 mm x 94 mm	Standard and frequency band	802.11b, 802.11g, 802.11n 2.412GHz to 2.484GHz
Net weight	20 g	Protection level	IP20
Port type	USB3.0	Environmental protection	RoHS
Installation mode	Pluggable	Storage environment	Dry and well-ventilated environment without corrosive gas
Transmission distance	10 m (no obstacle)	Radio frequency certification	Complies with SRRC, CE, FCC, RCM, and TELEC.

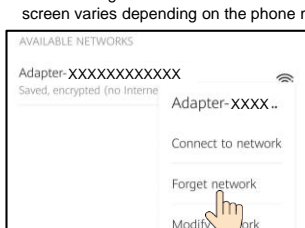
5 FAQ

Why Cannot the WLAN Name Be Searched?

- The WLAN module is not properly installed. Remove and insert the module to ensure reliable installation.
- The distance between the phone and the WLAN module does not meet the transmission distance requirement.
- After the WLAN module is installed on the device, if you do not connect to the device using the app or do not perform any operation on the app after connection for more than 30 minutes, the WLAN hotspot is automatically disabled. In this case, remove and reinstall the module and search again.
- The WLAN module is damaged. Replace the module.

Why Cannot the WLAN Module Be Connected?

- The WLAN module is not properly installed. Remove and insert the module to ensure reliable installation.
- The WLAN module is damaged. Replace the module.
- The WLAN is not allowed to be used when the phone is connected to the WLAN module. Forget the network from the WLAN list and reconnect to the WLAN. The screen varies depending on the phone model.



How Do I Change the WLAN Password?

After the SUN2000 app is connected to the WLAN module, you can change the WLAN password by choosing **Tool kit > Change WLAN Password**.

Why Does the App Display a Message Indicating that the WLAN Is Invalid or Occupied?

The WLAN module is being used by another phone. Wait for the other phone to exit or remove and insert the module.

6 Certification Declaration

FCC

1. This equipment has been tested and found to comply with the limits for a Class B digital device, pursuant to part 15 of the FCC Rules. These limits are designed to provide reasonable protection against harmful interference in a residential installation. This equipment generates uses and can radiate radio frequency energy and, if not installed and used in accordance with the instructions, may cause harmful interference to radio communications. However, there is no guarantee that interference will not occur in a particular installation. If this equipment does cause harmful interference to radio or television reception, which can be determined by turning the equipment off and on, the user is encouraged to try to correct the interference by one or more of the following measures:
 - Reorient or relocate the receiving antenna.
 - Increase the separation between the equipment and receiver.
 - Connect the equipment into an outlet on a circuit different from that to which the receiver is connected.
 - Consult the dealer or an experienced radio/TV technician for help.
2. This device complies with FCC radiation exposure limits set forth for an uncontrolled environment.
3. This device complies with Part 15 of the FCC Rules. Operation is subject to the following two conditions: (1) this device may not cause harmful interference, and (2) this device must accept any interference received, including interference that may cause undesired operation.
4. FCC Application for FCC ID: QISADAPTER-2000D

CAUTION

Any changes or modifications not expressly approved by the party responsible for compliance could void the user's authority to operate the equipment.