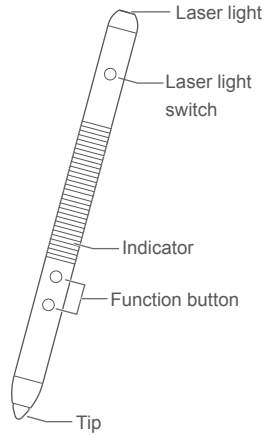


Quick Start



of following Directives:
EMC Directive: 2004/108/EC
RoHS Directive: 2011/65/EU
For the declaration of conformity, visit the web site www.huaweidevice.com/certification.

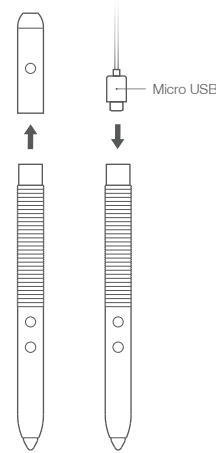
The following marking is included in the product:



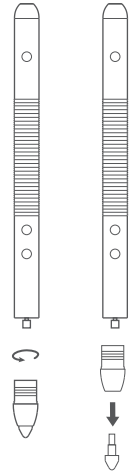
Copyright © Huawei Technologies Co., Ltd. 2015. All rights reserved. THIS DOCUMENT IS FOR INFORMATION PURPOSES ONLY AND DOES NOT CONSTITUTE ANY KIND OF WARRANTY.

9672XXXX_01

Charging



Changing the pen tip



Safety Information

Battery safety

- Keep the battery away from excessive heat and direct sunlight. Do not place it on or in heating devices, such as microwave ovens, stoves, or radiators. Batteries may explode if overheated.
- If the battery leaks, ensure that the electrolyte does not make direct contact with your skins or eyes. If the electrolyte touches your skins or splashes into your eyes, immediately flush with clean water and consult a doctor.
- If the battery is improperly replaced, it may explode. Replace the battery with the same or equivalent type only.
- Do not put batteries in fire as they may explode. Damaged batteries may also explode.

- Whether defective items or components are to be replaced or repaired shall be left to the sole discretion of Supplier. In case of replacement of a part, the defective part removed from the unit becomes the property of Huawei Technologies Co.,Ltd. ('HUAWEI').
- EXCEPT FOR THE EXPRESS WARRANTIES SET FORTH ABOVE, HUAWEI GRANTS NO OTHER WARRANTIES, EXPRESS OR IMPLIED, BY STATUTE OR OTHERWISE, REGARDING THE PRODUCT, FITNESS FOR ANY PURPOSE OR OTHERWISE. HUAWEI SHALL NOT BE LIABLE

- Dispose of used batteries in accordance with local regulations. Improper battery use may lead to fire, explosion, or other hazards.

Disposal and recycling information



This symbol (with or without a solid bar) on the device, batteries (if included), and/or the packaging, indicates that the device and its electrical accessories (for example, a headset, adapter, or cable) and batteries should not be disposed of as household garbage. These items should not be disposed of as unsorted municipal waste and should be taken to a certified collection point for

FOR THE LOSS OF USE OF THE PRODUCT, INCONVENIENCE, LOSS OR ANY OTHER CONSEQUENTIAL DAMAGE, ARISING OUT OF THE USE OF, OR INABILITY TO USE THE PRODUCT OR FOR BREACH OF ANY EXPRESS OR IMPLIED WARRANTY.

- The product just can get in warranty service from the country or area where you have purchased it.

recycling or proper disposal. For more detailed information about device or battery recycling, contact your local city office, household waste disposal service, or retail store. Disposal of the device and batteries (if included) is subject to WEEE Directive Recast (Directive 2012/19/EU) and Battery Directive (Directive 2006/66/EC). The purpose of separating WEEE and batteries from other waste is to minimize the potential environmental impacts and human health risk of any hazardous substances that may be present.

Reduction of hazardous substances

This device is compliant with the REACH Regulation [Regulation (EC) No 1907/2006] and RoHS Directive Recast (Directive 2011/65/EU). Batteries (if included) are compliant with the Battery Directive (Directive 2006/66/EC). For up-to-date information about REACH and RoHS compliance, please visit the web site www.huaweidevice.com/certification. EU regulatory conformance Hereby, Huawei Technologies Co., Ltd. declares that this device is in compliance with the essential requirements and other relevant provisions