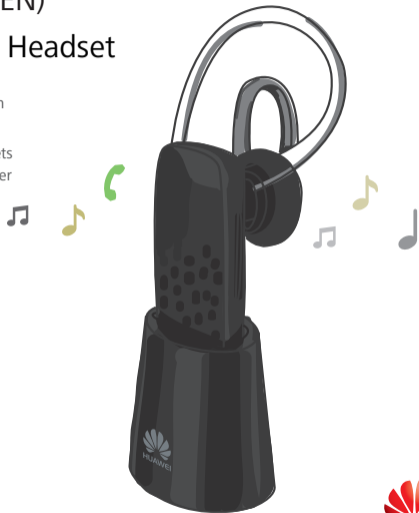


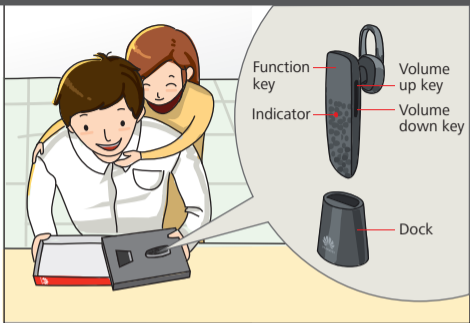
Colortooth (US EN)

HUAWEI Bluetooth Headset

- Noise reduction to deliver premium audio performance
- Intelligent deep sleep mode that lets the device stay on standby for longer
- Affixable dock
- Advanced Audio Distribution Profile (A2DP) to play music on other devices
- Battery level indication for iOS devices
- Simultaneous connection to two mobile phones
- Voice prompts
- Controls to answer or ignore calls
- Fast and simple redial function



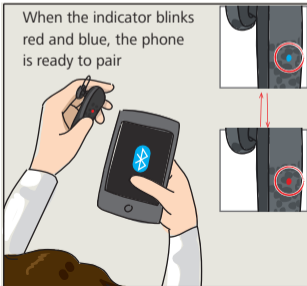
Home

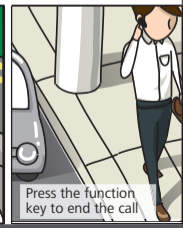
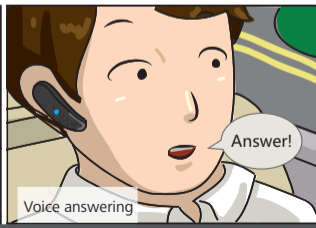


On the way to work



When the indicator blinks red and blue, the phone is ready to pair





Office



Press the function key to call

Press and hold the function key for 2 seconds to switch back to the phone





On the way home



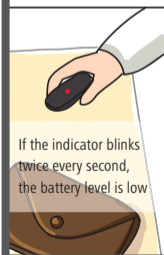
Press the function key to redial



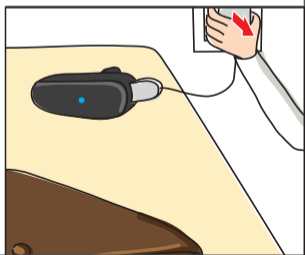
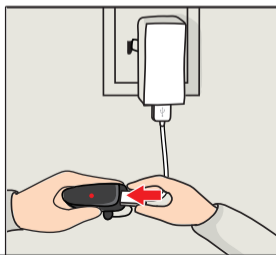
Okay, thanks.
See you tomorrow.



Press and hold the volume up and down keys to play music



If the indicator blinks twice every second, the battery level is low



Operation tips

Using the function key

- When the AM04 is powered off, press and hold the function key for 2 to 4 seconds to power on the AM04 or more than 4 seconds to pair the AM04 with another device.
- Press the function key to answer a call or press and hold the function key for 2 to 4 seconds to ignore a call.
- When the AM04 is powered on and connected to a mobile phone, press the function key twice to redial the last number dialed or press and hold the function key for more than 4 seconds to power off the AM04.

Pairing with two mobile phones

1. Pair the AM04 with the first mobile phone. Then power off the AM04.
2. Press and hold the function key for more than 4 seconds to pair the AM04 with the second mobile phone.
3. Re-pair the AM04 with the first mobile phone.

If the pairing is successful, you can use the AM04 to handle calls on both mobile phones and listen to music from the second mobile phone.



The first mobile phone may display a "No media" message. In this case, you can use the AM04 to handle calls, but not to listen to music from the first phone.

Voice answering

When a call is received, you will hear "Say a command: Answer, Ignore." To answer the call, say "Answer." To ignore the call, say "Ignore."

Controlling music playback

When the AM04 is powered on and connected to a mobile phone, press and hold the volume up and down keys simultaneously for 2 to 4 seconds to access the music playback screen.

During music playback, press and hold the volume up or down key for 2 to 4 seconds to switch between songs, or press and hold the volume up and down keys simultaneously for 1 second or more to pause or continue the playback.

Deep sleep mode

The Bluetooth range for the AM04 is 10 meters (32.8 feet). If this range is exceeded or there are too many obstacles between the AM04 and a Bluetooth capable device, the AM04 may disconnect from the device.

Within 60 minutes of disconnection, if the AM04 comes within the Bluetooth range or obstacles are removed, the AM04 automatically connects to the two devices to which it most recently connected. If the AM04 remains disconnected for more than 60 minutes, it automatically enters deep sleep mode (a powered-off state). To use the AM04 again, press and hold the function key for 2 to 4 seconds to power it on.

Safety information

- Avoid dusty, damp, or dirty environments. Avoid magnetic fields. Using the device in these environments may result in circuit malfunctions.
- Keep the device away from sources of heat and fire, such as a heater, microwave oven, stove, water heater, radiator, or candle.
- Keep the device and accessories dry. Do not attempt to dry it with an external heat source, such as a microwave oven or hair dryer.
- Avoid collision, which may lead to device malfunctions, overheating, fire, or explosion.

- Use a clean, soft, and dry cloth to clean the device and accessories. Before you clean or maintain the device, stop using it.
- Ideal operating temperatures are 5°C to 45°C. Ideal storage temperatures are -20°C to 55°C. Extreme heat or cold may damage your device or accessories.
- Do not expose your device to direct sunlight (such as on a car dashboard) for prolonged periods.
- The device and its accessories are not intended for use by children. Children should only use the device with adult supervision.
- Comply with all precautions with regard to child's safety. Letting children play with the device or its accessories may be dangerous. The device includes detachable parts that may present a choking hazard. Keep away from children.
- The device has a built-in, non-removable battery. Do not attempt to remove the battery, otherwise the device may be damaged. To replace the battery, take the device to an authorized service center.
- If the device has not been used for a long time, charge the battery before you turn on the device.
- Do not dismantle or remanufacture the device and its accessories. This voids the warranty and releases the manufacturer from liability for damage. In case of damage, contact an authorized service center for assistance or repair.

Environmental protection

- The device and its accessories (if included), such as the power adapter, headset, and battery should not be disposed of with household garbage.
- Disposal of the device and its accessories is subject to local regulations. Support proper collection and recycling.

Disposal and recycling information



This symbol (with or without a solid bar) on the device, batteries (if included), and/or the packaging, indicates that your device, its electrical accessories (for example, a headset, adapter, or cable), and batteries should not be disposed of as household waste. These items should be taken to a certified collection point for recycling or proper disposal.

For more information about recycling your device or its batteries, contact your local council, household waste disposal service, or retail store.

Disposal of your device and its batteries (if included) is subject to WEEE Directive Recast (Directive 2012/19/EU) and Battery Directive (Directive 2006/66/EC). Separating WEEE and batteries from other waste minimises the potential environmental impacts and human health risks presented by hazardous substances.

Reduction of hazardous substances

Your device complies with the REACH Regulation [Regulation (EC) No 1907/2006] and RoHS Directive Recast (Directive 2011/65/EU). Batteries (if included) are compliant with the Battery Directive (Directive 2006/66/EC). For up-to-date information about REACH and RoHS compliance, please visit the website www.huaweidevice.com/certification.

EU regulatory conformance

Statement

Huawei Technologies Co., Ltd. hereby declares that this device complies with the essential requirements and

other relevant provisions of Directive 1999/5/EC.

For the declaration of conformity, visit the website www.huaweidevice.com/certification.

The following marking is included in the product:



This device may be operated in all member states of the EU.

--Observe national and local regulations where this device is used.

--This device may be restricted for use, depending on the local network.

FCC Regulatory Compliance

FCC RF warning statement: The device has been evaluated to meet general RF exposure requirement. The device can be used in portable exposure condition without restriction.

FCC statement

This equipment has been tested and found to comply with the limits for a Class B digital device, pursuant to Part 15 of the FCC Rules. These limits are designed to provide reasonable protection against harmful interference in a residential installation. This equipment generates, uses and can radiate radio frequency energy and, if not installed and used in accordance with the instructions, may cause harmful interference to radio communications.

However, there is no guarantee that interference will not occur in a particular installation. If this equipment does cause harmful interference to radio or television reception, which can be determined by turning the equipment off and on, the user is encouraged to try to correct the interference by one or more of the following measures:

--Reorient or relocate the receiving antenna.

--Increase the separation between the equipment and receiver.

--Connect the equipment into an outlet on a circuit different from that to which the receiver is connected.

--Consult the dealer or an experienced radio/TV technician for help.

This device complies with Part 15 of the FCC Rules. Operation is subject to the following two conditions: (1) this device may not cause harmful interference, and (2) this device must accept any interference received, including interference that may cause undesired operation.

Caution: Any changes or modifications to this device not expressly approved by Huawei Technologies Co., Ltd. for compliance could void the user's authority to operate the equipment.



Copyright © Huawei Technologies Co., Ltd. 2014. All rights reserved.

Please visit <http://consumer.huawei.com/en/support/hotline> for recently updated hotline and email address in your country or region.