

HUAWEI K4505 HSPA+ USB Stick

Quick Start

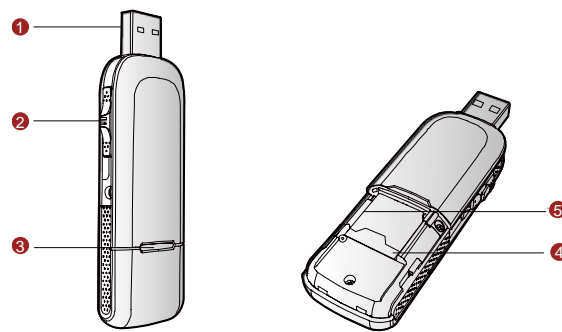
Thank you for choosing this USB Stick. With the USB Stick, you can access the Internet through wireless network at a high speed.

Note:

This manual describes the appearance, installation and removal of the USB Stick. For the operation of the management program, refer to the User Manual.

Getting to Know Your USB Stick

The following figure shows the appearance of the USB Stick. It is only for your reference. The actual product may differ.



① USB Interface

It connects the USB Stick to a computer.

② Stick

It reveals the USB connector

③ Indicator

It indicates the status of the USB Stick.

- Green, blinking (on for 100ms and off for 100ms; then on for 100ms and off for 2700ms), the USB Stick is powered on.
- Green, blinking (on for 100ms and off for 2900ms), the USB Stick is registered to a GSM/GPRS/EDGE network.
- Blue, blinking (on for 100ms and off for 2900ms), the USB Stick is registered to a UMTS network.

- Green, on, the USB Stick is connected to a GPRS/EDGE network.
- Blue, on, the USB Stick is connected to a WCDMA network.
- Cyan, on, the USB Stick is connected to a HSPA+ network.
- Off, the USB Stick is removed.

4 SIM/USIM Card Slot

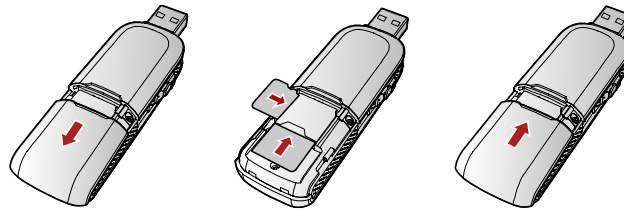
It is where you insert the subscriber identity module/UMTS subscriber identity module (SIM/USIM) card.

5 Micro SD Card Slot

It is where you insert the Micro Secure Digital Memory (SD) card

Getting Your USB Stick Ready

1. Remove the back cover of the USB Stick.
2. Insert the USIM/SIM card and the micro SD card into the card slots. Make sure that the cards are properly inserted.
3. Install the back cover of the USB Stick.



Note:

Do not remove the Micro SD card when it is being used. Removing the card during an operation may damage the Micro SD card as well as the device, and data stored on the card may be corrupted.

Installation/Removal Guide

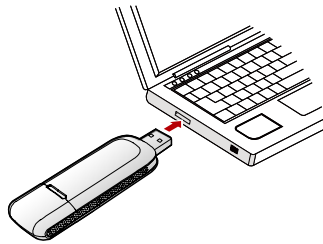
On different operating systems (OSs), the installation and removal procedures may differ. Follow the system prompts during operation.

Connecting the USB Stick with a Computer

Note:

First, power on the computer. Then connect the USB Stick with the computer. Otherwise, the USB Stick cannot be installed as normal.

1. Plug the USB Stick into the USB interface of the laptop or desktop computer.



2. The OS automatically detects and recognises new hardware and starts the installation wizard.
3. Follow the prompts of the installation wizard.
4. After the program is installed, a shortcut icon for the USB Stick management program is displayed on the desktop.

Starting the Management Program

After the USB Stick is installed, the management program is launched automatically. Then every time the USB Stick is connected to the PC, the management program is launched automatically.

You can also double-click the shortcut icon on the desktop to launch the management program.

Removing the USB Stick

Exit the management program and then remove the USB Stick directly.

Removing the Management Program

1. Click Start Menu.
2. Click Control Panel.
3. Click Add/Remove Program to remove the management program of the USB Stick.

Note:

Before removing the management program, exit the management program.

Version: V100R001_01 Part Number: 31010AEG