

Copyright © 2008 Huawei Technologies Co., Ltd.

All Rights Reserved

No part of this document may be reproduced or transmitted in any form or by any means without prior written consent of Huawei Technologies Co., Ltd.

Trademarks and Permissions



**HUAWEI** and other Huawei trademarks are trademarks of Huawei Technologies Co., Ltd.

All other trademarks and trade names mentioned in this document are the property of their respective holders.

Notice

The information in this document is subject to change without notice. Every effort has been made in the preparation of this document to ensure accuracy of the contents, but all statements, information, and recommendations in this document do not constitute the warranty of any kind, express or implied.

## Table of Contents

What Is in Your Package .....	2
Getting to Know Your E166 .....	3
Preparation .....	5
Installation/Removal Guide .....	7
Safety Information .....	10
Acronyms and Abbreviations .....	16

Thank you for choosing Huawei E166 HSDPA USB Stick (hereinafter referred to as the E166). With the E166, you can access the Internet through wireless network at a high speed.

**Note: This manual describes the appearance, installation and removal of the E166. For the operation of the management program, refer to the *User Manual*.**

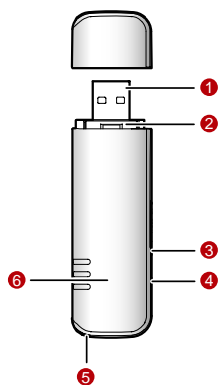
## What Is in Your Package

The package of your E166 contains the following items:

- One E166
- One *Quick Start*
- One USB cable

## Getting to Know Your E166

The following figure shows the appearance of the E166. It is only for your reference. The actual product may differ.



**1** USB Interface

It connects the E166 to a computer.

**2** SIM/USIM Card Slot

It is where you insert the subscriber identity module/UMTS subscriber identity

module (SIM/USIM) card.

### 3 Micro SD Card Slot

It is where you insert the Micro Secure Digital Memory (SD) card

### 4 External Antenna Jack

It connects the E166 to an external antenna.

### 5 Strap Hole

### 6 Indicator

It indicates the status of the E166.

Colour	Status	Meaning
Green	Blinking (on for 100ms and off for 100ms; then on for 100ms and off for 2700ms)	The E166 is powered on.
Green	Blinking (on for 100ms and off for 2900ms)	The E166 is registered to a GSM/GPRS/EDGE network.
Blue	Blinking (on for 100ms and off for 2900ms)	The E166 is registered to a UMTS network.
Green	On	The E166 is connected to a GPRS/EDGE network.
Blue	On	The E166 is connected to a WCDMA network.
Cyan	On	The E166 is connected to a HSDPA network.
-	Off	The E166 is removed.

## Preparation

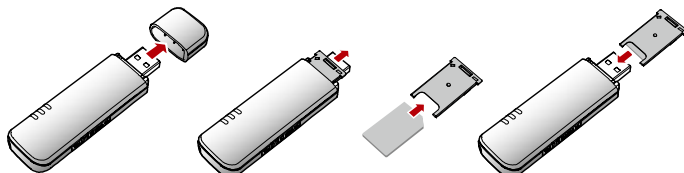
### Requirements for the Computer

To use the E166, the computer should meet the following requirements:

- USB Type A Receptacle, Compatible with USB 2.0 Full Speed.
- Windows 2000 SP4, Windows XP SP2, Windows Vista.
- Your computer's hardware system should meet or exceed the recommended system requirements for the installed version of OS.
- Resolution for the display: 800 × 600 or above.

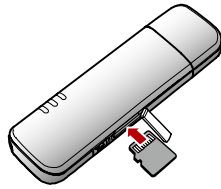
### Getting Your E166 Ready

- Remove the USIM/SIM card slot from the E166.
- Insert the USIM/SIM card into the card slot.
- Insert the card slot into the E166.



## Inserting the Micro SD Card (optional)

Insert the micro SD card into the E166, as shown in the following figure.



**Note: Do not remove the micro SD card when it is being used. Removing the card during an operation may damage the micro SD card as well as the device, and data stored on the card may be corrupted.**

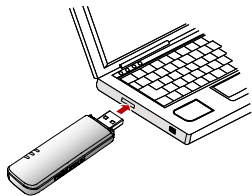
## Installation/Removal Guide

On different operating systems (OSs), the installation and removal procedures may differ. Follow the system prompts during operation.

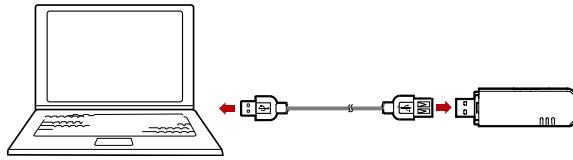
### Connecting the E166 with a Computer

**Note: First, power on the computer. Then connect the E166 with the computer. Otherwise, the E166 cannot be installed as normal.**

- Plug the E166 into the USB interface of the laptop or desktop computer.



- You can connect the E166 to a laptop or desktop computer using the USB cable for better signals.



- The OS automatically detects and recognises new hardware and starts the installation wizard.
- Follow the prompts of the installation wizard.
- After the program is installed, a shortcut icon for the E166 management program is displayed on the desktop.

## Starting the Management Program

After the E166 is installed, the management program is launched automatically. Then every time the E166 is connected to the PC, the management program is launched automatically.

You can also double-click the shortcut icon on the desktop to launch the management program.

## Removing the E166

Remove the E166 directly.



## Removing the Management Program

- Click **Start Menu**.
- Click **Control Panel**.
- Click **Add/Remove Program** to remove the management program of the E166.

**Note:** Before removing the management program, exit the management program.

## Safety Information

Read the safety information carefully to ensure the correct and safe use of your wireless device.

### Interference

Do not use your wireless device if using the device is prohibited or when it cause danger or interference with electric devices.

### Medical Device

- Do not use your wireless device and follow the rules and regulations set forth by the hospitals and health care facilities.
- Some wireless devices may affect the performance of the hearing aids. For any such problems, consult your service provider.
- If you are using an electronic medical device, consult the doctor or device manufacturer to confirm whether the radio wave affects the operation of this device.

### Area with Inflammables and Explosives

To prevent explosions and fires in areas that are stored with inflammable and explosive devices, do not use your wireless device and observe the rules. Areas stored with inflammables and explosives include but are not limited to the following:

- Gas station
- Fuel depot (such as the bunk below the deck of a ship)
- Container/Vehicle for storing or transporting fuels or chemical products

- Area where the air contains chemical substances and particles (such as granule, dust, or metal powder)
- Area indicated with the "Explosives" sign
- Area indicated with the "Power off bi-direction wireless equipment" sign
- Area where you are generally suggested to stop the engine of a vehicle

### Traffic Security

- Observe local laws and regulations while using the wireless device. To prevent accidents, do not use your wireless device while driving.
- RF signals may affect electronic systems of motor vehicles. For more information, consult the vehicle manufacturer.
- In a motor vehicle, do not place the wireless device over the air bag or in the air bag deployment area. Otherwise, the wireless device may hurt you owing to the strong force when the air bag inflates.
- Observe the rules and regulations of airline companies. When boarding, switch off your wireless device. Otherwise, the radio signal of the wireless device may interfere with the plane control signals.

### Safety of Children

Do not allow children to use the wireless device without guidance. Small and sharp components of the wireless device may cause danger to children or cause suffocation if children swallow the components.

### Environment Protection

Observe the local regulations regarding the disposal of your packaging materials, used wireless device and accessories, and promote their recycling.

## WEEE Approval

The wireless device is in compliance with the essential requirements and other relevant provisions of the Waste Electrical and Electronic Equipment Directive 2002/96/EC (WEEE Directive).

## RoHS Approval

The wireless device is in compliance with the restriction of the use of certain hazardous substances in electrical and electronic equipment Directive 2002/95/EC (RoHS Directive).

## Laws and Regulations Observance

Observe laws and regulations when using your wireless device. Respect the privacy and legal rights of the others.

## Care and Maintenance

It is normal that your wireless device gets hot when you use or charge it. Before you clean or maintain the wireless device, stop all applications and disconnect the wireless device from your PC.

- Use your wireless device and accessories with care and in clean environment. Keep the wireless device from a fire or a lit cigarette.
- Protect your wireless device and accessories from water and vapor and keep them dry.
- Do not drop, throw or bend your wireless device.
- Clean your wireless device with a piece of damp and soft antistatic cloth. Do not use any chemical agents (such as alcohol and benzene), chemical detergent, or powder to clean it.

- Do not leave your wireless device and accessories in a place with a considerably low or high temperature.
- Use only accessories of the wireless device approved by the manufacture. Contact the authorized service center for any abnormality of the wireless device or accessories.
- Do not dismantle the wireless device or accessories. Otherwise, the wireless device and accessories are not covered by the warranty.

## Emergency Call

This wireless device functions through receiving and transmitting radio signals. Therefore, the connection cannot be guaranteed in all conditions. In an emergency, you should not rely solely on the wireless device for essential communications.

## Specific Absorption Rate (SAR)

Your wireless device is a radio transmitter and receiver. It is designed not to exceed the limits for exposure to radio waves recommended by international guidelines. These guidelines were developed by the independent scientific organization ICNIRP and include safety margins designed to assure the protection of all persons, regardless of age and health.

The guidelines use a unit of measurement known as the Specific Absorption Rate, or SAR. The SAR limit adopted by the European is 2.0 W/kg and the highest SAR value for this device when tested complied with this limit.

## Body Worn Operation

Important safety information regarding radio frequency radiation (RF) exposure

This equipment complies with FCC radiation exposure limits set forth for an uncontrolled environment. End users must follow the specific operating

instructions for satisfying RF exposure compliance. To maintain compliance with FCC RF exposure compliance requirements, please follow operation instruction as documented in this manual.

## Regulatory Information

The following approvals and notices apply in specific regions as noted.

### CE Approval (European Union)

The wireless device is approved to be used in the member states of the EU. The wireless device is in compliance with the essential requirements and other relevant provisions of the Radio and Telecommunications Terminal Equipment Directive 1999/5/EC (R&TTE Directive).

Federal Communications Commission Notice (United States): Before a wireless device model is available for sale to the public, it must be tested and certified to the FCC that it does not exceed the limit established by the government-adopted requirement for safe exposure.

The SAR limit adopted by the USA and Canada is 1.6 watts/kilogram (W/kg) averaged over one gram of tissue. The highest SAR value reported to the FCC for this device type was compliant with this limit.

### FCC Statement

This device complies with Part 15 of the FCC Rules. Operation is subject to the following two conditions: (1) this device may not cause harmful interference, and (2) this device must accept any interference received, including interference that may cause undesired operation.

### NOTICE:

This device complies with Part 15 of the FCC Rules [and with RSS-210 of Industry Canada].

Operation is subject to the following two conditions:

- (1) this device may not cause harmful interference, and
- (2) this device must accept any interference received, including interference that may cause undesired operation.

NOTICE:

Changes or modifications made to this equipment not expressly approved by (manufacturer name) may void the FCC authorization to operate this equipment.

NOTE: This equipment has been tested and found to comply with the limits for a Class B digital device, pursuant to Part 15 of the FCC Rules. These limits are designed to provide reasonable protection against harmful interference in a residential installation. This equipment generates, uses and can radiate radio frequency energy and, if not installed and used in accordance with the instructions, may cause harmful interference to radio communications. However, there is no guarantee that interference will not occur in a particular installation. If this equipment does cause harmful interference to radio or television reception, which can be determined by turning the equipment off and on, the user is encouraged to try to correct the interference by one or more of the following measures:

- Reorient or relocate the receiving antenna.
- Increase the separation between the equipment and receiver.
- Connect the equipment into an outlet on a circuit different from that to which the receiver is connected.
- Consult the dealer or an experienced radio/TV technician for help.

CAUTION:

The USB Stick has been tested with specific integral antenna for SAR compliance with three notebook computers having vertical and horizontal USB slots.

The device can be used in notebook computers with substantially similar physical dimensions, construction, and electrical and RF characteristics.

Note: If this USB Stick is intended for use in any other portable device, you are responsible for separate approval to satisfy the SAR requirements of Part 2.1093 of FCC rules.

SAR compliance has been established in typical laptop computer(s) with USB slot, and product could be used in typical laptop computer with USB slot. Other application like handheld PC or similar device has not been verified and may not compliance with related RF exposure rule and such use shall be prohibited.

This transmitter and its antenna(s) must not be co-located or operating in conjunction with any other antenna or transmitter.

## Acronyms and Abbreviations

EDGE	Enhanced Data Rates for GSM Evolution
GPRS	General Packet Radio Service
GSM	Global System for Mobile Communications
HSDPA	High Speed Downlink Packet Access



OS	Operating System
PIN	Personal Identification Number
SAR	Specific Absorption Rate
SIM	Subscriber Identity Module
UMTS	Universal Mobile Telecommunications System
USB	Universal Serial Bus
USIM	UMTS Subscriber Identity Module
WCDMA	Wideband Code Division Multiple Access

Version: V100R001\_01 Part Number: 31018856