

Copyright © 2007 Huawei Technologies Co., Ltd.

All Rights Reserved

No part of this manual may be reproduced or transmitted in any form or by any means without prior written consent of Huawei Technologies Co., Ltd.

Trademarks



HUAWEI and HUAWEI are trademarks of Huawei Technologies Co., Ltd. All other trademarks mentioned in this manual are the property of their respective holders.

Notice

The information in this manual is subject to change without notice. Every effort has been made in the preparation of this manual to ensure accuracy of the contents, but all statements, information, and recommendations in this manual do not constitute the warranty of any kind, expressed or implied.

Table of Contents

Getting Started	1
Preparing E226	2
Installation Instructions	2
Safety Information	5

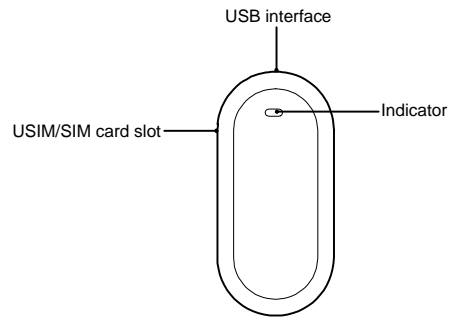
Thank you for choosing E226 HSDPA USB Modem (hereinafter referred to as the E226) from Huawei.

Note: This manual briefs the profile of the E226, and the preparation, and installation process. For the operation of the management program, see User Manual..

Getting Started

1. Getting to Know the E226

The following figure shows the E226 profile.



2. Indicator

This indicator indicates the status of E226.

- Off: The E226 is powered off.

- Green, Blinking twice every 2.7 seconds: The E226 is searching for a network or no network is available.
- Green, Blinking twice every 2.9 seconds: The GSM network is normal.
- Blue, Blinking once every 2.9 seconds: The WCDMA network is normal.
- Green: GPRS data service is established.
- Cyan: HSDPA data service is established.
- Blue: WCDMA data service is established.

3. Computer Configuration Requirements

To use the E226, configure a computer according to the following items:

- Central processing unit (CPU): Pentium 4, 1 GHz or above
- Memory: 128 MB RAM or above
- Hard disk: 50 MB or above
- Operating system (OS): Windows XP, Windows 2000, or Windows Vista
- Universal serial bus (USB) modem interface: USB 2.0 full speed
- Display resolution: 800 × 600 or above (1024 × 768 is recommended)

Note:

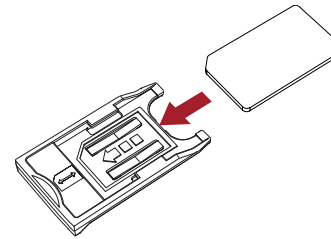
- Improper configuration may degrade the computer performance.

1

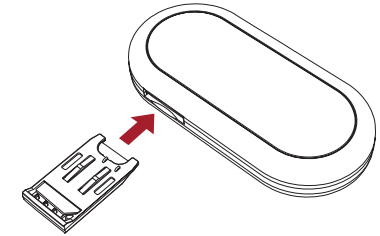
- For Windows XP, it is recommended to install patches such as **Service Pack 2** or above.
- For Windows 2000, it is recommended to install patches such as **Service Pack 4** or above.

Preparing E226

- 1) Remove the UMTS subscriber identity module/subscriber identity module (USIM/SIM) card slot from the E226. Then insert the USIM/SIM card into the card slot, as shown in the following figure. Make sure that the USIM/SIM card is fully in place.



- 2) Insert the card slot into the E226, as shown in the following figure.



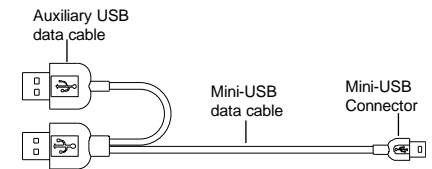
Installation Instructions

The installation procedures of the E226 Manager vary with operating systems (OSs). Refer to the actual installation instructions during the installation process.

1. Connecting the E226 with a Computer

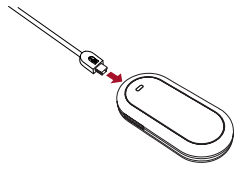
Note: First, power on a computer. Then connect the E226 with the computer. Otherwise, the normal installation of the E226 can be affected.

The following figure is the sketch map of the data cable.

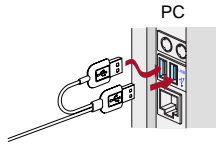



2

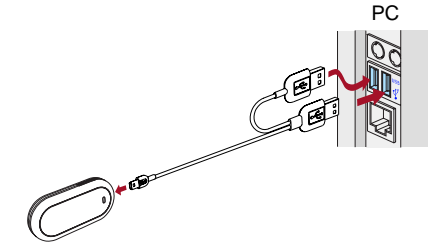
- 1) Plug the mini-universal series bus (USB) connector into the E226.



- 2) Plug the connectors of the main USB data cable and the auxiliary USB data cable into the USB interfaces of the computer.



- 3) The OS automatically detects and recognizes the new hardware and displays  on the status area of the desktop, indicating that the E226 is connected to the computer successfully.



2. Installing the E226 Manager


- 1) Connect the E226 to a computer.
- 2) The installation wizard automatically starts. If the installation wizard does not respond, double-click the **AutoRun.exe** file in the driver path to manually install the E226 Manager.
- 3) Follow the instructions to install the E226 Manager.

Note: Do not disconnect the E226 during the installation process.

- 4) If the installation succeeds, the shortcut icon of the Manager appears on the desktop.

3. Removing the E226

To remove the E226, use the hardware deleting function of Windows.

- 1) Double-click  on the status area of the desktop; the "Safely Remove Hardware" prompt is displayed.
- 2) Select "Huawei Mass Storage USB Device" to stop.
- 3) At the prompt, remove the E226.

Safety Information

Please read the safety information carefully to ensure the correct and safe use of your wireless device.

General Recommendations for Use

Always handle your wireless device with care and keep it in a clean and dust-free place. Do not expose your wireless device to open flames or lit tobacco products.

- Always keep your wireless device dry.
- Do not drop, throw or try to bend your wireless device.
- Do not paint or scratch your wireless device.
- Do not attempt to disassemble your wireless device. Doing so will void warranty. Only authorized personnel are allowed to do so.
- A separation distance of at least 20 cm must be kept between the antenna used for this transmitter and all persons.
- Keep your wireless device in normal temperature. Your wireless device can only operate between -5°C and +55 °C.
- Use approved accessories only. Do not connect your wireless device to any incompatible products.

Obey Laws and Regulations

- Do not operate your wireless device where it may be unsafe to do so or where you are required not to do so.
- To deactivate your wireless device, close all applications using the wireless device first and then remove the wireless device from your PC.
- Obey all local laws, regulations, rules, orders, signs and notices while using the wireless device. Signs about the use of mobile phones should also be obeyed as referring to other wireless equipment including wireless devices.

Electronic Device

- Deactivate your wireless device near high-precision electronic devices. The wireless device may affect the performance of these devices.
- Such devices include hearing aids, pacemakers, fire alarm systems, automatic gates, and other automatic-control devices. If you are using an electronic medical device, consult the device manufacturer and confirm whether the radio wave affects the operation of this electronic device.
- Pacemaker manufacturers recommend that a minimum separation of 15 cm be maintained between a wireless device and a pacemaker to avoid potential interference with the

pacemaker. Deactivate your wireless device, if it may have disturbance to the pacemaker.

Deactivate in Explosive Areas

Deactivate your wireless device where the air is potentially explosive. It is rare, but your PC could generate sparks.

Deactivate in Blasting Areas

Deactivate your wireless device where blasting is in progress. Remote-controlled RF devices are often used at construction sites to set off blasting.

Deactivate in Aircrafts

Deactivate your wireless device before boarding or in any aircraft. Wireless devices can cause interference in aircrafts.

Deactivate at Hospitals

Obey regulations or rules at hospitals. Deactivate your wireless device near medical equipment. Wireless devices can cause interference to cardiac pacemakers, implanted defibrillators or other medical equipment.

Deactivate near Hearing Devices

Deactivate your wireless device near hearing devices. People with hearing aids may

experience interfering noises near wireless devices.

Recommendations for Children

Do NOT allow children to play with your wireless device. They could hurt themselves or others, or could accidentally damage the wireless device. Your wireless device contains small parts with sharp edges that may cause an injury or a choking hazard.

Deactivate While Driving

Do not use the wireless device while driving.

Immunity to Interference

Your wireless device is immune to interferences caused by audible signals.

Cleaning and Maintenance

- Before you clean or maintain the wireless device, close all applications using wireless device and remove your wireless device from your PC.
- Clean your wireless device with a piece of soft antistatic cloth.
- If the wireless device or any of its accessories does not work, turn to an authorized service center for help.

Environmental Protection

Observe the local regulations regarding the disposal of your packaging materials, old wireless device and its accessories. Please promote their recycling.

SIM/USIM Cards

While inserting or removing the SIM card, protect yourself against electrostatic discharge (ESD). Do not touch the connector of the SIM card. As a precaution, always make sure that the wireless device is already in your hand before you insert or remove the SIM card.

Restart on ESDs

Software will attempt to re-initialize a connection once a substantial electrostatic discharge causes the device to reset. If the software is not operational after an ESD, restart the modem software application.

Agency/Regulatory Information

The wireless device is approved for use in many regions of the world. In these regions, the device meets all radio frequency exposure requirements. The following approvals and notices apply in specific regions as noted.

CE Approval (European Union)

The wireless device is approved to be used in

the member states of the EU. Huawei declares that the wireless device is in compliance with the essential requirements and other relevant provisions of the Radio and Telecommunications Terminal Equipment Directive 1999/5/EC (R&TTE Directive).

Radiofrequency radiation exposure Information

This equipment complies with FCC radiation exposure limits set forth for an uncontrolled environment. This equipment should be installed and operated with minimum distance of 20 cm between the radiator and your body.

This transmitter must not be co-located or operating in conjunction with any other antenna or transmitter.

FCC Statement

This equipment has been tested and found to comply with the limits for a Class B digital device, pursuant to Part 15 of the FCC Rules. These limits are designed to provide reasonable protection against harmful interference in a residential installation. This equipment generates, uses and can radiate radio frequency energy and, if not installed and used in accordance with the instructions, may cause harmful interference to radio communications. However, there is no guarantee that interference will not occur in a particular installation. If

this equipment does cause harmful interference to radio or television reception, which can be determined by turning the equipment off and on, the user is encouraged to try to correct the interference by one or more of the following measures:

- Reorient or relocate the receiving antenna.
- Increase the separation between the equipment and receiver.
- Connect the equipment into an outlet on a circuit different from that to which the receiver is connected.
- Consult the dealer or an experienced radio/TV technician for help.

This device complies with Part 15 of the FCC Rules and with RSS-210 of Industry Canada. Operation is subject to the following two conditions: (1) this device may not cause harmful interference, and (2) this device must accept any interference received, including interference that may cause undesired operation.

Warning: Changes or modifications made to this equipment not expressly approved by HUAWEI may void the FCC authorization to operate this equipment.

Version: V100R001_01

Part Number: 31018107