

Quick Start

Thank you for purchasing the LTE cube. This LTE cube brings you a high speed wireless network connection.

This document will help you understand your LTE cube, so you can start using it right away. Please read this document carefully before using your LTE cube.

For detailed information about the functions and configurations of the LTE cube, refer to the online help on the web management page that comes with the LTE cube.

Getting to know your LTE cube

Note:

- During thunderstorms and rainy weather, turn off and disconnect the LTE cube.
- The LTE cube function descriptions and illustrations in this document are for your reference only. The product you have purchased may vary.

Application scenario

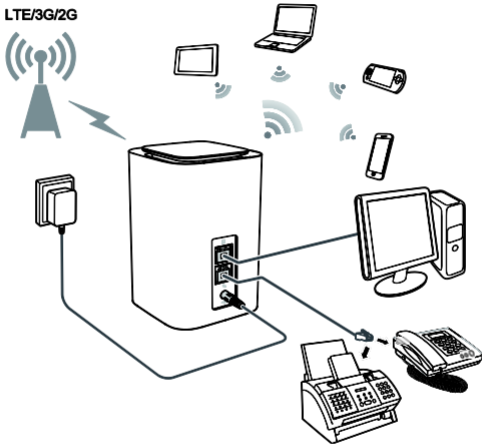
The LTE cube can:

- Provide Internet access for Wi-Fi devices and a computer.
- Connect to a telephone for voice services.

Note:

When connected to a 2G network, the LTE cube supports circuit switched (CS) calls but not VoIP.

- Connect to a fax machine for fax services.
- Expand LAN coverage together with a hub or a switch.



Note:

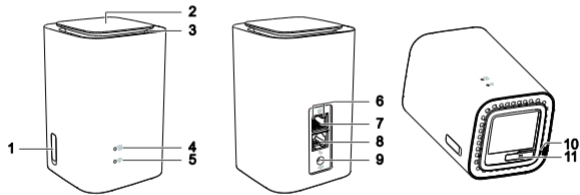
When the LTE cube is in use, you can alter its position or orientation to improve signal reception.

Selecting the installation environment

Obstacles such as concrete and wooden walls will affect the transmission of the network signal. It is recommended that when you install LTE cube you choose an open space.

Keep the LTE cube away from equipment that generates strong magnetic and electric fields, for instance microwaves, refrigerators, and satellite receivers.

Appearance



① External antenna port

Pull out the cover and connect optional external antenna.

② Power button

- Press and hold the power button to power on or off the LTE cube.
- Press the power button to turn on or off the decorative indicator.

③ Decorative indicator

The LTE cube is powering on or this indicator is turned on. You can press the power button to turn off the indicator.

④ Signal indicator

- Steady blue: strong signal strength
- Steady yellow: weak signal strength
- Steady red: no signal

⑤ Wi-Fi indicator


- On: Wi-Fi enabled
- Off: Wi-Fi disabled

Note:


For details about how to manually enable or disable the Wi-Fi function, refer to the WLAN settings section of the online help.

⑥ Network port indicator

- Steady green and yellow off: The LTE cube is connected to a device, but no data is being transmitted.
- Steady green and blinking yellow: Data is being transmitted.
- Both green and yellow off: The LTE cube is not connected to any device.

⑦  **Network port (RJ45)**

Connect to a computer, switch, or other network device.

⑧  **Voice ports (RJ11)**

Connect to a telephone or a fax machine.

⑨  **Power port**

Connect to the LTE cube's power adapter.

⑩ **Reset button**

Press and hold to restore the LTE cube to its factory settings.

Note:

Restoring the default settings of the LTE cube will override all the previous settings.

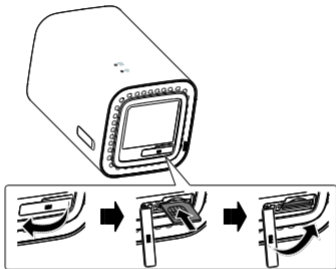
⑪ **Micro-SIM card slot**

Accommodate a micro-SIM card.

Getting started

Installing the micro-SIM card

Install the micro-SIM card according to the illustration.

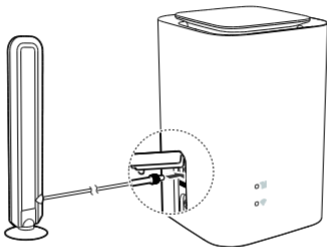


Note:

- When removing the micro-SIM card, gently press the micro-SIM card in, then release. The card will automatically pop out.
- Do not remove the micro-SIM card when the LTE cube is powered on. Doing so will affect the performance of your LTE cube, and data stored on the micro-SIM card may be lost.

(Optional) Connecting to an external antenna

In areas with poor reception, connect an external antenna to the LTE cube's external antenna port to improve signal reception. Install the external antenna according to the illustration.

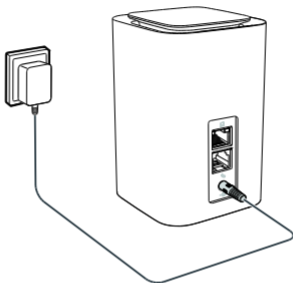


Note:

- Before installing or uninstalling the external antenna, ensure that the LTE cube is powered off and disconnected from the power outlet.
- Do not change another unexpected antenna unless manufacturer provides.
- Only use the external antenna indoors, and do not use it during thunderstorm.
- To optimize the performance of the external antenna, please put the LTE cube at least 1 meter away from it. If you have installed two external antennas, the distance between them should be also greater than 1 meter.

Connecting to a power adapter

Install the power adapter according to the illustration.



Note:

Use the provided power adapter. Use of an incompatible power adapter or one from an unknown manufacturer may cause the LTE cube to malfunction, fail, or could even cause a fire. Such use voids all warranties, whether expressed or implied, on the product.

Logging in to the web management page

The web-based configuration utility can be used for initial LTE cube installation, parameter configuration, and function management through the browser.

The Windows 7 operating system and Internet Explorer 8.0 are used as an example. Ensure that the LTE cube is connected to the computer. Follow these steps to log in to the web management page:

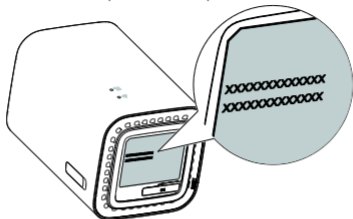
1. Connect LTE cube cables.
2. Configure the computer's IP address so that the IP addresses of the computer and the LTE cube are in the same network segment.

Note:

- The LTE cube's default IP address is **192.168.8.1**, the subnet mask is **255.255.255.0**.
 - It is recommended that you use the automatically obtained IP addresses for the computer and domain name system (DNS) server. If you manually configure the computer IP address, you must set the DNS server IP address to the LTE cube's IP address. Otherwise, you will fail to log in to the web management page.
3. Open the browser, and enter **http://192.168.8.1** in the address box.
 4. Enter the user name and password to log in to the web management page.

Note:

The default user name and password are printed on the LTE cube label.



Copyright © Huawei Technologies Co., Ltd. 2014. All rights reserved.

No part of this manual may be reproduced or transmitted in any form or by any means without prior written consent of Huawei Technologies Co., Ltd. and its affiliates ("Huawei").

The product described in this manual may include copyrighted software of Huawei and possible licensors. Customers shall not in any manner reproduce, distribute, modify, decompile, disassemble, decrypt, extract, reverse engineer, lease, assign, or sublicense the said software, unless such restrictions are prohibited by applicable laws or such actions are approved by respective copyright holders.

Trademarks and Permissions



HUAWEI, HUAWEI, and



are trademarks or registered trademarks of Huawei Technologies Co., Ltd.

LTE is a trademark of ETSI.

Other trademarks, product, service and company names mentioned may be the property of their respective owners.

Notice

Some features of the product and its accessories described herein rely on the software installed, capacities and settings of local network, and therefore may not be activated or may be limited by local network operators or network service providers.

Thus, the descriptions herein may not exactly match the product or its accessories which you purchase.

Huawei reserves the right to change or modify any information or specifications contained in this manual without prior notice and without any liability.

DISCLAIMER

ALL CONTENTS OF THIS MANUAL ARE PROVIDED "AS IS". EXCEPT AS REQUIRED BY APPLICABLE LAWS, NO WARRANTIES OF ANY KIND, EITHER EXPRESS OR IMPLIED, INCLUDING BUT NOT LIMITED TO, THE IMPLIED WARRANTIES OF MERCHANTABILITY AND FITNESS FOR A PARTICULAR PURPOSE, ARE MADE IN RELATION TO THE ACCURACY, RELIABILITY OR CONTENTS OF THIS MANUAL.

TO THE MAXIMUM EXTENT PERMITTED BY APPLICABLE LAW, IN NO EVENT SHALL HUAWEI BE LIABLE FOR ANY SPECIAL, INCIDENTAL, INDIRECT, OR CONSEQUENTIAL DAMAGES, OR LOSS OF PROFITS, BUSINESS, REVENUE, DATA, GOODWILL SAVINGS OR ANTICIPATED SAVINGS REGARDLESS OF WHETHER SUCH LOSSES ARE FORSEEABLE OR NOT.

THE MAXIMUM LIABILITY (THIS LIMITATION SHALL NOT APPLY TO LIABILITY FOR PERSONAL INJURY TO THE EXTENT APPLICABLE LAW PROHIBITS SUCH A LIMITATION) OF HUAWEI ARISING FROM THE USE OF THE PRODUCT DESCRIBED IN THIS MANUAL SHALL BE LIMITED TO THE AMOUNT PAID BY CUSTOMERS FOR THE PURCHASE OF THIS PRODUCT.

Import and Export Regulations

Customers shall comply with all applicable export or import laws and regulations and be responsible to obtain all necessary governmental permits

and licenses in order to export, re-export or import the product mentioned in this manual including the software and technical data therein.

Privacy Policy

To better understand how we protect your personal information, please see the privacy policy at <http://consumer.huawei.com/privacy-policy>.

Safety information

This section contains important information about the operation of your device. It also contains information about how to use the device safely. Read this information carefully before using your device.

Electronic device

Do not use your device if using the device is prohibited. Do not use the device if doing so causes danger or interference with other electronic devices.

Interference with medical equipment

- Follow rules and regulations set forth by hospitals and health care facilities. Do not use your device where prohibited.
- Some wireless devices may affect the performance of hearing aids or pacemakers. Consult your service provider for more information.
- Pacemaker manufacturers recommend that a minimum distance of 15 cm be maintained between a device and a pacemaker to prevent potential interference with the pacemaker. If using a pacemaker, hold the device on the side opposite the pacemaker and do not carry the device in your front pocket.

Areas with flammables and explosives

- Do not use the device where flammables or explosives are stored (in a gas station, oil depot, or chemical plant, for example). Using your device in these environments increases the risk of explosion or fire. In addition, follow the instructions indicated in text or symbols.
- Do not store or transport the device in containers with flammable liquids, gases, or explosives.

Traffic security

- Observe local laws and regulations while using the device. To reduce the risk of accidents, do not use your wireless device while driving.
- Concentrate on driving. Your first responsibility is to drive safely.
- RF signals may affect the electronic systems of motor vehicles. For more information, consult the vehicle manufacturer.
- Do not place the device over the air bag or in the air bag deployment area in a motor vehicle. Doing so may hurt you because of the strong force when the air bag inflates.
- Do not use your device while flying in an aircraft or immediately before boarding. Using wireless devices in an aircraft may disrupt wireless networks, present a hazard to aircraft operation, or be illegal.

Operating environment

- Avoid dusty, damp, or dirty environments. Avoid magnetic fields. Using the device in these environments may result in circuit malfunctions.
- Before connecting and disconnecting cables, stop using the device and disconnect it from the power supply. Ensure that your hands are dry during operation.

- Place the device on a stable surface.
- Keep the device away from electronic appliances that generate strong magnetic or electric fields, such as a microwave oven or refrigerator.
- During thunderstorms, power off your device and remove all cables connected to it to protect against lightning strikes.
- Do not use your device during thunderstorms to protect your device against any danger caused by lightning.
- Ideal operating temperatures are 0°C to +40°C. Ideal storage temperatures are -20°C to +70°C. Extreme heat or cold may damage your device or accessories.
- Keep the device and accessories in a well-ventilated and cool area away from direct sunlight. Do not enclose or cover your device with towels or other objects. Do not place the device in a container with poor heat dissipation, such as a box or bag.
- To protect your device or accessories from fire or electrical shock hazards, avoid rain and moisture.
- Keep the device away from sources of heat and fire, such as a heater, microwave oven, stove, water heater, radiator, or candle.
- Do not place any object, such as a candle or a water container, on the device. If any foreign object or liquid enters the device, immediately stop using it, power it off, and remove all cables connected to it. Then, contact an authorized service center.
- Observe local laws and regulations, and respect the privacy and legal rights of others.
- Do not block device openings. Reserve a minimum of 10 cm around the device to dissipate heat.

- Stop using your device or applications for a while if the device is overheated. If skin is exposed to an overheated device for an extended period, low temperature burn symptoms, such as red spots and darker pigmentation, may occur.
- Do not touch the device's antenna. Otherwise, communication quality may be reduced.
- Do not allow children or pets to bite or suck the device or accessories. Doing so may result in damage or explosion.
- The device should be installed and operated with a minimum distance of 20 cm between the radiator and your body.
- Keep the device in a place with good reception. The distance between the device and other metal materials (such as metal brackets or metal doors and windows) should be greater than 25 cm and the distance between the device should be greater than 30 cm.

Child's safety

- Comply with all precautions with regard to child's safety. Letting children play with the device or its accessories may be dangerous. The device includes detachable parts that may present a choking hazard. Keep away from children.
- The device and its accessories are not intended for use by children. Children should only use the device with adult supervision.

Accessories

- Using an unapproved or incompatible power adapter, charger or battery may cause fire, explosion or other hazards.
- Choose only accessories approved for use with this model by the device manufacturer. The use of any other types of accessories may void the

warranty, may violate local regulations and laws, and may be dangerous. Please contact your retailer for information about the availability of approved accessories in your area.

Power adapter safety

- The power plug is intended to serve as a disconnect device.
- For pluggable devices, the socket-outlet shall be installed near the devices and shall be easily accessible.
- Unplug the power adapter from electrical outlets and the device when not in use.
- Do not drop or cause an impact to the power adapter. If it is damaged, take it to an authorized service center for inspection.
- If the power cable is damaged (for example, the cord is exposed or broken), or the plug loosens, stop using it at once. Continued use may lead to electric shocks, short circuits, or fire.
- Do not touch the power cord with wet hands or pull the power cord to disconnect the power adapter.
- Do not touch the device or the power adapter with wet hands. Doing so may lead to short circuits, malfunctions, or electric shocks.
- If your power adapter has been exposed to water, other liquids, or excessive moisture, take it to an authorized service center for inspection.
- Ensure that the power adapter meets the requirements of Clause 2.5 in IEC60950-1/EN60950-1 and has been tested and approved according to national or local standards.

Cleaning and maintenance

- During storage, transportation, and operation of the device, keep it dry

and protect it from collision.

- Keep the device and accessories dry. Do not attempt to dry it with an external heat source, such as a microwave oven or hair dryer.
- Do not expose your device or accessories to extreme heat or cold. These environments may interfere with proper function and may lead to fire or explosion.
- Avoid collision, which may lead to device malfunctions, overheating, fire, or explosion.
- If the device is not going to be used for an extended period of time, power it off, and remove all cables connected to it.
- If anything unusual occurs (for example, if the device emits smoke or any unusual sound or smell), immediately stop using it, power it off, remove all cables connected to it, and contact an authorized service center.
- Do not trample, pull, or excessively bend any cable. Doing so may damage the cable, causing the device to malfunction.
- Before you clean or maintain the device, stop using it, stop all applications, and disconnect all cables connected to it.
- Do not use any chemical detergent, powder, or other chemical agents (such as alcohol and benzene) to clean the device or accessories. These substances may cause damage to parts or present a fire hazard. Use a clean, soft, and dry cloth to clean the device and accessories.
- Do not place magnetic stripe cards, such as credit cards and phone cards, near the device for extended periods of time. Otherwise the magnetic stripe cards may be damaged.
- Do not dismantle or remanufacture the device and its accessories. This voids the warranty and releases the manufacturer from liability for

damage. In case of damage, contact an authorized service center for assistance or repair.

Environmental protection

- The device and its accessories (if included), such as the power adapter, headset, and battery should not be disposed of with household garbage.
- Disposal of the device and its accessories is subject to local regulations. Support proper collection and recycling.

FCC Regulatory Compliance

FCC statement

This equipment has been tested and found to comply with the limits for a Class B digital device, pursuant to Part 15 of the FCC Rules. These limits are designed to provide reasonable protection against harmful interference in a residential installation. This equipment generates, uses and can radiate radio frequency energy and, if not installed and used in accordance with the instructions, may cause harmful interference to radio communications. However, there is no guarantee that interference will not occur in a particular installation. If this equipment does cause harmful interference to radio or television reception, which can be determined by turning the equipment off and on, the user is encouraged to try to correct the interference by one or more of the following measures:

- Reorient or relocate the receiving antenna.
- Increase the separation between the equipment and receiver.

--Connect the equipment into an outlet on a circuit different from that to which the receiver is connected.

--Consult the dealer or an experienced radio/TV technician for help.

This device complies with Part 15 of the FCC Rules. Operation is subject to the following two conditions: (1) this device may not cause harmful interference, and (2) this device must accept any interference received, including interference that may cause undesired operation.

Caution: Any changes or modifications to this device not expressly approved by Huawei Technologies Co., Ltd. for compliance could void the user's authority to operate the equipment.

Please visit <http://consumer.huawei.com/en/support/hotline> for recently updated hotline and email address in your country or region.

31010SRY_01